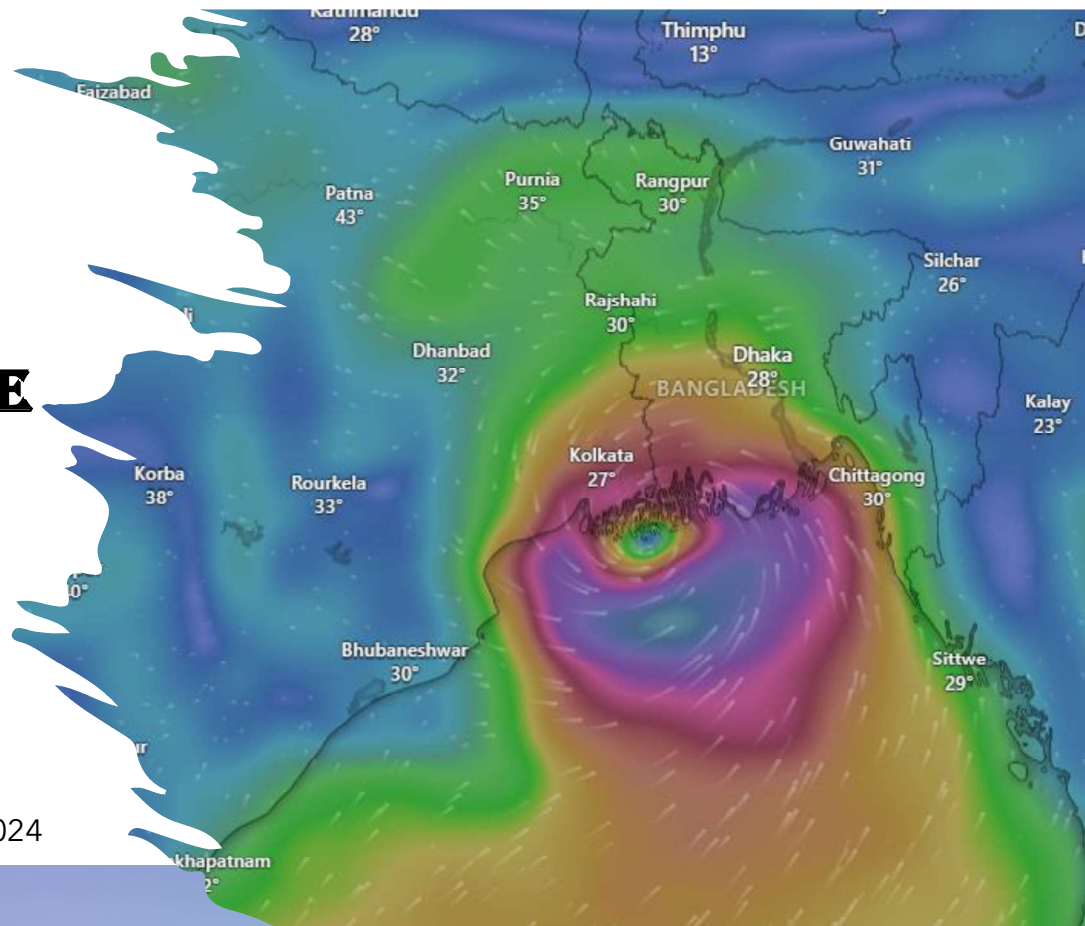




MONITORING & SITUATION UPDATE

CYCLONE "REMAL"

Venue: Online
Time & Date: 10:00pm, 26 May 2024



FORECASTED SITUATION(BMD)

SPECIAL WEATHER BULLETIN, SL NO: 10 (TEN), DATE: 26.05.2024

THE CYCLONIC STORM "REMAL" OVER NORTHWEST BAY AND ADJOINING AREA MOVED NORTHWARDS, INTENSIFIED INTO SEVERE CYCLONIC STORM OVER THE SAME AREA (NEAR LAT: 19.5°N, LON: 89.4°E) AND WAS CENTRED AT 06 AM TODAY (26 MAY 2024) IS ABOUT 400 KMS SOUTHWEST OF CHATTOGRAM PORT, 360 KMS SOUTHWEST OF COX'S BAZAR PORT, 330 KMS SOUTH OF MONGLA PORT AND 295 KMS SOUTH OF PAYRA PORT. IT IS LIKELY TO MOVE IN A NORTHERLY DIRECTION AND MAY CROSS SAGAR ISLAND (WEST BENGAL) - KHEPUPARA COAST NEAR MONGLA BY EVENING / MID NIGHT OF 26 MAY 2024. UNDER THE PERIPHERAL EFFECT OF THE SEVERE CYCLONE RAIN WITH GUSTY WIND HAS STARTED OVER COASTAL REGIONS OF BANGLADESH.

MAXIMUM SUSTAINED WIND SPEED WITHIN 64 KM OF THE SEVERE CYCLONE CENTRE IS ABOUT 90 KPH RISING TO 120 KPH IN GUSTS/SQUALLS. SEA WILL REMAIN HIGH NEAR THE SEVERE CYCLONE CENTRE.

MARITIME PORTS OF PAYRA AND MONGLA HAVE BEEN ADVISED TO LOWER DANGER SIGNAL NUMBER SEVEN INSTEAD OF HOIST GREAT DANGER SIGNAL NO. TEN (R) TEN.

THE COASTAL DISTRICTS OF KHULNA, SATKHIRA, BAGHERHAT, PIROJPUR, JHALOKHATI, BORGUNA, BARISHAL, BHOLA, PATUAKHALI AND THEIR OFFSHORE ISLANDS & CHARS WILL COME UNDER GREAT DANGER SIGNAL NO. TEN (R) TEN.

MARITIME PORT OF COX'S BAZAR AND CHATTOGRAM HAVE BEEN ADVISED TO LOWER DANGER SIGNAL NUMBER SIX INSTEAD OF HOIST GREAT DANGER SIGNAL NO. NINE (R) NINE.

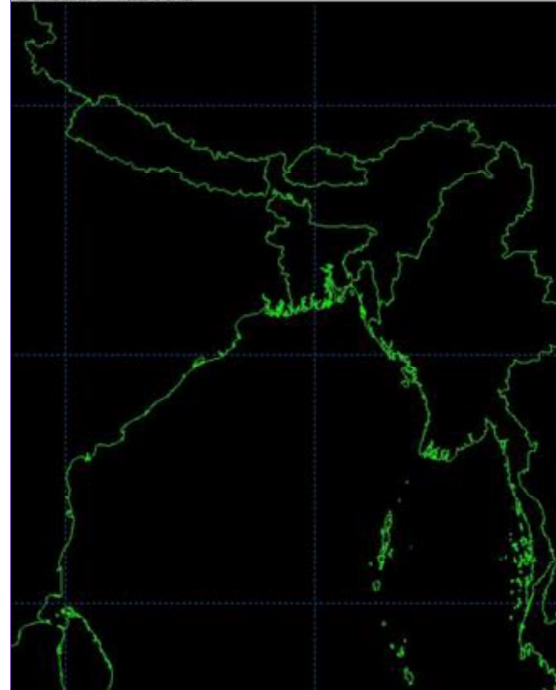
THE COASTAL DISTRICT OF CHATTOGRAM, COX'S BAZAR, FENI, CUMILLA, NOAKHALI, LAXMIPUR, CHANDPUR AND THEIR OFFSHORE ISLANDS AND CHARS WILL COME UNDER GREAT DANGER SIGNAL NO. NINE (R) NINE.

UNDER THE PERIPHERAL EFFECT OF THE SEVERE CYCLONE AND STEEP PRESSURE GRADIENT, THE LOW-LYING AREAS OF THE COASTAL DISTRICTS OF KHULNA, SATKHIRA, BAGHERHAT, PIROJPUR, JHALOKHATI, BORGUNA, BARISHAL, BHOLA, PATUAKHALI, NOAKHALI, LAXMIPUR, FENI, CHANDPUR, CUMILLA, CHATTOGRAM, COX'S BAZAR AND THEIR OFFSHORE ISLANDS AND CHARS ARE LIKELY TO BE INUNDATED BY WIND DRIVEN SURGE OF 08-12 FEET HEIGHT ABOVE NORMAL ASTRONOMICAL TIDE.

UNDER THE INFLUENCE OF THE CYCLONE RAJSHAHI, RANGPUR, MYMENSINGH, DHAKA, KHULNA, BARISHAL, CHATTOGRAM AND SYLHET DIVISIONS ARE LIKELY TO BE EXPERIENCED OF HEAVY (44-88 MM) TO VERY HEAVY RAINFALL (≥89 MM) WITH GUSTY/SQUALLY WIND. DUE TO VERY HEAVY RAINFALL LANDSLIDE MAY OCCUR AT PLACES OVER THE HILLY REGIONS OF COX'S BAZAR, BANDARBAN, RANGAMATI, KHAGRACHARI AND CHATTOGRAM.

ALL FISHING BOATS AND TRAWLERS OVER NORTH BAY AND DEEP SEA HAVE BEEN ADVISED TO REMAIN IN SHELTER TILL FURTHER NOTICE.

05/25/24 2230 Z



FORECASTED SITUATION (IMD)

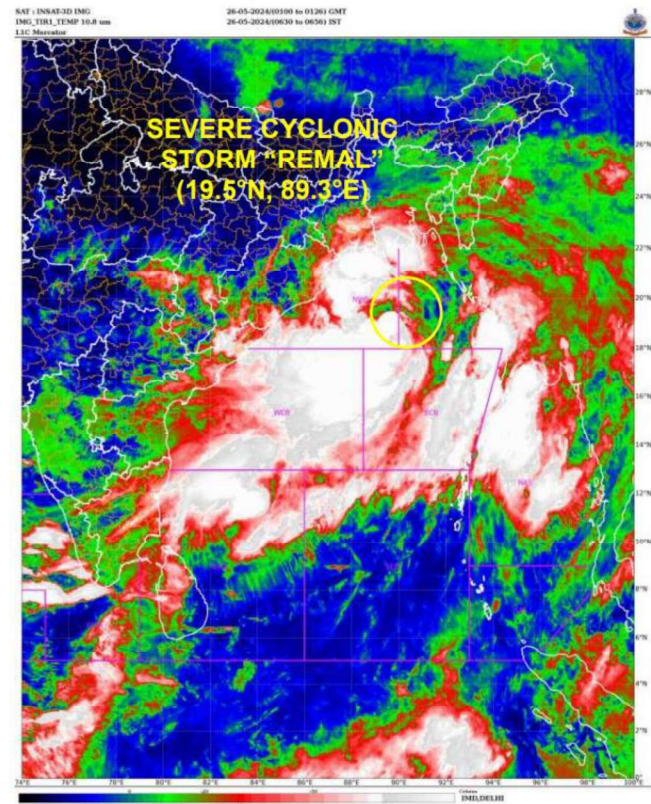
SUB: SEVERE CYCLONIC STORM "REMAL" PRONOUNCED AS "RE-MAL" OVER NORTH BAY OF BENGAL

THE CYCLONIC STORM "REMAL" (PRONOUNCED AS "RE-MAL") OVER NORTH BAY OF BENGAL MOVED NEARLY NORTHWARDS WITH A SPEED OF 06 KMPH DURING PAST 06 HOURS, **INTENSIFIED INTO SEVERE CYCLONIC STORM** AND LAY CENTERED AT 0000 UTC OF TODAY, THE 26 TH MAY, 2024 OVER NORTH BAY OF BENGAL NEAR LATITUDE 19.5°N AND LONGITUDE 89.3°E ABOUT 290 KM SOUTH-SOUTHWEST OF KHEPUPARA (41984, BANGLADESH), 330 KM SOUTH OF MONGLA (41958, BANGLADESH), 270 KM SOUTH-SOUTHEAST OF SAGAR ISLANDS (42731, WEST BENGAL), 390 KM SOUTH-SOUTHEAST OF DIGHA (42901, WEST BENGAL) AND 310 KM SOUTH-SOUTHEAST OF CANNING (42812, WEST BENGAL).

IT IS VERY LIKELY TO CONTINUE TO MOVE NEARLY NORTHWARDS AND INTENSIFY FURTHER AND CROSS BANGLADESH AND ADJOINING WEST BENGAL COASTS BETWEEN SAGAR ISLAND (42731) AND KHEPUPARA (41984), CLOSE TO SOUTHWEST OF MONGLA (41958, BANGLADESH) BY 1800 UTC OF TODAY, THE 26TH MAY AS A SEVERE CYCLONIC STORM WITH WIND SPEED OF 110-120 GUSTING TO 135 KMPH.

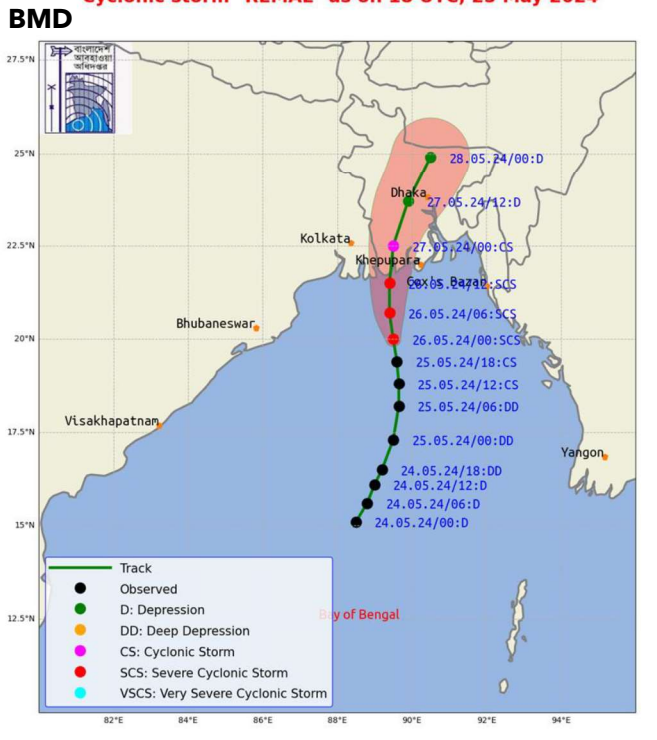
FORECAST TRACK AND INTENSITY ARE GIVEN IN THE FOLLOWING TABLE:

DATE/TIME (UTC)	POSITION (LAT. °N/ LONG. °E)	MAXIMUM SUSTAINED SURFACE WIND SPEED (KMPH)	CATEGORY OF CYCLONIC DISTURBANCE
26.05.24/0000	19.5/89.3	85-95 GUSTING TO 105	SEVERE CYCLONIC STORM
26.05.24/0600	20.2/89.2	100-110 GUSTING TO 120	SEVERE CYCLONIC STORM
26.05.24/1200	20.9/89.2	110-120 GUSTING TO 135	SEVERE CYCLONIC STORM
26.05.24/1800	21.8/89.3	110-120 GUSTING TO 135	SEVERE CYCLONIC STORM
27.05.24/0000	22.7/89.5	70-80 GUSTING TO 90	CYCLONIC STORM
27.05.24/1200	24.2/90.1	50-60 GUSTING TO 70	DEEP DEPRESSION
28.05.24/0000	25.5/90.9	30-40 GUSTING TO 50	DEPRESSION

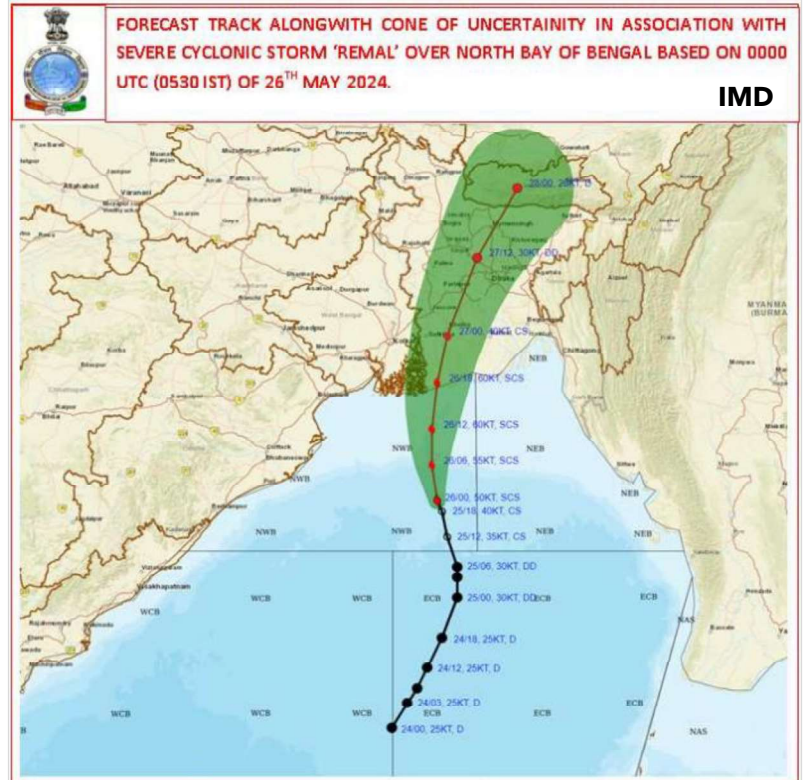


FORECASTED TRACK

Observed & forecast track along with Cone of Uncertainty of Cyclonic storm "REMAL" as on 18 UTC, 25 May 2024



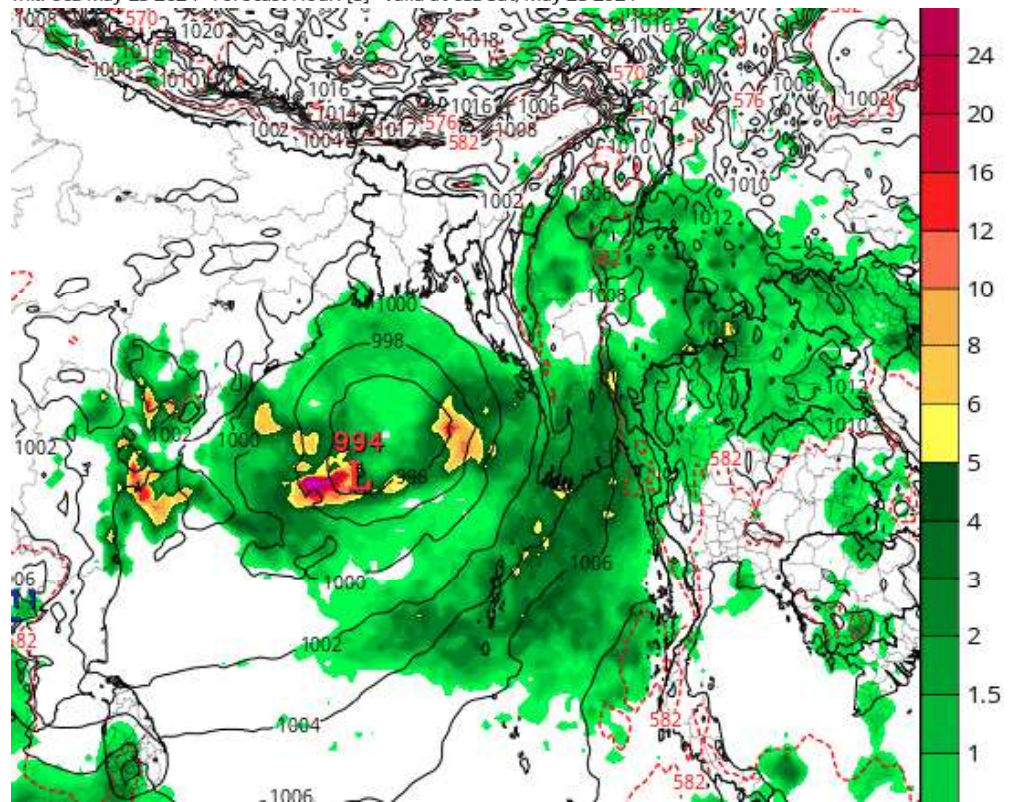
FORECAST TRACK ALONGWITH CONE OF UNCERTAINTY IN ASSOCIATION WITH SEVERE CYCLONIC STORM 'REMAL' OVER NORTH BAY OF BENGAL BASED ON 0000 UTC (0530 IST) OF 26TH MAY 2024.



FORECASTED SITUATION (ECMWF)

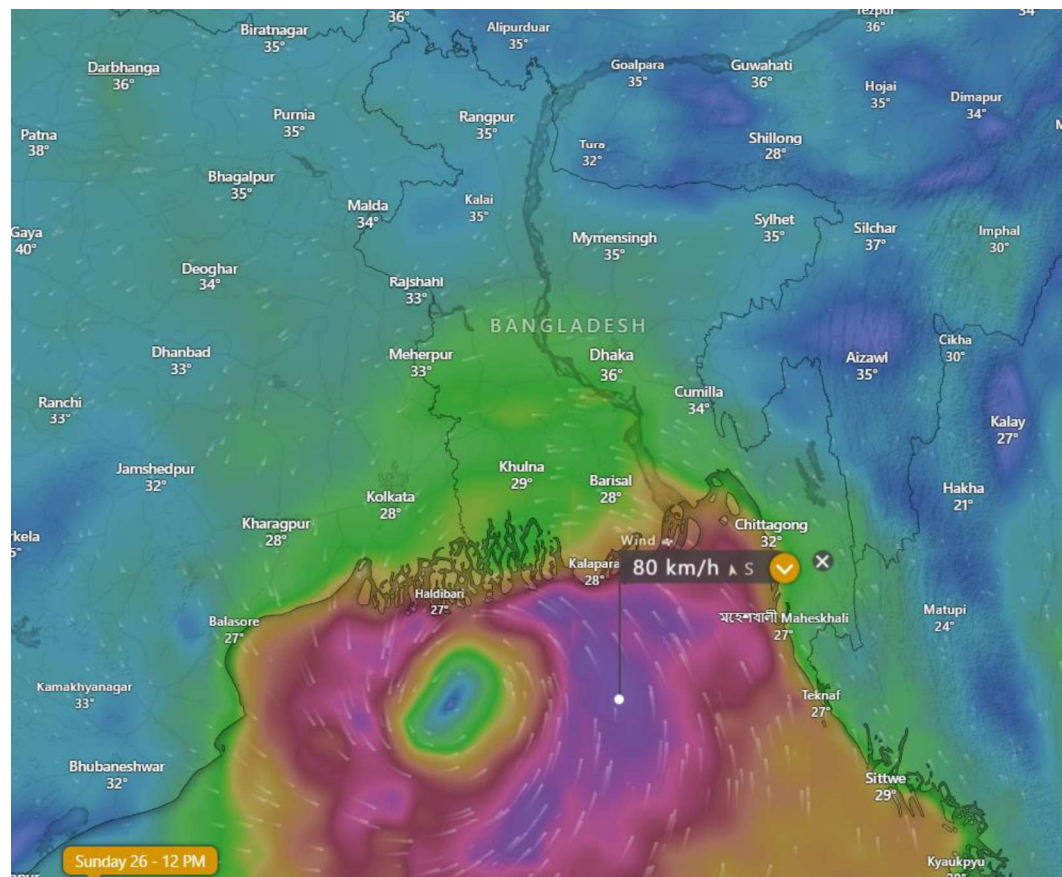
TRACK

ECMWF 3-hour Averaged Precip Rate (mm/hr), MSLP (hPa) & 1000-500mb Thickness (dam)
Init: 00z May 25 2024 Forecast Hour: [3] valid at 03z Sat, May 25 2024



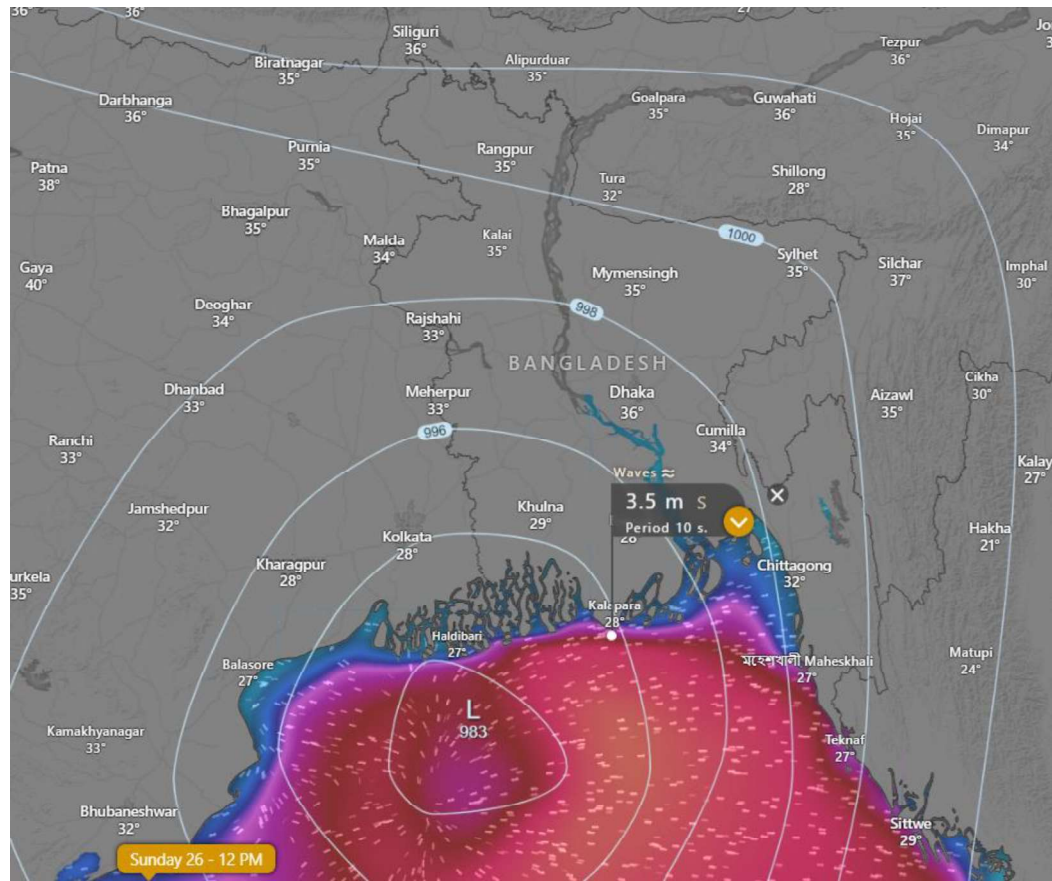
FORECASTED SITUATION (ECMWF)

WIND VELOCITY



FORECASTED SITUATION (ECMWF)

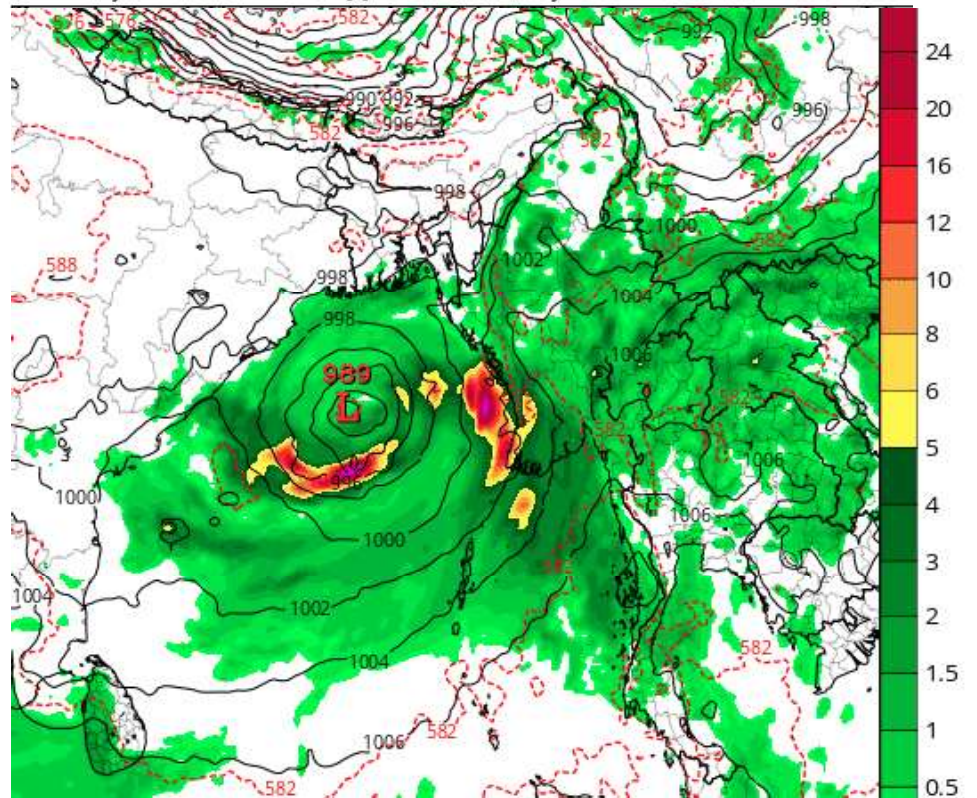
STORM SURGE



FORECASTED
SITUATION
(GFS)

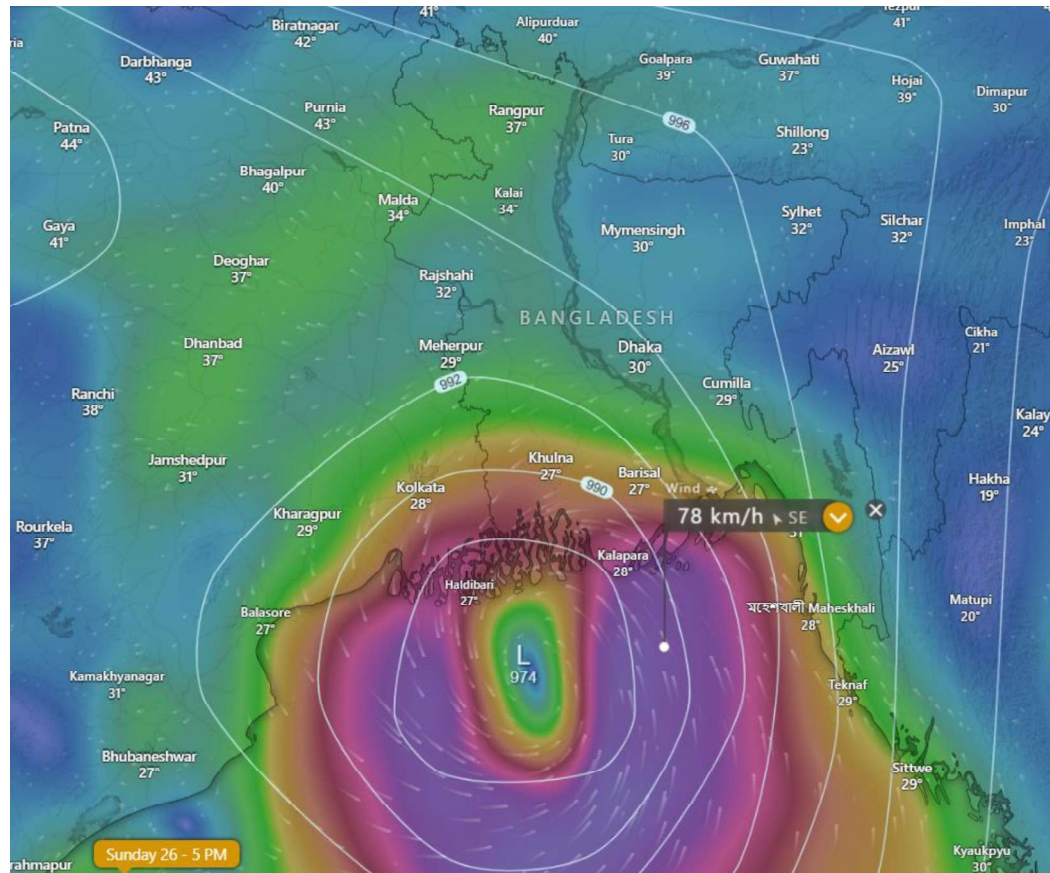
TRACK

GFS 6-hour Averaged Precip Rate (mm/hr), MSLP (hPa) & 1000-500mb Thickness (dam)
Init: 00z May 25 2024 Forecast Hour: [6] valid at 06z Sat, May 25 2024



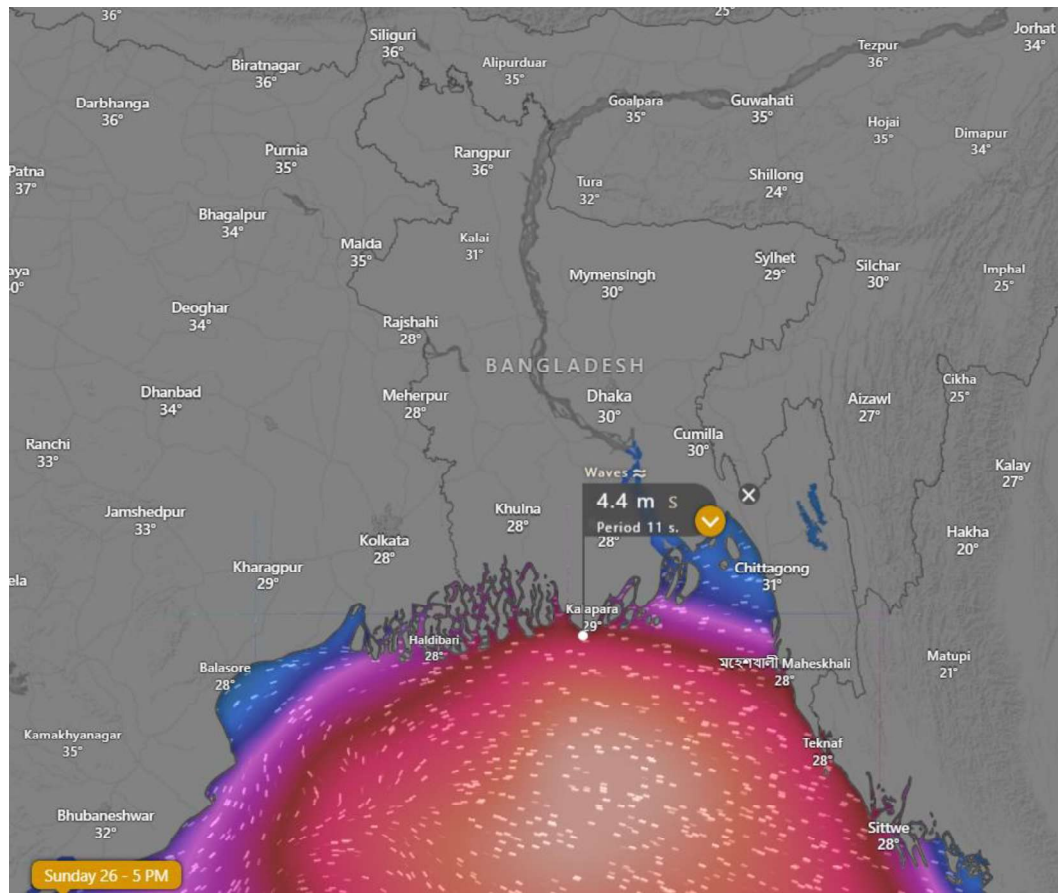
FORECASTED SITUATION (GFS)

WIND VELOCITY



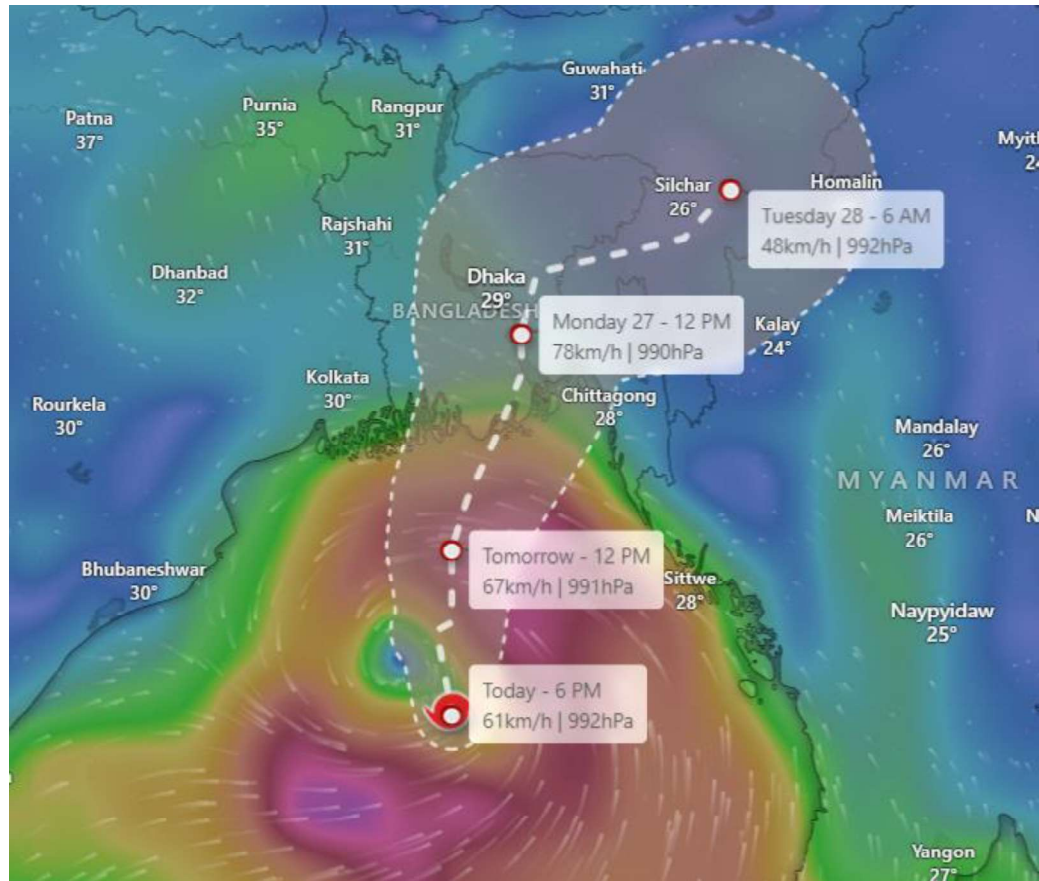
FORECASTED SITUATION (GFS)

STORM SURGE



FORECASTED SITUATION (UKMET)

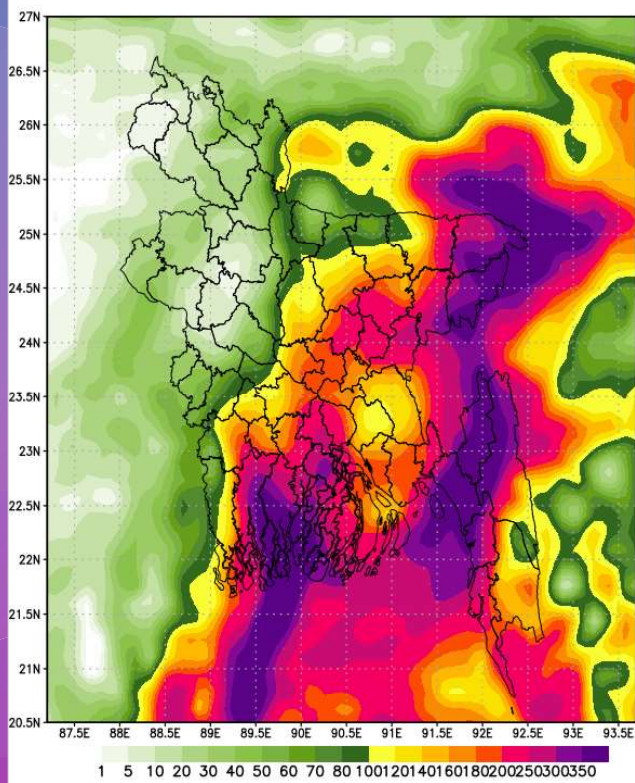
TRACK



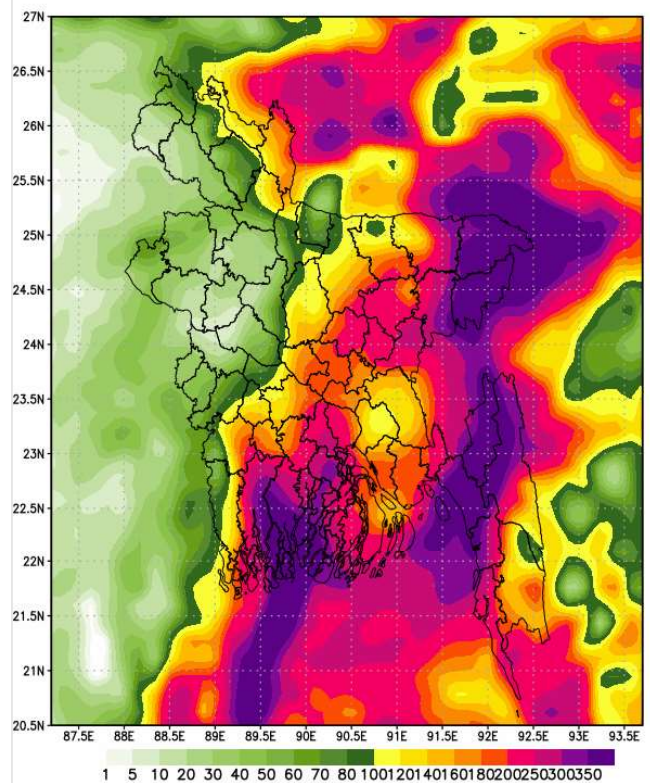
RESEARCH &
FORECASTING
MODEL
(WRF)

RAINFALL

4 Day Accumulated Rainfall(mm): 00Z,25.05.24 to 00Z,29.05.24



7 Day Accumulated Rainfall(mm): 00Z,25.05.24 to 00Z,01.06.24



Forecast summery on Cyclone Remal Landfall

Source	Potentiality of Cyclone	Time of Landfall	Landfall Location	Max. Wind Speed (Approx.)	Max. Surge Height (Approx.)	Max. Rainfall (3 days)
BMD	Severe Cyclonic Storm	12:00 pm of 26 May to 6:00 am of 27 May BST	Sagar Island (West Bengal, India) to Khepupara (Patuakhali, Bangladesh)	89-117 km/h	N/A	N/A
IMD	Severe Cyclonic Storm	12:00 pm of 26 May to 6:00 am of 27 May BST	Sagar Island (West Bengal, India) to Khepupara (Patuakhali, Bangladesh)	110-120 km/h	3.0-4.0m	N/A
ECMWF	Cyclonic Storm	12:00 pm of 26 May to 6:00 am of 27 May BST	Bhubaneshwar (West Bengal, India) to Khepupara (Patuakhali, Bangladesh)	80-95 km/h	3.5m	150mm very heavy rainfall
GFS	Cyclonic Storm	12:00 pm of 26 May to 6:00 am of 27 May BST	Sagar Island (West Bengal, India) to Khepupara (Patuakhali, Bangladesh)	80-95 km/h	4.4m	190mm very heavy rainfall
JTWC	Cyclonic Storm	12:00 pm of 26 May to 6:00 am of 27 May BST	Sagar Island (West Bengal, India) to Khepupara (Patuakhali, Bangladesh)	95-110 km/h	N/A	N/A

Most Impacted Districts: Patuakhali, Barguna, Bagerhat, Satkhira, Khulna, Pirojpur, Jhalakathi, Bhola

Date: 25.05.2024

Impact Category

High Impact- 160 Unions

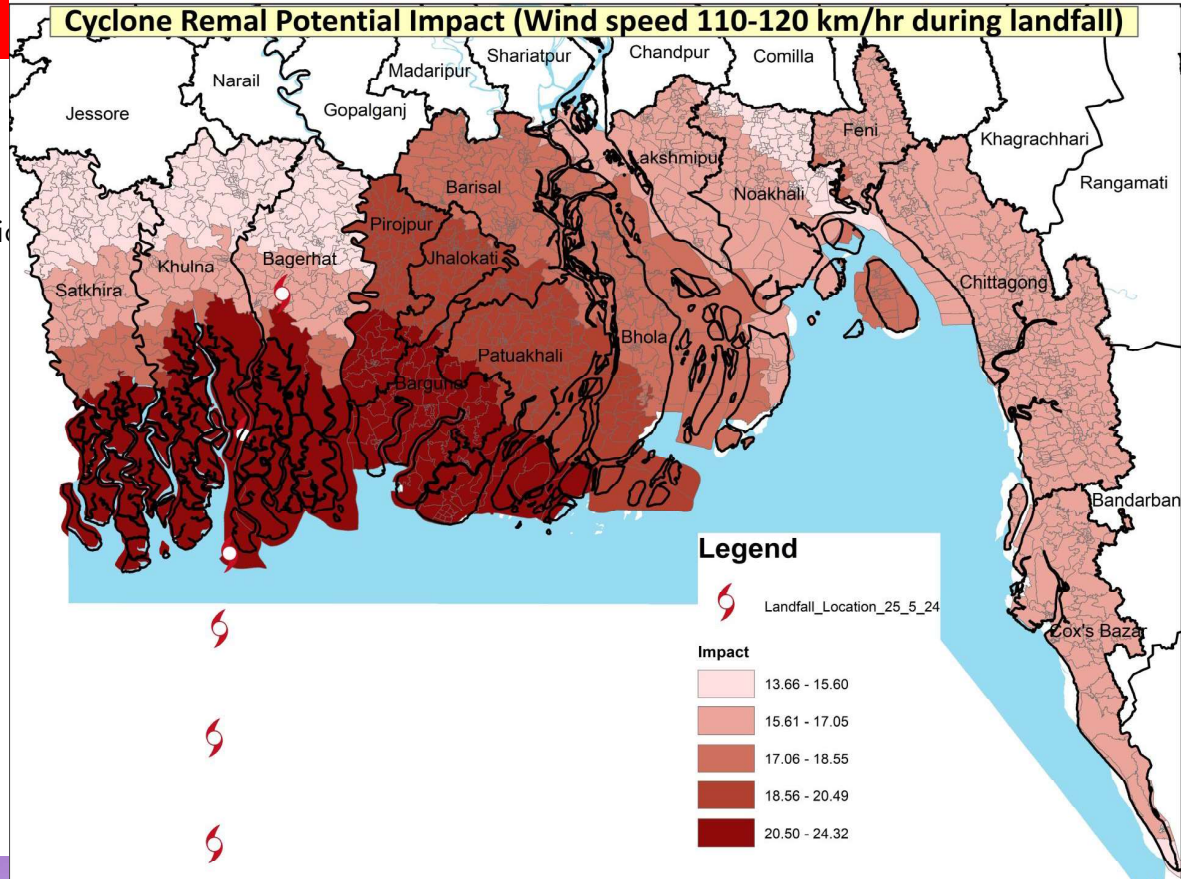
Moderate Impact- 1425 unions

Low Impact- 157 Unions

High Impacted Districts

1. Satkhira
2. Khulna
3. Bagerhat
4. Barguna
5. Patuakhali
6. Jhalakathi
7. Pirojpur
8. Bhola

Cyclone Remal Potential Impact (Wind speed 110-120 km/hr during landfall)



Cyclone Remal Impact Update

BDRCS Cyclone EAP Activation Triggers

Stage I: Pre-activation:

When BMD issues a **Signal 4 or above** warning with a **lead time of 72 hours** or more "AND" BMD/IMD/ECMWF/GFS/JTWC (at least two models) forecasts **wind speeds of 125 km/h or greater** in the coastal districts of Bangladesh with a lead time of 72 hours or more AND with a **potential damage of 25% household** asset of the respective Unions".

Stage II: Activation:

"When BMD issues a **Signal 7 or above** warning with a **lead time of 30 hours or more** "AND" BMD/IMD forecasts **wind speeds of 125 km/h or greater** in the coastal districts of Bangladesh with a lead time of 30 hours or more AND with a **potential damage of 25% household** asset of the respective Unions".



THANK YOU

N.B: The forecasts presented here has a higher level of uncertainty. Remember that we are forecast users, not forecasters. The system is under constant watch and being monitored regularly, and situation updates will be shared regularly.

