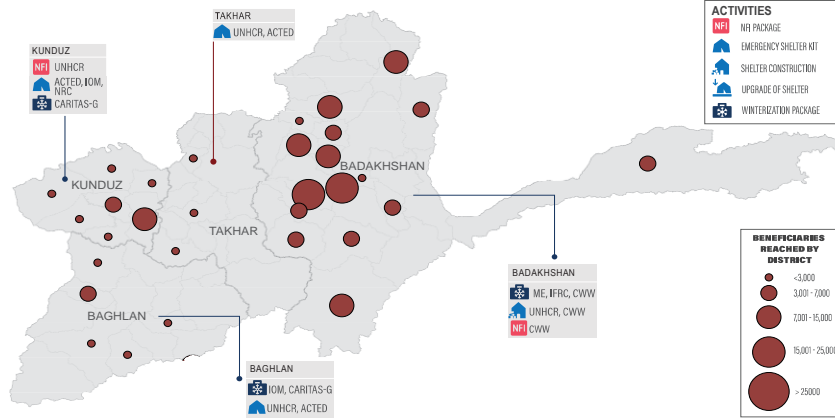
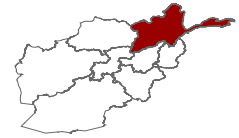
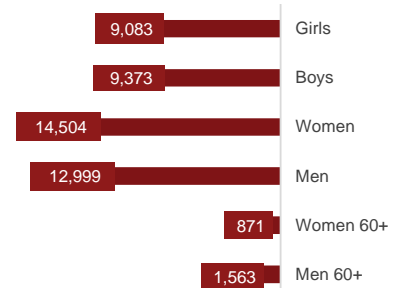


cumulative people reached from January-September 2023 through Shelter and NFI against 136,502 targeted



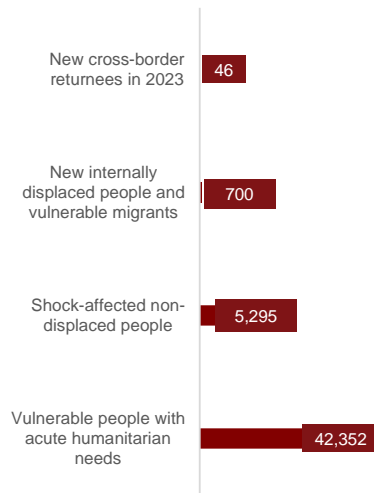
AGE & GENDER BREAKDOWN

51% of the population reached are women and girls, 38% are children

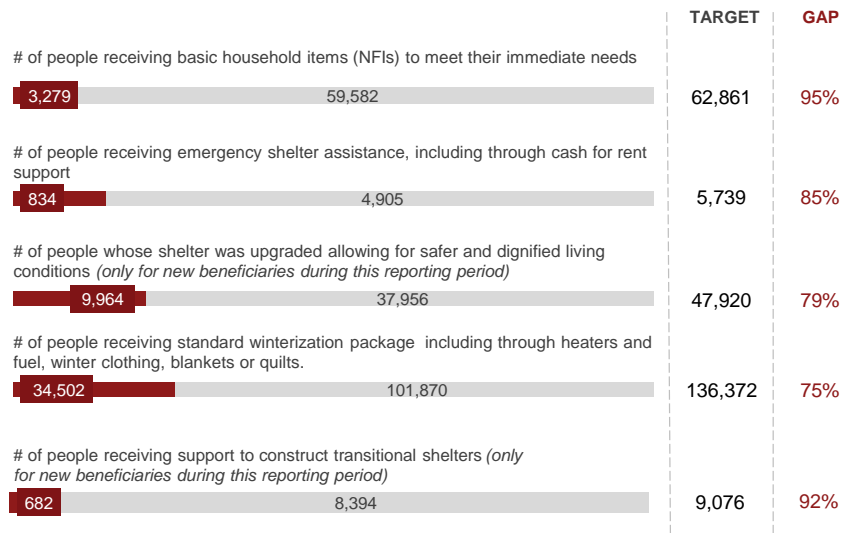


Women-headed Households: **921**

BENEFICIARY TYPE



ES-NFI KEY INDICATORS



REPORTING MEMBERS

ACTED, CARITAS-G, CWW, IFRC, IOM, ME, NRC.

PEOPLE REACHED PER MONTH

