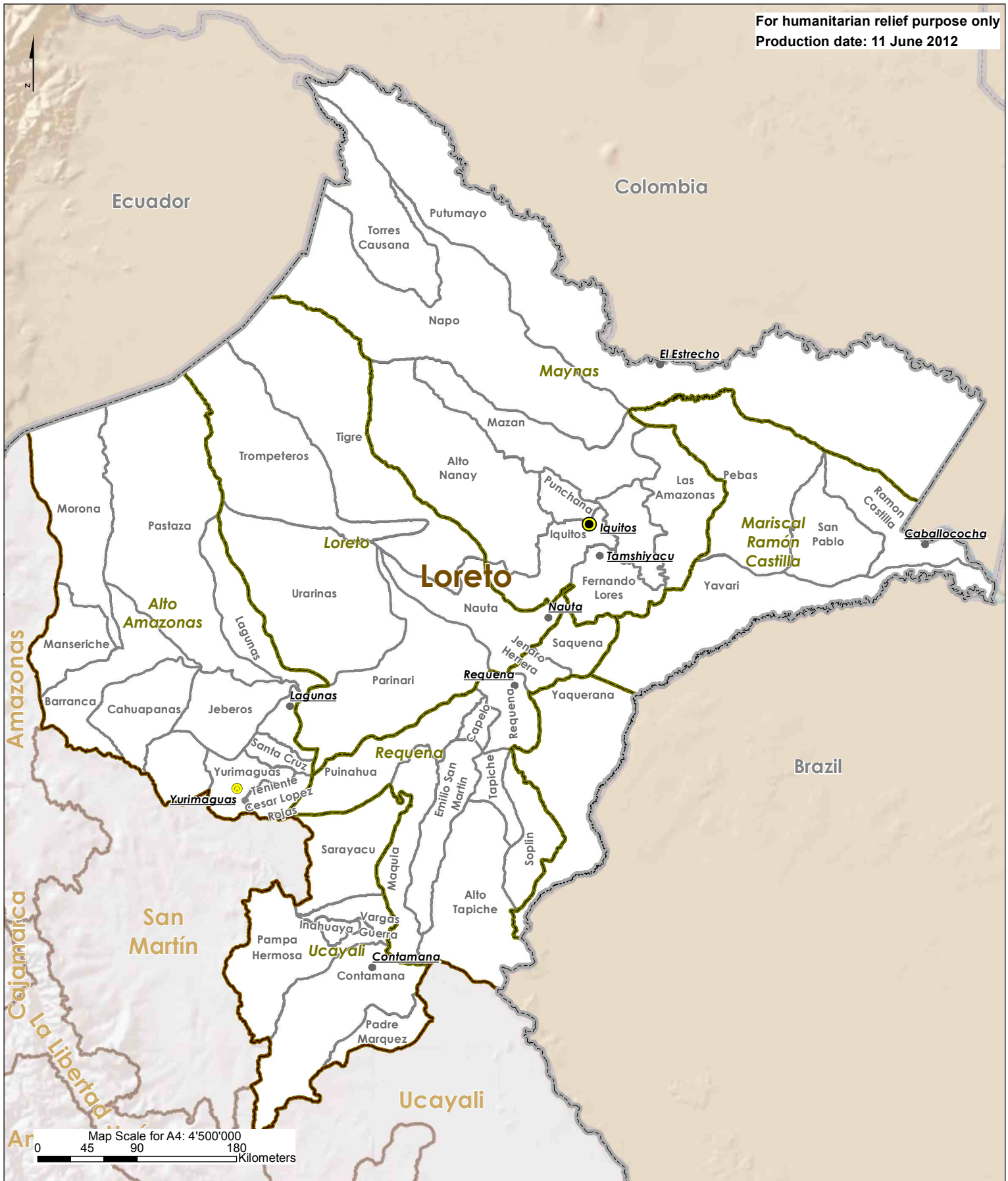




For humanitarian relief purpose only  
Production date: 11 June 2012



- |                          |                         |
|--------------------------|-------------------------|
| <b>Boundaries</b>        | <b>Populated places</b> |
| International boundaries | Region capital          |
| Department               | Main town               |
| Province                 | Town                    |
| District                 |                         |

Data sources:  
Administrative boundaries: DIVA-GIS  
Roads: Cloudmade / OSM  
Hydrography: DIVA-GIS  
Coordinate System: WGS 84  
File: PER\_Loreto\_REF1\_A4\_11JUN2012

A product of



Disclaimer: Data, designations and boundaries contained on this map are not warranted to error-free and do not imply acceptance by the REACH partners, associates and donors mentioned on this map.