



FIRST RESULTS:

Individual Assessment of Internally Displaced Persons in Bamako area, Mali

November 1st, 2012

Mali is currently in a state of political transition following a military coup in March 2012, with half of the northern regions of the country occupied by insurgents. The volatile situation in the North of Mali has spurred a steady movement of internal population displacement from the Northern regions to all regions of the country, as well as intra-regional displacement in the northern regions. Movement continues to be observed between displacement locations as well as amid household members, as the overall situation of population movement in Mali remaining fluid.

In accordance with the methodology endorsed by the Commission on Population Movement (CMP in French), part of the Protection cluster, IOM has completed individual assessments of the internally displaced persons in the Bamako area between the end of September and October, 2012. Preliminary results were published in the October 2012 report issued by the CMP.

SUMMARY

At the time of the assessment, a total of 6,469 households with 47,292 individuals reported as IDPs in the six communes of Bamako as well as the peripheral commune of Kalabancoro (Kalabancoro, Niamana and Siracoro Meguetana quartiers).¹ The Commune with the most IDPs by percentage is Commune 6, making up 24% of all the assessed IDPs, followed by Commune 5 and Commune 1, with 17% and 15% respectively. The average household size of the assessed IDP population is 7.3, of which 5 members were reported as the immediate family while 2 others as other relations or non-relations².

Of the assessed displaced population, 51% are female and 49% are male. Children under 18 years of age make up 50% of the population, while the working aged population accounts for 45% and those 60 years old and up make up the remaining 5% of the population³.

The majority of the IDP population in the Bamako area indicated that they originate from the region of Tombouctou (58%), while a further 38% originate from Gao region. Moreover, only 2% originate from Kidal and another 2% from the Mopti region. While there has been some displacement reported since the beginning of 2012, the greater part of the households stated that they arrived in the Bamako area between March and June 2012, with smaller numbers of households arriving after that. Nearly all assessed households have indicated that they came directly from the northern regions to the Bamako area, with only 4% stating a transit within Mali and 1% reporting a transit through another country.

The primary reason for displacement has been reported as linked to conflict/violence. Furthermore, approximately 94% of the population indicated that they intend to return to their place of origin, with 70% of these noting that an improved security was the primary condition for return. Another 17% stated that they required an improved economic situation, while a further 4% indicated a need for food security in order to return to their location of origin. Only 3.5% of the population indicated that they had no intention to return to their place of origin, while another 2.7% did not answer or did not know. Moreover, 21% of the assessed population stated that they have gone back and forth to the place of origin since their

¹ Assessment stations were established at quartier level in all 6 Communes of Bamako. IDPs from the neighboring sub-urban area presented themselves at the Bamako quartier level assessment points.

² The results of the 2009 Mali Census indicate an average household's size for the country at 6.2. Specifically for the three northern regions of Tombouctou, Gao and Kidal, the census results show an average household size between 5 and 5.5 members per household.

³ The results of the 2009 Mali Census shows 53% children, 40% working aged population, 5% aged 60 years and over, and 2% no data.



displacement or continuously move between the two locations, whereas 70% reported that they have remained in the Bamako area since their displacement. Another 9% did not answer.

The majority, 62%, of the assessed IDP households in the Bamako area stated that they are renting houses.⁴ A further 29% reported that they are staying with host families, with the remaining 9% indicated that they are residing in other locations, including collective housing situations.

The needs expressed by the IDP population were primarily money and food, followed by shelter. Of the responding households, 86% reported that they have not received any assistance since their displacement to the Bamako area. Respondents from Commune 3 and the peripheral commune of Kalabancoro had the highest percentage of reported assistance, at 20% and 19% of all assessed household. The Communes 1 and 2 had the lowest, at only 9% each. The most common type of assistance received was stated to be food assistance, followed by money.

METHODOLOGY

IOM has utilized the agreed methodology and form endorsed by the Commission on Population Movement (CMP in French) to carry out the individual assessments in the Bamako area. The exercise took place between the end of September and October 2012 and was organized at a quartier level in all 6 Communes of Bamako. Throughout the assessments, IDP households from the bordering commune of Kalabancoro (Kalabancoro, Niamana and Siracoro Meguetana quartiers) also presented themselves for assessment.⁵

Training of the data collection team took place between the 10th and 17th of September with small groups of approximately 30 persons per group. The training was provided to all IOM Supervisors, Enumerators, as well as members from the Ministry of Humanitarian Affairs, Solidarity and the Elderly (MAHSPA in French) and the Directorate General of Civil Protection (DGPC in French) that made up the field data collection team. The training included: purpose, methodology and tools, confidentiality and data protection, field operations, and practical sessions. In addition, 18 displaced persons were trained on the objective and process of the exercise, as well as the messages and mechanisms to use when sharing information with the displaced population.

The exercise began with a communication campaign aimed at informing the IDP population regarding the dates, purpose and process of the exercise. The communication campaign took place between the 21st and 24th of September, 2012. The IOM team worked alongside the mayors and the neighbourhood chiefs (*chefs de quartier*), who further engaged town criers, to pass the message regarding the exercise to the displaced population. The 18 trained displaced persons supported the team of authorities to pass the information to the displaced population.

The field data collection began on the 25th of September and was completed on the 5th of October. The IOM field team was made up of 144 Enumerators operating at quartier level, 14 Supervisors organized by Commune level, and an additional 4 IOM staff who monitored the data collection throughout. In addition, 6 members of the MAHSPA and another 6 from the DGPC made up part of the Commune level field data collection team. The field data collection involved a community based approach involving members of the MHASPA, DGPC, mayors, neighbourhood chiefs and members of the displaced population.

The data entry was completed between the 9th and 25th of October, 2012 by 20 trained Data Entry Clerks and the data cleaning and analysis took place between the 26th of October and 6th of November, 2012. Specific efforts were made to check for potential double registrations using a number of indicators available for review. After data entry the list of names of HoHs was checked for duplicates based on the phone number, name and ID document. A total of 27 Households (0.4%) of the total assessed households were identified as

⁴ Version 2 of the form endorsed for us by the CMP included for the first time the option of housing rental.

⁵ During November 2012, IOM will expand the exercise to the sub-urban areas of Bamako and the rest of Kati circle in Koulikoro.

duplicates and removed from the database that will be utilized as potential beneficiary lists and detailed aggregated statistics. In order to improve in this regard, the next round of data collection will seek to collect more precise ID document details from the IDP respondents as well as other indicators.

Additionally, a post assessment survey was conducted via telephone with random sample households on the 25th of October 2012. A total of 382 households were contacted and asked to confirm their household members and the location of displacement. Of those contacted, 68% indicated that the household composition remained the same, while a further 11% indicated that there were less members and another 21% reported that new members joined the household since the initial assessment. Furthermore, a total of 72% of the households reported to be in the same location as previously assessed, while the remaining 28% indicated that they have moved to other locations, almost exclusively within the Bamako area. No household reported having permanently returned to the northern regions, albeit some have noted that few household members have done some back and forth movement though have not permanently returned. The results of the post assessment survey furthermore reinforce the statement of the Commission on Population Movement, and collaborated by reports from partners and the displaced, that the displaced population in Mali remains fluid.

RESULTS

Demographics

A total of 6,469 IDP households with 47,292 individuals were assessed, representing an average household size of 7.3 persons. An analysis of the household composition shows that on average the IDP household in Bamako area consists of 5 members of the immediate family, as well as an additional 2 members reported to be either another relation or not related. The results of the 2009 Mali Census presents a national average of 6.2 persons per household and an average of between 4 and 6 persons per household for the northern regions of Tombouctou, Gao, Kidal and Mopti.⁶ As such, the results of the assessment of IDP households in the Bamako area can be considered to be relatively in line with the 2009 Mali Census data bearing in mind the displacement situation. A more in depth analysis of the household composition is ongoing; additional information will be released in the next report.

Table 1: Distribution of IDP households by Commune in Bamako area

By Commune* / district - circle	% by commune	HHs	IND	Average
Total	100%	6 469	47 292	7,3
Bamako District (Commune 1 - 6)		5 699	41 477	7,3
Commune 1	15%	979	8 080	8,3
Commune 2	12%	770	4 088	5,3
Commune 3	13%	837	5 328	6,4
Commune 4	7%	467	3 099	6,6
Commune 5	17%	1 097	8 093	7,4
Commune 6	24%	1 549	12 789	8,3
Kalibancoro commune**	12%	770	5 815	7,6

* Communes completed by October 10, 2012

**Administratively belongs to Kati circle

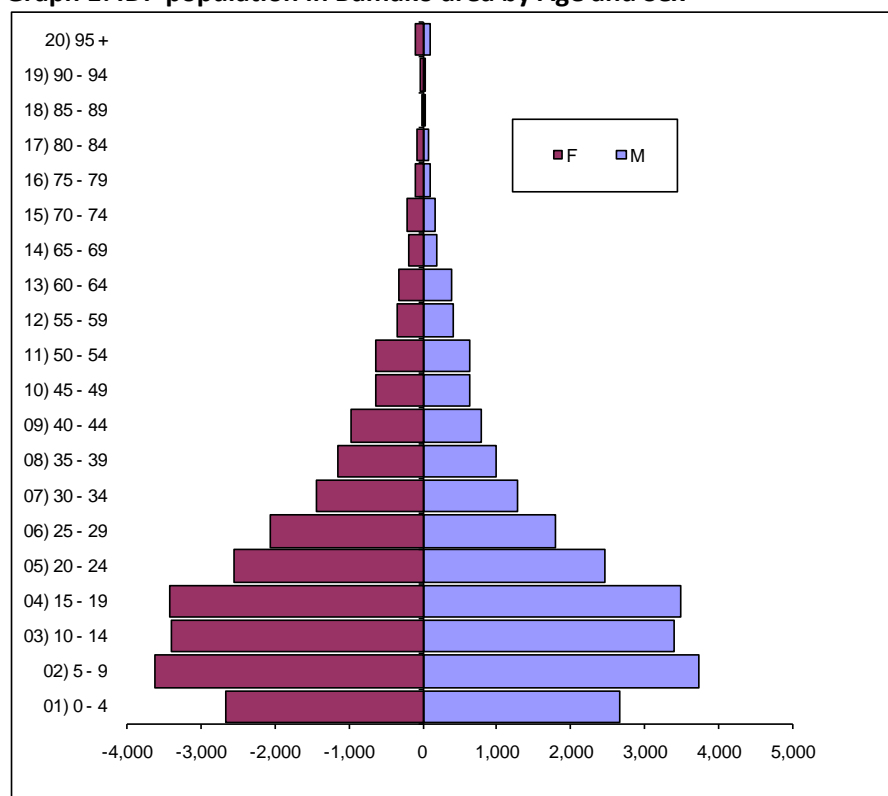
The IDP population in the Bamako area is 51% female and 49% male. The gender distribution is evenly distributed throughout all age levels. Moreover, the population consists of 50% children and 50% adults. A total of 3% of the children are 0-2 years of age, 11% are 3-5 years of age, whereas the remaining 36% are children aged 6-17 years old. Of the adults, 45% make up the working aged population of 18-59 years old, whilst the remaining 5% accounts for those 60 years of age and older.

⁶ 2009 Mali Census data for average household size by northern region: Tombouctou: 5.5; Gao: 6; Kidal: 4; Mopti: 5.3.

Table 2: IDP population in Bamako area by Age and Sex

Age group	Total	Female	Male	Age group	Total	Female	Male
Total	47,292	23,943	23,349	Total	100%	51%	49%
0 - 2	1,377	670	707	0 - 2	3%	1%	1%
3 - 5	5,378	2,683	2,695	3 - 5	11%	6%	6%
6 - 17	16,948	8,368	8,580	6 - 17	36%	18%	18%
18 +	21,458	11,158	10,300	18 +	45%	24%	22%
60 +	2,131	1,064	1,067	60 +	5%	2%	2%

Graph 1: IDP population in Bamako area by Age and Sex



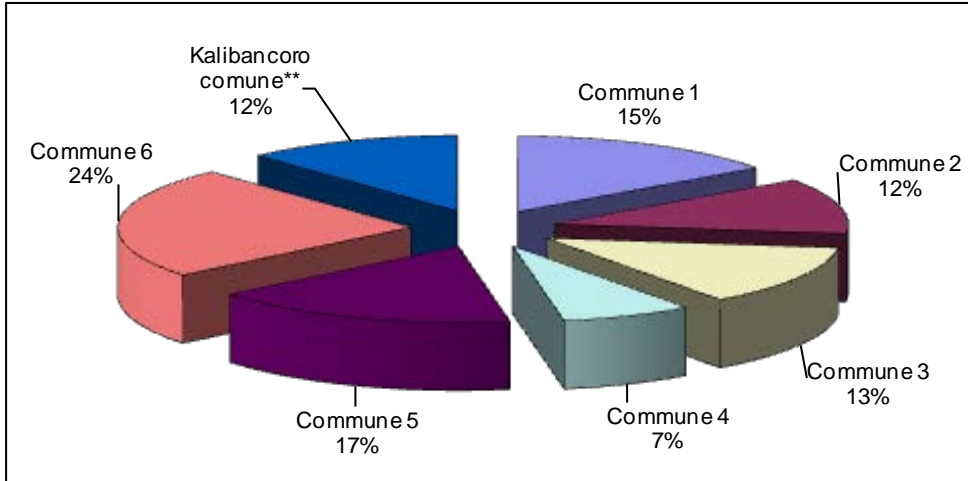
Location of Displacement

The assessment results indicate that IDPs have reported residing in all of the quarters of Bamako, in addition to several sub-urban areas.⁷ Of the 73 locations assessed, including 70 quarters and information from 3 sub-urban areas, 14 quarters were hosting 25 or less IDP households whereas another 14 quarters were hosting 150 or more households. The remaining 45 quarters reported to be hosting households ranging in between.

Commune 6 hosts the highest number of IDPs, making up 24% of all assessed households in the Bamako area. More specifically, nearly half of all IDPs in Commune 6 reported to be residing in the quartier of Banankabougou. Otherwise, the quartiers of Baco Djikoroni and Kalabancoura host the highest numbers of IDP households in the Commune 5, which furthermore makes up 17% of the total assessed households. Commune 1 makes up 15% of the total assessed population, while IDPs from Kalabancoro make up a further 12% of the total.

⁷ During November 2012 the IOM team will conduct location based assessments and individual assessments where required in the bordering communes of Bamako. The results will be reported in December 2012.

Graph 2: Distribution of IDP households by Commune in Bamako area



* Communes completed by October 10th, 2012

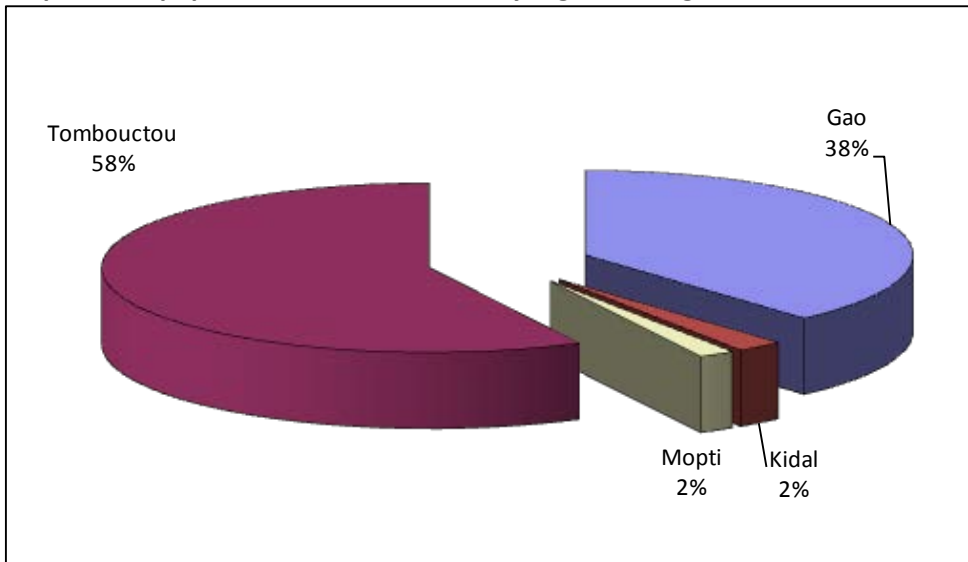
** Administratively belongs to Kati circle, Koulikoro region

As illustrated in the map in the annex, it can be observed that the southern Communes in the peripheral quarters of Bamako and its sub-urban areas, such as Kalabancoro and Niamana, have a reported a higher concentration of IDP households.

Population Movement

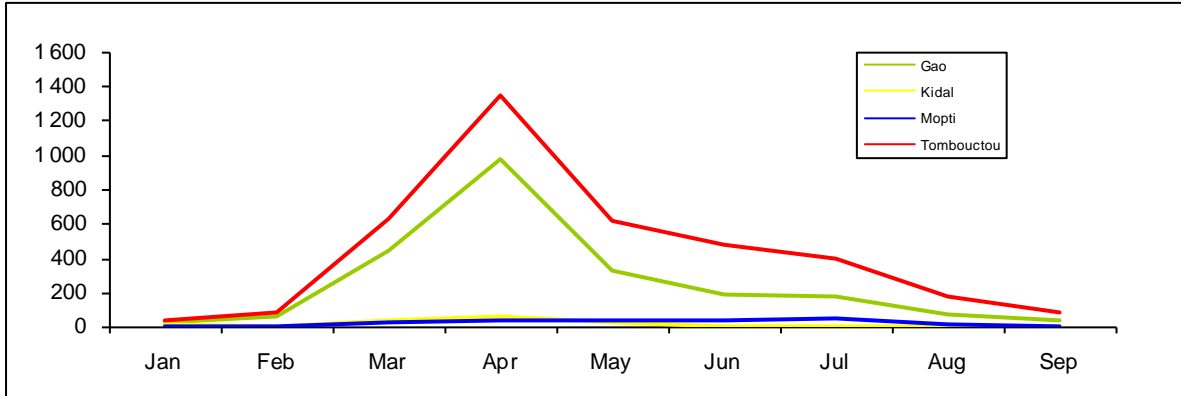
The IDP population in the Bamako area originates primarily from the regions of Tombouctou (58%) and Gao (38%), with only a very small percentage coming from Kidal (2%) and Mopti (2%) regions.

Graph 3: IDP population in Bamako area by region of origin

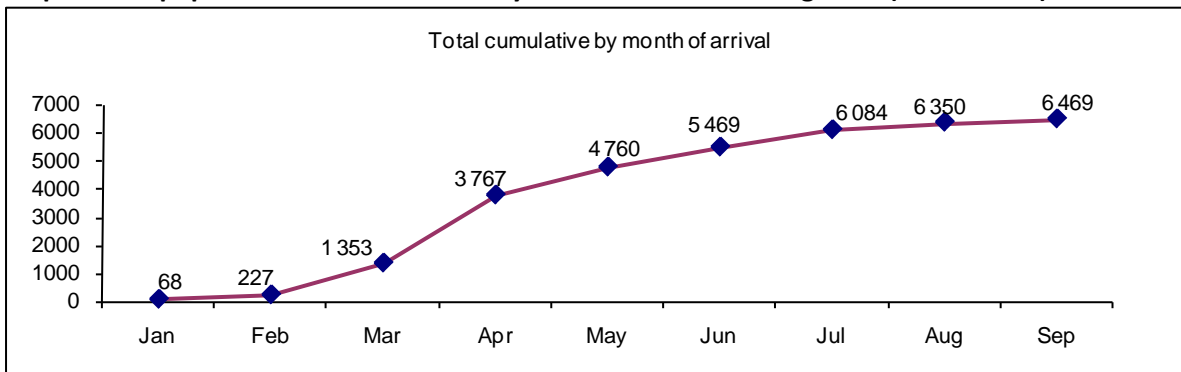


Whereas displacement has been reported from the beginning of 2012, the month of April 2012 saw the largest number of IDP households arrive in the Bamako area. More than 60% of the IDP households from Tombouctou, Gao and Kidal arrived between April and June 2012. The coming months saw additional households arrive in the area, although less and less each month. For example, approximately 1,000 households reported to have arrived between April and May, whilst only approximately 300 arrived between July and August, and another 100 between August and September. Very few families reported having transited through another region in Mali or another country.

Graph 4: IDP Population in Bamako area by origin and month of displacement during 2012 (Households)



Graph 5: IDP population in Bamako area by month of arrival during 2012 (Households)

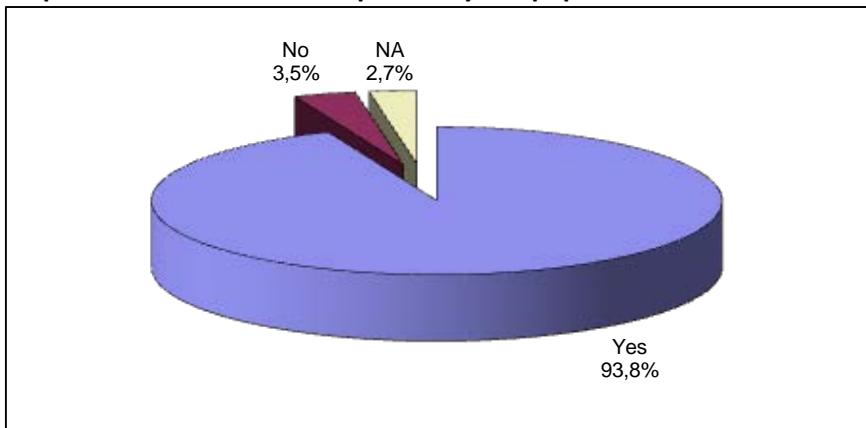


The displacement results from the conflict/violence, with 92% of all respondents having indicated it as the primary reason of displacement. Of these, 59% claimed that conflict/violence was the reason for their displacement, whereas another 33% noted the food crisis as a secondary reason for displacement. Only 2% of all respondents indicated the food crisis as the primary reason for displacement, whilst a further 5% did not answer.

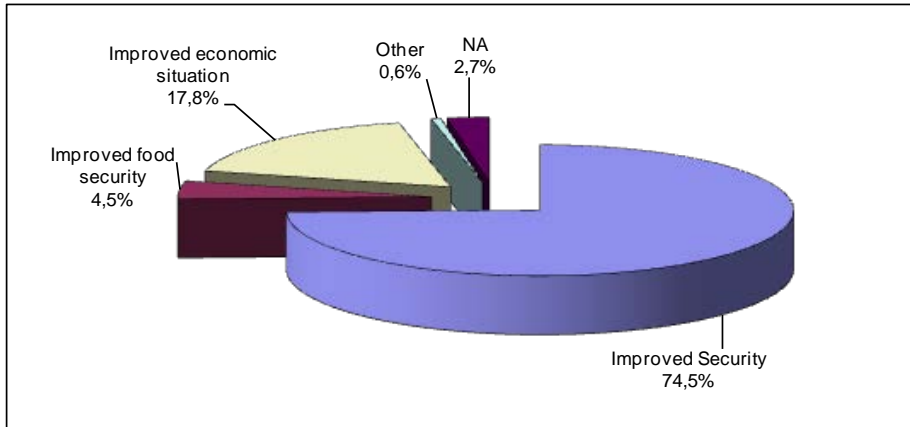
Return Intentions

The vast majority of the respondents, or 93.8%, indicated their intention to return to their place of origin. When asked under which condition they would be able to return, 75% of these indicated that an improved security situation was required for them to return, whereas 18% reported to necessitate a better economic situation for return. In addition, 4% indicated the need for improved food security, whilst a further 4% indicated other, did not know or did not answer.

Graph 6: Return Intentions reported by IDP population in Bamako area



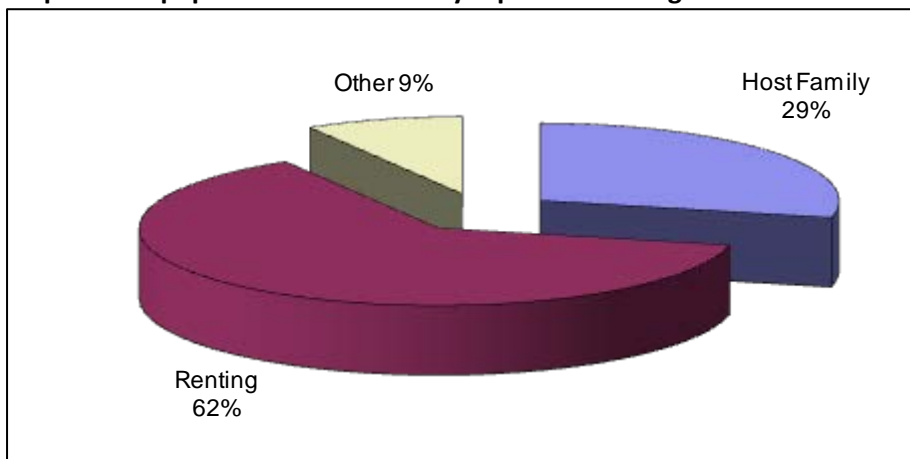
Graph 7: Condition for return indicated by those (93%) who intend to return



Approximately 21% of IDP respondents indicated that they go back and forth between their place of displacement and their place of origin. A further 70% noted that they have not done any back and forth movements, while the remaining 9% did not answer.

The majority of the IDP households in the Bamako area have reported that they are renting houses, at 62%. A smaller percentage, 29%, indicated that they are currently being housed in host family situations, with a further 9% indicating other locations, including collective housing situations such as in community centers.

Graph 8: IDP population in Bamako by reported housing situation



Informal reports from partner agencies as well as displaced persons have highlighted that renting may be becoming more prominent in order to ease the burden on the host families. At the same time, information received from sources alike indicates that many of those who are renting are not necessarily paying for the housing due to a lack of means. The recent activation of the Shelter cluster with UNHCR and IOM as co-leads is therefore timely in order to facilitate a more in depth analysis of the situation.

Needs & Assistance

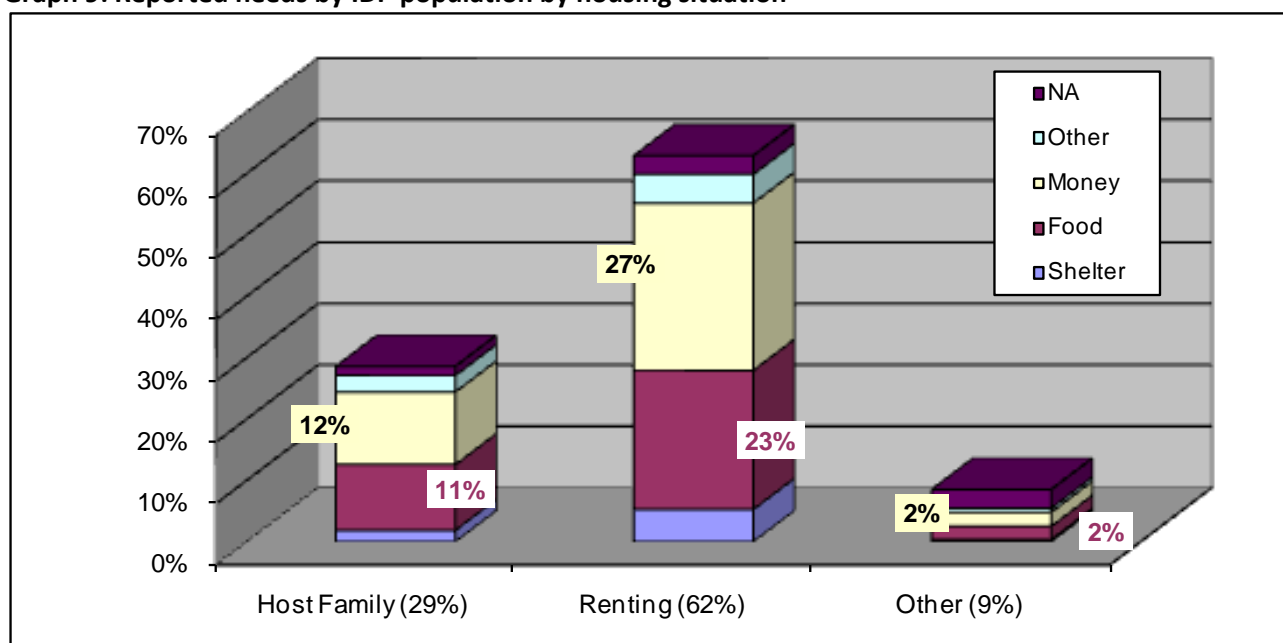
The primary needs expressed by the IDP households were money and food, followed by shelter. A total of 41% stated their primary need to be money, 35% expressed the need for food, whereas another 8% indicated shelter as the primary need. The remaining 8% indicated other needs, while 8% data not respond.

Table 3: Reported needs by IDP population by housing situation

Needs	Total	Host family (29%)	Renting (62%)	Other (9%)
Total	100%	100%	100%	100%
Shelter	8%	7%	8%	5%
Food	35%	37%	36%	25%
Money	41%	41%	43%	27%
Other	8%	9%	7%	7%
NA	8%	5%	5%	36%

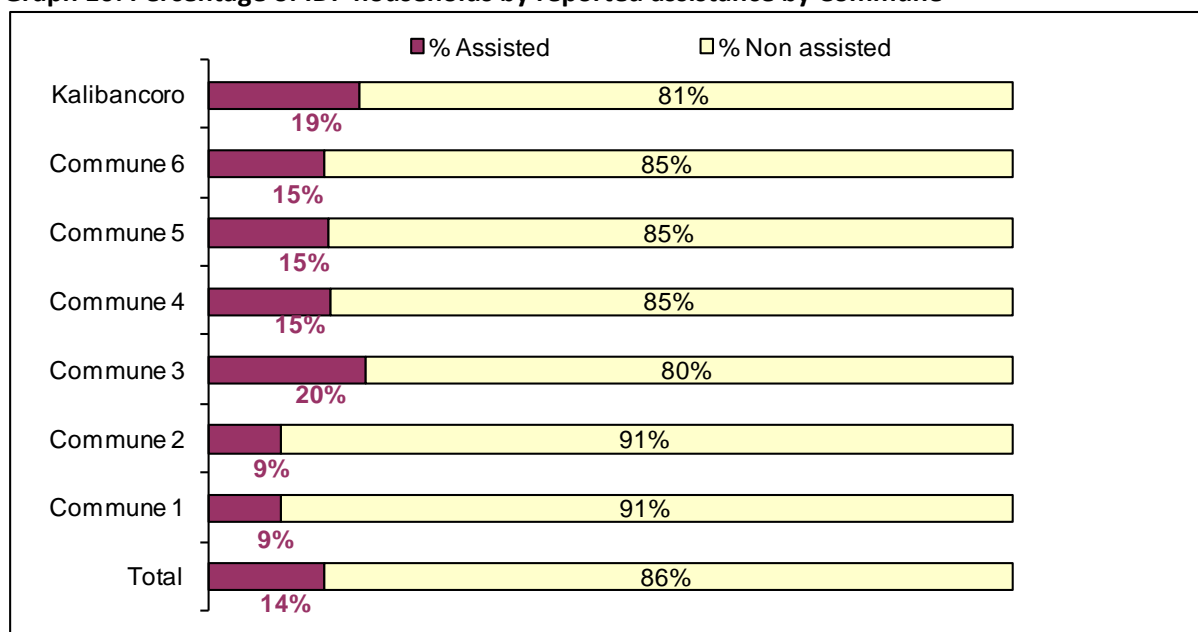
An analysis of the expressed needs and the displacement location indicates that generally the two primary needs of money and food have been reported relatively equally despite the type of housing situation of the IDP household. Specifically, a total of 43% of those who reported to be rented and 41% of those who reported to be in host families indicated their primary need as money. Similarly for food, 36% of those renting and 37% of those in host families stated it was their primary need.

Graph 9: Reported needs by IDP population by housing situation



Few IDP respondents reported having received assistance in the Bamako area since their arrival. In fact, only 14% of the assessed population noted that they had received assistance. The IDPs from Commune 3 and Kalabancoro showed the highest number of IDPs reporting having received some assistance, at 20% and 19% respectively. A total of 15% of the IDPs in Communes 4, 5 and 6 stated that they received assistance, whereas just 9% of the IDPs noted the same in Communes 1 and 2 of Bamako.

Graph 10: Percentage of IDP households by reported assistance by Commune



The type of assistance provided within the Bamako area at the time of the assessment, as reported by the IDP households, is primarily food assistance, at 73%. The provision of money was reported as the second highest type of assistance, at 16%, followed by shelter assistance, at 5%. The remaining 6% included other types of assistance.

Table 4: Number of IDP households that received assistance by type

Commune	Total	Shelter	Food	Money	Other
Grand	932	50	677	152	53
Commune 1	90	7	79	3	1
Commune 2	70	11	54	2	3
Commune 3	164	7	141	7	9
Commune 4	71	6	27	29	9
Commune 5	166	6	142	6	12
Commune 6	226	12	97	101	16
Kalabancoro	145	1	137	4	3

TRACKING & MONITORING ACTIVITIES

Utilizing the individual assessment results, IOM will continue to work alongside the Ministry of Humanitarian Affairs, Solidarity and the Elderly (MAHSPA), Direction Générale de la Protection Civile (DGPC), mayors, neighbourhood chiefs, as well as associations of displaced persons, to conduct regular monitoring and updating of the data on IDPs in the Bamako area. Field teams will conduct quartier based monitoring activities throughout November 2012, and where required, individual IDP household assessments will be carried out so as to ascertain the most comprehensive and up to date figures on the displaced population in the area.

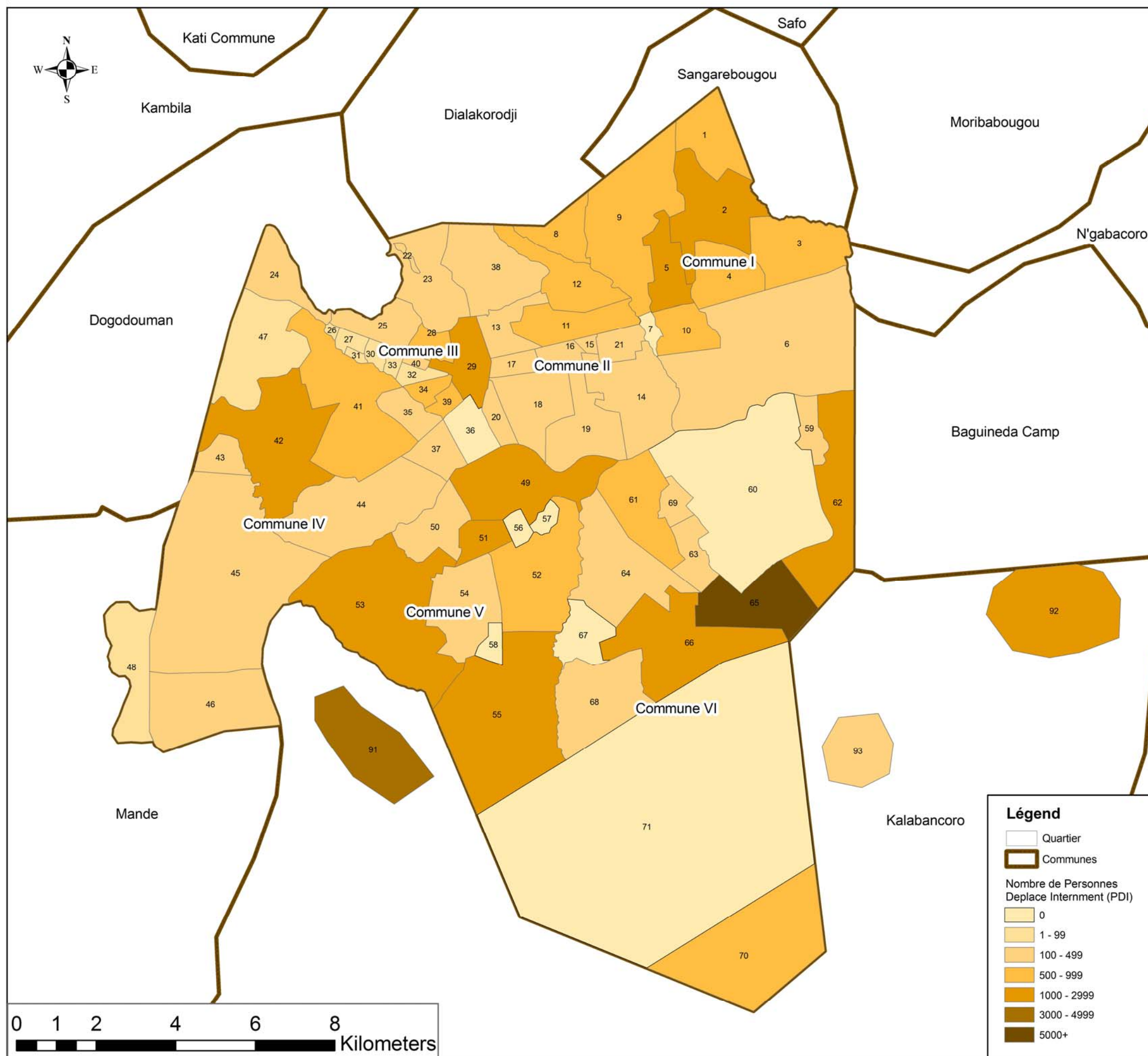
In November 2012, IOM is working on expanding its activities at regional level in accordance with the aim of the Commission on Population Movement to establish an IDP tracking and monitoring system throughout Mali.

CONTACT

For more details, please contact dtmiommali@iom.int

Personnes Déplacées Internes (PDI) à Bamako

Matrice de suivi de déplacement Octobre 2012.



Légend

[Quartier / # Menages / # Individus]

Commune 1 [979 / 8,080]

1. Fadjiguila [57 / 637]
2. Doumanzana [155 / 1135]
3. Boulkassoumbougou [91 / 758]
4. Dielibougou [59 / 511]
5. Korofina nord [264 / 2437]
6. Sotuba [22 / 149]
8. Sikoroni (mekin sikoro) [117 / 817]
9. Banconi [130 / 969]
10. Korofina sud [84 / 667]

Commune 2 [770 / 4,088]

11. Missira [171 / 985]
12. Hippodrome [114 / 700]
13. Medina coura [96 / 475]
14. Zone industriel [29 / 183]
15. Bakaribougou [16 / 114]
16. Quinzambougou [41 / 242]
17. Bagadadji [113 / 442]
18. Niarela [36 / 117]
19. T-S-F [34 / 213]
20. Bozola [78 / 367]
21. Bougouba [42 / 250]

Commune 3 [837 / 5,328]

22. Sogonafin/minko [35 / 294]
23. Koulouba/koulouba village [46 / 268]
24. Same [31 / 230]
25. N'tominkorobougou [60 / 343]
26. Niomirambougou [21 / 82]
27. Badialan 3 [9 / 47]
28. Darsalam [135 / 940]
29. Centre commercial [150 / 1015]
30. Badialan 2 [20 / 98]
31. Kodabougou [13 / 87]
32. Ouolofobougou [10 / 61]
33. Badialan 1 [7 / 39]
34. Dravela [78 / 605]
35. Dravela bolibana [26 / 121]
37. Bamako coura bolibana [29 / 196]
38. Point G [46 / 232]
39. Bamako coura [100 / 568]
40. Ouolofobougou bolibana [21 / 102]

Commune 4 [467 / 3,099]

41. Hamdallaye [73 / 574]
42. Lafiabougou [205 / 1400]
43. Taliko [44 / 299]
44. Djikoroni para [43 / 222]
45. Sebeninkoro [25 / 149]
46. Kalabambougou [70 / 419]
47. Lassa [1 / 4]
48. Sibiribougou [6 / 32]

Commune 5 [1097 / 8,093]

49. Badalabougou [161 / 1079]
50. Torokorobougou [55 / 439]
51. Quartier mali [161 / 1208]
52. Flabougou daoudabougou [133 / 989]
53. Baco djikoroni [200 / 1574]
54. Sabalibougou [54 / 323]
55. Kalabancoura [333 / 2481]

Commune 6 [1549 / 12,789]

59. Missabougou [27 / 180]
61. Magnambougou [87 / 702]
62. Yirimadio [230 / 2033]
63. Sokorodji [24 / 170]
64. Sogoniko [49 / 331]
65. Banankabougou [766 / 6379]
66. Faladie [187 / 1560]
68. Niamakoro [38 / 230]
69. Dianeguella [59 / 484]
70. Senou [82 / 720]

Kalibancoro [770 / 5,815]

91. Kalabancoro [519 / 3985]
92. Niamana [234 / 1677]
93. Siracoro [17 / 153]

Total [6469 / 47,292]

Légend

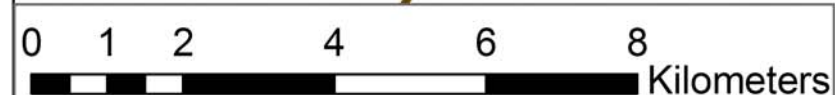
- Quartier
 - Communes
- Nombre de Personnes Déplace Internement (PDI)
- 0
 - 1 - 99
 - 100 - 499
 - 500 - 999
 - 1000 - 2999
 - 3000 - 4999
 - 5000+

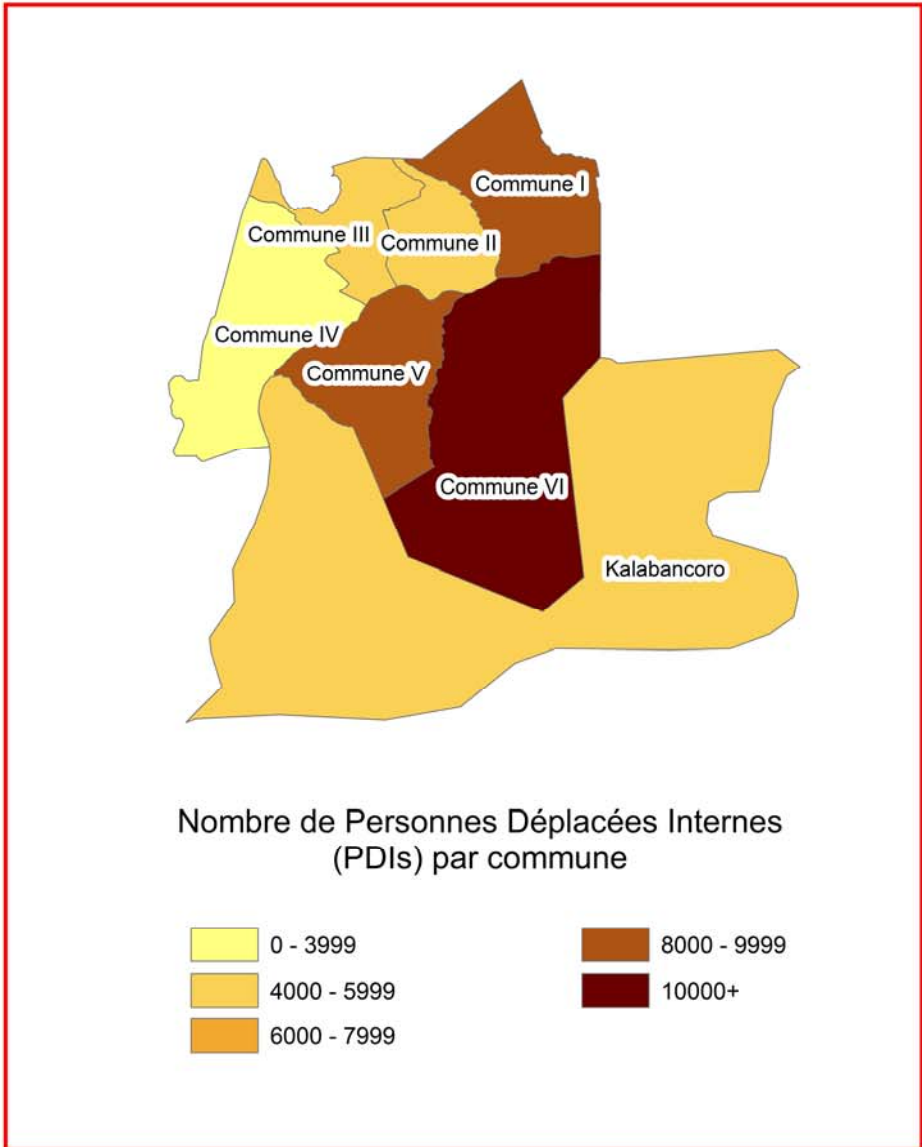
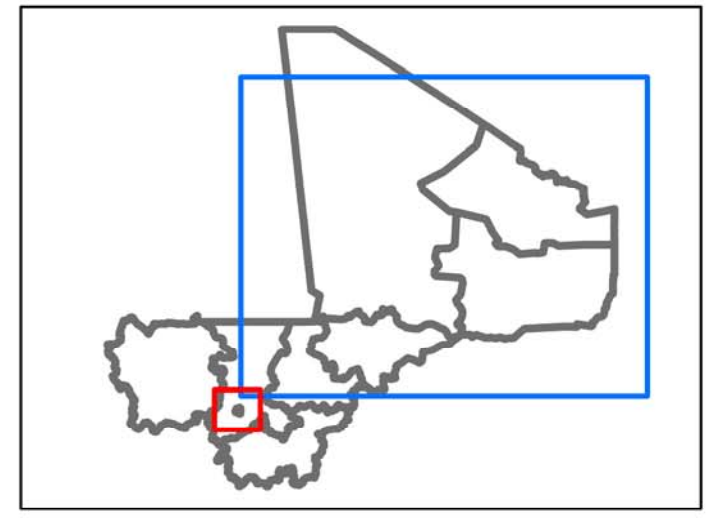
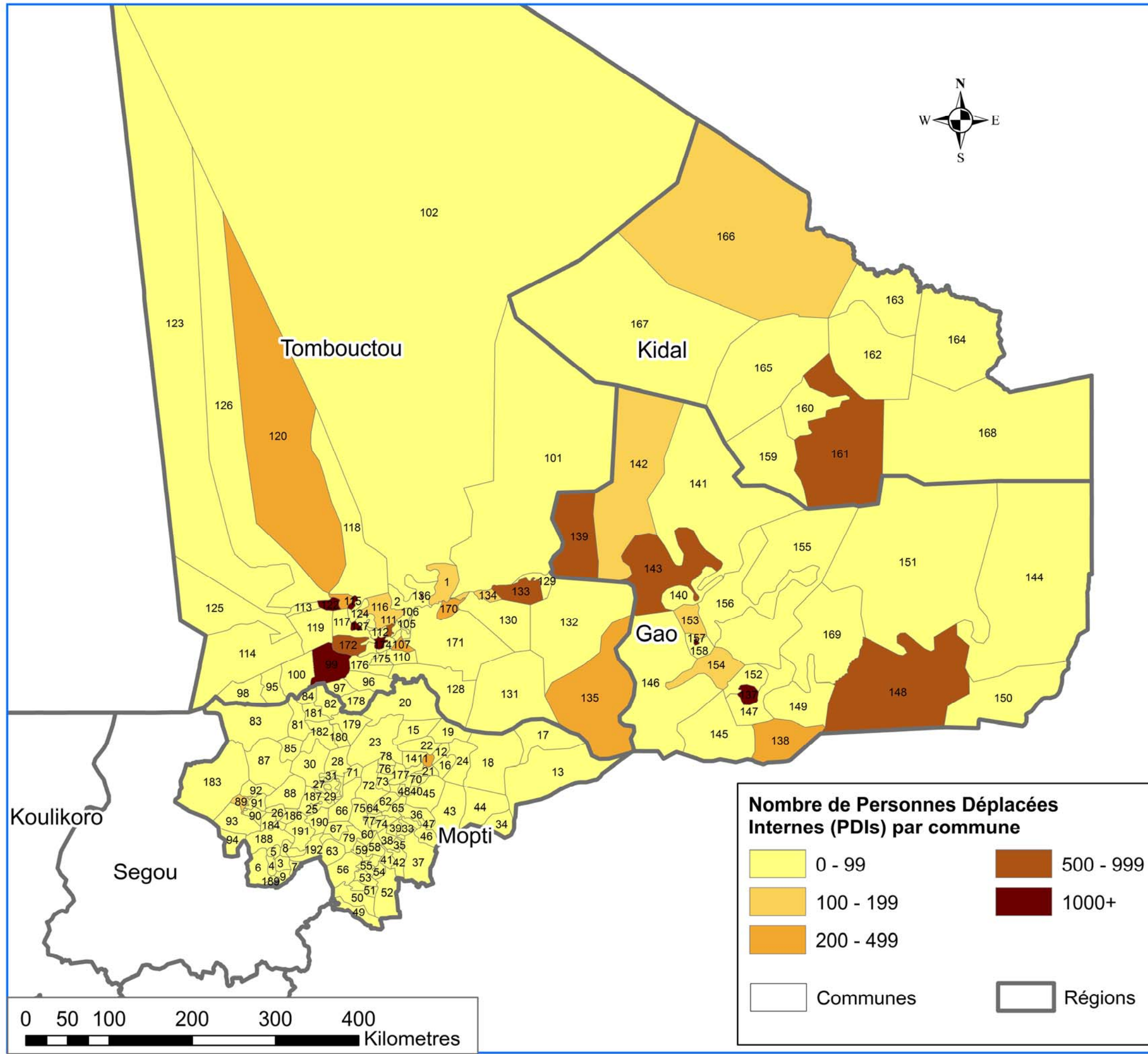
Données basées sur: Matrice de suivi de déplacement V2. Novembre 1^{er}, 2012.
Source de Données: IGM, IOM, CMP

Les frontières, les noms et les désignations sur cette carte n'impliquent pas la reconnaissance ou l'acceptation officielle par l'OIM.

Toutes les informations qui y sont données sont celles disponibles au moment où cette carte a été produite. Les mises à jour doivent être envoyées à OIM DTM Mali

Geographic Grid Geographic Coordinate System: WGS 1984 Datum: WGS 1984





Données basées sur: Matrice de suivi de déplacement V2, Novembre 1^{er}, 2012.
Source de Données: IGM;IOM;CMP

Les frontières, les noms et les désignations sur cette carte n'impliquent pas la reconnaissance ou l'acceptation officielle par l'OIM.

Toutes les informations qui y sont données sont celles disponibles au moment où cette carte a été produite. Les mises à jour doivent être envoyées à OIM DTM Mali

Geographic Grid Geographic Coordinate System: WGS 1984 Datum: WGS 1984

Map Legend Commune of Origin

Région	Map ID	Commune	Personnes Déplacé Internes (PDIs)
Grand Total			47,292
Gao Total			18,152
Gao	137	Ansongo	1,173
Gao	138	Ouattagouna	349
Gao	139	Bamba	545
Gao	140	Taboye	56
Gao	141	Tarkint	0
Gao	142	Temera	124
Gao	143	Bourem	934
Gao	144	Inekar	13
Gao	145	Tessit	40
Gao	146	N'tillit	0
Gao	147	Bourra	0
Gao	148	Menaka	914
Gao	149	Tin Hama	12
Gao	150	Anderamboukane	43
Gao	151	Tidermene	41
Gao	152	Bara	67
Gao	153	Sony Aliber	140
Gao	154	Gabero	112
Gao	155	Anchawadi	31
Gao	156	Tilemsi	50
Gao	157	Gao	13,452
Gao	158	Gounzoureye	41
Gao	169	Talataye	15
Kidal Total			1,082
Kidal	159	Aneff	30
Kidal	160	Essouk	0
Kidal	161	Kidal	864
Kidal	162	Abeibara	10
Kidal	163	Boghassa	0
Kidal	164	Tinzawatene	4
Kidal	165	Adjelhoc	34
Kidal	166	Tessalit	125
Kidal	167	Timtaghene	9
Kidal	168	Tin Essako	6
Mopti Total			836
Mopti	3	Djenne Commune	30
Mopti	4	Pondori	0
Mopti	5	Ouro Ali	0
Mopti	6	Nema Badenyakafo	0
Mopti	7	Madiama	0
Mopti	8	Derrary	0
Mopti	9	Dandougou Fakala	0
Mopti	10	Douentza Commune	324
Mopti	11	Tedie	0
Mopti	12	Petaka	0
Mopti	13	Mondoro	0
Mopti	14	Koubewel Koundia	0
Mopti	15	Korarou	0
Mopti	16	Kerena	0
Mopti	17	Hombori	95
Mopti	18	Haire	0
Mopti	19	Gandamia	0

Région	Map ID	Commune	Personnes Déplacé Internes (PDIs)
Mopti	20	Djaptodji	7
Mopti	21	Dianwely	0
Mopti	22	Debere	0
Mopti	23	Dangol Bore	0
Mopti	24	Dallah	0
Mopti	25	Mopti Commune	87
Mopti	26	Sasalbe	0
Mopti	27	Kounari	0
Mopti	28	Konna	12
Mopti	29	Fatoma	1
Mopti	30	Dialloubé	5
Mopti	31	Borondougou	0
Mopti	32	Bassirou	0
Mopti	33	Youdiou	0
Mopti	34	Yoro	0
Mopti	35	Pel Maoude	0
Mopti	36	Madougou	0
Mopti	37	Koro	18
Mopti	38	Koporokendie Na	0
Mopti	39	Koporo Pen	0
Mopti	40	Kassa	0
Mopti	41	Dougoutene 2	0
Mopti	42	Dougoutene 1	0
Mopti	43	Diougani	0
Mopti	44	Dinangourou	0
Mopti	45	Diankabou	0
Mopti	46	Bondo	0
Mopti	47	Barapireli	0
Mopti	48	Bamba	0
Mopti	49	Ouonkoro	0
Mopti	50	Sokoura	1
Mopti	51	Tori	0
Mopti	52	Baye	0
Mopti	53	Diallassagou	0
Mopti	54	Koulogon Habe	0
Mopti	55	Lessagou Habe	0
Mopti	56	Segue	0
Mopti	57	Soubala	0
Mopti	58	Bankass	10
Mopti	59	Dimbal Habe	0
Mopti	60	Kani Bozon	0
Mopti	61	Bandiagara Commune	4
Mopti	62	Wadouba	0
Mopti	63	Timiri	0
Mopti	64	Soroly	0
Mopti	65	Sangha	0
Mopti	66	Pignari Bana	0
Mopti	67	Pignari	0
Mopti	68	Pelou	0
Mopti	69	Ondougou	0
Mopti	70	Metoumou	0
Mopti	71	Lowol Gueou	0
Mopti	72	Kendie	0
Mopti	73	Kende	0

Région	Map ID	Commune	Personnes Déplacé Internes (PDIs)
Mopti	74	Dourou	0
Mopti	75	Doucoumbo	0
Mopti	76	Dogani Bere	0
Mopti	77	Dandoli	0
Mopti	78	Borko	0
Mopti	79	Bara Sara	0
Mopti	80	Segue Ire	0
Mopti	81	Youwarou	39
Mopti	82	N'dodjiga	0
Mopti	83	Farimake	0
Mopti	84	Dongo	31
Mopti	85	Bimbere Tama	0
Mopti	86	Tenenkou Commune	44
Mopti	87	Toguere-Coumbe	0
Mopti	88	Togoro Kotia	0
Mopti	89	Sougoulbe	115
Mopti	90	Ouro Guire	0
Mopti	91	Ouro Ardo	0
Mopti	92	Diondori	3
Mopti	93	Diaka	0
Mopti	94	Diafarabe	0
Mopti	177	Diamnati	0
Mopti	179	Korombana	0
Mopti	180	Oroube Doude	0
Mopti	181	Dirma	0
Mopti	182	Deboye	0
Mopti	183	Kareri	10
Mopti	184	Togue Mourari	0
Mopti	185	Ouro Modi	0
Mopti	186	Koubaye	0
Mopti	187	Socoura	0
Mopti	188	Kewa	0
Mopti	189	Niansanari	0
Mopti	190	Sio	0
Mopti	191	Soye	0
Mopti	192	Fakala	0
Mopti	193	Femaye	0
Tombouctou Total			27,222
Tombouctou	1	Bourem Inaly	153
Tombouctou	2	Alafia	62
Tombouctou	95	Dianke	53
Tombouctou	96	Fittouga	65
Tombouctou	97	Koumaira	0
Tombouctou	98	Lere	79
Tombouctou	99	Souboundou	1703
Tombouctou	100	Soumpi	55
Tombouctou	101	Ber	6
Tombouctou	102	Salam	65
Tombouctou	103	Arham	14
Tombouctou	104	Bourem Sidi Amar	829
Tombouctou	105	Dangha	35
Tombouctou	106	Garbakoira	40
Tombouctou	107	Haibongo	367
Tombouctou	108	Kirchamba	78

Région	Map ID	Commune	Personnes Déplacé Internes (PDIs)
Tombouctou	109	Kondi	35
Tombouctou	110	Sareyamou	100
Tombouctou	111	Tinguereguif	7
Tombouctou	112	Dire	2595
Tombouctou	113	Adarmalane	24
Tombouctou	114	Tilemsi	6
Tombouctou	115	Bintagoungou	1170
Tombouctou	116	Douekire	112
Tombouctou	117	Doukouria	29
Tombouctou	118	Essakane	13
Tombouctou	119	Gargando	7
Tombouctou	120	Issa Bery	479
Tombouctou	121	Kaneye	0
Tombouctou	122	M'bouna	1686
Tombouctou	123	Razelma	0
Tombouctou	124	Tele	57
Tombouctou	125	Alzounoub	0
Tombouctou	126	Tin Aicha	0
Tombouctou	127	Goundam Commune	3608
Tombouctou	128	Bambara Maoude	37
Tombouctou	129	Banicane	18
Tombouctou	130	Hamzakona	14
Tombouctou	131	Inadiatafane	14
Tombouctou	132	Ouinerden	5
Tombouctou	133	Rharous	967
Tombouctou	134	Serere	129
Tombouctou	135	Gossi	224
Tombouctou	136	Tombouctou	11005
Tombouctou	170	Lafia	249
Tombouctou	171	Haribomo	20
Tombouctou	172	Tonka	843
Tombouctou	173	Tindirma	61
Tombouctou	174	Tienkour	0
Tombouctou	175	Binga	24
Tombouctou	176	Banikane Narhawa	49
Tombouctou	178	N'gorkou	31

Annex 1: IDP Households in Bamako area by location and region of origin

Comune		Location	Total	Gao	Kidal	Mopti	Tombouctou
Grand Total			6,469	2,338	154	171	3,806
Commune 1 Total			979	405	15	15	544
Commune 1	1	Fadjiguila	57	32	1	1	23
Commune 1	2	Doumanzana	155	62	3	2	88
Commune 1	3	Boukassoumbougou	91	40	2		49
Commune 1	4	Dielibougou	59	14	2	1	42
Commune 1	5	Korofina nord	264	114	4	2	144
Commune 1	6	Sotuba	22	12			10
Commune 1	8	Sikoroni (mekin sikoro)	117	60	2	5	50
Commune 1	9	Banconi	130	42	1	1	86
Commune 1	10	Korofina sud	84	29		3	52
Commune 2 Total			770	138	10	80	542
Commune 2	11	Missira	171	31	1	4	135
Commune 2	12	Hippodrome	114	23		3	88
Commune 2	13	Medina coura	96	7		5	84
Commune 2	14	Zone industriel	29	9	3	2	15
Commune 2	15	Bakaribougou	16	2	1	1	12
Commune 2	16	Quinzambougou	41	7		1	33
Commune 2	17	Bagadadji	113	10		55	48
Commune 2	18	Niarela	36	7	1	1	27
Commune 2	19	T-S-F	34	8	3	2	21
Commune 2	20	Bozola	78	21		6	51
Commune 2	21	Bougouba	42	13	1		28
Commune 3 Total			837	181	21	21	614
Commune 3	22	Sogonafin/minko Koulouba/koulouba village	35	20	10		5
Commune 3	23	Same	46	19		2	25
Commune 3	24	N'tominkorobougou	31	4	2	2	23
Commune 3	25	Niomioubougou	60	17	3	4	36
Commune 3	26	Niomirambougou	21	4	1	1	15
Commune 3	27	Badialan 3	9	2		1	6
Commune 3	28	Darsalam	135	16		1	118
Commune 3	29	Centre commercial	150	15	2	2	131
Commune 3	30	Badialan 2	20		1	1	18
Commune 3	31	Kodabougou	13	3	1	1	8
Commune 3	32	Ouolofobougou	10	1	1	1	7
Commune 3	33	Badialan 1	7				7
Commune 3	34	Dravela	78	10		2	66
Commune 3	35	Dravela bolibana	26	11			15
Commune 3	37	Bamako coura bolibana	29	15		1	13
Commune 3	38	Point G	46	31		1	14
Commune 3	39	Bamako coura	100	11			89
Commune 3	40	Ouolofobougou bolibana	21	2		1	18
Commune 4 Total			467	131	5	4	327
Commune 4	41	Hamdallaye	73	27			46
Commune 4	42	Lafiabougou	205	50		1	154
Commune 4	43	Taliko	44	5			39
Commune 4	44	Djikoroni para	43	18	3	1	21
Commune 4	45	Sebeninkoro	25	4	1	2	18
Commune 4	46	Kalabambougou	70	21			49
Commune 4	47	Lassa	1	1			
Commune 4	48	Sibiribougou	6	5	1		

Comune		Location	Total	Gao	Kidal	Mopti	Tombouctou
Commune 5 Total			1,097	461	20	16	600
Commune 5	49	Badalabougou	161	56	3	6	96
Commune 5	50	Torokorobougou	55	18			37
Commune 5	51	Quartier mali Flabougou	161	55	2	4	100
Commune 5	52	daoudabougou	133	94	3		36
Commune 5	53	Baco djikoroni	200	87	3	2	108
Commune 5	54	Sabalibougou	54	27	1		26
Commune 5	55	Kalabancoura	333	124	8	4	197
Commune 6 Total			1,549	739	61	18	731
Commune 6	59	Missabougou	27	14			13
Commune 6	61	Magnambougou	87	48	1	1	37
Commune 6	62	Yirimadio	230	111	7		112
Commune 6	63	Sokorodji	24	11	3	2	8
Commune 6	64	Sogoniko	49	19	1		29
Commune 6	65	Banankabougou	766	391	35	7	333
Commune 6	66	Faladie	187	79	13	3	92
Commune 6	68	Niamakoro	38	14		1	23
Commune 6	69	Dianeguella	59	26		2	31
Commune 6	70	Senou	82	26	1	2	53
Kati Total			770	283	22	17	448
Kati	91	KALABANCORO	519	189	11	12	307
Kati	92	NIAMANA SIRACORO	234	86	11	5	132
Kati	93	MEGUE TANA	17	8			9

Annex 2: IDP Individuals in Bamako area by location and region of origin

Comune	Location	Total	Gao	Kidal	Mopti	Tombouctou
Grand Total		47,292	18,152	1,082	836	27,222
Commune 1 Total		8,080	3,275	118	101	4,586
Commune 1	1 Fadjiguila	637	366	15	10	246
Commune 1	2 Doumanzana	1,135	436	18	11	670
Commune 1	3 Boulkassoumbougou	758	304	13		441
Commune 1	4 Dielibougou	511	110	34	7	360
Commune 1	5 Korofina nord	2,437	1,020	27	20	1,370
Commune 1	6 Sotuba	149	90			59
Commune 1	8 Sikoroni (mekin sikoro)	817	384	6	27	400
Commune 1	9 Banconi	969	295	5	5	664
Commune 1	10 Korofina sud	667	270		21	376
Commune 2 Total		4,088	806	81	260	2,941
Commune 2	11 Missira	985	189	8	17	771
Commune 2	12 Hippodrome	700	129		12	559
Commune 2	13 Medina coura	475	29		21	425
Commune 2	14 Zone industriel	183	94	35	2	52
Commune 2	15 Bakaribougou	114	13	6	10	85
Commune 2	16 Quinzambougou	242	44		10	188
Commune 2	17 Bagadadji	442	61		133	248
Commune 2	18 Niarela	117	32	1	3	81
Commune 2	19 T-S-F	213	51	23	14	125
Commune 2	20 Bozola	367	93		38	236
Commune 2	21 Bougouba	250	71	8		171
Commune 3 Total		5,328	1,094	148	88	3,998
Commune 3	22 Sogonafin/minko	294	162	84		48
Commune 3	23 Koulouba/koulouba village	268	100		9	159
Commune 3	24 Same	230	29	8	8	185
Commune 3	25 N'tominkorobougou	343	101	18	24	200
Commune 3	26 Niomirambougou	82	15	2	6	59
Commune 3	27 Badialan 3	47	18		4	25
Commune 3	28 Darsalam	940	90		8	842
Commune 3	29 Centre commercial	1,015	103	10	5	897
Commune 3	30 Badialan 2	98		10	2	86
Commune 3	31 Kodabougou	87	15	7	1	64
Commune 3	32 Ouolofobougou	61	10	9	4	38
Commune 3	33 Badialan 1	39				39
Commune 3	34 Dravela	605	83		6	516
Commune 3	35 Dravela bolibana	121	63			58
Commune 3	37 Bamako coura bolibana	196	96		5	95
Commune 3	38 Point G	232	164		2	66
Commune 3	39 Bamako coura	568	38			530
Commune 3	40 Ouolofobougou bolibana	102	7		4	91
Commune 4 Total		3,099	874	18	10	2,197
Commune 4	41 Hamdallaye	574	187			387
Commune 4	42 Lafiabougou	1,400	356		6	1,038
Commune 4	43 Taliko	299	35			264
Commune 4	44 Djikoroni para	222	101	12	2	107
Commune 4	45 Sebeninkoro	149	33	4	2	110
Commune 4	46 Kalabambougou	419	128			291
Commune 4	47 Lassa	4	4			
Commune 4	48 Sibiribougou	32	30	2		

Comune		Location	Total	Gao	Kidal	Mopti	Tombouctou
Commune 5 Total			8,093	3,476	119	102	4,396
Commune 5	49	Badalabougou	1,079	372	22	41	644
Commune 5	50	Torokorobougou	439	168			271
Commune 5	51	Quartier mali Flabougou	1,208	413	9	32	754
Commune 5	52	daoudabougou	989	701	10		278
Commune 5	53	Baco djikoroni	1,574	704	24	4	842
Commune 5	54	Sabalibougou	323	152	3		168
Commune 5	55	Kalabancoura	2,481	966	51	25	1,439
Commune 6 Total			12,789	6,423	444	143	5,779
Commune 6	59	Missabougou	180	106			74
Commune 6	61	Magnambougou	702	406	12	4	280
Commune 6	62	Yirimadio	2,033	1,055	44		934
Commune 6	63	Sokorodji	170	86	22	6	56
Commune 6	64	Sogoniko	331	135	5		191
Commune 6	65	Banankabougou	6,379	3,403	258	52	2,666
Commune 6	66	Faladie	1,560	708	96	21	735
Commune 6	68	Niamakoro	230	89		1	140
Commune 6	69	Dianeguella	484	208		40	236
Commune 6	70	Senou	720	227	7	19	467
Kati Total			5,815	2,204	154	132	3,325
Kati	91	KALABANCORO	3,985	1,509	81	103	2,292
Kati	92	NIAMANA SIRACORO	1,677	616	73	29	959
Kati	93	MEGUE TANA	153	79			74

Annex 3: IDP Population by commune and region of origin and period of displacement

Region	Circle	Commune	Total HHs	01)Jan-Mar HHS	02)Apr-Jun HHS	3)Jul-Sep HHS	Total IND	01)Jan-Mar IND	02)Apr-Jun IND	3)Jul-Sep IND
Grand Total			10,600	1,353	4,116	1,000	47,292	9,961	30,567	6,764
Gao Total			2,338	544	1,504	290	18,152	4,130	11,854	2,168
Gao	Ansongo	Ansongo	146	33	94	19	1,173	229	791	153
Gao	Ansongo	Bara	10	1	7	2	67	5	48	14
Gao	Ansongo	Ouattagouna	39	16	16	7	349	108	169	72
Gao	Ansongo	Talataye	1		1		15		15	
Gao	Ansongo	Tessit	8	1	6	1	40	8	27	5
Gao	Ansongo	Tin Hama	1		1		12		12	
Gao	Bourem	Bamba	68	11	46	11	545	97	352	96
Gao	Bourem	Taboye	6	1	4	1	56	11	38	7
Gao	Bourem	Temera	14	2	9	3	124	16	80	28
Gao	Bourem	Bourem	116	24	72	20	934	201	580	153
Gao	Gao	Anchawadi	4	1	3		31	9	22	
Gao	Gao	Gabero	11	2	6	3	112	12	71	29
Gao	Gao	Gounzoureye	5		2	3	41		16	25
Gao	Gao	Sony Aliber	24	6	12	6	140	50	73	17
Gao	Gao	Tilemsi	7	1	5	1	50	5	44	1
Gao	Gao	Gao	1,744	376	1,163	205	13,452	2,838	9,108	1,506
Gao	Menaka	Anderamboukane	6	3	2	1	43	23	12	8
Gao	Menaka	Inekar	2	2			13	13		
Gao	Menaka	Menaka	120	60	54	6	914	475	390	49
Gao	Menaka	Tidermene	6	4	1	1	41	30	6	5
Kidal Total			154	50	92	12	1,082	334	655	93
Kidal	Abeibara	Abeibara	1	1			10	10		
Kidal	Abeibara	Tinzawatene	1	1			4	4		
Kidal	Kidal	Anefif	4	2	2		30	12	18	
Kidal	Kidal	Kidal	123	36	75	12	864	238	533	93
Kidal	Tessalit	Adjelhoc	5	3	2		34	17	17	
Kidal	Tessalit	Tessalit	18	6	12		125	44	81	
Kidal	Tessalit	Timtaghene	1	1			9	9		
Kidal	Tin-Essako	Tin Essako	1		1		6		6	
Mopti Total			171	26	85	60	836	174	404	258
Mopti	Bandiagara	Bandiagara Commune	1		1		4		4	
Mopti	Bankass	Bankass	1		1		10		10	
Mopti	Bankass	Sokoura	1		1		1		1	
Mopti	Djenne	Djenne Commune	1	1			30	30		
Mopti	Douentza	Djaptodji	1	1			7	7		
Mopti	Douentza	Hombori	14	6	5	3	95	40	40	15
Mopti	Douentza	Douentza Commune	56	10	29	17	324	65	160	99
Mopti	Koro	Koro	2		1	1	18		9	9
Mopti	Mopti	Dialloubé	1		1		5		5	

Region	Circle	Commune	Total HHS	01)Jan-Mar HHS	02)Apr-Jun HHS	3)Jul-Sep HHS	Total IND	01)Jan-Mar IND	02)Apr-Jun IND	3)Jul-Sep IND
Mopti	Mopti	Fatoma	1			1	1			1
Mopti	Mopti	Konna	2		1	1	12		8	4
Mopti	Mopti	Mopti Commune	17	4	10	3	87	9	65	13
Mopti	Tenenkou	Diondori	2		1	1	3		2	1
Mopti	Tenenkou	Kareri	3		1	2	10		1	9
Mopti	Tenenkou	Sougoulbe	36	1	12	23	115	3	34	78
Mopti	Tenenkou	Tenenkou Commune	15	1	12	2	44	6	31	7
Mopti	Youwarou	Dongo	6	1	3	2	31	4	16	11
Mopti	Youwarou	Youwarou	11	1	6	4	39	10	18	11
Tombouctou Total			3,806	733	2,435	638	27,222	5,323	17,654	4,245
Tombouctou	Dire	Arham	4	1	3		14	1	13	
Tombouctou	Dire	Binga	6		5	1	24		23	1
Tombouctou	Dire	Bourem Sidi Amar	126	19	68	39	829	156	414	259
Tombouctou	Dire	Dangha	5	1	4		35	7	28	
Tombouctou	Dire	Garbakoira	8	1	4	3	40	4	26	10
Tombouctou	Dire	Haibongo	53	11	25	17	367	57	170	140
Tombouctou	Dire	Kirchamba	13		6	7	78		38	40
Tombouctou	Dire	Kondi	4		3	1	35		22	13
Tombouctou	Dire	Sareyamou	17	2	8	7	100	14	53	33
Tombouctou	Dire	Tindirma	9	2	6	1	61	22	30	9
Tombouctou	Dire	Tinguereguif	1	1			7	7		
Tombouctou	Dire	Dire	379	79	230	70	2,595	550	1,672	373
Tombouctou	Goundam	Adarmalane	3	1	2		24	6	18	
Tombouctou	Goundam	Tilemsi	1			1	6			6
Tombouctou	Goundam	Bintagoungou	158	18	105	35	1,170	137	805	228
Tombouctou	Goundam	Douekire	19	5	6	8	112	28	46	38
Tombouctou	Goundam	Doukouria	2	1	1		29	15	14	
Tombouctou	Goundam	Essakane	3		3		13		13	
Tombouctou	Goundam	Gargando	1		1		7		7	
Tombouctou	Goundam	Issa Bery	71	14	28	29	479	91	188	200
Tombouctou	Goundam	M'bouna	193	24	118	51	1,686	215	997	474
Tombouctou	Goundam	Tele	10		7	3	57		46	11
Tombouctou	Goundam	Tonka	113	19	70	24	843	132	546	165
Tombouctou	Goundam	Goundam Commune	507	93	310	104	3,608	717	2,215	676
Tombouctou	Gourma-Rharous	Bambara Maoude	6	1	4	1	37	9	25	3
Tombouctou	Gourma-Rharous	Banicane	2		2		18		18	
Tombouctou	Gourma-Rharous	Gossi	31	7	17	7	224	56	118	50
Tombouctou	Gourma-Rharous	Hamzakona	4		2	2	14		4	10
Tombouctou	Gourma-Rharous	Haribomo	2		2		20		20	
Tombouctou	Gourma-Rharous	Inadiatafane	1		1		14		14	
Tombouctou	Gourma-Rharous	Ouinerden	1	1			5	5		
Tombouctou	Gourma-Rharous	Rharous	133	26	82	25	967	198	623	146
Tombouctou	Gourma-Rharous	Serere	14	1	7	6	129	6	72	51
Tombouctou	Niafunke	Banikane Narhawa	9	3	4	2	49	18	24	7
Tombouctou	Niafunke	Dianke	7	3	3	1	53	25	23	5

Region	Circle	Commune	Total HHS	01)Jan-Mar HHS	02)Apr-Jun HHS	3)Jul-Sep HHS	Total IND	01)Jan-Mar IND	02)Apr-Jun IND	3)Jul-Sep IND
Tombouctou	Niafunke	Fittouga	10	3	6	1	65	19	38	8
Tombouctou	Niafunke	Lere	11	6	4	1	79	34	35	10
Tombouctou	Niafunke	N'gorkou	4	1	3		31	16	15	
Tombouctou	Niafunke	Souboundou	222	58	124	40	1,703	457	954	292
Tombouctou	Niafunke	Soumpi	6	1	5		55	10	45	
Tombouctou	Tombouctou	Alafia	9	4	3	2	62	25	23	14
Tombouctou	Tombouctou	Ber	2	1		1	6	3		3
Tombouctou	Tombouctou	Bourem Inaly	18	2	15	1	153	15	128	10
Tombouctou	Tombouctou	Lafia	26	2	16	8	249	13	143	93
Tombouctou	Tombouctou	Salam	10	2	6	2	65	11	41	13
Tombouctou	Tombouctou	Tombouctou	1,572	319	1,116	137	11,005	2,244	7,907	854

Annex 4: Reported assistance received by quartier

Comune	N	Location	Total	Shelter	Food	Money	Other
Grand Total			932	50	677	152	53
Commune 1							
Total			90	7	79	3	1
Commune 1	1	Fadjiguila	2		2		0
Commune 1	2	Doumanzana	2		2		0
Commune 1	3	Boukassoumbougou	20		16	3	1
Commune 1	4	Dielibougou	9		9		0
Commune 1	5	Korofina nord	21	7	14		0
Commune 1	6	Sotuba	6		6		0
Commune 1	8	Sikoroni (mekin sikoro)	12		12		0
Commune 1	9	Banconi	15		15		0
Commune 1	10	Korofina sud	3		3		0
Commune 2							
Total			70	11	54	2	3
Commune 2	11	Missira	12	2	10		0
Commune 2	12	Hippodrome	10	2	7		1
Commune 2	13	Medina coura	5	4	1		0
Commune 2	14	Zone industriel	4		1	2	1
Commune 2	15	Bakaribougou	9		9		0
Commune 2	16	Quinzambougou	7	1	5		1
Commune 2	17	Bagadadji	6		6		0
Commune 2	18	Niarela	1	1			0
Commune 2	19	T-S-F	11		11		0
Commune 2	20	Bozola	4		4		0
Commune 2	21	Bougouba	1	1			0
Commune 3							
Total			164	7	141	7	9
Commune 3	22	Sogonafin/minko	15		15		0
Commune 3	23	Koulouba/koulouba village	5	1	4		0
Commune 3	24	Same	2		2		0
Commune 3	25	N'tominkorobougou	18	2	14		2
Commune 3	26	Niomirambougou	1	1			0
Commune 3	27	Badialan 3	1		1		0
Commune 3	28	Darsalam	21		16	4	1
Commune 3	29	Centre commercial	13	2	11		0
Commune 3	30	Badialan 2	5		3		2
Commune 3	31	Kodabougou	3		3		0
Commune 3	32	Oulofobougou	5		3		2
Commune 3	33	Badialan 1	2		2		0
Commune 3	34	Dravela	5		5		0
Commune 3	35	Dravela bolibana	5		5		0
Commune 3	37	Bamako coura bolibana	9		8		1
Commune 3	38	Point G	26	1	22	2	1
Commune 3	39	Bamako coura	18		17	1	0
Commune 3	40	Oulofobougou bolibana	10		10		0
Commune 4							
Total			71	6	27	29	9
Commune 4	41	Hamdallaye	11		4	5	2
Commune 4	42	Lafiabougou	30	3	15	8	4
Commune 4	43	Taliko	6	2	3		1
Commune 4	44	Djikoroni para	4		2	2	0
Commune 4	45	Sebeninkoro	3			3	0
Commune 4	46	Kalabambougou	15	1	2	11	1
Commune 4	48	Sibiribougou	2		1		1

Comune	N	Location	Total	Abri	Alimentaire	Argent	Other
Commune 5 Total			166	6	142	6	12
Commune 5	49	Badalabougou	16		13	1	2
Commune 5	50	Torokorobougou	11		7		4
Commune 5	51	Quartier mali Flabougou	13		12		1
Commune 5	52	daoudabougou	36	2	31	1	2
Commune 5	53	Baco djikoron	35	1	29	4	1
Commune 5	54	Sabalibougou	3	1	2		0
Commune 5	55	Kalabancoura	52	2	48		2
Commune 6 Total			226	12	97	101	16
Commune 6	59	Missabougou	2		1	1	0
Commune 6	61	Magnambougou	10		6	4	0
Commune 6	62	Yirimadio	51	1	32	17	1
Commune 6	63	Sokorodji	6		4	2	0
Commune 6	64	Sogoniko	10	1	4	5	0
Commune 6	65	Banankabougou	83	9	27	37	10
Commune 6	66	Faladie	49	1	16	28	4
Commune 6	68	Niamakoro	6		4	2	0
Commune 6	69	Dianeguella	5		3	2	0
Commune 6	70	Senou	4			3	1
Kati Total			145	1	137	4	3
Kati	91	KALABANCORO	93		92		1
Kati	92	NIAMANA SIRACORO	50	1	44	3	2
Kati	93	MEGUE TANA	2		1	1	0