

Disability Inclusion Task Team (DITT)

Earthquake Response
Hatay Shelter meeting
13 April 2023



Inter-Agency
Coordination
Türkiye

Disability Inclusion Task Team

Disability Inclusion Task Team (DITT)

- National inter-sectorial coordination platform under the 3RP
- Established in September 2022
- Providing resources and technical support on disability inclusion
- Local organizations and confederations of persons with disabilities, UN agencies, INGOs, and NGOs are part of the DITT
- Co-chaired by:
 - Ammar Hasan Bek (ammar.hasanbek@ri.org) from RI
 - Rafid Shkwana (rshkwana@iom.int) from IOM



Inter-Agency
Coordination
Türkiye


Disability Inclusion Task Team

Sectoral technical guidance on DI in emergencies

- Provides sector-specific recommendations for disability inclusive data collection and accessible and inclusive programming.

Link:

[Disability Inclusion Task Team \(DITT\): Sectoral technical guidance on disability inclusion in emergencies \(Earthquake response – February 2023\)](#)



Disability Inclusion Task Team

Sectoral technical guidance on disability inclusion in emergencies
(Earthquake response – February 2023)

Sector	Actions	
	Inclusive data collection	Accessible and inclusive programming
Water, Sanitation and Hygiene (WASH)	<ol style="list-style-type: none"> 1. Adapt WASH assessment and monitoring tools to collect information on the capacities, barriers/challenges and needs of older people and people with disabilities. 2. For individual/household assessments, consider collecting sex, age and disability disaggregated data. 3. Include older people and people with disabilities in WASH assessments and monitoring activities. 	<ol style="list-style-type: none"> 1. Design, construct and adapt accessible water supply and sanitation facilities. 2. Review and adapt distribution methods and supplies to provide safe and equitable access for older people and people with disabilities. 3. Sensitize the community, staff, and partners on the right of older people and people with disabilities to access WASH activities and services. 4. Build the capacities of staff and partners to make WASH services, facilities, and programs inclusive of older people and people with disabilities.
	<p>Example of questions to be included:</p> <ul style="list-style-type: none"> - # of people with disabilities/older people who require additional support to access WASH facilities. - What adaptation would you suggest to make WASH facilities accessible for older people and people with disabilities? (e.g., ramps, wider doors, wider surface area, etc.). 	<p>Examples of actions to be considered:</p> <ul style="list-style-type: none"> - Train staff on accessibility standards for temporary WASH programming and facilities. - Include accessibility features in design of WASH facilities. - Distribute additional hygiene items for people with disabilities/older people. - After consulting with the community, provide specific items (e.g., grab rails, mobile ramps, potties, commodes, toilet chairs, child and adult diapers and washable leak-proof mattress protector) - Consider door to door distributions. - Allocate additional budget (2% of the total budget) for accessibility in WASH projects.
Shelter, and household items	<ol style="list-style-type: none"> 1. Adapt shelter and settlement assessment and monitoring tools to collect information on the capacities, barriers/challenges and needs of older people and people with disabilities. 	<ol style="list-style-type: none"> 1. Design, construct and adapt shelters and settlements to be accessible. 2. Provide household and shelter-related items that are suitable, safe, and accessible for use by older people and people with disabilities.

Why inclusive and accessible shelter programming?

- Access to shelter is a fundamental human right.
- Access to shelter guarantees safety for persons with disabilities.
- Access to shelter improves the quality of life for persons with disabilities
- Access to shelter guarantees access to other services like health, education and others.
- Accessible shelter guarantees independence for persons with disabilities and reduces burden on caregivers.



Inter-Agency
Coordination
Türkiye

Disability Inclusion Task Team

Inclusive shelter programming- Design

- Include disability related questions into your assessment tools.
- Consult with persons with diverse disabilities when developing a new project and designs.
- Sensitize your staff on the inclusion of persons with disabilities.
- Train your staff on accessibility standards.
- Include additional budget to adapt shelter for persons with disabilities.



Inter-Agency
Coordination
Türkiye

Disability Inclusion Task Team

Inclusive shelter programming- Implementation

- Provide information related to shelter in different format (e.g., written, verbal, etc.)
- Use different communication channels (door-to-door, social media, posters/leaflets, through OPDs, community leaders, etc.)
- Conduct joint assessments with persons with disabilities when implementing shelter rehabilitation projects.
- Avoid isolating persons with disabilities in separate sectors/blocks.



Inter-Agency
Coordination
Türkiye

Disability Inclusion Task Team

Inclusive shelter programming- M&E

- Make sure persons with disabilities are regularly involved in evaluation exercises.
- Make sure persons with disabilities are informed about and have access to complaint mechanism.
- Make sure persons with disabilities are asked about their feedback and recommendations.

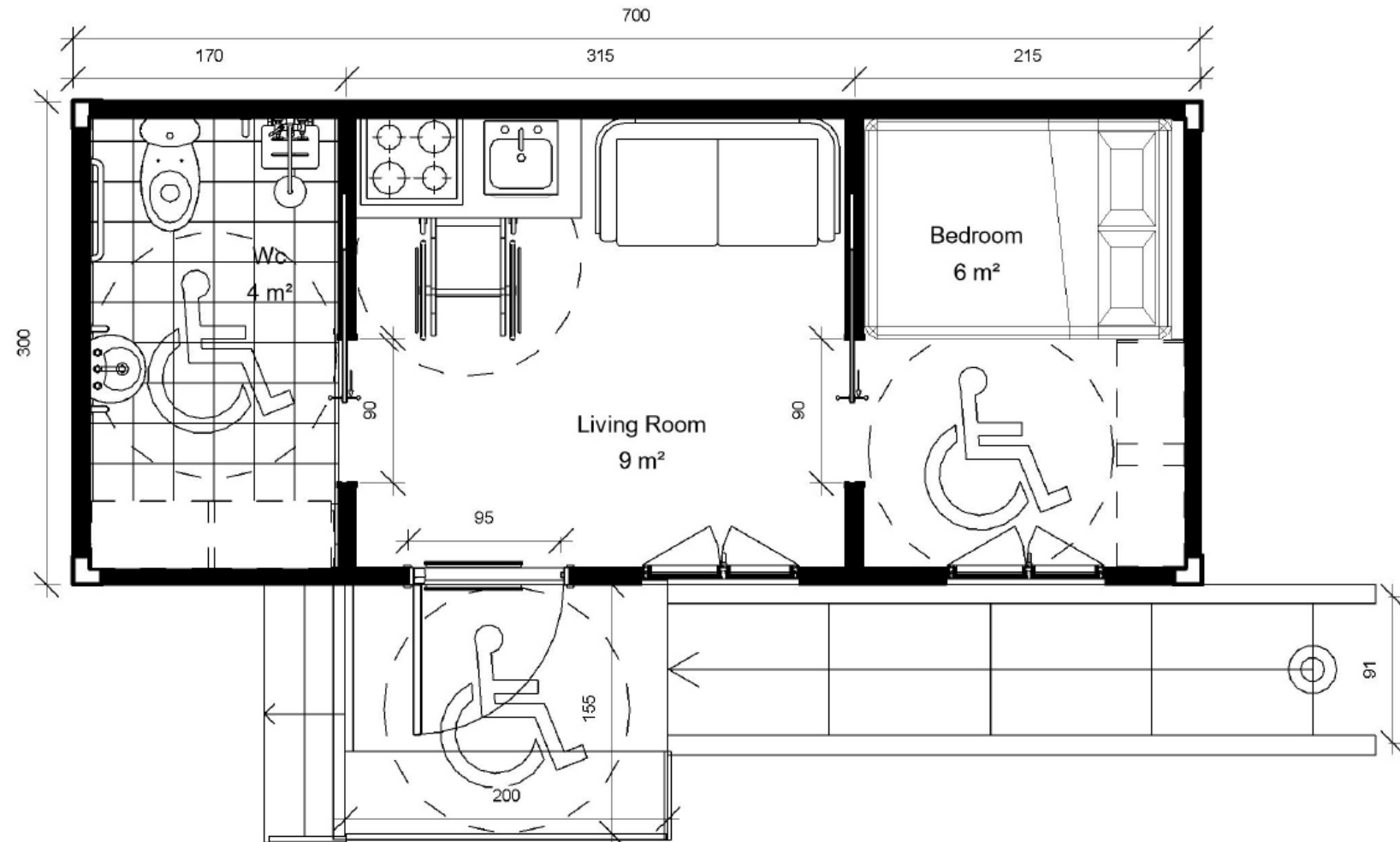


Inter-Agency
Coordination
Türkiye

Disability Inclusion Task Team

Accessible shelter design

- Make sure there is enough space for wheelchair users to move freely inside their shelter.
- Make sure the shelter is free of obstacles



How can DITT support other sectors?

- Review tools and documents developed by sectors and other relevant actors.
- Share contact information of Organizations of Persons with Disabilities(OPDs) in affected provinces.
- Share tools and resources with sector members.
- Awareness raising and capacity building of sector members.



Inter-Agency
Coordination
Türkiye

Disability Inclusion Task Team

Relevant resources

- [DITT Webpage: Türkiye: Disability Inclusion Task Team | ReliefWeb Response](#)
- [Türkiye: Disability Inclusion Task Team \(DITT\) - Tips on disability-inclusive emergency response \(Earthquake\)](#)
- [Disability Inclusion Task Team \(DITT\): Sectoral technical guidance on disability inclusion in emergencies \(Earthquake response – February 2023\)](#)
- [All under one roof - Inclusive shelter toolkit | Shelter Cluster](#)
- [Inclusion of people with disabilities in humanitarian action | IASC](#)
- [Humanitarian inclusion standards for older people and people with disabilities | HI](#)
- [Disability-Inclusive Humanitarian Action Checklists | UNICEF](#)
- [Disability-Inclusive Humanitarian Action Toolkit | UNICEF](#)
- [Humanitarian Hands on Tool | CBM](#)
- [Sphere Standards CAMP Interactive Handbook](#)
- [Inclusive WASH - Menstrual Hygiene Management Friendly and Accessible WASH Facilities for Emergencies | IFRC](#)
- [Disability Inclusive WASH practices | UNICEF](#)
- [Compendium of accessible WASH technologies](#)
- [Priority Assistive Products list | WHO](#)



Inter-Agency
Coordination
Türkiye

Disability Inclusion Task Team

Thank you!



**Inter-Agency
Coordination**
Türkiye

Disability Inclusion Task Team