

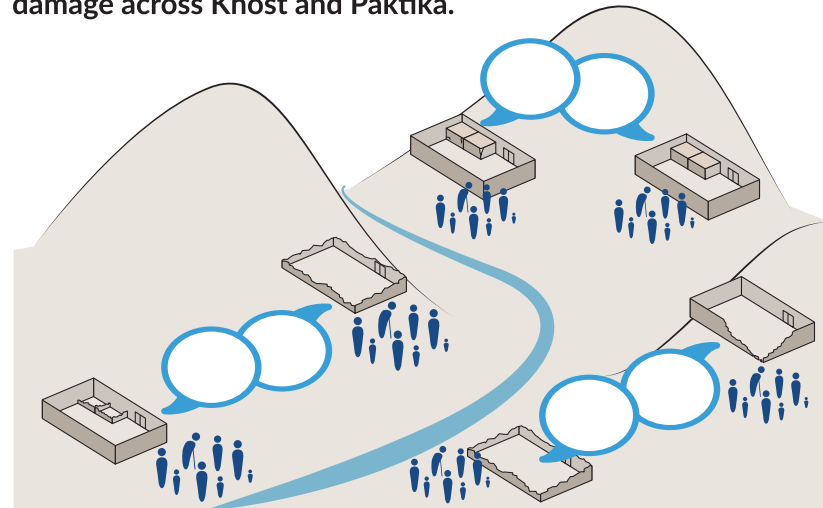


# ASSISTANCE MODALITIES

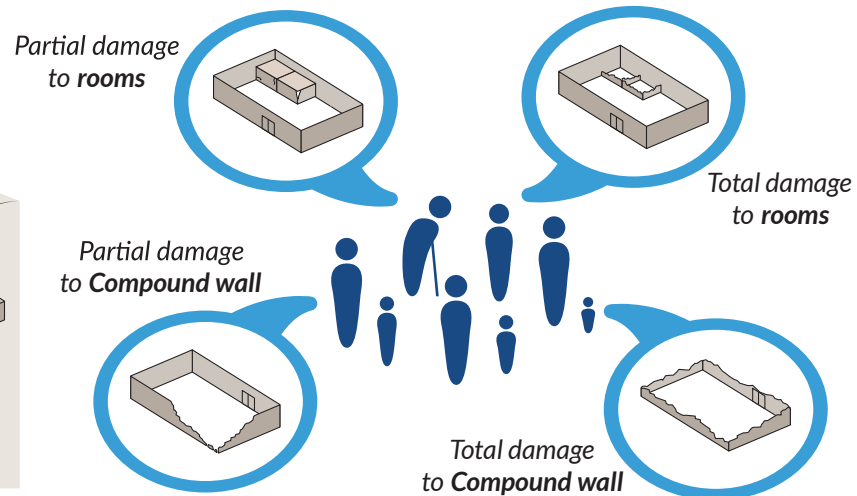
## Earthquake Response Khost & Paktika

Space for logos implementing organisation

During and after the earthquake many houses sustained damage across Khost and Paktika.



For some families the damage affected their **Rooms**, for others their **Compound walls**, for some a combination of **both**.



### Contact information

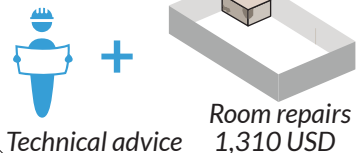
Add information about implementing organisation and contact info

Add information about AWAAZ

To support the families in the repair or (re)building of their homes, Assistance packages have been calculated, which are the same for all beneficiaries

#### In the case of Partial Damage to rooms

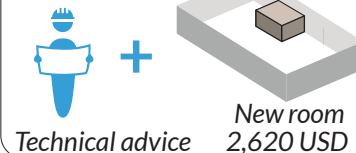
the Assistance package was calculated to be



Room repairs  
1,310 USD

#### In the case of Total Damage to rooms

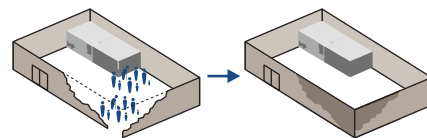
the Assistance package was calculated to be



New room  
2,620 USD

#### The cost for repair/(re)-construction of compound walls and common areas

should be shared between households that live within the same compound, using their allocated assistance package



Compound wall repairs

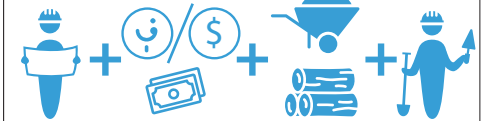
There are many different organisations providing technical assistance to these families, through different methods

#### Example 1



Technical advice + money\* + labour

#### Example 2



Technical advice + money\* + material + labour

#### Example 3



Technical advice + material + labour

#### Example 4



Technical advice + money\*

\*Money can be given in AFs or USD, depending on implementing organisation