



Ethiopia Shelter/NFI, CCCM, and HLP – 2nd Round Prioritization and Strategic Response Overview- 2026

Responses and Priority Woredas

@Vision Ethiopia

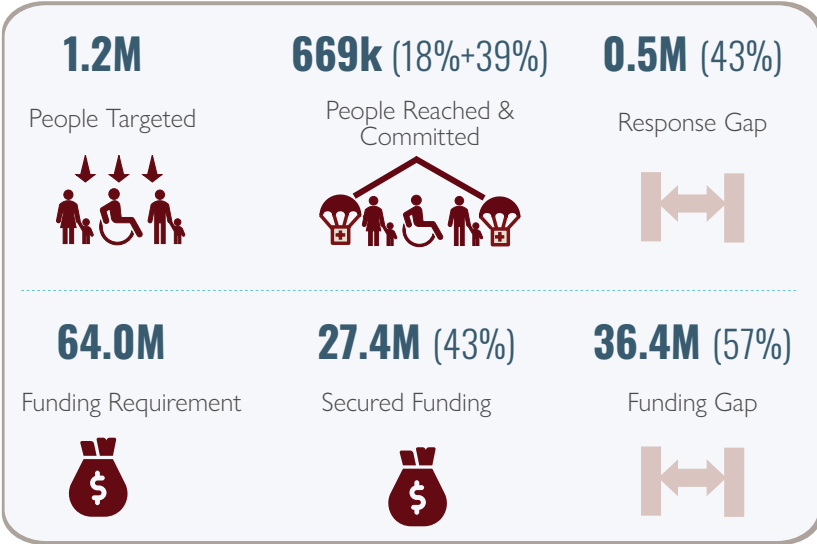




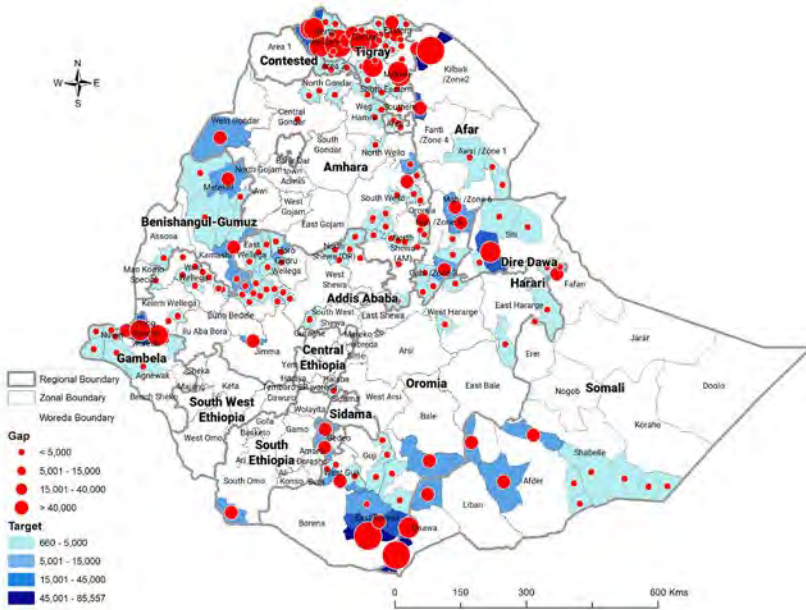
Ethiopia | Emergency Shelter and NFI Cluster Monthly Response Monitoring Dashboard

As of April 30 2026

Key Figures



People Targeted and Reached



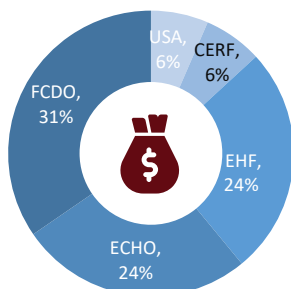
Partnerships, and Donor Support

Partners Coordinated



21
NNGO: 12
INGO: 7
UN: 2

Funding distribution Top 5 Donors



Key Achievements

- CCPM and Action Plan Conducted:** The ES/NFI Cluster conducted its annual CCPM, during which approximately 80% of partners reported that the Cluster is on track to deliver its core functions. Following the survey, the Cluster organized a workshop and developed an action plan to address partners' recommendations and strengthen coordination, operational follow-up, and accountability.
- Common Pipeline Expanded Response Capacity and Localization:** Through the ESNFI Common Pipeline, the Cluster supported 8 partners with emergency shelter and NFI items, enabling a total reach of 10,740 displaced HHS of whom 27% represent additional beneficiaries beyond what Cluster partners could achieve independently, made possible by savings generated through the donation mechanism.
- Flood Preparedness and Risk Mapping Strengthened:** Considering the upcoming Kiremt season, the Cluster mapped flood-prone areas, potential displacement hotspots, partner presence, and available response capacities to strengthen preparedness and rapid response readiness.
- HLP Mainstreaming and Operational Coordination Enhanced:** The Cluster strengthened integration of HLP considerations within shelter, CCCM, and return discussions, including monitoring of eviction risks, land-related challenges, and protection concerns affecting displaced and returning populations in prioritized locations.

Funded through EHF and ECHO, the Pipeline also advanced localization by extending support to national NGOs, covering distribution costs and last-mile transportation to prioritized and hard-to-reach locations.

Gap Analysis by Region

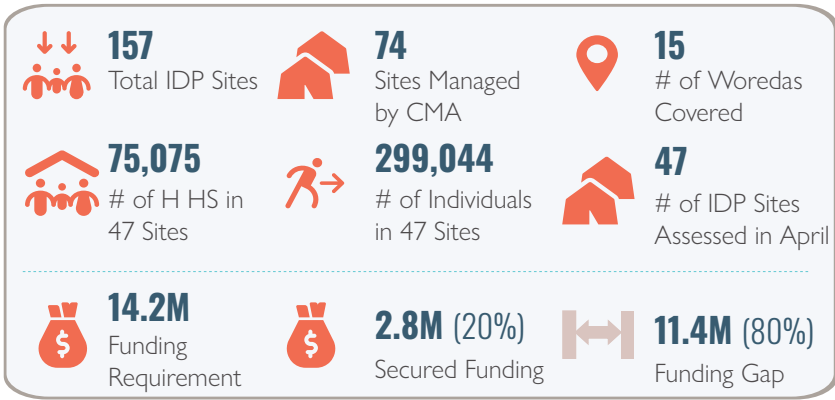
Reached People (% of the target)	Region	People Targeted
22k (18%)	Afar	124k
29k (30%)	Amhara	97k
0	BGR	34k
6k (88%)	Contested	6k
5k (7%)	Gambella	67k
20k (9%)	Oromia	216k
4k (2%)	Somali	198k
6k (41%)	SE	71k
125k (28%)	Tigray	441k



Ethiopia | CCCM Cluster Service Monitoring Summary Dashboard

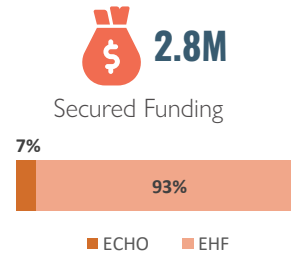
As of April 30 2026

Key Figures

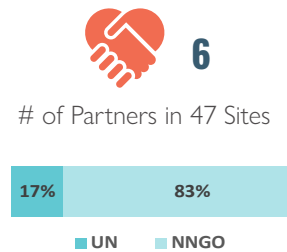


Donor Support

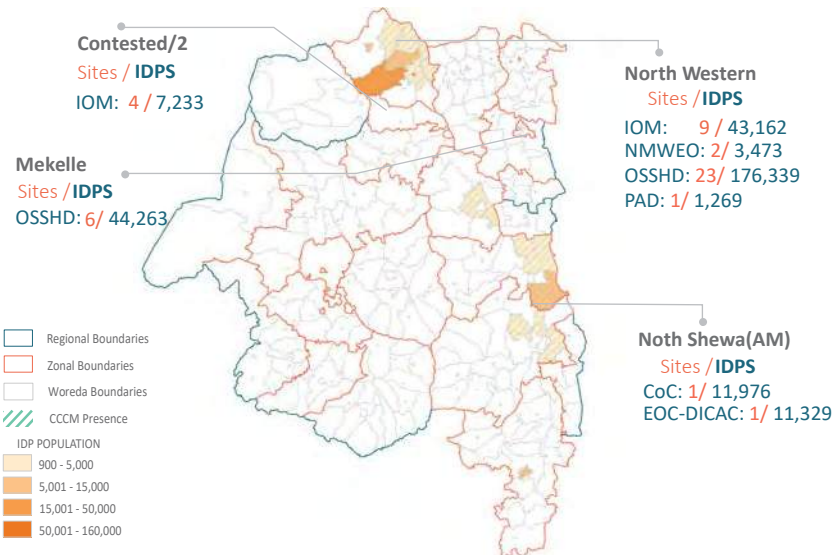
Donors' Contribution %



#Partners of Agencies by Type



Partner Presence



Key Achievements

- CCCM Operational Presence Expanded:** CCCM site management support expanded to the Amhara region, particularly to 8 woredas in the Amhara Region and 13 sites, hosting large numbers of IDPs in displacement sites and collective centers with significant coordination and service-delivery needs.
- Area-Based Approaches Strengthened:** Coordination and operational engagement through Area-Based Approaches continued to expand in prioritized displacement-affected locations to strengthen integrated response planning, referral pathways, and operational coordination.
- Preparedness and Environmental Risk Monitoring Enhanced:** CCCM partners supported the identification of 67 IDP sites exposed to flooding, strong winds, and deteriorating site conditions, strengthening preparedness, contingency planning, and risk-informed prioritization ahead of the Kiremt season.

Situation Overview

The humanitarian situation in Ethiopia continues to be shaped by climatic shocks, localized insecurity, prolonged displacement, and increasing pressure on already limited humanitarian resources. Many displaced and vulnerable households remain in collective centers, displacement sites, and host communities, facing inadequate shelter conditions, overcrowding, limited access to essential household items, and gaps in site level coordination and service delivery.

With the upcoming rainy season, there is increasing concern over aging and temporary shelters in several locations, particularly in areas exposed to flooding, strong winds, and poor site conditions. At the same time, service delivery gaps and poorly performing indicators in some displacement sites continue to highlight the need for strengthened CCCM and shelter and NFI interventions, particularly in overcrowded and underserved locations.

Operational challenges including fuel shortages, inflation, low-quality shelter materials in local markets, concentration of humanitarian organizations in limited locations, reports of eviction and unavailability of land in some areas, and funding gaps, continue to affect the scale, coverage and timelessness for CCCM, HLP and shelter and NFI responses, while significant humanitarian needs persist across multiple regions.

“ Displacement, climate shocks, and resource gaps continue to strain vulnerable communities in Ethiopia, with shelter risks rising as the rainy season approaches.

”



Prioritization and Strategic Response



ES/NFI Target

R2 Target
294k



Urgent Requirement
\$12.1M



Pipeline Requirement
\$3.9M



CCCM Target

R2 Target
481k



Urgent Requirement
\$4.1M

Priority Overview

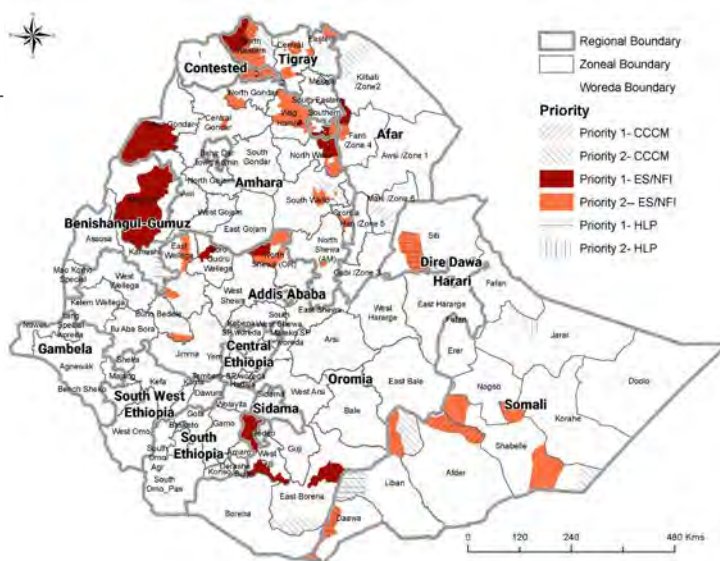
The Shelter/NFI, HLP and CCCM prioritization exercises identified Priority 1 and Priority 2 locations across Tigray, Afar, Amhara, Oromia, Somali, Benishangul-Gumuz, and Contested areas, based on humanitarian severity, shelter conditions, displacement dynamics, coordination and service gaps, protection concerns, and operational feasibility.

For Shelter/NFI, the prioritization identified 20 Priority 1 and 46 Priority 2 woredas. The analysis considered severity levels, displacement figures, response coverage, security and access constraints, neglected responses, sub-national priorities, and emerging humanitarian concerns. The highest number of Priority 1 woredas were identified in Amhara, Oromia, and Tigray, reflecting continued shelter and NFI needs linked to prolonged displacement, overcrowding, deteriorating shelter conditions, and limited response coverage.

For CCCM, the prioritization identified 67 Priority 1 and 76 Priority 2 sites across major displacement-affected regions. The exercise focused on sites with significant coordination and service delivery gaps, poor site conditions, environmental exposure, limited camp management presence, and protection concerns. The highest concentration of Priority 1 sites was identified in Tigray followed by Afar.

For HLP, Priority 1 concerns were identified across several locations in Tigray, Somali, Benishangul Gumuz, and Contested areas, particularly in locations affected by return movements, land access constraints, eviction risks, and relocation-related challenges. Several locations categorized as Priority 2 or 3 under the Shelter/NFI response were identified as Priority 1 from an HLP perspective, reflecting increasing protection and land-related concerns affecting displaced and returning populations.

A total of 5 woredas were prioritized as Priority 1 under both the CCCM and Shelter/NFI responses, reflecting locations with significant humanitarian needs, shelter concerns, coordination gaps, and operational importance.



Analysis of the 1st Round of ES/NFI Cluster Prioritization indicates that, of the 24 woredas classified as Priority 1 for shelter and NFI response, 63% received some level of humanitarian assistance. Among the 42 woredas classified as Priority 2, approximately 50% were covered through ongoing, planned, or committed interventions.

The prioritization was conducted in consultation with sub-national coordination structures, zonal focal points, partners, EDRMC, DRMO, HLP actors, and government counterparts to ensure that the analysis reflects operational realities, response capacities, and emerging humanitarian concerns across affected regions.

Essential Shelter Items Pipeline

The ES/NFI Common Pipeline remains a key enabler of the prioritized response, supporting the timely and cost-effective delivery of quality-assured Essential Shelter assistance, particularly in locations requiring rapid response and in areas where local market capacity remains limited or inconsistent.

For pipeline allocations, the cluster coordinates closely with sub-national coordination structures, Area-Based Coordination mechanisms, and rapid response mechanisms. As part of the cluster's localization approach, national NGOs are supported through coverage of distribution-related costs and last-mile delivery to ensure that locations with access challenges and limited operational presence are not left behind.

For 2026, the ES/NFI Cluster plans to support at least 118k households through the common pipeline. So far, approximately 10,740 displacement-affected HHs have been reached through the pipeline, while complementing partner responses through pipeline support enabled an additional 2,853 HHs to be reached. Over the next three months, the cluster plans to support approximately 38,550 displacement-affected households through 11 partners.

As part of the localization approach, the cluster is also supporting national NGOs through distribution-related costs and last-mile delivery support to improve response reach in prioritized and hard-to-reach locations.

Strategic Priorities Approaches

The Shelter/NFI, CCCM, and HLP responses will continue to prioritize high-severity and underserved locations affected by displacement, poor shelter conditions, overcrowding, environmental exposure, protection concerns, land and property-related challenges, and significant gaps in coordination and service delivery. Particular attention will be given to collective centers, informal settlements, host communities, and locations with limited humanitarian presence and operational constraints.

The ESNFI response will focus on:

- ▶ Repair and rehabilitation of shelters in IDP sites, focusing on the most damaged shelters and collective centers.
- ▶ Provision of shelters for those living in inadequate living conditions, particularly those in informal settlements.
- ▶ Distribution of ESNFI and NFI kits for newly displaced households and vulnerable populations lacking essential household items.
- ▶ Rental support focusing on areas with high concentrations of IDPs within host communities.
- ▶ Mapping resources and response capacities in preparation for the upcoming rainy season.
- ▶ Strengthening localized responses through engagement of national NGOs and last mile delivery support.

The response will also strengthen HLP mainstreaming and coordination, including monitoring eviction risks, land-related challenges, and protection concerns affecting displaced and returning populations. Particular attention will be given to locations where return responses are ongoing or planned, to ensure that shelter support is complemented by the necessary HLP considerations and support.

The CCCM response will focus on strengthening site-level coordination, service monitoring, referral pathways, community participation, and information sharing in displacement sites with significant coordination and protection concerns. The cluster will also prioritize the rehabilitation of communal facilities and shelters in overcrowded, deteriorating sites, while strengthening community self-governance structures and accountability mechanisms.

In addition, the CCCM Cluster, in coordination with zonal and regional authorities, plans to conduct site profiling and site-level assessments in the IDP sites targeted for 2026 to strengthen evidence-based planning, service monitoring, and response prioritization.

The ESNFI Cluster aims to reach approximately 294,126 displacement-affected people across 66 prioritized woredas and requires at least USD 12.1 million to support emergency shelter and NFI responses. Through the CCCM response, the cluster plans to reach approximately 360,704 IDPs and requires USD 4.1 million to support site-level coordination, service monitoring, communal facility rehabilitation, and community engagement activities in prioritized sites. To strengthen HLP mainstreaming, coordination, monitoring, and response support in prioritized locations, an additional USD 1,864,287 million is required.

The ES/NFI Common Pipeline will remain central to the response strategy to ensure timely access to quality assured shelter assistance and harmonized support across prioritized locations. **Partners are encouraged to coordinate closely with sub national ESNFI and CCCM coordination structures and align interventions with the latest prioritization guidance.**

To ensure the effective use of limited resources, all partners are strongly encouraged to coordinate closely with sub-national ES/NFI Clusters and align interventions with the latest prioritization guidance.

Geographic Priorities and Response Focus

“ Amhara, Afar, and Tigray continue to host most Priority 1 and 2 areas, reflecting acute shelter needs and strained living conditions.

”

Afar, Amahara, and Tigray

Afar, Contested areas, Amhara, and Tigray continue to represent the highest concentration of shelter, NFI, CCCM, and HLP related needs, driven by prolonged displacement, overcrowded collective centers, new displacement, environmental exposure, limited durable solutions, and ongoing protection concerns. These regions account for the majority of Priority 1 locations under both the ESNFI and CCCM responses.

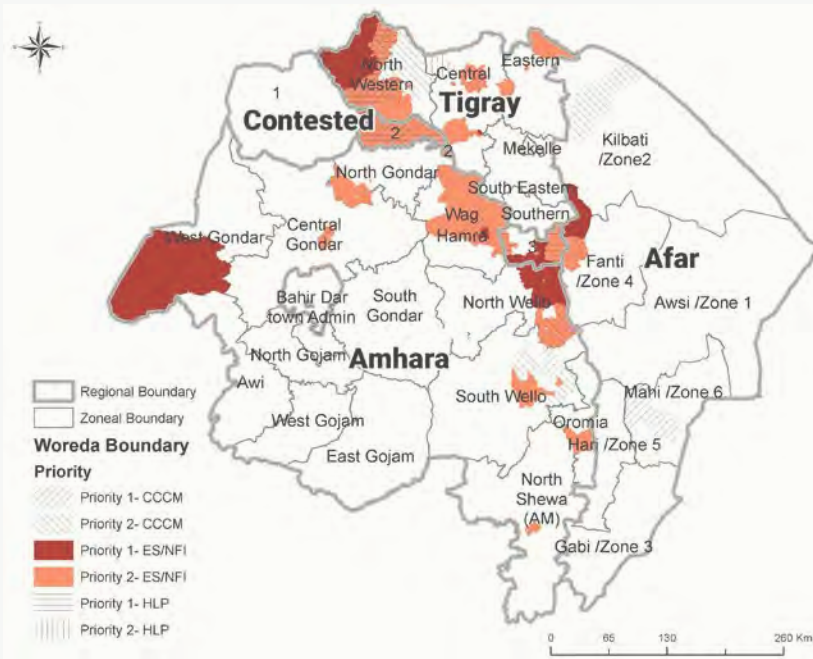
In the 2nd Round prioritization, several Priority 1 woredas and sites remain concentrated in Northwestern and Central Tigray. In Afar, Megale remains Priority 1, while Yalo continues to face significant humanitarian needs linked to prolonged displacement and harsh environmental conditions.

In Amhara, Priority 1 locations, including Raya Kobo, Quara, and Sekota town, are largely linked to new displacement and continued insecurity, resulting in increasing shelter, NFI, and coordination needs.

HLP-related concerns continue to be reported across several locations in Contested 1 and 2, while the decongestion process in Debre Berhan also continues to face land-related challenges affecting shelter interventions and relocation planning.

Across these regions, the response will focus on shelter rehabilitation in collective centers and IDP sites, emergency shelter and NFI assistance, rental support, HLP mainstreaming, rehabilitation of communal facilities, site coordination, and preparedness for flooding and climate-related shocks.

Priority Locations



Tigray

ESNFI Cluster



R2 Target
110k



Urgent Requirement
\$5.6M

CCCM Cluster



R2 Target
191k



Urgent Requirement
\$2.4M

HLP



R2 Target
126k

Amhara

ESNFI Cluster



R2 Target
25k



Urgent Requirement
\$1.2M

CCCM Cluster



R2 Target
68k



Urgent Requirement
\$0.3M

Afar

ESNFI Cluster



R2 Target
49k



Urgent Requirement
\$1.4M

CCCM Cluster



R2 Target
60k



Urgent Requirement
\$0.4M

Recommended Activities

ESNFI Cluster

Integrated Shelter and Essential NFI Kit (Amhara and Tigray Collective Centers and IDP sites)
Rental Support (Amhara, Contested and Tigray)
Afar Shelter Kit & NFI

CCCM Cluster

Coordination and Information Management
Community Participation and Self-Governance
Site Development and Site Improvement

HLP

Direct support & legal aid, Documentation & prevention and Capacity building

Benishangul, Oromia and Somali

“ In Benishangul Gumuz, Oromia, Gambella, and Somali, priority woredas highlight ongoing humanitarian pressures linked to insecurity, environmental shocks, and limited operational presence. ”

Priority woredas in Benishangul Gumuz, Gambella, Oromia, and Somali continue to face overlapping humanitarian challenges linked to localized insecurity, displacement, environmental shocks, limited response coverage, and gaps in site-level coordination and service delivery. Shelter conditions remain inadequate in several locations, particularly in informal settlements, collective centers, and host community settings, while some locations also continue to face HLP-related concerns linked to displacement, land access, return dynamics, and protection concerns.

For Shelter/NFI, the 2nd Round prioritization identified 3 Priority 1 woredas in Benishangul Gumuz and 6 in Oromia, while in the Somali region all prioritized locations fall under Priority 2 and 3. Under the HLP prioritization, two woredas in Benishangul Gumuz were also identified as Priority 1 due to land and displacement-related concerns. Across several prioritized locations, the absence of CCCM partners continues to affect site-level coordination, service monitoring, referral mechanisms, and community engagement.

Compared to the 1st Round prioritization, 17 Priority 1 woredas were either downgraded to Priority 2 and 3 or categorized as non-priority following ongoing responses, improved coverage, and population movements. Similarly, 30 Priority 2 woredas were deprioritized due to response coverage and/or return movements. At the same time, 3 Priority 2 woredas were upgraded to Priority 1 following new displacement and increasing humanitarian needs in West Guji and May Tsebrii town.

Priority Locations

Benishangul-Gumuz

ESNFI Cluster



R2 Target
4k



Urgent Requirement \$235k

CCCM Cluster



R2 Target
16k



Urgent Requirement \$0.1M

HLP



R2 Target
16k

Somali

ESNFI Cluster



R2 Target
55k



Urgent Requirement \$1.6M

CCCM Cluster



R2 Target
41k



Urgent Requirement \$0.7M

HLP



R2 Target
148k

Oromia

ESNFI Cluster



R2 Target
46k



Urgent Requirement \$1.8M

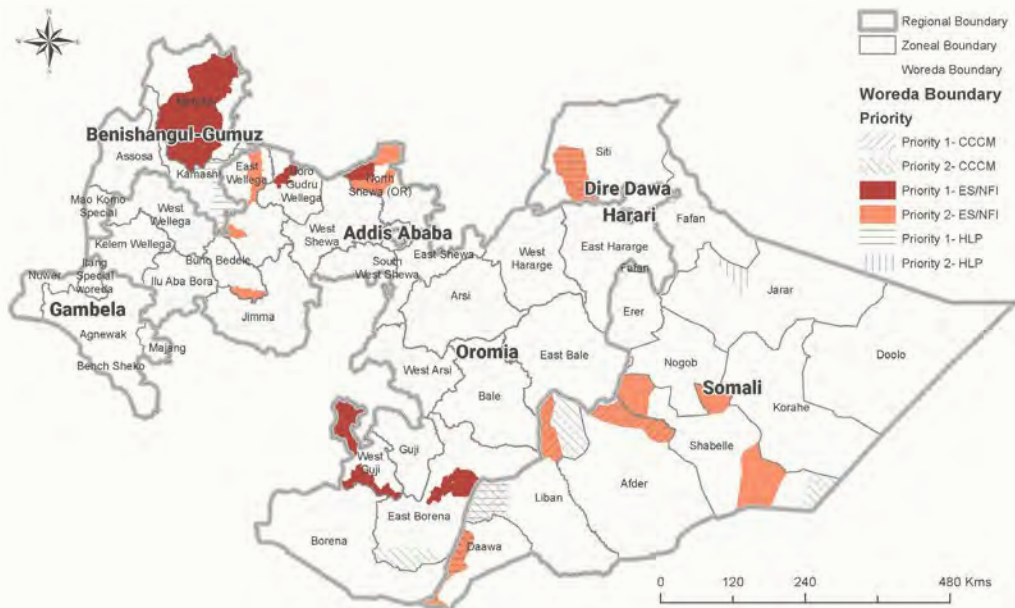
CCCM Cluster



R2 Target
98k



Urgent Requirement \$0.2M



Recommended Activities

ESNFI Cluster

Rental Support
(East Wellega, Noth Shewa(OR), and Benishangul)
Shelter Repair Kits-Full or Partial
Mobility Adapted and Flood ESNFI kit

CCCM Cluster

Coordination and Information Management
Community Participation and Self-Governance
Site Development and Site Improvement

HLP

Direct support & legal aid, Documentation & prevention and Capacity building



@ Ethiopia ES/NFI Cluster

Contingency Plan

“ Flooding remains a major climate threat in Ethiopia, driving displacement and increasing humanitarian needs amid limited response capacity. ”

Flood Risk Overview

Flooding remains one of the most severe consequences of climate change in Ethiopia, resulting in displacement, destruction of shelters, loss of livelihoods, and disruption of basic services. Ethiopia’s vulnerability is further highlighted by the INFORM Risk Index, which rates the country with a high Climate Driven Risk Indicator of 5.8 and a Vulnerability Index of 7.1, reflecting limited capacity to cope with and recover from climate-related shocks. In recent years, the frequency, intensity, and geographical spread of flooding have continued to increase, resulting in growing humanitarian needs and operational pressures across multiple regions.

Preparedness and Response Measures

Considering the upcoming Kiremt season, the cluster is mapping flood-prone locations, potential displacement hotspots, and available response capacities to strengthen preparedness planning and rapid response readiness in areas that may be affected by flooding. Under the CCCM response, 67 IDP sites exposed to flooding and strong winds during the Kiremt season have also been identified to support contingency planning and preparedness measures.

The map below highlights flood-prone areas, displacement hotspots, prioritized IDP sites, and available response capacities identified through the preparedness mapping exercise.





@ Ethiopia ES/NFI Cluster

ANNEX

Ethiopia ES/NFI Cluster 2nd Round Prioritization 2026

ES/NFI Cluster Priority 1 Woredas

Region	Zone	Woreda	2026 Target	R2 Priority Level
Tigray	North Western	Tahtay Adiyabo	40,967	Priority-1
Tigray	North Western	Sheraro town	42,262	Priority-1
Tigray	North Western	Endabaguna town	4,278	Priority-1
Tigray	Central	Abiy Adi town	22,929	Priority-1
Tigray	Eastern	Zala Anbesa town	17,839	Priority-1
Afar	Kilbati /Zone2	Megale	17,154	Priority-1
Amhara	North Wello	Raya Kobo	12,878	Priority-1
Amhara	West Gondar	Quara	14,700	Priority-1
Amhara	Wag Hamra	Sekota town	1,322	Priority-1
Oromia	North Shewa (OR)	Wara Jarso	2,859	Priority-1
Oromia	West Guji	Abaya	8,852	Priority-1
Oromia	West Guji	Dugda Dawa	10,925	Priority-1
Oromia	West Guji	Gelana (West Guji)	7,110	Priority-1
Oromia	Horo Gudru Wellega	Jarte Jardega	6,441	Priority-1
Oromia	East Borena	Liben	6,870	Priority-1
Benishangul-Gumuz	Metekel	Dangur	5,820	Priority-1
Benishangul-Gumuz	Metekel	Wembera	3,561	Priority-1
Benishangul-Gumuz	Metekel	Bulen	2,310	Priority-1
Contested	2	May Tsebri town	1,755	Priority-1
Contested	3	Raya Alamata	672	Priority-1

ES/NFI Cluster Priority 2 Woredas

Region	Zone	Woreda	2026 Target	R2 2026 Priority
Tigray	North Western	Asgede	38,304	Priority-2
Tigray	North Western	Shire Endaslasie town	75,872	Priority-2
Tigray	North Western	Maekel Adiyabo	3,695	Priority-2
Tigray	North Western	Tsimbla	700	Priority-2
Tigray	Central	Adwa	28,226	Priority-2
Tigray	Central	Kola Tembien	1,049	Priority-2
Tigray	Central	Axum town	28,104	Priority-2
Tigray	Central	Emba Sieneti	1,241	Priority-2
Tigray	Eastern	Erob	2,061	Priority-2
Tigray	Eastern	Adigrat town	9,275	Priority-2
Tigray	Mekelle	Adihaki Sub City	3,668	Priority-2
Afar	Fanti /Zone 4	Yalo	35,975	Priority-2
Amhara	North Shewa (AM)	Debre Berhan town	24,948	Priority-2
Amhara	Wag Hamra	Abergele (AM)	1,540	Priority-2
Amhara	North Gondar	Dabat	2,613	Priority-2
Amhara	North Wello	Kobo town	24,468	Priority-2
Amhara	North Shewa (AM)	Shoa Robit	1,251	Priority-2
Amhara	Wag Hamra	Tsagbeji	1,700	Priority-2
Amhara	Oromia	Artuma Fursi	9,270	Priority-2
Amhara	North Gondar	Debark town	588	Priority-2
Amhara	South Wello	Dessie Zuria	758	Priority-2
Amhara	Central Gondar	Gondar town	2,152	Priority-2
Amhara	North Wello	Habru	10,491	Priority-2
Amhara	Wag Hamra	Sekota	755	Priority-2
Amhara	North Wello	Woldiya town	253	Priority-2
Amhara	Wag Hamra	Zequala	875	Priority-2
Oromia	East Wellega	Gida Ayana	2,885	Priority-2
Oromia	East Wellega	Diga	2,666	Priority-2
Oromia	North Shewa (OR)	Dera (OR)	904	Priority-2
Oromia	North Shewa (OR)	Kuyu	1,517	Priority-2
Oromia	North Shewa (OR)	Degem	8,245	Priority-2
Oromia	Buno Bedele	Dedesa	6,323	Priority-2
Somali	Siti	Erer (SM)	24,655	Priority-2
Somali	Shabelle	Danan	3,025	Priority-2
Somali	Shabelle	Kelafo	4,653	Priority-2
Somali	Liban	Guradamole	11,726	Priority-2
Somali	Shabelle	East Imi	2,035	Priority-2
Somali	Daawa	Hudet	44,935	Priority-2
Somali	Daawa	Moyale (SM)	53,684	Priority-2
Somali	Afder	West Imi	6,733	Priority-2
Contested	2	Tselemti/ West Telemt	1,170	Priority-2
Contested	2	Lelay Tselemti/ Dima	931	Priority-2
Contested	3	Korem town	611	Priority-2
Contested	3	Alamata town	1,215	Priority-2
Contested	3	Zata	154	Priority-2
Contested	3	Chercher	6,510	Priority-2

Ethiopia CCCM Cluster 2nd Round Prioritization 2026

CCCM Cluster Priority 1 Woredas

Region	Zone	Woreda	Site name	Settlement/site type	R2 Priority Level	
Tigray	Eastern	Adigrat town	Commission	Collective center	Priority-1	
Tigray	Central		Meles Zenawi Preparatory School		Priority-1	
Tigray	Central		Edaga Rebue		Priority-1	
Tigray	Eastern		Agazi Primary School		Priority-1	
Tigray	Eastern		Meda Agame primary School		Priority-1	
Tigray	North Western	Asgede	Mayhanse Elementary school		Priority-1	
Tigray	Central	Abiy Adi town	Abiyadi TVET College		Priority-1	
Tigray	Central		Sur construction camp		Priority-1	
Tigray	Central		Manufacturing shade		Priority-1	
Tigray	Central		Animal Shade		Priority-1	
Tigray	Central		Lisanu Elementary School		Priority-1	
Tigray	Central		Kola Temben Nebar Mimhdar		Priority-1	
Tigray	Central	Adwa	Nigste Saba Secondary school		Priority-1	
Afar	Kilbati /Zone2	Megale	Horodle Eab		pontaneous camp/site	Priority-1
Afar	Kilbati /Zone2		Dirma			Priority-1
Afar	Kilbati /Zone2		Tonsa Amogina	Priority-1		
Afar	Kilbati /Zone2		Aliya Daba	Priority-1		
Afar	Fanti /Zone 4	Yalo	Kadabura		Priority-1	
Afar	Fanti /Zone 4		Sinduhun damum		Priority-1	
Afar	Fanti /Zone 4		Haridora		Priority-1	
Afar			Wakriede		Priority-1	
Afar	Mahi /Zone 6	Yangudi	Dale Boda	Spontaneous camp/site	Priority-1	
Afar	Mahi /Zone 6		Zone Mekribet	Collective center	Priority-1	
Afar	Mahi /Zone 6		Seka'ela	Spontaneous camp/site	Priority-1	
Afar	Mahi /Zone 6		Roto		Priority-1	
Amhara	Wag Hamra	Sekota	Hamusit Kebele		Priority-1	
Amhara	South Wello	Thehulederie	Jari Kutir 2	Spontaneous camp/site	Priority-1	
Amhara	Wag Hamra	Sekota Town	Sekota Town		Priority-1	
Contested	2	May Tsebri town	Road construction enterprise	Collective center	Priority-1	
Contested	2		Adi Harush Refugee Camp	Planned camp/site	Priority-1	
Contested	2	Tselemti/ West Telemt	May Aini Refugee Camp	Planned camp/site	Priority-1	
Somali	Liban	Guradamole	Abdi balay	Spontaneous camp/site	Priority-1	
Somali	Liban		Towfiiq		Priority-1	
Somali	Liban		Lanjano		Priority-1	
Somali	Liban		Kuranjo		Priority-1	
Tigray	Mekelle	Hadnet Sub City	Hadnet General Secondary School		Priority-1	
Tigray	North Western	Shire Endaslasie town	Model Kindergarden		Priority-1	
Tigray	Central	Adwa	Enda Tsion	Collective center	Priority-1	
Tigray	Central		Wekma Elementary school		Priority-1	
Tigray	Central		Korea Secondary school		Priority-1	
Tigray	Central		Ngste Saba No 2 Elementary school		Priority-1	
Tigray	Central		Adwa Industrial Zone		Planned camp/site	Priority-1

Ethiopia CCCM Cluster 2nd Round Prioritization 2026

CCCM Cluster Priority 1 Woredas

Region	Zone	Woreda	Site name	Settlement/site type	R2 Priority Level
Tigray	Central	Axum town	Abreha We'atsbha Elementary School	Collective center	Priority-1
Tigray	Central		Araya Kahsu Health Science College		Priority-1
Tigray	Central		Aksum Preparatory school		Priority-1
Tigray	Central		Kaleb Secondary School		Priority-1
Tigray	North Western	Shire Endaslasie town	BGI Elementary School		Priority-1
Tigray	North Western		Guna Poultry farm		Priority-1
Tigray	Mekelle	Adihaki Sub City	Sabacare	Planned camp/site	Priority-1
Tigray	Central	Axum town	Laelay Maychew Security Office	Collective center	Priority-1
Tigray	Central		Laelay Maychew Water Supply Office		Priority-1
Tigray	Central		Drug warehouse		Priority-1
Tigray	Central		Kidus Yared Rehabilitation Center		Priority-1
Tigray	Central		Laelay Machew Health Office		Priority-1
Tigray	Central		Adolis Market Center	Planned camp/site	Priority-1
Afar	Mahi /Zone 6	Yangudi	Maramia Gibi	Collective center	Priority-1
Afar	Mahi /Zone 6		Sagale	Spontaneous camp/site	Priority-1
Afar	Mahi /Zone 6		Kalalu		Priority-1
Afar	Mahi /Zone 6		Yangudi Rasa		Priority-1
Somali	Afder	West Imi	Koleley		Priority-1
Amhara	North Wello	Kobo town	TVT College	Collective center	Priority-1
Contested	2	May Tsebri town	Daero	Collective center	Priority-1
Tigray	North Western	Tahtay Adiyabo	Adi Abay	Planned camp/site	Priority-1
Tigray	North Western		Mukanegarit		Priority-1
Tigray	North Western		May-kuhli	Collective Centers	Priority-1
Tigray	North Western		Shimblina		Priority-1
Contested	2	May Tsebri town	Awra-Godena		Priority-1

CCCM Cluster Priority 2 Woredas

Site Name	Region	Zone	Woreda	Settlement/site type	Number of IDP Individuals	Priority
Hawelti Secondary School	Tigray	Mekelle	Qedamay Weyane Sub City	Collective center	630	Priority-2
Kambo	Tigray	North Western	Adi Daero	Planned camp/site	1,081	Priority-2
Hitsatse Refugee Camp	Tigray	North Western	Asgede	Planned camp/site	6,621	Priority-2
Adi Mahameday Full Elementary School	Tigray	North Western	Asgede	Collective center	2,253	Priority-2
Mekayho	Tigray	North Western	Asgede	Planned camp/site	124	Priority-2
Degadugugni	Tigray	North Western	Asgede	Planned camp/site	117	Priority-2
Endabaguna Screening center 1	Tigray	North Western	Endabaguna town	Collective center	277	Priority-2
Endabaguna Screening center 2	Tigray	North Western	Endabaguna town	Collective center	135	Priority-2
Endabaguna Reception Center	Tigray	North Western	Endabaguna town	Collective center	2,776	Priority-2
Selekleka (farmers training center)	Tigray	North Western	Laelay Koraro	Collective center	3,730	Priority-2
Sur camp	Tigray	North Western	Maekel Adiyabo	Planned camp/site	517	Priority-2
Adi kahsu Farmers training centres	Tigray	North Western	Seyemti Adiyabo	Collective center	889	Priority-2

CCCM Cluster Priority 2 Woredas

Site Name	Region	Zone	Woreda	Settlement/site type	Number of IDP Individuals	Priority
Sheraro TVET	Tigray	North Western	Sheraro town	Collective center	632	Priority-2
Sheraro Secondary School	Tigray	North Western	Sheraro town	Collective center	984	Priority-2
Sheraro Shede 1	Tigray	North Western	Sheraro town	Collective center	519	Priority-2
Semaetat Elementary School	Tigray	North Western	Sheraro town	Collective center	1,797	Priority-2
Gurfa	Afar	Kilbati /Zone2	Berahile	Spontaneous camp/site	607	Priority-2
Bakielo	Amhara	North Shewa (AM)	Debre Berhan town	Planned camp/site	4,968	Priority-2
CHINA CAMP	Amhara	South Wello	Kalu	Collective center	1,879	Priority-2
CHINA CAMP	Amhara	North Shewa (AM)	Debre Berhan town	Planned camp/site	10,447	Priority-2
Debat	Amhara	South Wello	Mekane Selam town	Collective center	120	Priority-2
Jara Camp	Amhara	North Wello	Habru	Planned camp/site	10,671	Priority-2
Jari	Amhara	South Wello	Thehulederie	Collective center	1,434	Priority-2
Kutaber Camp	Amhara	South Wello	Kutaber	Collective center	649	Priority-2
Legemara Camp	Amhara	South Wello	Mekane Selam town	Collective center	694	Priority-2
Ara Gudud	Somali	Liban	Deka Suftu	Spontaneous camp/site	372	Priority-2
Bar Gunway	Somali	Liban	Deka Suftu	Spontaneous camp/site	267	Priority-2
Ber Ano	Somali	Liban	Deka Suftu	Spontaneous camp/site	263	Priority-2
Bur Anbar	Somali	Liban	Deka Suftu	Spontaneous camp/site	391	Priority-2
Far Malab	Somali	Liban	Deka Suftu	Spontaneous camp/site	360	Priority-2
Galol Dhere	Somali	Liban	Deka Suftu	Spontaneous camp/site	445	Priority-2
Han taraka	Somali	Liban	Deka Suftu	Spontaneous camp/site	225	Priority-2
Hungul	Somali	Liban	Deka Suftu	Spontaneous camp/site	646	Priority-2
Masajid	Somali	Liban	Deka Suftu	Spontaneous camp/site	317	Priority-2
Towfiq	Somali	Liban	Deka Suftu	Spontaneous camp/site	1,934	Priority-2
Tuwer	Somali	Liban	Deka Suftu	Spontaneous camp/site	298	Priority-2
Warbib	Somali	Liban	Deka Suftu	Spontaneous camp/site	234	Priority-2
Laqashe	Somali	Shabelle	Ferfer	Spontaneous camp/site	354	Priority-2
Baqasa	Somali	Liban	Goro Baqaqsa	Spontaneous camp/site	3,714	Priority-2
Haloye	Somali	Daawa	Hudet		4,608	Priority-2
Midre Genet Elders Care Center	Tigray	Mekelle	Qedamay Weyane Sub City	Collective center	332	Priority-2
Mekelle Health Center	Tigray	Mekelle	Qedamay Weyane Sub City	Collective center	559	Priority-2
Hop Temezabelti Maekel	Tigray	Mekelle	Hadnet Sub City	Collective center	1,794	Priority-2
Alene Secondary school	Tigray	Mekelle	Semen Sub City	Collective center	978	Priority-2
Lekatit 23 Secondary School	Tigray	Mekelle	Ayder Sub City	Collective center	1,496	Priority-2
Adiha Secondary School	Tigray	Mekelle	Ayder Sub City	Collective center	1,395	Priority-2
Adihaki secondary school	Tigray	Mekelle	Adihaki Sub City	Collective center	2,918	Priority-2
Gobata	Tigray	Mekelle	Kuiha Sub City	Collective center	716	Priority-2
Adhawsa Primary School	Tigray	Mekelle	Adihaki Sub City	Collective center	2,581	Priority-2
Sewhi Nigus primary school	Tigray	Mekelle	Semen Sub City	Collective center	609	Priority-2
Sheraro Jeafer ABA	Tigray	North Western	Sheraro Town		51	Priority-2
Shade Metal Work	Tigray	North Western	Sheraro town		5,508	Priority-2
Shire Preparatory School	Tigray	North Western	Shire Endaslasie town	Collective center	2,710	Priority-2
Embadanso Elementary school	Tigray	North Western	Shire Endaslasie town	Collective center	6,746	Priority-2
Fre Swuat Secondary school	Tigray	North Western	Shire Endaslasie town	Collective center	6,883	Priority-2
Shire General Secondary School	Tigray	North Western	Shire Endaslasie town	Collective center	6,027	Priority-2

CCCM Cluster Priority 2 Woredas

Site Name	Region	Zone	Woreda	Settlement/site type	Number of IDP Individuals	Priority
Hibret Elementary School	Tigray	North Western	Shire Endaslasie town	Collective center	3,761	Priority-2
Tsehaye Elementary school	Tigray	North Western	Shire Endaslasie town	Collective center	8,807	Priority-2
ARRA Zuria	Tigray	North Western	Shire Endaslasie town	Collective center	717	Priority-2
Dehab Tesfay Women's Training Center	Tigray	North Western	Shire Endaslasie town	Collective center	755	Priority-2
Wukar Dba Elementary School	Tigray	North Western	Shire Endaslasie town	Collective center	995	Priority-2
Shire Agricultural College	Tigray	North Western	Shire Endaslasie town	Collective center	1,918	Priority-2
Midregenet Secondary School	Tigray	North Western	Shire Endaslasie town	Collective center	1,418	Priority-2
Edaga Hamus Comprehensive Secondary School	Tigray	Eastern	Edaga Hamus town	Collective center	191	Priority-2
Old Airport	Tigray	Eastern	Adigrat town	Planned camp/site	2,242	Priority-2
Taba Weyane Elementary school	Tigray	North Western	Shire Endaslasie town	Collective center	6,473	Priority-2
Adi Wenfito Elementary school	Tigray	North Western	Shire Endaslasie town	Collective center	1,071	Priority-2
Hudet 01	Somali	Daawa	Hudet		2,856	Priority-2
Borbor Primary School	Oromia	East Borena	Dhas		18,894	Priority-2
Haro Daye	Oromia	East Borena	Dhas		12,162	Priority-2
Tumtu	Oromia	East Borena	Dhas		15,477	Priority-2
03 Kebele	Somali	Erer	Meyumuluka	Spontaneous camp/site	300	Priority-2
Five Angels	Tigray	North Western	Shire Endaslasie town	Planned camp/site	6,976	Priority-2
Adi Kentibay	Tigray	North Western	Shire Endaslasie town		10,935	Priority-2
Weyinshet Fabrica	Amhara	North Shewa (AM)	Debre Berhan town	Planned camp/site	6,523	Priority-2
May Dmu	Tigray	North Western	Tahtay Koraro	Planned camp/site	6,642	Priority-2



www.sheltercluster.org
<https://www.cccmcluster.org/where-we-work/ethiopia>
[www. EthiopiaESNFIClusterResources.com](http://www.EthiopiaESNFIClusterResources.com)