

UNOSAT DAMAGE ASSESSMENT TO CROPLAND AREAS – GAZA STRIP



UNOSAT conducted a satellite imagery-based damage assessments to cropland in the Gaza Strip, Occupied Palestinian Territory, using Sentinel-2 imagery from 2018 to 2025. UNOSAT and FAO analysis shows that the agricultural extent in the Gaza Strip is estimated to be 150 sq. km, accounting for approximately 41% of the total area of Gaza, following an extensive land-cover analysis. Compared to the average of the previous six years, approximately 86% amounting for approximately 130 square kilometres of the orchards and other trees, field crops and vegetables in the Gaza Strip exhibited a significant decline in health and density in July 2025.

Map of Damaged Agricultural Land – July 2025

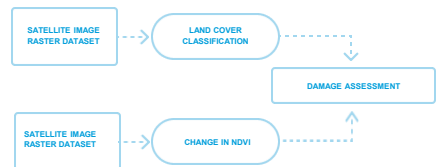


Key numbers



Methodology

UNOSAT carried out a multi-temporal land cover classification using Sentinel-2 imagery spanning from October 2022 to September 2023 in order to identify agricultural land in the Gaza Strip. UNOSAT conducts change detection analysis using Sentinel-2 satellite imagery from 2017 to 2025. This analysis involves performing a Normalised Difference Vegetation Index (NDVI) analysis to identify substantial declines in NDVI. The decline in the health and density of the crops can be observed due to the impact of activities such as razing, heavy vehicle activity, bombing, shelling, and other conflict-related dynamics. The analysis includes damage assessment for orchards and other trees, field crops and vegetables.



Damaged Agricultural Lands out of Total per Governorate

