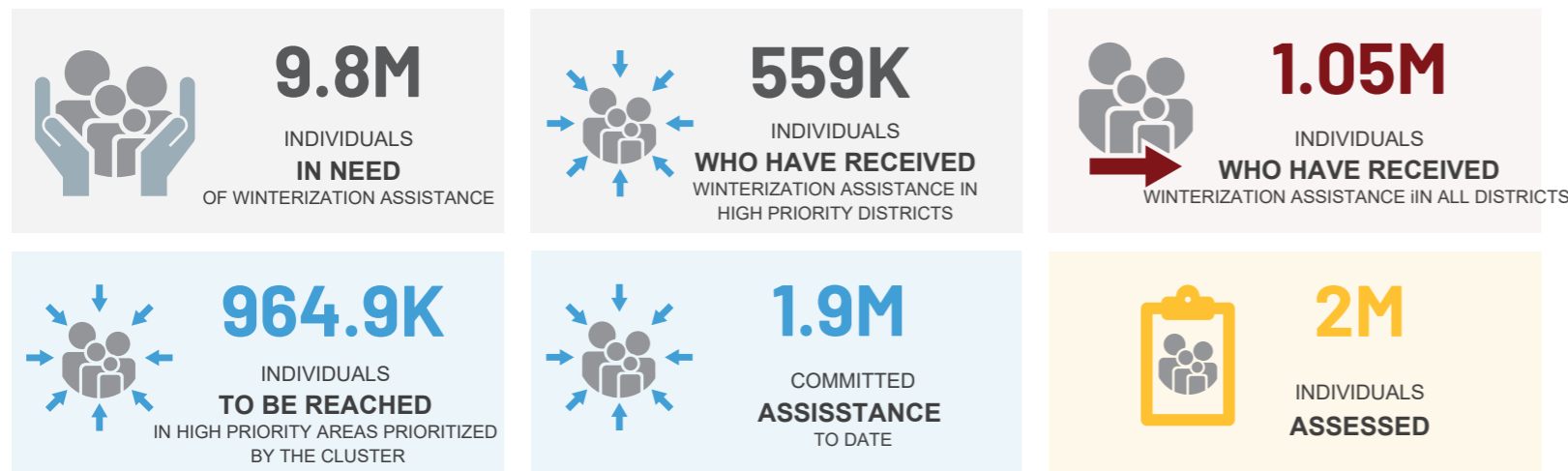
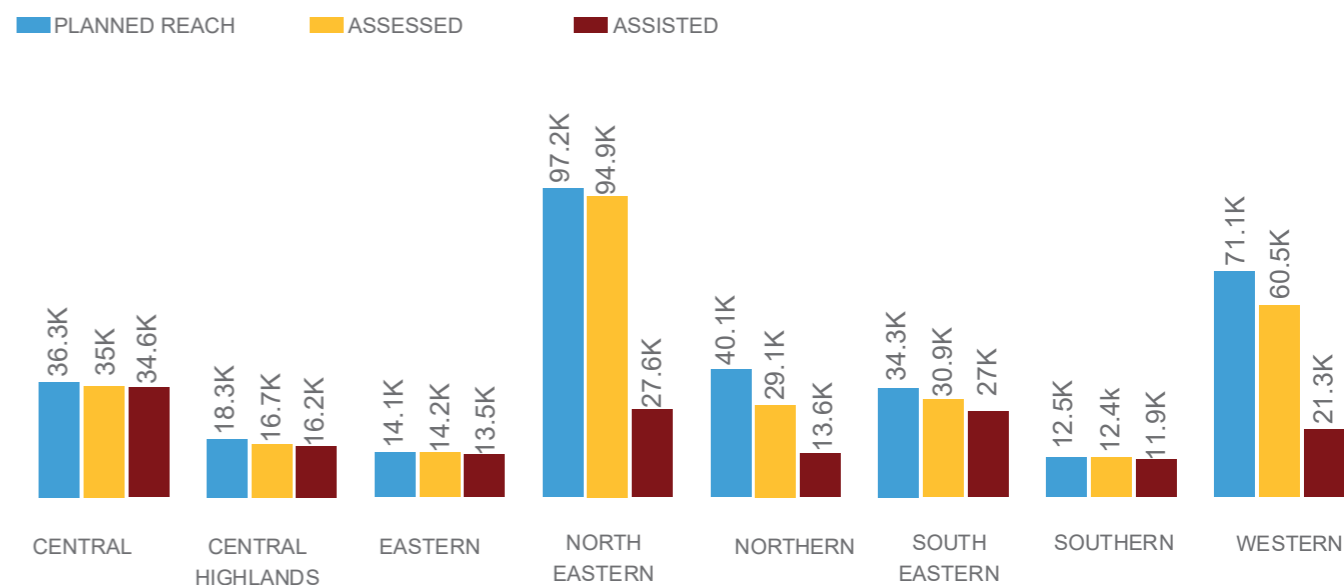


HIGHLIGHTS

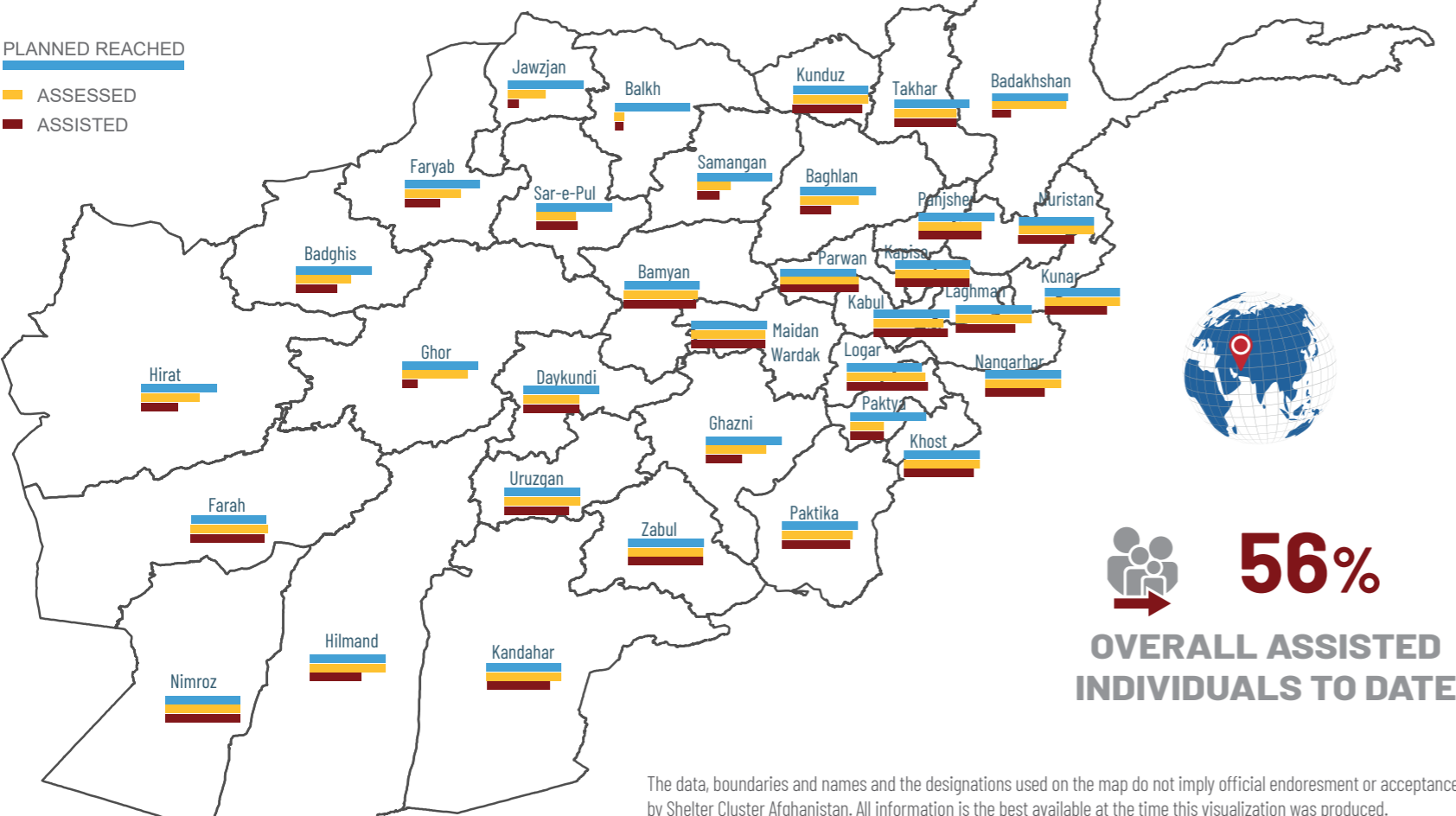
The Emergency Shelter and Non-Food Items (ES/NFI) Cluster, in collaboration with the National authorities are providing targeted winterization assistance to IDPs, returnees and acutely vulnerable people across the country in effort to save lives and mitigate vulnerabilities associated with the winter season. Over 15 partners are involved in the winterization response across the country, all prioritizing a range of solutions including provision of fuel and heaters, winter clothing, blankets, shelter repair and rental support.



PROGRESS BY REGION (in households)



PROGRESS BY PROVINCE (in households)



ASSISTED HOUSEHOLDS BY ACTIVITY

WINTERIZATION ASSISTANCE	PLANNED REACHED	ASSISTED
STANDARD PACKAGE FOR HEATERS/FUEL	268.9K	149.9K
WINTER CLOTHING PACKAGE	177.2K	108.4K
BLANKETS & QUILTS PACKAGE	109.9K	86.8K
SHELTER REPAIR/TOOLKITS/ SEALING-OFF KITS	1.3K	1.0k
CASH FOR RENT	8.7K	7K

44
IMPLEMENTING AGENCIES