

# El Salvador

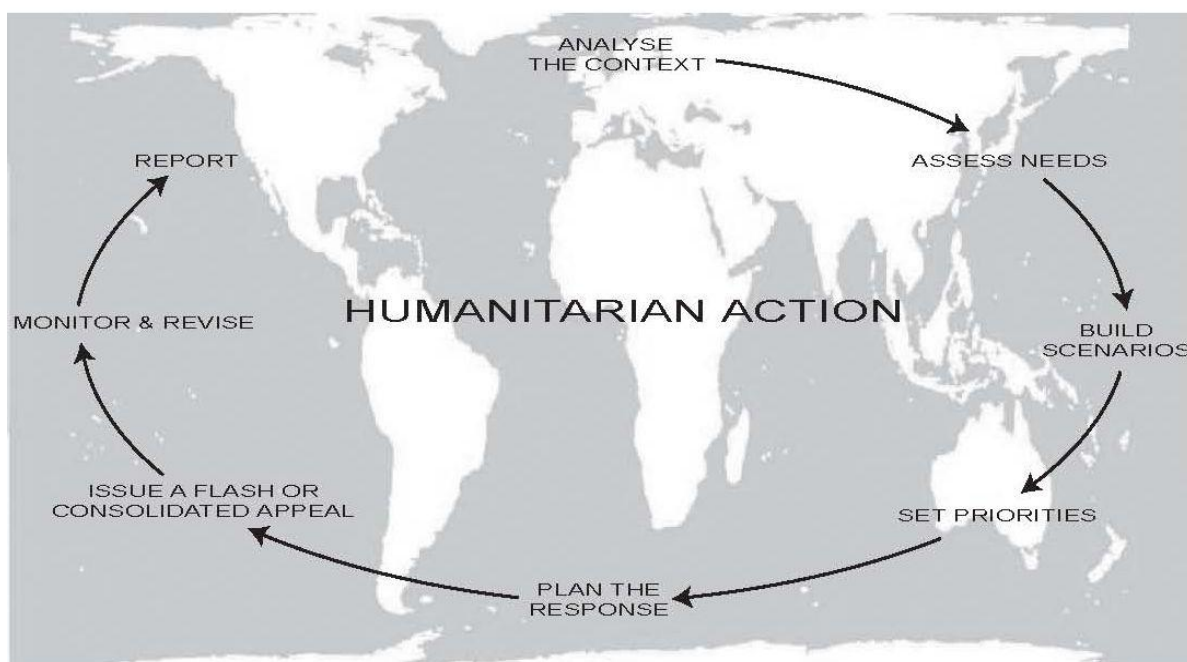


2011

FLASH APPEAL



## Consolidated Appeals Process (CAP) Aid agencies working together to:



<http://www.humanitarianappeal.net>

### SAMPLE OF ORGANIZATIONS PARTICIPATING IN THE FLASH APPEALS

ACF	Fundación Seraphim	MACCA	UNAIDS
ACTED	Handicap International	Medair	UNDP
ADRA	HELP	NPA	UNESCO
AVSI	IMC	NRC	UNFPA
CARE	INTERSOS	OCHA	UN-HABITAT
CARITAS	IOM	OHCHR	UNHCR
CRS	IRC	Oxfam America Première	UNICEF
CWS	IRIN	PAHO (WHO)	WFP
DRC	Islamic Relief Worldwide	Save the Children	WHO
FAO	LWF	Solidarités	World Vision International

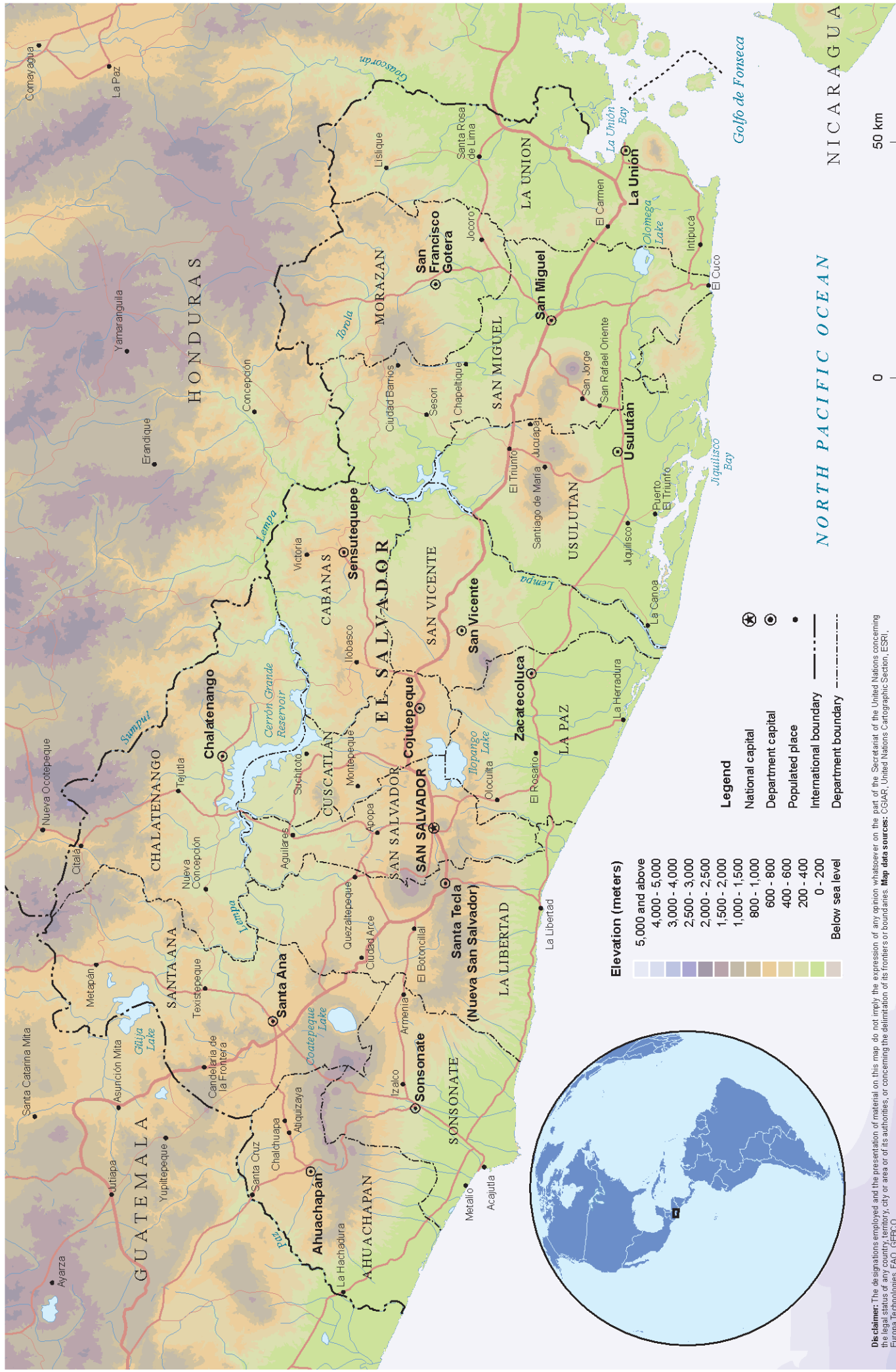
# TABLE OF CONTENTS

---

<b>1.</b>	<b>EXECUTIVE SUMMARY .....</b>	<b>1</b>
	TABLE I: SUMMARY OF REQUIREMENTS GROUPED BY CLUSTER .....	3
	TABLE II: SUMMARY OF REQUIREMENTS GROUPED BY APPEALING ORGANIZATION.....	3
<b>2.</b>	<b>CONTEXT AND HUMANITARIAN CONSEQUENCES .....</b>	<b>4</b>
2.1	CONTEXT AND RESPONSE TO DATE .....	4
2.2	HUMANITARIAN CONSEQUENCES AND NEEDS ANALYSIS .....	6
	1. <i>Agriculture</i> .....	6
	2. <i>Collective Centres Coordination and Management</i> .....	7
	3. <i>Education</i> .....	8
	4. <i>Food Assistance</i> .....	8
	5. <i>Health</i> .....	9
	6. <i>Protection</i> .....	9
	7. <i>Water and Sanitation</i> .....	10
2.3	SCENARIOS .....	11
<b>3.</b>	<b>RESPONSE PLANS .....</b>	<b>12</b>
3.1	STRATEGIC PRIORITIES FOR HUMANITARIAN RESPONSE.....	12
	3.2.1 <i>SHELTER</i> .....	14
	3.2.2. <i>WATER, SANITATION AND HEALTH (WASH)</i> .....	16
	3.2.3 <i>FOOD ASSISTANCE</i> .....	18
	3.2.4 <i>HEALTH</i> .....	20
	3.2.5 <i>AGRICULTURE</i> .....	22
	3.2.6 <i>EDUCATION</i> .....	24
	3.2.7 <i>PROTECTION AND SECURITY</i> .....	26
<b>4.</b>	<b>ROLES AND RESPONSIBILITIES.....</b>	<b>28</b>
<b>ANNEX I.</b>	<b>LIST OF PROJECTS .....</b>	<b>30</b>
<b>ANNEX II.</b>	<b>IFRC PRELIMINARY EMERGENCY APPEAL.....</b>	<b>33</b>
<b>ANNEX III.</b>	<b>ACRONYMS AND ABBREVIATIONS.....</b>	<b>42</b>

Please note that appeals are revised regularly. The latest version of this document is available on <http://www.humanitarianappeal.net>.

Full project details can be viewed, downloaded and printed from [www.reliefweb.int/fts](http://www.reliefweb.int/fts).



**Disclaimer:** The designations employed and the presentation of material on this map do not imply the expression of any opinion whatsoever on the part of the Secretariat of the United Nations concerning the legal status of any country, territory, city or area or its authorities, or concerning the delimitation of its frontiers or boundaries. **Map data sources:** CGIAR, United Nations Cartographic Section, ESRI, Europa Technologies, FAO, GEBCO.

## 1. EXECUTIVE SUMMARY

The arrival of Tropical Depression 12E in El Salvador on 10 October 2011 brought unprecedented heavy rainfall, accumulating more rain than Hurricane Mitch in 1998, and exceeds rain levels registered in the last 50 years.

The most impacted areas are especially along the coastline and the volcanic chain, in the east and centre of the country, which have historically been the most vulnerable to natural disasters. Due to the persistence of the storm, two low-pressure systems were generated, leading to torrential rains for more than ten days in El Salvador, causing severe flooding and landslides in most of the country's 14 departments. Of particular importance is the fact that the tropical depression remained almost stationary over the country for the majority of the duration of the phenomenon. This record-breaking rainfall levels caused all of the nation's dams to reach their maximum capacity levels, thus triggering a rise in the discharge volume to 9000 cubic meters per second, further flooding populated zones and crops downstream, similar to what occurred with the devastating Hurricane Mitch in 1998. Data from the Ministry of Environment and Natural Resources (MARN) show that the levels of rainfall over in the period between 10 and 18 October reached 1500 millimetres.

To date, 35 people have been reported dead, two reported missing, and some 55,976 people have been evacuated to 638 shelters in all 14 departments of the country. Estimated flooded homes total 20,000 at present, as well as 1,183 water wells. The affected population is estimated at 300,000 people. Infrastructure damage hampers access to affected areas as many roads are blocked by debris or isolated by flooding and landslides. There is particular concern to ensure active monitoring of the two principal volcanoes, due to possible mudslides and seismic movements in populated areas, including the capital.

Exposure to natural disasters in El Salvador is very high. Together with its exposure to a number of high impact natural threats (earthquakes, volcanic eruptions, storms, flooding, landslides, and drought), the socio-economic and physical vulnerability makes El Salvador one of the highest-risk countries in Latin America.

Due to the extent and magnitude of the impact, as well as the severe damage caused by rains in agricultural areas and infrastructure, El Salvador now faces one of the greatest disasters in its history. Fortunately, swift action taken by national, municipal and community based authorities, averted greater loss of life. Although the Salvadoran Government is responding quickly and effectively to the crisis, there are still significant humanitarian gaps in the response that this appeal seeks to fill. This Flash Appeal aims to solicit and mobilize from the international community additional and complementary support for the Government's effort in maintaining the basic standards of humanitarian aid to effectively target the most immediate humanitarian needs and most vulnerable sectors of the affected population, including children, women and families living in shelters who have suffered livelihood devastation. The Flash Appeal also aims to fill gaps in assistance targeted at isolated communities, which heretofore have received very little assistance.

Duration	October – April 2011
Affected population	300,000 people affected <ul style="list-style-type: none"> <li>• 55,976 in evacuation centres</li> </ul>
Areas targeted by Flash Appeal	Flood-affected regions along the coastline and the volcanic chain, the east and centre of the country
Key sectors for response	Shelter, Food Assistance WASH, Health, Agriculture, Education, Protection
Key target beneficiaries (approximate figures)	<ul style="list-style-type: none"> <li>• 118,078 for food</li> <li>• 300,000 for health</li> <li>• 15,000 for agriculture</li> <li>• 235,000 for ER</li> <li>• 223,191 for education</li> <li>• 24,379 for protection</li> </ul>
Total funding requested	Funding requested per beneficiary
<b>\$15,764,212</b>	<b>Approximately \$53</b>

Since the beginning of the disaster, a nationwide coordinated effort has been underway, with the participation of all humanitarian actors in the country, the support of international community and cooperation, and the active involvement of municipal-level communities, so as to ensure the most effective path from emergency relief to recovery and reconstruction. All projects presented in this Flash Appeal will maintain a coordinated approach, ensuring synergies and complementarities as well as economies of scale, with the active participation of all stakeholders.

With respect to the humanitarian response strategic priorities, the following areas of intervention have been identified as critical to help immediately reduce existing vulnerabilities and respond to prevailing emergency needs: i) Emergency Shelter, which includes collective centres management; ii) delivery of lifesaving water, sanitation and hygiene (WASH) services; iii) meeting immediate food needs of the population; and iv) ensuring access to life-saving primary and secondary health care services for the population affected by the floods and landslides, including psychosocial support, detection and prevention of outbreaks of communicable life threatening diseases.

The Flash Appeal also aims to provide focused and integral support to the affected population in ways that contribute to settling the foundation for sustainable recovery and reconstruction, which government authorities have already started to plan.

All actions outlined in the Flash Appeal will be carried out through well managed coordination between sectors and humanitarian actors, who will assume responsibility for the effective delivery of the humanitarian response. Based on available information, the Flash Appeal may be reviewed within a month to ensure its activities and strategies are in line with the evolving context.

In close coordination and complementary efforts with the Government of El Salvador, the international humanitarian community, including Non-Governmental Organizations (NGOs), the International Organization for Migration (IOM), and United Nations (UN) agencies, the Flash Appeal seeks an initial amount of **\$15,764,212** to address the immediate needs of approximately 300,000 people considered to be the hardest hit by the Tropical Depression 12E. Priority activities that will be implemented through this Flash Appeal are in the clusters/sectors of: shelter, food assistance, WASH, health, education, protection and agriculture.

**Basic humanitarian and development indicators for El Salvador**

➤ Population	6.2 million
➤ Under-five mortality	19 p/1,000
➤ Life expectancy	72 years
➤ Prevalence of undernourishment in total population	8.6%
➤ Gross national income per capita	\$3,370 ( <a href="#">UNICEF MICS 2009</a> )
➤ Percentage age of population living on less than \$1.25 per day	25.8 % ( <a href="#">UNDP HDR 2009</a> )
➤ Proportion of population without sustainable access to an improved drinking water source	13.0% (WHO/UNICEF JMP 2010)
➤ Proportion of population without access to basic sanitation	13% (WHO/UNICEF JMP 2010)
➤ <a href="#">UNDP HDR 2009</a> Development Index score	90/162 (middle HDI)

<sup>1</sup> All dollar signs in this document denote United States dollars. Funding for this appeal should be reported to the Financial Tracking Service (FTS, [fts@un.org](mailto:fts@un.org)), which will display its requirements and funding on the current appeals page.

**TABLE I: SUMMARY OF REQUIREMENTS GROUPED BY CLUSTER**

El Salvador Flash Appeal  
as of 23 October 2011  
<http://fts.unocha.org>

Compiled by OCHA on the basis of information provided by appealing organizations.

Cluster/sector	Requirements (\$)
AGRICULTURE	2,771,400
EDUCATION	1,256,612
FOOD ASSISTANCE	4,617,272
HEALTH	1,177,769
PROTECTION and SECURITY	984,266
SHELTER	2,755,000
WATER, SANITATION and HEALTH	2,201,893
<b>Grand Total</b>	<b>15,764,212</b>

**TABLE II: SUMMARY OF REQUIREMENTS GROUPED BY APPEALING ORGANIZATION**

El Salvador Flash Appeal  
as of 23 October 2011  
<http://fts.unocha.org>

Compiled by OCHA on the basis of information provided by appealing organizations.

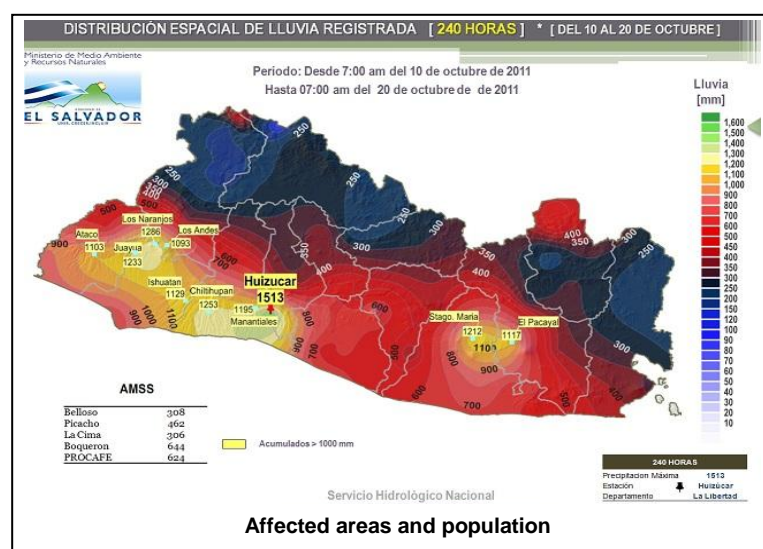
Appealing Organization	Requirements (\$)
CARE El Salvador	125,000
CRS	200,000
FAO	915,400
Fundación Seraphim	171,142
IOM	1,700,000
LWF	350,000
Oxfam America	1,144,577
PAHO (WHO)	1,556,000
Plan	362,020
SC	187,338
UNDP	1,000,000
UNFPA	226,769
UNICEF	2,746,366
WFP	3,688,600
WVI (El Salvador)	1,391,000
<b>Grand Total</b>	<b>15,764,212</b>

## 2. CONTEXT AND HUMANITARIAN CONSEQUENCES

### 2.1 CONTEXT AND RESPONSE TO DATE

The arrival of Tropical Depression 12E in El Salvador on 10 October 2011 brought unprecedented heavy rainfall, especially along the coastline and the volcanic chain, in the east and centre of the country. The persistence of the storm generated two low-pressure systems, leading to torrential rains for more than ten days in El Salvador, causing severe flooding and 879 landslides in most of the country's 14 departments. The most impacted areas are known to be amongst the most vulnerable in the country to this type of natural phenomenon.

Notwithstanding being a tropical depression, the lowest category of storms, TD 12E has created havoc throughout the country and is considered the worst disaster in the history of El Salvador which, incidentally, is the smallest and most densely populated country of Central America. Data from the MARN show that the levels of rainfall between 10 and 18 October reached 1,500 millimetres, surpassing that of Mitch (861 mm) and Stan (766 mm). The record-breaking rainfall levels quickly led to maximum capacity levels in all of the nation's dams. This, in turn, caused a rise in the discharge volume to 9,000 cubic meters per second, further flooding populated zones and crops downstream. The amount of water received in ten days corresponds to the annual average rainfall.



On 19 October, only two days after declaring a National State of Emergency, President Mauricio Funes made an official appeal for international humanitarian assistance. President Funes subsequently announced that one million people were affected directly or indirectly by the flooding across the country. To date, the Civil Protection and the UN estimate that at least 300,000 persons are most adversely affected, equivalent to 5% of the total population. 35 people have died and 55,976 people have been evacuated in 638 shelters. The rains affected 181 Municipalities - 70% of all in the country. Flooded homes total around 20,000 at present, although this figure might increase now that access to certain areas has improved with the reduction of rainfall. Infrastructure damage hampers the access to affected areas as many roads are blocked by debris or isolated by flooding and landslides. The Government of El Salvador estimates the flooded area at 2,000 km<sup>2</sup>, equivalent to 10% of the country.

The sum of direct and indirect damage caused by depression 12E could reach up to 5% of GDP, of which about 40% (about \$400 million) corresponds to direct damage and the remaining 60% to indirect damage, which will have an important effect on economic flows. As with Hurricane Mitch, the worst affected economic sector is agriculture, followed by trade and infrastructure (transport and communications, energy and water and sewerage) and social sector (housing, health and education). In one of the highest risk countries in Latin America due to the socioeconomic and physical vulnerability, where 88.7% of the territory is considered at risk of disaster, and 95.4% of the population is at risk, this event comes at a very critical moment for the country. At the time of the disaster, El Salvador was already experiencing an important process of fiscal consolidation, a high level of public indebtedness, high unemployment (especially amongst youth) and epidemic violence levels. It only remains to be seen, in the medium term, how the effects of tropical depression 12E will further exacerbate an already precarious social and economic situation.

In El Salvador, which is one of the Latin American countries most affected by the global economic crisis, the macroeconomic indicators indicate that the global financial crisis is eroding advances in poverty reduction, employment levels, and progress of other MDGs and targets in 2009, real GDP decreased by 3.3 percentage. The slower growth of economic activity affected the productivity of many business and employment. More than 30,000 formal jobs were lost, and despite the fact that the unemployment rate did not change significantly, informal employment, as well as underemployment, have increased considerably, with its attendant insecurity and lack of guarantees regarding minimum wage and social protection. Remittances, which before the crisis represented 18 percentage of GDP and were received by 25% of Salvadoran households, has decreased by 9.9% in 2009. In nominal terms, the reduction of remittances represented a loss of \$323 million to the national economy. Government tax income for 2009 was 11 lower than in 2008. The fiscal deficit for 2009 was 5.4% of GDP for 2009. The impacts of this national disaster will most likely obligate the government to redirect scarce national resources to emergency action, recovery and reconstruction, away from the traditional business of long-term development.

Up to 33% of the population lacks acceptable housing. This situation is especially vulnerable in urban areas, where 36% of urban dwellings are classified as precarious, in part due to the rapid and unplanned urbanization process over the last two decades. High levels of deforestation, which have led to the progressive reduction of nation’s natural forest cover to 2%, also contribute to the country’s vulnerability. Deforestation has induced progressive desertification, along with increased probability of mudslides and landslides, causing frequent disasters.

The Government created the National Committee of Rehabilitation and Reconstruction (CNRR), which is integrated by the Ministers of; Public Works, Agriculture and Livestock, Education, Health, Finance, Environment and Natural Resources, State, Tourism, Economy, and the Vice-ministry of Housing and Urban Development, with the objective of planning resource use in the rehabilitation and reconstruction phase.

UN agencies, IOM, the International Red Cross/Red Crescent Movement and NGOs have been working closely to support and complement the government’s efforts to respond to the emergency.

**Key facts and figures of response to date in El Salvador**

Sector	
<b>Food Aid</b>	<ul style="list-style-type: none"> <li>• World Food Programme (WFP) has distributed 24.32 MT of fortified biscuits to 4,278 families, approximately 81,000 daily rations.</li> </ul>
<b>Agriculture</b>	<ul style="list-style-type: none"> <li>• Food and Agriculture Organization (FAO), WFP, and the Ministry of Agriculture (MoA&amp;L) work in a damages assessment joint mission and supporting the affected local farmers.</li> <li>• The three agencies work in a cooperation project for the recovery of production capacity of live hoods of small farmers families.</li> <li>• World Society for the Protection of Animals (WSPA) is currently mobilizing an evaluation and damage assessment team.</li> </ul>
<b>Health &amp; Nutrition</b>	<ul style="list-style-type: none"> <li>• Pan-American Health Organization (PAHO) has supported national authorities with medical items and medicines.</li> <li>• A team of PAHO and the Ministry of Health (MINSAL) are developing assessments in damaged health centres.</li> <li>• Two UNFPA mobile health centres are supporting people in shelters.</li> </ul>
<b>Logistics &amp; Telecommunications</b>	<ul style="list-style-type: none"> <li>• United Nations Development Programme (UNDP) has donated telecom equipment to national authorities in order to facilitate civil protection related communication and coordination.</li> </ul>
<b>Protection</b>	<ul style="list-style-type: none"> <li>• Humanitarian Country Team (HCT) called for the creation of a gender cluster and incorporated a focal point from the Institute for the development of women in each sectorial table in order to prevent sexual gender based violence (SGBV).</li> </ul>

<b>Shelter &amp; NFIs</b>	<ul style="list-style-type: none"> <li>• United Nations Children’s Fund (UNICEF) has collected and organized information of schools used as shelters.</li> <li>• United Nations Population Fund (UNFPA) has supported shelter cluster with technical resource for the process, analysis, and systematization of information to the attention of people in shelters.</li> <li>• IOM in coordination with the Vice-Ministry of housing and local NGOs organize a joint coordination plan to care for the population in shelter and ensure a prompt return to their homes.</li> <li>• IOM has mobilized two assessment teams for collecting data in the shelters located in the Department of Usulután. The team also evaluated the housing situation in this department.</li> <li>• In addition to the Common Humanitarian Fund (CHF) 191,129 already allocated from IFRC Disaster Relief Emergency Fund (DREF), IFRC launched a Preliminary Emergency Appeal on 21 October 2011 seeking CHF 1,185,025 (\$1.33 million) in cash, kind, or services to support the Salvadoran Red Cross Society (SRCS) to assist 2,000 families (10,000 people) for 9 months."</li> </ul>
<b>WASH</b>	<ul style="list-style-type: none"> <li>• Water supply to shelters distribution using tanks, bottled water, chlorination.</li> <li>• Monitoring and evaluation of damage in affected areas.</li> <li>• Distribution of equipment, supplies and biological waste management.</li> <li>• UNFPA has supported the institute for development of women with 3,000 hygiene kits and organized women networks with another 2,000</li> </ul>
<b>Government actions</b>	<ul style="list-style-type: none"> <li>• Overall leadership of the humanitarian and civil protection response</li> <li>• Water supply to shelters distribution using tanks, bottled water, chlorination.</li> <li>• Assessment of damage in the affected areas by teams from the MINSAL (Health Promoters).</li> <li>• Community education and information for prevention of disease by ingesting unsafe water.</li> <li>• Fumigation in shelters and affected areas and animal control.</li> <li>• Solid waste management in shelters.</li> <li>• Debris management in affected areas.</li> </ul>

**Other ongoing humanitarian responses to the crisis**

So far the total amount of contributions to the emergency in El Salvador reaches \$594,855 from Japan, Luxembourg, the United States of America, and the IFRC DREF. For ease of reference refer to the Financial Tracking System (<http://fts.unocha.org>)

**2.2 HUMANITARIAN CONSEQUENCES AND NEEDS ANALYSIS**

**1. Agriculture**

The effects of the flood and landslides have aggravated the level of food insecurity, already worsened by the effects of the current international financial and economic crisis. The destruction of essential assets during this emergency, such as homes, rural infrastructures, livestock and the loss of harvest and stock will hamper the livelihood of the affected households.

Preliminary assessments of 73 Municipalities suggest direct losses are concentrated in the production of basic grains. The greatest losses are maize production with 23%, 18% of rice production and beans with 10%. The production of milk and vegetables has also been heavily affected. In Zapotitan, in the Department of La Libertad, a region principally dedicated to producing vegetables, the losses are estimated at 80%.

Of all producers nationwide, an estimated 31% (122,650) have been affected because they live and have farms located in the 67 Municipalities impacted by the phenomenon. Of these, 17% (21,154) are commercial producers and the majority 83% (101,496) are subsistence farmers. Of the total of 122,000 farmers likely to be affected, 12% (14,667) are women, 87.7% (107,616) are male and the remaining 367 are legal entities (cooperatives, development associations, NGOs and agricultural association).

---

The affected families are at risk of being further impacted by exacerbated food insecurity, hunger, malnutrition and poverty, as they may likely use all their reserves immediately and do not have the resources to buy more food and farming tools used in their plots, which will eventually have a negative impact on the harvest season. By losing their sources of income and assets, the vast majority will have to rely heavily on food aid. Most families depend on subsistence agriculture for their income, where the majorities are temporary workers.

The projects presented in the Flash Appeal will focus on the provision of basic agriculture inputs for backyard gardens, such as vegetable seeds, fertilizers and hand tools, which can help the affected population to revitalize production of vegetables at household level, which will in turn increase micro-nutrient intakes. Given that one of the main pillars in the Salvadoran family diet is the consumption of beans, and 20% of the bean “seed” production is considered to be lost, it is imperative to reactivate the production by providing bean seeds and fertilizers. Additionally, there is a substantial loss of poultry production in small holdings in which chicken rearing was one of the main activities carried out by women.

## **2. Collective Centres Coordination and Management**

With more than 55,000 people in shelters and perhaps an even larger number hosted within communities, the provision of an integrated package of assistance to evacuees remains the top priority of the humanitarian response. While the number of collective centres tends to decrease, the Government foresees that the total number of people in need of shelter will remain high for the foreseeable future. The shelter sector requires large interagency and intersectorial efforts to support the Government in its efforts to meet all requirements traditionally associated with collective centres (WASH, Food Assistance, Health, Protection and Education).

The Technical Sectorial Working Commission on Collective Centres is led by the Vice Minister of Home Office (Governance), with an active participation of national and international organizations, as well as a large number of volunteers. The data collection comes through the governors (department level) who receive municipal-level information in standardized factsheets. The information is compiled in a database that is daily updated. The needs are reported to the Logistics Commission, led by the Army Forces, who are in charge of the delivery of food and non-food, supplying what the Departments and Municipalities may need to complement from the national level.

From the information that is collated from different levels, actions are oriented to provide affected families with basic materials and/or non-food items (NFIs) to establish temporary shelter through self-construction and volunteer efforts, in a progressive scheme within a medium-long term vision. This also includes:

- Ensuring that temporary shelters are established in secure areas and comply with minimum safety standards.
- Ensuring better management of Shelter (Collective Centres). This will be achieved through the presence of NGO partners who can identify needs and gaps, and can take remedial action.
- Provision of basic materials to improve emergency shelter.

International donations have been provided to the Secretariat of Social Inclusion (SIS), consisting of the following materials: 101 Kits for Shelter Administration; 67 Kits for Shelter Living; 185 posters on hand-washing; 3,000 flyers on personal hygiene; 743 flyers on hand-washing. They will be distributed in the shelters via the field missions of the Commission of shelters and of logistics of the central government (Civil Protection – Home Office). UNICEF, UNFPA and UN Women have actively provided their support in different areas of the SIS.

The situation will soon evolve into a gradual process of returning home for the majority of sheltered persons, due to the normalization of the weather, immediately influenced by a cold front. This may bring other risks taking into account the precarious shelter conditions after the floods, and the loss of personal belongings to protect the affected population from acute respiratory diseases.

---

### 3. Education

The impact of the disaster on Salvadorian children is significant. The Ministry of Education's (MINED) initial findings estimate that a total of 7,846 families are living in shelters located in schools with a total population of 26,551 people. Of these, 7,030 are girls, 6,821 are boys, 7,564 are women and 5,136 are men. Approximately 267 schools are either damaged or destroyed because of the climatic event and 257 are being used as shelters. Because of this situation, approximately 170,000 children and adolescents will not be able to return to school once the tropical depression ends. Additionally, because of the closure of the school centres in the whole country, all children in the educational system will have to recuperate their studies through a curricula adjustment.

MINED has highlighted the need for temporary educational facilities, basic school supplies and educational materials, as well as training for teachers affected by the tropical depression to address and cope with emergencies. There is a critical need for psycho-affective care to teachers, school-aged children, and their families, assisted by other teachers, previously trained and health promoters.

Studies and experience from previous emergencies illustrates that ensuring the prompt return of children to schools is one of the most valuable emergency interventions that can take place. Normalization of the situation after the emergency is crucial in order to guarantee the psychological health of children and their families. In this aspect, schools play an important role, and a maximum effort should be made to make schools operational and friendly as soon as possible, ensuring return with efficiency and quality. This requires not only measures related to learning, but also adequate repairs to schools including water and sanitation facilities that have been damaged by the disaster or that have been used as shelters. If schools cannot be operational soon enough, temporary learning spaces should be established and learning should continue with the necessary supporting school and WASH materials.

### 4. Food Assistance

It is critical to ensure food security of populations in shelters (up to 55,000 people) and in isolated communities in flooded areas where affected populations are either unable or unwilling to evacuate to safer environments. National authorities have concentrated their food assistance efforts on populations sheltered in collective centres (so called "*albergues*"), and are asking the international community to provide assistance to isolated communities. Reports from partners in the field, as well as from IOM and WFP field missions, indicate that there are significant gaps to cover the needs of sheltered populations. These missions also indicate that a large proportion of those sheltered (up to 45% according to IOM) are children and women and that their special nutritional needs are not currently being covered.

As a result, WFP will provide immediate relief through the distribution of fortified biscuits (for a period of up to 5 days) to isolated and flooded communities as well as emergency family food rations to sheltered populations that have not received assistance from national authorities. A supplementary feeding ration will also be provided to children less than five years of age and pregnant and lactating mothers in collective centres. The initial response phase is expected to last from 2 to 4 weeks, and will be financed through WFP's Immediate Response Account. WFP calculates that a third of the 300,000 people that the government estimates have been affected by floods and landslides across the country will still require emergency food assistance after this initial response phase.

According to the latest Comprehensive Vulnerability and Food Security study carried out by WFP in 2010-2011, 30% of the population in affected departments and municipalities were already consuming a poor and insufficient diet, making these populations particularly vulnerable to the high levels of food insecurity that follow from this type of disaster. As a result, the stabilization of the weather conditions will determine that the sheltered populations will return to their ravaged communities, and isolated communities will be accessible again. WFP will still need to provide a family ration for an extra month, to up to 50,000 people.

---

## 5. Health

Approximately 138 health facilities have been affected. Even if affected communities are able to access health services, flooding in clinics and hospitals has destroyed drug supplies and equipment, thus the health network's ability to provide services during this emergency is severely hampered. Much of this damage has also affected specialized services such as the chronic renal failure clinic from Bajo Lempa, Sonsonate's Hospital and at least nine health units in the most affected areas. The sanitation situation in health centres is also poor due to the flood waters and sterilization of hospital services has been disrupted. MINSAL will be responsible of the distribution of medicines and medical supplies to the Chronic Renal Failure (CRF) patients.

The health sector during the emergency is led by the national health inter-sectorial technical commission, integrated by representatives from several public institutions, private sector, civil organizations and international cooperation agencies, under the leadership of the MINSAL. Four commissions have been organized with specific objectives and responsibilities like Surveillance, Medical Attention, Mental Health, Communications and Health promotion and Water and Sanitation. These specific commissions are responsible to evaluate, plan and execute interventions focused on affected areas. The national health inter-sectorial technical commission prioritized action areas as an important part of the review and definition of the project to attend needs generated by the emergency and close gaps. Some of the actors are MINSAL, PAHO/WHO, World Vision International (WVI), UNFPA, Plan International (PLAN), among others.

### **The criteria considered for selecting highlighted projects are**

1. Saving lives
2. Impact of emergency or damages to the health service and
3. Coverage of population affected

Special attention will be given to awareness for, and prevention of, and response to waterborne and respiratory diseases in overcrowded and poor living conditions, as well as to the prevention of measles, N1H1, diarrhoea and hepatitis outbreak, among others. Special information, prevention messages and activities with the aim of limiting the risk of leptospirosis outbreak (due to contact with water contaminated by urine of infected rats); and vector-borne diseases (in relation with proliferation of mosquito breeding sites as water recedes) will be prioritized. Prevention of tetanus will also be ensured for wounded. Needs in terms of mental health and psychosocial support will also be assessed and addressed as well as increased risk of family separation and related vulnerability to protection concerns (i.e. exploitation, trafficking). In a second phase, actions will be taken to re-establish the primary health network as well as some of the hospital in the affected areas.

## 6. Protection

Severe stress during and after the disaster has affected the displaced population, and created psychological needs that have to be immediately attended to stabilize the emotional health and well-being of children and families.

55,976 people are currently registered in 638 emergency collective centres. The population profile in collective centres is as follows: 16% below 5 years old; 13% between 5 and 9 years old; 24% between 9 and 18 years old; 4% are above 65 years old; and 53% are women. Approximately 14,000 women are in reproductive age and 2,000 are elderly. Reports are already being presented detailing cases of sexual abuse and harassment in collective centres, and it is estimated that 280 may be victims of sexual violence.

The majority of the sheltered population has lost its ability to provide for their own basic needs due to major damage to property as well as risk of returning to homes. Displacement and coexistence with strangers has caused psychological distress and vulnerability to all sorts of abuse including gender based violence, psychological, physical and emotional abuse. Recreation facilities are often lacking incrementing the level of psychosocial distress for shelter residents.

---

Given the high indices of criminality and social conflicts that have affected Salvadoran society in recent decades, it is necessary to take the actions to guarantee the security and well-being of the population residing within emergency shelters and the geographical areas affected by the emergency. The first cases of coexistence in these adverse living situations are already being reported and more cases must be prevented as possible.

### **7. Water and Sanitation**

Since the beginning of the emergency, many reports emerged regarding the contamination of water sources, thus prompting the General Director of Civil Protection to announce the implementation of a contingency plan for water pollution, through the provision of water purifiers and desalination plants in the zones most affected by floods. The MINSAL Sub-Commission on Health and Sanitation has organized evaluation missions to the shelters in the most affected departments to evaluate the water and sanitation situation.

The shelter conditions are not ideal with shared sleeping and hygiene facilities that are generally in poor condition. Children under 5 have been particularly vulnerable due to inability to wash cloth diapers and poor nutrition. Deficient hygiene and high levels of humidity have also incremented the risk of dengue. Safe water provision in flooded rural communities, kits for purification of water and waste-disposal for the population in the collective centres are still important requirements in many of the affected areas.

According to the damages assessment available at the time of finalizing the Flash Appeal, it is imperative to establish minimum sanitary conditions to prevent epidemics and outbreaks of diseases related to lack of safe water and adequate sanitation. The main humanitarian needs are to supply safe water cleaning wells, promote hygiene behaviour, and provide sanitation facilities, and WASH in learning/child friendly spaces.

## 2.3 SCENARIOS

Even though the rainy season is coming to its end and the meteorological forecasts do not predict heavy rains for the next months, the region is entering in a transition phase to the “*La Niña*” phenomenon, which could cause isolated precipitations in several places of the country, which could in turn still generate a potential risk due to the saturation of water in the soil. During 2010 the country received 41% more rain with respect to the regular annual average, which provoked a saturation of the soil from that moment on, being the accumulated precipitations for this year 27% higher than the annual average. This could generate sudden floods due to overflows in the basins and landslides detonated by the excessive amount of water in the hillsides, which are currently saturated with water. In the case of earthquakes, additional landslides could occur in these places, in a similar vein of what happened in the San Salvador Volcano-Montebello in 1982 and in Las Colinas during the earthquake of 2001.

### Best scenario

In the case of rainfalls in the next months, these would be slight and isolated, falling in a scattered pattern until December, not causing damages or destruction in any of the areas affected by the floods and landslides like those caused by the Tropical Depression 12E. The rivers will return to their banks in one month, withdrawing from the flooded zones, thereby facilitating a prompt return of the thousands of displaced to their homes.

### Worst scenario

Since the rain that fell until 18 October had already tripled the regular average precipitations of October, one of the worst scenarios could be the advent of a new meteorological phenomenon could affect the country with heavy rains, coinciding with the hurricane season that is still in effect until the end of November.

Another possibility could be that heavy storms occur; generating new floods and landslides, increasing the number of affected people. In the worst case, a landslide from the San Salvador and San Vicente volcanoes could cause a significant number of deaths and destruction of infrastructure and means of livelihood.

Core elements of most likely scenario	Effects on humanitarian needs and operations	Population most affected
<ul style="list-style-type: none"> <li>High levels of floods water and health care infrastructure damaged.</li> </ul>	<ul style="list-style-type: none"> <li>Reduced coping strategies for vulnerable and poorest segment of population</li> <li>Prolonged disruption of critical services (power, water and sanitation, health and education)</li> <li>An increase in food insecurity</li> <li>Population forced to move</li> <li>Increased need for livelihoods support</li> <li>Increased risk of diarrhoea, respiratory infections, Dengue Fever, Leptospirosis and Malaria</li> </ul>	<ul style="list-style-type: none"> <li>25,000 children under five</li> <li>5,000 pregnant/lactating women</li> <li>40,000 people with chronic diseases (HTA, DM, CRF)</li> <li>12,000 people with disabilities</li> </ul>
<ul style="list-style-type: none"> <li>Significant percentage age of affected population obliged to remain in camps</li> </ul>	<ul style="list-style-type: none"> <li>Increase the vulnerability of risk for diarrhoea and respiratory infections outbreak</li> <li>AH1N1, Dengue Fever, Leptospirosis and Malaria</li> <li>Humanitarian operations must cater to camp and off-camp</li> <li>Populations, as well as host communities</li> <li>Increase in protection concerns and reported cases of SGBV</li> </ul>	<ul style="list-style-type: none"> <li>5,000 people will be kept longer time (more than 4-6 moths) in the shelters</li> <li>Target population around 3,000 girls and women</li> </ul>
<ul style="list-style-type: none"> <li>Large number of diverse actors carrying out relief activities across same places</li> </ul>	<ul style="list-style-type: none"> <li>Need for strong and effective coordination structures across all areas and clusters to ensure timely, needs-based and appropriate assistance</li> </ul>	

---

### **3. RESPONSE PLANS**

#### **3.1 STRATEGIC PRIORITIES FOR HUMANITARIAN RESPONSE**

During the last five years, El Salvador was affected by several natural hazards and disasters, especially floods and earthquakes. During this time, huge efforts were made by national and sub-national authorities, as well as local communities to strengthen their capacities in disaster risk reduction, with the support of national and international NGOs and the financial support of the international development community.

At the same time the government has taken important measures to improve national coordination to attend to this type of hazard, involving all the sectors, with the creation of the national commission of civil protection and several specialized technical commission conformed by ministers.

The results of this national preparedness and coordination at both central and local levels, has been a reduction in the number of casualties with respect to previous phenomena like "Ida". This time, however, despite the severity of the climatic event, only 35 casualties have been registered. This climatic event has severely impacted the overall macro-economic situation, whilst social protection and basic services are being strained thereby placing in precarious conditions more than 300,000 directly affected people out of a total of 1,000,000 people impacted by the emergency.

The Flash Appeal is solicited to enhance the national efforts to maintain basic standards of humanitarian aid, save and sustain lives, protect the rights of the most vulnerable, currently living in shelters, supporting the gaps of assistance, especially in all the isolated communities and those that lost their hard earned livelihoods.

A coordinated effort is in place, which counts with the participation of all humanitarian actors in the country and the support of the international cooperation, under national leadership. Simultaneously, the active involvement of communities and municipal governments will ensure a speedy transition from emergency relief to early recovery.

Focused and holistic support will be provided, ensuring that communities currently in collective shelters are able to return to their private dwellings and restart normal lives, restoring their livelihoods and recovering their productive assets, preserving adequate education, physical and mental health, and in many ways restarting their lives in their old or new places in safety. All these actions will require a coordinated and collaborative framework of engagement among sectors and humanitarian actors that are responsible to advance the humanitarian response, swiftly, effectively, by ensuring transparency and accountability.

#### **The main areas of interventions are**

##### **i) Shelter**

- Ensure shelter areas are organized in such a way as to promote the safety and protection of children and women, including location and separation of WASH facilities, good lighting.
- Provision of appropriate shelter materials, including blankets, kitchen kits.
- Prevent violence, abuse and exploitation in shelters and empower children, adolescents and women to safeguard themselves against protection concerns through awareness raising and teaching of self-care techniques, creation of safe spaces, provision of psychosocial support, and promotion of family unity.

**ii) Ensure the delivery of WASH services to save lives, providing clean water, adequate sanitation and hygiene promotion for 300,000 affected people, with special emphasis on women and children, contributing to reduce the incidence of diseases caused by lack of adequate water conditions and sanitation in shelters and areas affected by Tropical Depression 12E, through the following actions:**

- Provision of safe water in shelters and affected areas to minimize risk of morbidity / mortality.

- 
- Repair of the affected water and sanitation systems in highly-impacted areas. Distribution of hygiene kits or other means to ensure personal hygiene, ensuring specific needs for women and children are addressed.
  - Education and information to the town is home to reduce the appearance of diseases caused by unsafe water intake, lack of sanitation and hygiene and vector.
  - Dissemination of information on safe water treatment and storage at household level, adequate excreta disposal and personal hygiene measures.

**iii)** To meet the immediate needs of food insecure populations affected by Tropical depression 12E and the ensuing rains, in a timely manner to protect their livelihoods and avoid a deterioration of their nutritional status.

- Provide immediate and lifesaving food assistance to 80,000 persons belonging to vulnerable population groups in 11 departments most affected by Tropical Depression 12E, in a way that is complimentary and aligned with the government's emergency response strategy.
- Assist in the sustainable recovery of livelihoods in the affected communities and the rehabilitation of agricultural assets and basic community infrastructures, as a fundamental step in re-establishing food security and nutrition in the affected communities
- Support the national capacities to provide health services for the affected population, mainly for the people staying in shelters, by multidisciplinary teams allocated into the net health services. The medical attention is giving in integral manner (multidisciplinary teams) and 24 hours.

**iv)** To ensure access to life-saving primary and secondary health care services for the population affected by the floods and landslides, including for psychosocial support, and detect and prevent occurrence of outbreaks of communicable diseases.

The emergency is driven by the national health inter-sectorial technical commission which integrates representatives from several public institutions, private sector, civil organizations and international cooperation agencies, and is led by MINSAL. Four different specific commissions have been organized with specific objectives and responsibilities like Surveillance, Medical Attention, Mental Health, Communications and Health promotion and WASH. These specific commissions are responsible to evaluate, plan and execute interventions focused on affected areas.

**The main interventions are oriented to**

- Provide medical attention and mental health assistance specially targeted to vulnerable populations such as women, infants and elderly.
- Strengthening the surveillance, especially for Dengue fever, diarrhoeal, AH1N1, acute respiratory disease, acute complications of chronic diseases among others.
- Provide and warranty of medicines and medical supplies,
- Special attention will also focus on Sexual and Reproductive matters.

---

## 3.2. CLUSTER RESPONSE PLAN

### 3.2.1 SHELTER

#### Sectorial objectives

- Ensure better management of *albergues* (Collective Centres). This will be achieved through the presence of NGO partners who can identify needs and gaps, and can take remedial action. In 5 departments, *albergues* will be visited on a routine basis by partner NGOs and IOM field team. Needs will be identified and where assistance is absent, appropriate clusters and partners will be contacted.
- Ensure proper living conditions for internally displaced people (IDPs) residing in *albergues* by providing necessary infrastructure improvement. A number of cross cutting issues, such as GBV, Gender, special needs, and vulnerabilities will be properly attended through improved access, separation, lighting, etc. An IOM Technical Team, working in coordination with partner NGOs and local authorities administrating *albergues* will deploy to the field on a daily basis and will respond to needs identified by the camp managers.
- Improve basic living conditions through the provision and distribution of NFIs. Families who require assistance will receive hygiene kits, comfort kits, kitchen kits to make sure that they have necessary items during the period of displacement.
- To provide response to the families affected by the tropical depression by giving them a progressive temporary house or improvement of their houses.

#### Strategy and proposed activities

- Objectives will be achieved through partnerships with the “*Comision Tecnica de Albergues*”, NGOs, *albergue* administrators and IOM. The established coordination mechanism will ensure a proper flow of information and will be a forum to exchange ideas and share good practices. Coordination will ensure a better use of resources and maximum coverage. Also, criteria will be set and standards harmonized.
- In each of the targeted municipalities, contracted NGOs will routinely visit the selected *albergues* to review the situation, inspect infrastructure, meet and speak with beneficiaries to learn from them. Advice will be shared with *albergue* administrators and the NGOs will report to IOM. Referrals will be made as necessary to other clusters and agencies.
- NGOs will identify beneficiary families who may require assistance in NFIs and will distribute accordingly. Also, NGOs, administrators and the IOM field team will constantly review the infrastructure to ensure that it properly meets the needs of the collective centres residents. Improvement will be made as necessary.

#### Expected outcomes

- Residents in *albergues* will benefit from improved protection and specific consideration, in a greater security environment, and reduced gender based violence (GBV).
- Beneficiary families in *albergues* will receive better attention and quality of life will improve; management capacities and a better understanding of what services are available to them.
- Families will have necessary items for personal hygiene; have the necessary items to cook and eat food and to sleep comfortably.
- Beneficiaries families received technical assistance to use properly given housing kit

## Projects

<b>Agency</b>	<b>IOM</b>
<b>Project title</b>	<b>Continued assistance to families residing in Collective Centres (NFIs) Hygiene Kits, Comfort Kits / Departments of Usulután, Sonsonate, Ahuachapán, La Paz, La Libertad.</b>
<b>Objective</b>	Improve basic living conditions through the provision and distribution of NFIs. Families who require assistance will receive hygiene kits, comfort kits, kitchen kits to make sure that they have necessary items during the period of displacement.
<b>Beneficiaries</b>	2.000 families (Families of approximately 5 member, for a total of 10,000 people)
<b>Partners</b>	WVI, PLAN, World Lutheran Foundation, Coordinadora Nacional de la Mujer Salvadoreña (CONAMUS), Technical Commission for Collective Centers ,Collective Center Administrators
<b>Project code</b>	<b>SLV-11/S-NF/46310/298</b>
<b>Budget (\$)</b>	<b>400,000</b>
<b>Agency</b>	<b>IOM</b>
<b>Project title</b>	<b>Collective Centre Management: ensuring proper accommodation and attending to cross-cutting issues in 75 shelters / Usulután, Sonsonate, Ahuachapán, La Paz, La Libertad</b>
<b>Objective</b>	Ensure better management of Collective Centres. This will be achieved through the presence of NGO partners who can identify needs and gaps, and can take remedial action. In 5 departments, collective centres will be visited on a routine basis by partner NGOs and IOM field team. Needs will be identified and where assistance is absent, appropriate clusters and partners will be contacted.
<b>Beneficiaries</b>	2.000 families
<b>Partners</b>	WVI, Plan International, World Lutheran Foundation, CONAMUS, Technical Commission for Collective Centers, Collective Center Administrators
<b>Project code</b>	<b>SLV-11/S-NF/46340/298</b>
<b>Budget (\$)</b>	<b>700,000</b>
<b>Agency</b>	<b>IOM</b>
<b>Project title</b>	<b>Support reintegration for 1000 families whose houses have suffered minimal damage: Shelter Kits and Cleaning Kits / Usulután, Sonsonate, Ahuachapán, La Paz, La Libertad</b>
<b>Objective</b>	Ensure better management of Collective Centres. This will be achieved through the presence of NGO partners who can identify needs and gaps, and can take remedial action. In 5 departments, collective centres will be visited on a routine basis by partner NGOs and IOM field team. Needs will be identified and where assistance is absent, appropriate clusters and partners will be contacted.
<b>Beneficiaries</b>	2,000 families
<b>Partners</b>	WVI, Plan International, World Lutheran Foundation, CONAMUS, Technical Commission for Collective Centers, Collective Center Administrators
<b>Project code</b>	<b>SLV-11/S-NF/46351/298</b>
<b>Budget (\$)</b>	<b>600,000</b>
<b>Agency</b>	<b>UNICEF</b>
<b>Project title</b>	<b>Provision of NFIs and assistance</b>
<b>Objective</b>	Provide basic materials to facilitate the return to homes for families whose houses have suffered minimal damage.
<b>Beneficiaries</b>	1,000 families
<b>Partners</b>	WVI, Plan International, World Lutheran Foundation, CONAMUS, Technical Commission for Collective Centers, Collective Center Administrators
<b>Project code</b>	<b>SLV-11/S-NF/46358/124</b>
<b>Budget (\$)</b>	<b>355,000</b>
<b>Agency</b>	<b>World Vision International (El Salvador)</b>
<b>Project title</b>	<b>Immediate assistance to affected families for returning to their own houses and communities</b>
<b>Objective</b>	To provide response to the families affected by the tropical depression by giving them a progressive temporary house or improvement of their houses.
<b>Beneficiaries</b>	201 families affected by the tropical depression 12E in the municipalities of San Francisco Menéndez, Acajutla, San Julián and Armenia
<b>Partners</b>	Local Governments
<b>Project code</b>	<b>SLV-11/S-NF/46365/5490</b>
<b>Budget (\$)</b>	<b>700,000</b>

---

### **3.2.2. WATER, SANITATION AND HEALTH (WASH)**

#### **LEAD AGENCY: PAHO/WHO**

##### **Sectorial objectives**

- Reducing the impact on people affected by the emergency and re-establishing destroyed livelihoods.
- Restoring water and sanitation services in affected communities, providing supplies and material needed to have access to safe drinking water, sanitation facilities/services and hygiene.

##### **Strategy and proposed activities**

One of the priorities defined by the Salvadoran Government has been the provision of safe water and basic sanitation to the affected population. For this purpose we have defined the following plan of action:

- Supporting/reinforcing national coordination mechanism, ensuring critical gaps are being addressed and all responsible actors (humanitarian and not humanitarian) are included.
- Provision of safe water sanitation and hygiene seem to be the much bigger problems and will have a greater reduction in risk in shelters and affected areas to minimize risk of morbidity/mortality.
- Provision of sanitation facilities/services.
- Provision of soap and other hygiene related supplies.
- Repair of the affected water systems in urban areas.
- Repair/re-establishment of sanitation services.
- Education provided to the affected population on good hygiene practices to prevent water- and vector-borne diseases.
- Dissemination of information on safe water treatment and storage at household level, adequate excreta disposal and personal hygiene measures

##### **The criteria used for projects identified in the Flash Appeal are**

- Provide basic inputs for the population to have access to safe water, sanitation at the household level in the affected areas, especially rural areas
- Reset the minimum conditions of sanitation, management of solid waste and sewage, household and personal hygiene

##### **Expected outcomes**

1. People staying in shelters have access to sufficient safe water and adequate sanitation facilities.
2. Flood affected communities have access to sufficient safe water and adequate sanitation facilities.
3. Flood-affected populations are provided with information and education to prevent child illnesses, especially diarrhoea.
4. Children have access to safe water, sanitation and hygiene facilities in their learning environments and other temporary care spaces

## Projects

<b>Agency</b>	<b>PAHO</b>
<b>Project title</b>	<b>Improve safe drinking water and sanitation conditions.</b>
<b>Objective</b>	Provide safe drinking water, re-establishing wells, sewage disposal, and solid waste disposal.
<b>Beneficiaries</b>	25,000 peoples of communities and Municipalities affected.
<b>Partners</b>	WVI Plan El Salvador, Oxford Committee for Famine Relief (OXFAM), IFRC, Provida, Seraphim Foundation, MINED, MINSAL, UNICEF
<b>Project code</b>	<b>SLV-11/WS/46368/5497</b>
<b>Budget (\$)</b>	<b>680,000</b>
<b>Agency</b>	<b>UNICEF</b>
<b>Project title</b>	<b>WASH Interventions for rains and floods affected population in El Salvador</b>
<b>Objective</b>	Ensure the delivery of WASH services to save lives, providing clean water, adequate sanitation and hygiene promotion for 30,000 affected people, with special emphasis on women and children, contributing to reduce the incidence of diseases caused by lack of adequate water conditions and sanitation in shelters and areas affected by Tropical Depression 12E and ensure WASH facilities in learning centres and child friendly spaces..
<b>Beneficiaries</b>	30,000 peoples of affected areas, include 14,700 children and 15,700 women.
<b>Partners</b>	MINSAL, MINED, PROVIDA, Salvadorian Red Cross
<b>Project code</b>	<b>SLV-11/WS/46382/124</b>
<b>Budget (\$)</b>	<b>567,100</b>
<b>Agency</b>	<b>Seraphim Foundation El Salvador</b>
<b>Project title</b>	<b>Sanitation Re-establish from families affected by storm in Sonsonate and Usulután El Salvador</b>
<b>Objective</b>	Retrieve environmental sanitation to 300 families through the re-establish of 300 latrines and rehabilitation of 10 wells hand craft in areas affected by the storms in October 2011 in El Salvador.
<b>Beneficiaries</b>	300 families directly and 5000 people indirectly from Departments of Usulután and Sonsonate of El Salvador.
<b>Partners</b>	MINSAL, City Hall, Communities and NGOS.
<b>Project code</b>	<b>SLV-11/WS/46389/13206</b>
<b>Budget (\$)</b>	<b>171,142</b>
<b>Agency</b>	<b>OXFAM America</b>
<b>Project title</b>	<b>Water and Sanitation</b>
<b>Objectives</b>	To guarantee that the affected population (men, women, boys and girls) has access to potable water in the quality and quantity necessary to fulfil their needs for drinking, food preparation, hygiene and basic sanitation. To guarantee that the affected population (men, women, boys and girls) has access to basic sanitation conditions.
<b>Beneficiaries</b>	1500 families affected by Tropical Depression 12E living in the departments of La Paz, La Libertad and Sonsonate.
<b>Partners</b>	Local NGOs : Fundacion para el desarrollo (FUNDESA), Association for Communal Cooperation and Development of El Salvador (CORDES), CARITAS
<b>Project code</b>	<b>SLV-11/WS/46392/7152</b>
<b>Budget (\$)</b>	<b>573,651</b>
<b>Agency</b>	<b>World Vision International (El Salvador)</b>
<b>Project title</b>	<b>Water and sanitation</b>
<b>Objective</b>	To give response to the affected families due to the tropical depression 12- E by providing them household filters that allow them treating the water they consume, in order to decrease the illnesses related to water and to train them on hygiene habits and basic sanitation.
<b>Beneficiaries</b>	1,600 families affected by the tropical depression 12E in the Municipalities of San Francisco Menéndez, Acajutla, Caluco, San Julian and Armenia.
<b>Partners</b>	MINSAL and World Vision Area Development Programs.
<b>Project code</b>	<b>SLV-11/WS/46393/5490</b>
<b>Budget (\$)</b>	<b>110,000</b>
<b>Agency</b>	<b>World Vision International (El Salvador)</b>
<b>Project title</b>	<b>Hygiene and Sanitation Promotion</b>
<b>Objective</b>	To contribute in the control and/or prevention of illnesses that put families in risk, after happening a natural disaster implementing activities of sanitation promotion.
<b>Beneficiaries</b>	500 families in the Municipalities of Francisco Menéndez, Cara Sucia hamlet, Garita Palmera and Acajutla, Metalio hamlet and La Barra de Santiago
<b>Partners</b>	MINSAL, Communal Development Association (ADESCOS), Area Development Programs located in the mentioned Municipalities.
<b>Project code</b>	<b>SLV-11/WS/46406/5490</b>
<b>Budget (\$)</b>	<b>100,000</b>

---

### 3.2.3 FOOD ASSISTANCE

#### LEAD AGENCY: WFP

##### Sectorial objectives

- Immediate response to the food needs of the most vulnerable people affected by this emergency.
- Protection of livelihoods and enhance self-reliance and early recovery of the communities and families affected by this emergency and support the re-establishment of their food and nutrition security.

##### Strategy and proposed activities

This intervention will implement activities through two main components:

Immediate Relief component: Immediate emergency through the distribution of fortified biscuits and general food distribution (GFD) during the first three months of this intervention will help save lives, avoid deterioration of the nutritional status and prevent negative coping mechanisms of the most vulnerable populations, in particular those who have been unable or are unwilling to evacuate to shelters or those which are returning to their devastated communities, once rains and floods subside. Supplementary feeding for children less than five years of age and pregnant and lactating mothers in shelters will also be carried out as a preventive measure to avoid the deterioration of the nutritional status of this vulnerable group and complement food distribution efforts carried out by local and national authorities at this level.

Early Recovery Component: As the situation stabilises, sheltered populations return to their ravaged communities, and isolated communities are rendered accessible over the coming weeks, early recovery activities will be implemented in a proportion of communities that have benefited from GFD under the immediate response component. These activities which on average will last three months, will be used to improve household income and rehabilitation of community infrastructure and agricultural productive capacities through food-for-work (FFW), food-for training (FFT) and food-for-assets (FFA) interventions.

##### Expected outcomes

- 1) Improved food consumption over assistance period for targeted emergency-affected households assisted through general food distribution and blanket supplementary feeding activities.

Indicators: Household food consumption score  
Coping Strategy Index

Output: Food distributed in sufficient quantity and quality to targeted women, men, girls and boys under secure conditions

Indicators: Number of women, men girls and boys receiving food, by category and as % of planned figures  
Tonnage of food distributed, by type, as % of planned distribution  
Quantity of fortified foods, complementary foods and special nutritional products distributed, by type, as % of planned distribution

- 2) Targeted communities assisted through FFW/FFT/FFA activities have increased access to assets.

Indicator: Community Asset Score

Output: Developed, built or restored livelihood assets by targeted affected communities and individuals.

Indicators:       Number of community assets created or restored by targeted communities and individuals  
                       Number of women and men trained in livelihood-support thematic areas

## Projects

<b>Agency</b>	<b>WFP</b>
<b>Project title</b>	<b>Food And Early Recovery Assistance To Populations Affected By Tropical Depression 12e And Ensuing Rains</b> (under Protracted Relief and Recovery Operation (PRRO) – Central America 200043 Title: “Assistance to Vulnerable Groups Affected by Natural Disasters and Other Shocks in Guatemala, Honduras, El Salvador and Nicaragua”
<b>Objective</b>	To meet the immediate needs of food insecure populations in 11 departments affected by Tropical depression 12E and the ensuing rains, in a timely manner to protect their livelihoods, avoid a deterioration of their nutritional status and help their recovery efforts from the devastating impact of this event.
<b>Beneficiaries</b>	78,500
<b>Partners</b>	SIS, Civil Protection Authority, OXFAM, World Lutheran Federation, WVI, CRS, CARE El Salvador, and PLAN
<b>Project code</b>	<b>SLV-11/F/46409/561</b>
<b>Budget (\$)</b>	<b>3,688,600</b>
<b>Agency</b>	<b>OXFAM America</b>
<b>Project title</b>	<b>Cash for Work with affected populations in El Salvador</b>
<b>Objective</b>	To provide food security and livelihoods rehabilitation through cash for work.
<b>Beneficiaries</b>	6,000
<b>Partners</b>	CORDES, FUNDESA, Fundación Salvadoreña para la Reconstrucción y el Desarrollo (REDES), AMS, Asociación MANGLE, CARITAS SONSONATE
<b>Project code</b>	<b>SLV-11/F/46413/7152</b>
<b>Budget (\$)</b>	<b>570,926</b>
<b>Agency</b>	<b>PLAN INTERNATIONAL</b>
<b>Project title</b>	<b>Food Assistance and Livelihood early recovery to the population of La Libertad and Chalatenango departments affected by 12E storm</b>
<b>Objective</b>	To contribute to improve the nutritional status of the vulnerable population affected by the 12E storm by providing basic food assistance
<b>Beneficiaries</b>	9,223
<b>Partners</b>	Community Volunteers, Health promoters, Local Governments
<b>Project code</b>	<b>SLV-11/F/46414/5524</b>
<b>Budget (\$)</b>	<b>132,746</b>
<b>Agency</b>	<b>World Vision International (El Salvador)</b>
<b>Project title</b>	<b>Food Aid to People affected by Depression Tropical 12E, in San Francisco Menendez and Acajutla Municipalities, from the departments of Ahuachapán and Sonsonate</b>
<b>Objective</b>	To guarantee food availability for communities and families affected by Tropical Depression 12 – E, in order to guarantee their food and nutritional safety.
<b>Beneficiaries</b>	2,500
<b>Partners</b>	Mayor’s offices, two World Vision Area Development Programs(Nuevo Renacer and Nuevo Amanecer) Community Development Associations (CDAs), Health Clinics, Municipal Civil Protection
<b>Project code</b>	<b>SLV-11/F/46416/5490</b>
<b>Budget (\$)</b>	<b>100,000</b>
<b>Agency</b>	<b>CARE (El Salvador)</b>
<b>Project title</b>	<b>Food assistance for families affected by 12E in of EL Salvador</b>
<b>Objective</b>	To guarantee an adequate diet for a period of six months to affected families in the department of Usulután, in order to strengthen their productive recuperation
<b>Beneficiaries</b>	7,500
<b>Partners</b>	Municipalities and Community commissions for Civil Protection
<b>Project code</b>	<b>SLV-11/F/46430/15050</b>
<b>Budget (\$)</b>	<b>125,000</b>

---

### 3.2.4 HEALTH

#### LEAD AGENCY: PAHO/WHO

##### Cluster objective

- Ensure access to life-saving primary and secondary health care services for the population affected by the floods and landslides, including for psychosocial support, and detect and prevent occurrence of outbreaks of communicable diseases.

##### Strategy and proposed activities

Taking into consideration the increase in demand for medical care and the difficulty to access most affected areas; emergency health kits will be distributed. The kits are intended for use by primary health care workers with limited training and located in remote areas. Where needed, mobile health services for delivery of primary health care and referral system for emergency surgery and emergency obstetric and child health care will be established. An early warning system for detection, investigation and response to outbreak will be set up. In coordination with WASH partners, special attention will be given to awareness for, and prevention of, and response to waterborne and respiratory diseases in overcrowded and poor living conditions, as well as to the prevention of measles, N1H1, diarrhoea and hepatitis outbreak, among others. Special information, prevention messages and activities also aiming at limiting the risk of leptospirosis outbreak (due to contact with water contaminated by urine of infected rats); and vector borne diseases (in relation with proliferation of mosquito breeding sites as water recedes). Prevention of tetanus will also be ensured for wounded. Needs in terms of mental health and psychosocial support will also be assessed and addressed. In a second phase, actions will be taken to re-establish the primary health network as well as some of the hospitals in the affected areas.

##### Expected Outcomes

1. Continuity of access to primary health care and medications and response to live-threatening conditions for all affected populations.
2. Absence of outbreaks of communicable diseases or outbreaks investigated and responded to within 48 hours from detection.
3. To reduce the public health impact (morbidity and/or mortality) on vulnerable segments of the population, such as, women, elderly and children.
4. Needs for mental health identified and addressed.
5. Effective health sector coordination.

##### Projects

<b>Agency</b>	<b>PAHO</b>
<b>Project title</b>	<b>Epidemiological Surveillance and Disease Control</b>
<b>Objectives</b>	<ul style="list-style-type: none"><li>• To reinforce the capacity of epidemiological surveillance system on outbreak control activities</li><li>• To reduce the possibilities of any outbreak expansion</li><li>• Strengthening the national referral laboratory capabilities</li></ul>
<b>Beneficiaries</b>	100,000
<b>Partners</b>	MINSAL
<b>Project code</b>	<b>SLV-11/H/46433/5497</b>
<b>Budget (\$)</b>	<b>121,000</b>
<b>Agency</b>	<b>PAHO</b>
<b>Project title</b>	<b>Drugs and Medical Supplies Availability and Distribution</b>
<b>Objectives</b>	<ul style="list-style-type: none"><li>• To provide and distribute medicines, medical supplies, intravenous fluids, antibiotics and antiviral drugs to guarantee timely medical/emergency and nutrition</li><li>• To reinforce the capacity of the primary health care services of provide care and treatment to those in more needs</li><li>• To reduce morbidity and mortality at local level</li></ul>
<b>Beneficiaries</b>	50,000 at affected areas
<b>Partners</b>	MINSAL
<b>Project code</b>	<b>SLV-11/H/46438/5497</b>
<b>Budget (\$)</b>	<b>605.000</b>

<b>Agency</b>	<b>UNFPA</b>
<b>Project title</b>	<b>Restore and strengthen the capacity of the local primary health system to provide emergency reproductive health services</b>
<b>Objective</b>	<ul style="list-style-type: none"> <li>• Contribute to the reduction of maternal mortality and morbidity in areas affected by heavy rains, floods and mudslides in mid-October 2011</li> <li>• Prevent and provide care to victims of SGBV.</li> </ul>
<b>Beneficiaries</b>	150,000 people, particularly women and adolescent girls living in shelters and affected areas of the 14 departments of the country (provinces), largely concentrated (73%) in: La Libertad, San Salvador, La Paz, and Usulután. It is estimated that approximately 14,000 are women of reproductive age, and 700 are pregnant women. It is also estimated that 280 may be victims of sexual violence; reports are already coming in of sexual abuse and harassment in shelters.
<b>Partners</b>	PAHO, Joint United Nations Programme on HIV/AIDS (UNAIDS), civil society organizations, local groups, health providers, community organizations
<b>Project code</b>	<b>SLV-11/H/46441/1171</b>
<b>Budget (\$)</b>	<b>226,769</b>
<b>Agency</b>	<b>PAHO</b>
<b>Project title</b>	<b>Mental Health</b>
<b>Objective</b>	Reducing mental health impact on population and including this component into the health sector's needs.
<b>Beneficiaries</b>	50,000 people at affected areas
<b>Partners</b>	MINSAL PLAN, PAHO
<b>Project code</b>	<b>SLV-11/H/46443/5497</b>
<b>Budget (\$)</b>	<b>150,000</b>
<b>Agency</b>	<b>World Vision International (El Salvador)</b>
<b>Project title</b>	<b>Mental Health Care</b>
<b>Objective</b>	To contribute to the restoration of the emotional condition of the families affected by the tropical depression 12E
<b>Beneficiaries</b>	Beneficiaries: 500 families of Francisco Menendez municipality, Cara Sucia hamlet, Garita Palmera and Acajutla municipality, Metalío Hamlet and La Barra de Santiago
<b>Partners</b>	MINSAL, ADESCOS, World Vision Area Development Programs located in the above-mentioned Municipalities.
<b>Project code</b>	<b>SLV-11/H/46444/5490</b>
<b>Budget (\$)</b>	<b>75,000</b>

### 3.2.5 AGRICULTURE

#### Cluster Objectives

Ensuring the immediate and longer-term food security of vulnerable flooding –affected households in rural areas will require a combination of vital life-saving food assistance and urgent support to ensure the rapid and community-driven restoration of vital agricultural production.

Previous experience has demonstrated that ensuring an effective humanitarian response with to the food security needs of flooding-affected households requires an immediate combination of food assistance, rapid agricultural input supplies (seeds, fertilizer, tools, poultry and small ruminants etc.) and urgent restoration of critical production infrastructure. Strong and effective Agriculture Cluster coordination and evidence-based assessments are also essential.”

#### Activities

The implementation of the project will take place in areas affected by the Tropical Depression 12E (La Paz, San Vicente, La Libertad, Usulután).

- Distribution of poultry, poultry feed and animal-housing material to poor households with limited access to land for cultivation.
- Distribution of bean seeds.
- Restore vegetables production

#### Outcomes

- Benefited families will have restored their poultry production.
- Benefited families have re-established the production of short-cycle food crops improving:
  - The availability of bean seed for re-establishing bean production;
  - The availability of proteins through to the production of beans;
- Provision of basic agriculture inputs for backyard gardens, such as vegetable seeds, fertilizers and hand tools.

#### Projects

<b>Agency</b>	<b>CATHOLIC RELIEF SERVICES</b>
<b>Project title</b>	<b>Agricultural Livelihood Recovery for Flood Affected Communities in El Salvador</b>
<b>Objective</b>	To assist flood affected communities in El Salvador to manage the recovery of their agricultural livelihoods and restore food security
<b>Beneficiaries</b>	7,155
<b>Partners</b>	Caritas El Salvador
<b>Project code</b>	<b>SLV-11/A/46419/5146</b>
<b>Budget (\$)</b>	<b>200,000</b>
<b>Agency</b>	<b>LUTHERAN WORLD FEDERATION</b>
<b>Project title</b>	<b>Rehabilitation of living conditions of people affected by Tropical Depression 12E in the Municipalities of Nahuizalco, Santa Catarina Masahuat, Santo Domingo de Guzman and Acajutla in the Department of Sonsonate, El Salvador</b>
<b>Objective</b>	To contribute to the rehabilitation of affected communities and families through activities resulting in the recovery of production, soil conservation and food for the families participating in this process
<b>Beneficiaries</b>	7,200
<b>Partners</b>	Maquilishuatl Foundation
<b>Project code</b>	<b>SLV-11/A/46421/5502</b>
<b>Budget (\$)</b>	<b>350,000</b>
<b>Agency</b>	<b>FAO</b>
<b>Project title</b>	<b>Emergency assistance to small livestock farmers affected by the disaster in La Paz, San Vicente, La Libertad, Usulután</b>
<b>Objective</b>	Restores small livestock holdings capacity through provision of livestock inputs and veterinary kits.
<b>Beneficiaries</b>	TOTAL: 5,000 Children: 3,000 Women: 1,000 Other group (specify): women household
<b>Partners</b>	Save the Children (SC), CARE, WVI, Fundación Intervida, other NGOs, MoA&L.
<b>Project code</b>	<b>SLV-11/A/46445/123</b>
<b>Budget (\$)</b>	<b>278,600</b>

<b>Agency</b>	FAO
<b>Project title</b>	<b>Emergency assistance to restore bean production for vulnerable farmers affected by the disaster, in the in the affect areas of San Vicente, La Paz, La Libertad, and Usulután</b>
<b>Objective</b>	Ensure beans seed availability for staple foods production for vulnerable farmers and contribute to assure income to seed producers
<b>Beneficiaries</b>	TOTAL: 5,000 Children: 3,000 Women: 1,000
<b>Partners</b>	MoA&L, local government, WVI, Fundación Intervida, SC
<b>Project code</b>	<b>SLV-11/A/46449/123</b>
<b>Budget (\$)</b>	<b>333,800</b>
<b>Agency</b>	FAO
<b>Project title</b>	<b>Emergency assistance to restore vegetables' production for vulnerable families in affected areas in the departments of San Vicente, La Paz, La Libertad, and Usulután</b>
<b>Objective</b>	Restore food availability and improve diet diversity in 1,000 affected households.
<b>Beneficiaries</b>	TOTAL: 5,000 Children: 3,000 Women: 1,000
<b>Partners</b>	Local governments, MAG/CENTA, WVI, SC, MoA&L.
<b>Project code</b>	<b>SLV-11/A/46450/123</b>
<b>Budget (\$)</b>	<b>303,000</b>
<b>Agency</b>	<b>World Vision International (El Salvador)</b>
<b>Project title</b>	<b>Facilitating entrepreneur processes for the implementation of alternatives means of living to generate income</b>
<b>Objective</b>	To give response to the families affected by tropical depression 12E by facilitating entrepreneur processes for the implementation of alternatives means of living to generate income.
<b>Beneficiaries</b>	500 families affected by the tropical depression 12E, in the municipalities of San Francisco Menéndez, Acajutla, San Julián, Guaymango, Caluco and Armenia.
<b>Partners</b>	ADESCOS, World Vision Area Development Programs in mentioned municipalities, City Halls, Civil Protection
<b>Project code</b>	<b>SLV-11/A/46451/5490</b>
<b>Budget (\$)</b>	<b>306,000</b>
<b>Agency</b>	<b>UNITED NATIONS DEVELOPMENT PROGRAMME –UNDP</b>
<b>Project title</b>	<b>Emergency Support to farmers and fishermen (families and persons) affected by the Tropical Depression</b>
<b>Objectives</b>	Support emergency income generation and subsistence of families and persons whose rural and agricultural assets have been damaged by the Tropical Depression (emergency restoration of agriculture systems allowing income generation and food security. Provision of an agriculture kit. Emergency rehabilitation of family based agriculture and fisheries productive assets
<b>Beneficiaries</b>	2,000 families (15,000 people)
<b>Partners</b>	MoA&L, Municipalities, FAO, NGOs
<b>Project code</b>	<b>SLV-11/A/46452/776</b>
<b>Budget (\$)</b>	<b>1,000,000</b>

### 3.2.6 EDUCATION

#### LEAD AGENCY: UNICEF

#### Sectoral Objective

- Ensure the education right of children affected by the tropical depression 12E.

#### Activities

- Direct support to educational and psychosocial needs of children that are living in school shelters.
- Facilitate the access and continuity of school for children that live in school shelters or children, whose school has been damaged by providing basic school supplies, recreational and educational equipment, including WASH facilities.
- Ensure training of personnel of institutions involved in the education emergency management, including teachers and caregivers.
- Psychosocial support activities to teachers, families and children that live in school shelters and other learning facilities.
- Advocacy and sensibilization activities for adequate incorporation of psychosocial, gender recreational, hygiene and educational needs during emergencies.

#### Expected Outcomes

- Care, education and recreation activities are carried in selected shelters.
- Education conditions are improved and/or generated in order to fulfil school year.
- Teachers adjusting and implementing education curricula in school shelters and other learning facilities.
- Girls and women aware of gender issues in emergency situations.

#### Projects

<b>Agency</b>	<b>UNICEF</b>
<b>Project title</b>	<b>Coming Back To School With Emphasis In Usulután, La Paz, La Libertad, San Salvador, San Vicente, Sonsonate and Ahuachapán</b>
<b>Objective</b>	Children of the departments mostly affected by floods (Usulután, La Paz, La Libertad, San Salvador, San Vicente, Sonsonate and Ahuachapán) that have been affected by closure of schools return to school in a safe and caring environment within 6 months.
<b>Beneficiaries</b>	175,500 (170,000 Children / 5,500 Teachers)
<b>Partners</b>	MINED, PLAN, Fundación Intervida, Visión Mundial, SC, Oxfam, Ayuda en Acción, CARE, OIKOS, Asociación de Proyectos Comunales de El Salvador (PROCOMES), Glasswing, Centro de Protección para Desastres (CEPRODE), CARITAS, Madre Cría, AOS, FUNAES, Fundación para el Desarrollo Educativo Morazán en Acción (FUNDEMAC) and Centro de Investigación, Desarrollo y Enseñanza de Permacultura (CIDEP).
<b>Project code</b>	<b>SLV-11/E/46453/124</b>
<b>Budget (\$)</b>	<b>480,000</b>
<b>Agency</b>	<b>UNICEF</b>
<b>Project title</b>	<b>Friendly Education Shelters With Emphasis In The Following Affected Departments: Usulután, La Paz, La Libertad, San Salvador, San Vicente, Sonsonate And Ahuachapán</b>
<b>Objective</b>	Affected children in school shelters and most damaged communities have access to adequate learning and recreational environment.
<b>Beneficiaries</b>	32,221 (13,851 Children living in shelters; 7,564 Women; 5,136 Man; 3,100 Teachers; 2,570 Community leaders)
<b>Partners</b>	MINED, PLAN, Fundación Intervida, Visión Mundial, SC, Oxfam, Ayuda en Acción, CARE, OIKOS, PROCOMES, Glasswing, CEPRODE, CARITAS, Madre Cría, AOS, FUNAES, FUNDEMAC and CIDEP.
<b>Project code</b>	<b>SLV-11/E/46454/124</b>
<b>Budget (\$)</b>	<b>360,000</b>

<b>Agency</b>	<b>PLAN INTERNATIONAL</b>
<b>Project title</b>	<b>The Right to Education during Emergencies in El Salvador / San Salvador Sur, La Libertad, and Sonsonate</b>
<b>Objective</b>	Help guarantee the children's return to school
<b>Beneficiaries</b>	1,284 families in the Departments of La Libertad, San Salvador Sur and Sonsonate
<b>Partners</b>	Fundación Intervida, VISION MUNDIAL
<b>Project code</b>	<b>SLV-11/E/46455/5524</b>
<b>Budget (\$)</b>	<b>229,274</b>
<b>Agency</b>	<b>SAVE THE CHILDREN</b>
<b>Project title</b>	<b>Educational&amp; Phsycosocial response in Ahuachapán and La Paz</b>
<b>Objective</b>	<ul style="list-style-type: none"> <li>• Project overall goal is to provide educational spaces for children affected by floods in order to enhance their resilience and understanding of the event, as well as to provide parents with the opportunity –time to engage in rehabilitation actions for their houses and communities or to look for livelihood opportunities while their children are in a safe and friendly space to learn and develop.</li> </ul> <p>Specific objectives:</p> <ol style="list-style-type: none"> <li>1. To promote education as a children right.</li> <li>2. To provide ludic and educational spaces for the stimulation of children development, creativity and stress overcome.</li> </ol> <ul style="list-style-type: none"> <li>• To support children participation and leadership at the same time they learn and promote hygiene and sanitation key practices for their families and communities.</li> </ul>
<b>Beneficiaries</b>	The population affected by the E12 storm, mainly the one living in shelters in the departments of Ahuachapán and La Paz. Ahuachapán 313 families and 1378 inhabitants. La Paz 1810 families and 5528 inhabitants.
<b>Partners</b>	N/A
<b>Project code</b>	<b>SLV-11/E/46456/6079</b>
<b>Budget (\$)</b>	<b>187,338</b>

---

### 3.2.7 PROTECTION AND SECURITY

#### LEAD AGENCY: UNICEF

##### Sectorial objectives

- The attention, prevention and referral of cases of violence, mistreatment, and exploitation of children, women, adolescents and handicapped populations, and guarantee the right to survival and a life of dignity.
- To promote the active participation of women and adolescents in the prevention and attention of gender based violence against children, young and adult women that may occur in shelters and in affected areas.
- Ensure safety and comprehensive protection for women in emergency state, by giving emotional support and implementing self-care techniques

##### Activities

###### Prevention

- Raise awareness amongst parents, children and community leaders at the temporary shelters, as well as those who have been affected but are not in the shelters, about protection risks for children and vulnerable populations, and means of preventing them (e.g. organization of shelters, lighting, preservation of family unity).
- Strengthen existing child protection mechanisms for prevention, detection and response to gender-based violence, child sexual abuse and trafficking.
- Promotion of family unity, and appropriate interim care and family tracing for children separated from their families
- Identification of safe spaces for children and women and support to community-based child protection mechanisms
- Active and coordinated monitoring and documentation of protection concerns, with referral of cases to appropriate services as required

###### Psychosocial attention with a holistic approach

- Providing psychosocial services to children and women especially the primary caregivers with a methodology that combines 3 types of interventions: Child Friendly Spaces or Safe Spaces, Child to Child and Crisis Intervention.
- Providing psychosocial support to adolescents, including training on non-violence communication, conflict resolution
- Support Community mobilization activities with and by the population living in the temporary shelters. Emphasis will be made on children's primary caregivers to prepare them to return to their communities and lives. [Another proven methodology will be used with the participants, this is the "Life project" that SC developed and that has proven to help people to not only react but also be proactive in several areas in their lives.]
- Engaging adolescents and young people in emergency response.

###### Monitoring and Evaluation (M&E)

- A plan for monitoring and evaluation of the Project indicators will be made before the implementation.
- Strategies to promote active and real participation of the beneficiaries and other community key players in M&E processes will be put into place.
- Pre and post evaluations as well as the monitoring process will be conducted on a timely manner.

##### Expected outcomes

- Children, women, adolescents and handicapped populations in the shelters are protected from violence, abuse, mistreatment, and exploitation

- Children, women and adolescents applying pro-actively actions, for their security and protection and articulate effort with volunteers organizations, NGO's, local and national authorities responsible to protect their rights
- Improve the respect to the rights of adolescents (particularly girls) and women and their participation in decision making processes.

## Projects

<b>Agency</b>	<b>UNICEF</b>
<b>Project title</b>	<b>Protection of women and children's rights in state of emergency</b>
<b>Objective</b>	Promote the enforcement of the rights of children, adolescents and women in emergency situations and minimize the psychosocial impact, ensuring safety and comprehensive protection, by giving emotional support and implementing self-care techniques. Prevent violence in shelters and empower children, adolescents and women to safeguard themselves against violence.
<b>Beneficiaries</b>	9,000 (6,500 Children; 2,500 Women)
<b>Partners</b>	Instituto Salvadoreño para el Desarrollo de la Mujer (ISDEMU), Salvadoran Institute for Integral Development of Children and Adolescents (ISNA) and Fondo Solidario para la Salud (FOSALUD)
<b>Project code</b>	<b>SLV-11/P-HR-RL/46457/124</b>
<b>Budget (\$)</b>	<b>400,506</b>
<b>Agency</b>	<b>UNICEF</b>
<b>Project title</b>	<b>Emergency protection for children</b>
<b>Objectives</b>	<ul style="list-style-type: none"> <li>• Promote the enforcement of the rights of children, adolescents and women in emergency situations and minimize the psychosocial impact, ensuring safety and comprehensive protection, by giving emotional support and implementing self-care techniques.</li> <li>• Prevent violence in shelters and empower children, adolescents and women to safeguard themselves against violence.</li> </ul>
<b>Beneficiaries</b>	2,680 (782 Children; 636 youngster; 716 Women; 546 Men)
<b>Partners</b>	Member organizations, estate institutions and free partnership.
<b>Project code</b>	<b>SLV-11/P-HR-RL/46458/124</b>
<b>Budget (\$)</b>	<b>249,325</b>
<b>Agency</b>	<b>UNICEF</b>
<b>Project title</b>	<b>Integrated protection for girls, boys and women in Temporary shelters located in, en Jiquilisco, Usulután.</b>
<b>Objective</b>	<ul style="list-style-type: none"> <li>• Promote the enforcement of the rights of children, adolescents and women in emergency situations and minimize the psychosocial impact, ensuring safety and comprehensive protection, by giving emotional support and implementing self-care techniques.</li> <li>• Prevent violence in shelters and empower children, adolescents and women to safeguard themselves against violence.</li> </ul>
<b>Beneficiaries</b>	1,366 (869 Children; 497 Women; 17 Others)
<b>Partners</b>	Member organizations, estate institutions and free partnership.
<b>Project code</b>	<b>SLV-11/P-HR-RL/46459/124</b>
<b>Budget (\$)</b>	<b>165,425</b>
<b>Agency</b>	<b>UNICEF</b>
<b>Project title</b>	<b>Children and women, advocates for their protection and safety in the Municipalities: San Francisco Menéndez, Jujutla, Guaymango, department of Ahuachapán. Municipalities: Caluco, San Julián, Santa Isabel Ishuatán and Cuisnahuat Armenia Canton Metalio department of Sonsonate</b>
<b>Objectives</b>	Promote the enforcement of the rights of children, adolescents and women in emergency situations and minimize the psychosocial impact, ensuring safety and comprehensive protection, by giving emotional support and implementing self-care techniques. Prevent violence in shelters and empower children, adolescents and women to safeguard themselves against violence.
<b>Beneficiaries</b>	11,333 (869 Children; 497 Women; 17 Others)
<b>Partners</b>	The implementation of this project will be developed with the coordination at the local, communal, departmental and national level with social stakeholders, government institutions, NGOs, ADESCOS, churches and area development programs (ADPs) of World Vision.
<b>Project code</b>	<b>SLV-11/P-HR-RL/46461/124</b>
<b>Budget (\$)</b>	<b>169,010</b>

## 4. ROLES AND RESPONSIBILITIES

The national response is led by the General Direction of Civil Protection coordinates the National System for Civil Protection, Prevention and Mitigation of Disasters. The system articulates the sectors and specialized institutions, which are supported during emergencies by the Operation Department in charge of the Emergency Operation Center (EOC). At sub-national level, there are Civil Protection Commissions in all departments, and most of the municipalities.

In the EOC there are Technical Commissions where state sectors coordinate with national and international NGOs, civil society organizations and UN agencies.

National Technical Commission	Lead
Shelter (collective centers included)	Home Office (Ministerio de Gobernacion)
Health (including water and sanitation)	Ministry of Public Health and Social Assistance
Security	Ministry of Security
Logistics (distributing food and NFIs)	WFP and the Government
Infrastructure	Ministry of Public Works
Technical and Scientific	National Service of Territorial Studies (SNET)
Emergency Services	Home Office (Ministerio de Gobernacion)

Since not all the traditional humanitarian sectors were present within the National Technical Commissions, and some were not of interest in the immediate response, the government and the humanitarian partners decided in November 2009 following hurricane Ida to define sectorial coordination arrangements as follows:

Cluster	Cluster/sector lead	Governmental responsible institution	Other humanitarian stakeholders
Food Assistance	World Food Programme (WFP)	Social Inclusion Secretary	Oxfam, WVI, Plan International, Catholic Relief Services, World Lutheran Federation (WLF), CARE
Collective Centers / Emergency Shelter	International Office of Migrations (IOM) / International Federation of the Red Cross and Crescent Societies	Deputy Home Office ("Vice-Ministerio de Gobernación")	CARE, SC, PLAN, WVI, WLF, CONAMUS (National Commission of Salvadorian Women)
Protection	UNICEF	Deputy Home Office ("Vice-Ministerio de Gobernación") Social Inclusion Secretary	National and international NGOs, other UN agencies
Health	PAHO/WHO	Ministry of Public Health and Social Assistance	National and international NGOs, other UN agencies
WASH	PAHO/WHO	Ministry of Public Health and Social Assistance	National and international NGOs, other UN agencies
Education	UNICEF	MINED	WVI, PLAN, Fundación Intervida, SC, Oxfam, Ayuda en Accion, CARE, OIKOS, PROOMES; Glasswing, CEPRODE; Caritas, Madre Cria, AOS, FUNAES, FUNDEMAC, CIDEP
Agriculture	FAO	MoA&L	SC, CARE, WVI, Fundación Intervida

The sectors/clusters are designed to support the national commission, particularly in coordinating the international humanitarian partners' response.

Some commissions groups are completely integrated (shelter, health and WASH). Other groups are led by international partners (Education, Protection and Agriculture). The above-mentioned sectors of technical-scientific, emergencies services, security, infrastructure and logistics encompass functions covered only by the Government.

Upon declaration of emergency, most humanitarian partners gathered as a HCT as a first step in coordinating their response in line with the strategic national orientation. It is the main forum for strategic and policy discussions among international actors on how to support and complement the government's efforts to respond to the emergency. An interagency technical group coordinated by the

---

UN Emergency Technical Team (UNETE) is also gathering sectorial information, planning joint interagency assessment missions and responding to the emergency. UNETE has managed inter-cluster functions by the above-mentioned cluster leads. The HCT ensures that cross-cutting issues are fully incorporated into its strategic response planning and activities. All national technical sectorial commissions have met and discussed priorities with humanitarian partners in order to elaborate funding proposal and operational response.

For this emergency, the humanitarian country team has not requested any additional global support from the clusters leads since regional partners immediately deployed in support to the coordination of national technical commissions. This included a regional coordinator team for shelter (IFRC with support from UNHABITAT and IOM), agriculture (FAO) and health (PAHO). In addition, several emergency officers deployed to support the national response. Hence, in a spirit of subsidiarity, the sectorial response is being supported from the regional clusters.

In order to ensure a smooth transition to early rehabilitation, the Presidential Technical Secretary of the government and the United Nations Resident Coordination (UNRC) decided on 19 October to set up a Committee of follow-up for the Flash Appeal implementation including the United Nations and its partners, the Ministry of Foreign Affairs, Civil Protection and the Technical Secretary of the Presidency.

## ANNEX I. LIST OF PROJECTS

### Projects Grouped by Cluster/Sector

El Salvador Flash Appeal – October 2011  
as of 23 October 2011  
<http://fts.unocha.org>

Compiled by OCHA on the basis of information provided by appealing organizations.

Project code	Title	Appealing agency	Requirements (\$)
<b>AGRICULTURE</b>			
SLV-11/A/46419/5146	Agricultural Livelihood Recovery for Flood Affected Communities in El Salvador	CRS	200,000
SLV-11/A/46421/5502	Rehabilitation of living conditions of people affected by Tropical Depression 12E in the Municipalities of Nahuizalco, Santa Catarina Masahuat, Santo Domingo de Guzman and Acajutla in the Department of Sonsonate, El Salvador	LWF	350,000
SLV-11/A/46445/123	Emergency assistance to small livestock farmers affected by the disaster in La Paz, San Vicente, La Libertad, Usulután	FAO	278,600
SLV-11/A/46449/123	Emergency assistance to restore bean production for vulnerable farmers affected by the disaster, in the in the affect areas of San Vicente, La Paz, La Libertad, and Usulután	FAO	333,800
SLV-11/A/46450/123	Emergency assistance to restore vegetables' production for vulnerable families in affected areas in the departments of San Vicente, La Paz, La Libertad, and Usulután	FAO	303,000
SLV-11/A/46451/5490	Facilitating entrepreneur processes for the implementation of alternatives means of living to generate income.	WVI (El Salvador)	306,000
SLV-11/A/46452/776	Emergency Support to farmers and fishermen (families and persons) affected by the Tropical Depression	UNDP	1,000,000
<b>Sub total for AGRICULTURE</b>			<b>2,771,400</b>
<b>EDUCATION</b>			
SLV-11/E/46453/124	Coming Back To School With Emphasis In Usulután, La Paz, La Libertad, San Salvador, San Vicente, Sonsonate and Ahuachapan	UNICEF	480,000
SLV-11/E/46454/124	Friendly Education Shelters With Emphasis In The Following Affected Departments: Usulután, La Paz, La Libertad, San Salvador, San Vicente, Sonsonate And Ahuachapan	UNICEF	360,000
SLV-11/E/46455/5524	The Right to Education during Emergencies in El Salvador / San Salvador Sur, La Libertad, and Sonsonate	Plan	229,274
SLV-11/E/46456/6079	Educational & Phsycosocial response in Ahuachapan and La Paz	SC	187,338
<b>Sub total for EDUCATION</b>			<b>1,256,612</b>

<b>FOOD ASSISTANCE</b>			
SLV-11/F/46409/561	Food And Early Recovery Assistance To Populations Affected By Tropical Depression 12e And Ensuing Rains (under Protracted Relief and Recovery Operation (PRRO) – Central America 200043 Title: “Assistance to Vulnerable Groups Affected by Natural Disasters and Other Shocks in Guatemala, Honduras, El Salvador and Nicaragua”	WFP	3,688,600
SLV-11/F/46413/7152	Cash for Work with affected populations in El Salvador	Oxfam America	570,926
SLV-11/F/46414/5524	Food Assistance and Livelihood early recovery to the population of La Libertad and Chalatenango departments affected by 12E storm	Plan	132,746
SLV-11/F/46416/5490	Food Aid to People affected by Depression Tropical 12E, in San Francisco Menendez and Acajutla Municipalities, from the departments of Ahuachapan and Sonsonate	WVI (El Salvador)	100,000
SLV-11/F/46430/15050	Food assistance for families affected by 12E in EL Salvador	CARE El Salvador	125,000
<b>Sub total for FOOD ASSISTANCE</b>			<b>4,617,272</b>
<b>HEALTH</b>			
SLV-11/H/46433/5497	Epidemiological Surveillance and Disease Control	PAHO (WHO)	121,000
SLV-11/H/46438/5497	Drugs and Medical Supplies Availability and Distribution	PAHO (WHO)	605,000
SLV-11/H/46441/1171	Restore and strengthen the capacity of the local primary health system to provide emergency reproductive health services	UNFPA	226,769
SLV-11/H/46443/5497	Mental Health	PAHO (WHO)	150,000
SLV-11/H/46444/5490	Mental Health Care	WVI (El Salvador)	75,000
<b>Sub total for HEALTH</b>			<b>1,177,769</b>
<b>PROTECTION and SECURITY</b>			
SLV-11/P-HR-RL/46457/124	Protection of women and children's rights in state of emergency	UNICEF	400,506
SLV-11/P-HR-RL/46458/124	Emergency protection for children	UNICEF	249,325
SLV-11/P-HR-RL/46459/124	Integrated protection for girls, boys and women in Temporary shelters located in en Jiquilisco , Usulután.	UNICEF	165,425
SLV-11/P-HR-RL/46461/124	Children and women, advocates for their protection and safety in the Municipalities: San Francisco Menéndez, Jujutla, Guaymango, department of Ahuachapán. Municipalities: Caluco, San Julián, Santa Isabel Ishuatán and Cuisnahuat Armenia Canton Metalio department of Sonsonate	UNICEF	169,010
<b>Sub total for PROTECTION and SECURITY</b>			<b>984,266</b>

<b>SHELTER</b>			
SLV-11/S-NF/46310/298	Continued assistance to families residing in Collective Centers (NFIs) Hygiene Kits, Comfort Kits / Departments of Usulután, Sonsonate, Ahuachapán, La Paz, La Libertad.	IOM	400,000
SLV-11/S-NF/46340/298	Collective Center Management: ensuring proper accommodation and attending to cross-cutting issues in 75 shelters / Usulután, Sonsonate, Ahuachapán, La Paz, La Libertad	IOM	700,000
SLV-11/S-NF/46351/298	Support reintegration for 1000 families whose houses have suffered minimal damage: Shelter Kits and Cleaning Kits / Usulután, Sonsonate, Ahuachapán, La Paz, La Libertad	IOM	600,000
SLV-11/S-NF/46358/124	Provision of NFIs and assistance	UNICEF	355,000
SLV-11/S-NF/46365/5490	Immediate assistance to affected families for returning to their own houses and communities	WVI (EI Salvador)	700,000
<b>Sub total for SHELTER</b>			<b>2,755,000</b>
<b>WATER, SANITATION and HEALTH</b>			
SLV-11/WS/46368/5497	Improve safe drinking water and sanitation conditions	PAHO (WHO)	680,000
SLV-11/WS/46382/124	WASH Interventions for rains and floods affected population in EI Salvador	UNICEF	567,100
SLV-11/WS/46389/13206	Re-establish sanitation for families affected by storm in Sonsonate and Usulután EI Salvador	Fundación Seraphim	171,142
SLV-11/WS/46392/7152	Water and Sanitation	Oxfam America	573,651
SLV-11/WS/46393/5490	Water and sanitation	WVI (EI Salvador)	110,000
SLV-11/WS/46406/5490	Hygiene and Sanitation Promotion	WVI (EI Salvador)	100,000
<b>Sub total for WATER, SANITATION and HEALTH</b>			<b>2,201,893</b>
<b>Grand Total</b>			<b>15,764,212</b>


---

## ANNEX II. IFRC PRELIMINARY EMERGENCY APPEAL

www.ifrc.org  
Saving lives,  
changing minds.

# Preliminary emergency appeal

## El Salvador: Floods

 International Federation  
of Red Cross and Red Crescent Societies

---

**Preliminary emergency appeal n° MDRSV00**  
**GLIDE n° [TC-2011-000157-SLV](#)**  
**21 October 2011**

---

This Preliminary Emergency Appeal seeks 1,185,025 Swiss francs in cash, kind, or services to support the Salvadoran Red Cross Society (SRCS) to assist 2,000 families (10,000 persons) for 9 months; the operation will be completed by the end of June 2012. A Final Report will be made available by the end of September 2012.



**Volunteers of the Salvadoran Red Cross Society (SRCS) are working alongside the government to evacuate families living in flooded or at-risk areas. Source: SRCS**

191,129 Swiss francs were allocated from the International Federation of Red Cross and Red Crescent

(IFRC)'s Disaster Relief Emergency Fund (DREF) to support this operation. Unearmarked funds to replenish the DREF are encouraged.

As the case in several countries in Central America, on 10 October El Salvador started to feel the effects of Tropical Depression 12E which has brought over 900mm of rain, surpassing the levels reached by Hurricane Mitch in 1998. With some 200,000 persons affected by flooding and landslides and more than 60,000 persons in collective centres, the government of El Salvador has declared a state of emergency and called for international assistance. Based on the situation, this Preliminary Emergency Appeal responds to a request from the Salvadoran Red Cross Society, and focuses on providing support to ensure an appropriate and timely response in delivering assistance to 2,000 families with relief distributions, emergency health, water and sanitation, shelter and early recovery. It also includes strengthening the National Society's capacities in logistics, evacuations and first aid care efforts.

---

## Coordination and partnerships

The Civil Protection System coordinates the inter-institutional efforts focused on response and recovery through its Emergency Operations Centre (COE). The EOC facilitates the participation of all the institutions involved in the response, including different government ministries working in disaster management. Several working groups have been set up for the different technical sectors, such as logistics, shelter, water and sanitation and health, and are coordinating efforts from the local to the national level through community, municipal and departmental commissions.

A national coordination mechanism through United Nations agencies, the International Organization for Migration (IOM) and government counterparts has been established. The National Society and an IFRC delegate in country are in constant communication with the United Nations Office for the Coordination of Humanitarian Affairs (OCHA), IOM and the European Commission Humanitarian Aid and Civil Protection Office (ECHO). The United Nations Disaster Management Team (UNDMT) will request funds through the Cash Emergency Grant (CEG), the Central Emergency Response Funds (CERF) and a Flash Appeal, and will support damage and needs assessments, while different agencies of the system are also supporting with relief items. The Pan-American Health Organization (PAHO) has deployed two representatives to support the emergency response.



The IFRC is assessing the possibility of providing support for shelter coordination, information management and technical support. IFRC has previous experience in this area in the country, during the Hurricane Ida emergency in 2009.

## Red Cross and Red Crescent action

The Salvadoran Red Cross Society, as part of the Civil Protection System, activated its 56 branches and more than 900 volunteers. As part of the response, the National Society is currently supporting evacuation efforts, as well as search and rescue activities, damage assessments, and has started the distribution of relief items to the affected population.

- Monitoring of the emergency: since the declaration of a green alert on 7 October, the headquarters of the SRCS has been in constant communication with all branches, gathering information on community affectation and local capacities.
- Evacuation, search and rescue: the National Society is supporting preventive evacuations of some 5,000 persons in the coastal areas of Usulután, La Paz, La Libertad, Sonsonate and Ahuachapán. In coordination with the Civil Protection System, collective centres were selected and established.
- Distribution of relief items: the SRCS utilized prepositioned stock to reach families taking refuge in collective centres. The National Society has distributed 5,032 blankets, 2,649 mattresses, 1,174 hygiene kits, 2,859 food parcels and safe drinking water.
- Preliminary damage and needs assessments: four teams have been deployed to carry out assessments in Ahuachapán, La Paz and Usulután first and foremost, followed by the departments of La Libertad and Sonsonate. As the water has yet to recede in many areas, the assessments are preliminary; however, they indicate that the most affected priority areas could be Ahuachapán, La Paz and Sonsonate.
- Coordination: The SRCS is actively involved with the national coordination mechanism and conducts daily meetings with Partner National Societies (PNS) in country, including the Spanish Red Cross and the Swiss Red Cross. Constant coordination is also ongoing with the American Red Cross and the Finnish Red Cross, and the American Red Cross will support the Plan of Action of the National Society with assistance for 800 families and a delegate. The Canadian

Red Cross is in contact with the IFRC to provide support as required. Coordination is ensured with the IFRC to develop an integrated plan of action and the IFRC's Pan-American Disaster Response Unit (PADRU) has also coordinated a meeting with different PNSs and other partners.

- At the moment, the National Society's overall Plan of Action seeks to cover 5,000 families across the country.

## The needs

**Immediate needs:** At present, the immediate needs identified include:

1. Evacuation of the population in flooded areas or high-risk locations to safer areas.
2. Food, safe water, mats, hygiene kits, kitchen sets and blankets for families in collective centres.

**Medium and Longer-term needs:** once flood waters recede, there will be a need to recover lost crops and fishing equipment, to rehabilitate homes and communities' water and sanitation systems, and to ensure that water-borne and vector-transmitted diseases do not significantly increase.

The Salvadoran Red Cross Society is basing its beneficiary selection on the Fundamental Principles of the International Red Cross and Red Crescent Movement, prioritizing the most vulnerable people and communities. This operation will benefit 2,000 families (10,000 people). Details of the proposed actions are provided below in the respective objectives. Information on the specific communities to be reached will be provided in the next update once more detailed assessments are completed. However, the communities will be from the most affected departments of Ahuachapán, Sonsonate, La Libertad, La Paz, Usulután and San Vicente.

At the institutional level, the National Society is in need of equipment to conduct search and rescue activities, provide first aid and ensure the safety of their volunteers, as well as telecommunication equipment.

## The proposed operation

The Salvadoran Red Cross Society's operation in response to Tropical Depression 12E will provide 2,000 families (10,000 people) with food and non-food relief items, emergency health care, shelter, water, sanitation and hygiene promotion, as well as consumables for early recovery of livelihoods. Special attention will be given to the most vulnerable households, including those with young children, elderly adults and families otherwise additionally challenged. Based on the information obtained by the National Society's volunteers in the field and supplemented with the government's data, this operation will focus on these interrelated priority areas which complement and/or further actions by State institutions and other actors in the affected regions.

<b>Relief distributions (food and basic non-food items)</b>	
<b>Outcome: The immediate needs of 2,000 families living in collective centres are met through the distribution of relief items.</b>	
<b>Outputs</b>	<b>Activities planned</b>
<b>2,000 families living in collective centres will receive blankets, mats/mattresses, food parcels.</b>	<ul style="list-style-type: none"> <li>• Develop beneficiary targeting strategy and registration system to deliver intended assistance in the collective centres.</li> <li>• Identify priority families.</li> <li>• Develop a distribution plan.</li> <li>• Procure and distribute relief items (blankets and mats) in collective centres.</li> <li>• Replenish relief items distributed.</li> <li>• Monitor the relief activities and provide reporting on distributions.</li> </ul>

Thousands of families have been evacuated to collective centres after the flooding. In many cases these families do not have appropriate bedding, thus mats/mattresses and bed linen will be distributed to the families which are most in need. In addition, up to 2,000 families will receive a one-month food package.

The contents of the food parcels are as follows:

Food Parcels	
Item	Quantity (in pounds)
Rice	30
Sugar	10
Corn flour	30
Incaparina <sup>2</sup>	22
Salt	2
Beans	30
Oil	1 gallon

The Salvadoran Red Cross Society is supporting collective centres and has commenced relief distributions. Thus far, the National Society, as a result of prepositioned stock, has reached families in collective centres with 5,032 blankets, 2,649 mattresses, 1,174 hygiene kits, 2,859 food parcels and safe drinking water.

Shelter	
Outcome: The immediate shelter and settlement needs of the target population are met in the most affected municipalities.	
Outputs	Activities planned
<p><b>2,000 families are assisted with cleaning kits.</b></p> <p><b>400 families are assisted with essential shelter-related items and technical assistance.</b></p> <p><b>Basic rehabilitation of 10 collective centres is carried out</b></p> <p><b>10 community trainings on house rehabilitation are completed.</b></p>	<ul style="list-style-type: none"> <li>• Coordinate with local authorities and community leaders to assess shelter needs and preferred assistance to be provided, as well as to select the beneficiary families and identify priority collective centres to be rehabilitated.</li> <li>• Promote increased awareness and understanding of safe shelter.</li> <li>• Conduct shelter reinforcement trainings.</li> <li>• Enable the provision of means for households to recover or reach safe and adequate locally appropriate solutions.</li> <li>• Identify and enable the provision of means to improve living conditions in collective centres.</li> <li>• Provide technical assistance to most vulnerable households.</li> </ul>

As the rains continue, flooded areas are increasing and evacuations of persons continue. The numbers of families in collective centres and with families and friends are rapidly growing and their needs are still being assessed. As of 19 October, there are 566 collective centres sheltering some 60,000 persons. The number of persons currently living with friends and family needs to be determined; however, is estimated that 200,000 persons had to evacuate their homes. Efforts will be carried out to also reach these families living outside collective centres, for instance through host families support.

The SRCS is currently coordinating with the Ministry of Housing to determine the appropriate support and specific lines of actions; however possible interventions could be, on the one hand, the distribution

<sup>2</sup> A protein-rich dietary supplement

of tools and cleaning kits to support rehabilitations of homes to enable the return of families. The National Society is analyzing the feasibility of conducting this activity through a cash transfer programme. On the other hand, the National Society is considering strengthening the capacity of communities to improve conditions of collective centres. The IFRC will provide technical support as required by the National Society.

While the need for additional support for interagency sector coordination is still being discussed in country, there may be a need for IFRC to deploy dedicated coordination capacity. Although fully funded personnel will be sought from interested National Societies, additional funding may be required to cover the running costs of this service and the government liaison role for the National Society. This would be reflected in any revision of this Appeal.

<b>Emergency health and care</b>	
<b>Outcome: the health risks in the emergency affected population are reduced in the medium and long term through a strategy based on community health promotion</b>	
<b>Outputs</b>	<b>Activities planned</b>
<p><b>Community-based disease prevention and health promotion is provided to 2,000 families (10,000 people)</b></p> <p><b>Selected affected groups and communities receive psychosocial support to increase their resilience and coping mechanisms.</b></p> <p><b>The capacity of the volunteers to respond to health needs is strengthened.</b></p>	<ul style="list-style-type: none"> <li>• Ensure the development and maintenance of inter-institutional coordination.</li> <li>• Assess the health situation within the affected population in coordination with the established national mechanism.</li> <li>• Provide first aid care to the affected population</li> <li>• Train health National Intervention Teams through the Epidemic Control for Volunteers (ECV) tool kit.</li> <li>• Implement educational activities to prevent health risk at the community level.</li> <li>• Review and update inventories of equipment and medical supplies.</li> <li>• Conduct vector control activities to targeted affected groups in communities.</li> <li>• Train SRCS volunteers in community based psychosocial support and psychological first aid.</li> <li>• Provide psychosocial support to targeted affected groups in communities, collective centres and to SRCS volunteers.</li> <li>• Conduct community-based health first aid training for volunteers (CBHFA)</li> <li>• Implement educational activities at the community level to promote behavioural change related to health care.</li> <li>• Monitor, evaluate and provide reporting on activities.</li> </ul>

The SRCS’s Plan of Action seeks to responds to needs on different levels in an effort to address medium to long term needs. Firstly, as volunteers support the evacuation efforts of the government, first aid care is being provided. Secondly, National Intervention Team (NIT) health members will be trained using the Epidemic Control for Volunteers (ECV) tool kit. These NITs will be able to better support the educational and promotional campaigns with the affected families in an effort to reduce health risks.

In addition, volunteers will be trained on methods to provide psychosocial support to strengthen resilience and coping mechanisms of family members and National Society’s volunteers. Finally, the SRCS will seek a longer term approach by training volunteers in the community-based health first aid methodology and implementing community-based activities to promote behavioural change related to health care.

### Water, sanitation, and hygiene promotion

**Outcome: The risk of waterborne and water related diseases is reduced through the provision of safe water, adequate sanitation as well as hygiene promotion within the population affected by Tropical Depression E-12.**

Outputs	Activities planned
<p><b>Access to safe water is provided to 2,000 families as damaged systems are restored.</b></p> <p><b>2,000 families receive hygiene kits.</b></p> <p><b>2,000 families are reached through hygiene promotion and sanitation activities.</b></p> <p><b>5 communities are benefited with micro-projects to rehabilitate water and sanitation infrastructures.</b></p>	<ul style="list-style-type: none"> <li>• Assess the existing coverage of water supply and select the most vulnerable families in coordination with the established national mechanism.</li> <li>• Distribute safe water to families in collective centres (through water trucking and/or water filters).</li> <li>• Clean 300 wells and establish community water wells committees.</li> <li>• Support well management activities and training at the community level.</li> <li>• Distribute hygiene kits and water filters.</li> <li>• Review and update educational materials on safe water, sanitation and hygiene promotion.</li> <li>• Complete micro-projects to repair community water and sanitation infrastructures.</li> <li>• Conduct sanitation and hygiene promotion campaigns.</li> <li>• Print and distribute educational materials.</li> <li>• Support the cleaning of living spaces.</li> <li>• Conduct monitoring and evaluation of activities.</li> </ul>

In an effort to ensure access to safe drinking water, the National Society proposes a twofold strategy. First, as new collective centres are rapidly set up, the SRCS has assessed the need to support affected families residing in these centres with water trucking during the first days of the emergency. However, to ensure a longer term solution, particularly as some 2,222 wells were affected by floods, the SRCS will distribute household water filters and will carry out cleaning of wells. In an effort to support the sustainability of the wells, the National Society will establish water wells committees and provide them with equipment and technical support. Trainings on the appropriate use and maintenance of household water filters will also be conducted

In addition, once the results from assessments become clearer, the National Society contemplates the possibility of carrying out small projects to rehabilitate community sanitation facilities such as rehabilitation of latrines.

### Livelihoods

**Outcome: Contribute to the early recovery of 400 families who have lost their livelihoods as a result of the floods.**

Outputs	Activities planned
<p><b>400 families receive technical and material support to recover their agricultural production and/or fishing activities.</b></p>	<ul style="list-style-type: none"> <li>• Research and develop a technical assessment and intervention strategy.</li> <li>• Establish mutual collaboration agreements with national institutions (agricultural associations, cooperatives and/or NGOs).</li> <li>• Provide technical support.</li> <li>• Distribute kits or cash-transfer / vouchers for agricultural and/or fishing endeavours.</li> <li>• Conduct monitoring and evaluation activities.</li> </ul>

Although, detailed information on the level of affectation of livelihoods remains to be gathered, the Ministry of Agriculture, based on information from 14 October, reports almost 1,500 hectares of affected food crops, particularly of corn and beans. The SRCS will therefore develop an intervention

strategy to ensure families are able to continue their productive activities. One possible intervention is the development of a cash transfer programme to distribute kits designed to ensure affected families have the necessary means to restart their agricultural production or fishing activities. The kits could include items such as fertilizers, seeds and tools.

<b>Logistics</b>	
<b>Outcome: The local logistics capacity of the Salvadoran Red Cross Society to respond is strengthened with technical support for procurement and distribution.</b>	
<b>Outputs</b>	<b>Activities planned</b>
<b>Enhanced logistics capacity is achieved and technical support facilitates the procurement and distribution of relief items.</b>	<ul style="list-style-type: none"> <li>• Purchase of non-food items by the Regional Logistics Unit (RLU).</li> <li>• Procure transport services (light vehicle) through the RLU transport network.</li> <li>• Deploy a logistics IFRC staff to support warehouse management if required.</li> <li>• Maintain the level of stock in El Salvador sub-regional warehouse to meet required demand from the National Society.</li> </ul>

The Regional Logistics Unit has the primary task of providing additional logistics capacity by:

- Assessment of logistics infrastructure, setting-up an efficient logistic system and identifying the best supply chain to support the operation.
- Carrying out receipt of relief goods shipped by air and sea and arranging transportation to distribution points.
- Liaison and coordination with other key actors to ensure best uses of all information.

<b>Capacity of National Society</b>	
<b>Outcome: The capacity of the SRCS to support search, rescue and first aid care, as well as evacuations in flooded and at-risk areas is strengthened.</b>	
<b>Outputs</b>	<b>Activities planned</b>
<p><b>At least 100 volunteers have the equipment necessary to safely support evacuations.</b></p> <p><b>People living in high-risk areas are evacuated to safer locations by the SRCS in coordination with different humanitarian actors.</b></p>	<ul style="list-style-type: none"> <li>• Provide equipment (20 first aid kits and 100 personal protection kits) to volunteers.</li> <li>• Mobilize SRCS volunteers, rescue workers and lifeguards to the affected areas.</li> <li>• Conduct search and rescue activities in coordination with the Civil Protection System authorities.</li> <li>• Monitor the population at risk at the national level focusing on possible landslides and rising river levels.</li> <li>• Mobilize evacuees to collective centres.</li> <li>• Provide logistic support to field activities (vehicles, motor boats, radio equipment and rescue material).</li> <li>• Provide Sphere training.</li> <li>• Monitoring and reporting of activities.</li> </ul>

The National Society is working through 56 branches and has mobilized some 900 volunteers in response to the emergency alongside government authorities. However, as rains are forecasted to continue and the situation continues to deteriorate, the National Society will need to strengthen the capacity of some of the local and departmental branches in order to continue supporting search, rescue and first aid care, as well as evacuations in flooded and at-risk areas. Therefore, the National Society will procure 20 first aid kits and personal safety equipment for 100 volunteers.

Finally, the SRCS is currently assessing the needs of the branches in affected areas in order to determine if further assistance will be needed to strengthen their capacity. Strengthening

---

preparedness and response DRM department capacities for future events will also be taken into account.

### **Communications – Advocacy and Public information**

In an effort to maintain a steady flow of timely and accurate information in regards to the emergency situation developing in the country, the National Society's communications department has undertaken several activities. Firstly, the communications team has developed 20 press releases that have been shared with local and regional media as well as some international media. In order to collaborate with the fundraising carried out by resource mobilization, the department has also coordinated eight press conferences to date. The effort has helped mobilize donations and collaboration with donors from the corporate and public sectors within the country. In addition, Red Cross communications staff has helped coordinate field visits for media to the most affected areas in El Salvador, in many cases providing transportation to journalists via Red Cross vehicles. The SRCS has coordinated closely with the IFRC's American zone office to share information and has also shared this information with the communication departments of the national agencies responding to the disaster. The communications department is also supporting the EOC in reviewing Situation Reports and has been providing information for their website. Nonetheless, limitations exist as to the effective use of communication in supporting the emergency response, particularly related to outdated equipment that slows down the process of recording, monitoring and sharing the information. In an effort to counteract the challenge of limited personnel and equipment, the National Society has hired professional photographers to accompany field activities. The Emergency Appeal will therefore support the procurement of equipment to strengthen the capacity of the communications department.

### **Capacity of the IFRC**

The IFRC's Pan American Disaster Response Unit (PADRU) and the regional representation for Central America and Mexico continue to maintain constant communication with the Salvadoran Red Cross Society. In addition, an IFRC delegate is in El Salvador supporting this operation, and staff in the region are ready to provide needed assistance as requested by the National Society.

Additionally, PADRU and the Regional Logistics Unit will continue to provide technical support, including tendering and purchasing processes within country. This support could include human, material and technical support for all of the objectives as needed. Finally, a Regional Intervention Team alert has been sent to select possible members for deployment, if required. The attached budget makes provision for human resources (delegate) support for this operation.

### **Budget summary**

See attached budget (Annex 1) for details.

Mathias Schmale  
Under Secretary General  
Programme Services Division

Bekele Geleta  
Secretary General

---

## Contact information

**For further information specifically related to this operation please contact:**

- **In the Salvadoran Red Cross Society:** Roy Venegas, disaster management and risk reduction national director; phone: +503 778.72238; email: [roy.venegas@cruzrojasal.org.sv](mailto:roy.venegas@cruzrojasal.org.sv)
- IFRC Regional Representation: name; office phone; mobile phone; email:
- **IFRC regional representation for Central America and Mexico in Costa Rica:** Fabricio Lopez, regional representative for Central America and Mexico; email: [fabricio.lopez@ifrc.org](mailto:fabricio.lopez@ifrc.org)
- **IFRC Americas zone office in Panama, phone: +507 317.3050**
  - Jorge Zequeira, PADRU coordinator; email: [jorge.zequeira@ifrc.org](mailto:jorge.zequeira@ifrc.org)
  - Douglas Baquero, regional logistics coordinator; email: [douglas.baquero@ifrc.org](mailto:douglas.baquero@ifrc.org)
  - Jane Grimshaw; PMER manager; email: [jane.grimshaw@ifrc.org](mailto:jane.grimshaw@ifrc.org)
- **In Geneva:** Pablo Medina, operations quality assurance senior officer; phone: + 41.22.730.4381; fax: + 41.22.733.0395; email: [pablo.medina@ifrc.org](mailto:pablo.medina@ifrc.org)

**For Resource Mobilization and Pledges:**

- **In IFRC Zone:** Zuleyka Maynard, resource mobilization senior officer; email: [zuleika.maynard@ifrc.org](mailto:zuleika.maynard@ifrc.org); phone: (507) 66 732 026.

---

Click here

1. **Emergency Appeal budget and map [below](#)**
2. **Click [here](#) to return to the title page**

## How we work

All IFRC assistance seeks to adhere to the Code of Conduct for the International Red Cross and Red Crescent Movement and Non-Governmental Organizations (NGO's) in Disaster Relief and the Humanitarian Charter and Minimum Standards in Disaster Response (Sphere) in delivering assistance to the most vulnerable.

The IFRC's vision is to inspire, encourage, facilitate and promote at all times all forms of humanitarian activities by National Societies, with a view to preventing and alleviating human suffering, and thereby contributing to the maintenance and promotion of human dignity and peace in the world.

[www.ifrc.org](http://www.ifrc.org)  
Saving lives, changing minds.



The IFRC's work is guided by Strategy 2020 which puts forward three strategic aims:

1. Save lives, protect livelihoods, and strengthen recovery from disaster and crises.
2. Enable healthy and safe living.
3. Promote social inclusion and a culture of non-violence and peace.

---

### ANNEX III. ACRONYMS AND ABBREVIATIONS

ADESCOS	Communal Development Association
ADP	Area development programs
AECID	<i>Agencia Española de Cooperación Internacional a Desarrollo</i>
AH1N1	Hemagglutinin Type 1 and Neuraminidase Type 1 (aka swine flu)
AMS	<i>Asociación para la Autodeterminación y Desarrollo de la Mujer Salvadoreña</i>
CAP	Consolidated Appeal Process
CARE	Cooperative for Assistance and Relief Everywhere
CDA	Community Development Associations
CEG	Cash Emergency Grant
CEPRODE	<i>Centro de Protección para Desastres</i>
CERF	Central Emergency Response Fund
CHF	Common Humanitarian Fund
CIDEP	<i>Centro de Investigación, Desarrollo y Enseñanza de Permacultura</i>
CNRR	National Committee of Rehabilitation and Reconstruction
CONAMUS	<i>Coordinadora Nacional de la Mujer Salvadoreña</i>
CORDES	<i>Association for Communal Cooperation and Development of El Salvador</i>
CRF	Chronic Renal Failure
CRS	Catholic Relief Services
DM	Diabetes mellitus
DREF	Disaster Relief Emergency Fund
ECHO	European Commission Humanitarian Aid Office
EOC	Emergency Operation Center
FAO	Food and Agriculture Organization
FFA	Food-for-assets
FFT	Food-for-training
FFW	Food-for-Work
FOSALUD	<i>Fondo Solidario para la Salud</i>
FUNDEMAC	<i>Fundación para el Desarrollo Educativo Morazán en Acción</i>
FUNDESA	<i>Fundación para el desarrollo</i>
GBV	Gender based violence
GDP	gross domestic product
GFD	General Food Distribution
HCT	Humanitarian Country Team
HDI	Human Development Index
HDR	Human Development Report
HIV/AIDS	Human immune-deficiency virus / acquired immune deficiency syndrome
HTA	Hipertension Arterial
IASC	Inter-Agency Standing Committee
IPDs	internally displaced people
IFRC	International Federation of Red Cross and Red Crescent Societies
IOM	International Organization for Migration
ISDEMU	<i>Instituto Salvadoreño para el Desarrollo de la Mujer</i>
ISNA	Salvadoran Institute for Integral Development of Children and Adolescents
JMP	Joint Monitoring Programme
km <sup>2</sup>	square kilometres
M&E	Monitoring and Evaluation
MAG/CENTA	<i>Centro Nacional de Tecnología Agropecuaria y Foresta</i>
MARN	Ministry of Environment and Natural Resources

---

MDG	Millennium Development Goal
MICS	Multiple Indicator Cluster Surveys
MINED	Ministry of Education
MINSAL	Ministry of Health
MoA&L	Ministry of Agriculture and Livestock
N1H1	hemagglutinin type 1 and neuraminidase type 1 (influenza virus)
NFI	Non-food items
NGO	Non-Governmental Organizations
OCHA	Office for the Coordination of Humanitarian Affairs
Oxfam	Oxford Committee for Famine Relief
PAHO	Pan-American Health Organization
PLAN	Plan International
PPE	Personal Protective Equipment
PROCOMES	<i>Asociación de Proyectos Comunes de El Salvador</i>
PRRO	<i>Protracted Relief and Recovery Operation</i>
REDES	<i>Fundación Salvadoreña para la Reconstrucción y el Desarrollo</i>
SGBV	sexual gender based violence
SIS	Secretariat of Social Inclusion
SNET	National Service of Territorial Studies Salvadoran Red Cross Society
SRCS	
UNAIDS	Joint United Nations Programme on HIV/AIDS
UNDMT	United Nations Disaster Management Team
UNDP	United Nations Development Programme
UNETE	United Nations Emergency Technical Team
UNFPA	United Nations Population Fund
UNHABITAT	United Nations Human Settlements Programme
UNICEF	United Nations Children's Fund United Nations Resident Coordination
UNRC	
WASH	water, sanitation and hygiene
WFP	World Food Programme
WHO	World Health Organization
WSPA	World Society for the Protection of Animals

## Consolidated Appeal Process (CAP)

The CAP is a tool for aid organisations to jointly plan, coordinate, implement and monitor their response to disasters and emergencies, and to appeal for funds together instead of competitively.

It is the forum for developing a strategic approach to humanitarian action, focusing on close cooperation between host governments, donors, non-governmental organisations (NGOs), the International Red Cross and Red Crescent Movement, International Organization for Migration (IOM), and United Nations agencies. As such, it presents a snapshot of the situation and response plans, and is an inclusive and coordinated programme cycle of:

- Strategic planning leading to a Common Humanitarian Action Plan (CHAP);
- Resource mobilisation leading to a Consolidated Appeal or a Flash Appeal;
- Coordinated programme implementation;
- Joint monitoring and evaluation;
- Revision, if necessary;
- Reporting on results.

The CHAP is the core of the CAP – a strategic plan for humanitarian response in a given country or region, including the following elements:

- A common analysis of the context in which humanitarian action takes place;
- An assessment of needs;
- Best, worst, and most likely scenarios;
- A clear statement of longer-term objectives and goals;
- Prioritised response plans, including a detailed mapping of projects to cover all needs;
- A framework for monitoring the strategy and revising it if necessary.

The CHAP is the core of a Consolidated Appeal or, when crises break out or natural disasters strike, a Flash Appeal. Under the leadership of the Humanitarian Coordinator, and in consultation with host Governments and donors, the CHAP is developed at the field level by the Humanitarian Country Team. This team includes IASC members and standing invitees (UN agencies, the International Organisation for Migration, the International Red Cross and Red Crescent Movement, and NGOs that belong to ICVA, Interaction, or SCHR), but non-IASC members, such as national NGOs, can also be included.

The Humanitarian Coordinator is responsible for the annual preparation of the consolidated appeal document. The document is launched globally near the end of each year to enhance advocacy and resource mobilisation. An update, known as the Mid-Year Review, is presented to donors the following July.

Donors generally fund appealing agencies directly in response to project proposals listed in appeals. The **Financial Tracking Service (FTS)**, managed by the United Nations Office for the Coordination of Humanitarian Affairs (OCHA), is a database of appeal funding needs and worldwide donor contributions, and can be found on [www.reliefweb.int/fts](http://www.reliefweb.int/fts).

***In sum, the CAP is how aid agencies join forces to provide people in need the best available protection and assistance, on time.***

**OFFICE FOR THE COORDINATION OF HUMANITARIAN AFFAIRS  
(OCHA)**

**UNITED NATIONS  
NEW YORK, N.Y. 10017**

**USA**

**PALAIS DES NATIONS  
1211 GENEVA 10**

**SWITZERLAND**