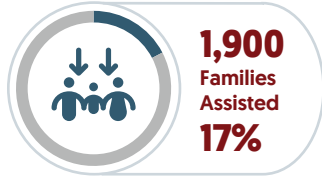
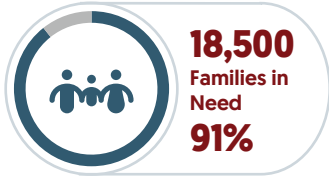


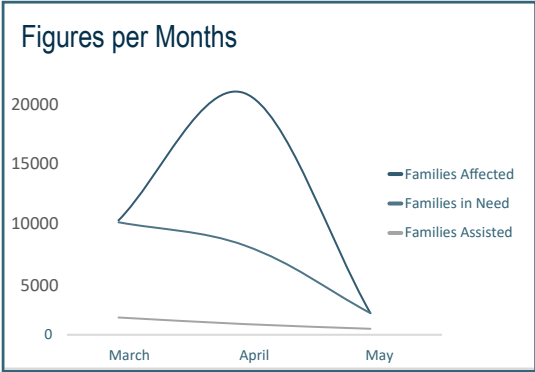
33,000
Families Affected (Reported)

11,000
Families Affected (Verified)



17
Governorates Impacted

74
Districts Impacted



Activy Level Needs and Response

Distribution of Non-Food Items



Distribution of Emergency Shelter Kits



Provision of Shelter Maintenance and Upgrade

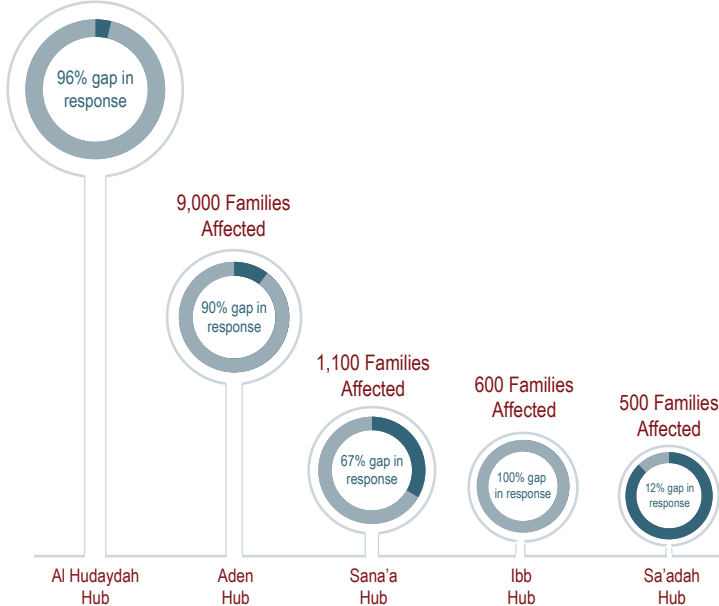


Provision of Flood Mitigation Solutions



Hub Level Figures

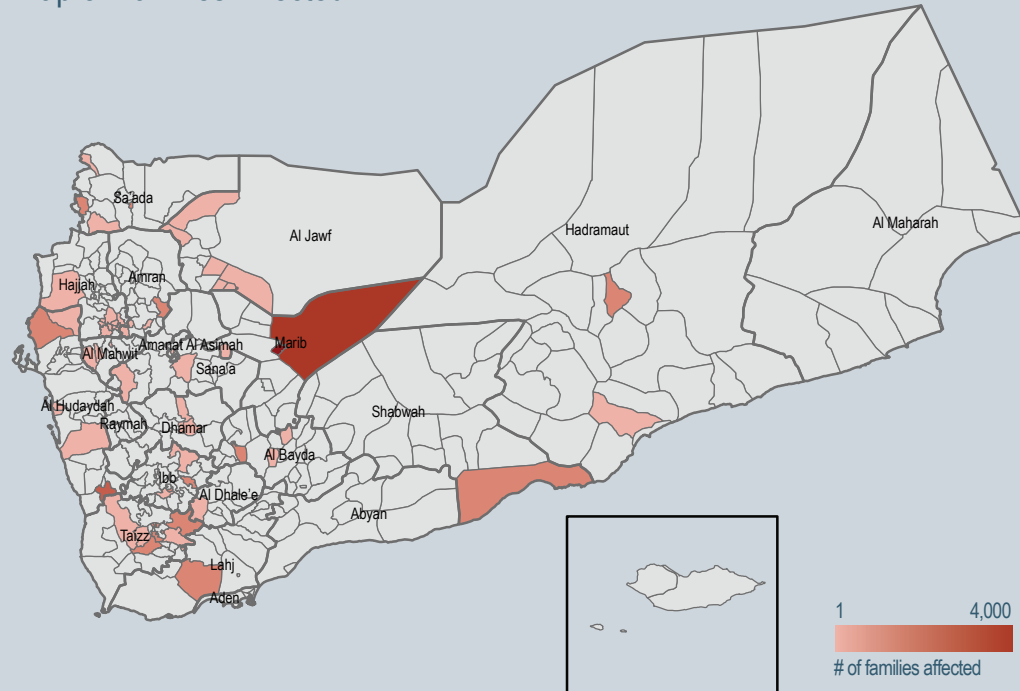
20,300 Families Affected



Governorate Level Figures

Governorate	Families Affected	Families in Need	Families Assisted	Partner Provided the Response
Al Bayda	315	315	265	YRCS
Al Hudaydah	1,134	520	101	
Al Jawf	270	270	252	YRCS
Amanat Al Asimah	6	6	-	
Amran	256	256	98	YRCS
Dharmar	515	515	-	
Hadramaut	509	509	-	
Hajjah	19,775	7,181	168	
Ibb	424	299	-	BCHR
Lahj	132	132	-	
Marib	6,753	6,730	833	YRCS, UNHCR (SHS)
Sa'ada	229	129	98	DRC, YDF
Sana'a	42	42	16	YRCS
Taizz	1,197	1,162	68	IOM, NRC, YRCS
Al Mahwit	135	135	18	
Shabwah	300	300	-	
Al Dhale'e	42	42	-	

Map of Families Affected



Partners Provided Flood Mitigation Support and Response

