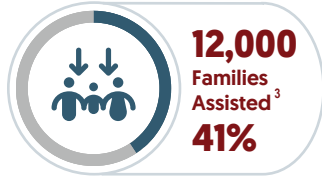
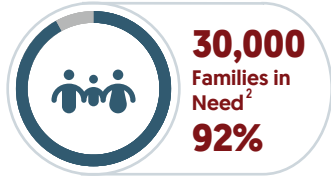


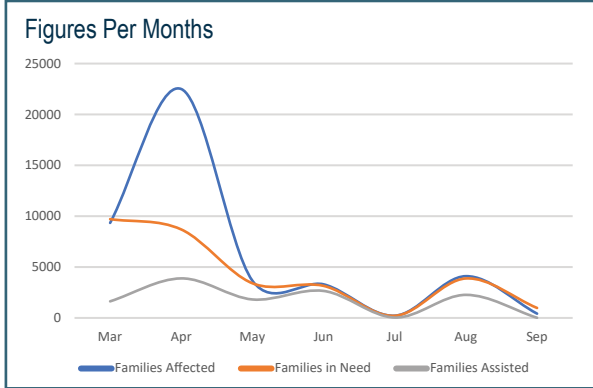
44,000
Families Affected (Reported)¹

33,000
Families Affected (Assessed)

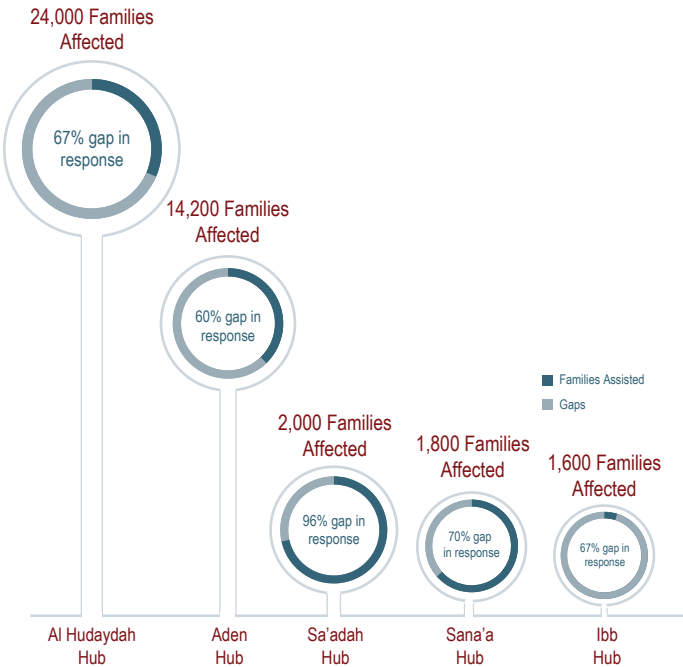


19
Governorates Impacted

111
Districts Impacted



Hub Level Figures



Governorate Level Figures

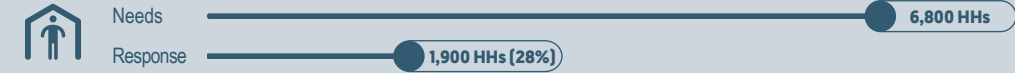
Governorate	Families Affected	Families in Need	Families Assisted	Partners Provided Response
Aden	39	25	25	BCHR
Al Bayda	776	776	726	YRCS
Al Dhale'e	99	94	30	YRCS
Al Hudaydah	1,903	1,254	824	BFD, DRC, IOM, YRCS
Al Jawf	282	282	175	YARD, YRCS
Al Maharah	19	19	19	YRCS
Al Mahwit	1,076	1,076	609	DRC, NRC, NDEO, YRCS
Amanat Al Asimah	225	104	86	YRCS
Amran	492	492	334	NRC, YRCS
Dhamar	823	823	309	YRCS
Hadramaut	661	602	97	BCHR, YRCS
Hajjah	22,581	9,416	3,754	DRC, RADF, NRC, YGUWSSP, YRCS
Ibb	1,205	1,141	53	DEEM
Lahj	132	132	60	YRCS
Marib	9,503	9,577	3,680	SHS, YRCS
Sa'ada	1,503	1,035	711	SC, DRC, YRCS, YDF
Sana'a	89	89	79	YGUSWP, YRCS
Shabwah	300	300	100	YRC
Socotra	60	60	60	BCHR
Taizz	2,349	2,764	512	DEEM, IOM, NMO, NRC, YCO, YRC, UNHCR

Activity Level Needs and Response

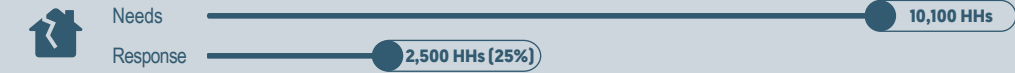
Distribution of Non-Food Items



Distribution of Emergency Shelter Kits



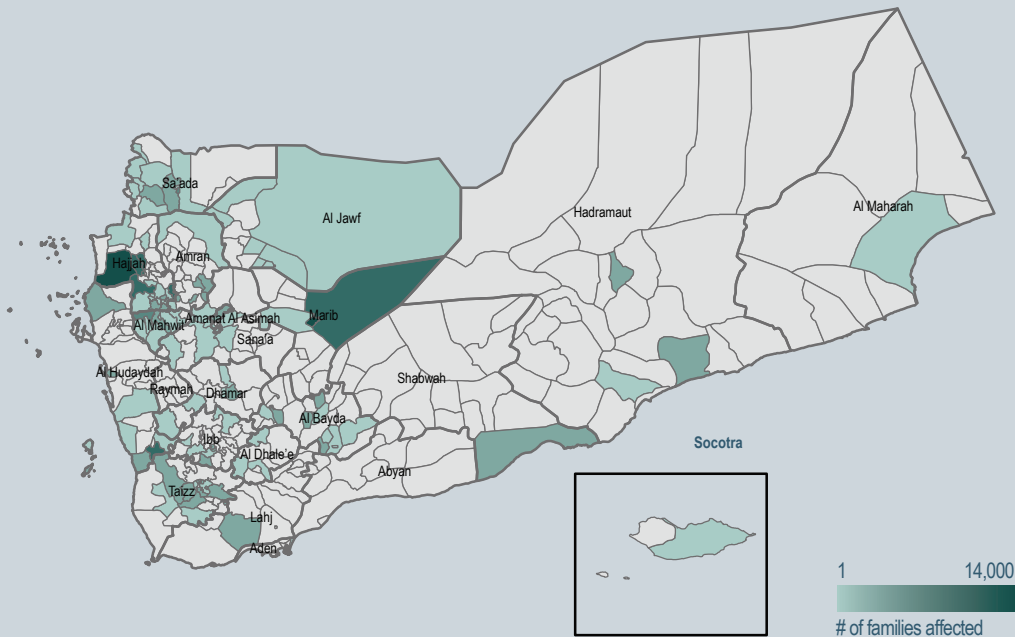
Provision of Shelter Maintenance and Upgrade



Provision of Flood Mitigation Solutions



Map of Families Affected



Notes

1. Assessment of affected families is ongoing
2. The Majority of needs are Non-Food items
3. There are other flood responses ongoing and will be reflected in the next update.

Partners Provided Flood Mitigation Support and Response

