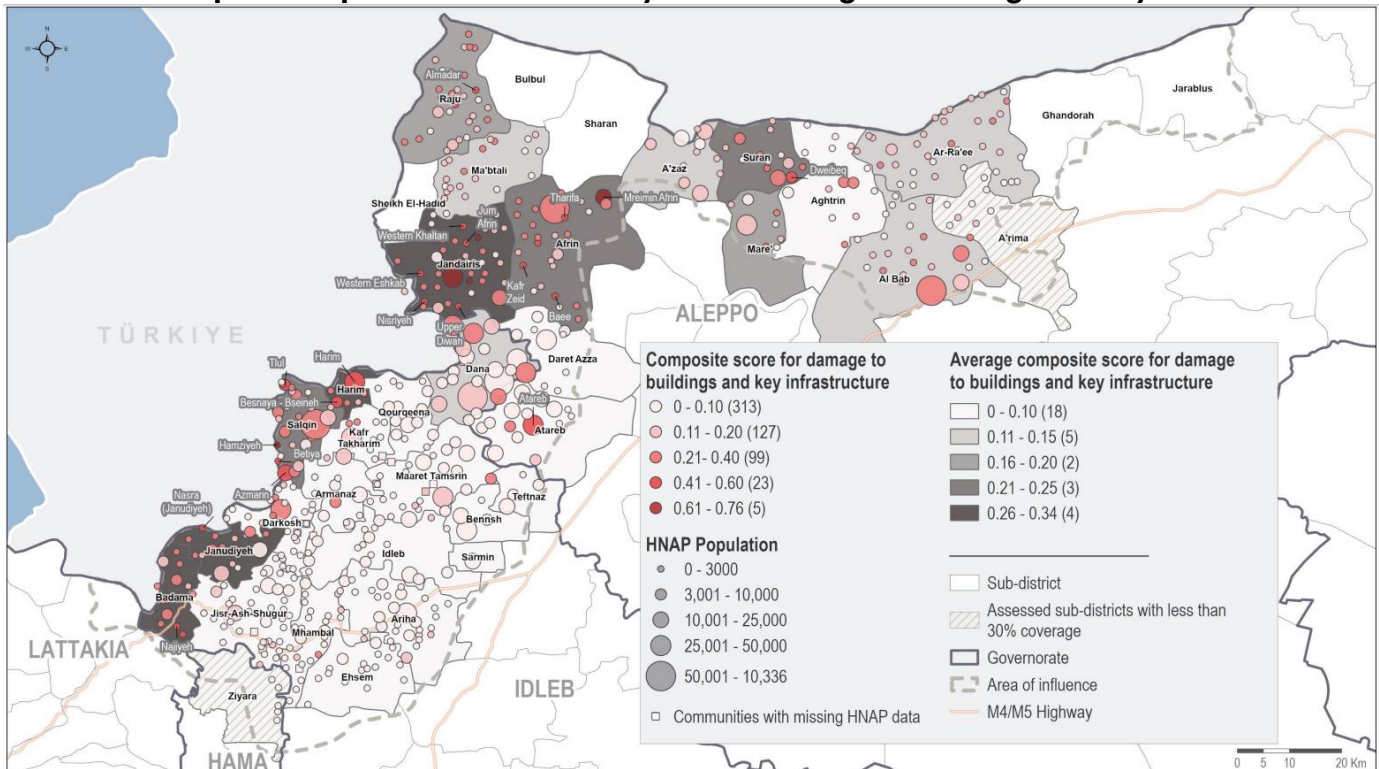


Syria earthquakes 2023

REACH - Earthquake Response RNA 15 February 2023 - Damage to Buildings and Key Infrastructure



Composite score of KI damage estimates for residential buildings and key types of infrastructure - This score combines information on the level of damage of key infrastructure. Specifically, residential buildings, markets, health facilities, water networks/ wells, roads, electricity networks, telecommunications/ internet infrastructure, and education facilities are included. Residential buildings, markets, health facilities, water networks/ wells, and roads are weighted twice as highly. A score of 0 indicates that no infrastructure was damaged while a score of 1 indicates that all infrastructure was completely destroyed.

SITUATION OVERVIEW:

The earthquakes that struck Syria and Türkiye on 6th February 2023 have caused thousands of casualties in both countries. In the case of Syria, the North-West area has been the most affected in terms of casualties, widespread damage and destruction of buildings, including many buildings that have been partially destroyed. The Shelter Cluster and its partners are continuing to work on damage and needs assessments in the most affected areas and they are also providing first line response to the affected population. As organizations and their staff are affected themselves, both on the Syrian and Turkish side of the border, communication channels have been temporarily disrupted.

As of 17th February, close to 4,400 deaths and more than 7,900 injuries have been reported in Syria and the numbers are expected to continue to rise and many people remain trapped under the rubble of collapsed buildings. **Reports indicate that 1,700 buildings have been completely destroyed and more than 6,300 buildings have been partially damaged.**

Overall, 170 sub-districts in 43 districts in ten governorates have been impacted by the earthquakes. The most affected areas include Aleppo Governorate where 4.2 million people have been affected to varying degrees. Almost 3 million people in Idleb Governorate have also been affected. The districts with the highest number of death and injuries are Harim, followed by Afrin and Jebel Saman.

The damage to critical infrastructure, including urban gas, electricity, and water systems, are still being assessed. The collapse of Al Taloul dam in Syria in the northern countryside of Idleb, combined with the rising water levels of the Orontes River, has already resulted in flooding in Al Taloul village.

The Global Shelter Cluster has deployed one Roving Cluster Coordinator to Gaziantep and a dedicated remote Roving IMO, with backup from GSC team globally.

NEEDS:

Thousands of families are without shelter sleeping in open areas, or seeking refuge in damaged buildings, existing IDP sites, reception centers, collective centers, or being temporarily hosted by other families. Freezing temperatures, snowfall and heavy rain further threatens life and health, particularly in children, elderly and people with pre-existing vulnerabilities.

Based on preliminary data and associated assumptions, the Shelter and Non-Food Items (SNFI) sector estimates that approximately 5,375,783 people have been affected by the earthquake and are in need of SNFI assistance, ranging from minor repair through to life-saving SNFI interventions for those displaced from collapsed buildings. Of those affected, the SNFI sector estimates that approximately 894,523 people are in urgent need of humanitarian SNFI assistance. Through the Flash Appeal, the SNFI sector aims to target approximately 509,000 people.

NWS XB Hub (from REACH Rapid Needs Assessment from February 15)

85% of communities were reportedly directly impacted by the earthquake or by new IDP arrivals

55,000 households estimated as displaced, either within or between assessed communities

40,000 households reportedly displaced within their own communities (13,000 of which were in Salquin sub-district)

50,000 households estimated in need of emergency shelter in 225 communities through KIs

88,000 households estimated in need of mattresses, high thermal blankets and clothing as reported in 240 communities through KIs

15,000 new IDP households reportedly arrived in assessed communities between the first earthquake and data collection. 69% are hosted for free by friends and relatives, 13% residing in functioning tents, 4% in vehicles, 2% in unfinished or damaged buildings.

3% of buildings in assessed communities (456) are completely destroyed

10% severely damaged

11% with major damage and 31% with minor damage

Local authorities cite shelter as the main need, with interviews of a selected number of the affected population confirming shelter needs are amongst the top priorities, along with multi-purpose cash and NFIs (including winterization items such as fuel and warm clothes).

KEY FIGURES (from [Flash Appeal launched 14th February](#))

5,375,783 people estimated affected by the earthquake

894,523 people estimated in need of urgent SNFI assistance

509,000 people targeted in the Flash Appeal

51,9 M USD requested in the Flash Appeal

SHELTER AND NFI RESPONSE:

North-West Syria Cross Border Hub - Idleb/Aleppo:

Since 8th February, in North-West Syria, cluster partners have reported the establishment and/or assistance to reception centers in various communities with tents and NFIs. Fuel and single NFI items especially providing protection against the cold weather conditions like blankets, mattresses and tarpaulins have been distributed as available. Furthermore, tents were installed in existing IDP sites to temporarily shelter the affected population. The SNFI cluster is currently tracking the response through an online coordination tool and a Skype Coordination group. Currently, around 15 organizations have ongoing response and the number is expected to increase. As of 20th February, the following progress has been reported by the NWS XB hub partners:

NW Syria XB Hub Response - # of individuals					
	NFI Kits	Kitchen set	Heater	Tent	Shelter Kit
Completed	65,035	27,310	2,625	16,435	4,700
Planned or ongoing	18,560	9,160	--	2,850	8,905

Main targeted locations on Sub-District level are: Jandaris, Dana, Atareb, Maaret Tamsrin, Harim and Idleb.

Syria Hub - Aleppo

To date, the rapid structural assessment was undertaken in 4,159 buildings and classified 169 buildings as 'high risk of collapse' and 644 as 'medium risk of collapse'. UNMAS (United Nations Mine Action Service) is marking the buildings which are categorized as high risk of collapse with aim to dissuade people from returning to them.

Sub-national coordinators are coordinating with shelter partners to assign collective centres (identified by local authorities) for adaptation for displaced families. So far, GOPA, PUI, SIF, AAH and DRC have undertaken structural assessment and are at various stages of mobilizing resources intended for adaptation works.

Partners are waiting for a comprehensive list from local authorities on official designation of collective centres, so that structural assessment of these centres can be done.

UNRWA is providing emergency NFI assistance to 286 Palestine refugee families displaced in Aleppo staying in either in collective shelters or hosting arrangements.

Syria Hub - Tartous & Lattakia

UNDP, along with UNHCR, are working closely with local authorities on a Shelter Damage Assessment with an aim to map the severity of damages and prepare short, medium, and long-term rehabilitation plans for the damaged buildings

UNRWA's engineering team completed the inspection of damage to buildings, infrastructure and rehabilitation works are expected to begin soon.

SARC (supported by UNHCR) distributed 269 NFI kits in four collective shelters in Al-Ramel Al-Junoubi.

Syria Hub - Homs/ Hama

Al-Amal Association in Hama rented 35 apartments for a period of one year aimed at hosting families from Arbaeen neighbourhood in Hama city. Rental agreements were signed in the presence of the municipality and the families began moving into these apartments. SARC (supported by UNHCR) has provided emergency NFIs to these families.

To date, NRC has provided 104 children clothing kits in three collective centres – two in Hama and one in Homs

Syria Hub Response - # of individuals (Aleppo, Tartous, Lattakia, Homs and Hama)			
	NFI Kits (# individuals)	Collective Center Shelter Assistance (# individuals)	# of buildings assessed
Completed	14,789	455	645

KEY MESSAGES:

The Flash Appeal aims to cover an initial period of three months from February to May 2023 and complements the 2022-2023 Syria Humanitarian Response Plan (HRP). Even prior to the earthquakes, the humanitarian response has faced significant and chronic underfunding. All clusters covering north-west Syria were underfunded by the end of 2022 and 48 per cent response funding gap was identified in the last quarter.

Planning and costing for critical longer-term interventions including shelter rehabilitation, and the role of cash approaches in the process, are underway and are important to ensure dignified living conditions are prioritised as a goal of the response.

Considering the significant efforts and progress that have been made within NWS in the recent year to break the emergency response cycle and shift to more dignified shelter solutions, it is a concern for the cluster that the response might end up with tents being the main solution provided. It is important that more dignified shelters, cash for shelter and shelter rehabilitation is planned as early as possible.

CHALLENGES:

Access to affected areas remains a key challenge, with debris and infrastructure damage preventing essential humanitarian aid delivery. This is exacerbated by extremely cold and wet conditions, that have prevented access to some affected areas. Additionally, until the opening of 2 new crossing points on the Turkish-Syrian border on the 16th February, the arrival of humanitarian goods only through one point hampered the humanitarian response.

Insufficient machinery for debris removal, specifically in NW Syria.

Risk of market capacity being depleted due to the high demand on shelter and NFI items and the suppliers' logistics constraints.

COORDINATION:

The shelter and NFI response in Syria is coordinated by Whole of Syria Shelter and NFI sector, itself divided into two hubs: NW Syria Cross Border Hub and Syria Hub.

All the information about the coordination of the Earthquake shelter response is available in: [Syria 2023 Earthquakes Shelter Cluster website](#)

WoS Shelter and NFI Sector: [website](#) | Syria Hub: [website](#) | NW Syria XB Hub: [website](#)

CONTACT DETAILS:

Bobbie Baker, WoS Shelter and NFI Sector Coordinator. UNHCR. bakerb@unhcr.org

Samir Kheir, WoS Shelter and NFI Sector IMO. UNHCR. im2.wos@sheltercluster.org

Alexander Reigber, NWS XB Hub Cluster Support Officer. UNHCR. reigber@unhcr.org

Fredrika Moberg, NWS XB Hub Reporting Officer. UNHCR. moberg@unhcr.org

Mohammed Alamir, NWS XB Hub Cluster Co-Chair. Care International. coord.turkey@sheltercluster.org