

Shelter Severity Classification

A SIMPLE, ROBUST AND TRANSPARENT APPROACH FOR SHELTER NEEDS ANALYSIS

The Shelter Severity Classification (SSC) was launched in May 2023 in response to a recognized need to improve and standardize the way in which the severity of shelter needs is measured across shelter responses, to improve evidence-based decision-making, and, in turn, advocacy and funding for the sector.





It follows other initiatives in the humanitarian sector such as the IPC, WSC and JIAF. As such, the SSC standardizes the approach to measuring the severity of shelter needs, for a comprehensive understanding of the shelter situation in a particular humanitarian context.

The SSC methodology has specific objectives:

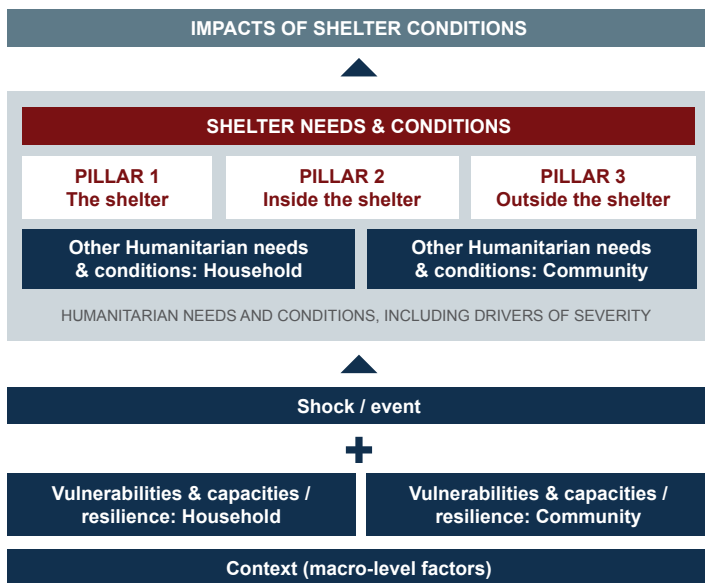
1. Undertake a context analysis relating to the scope and intersectoral analysis resulting from the parallel process of JIAF implementation
2. Assess the severity of shelter needs and determine the Population in Need (PiN) per administrative unit (unit of analysis).
3. Identify potential factors contributing to shelter severity and PiN, thereby understanding the potential consequences of unmet shelter needs.

SSC COMPONENTS

The SSC process is carried out through a mix of qualitative and quantitative data analysis and is based on four core components:

-  **1 | The framework** maps out factors and dimensions about the context that can be considered to determine the severity of shelter needs.
-  **2 | The severity phases** outline what it means, conceptually, to be in level 1 (minimal), 2 (stressed), 3 (crisis), 4 (critical), or 5 (catastrophic) severity regarding shelter needs.
-  **3 | The pillars & core indicators** correspond to the minimum information required to estimate the severity of shelter needs for households and to calculate the PiN.
-  **4 | The calculation model** lays out how to, in practice, generate severity scores and the PiN, by linking the core indicators with data collected through needs assessments.

THE FRAMEWORK



- Shelter needs and conditions, categorized within three essential pillars, aim to comprehensively address core components of the right to adequate housing, aligning with Sphere standards to the fullest extent possible, considering the data available in humanitarian contexts.
- Contributing factors, encompassing vulnerabilities, capacities, resilience, shocks or events, and humanitarian needs and conditions
- The impacts of shelter conditions represent potential outcomes resulting from unaddressed shelter needs and conditions.

How do the SSC analytical framework and severity phases fit within the JIAF?

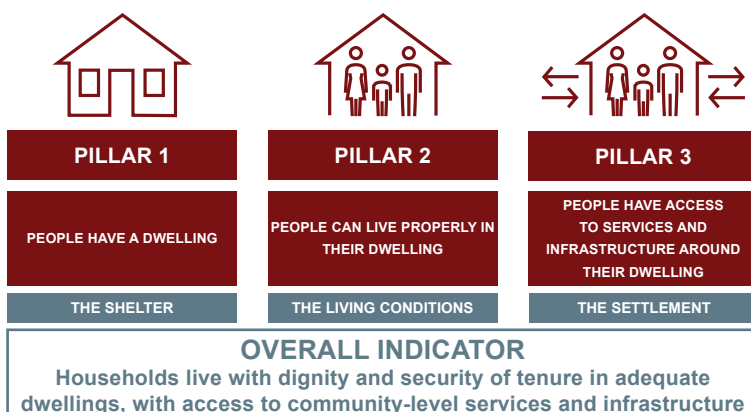
While the SSC framework was developed independently of the JIAF, it shares a similar underlying logic. Notably, the severity phases and their definitions are standardized in both the SSC and JIAF 2.0 severity tools. These definitions remain consistent and should not be contextualized. However, the indicators and calculation models can be customized at the country level to account for specific contextual factors.

It's worth noting that SSC estimates the Population in Need (PiN) figures based on household-level severity of shelter needs, whereas JIAF 2.0 takes a different approach. JIAF 2.0 determines PiN figures by selecting the maximum sectoral PiN figure at the unit of analysis level.

To ensure transparency, SSC outputs, including severity assessments and PiN figures, are seamlessly integrated into the JIAF 2.0 tools. This integration encompasses definitions, detailed methodologies, indicator selection, and the overall analysis process. As JIAF 2.0 represents an inter-sectoral joint analysis, SSC plays a pivotal role in supporting this interdisciplinary approach in an open and transparent manner, accounting for contextual nuances.

WHAT'S NEW SSC BRINGS?

THREE PILLAR ENCAPSULATING THE INDICATORS

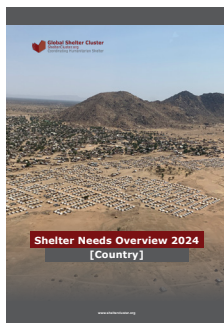


The cornerstone of our SSC methodology lies within the concept of the “shelter needs and conditions” section, which is articulated through three pivotal pillars:

1. The shelter: The structure itself as an enclosed living space that protects from external threats
2. The living conditions: in terms of domestic living and that people can live properly in their dwelling
3. The settlement: People have appropriate access to common services and infrastructure from their dwelling

These pillars provide a structured framework for understanding shelter's vital role. They incorporate mandatory indicators, sub-indicators, and criteria, standardized across Shelter Clusters worldwide within SSC. This standardization fosters a unified approach to gauging shelter needs. Importantly, they are designed for flexibility, accommodating context-specific factors in data and methodology.

SHELTER NEEDS OVERVIEW



Summary of Humanitarian Shelter Needs and Key Findings

Key Messages

Part I: Impact of the Crisis and Humanitarian Shelter Conditions

- 1.1. Context of the Crisis
- 1.2. Shocks and Impact of the Crisis
- 1.3. Scope of Analysis
- 1.4. Humanitarian Shelter Needs Conditions and Severity of Shelter Needs
- 1.5. Number of Shelter People in Need

Part 2: Risk Analysis

Part 3: Situation Analysis and Monitoring of Needs

The outcome of SSC analysis is the “Shelter Needs Overview,” a comprehensive document that consolidates all analysis conducted during SSC implementation. It provides a structured perspective on humanitarian shelter needs, key findings, essential messages, and a thorough examination of the crisis's impact, shelter conditions, risk analysis, as well as ongoing situation assessment and needs monitoring, serving as a valuable resource for informed decision-making and strategic planning.

KEY VALUE ADDED

PEOPLE CENTERED

Analysis that is driven by people's needs instead of program modalities

FULL ANALYSIS CYCLE

Forms a basis for needs, planning, response monitoring, and impact analysis

CUSTOMIZABLE

Customizable and applicable across any context

ALIGNED

Fully aligned with JIAF 2.0 and HPC processes and timelines

TOOLS

Standard assessment, calculation, analysis and visualization toolset