

**Minutes of Meeting:** Gaza Shelter Cluster Meeting

**Location:** UNRWA-Japanese Health Centre- JHC - Khanyounis

**Present:** UNRWA, UNDP, CRS, ACTED, PEF, AAH, PARK, HEKS/EPER, PHC, PUI, MAAN, Bayader, ANERA, CESVI, OCHA.

**Absent:** PRCS, SCI, BLDA, IRW, GDD, GEM, SMWG, ICRC, NRC, CARE, SIF, FAFD, AIOCP, PNGO, MOSD,

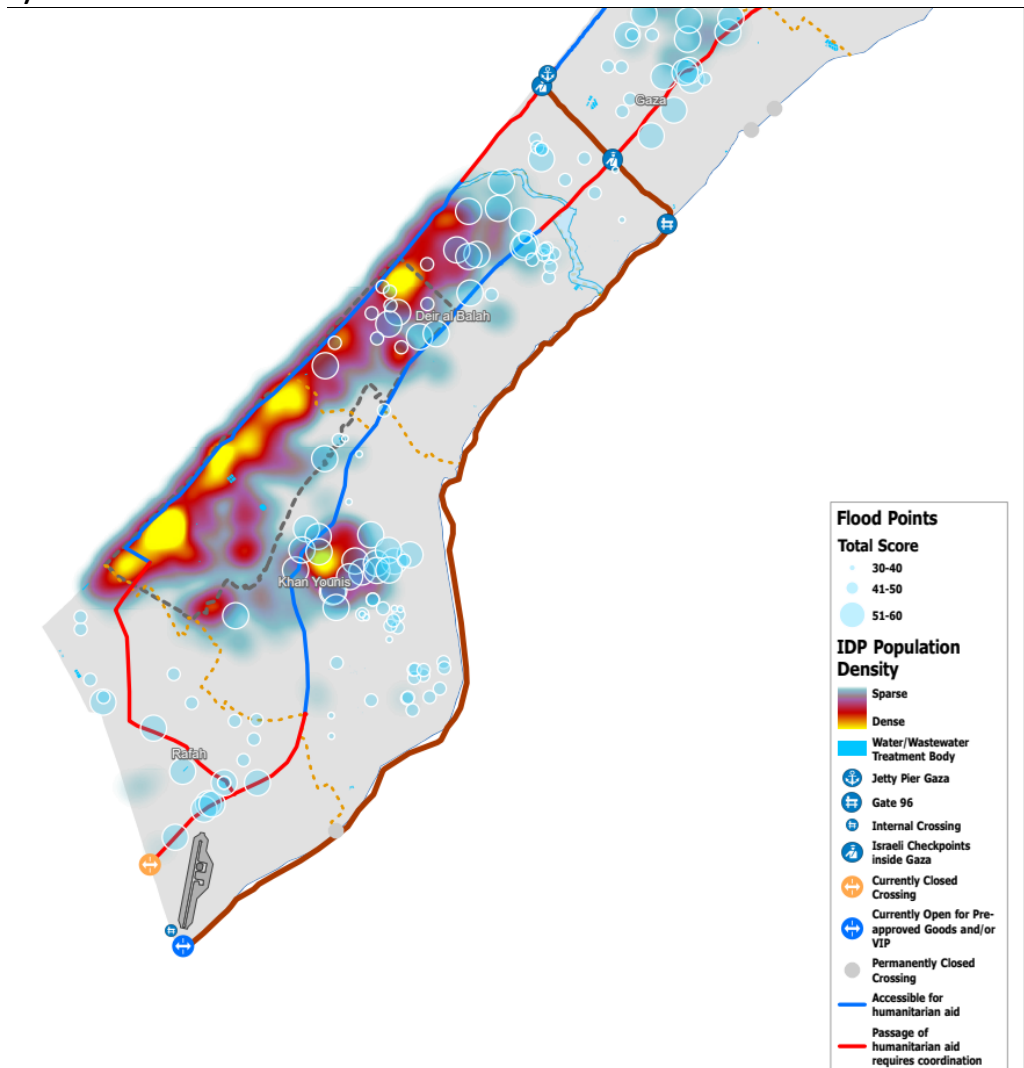
Topic and Notes on Discussion	Action points
<p><b>Meeting Agenda</b></p> <ol style="list-style-type: none"> <li>1- Introductions</li> <li>2- IM update – Kobo form being launched</li> <li>3- Gaza Updates               <ol style="list-style-type: none"> <li>a. Logistics</li> <li>b. Flooded areas in Winter</li> </ol> </li> <li>4- National updates</li> <li>5- Tech update – framing kit</li> <li>6- Prefab discussion</li> <li>7- Partner Updates</li> <li>8- AOB</li> </ol>	
<p><b>1- <u>Introductions:</u></b>  <b><i>Next Meetings:</i></b>          National Shelter Cluster Meeting (Online), Wednesday 04 September, 10:30 – 12:00          West Bank Shelter Cluster Meeting (Online), Wednesday 17 September, 10:00 – 11:30          Gaza Shelter Cluster meeting, Sunday 09 Sep, 10:30 – 12:00, Location TBC.</p>	
<p><b>2- <u>IM Updates</u></b></p> <p>Mohammed provided updates on the 5W new system. Will no longer be using Google Sheets for data collection. Excel sheet or Kobo Form.</p> <ul style="list-style-type: none"> <li>• Partners input to update the 5W sheets is appreciated, please send your updates before COB Tuesday.</li> <li>• Damage assessment figures have not changed from the last week’s update,</li> <li>• A looting form will be shared with partners to collect information that provide us with better understanding of the situation.</li> <li>• An assessment registry excel sheet will be shared with partners to gather information about the shelter assessments conducted or planned by shelter partners.</li> <li>• A new form will be shared to collect updates on partners willing to be included in the mailing list of the shelter cluster.</li> <li>• A revision of the members of the emergency Shelter WhatsApp group is planned to ensure that only active members are included in the group.</li> </ul>	

**3- Gaza Updates:**

**a) Logistics:**

- Still huge access and logistical constraints, particularly for the South. Crossing at Kerem Shalom dysfunctional - due to only a few trucks allowed to cross and looting.
- Fence Road - Of the 6 trucks of tents agreed on the 15th of August by the Gaza ICCG and Logs cluster for prioritisation for the Fence Road, still only 1 truck has arrived so far. With the market not functional and CVA not feasible, no stockpiles, and no delivery of SNFI items to the south for partners, how can Shelter NFI response be mounted?
- Still struggling to service the most urgent protection cases.

**b) Flooded areas in Winter :**



The map shows potential areas of flooding and high precipitation, some sites need evacuation and a plan of relocation is needed.

- Tuesday – WASH, SMWG and Shelter – drive around some selected sites in the middle area and Khanyounis to look at flood prone areas, and will be accompanied by “local knowledge expert”.
  - What can be mitigated – e.g. drainage channels unblocked etc.
  - Where will people be relocated to? SMWG responsibility
  - Shelter NFI – to support people to move with relevant SNFI materials (where possible).

**4- National Updates:**

- Cease fire plan update
- Winterisation plan – focus on Shelter NFI
- WB – Limited stockpiles, need for scale up, more potential for CVA.
- IOM Common Pipeline
  - 250k SoK (with 500k 4mx6m Tarps), 35k Geodesic Family Tents
  - 500k Mattresses, 750k Sleeping Mats, Toolkits 2000,
  - Plywood
  - Framing materials

Framing Kit						
#	Item	Description	Unit	Qty	Ut. Cost USD	Total Cost USD
1	Batten 25 x 100	Pine or fir tree wood of density of P<0.5 g/cm <sup>3</sup> and of class C27 according to MGB 520001. 4m long	piece	4		0
2	Batten 65 x 65	Pine or fir tree wood of density of P<0.5 g/cm <sup>3</sup> and of class C27 according to MGB 520001. 4m long	piece	8		0
3	40mm Timber Nails	Hot galvanised iron, for wood, 40mm, (1.1/2")	kg	0.5		0
4	75mm Timber nails	Hot galvanised iron, for wood, 7.5cm (3")	kg	0.5		0
5	3mm Rope	Polypropylene, diam. 3mm, twisted	m	30		0
6	12mm Rope	Polypropylene, diam. 12mm, twisted	m	30		0
7	Claw Hammer	Carpenter type, 750g, wood handle	ut	1		0
8	Handsaw	For timber, 400mm blade	ut	1		0
9	Shovel	Round point with Y handle, total length approx.1m	ut	1		0
						<b>\$ -</b>

**A. Partners Updates:**

**ACTED:**

Have completed the distribution of 1750 clothes kits and 132 complete Shelter/NFI kits in the North.

**AAH:**

Have 300 mattresses and 200 pillows to be distributed in the North. Bedding sets and 1440 tents are on the pipeline from Jordan to the North expected end of September.

**HEKS:**

Completed the procurement of the shelter/NFIs and looking for ways to import them into Gaza.

**CRS:**

Some distributions conducted in the North, 300+ tents distributed last week, advocacy to allow materials movement from the North to the South is required.

**B. AOB**

- Advocacy efforts are needed such as a document or press release to be raised at higher levels highlighting the lack of access of materials to and through Gaza Strip, the winterization needs, and the number of IDPs in various displacement sites.