




# The Global Shelter Cluster Research Agenda



A woman wearing a yellow headscarf and multiple necklaces of red and black beads is smiling from behind a metal cage. The cage is covered with numerous silver padlocks. In the background, other people are visible, including an older woman with a yellow headscarf.

*Evidence makes humanitarian action  
more effective, ethical, and accountable.*



**Global Shelter Cluster**  
ShelterCluster.org  
Coordinating Humanitarian Shelter

# The Global Shelter Cluster Research Agenda

1. The Global Shelter Cluster.
2. Evidence Based Response – Amelia Rule NRC, and John Wain UNHCR.
3. The Research Agenda.
4. Recent Research.
5. Next Steps.

# The Global Shelter Cluster

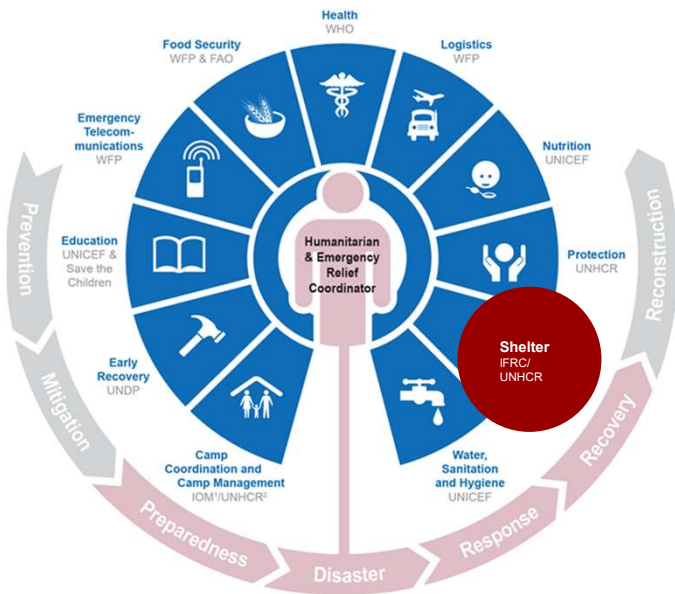


## The Global Shelter Cluster: Operational Focus



# The Global Shelter Cluster: Leadership and Reach

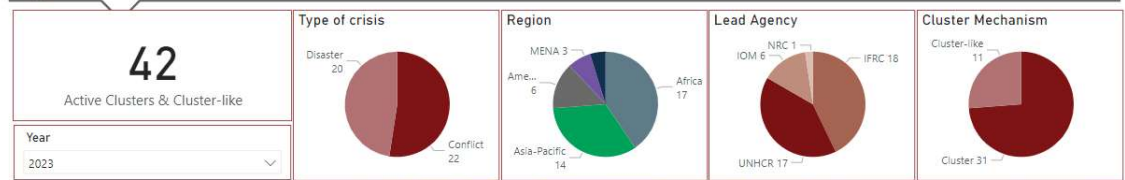
The Shelter Cluster is led by IFRC and UNHCR, in partnership with National Governments to coordinate humanitarian assistance.



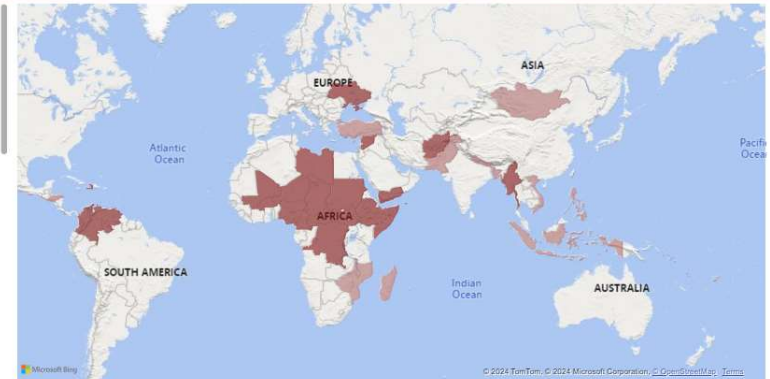
**Global Shelter Cluster**  
ShelterCluster.org  
Coordinating Humanitarian Shelter

## SHELTER CLUSTER OPERATIONS

Last update: January 2024



| Country                      | Lead  | Co-Lead/Co...              | Type of crisis |
|------------------------------|-------|----------------------------|----------------|
| Afghanistan                  | UNHCR |                            | Conflict       |
| Americas Region              | IFRC  |                            | Disaster       |
| Bangladesh                   | IFRC  | UNDP                       | Disaster       |
| Burkina Faso                 | UNHCR | NRC                        | Conflict       |
| Cameroon                     | UNHCR | NRC                        | Conflict       |
| Central African Republic     | UNHCR | IOM                        | Conflict       |
| Chad                         | UNHCR |                            | Conflict       |
| Colombia                     | IOM   | NRC                        | Conflict       |
| Democratic Republic of Congo | UNHCR | ACTED                      | Conflict       |
| El Salvador                  | UNHCR |                            | Disaster       |
| Ethiopia                     | IOM   |                            | Conflict       |
| Fiji                         | IFRC  |                            | Disaster       |
| Haiti                        | IOM   | Government                 | Conflict       |
| Honduras                     | IFRC  |                            | Disaster       |
| Indonesia                    | IFRC  |                            | Disaster       |
| Libya                        | UNHCR |                            | Conflict       |
| Madagascar                   | IFRC  | Malagasy Red Cross Society | Disaster       |



**Global Shelter Cluster**  
ShelterCluster.org  
Coordinating Humanitarian Shelter

# The Global Shelter Cluster: Strategic Advisory Group



the  
power of  
humanity



NORWEGIAN  
REFUGEE COUNCIL



**IMPACT** Shaping practices  
Influencing policies  
Impacting lives  
REACH | PANDA | AGORA



DANISH  
REFUGEE  
COUNCIL



 **Global Shelter Cluster**  
ShelterCluster.org  
Coordinating Humanitarian Shelter

# The Global Shelter Cluster: Research Partners

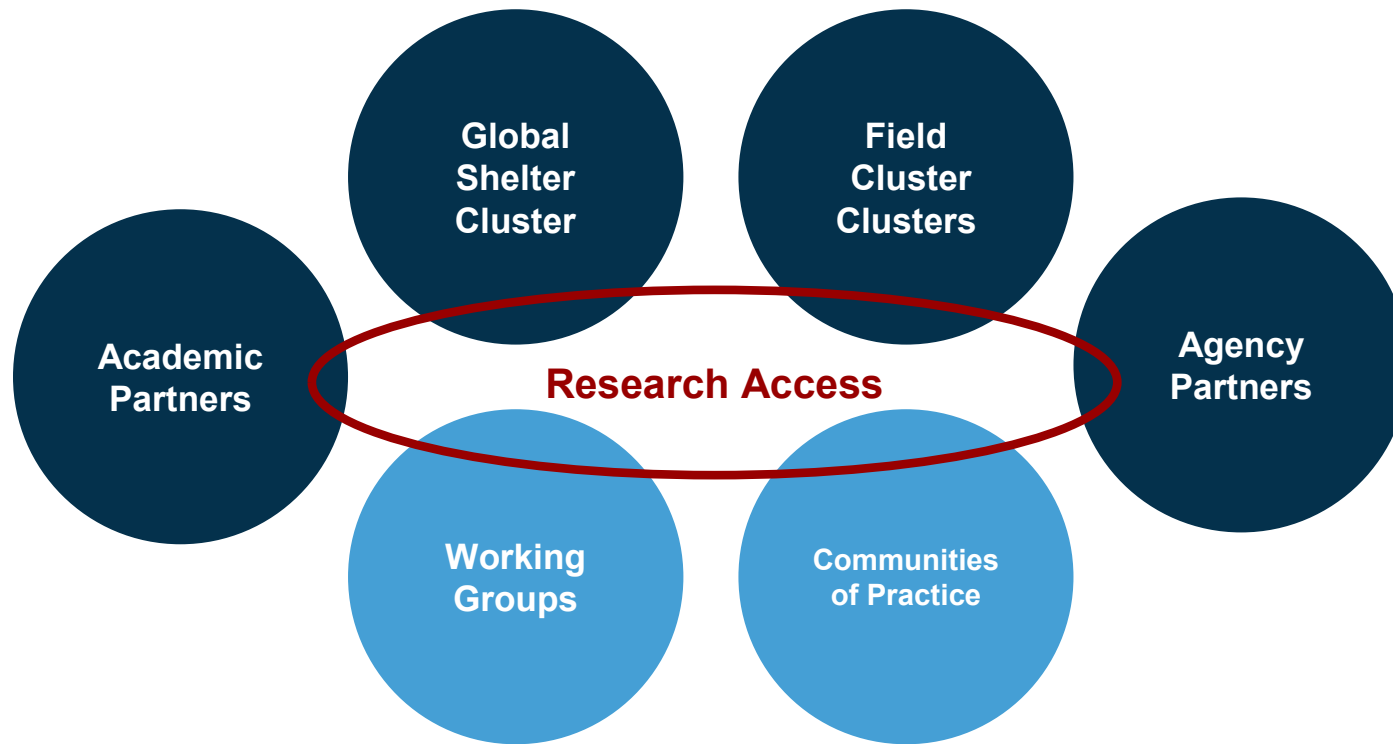
- [CARE International UK](#)
- [Catholic Relief Services](#)
- [ELRHA](#)
- [Habitat for Humanity International](#)
- [International Federation of the Red Cross and Crescent](#)
- [International Organisation for Migration](#)
- [Medair](#)
- [Massachusetts Institute of Technology, US](#)
- [Oxford Brookes University, UK](#)
- [United Nations High Commissioner for Refugees](#)
- [Universitat Internacional de Catalunya, Spain](#)
- [University of California, Berkeley, US](#)
- [University of Colorado, Boulder, US](#)
- [University of Copenhagen, Denmark](#)
- [University of Sydney, Australia](#)



**Global Shelter Cluster**  
ShelterCluster.org  
Coordinating Humanitarian Shelter



## The Global Shelter Cluster: Research Access





## The Global Shelter Cluster: Research

Led by Habitat for Humanity International on behalf of the GSC:

- **GSC Research Agenda** - Global Priorities
- **Humanitarian Fellowships** - LMIC based fieldwork
- **Evidence Based Response**- Advocacy and Strategic Planning
- **Evidence Dissemination** - Learning Events and Publications

# Evidence Based Response



---

## Evidence Based Response

**Amelia Rule** Global Lead - Shelter and Settlements **Norwegian Refugee Council**

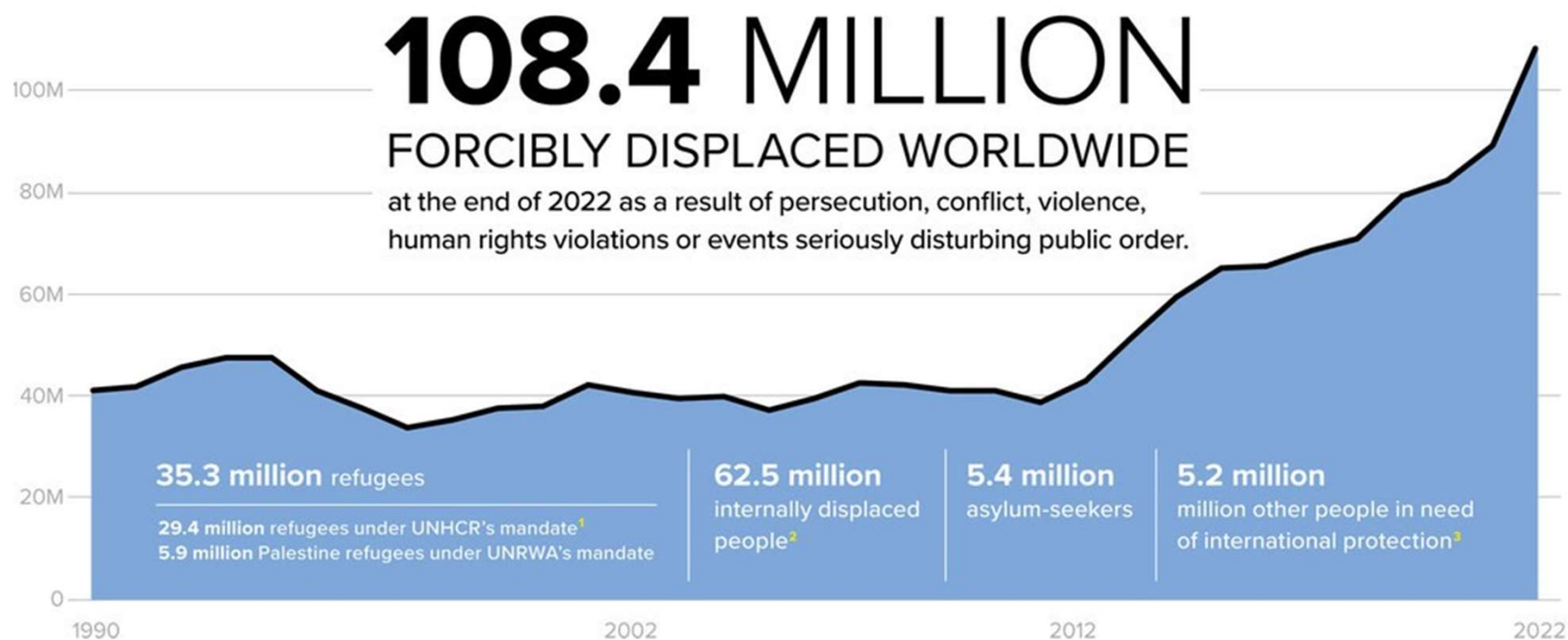
**John Wain** Senior Shelter and NFI Cluster Coordinator, Ukraine **UNHCR**

# The Global Shelter Cluster Research Agenda



**Global Shelter Cluster**  
ShelterCluster.org  
Coordinating Humanitarian Shelter

## The GSC Research Agenda: Why?



## The GSC Research Agenda: Why?

*“Evidence-based strategies to aid decision making and selection of effective, appropriate and efficient interventions for people affected by or at risk of humanitarian crises are increasingly important.”*

Water, Sanitation and Hygiene in Humanitarian Crises: Setting the research agenda up to 2030 - Elrha

## The GSC Research Agenda: What is it?

- ★ The **Research Agenda** is a guide to the **key areas** where the Global Shelter Cluster is focusing its research efforts.
- ★ We welcome **evidence from the research community** in these areas to build the evidence base for supporting shelter and settlements in humanitarian crises.

## The GSC Research Agenda: What it is not.

- ① The **Research Agenda** is not an exhaustive list of the research priorities of all practitioners. It is focused on the gaps we need to fill.
- ① The **Research Agenda** does not reflect the research priorities of all stakeholders working on shelter and settlements in humanitarian crises.

# The GSC Research Agenda: Methodology

The team of **Habitat for Humanity International** and **Oxford Brookes University** produced an indicative baseline to ensure that this work is evidence-based and relevant.

The consultation included:

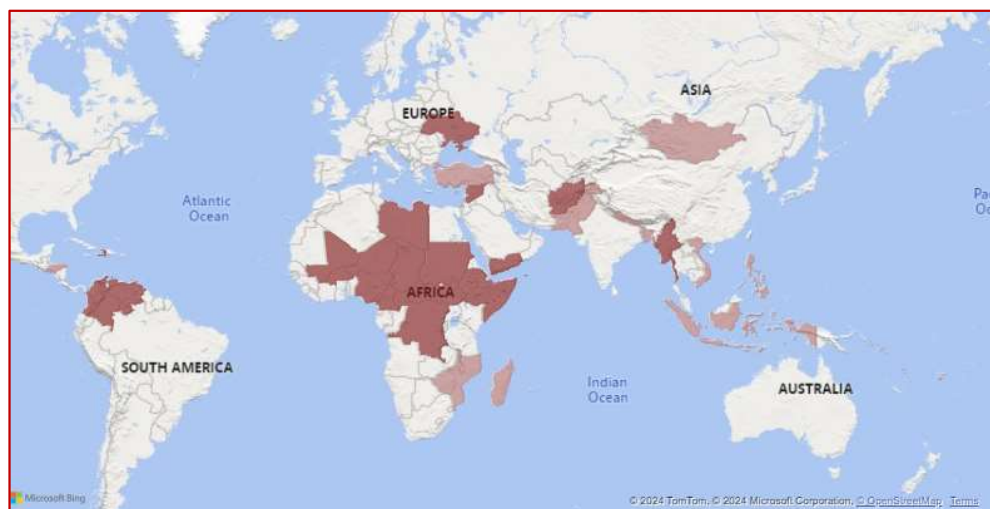
**20** Cluster Coordinators

**24** Academic Partners

**11** Cluster Agencies

**42** Countries

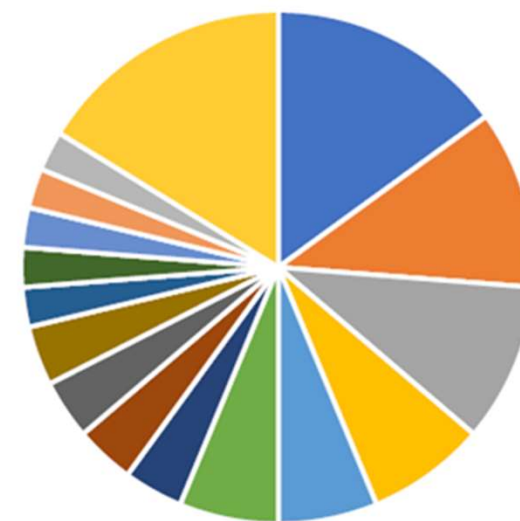
Data was collected using surveys and semi-structured interviews.



## The GSC Research Agenda: Findings

28 themes research themes were suggested by practitioners in 20 countries as the areas where they need more evidence to support their work.

The **3 top themes** which were suggested by most practitioners were taken as the **Priority Research Themes** for the research agenda.



- Long Term Recovery
- Wide Impacts
- HLP
- Local Partners
- Local Materials
- Underfunding
- Non Camp Approaches
- Communicating with Households
- Cash and Markets
- GBV
- Climate Change
- Emergency Shelter
- Inclusion
- Winterisation
- Conflict
- Other

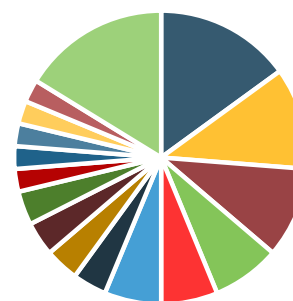
# The GSC Research Agenda: Findings

## SAG Research Priorities



- Wider Impacts
- Cash and Markets
- Conflict
- Space Standards
- Self-Recovery
- HLP
- Longer Term Impact and Recovery

## Cluster Coordinator Research Priorities



- Longer Term
- Wider Impacts
- HLP
- Local Partners
- Local Materials
- Underfunding
- Non Camp Approaches
- Communicating with Households
- Cash and Markets
- GBV
- Climate Change
- Emergency Shelter
- Inclusion
- Winterisation
- Conflict
- Other

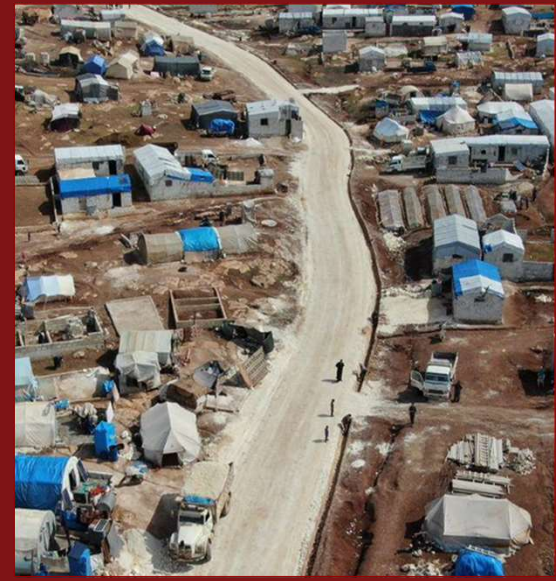
# The GSC Research Agenda: Priority Research Themes



**Cash and Markets**



**The Wider Impacts**



**The Longer Term**

# The GSC Research Agenda: Priority Research Themes

## Cash and Markets Approaches for Shelter and Settlements in Humanitarian Crises



- ❖ What are the criteria for deciding when and where cash programming approaches are appropriate in support of those who have lost their shelter and settlements in humanitarian crises, and what influences these decisions?
- ❖ What is the impact of cash programming for households who have lost their shelter and settlements, in comparison with other modalities?

# The GSC Research Agenda: Priority Research Themes

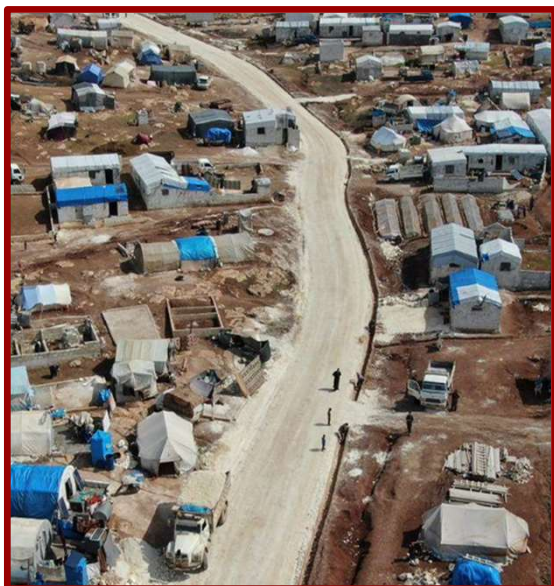
## The Wider Impacts of Shelter and Settlements in Humanitarian Crises



- ❖ What is the role of shelter and settlements in the health /livelihoods /protection of households who have lost their shelter and settlements?
- ❖ How do the wider impacts of supporting households who have lost their shelter and settlements indicate how support is best provided?

# The GSC Research Agenda: Priority Research Themes

## The Longer Term of Shelter and Settlements in Humanitarian Crises



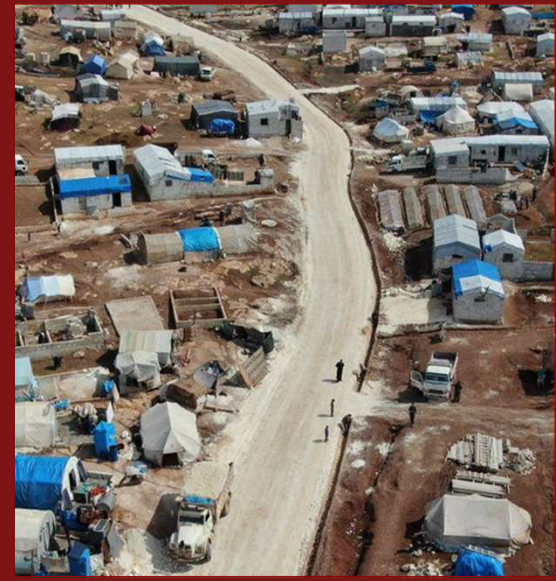
- ❖ How have shelter practitioners navigated barriers to support households recovering from humanitarian crises?
- ❖ What can humanitarian agencies learn from how households self-recover in the longer term?



**Cash and Markets**



**The Wider Impacts**



**The Longer Term**

## The GSC Research Agenda: Using the Priority Themes.

What are the criteria for deciding when and where cash programming approaches are appropriate in support of those who have lost their shelter and settlements in humanitarian crises **globally**?

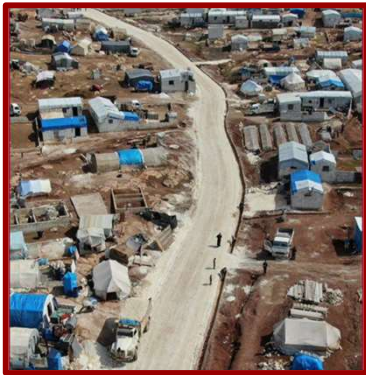
What is the role of shelter and settlements in the **health** of households who have lost their shelter and settlements in **Mexico**?



What can humanitarian agencies learn from how the long-term recovery of households in **Pakistan**?

What is the role of shelter and settlements in the **protection** of households who have lost their shelter and settlements in **Venezuela**?

# The GSC Research Agenda: Filling the Gaps.



# The Global Shelter Cluster Recent Research

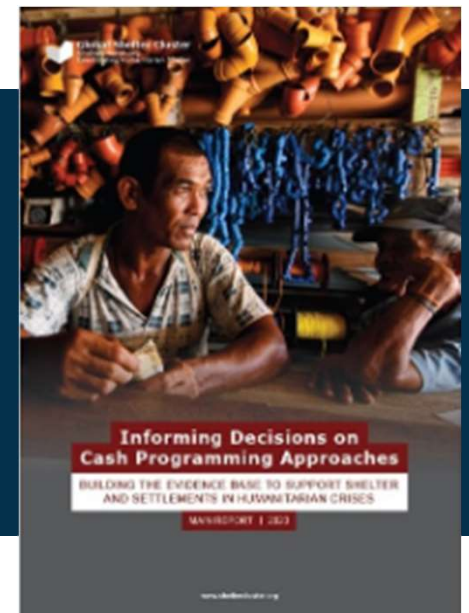


**Global Shelter Cluster**  
ShelterCluster.org  
Coordinating Humanitarian Shelter

# The Global Shelter Cluster: Recent Research

What are the criteria for deciding when and where cash programming approaches are appropriate in support of those who have lost their shelter and settlements in humanitarian crises **globally?**

[Informing Decisions on Cash Programming Approaches | Shelter Cluster](#)

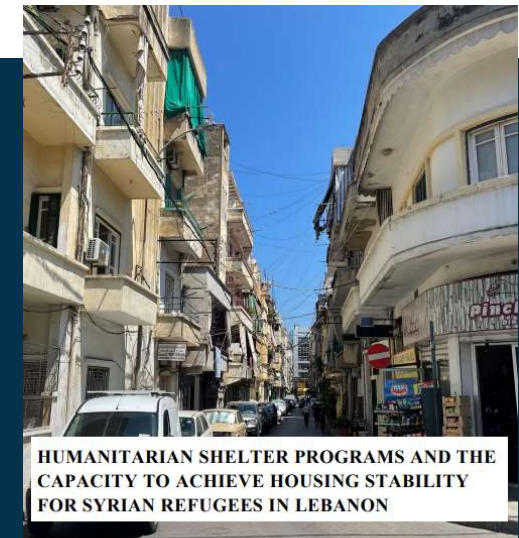


# The Global Shelter Cluster: Recent Research

Should I stay or should I go?: Reasons beneficiaries decide to stay or leave aid-provided in-situ housing **University of Colorado Boulder, US**

The Venezuelan Refugee Crisis Implications for Housing, Land, Property Rights and Tenure Security in Perú **University of California Berkeley, US**

Humanitarian Shelter Programs and the Capacity to Achieve Housing Stability for Syrian Refugees in Lebanon **University of Copenhagen, Denmark**



Habitat-USAID/BHA fellowship cohorts | Habitat for Humanity

Madeline Shea Burham  
Master of Disaster Management Candidate  
University of Copenhagen  
Presented for the 2022-2023 USAID and HFIH Graduate Fellowship in Humanitarian Shelter and Settlements



# The Global Shelter Cluster: Recent Research

B.1 - Influences on the decision to use Cash Assistance to support Shelter and Settlements

B.2 - Constructive Ambiguity: Supporting Recovery from Humanitarian Crises

B.3 - Addressing the challenges to adequate housing for Venezuelan refugees in Latin America and the Caribbean

[shelterprojects.org](https://shelterprojects.org)



**SHELTER PROJECTS** 9<sup>th</sup> edition

CASE STUDIES OF HUMANITARIAN SHELTER AND SETTLEMENT RESPONSES 2021-2022

**Global Shelter Cluster**  
ShelterCluster.org  
Coordinating Humanitarian Shelter

 **Global Shelter Cluster**  
ShelterCluster.org  
Coordinating Humanitarian Shelter

# The Global Shelter Cluster Next Steps



**Global Shelter Cluster**  
ShelterCluster.org  
Coordinating Humanitarian Shelter

## The GSC Research Agenda: Next Steps

### ➤ Donors:

Consider how you can resource research capacity for evidence-based responses.

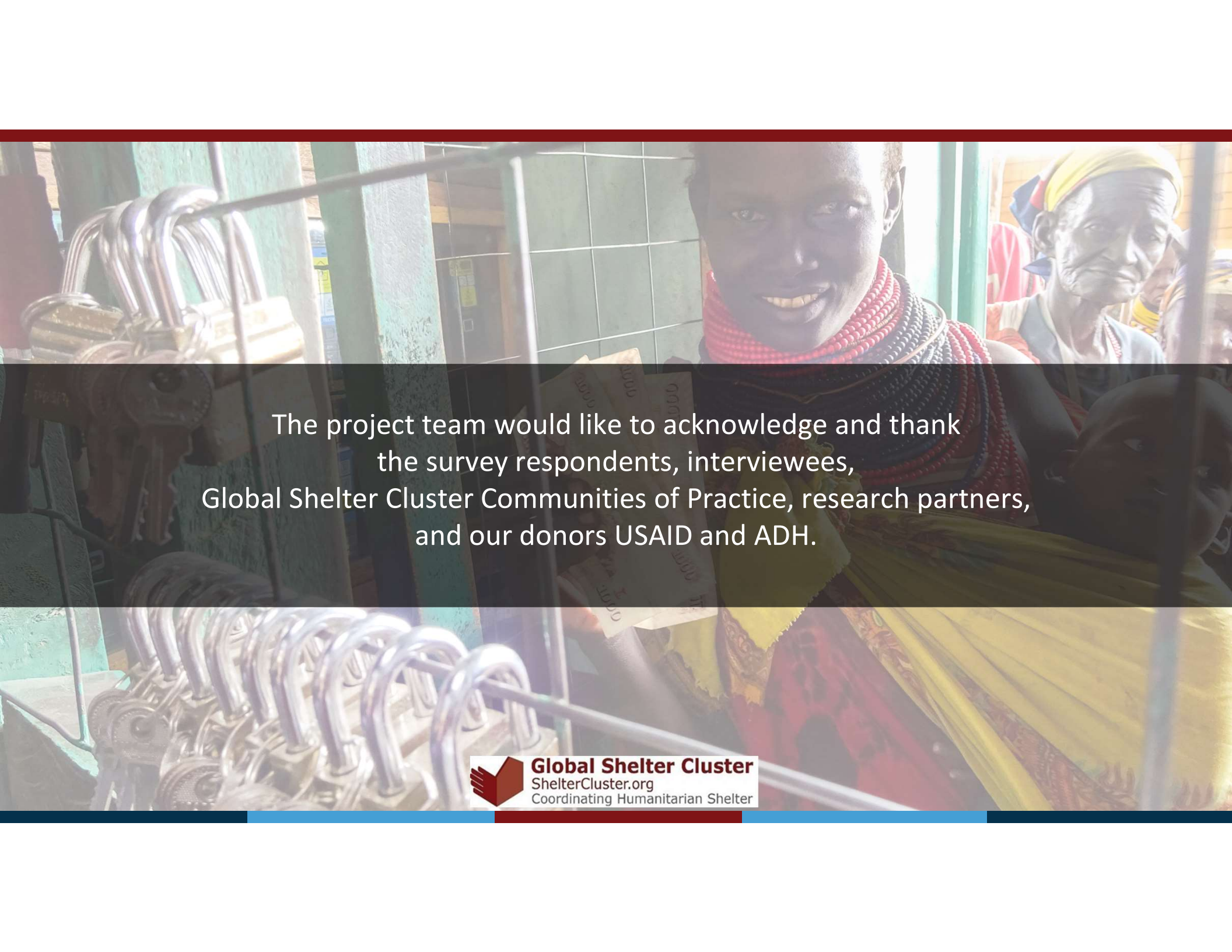
### ➤ Research Partners:

Consider how you can contribute to answering the research questions and consult practitioners on your research design.

### ➤ Practitioners:

Reflect on the questions to refresh and expand the Research Agenda.




A woman in traditional beaded attire is smiling and holding a document. In the background, other people are visible, including an older woman wearing a yellow headscarf. The scene appears to be indoors, possibly in a community center or a shelter.

The project team would like to acknowledge and thank  
the survey respondents, interviewees,  
Global Shelter Cluster Communities of Practice, research partners,  
and our donors USAID and ADH.



**Global Shelter Cluster**  
ShelterCluster.org  
Coordinating Humanitarian Shelter

A woman wearing traditional beaded necklaces and a yellow headscarf smiles from behind a metal cage. The cage is covered with numerous silver padlocks. In the background, other people are visible, including an older woman with a yellow headscarf.

*Evidence makes humanitarian action  
more effective, ethical, and accountable.*



**Global Shelter Cluster**  
ShelterCluster.org  
Coordinating Humanitarian Shelter

*We welcome  
your questions*

**Thank you**

[lizzie.babister@sheltercluster.org](mailto:lizzie.babister@sheltercluster.org)

For more information please contact:  
**Dr Lizzie Babister, Global Focal Point for Research**

