

Roof




	<p>NOT DAMAGED</p>	
	<p>MINOR DAMAGES (roof is leaking in some part of the building)</p> <p>It is possible to see evidence of water leakages. But there are no holes in the roof.</p>	
	<p>MODERATE DAMAGES (holes or large cracks in many part of the roof)</p> <p>There are some holes or large cracks in the roof. rain is coming inside the dwelling.</p>	
	<p>SEVERE DAMAGES (roof with major holes or even completely destroyed)</p> <p>There are many holes, some are big. The Roof would be very difficult to repair.</p>	

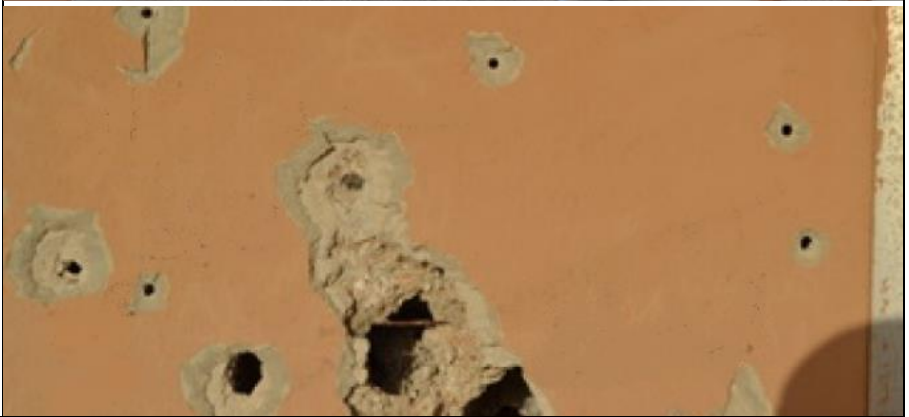
Photo Courtesy Ed Straten

Walls

NOT DAMAGED

MINOR DAMAGES (non structural cracks on the walls, bullet holes)

The holes can be easily repaired. Air is not going through the holes.



Moderate damages (holes in many part of the walls (you can see through is some of them) and/or cracks on the columns)



Walls

SEVERE DAMAGES

(large holes in many walls where you can see through, major cracks in some columns, walls completely destroyed)

First and second picture:
Those damaged wall would be very difficult to repair and would require engineering expertise.



Third picture:
The structure is badly damaged. We can see all the iron bars.



Doors and windows

NOT DAMAGED

MINOR DAMAGES
(few glass broken, a few windows can be slightly damaged.)



Doors and windows

**Moderate damages
(many glass and/or
some windows or
doors broken)**

*Most of the glass are
broken and several
window frames are
damaged*



**Severe damages
(many doors and
windows damaged or
destroyed)**

*All the windows are
very damaged and
need to be replaced*



Exemples



Roof : Severe damages (many holes, would be very difficult to repair)

Walls : Severe damages (many holes, one is completely destroyed)

Doors/windows: severe damages (Most of windows are destroyed.)



Roof : Severe damages (many holes, would be very difficult to repair)

Walls : Severe damages (many holes, one is completely destroyed)

Doors/windows: severe damages (Most of windows are destroyed.)



Roof : unknown
Walls : Minor damages
Doors/windows: severe damages



Roof : unknown
Walls : Minor damages (just a few bullet holes)
Doors/windows: severe damages (all glasses are broken, 3/4 windows are destroyed..)



Roof : unknown
Walls : Severe damages (many holes, some are large)
Doors/windows: severe damages (Most of windows are destroyed.)