



# COMMON PIPELINE PROGRAMME

*Catalogue of humanitarian items for partners*

In February 2024, the International Organization for Migration (IOM) established the Common Pipeline programme as part of the regional humanitarian response to the crisis in Gaza. The Common Pipeline supports the transportation and distribution of core emergency assistance—including shelter materials, non-food items (NFIs), and water, sanitation, and hygiene (WASH) supplies—for crisis-affected populations in the Occupied Palestinian Territory, with a focus on the Gaza Strip. Managed by IOM in close coordination with the Logistics, Shelter/NFI, and WASH Clusters, the Common Pipeline enables faster procurement, prepositioning, and delivery of standardized, high-quality relief items. The programme aims to strengthen the capacity of local and smaller organisations by providing technical support, streamlined logistics, and access to essential supplies, ultimately enhancing the efficiency and accountability of the overall humanitarian response.

IOM works through partners on the ground in Gaza. To access the Common Pipeline, organisations must meet specific eligibility criteria, including:

- legal registration and operational presence in Gaza;
- active participation in the relevant Clusters and endorsement of the Joint Operating Principles;
- sufficient technical, financial, and logistical capacity;
- established policies and commitments on Protection from Sexual Exploitation and Abuse (PSEA) and Sexual Harassment;
- and clearance through IOM's due diligence process and, where applicable, donor vetting requirements.
- An active agreement with IOM for the Common Pipeline programme is also required.

To apply for registration to the IOM Common Pipeline Programme, please fill out a registration form here: [\*\*IOM common pipeline partner pre-registration form\*\*](#)

TABLE OF CONTENTS

**SHELTER**

Adhesive Tape Without Logo	05
Ropes 15m	05
Tarpaulins (4x6m)	06
General Purpose Tool Kit	06
Geodesic Family Tents 18.3m2	07
High Performance Tent 24m2	07
High Performance Tent 48m2	08
Plywood Sheet (3.6 mm thickness)	08
Plywood Sheet (9 mm thickness)	09
UNHCR Family Tent 16m2	09
Sandbags	10

**NFIs**

High Thermal Blankets	12
Kitchen Set Type A	12
Kitchen Set Type B	13
Blankets	13
Mattresses	14
Pillow case	14
Pillows	15
Plastic Film	15
Sleeping Mats	16
Solar Lantern	16

Summer Clothes	17
<i>Infants Kit 0-2 years</i>	
<i>Toddler Kit 3-5 years</i>	
<i>Children Kit 6-11 years</i>	
<i>Girls Kit 12-15 years</i>	
<i>Boys Kit 12-15 years</i>	
Winter Clothes	22
<i>Infants Kit 0-2 years</i>	
<i>Toddler Kit 3-5 years</i>	
<i>Children Kit 6-11 years</i>	
<i>Boys Kit 12-15 years</i>	
<i>Girls Kit 12-15 years</i>	

**WASH**

Bladder (10m3)	27
Bladder (20m3)	27
Bladder (5m3)	28
Bucket, Plastic, 14L, Heavy Duty Plastic	28
Chlorine Tablets	29
Cleaning and Disinfection Kits	29
Collapsible Jerrycan 10L	30
Infant Diapers 3-0 Months	30
Infant Diapers 6-3 Months	31
Infant Diapers 12-6 Months	31

Duo Latrine	32
Handrail + Seat for Latrines	32
Hose	33
Hygiene Kits	33
Latrine Slabs	34
Latrine Unit Superstructure	34
Multi Purpose Soap	35
OXFAM Handing Washing Kit	36
Tapstand Kit	36



COMMON PIPELINE PROGRAMME

# SHELTER

## Adhesive Tape Without Logo

Sealing Off Kit

Tarp, tape, and rope to be requested together to create a sealing off kit

Tarps 2 Tapes 2 Ropes 2



### Purpose

A durable adhesive tape designed for sealing off kits in emergency settings. With strong adhesive properties and flexibility, it provides reliable sealing for openings and repairs, ensuring weather resistance and long-lasting performance.

### Specifications

- **PVC Duct Tape roll** 25 m long x 50 mm wide

Part of Kit: Sealing off Kit

## Ropes 15m

Sealing Off Kit

Tarp, tape, and rope to be requested together to create a sealing off kit

Tarps 2 Tapes 2 Ropes 2



### Purpose

A high-strength, UV-stabilized polypropylene rope included in sealing off kits used to secure tarps in emergency settings to improve shelter conditions.

### Specifications

- **A high-strength, UV-stabilized polypropylene rope**, 8mm in diameter and 15m or 30M in length, designed for sealing-off kits in emergency settings. With a minimum tensile strength of **350kg** and compliance with **ISO9554 standards**, it is, black in color, and labeled with specifications such as type, material, length, and manufacturer. The rope is coiled and secured with paper tape, avoiding unnecessary plastic waste.
- The rope is twisted with three strands and black in color
- **Material:** Polypropylene - Twisted 8mm diameter
- **Diameter:** 8mm
- **Length:** 15m
- **Tensile strength:** 350 kg (1,040kg breaking strength)
- **Packing Details:** Packed in bales of 30 units of 15m each. Each unit of 15m rope to be coiled and secured using ties

Part of Kit: Sealing off Kit

## Tarpaulins (4x6m) *Sealing Off Kit*

Tarp, tape, and rope to be requested together to create a sealing off kit

Tarps 2    Tapes 2    Ropes 2



### Purpose

A heavy-duty tarpaulin designed for emergency shelter use features reinforced bands along the edges and pre-punched holes at 0.1m intervals for secure fastening. The design aligns with ICRC/IFRC standards, based on over 15 years of laboratory testing and proven field performance.

Part of Kit: Sealing off Kit

### Specifications

- **Dimensions:** 4 m x 6 m
- Pre-punched 8mm holes on the 2 side bands at 0.1m +/-10% intervals, positioned in the center of the bands (only the reinforcement bands are pre-punched, not the tarpaulin itself).
- **Material:** Woven high-density polyethylene (HDPE) black fibres fabric laminated on both sides with white low density polyethylene (LDPE) coating
- **Material for the reinforced attachment points:** 6 bands of 7.5cm width made of woven black HDPE fibres fabric and coated with grey LDPE on the outside
- **Tear and UV resistant** with tested tensile strength
- **Flame retardant**
- **Colour:** White, to be sun reflective on both sides of the sheet with grey coating on the outside of the bands and inner black fibres to ensure opacity
- **Packing:** 5 tarpaulins per bale and the bale must be wrapped with a piece of similar material as the one of the tarpaulins with the wrapping must properly folded and tightly closed.

## General Purpose Tool Kit



### Purpose

A versatile general-purpose tool kit designed for emergency and construction use, packaged in a durable polyethylene bag. The kit includes essential items to install or repair an emergency shelter.

Kit

### Specifications

- **12 diameter twisted polypropylene rope** 30m length 1 piece
- **3 diameter twisted polypropylene rope** 30m length 1 piece
- **Temper handsaw**, length 55cm with wooden or plastic handle 1 piece
- **Common galvanized wood nails**, 1 kg of 60 x 2.8 mm and 1 kg of 100 x 4 mm 2 kg
- **Shovel** (295 x 225 mm) with standard wooden handle with a length of 1 meter 1 piece
- **Hoe** (180 x 310 mm) with standard wooden handle with a length of 1 meter 1 piece
- **Combination Pliers** (150 mm with a 34 mm jaw) 1 piece
- **Galvanized tie wire** 25 meter long x 1.5 mm diameter roll 1 piece
- **Claw hammer with wooden or plastic handle** (overall weight: 700-800g) 1 piece
- **Measuring tape** 1 piece
- **All items in Polyethylene bag** 1 piece

## Geodesic Family Tents / 18.3m<sup>2</sup>



### I Purpose

A geodesic family tent featuring reinforced roofing, walls, mud-flaps, ground sheet, and shade-fly, offering a robust design that meets stringent standards. The tent also includes a removal room separator and is designed for optimal opacity and reflectivity to provide comfort and protection in emergency shelter settings. This tent is meant for a family of 5 persons in line with the recommended minimum standard living area (3.5m<sup>2</sup> per person).

### I Specifications

- **Living area of 18.3m<sup>2</sup>**
- **Outer dimensions:** Centre height: 2.40m, Width: 4.33m, Length: 5.58m, Doors height: 1.8m
- **Material:** constructed from durable high-density polyethylene (HDPE) black fibers with white low-density polyethylene (LDPE) coating on both sides
- **Flame-retardant** (Class D, s2, d2)
- **Tested tensile strength**
- **Flame and UV resistant**
- **Five pre-shaped aluminium poles** to support the tent structure
- **Inner living area:** One partition divides the inner tent into two equal spaces; The tent has **6 windows, 2 ventilation openings, and 2 doors**
- **Total packed weight: 50 kg**

## High Performance Tent 24m<sup>2</sup>



### I Purpose

This high-performance inflatable tent is designed for rapid deployment in emergency or humanitarian settings, offering a functional shelter equipped with power distribution, LED lighting, a stationery kit, and four folding chairs.

### I Specifications

- **Living area of 24m<sup>2</sup>**
- **Outer dimensions:** Centre height: 300 cm, Width: 400 cm, Length: 600 cm, Doors height: 190 cm
- **Material:** The outer liner (HDPE/LDPE) is laminated woven fabric or mix of modacrylic & cotton fabric
- **Comes with LED lighting and 4 folding chairs**
- **Flame-retardant**
- **Tested tensile strength**
- **Flame and UV resistant**
- **Aluminium poles with cross connectors** to support the tent structure
- The tent has **4 windows, 4 ventilation openings, and 2 doors**
- **Total packed weight: 267 kg**

## High Performance Tent 48m<sup>2</sup>



### Purpose

This high-performance inflatable tent is designed for rapid deployment in emergency or humanitarian settings, offering a functional shelter equipped with power distribution, LED lighting, a stationery kit, and four folding chairs.

### Specifications

- **Living area of 48m<sup>2</sup>**
- **Outer dimensions:** Centre height: 300cm, Width: 600cm, Length: 800cm, Doors height: 190cm
- **Material:** The outer liner (HDPE/LDPE) is laminated woven fabric or mix of modacrylic & cotton fabric
- **Comes with LED lighting and 4 folding chairs**
- **Flame-retardant**
- **Tested tensile strength**
- **Flame and UV resistant**
- **Aluminium poles with cross connectors** to support the tent structure
- The tent has **4 windows, 4 ventilation openings, and 2 doors**
- **Total packed weight: 379 kg**

## Plywood Sheet (3.6 mm thickness)



### Purpose

A versatile plywood sheet designed for use in emergency shelters and communal latrines. Lightweight yet durable, it offers reliable strength and flexibility for a range of applications, from structural support to partitioning in challenging environments.

### Specifications

- **Material:** Birch plywood, smooth to touch
- **Dimensions:** 240x120 cm
- **Thickness:** 3.6 mm thickness (+/- 0.2 mm)

## Plywood Sheet (9 mm thickness)



### Purpose

A versatile plywood sheet designed for use in emergency shelters and communal latrines. Lightweight yet durable, it offers reliable strength and flexibility for a range of applications, from structural support to partitioning in challenging environments.

### Specifications

- **Material:** Birch plywood, smooth to touch
- **Dimensions:** 240x120 cm
- **Thickness:** 9 mm thickness

## UNHCR Family Tent 16m<sup>2</sup>



### Purpose

The UNHCR family tent is the standard tent used by UNHCR/ICRC/IFRC and suitable for a family of 5 people, following the recommended minimum living area in hot and temperate climates (3.5 m<sup>2</sup> per person), and providing additional space for cold climates. Fire retardant, weatherproof treated canvas, tensile strength meeting minimum standards, and UV resistant without logo.

### Specifications

- **Living area** of 16 m<sup>2</sup> plus two 3.5 m<sup>2</sup> vestibules, for a total area of 23 m<sup>2</sup>, double-fold with ground sheet
- **Outer dimensions:** Centre height: 2.20m, Width: 4m, Length: 6.6m, Doors height: 1.4m
- **Material:** constructed from durable high-density polyethylene (HDPE)
- **Flame-retardant**
- **Tested tensile strength**
- **Flame and UV resistant**
- The structure uses **26 steel poles**, **1 steel door ridge**, and **8 steel cross pieces** to support the tent structure
- **Inner living area:** One partition divides the inner tent into two equal spaces; The tent has **2 long windows**, **1 ventilation openings**, and **2 doors**
- **Total packed weight:** 62 kg

## Sandbags



### I Purpose

Bags that can be used to support wash facilities and site management to prevent flooding.

### I Specifications

- **Material:** Woven Polypropylene 86%, double stitched for strength
- **Size:** 60 x 100cm
- **Fabric Weight:** 120gsm
- **Construction:** Woven, double stitched for strength with tie string at the mouth and rope to close the mouth



COMMON PIPELINE PROGRAMME

# NON-FOOD ITEMS

## NFIs

## High Thermal Blankets



### Purpose

High thermal polyester blanket provides insulation and protection against loss of body heat due to climate and cold weather conditions, preferred blanket for winter.

### Specifications

- **Make:** Knitted or woven, dry raised both sides, Type H temp
- **Content:** %100 pure polyester and/or acrylic fibres or polyester/cotton
- **Dimensions:** 150x 200cm
- **Weight:** 500g/m<sup>2</sup> minimum, maximum 1000g/m<sup>2</sup> weight determined by total weight/total surface
- **Thickness:** 9.5mm minimum
- **Thermal resistant** at  $R_{ct} = 0.40m^2$  and fire resistant

## Kitchen Set Type A



### Purpose

This kitchen kit is a comprehensive -38piece set designed to meet the essential cooking and dining needs of families or individuals in humanitarian or emergency settings. It includes durable stainless steel cookware, utensils, and serving tools, ensuring practicality, longevity, and ease of use in challenging environments.

Kit



### Specifications

- **Bowl for food**, 1L, stainless steel **5 pieces**
- **Table fork**, stainless steel **5 pieces**
- **Table knife**, stainless steel **5 pieces**
- **Table spoon**, stainless steel, 10ml **5 pieces**
- **Frying Pan**, 2.5L, used as lid for the 7L cooking pot **1 piece**
- **Kitchen knife**, stainless steel blade 15cm, plastic handle **1 piece**
- **Cooking Pot**, 5L, stainless steel, diameter 22cm, with handles and lid **1 piece**
- **Cooking Pot**, 7L, stainless steel, diameter 25cm, with handles **1 piece**
- **Stainless steel cup with handle**, 300ml **5 pieces**
- **Deep plate**, stainless steel, diameter 22cm, capacity 0.75L **5 pieces**
- **Wooden spoon** 30cm **1 piece**
- **Serving spoon**, 35ml, stainless steel **1 piece**
- **Serving ladle**, 100ml, stainless steel **1 piece**
- **Scouring pad** **1 piece**

## Kitchen Set Type B



### Purpose

This kitchen kit is a comprehensive -36piece set designed to meet the essential cooking and dining needs of families or individuals in humanitarian or emergency settings. It includes durable stainless steel cookware, utensils, and serving tools, ensuring practicality, longevity, and ease of use in challenging environments.

Kit

### Specifications

- **Bowl for food**, 1L, stainless steel **5 pieces**
- **Table fork**, stainless steel **5 pieces**
- **Table knife**, stainless steel **5 pieces**
- **Table spoon**, stainless steel, 10ml **5 pieces**
- **Soup spoon**, stainless steel, 15ml **5 pieces**
- **Frying Pan**, 2.5L, used as lid for the 7L cooking pot **1 piece**
- **Kitchen knife**, stainless steel blade 15cm, plastic handle **1 piece**
- **Cooking Pot**, 5L, stainless steel, diameter 22cm, with handles and lid **1 piece**
- **Cooking Pot**, 7L, stainless steel, diameter 24cm, with handle and lid **1 piece**
- **Stainless steel cup with handle**, 300ml **5 pieces**
- **Deep plate**, stainless steel, diameter 22cm, capacity 0.75L **5 pieces**
- **Wooden spoon** 30cm **1 piece**
- **Scouring pad** **1 piece**

## Blankets Bedding kit

Items in the kit must be requested separately, below are the quantities to request per household

Mattresses 4	Pillow cases 6	Pillows 6
Sleeping mats 6	Plastic film 1	Blankets 4



### Purpose

Woven polyester blanket for individual use, for warmth and sleeping in emergency shelters meant for temperate climates or summer season.

Part of Kit: Bedding kit

### Specifications

- **Make:** Knitted or woven, dry raised both sides, Type M temp
- **Content:** %100 pure polyester and/or acrylic fibres or polyester/cotton
- **Dimensions:** 150x 200cm
- **Weight:** 500g/m<sup>2</sup> minimum, maximum 1000g/m<sup>2</sup> weight determined by total weight/total surface
- **Thickness:** 9.5mm minimum
- Thermal resistant at  $R_{ct} = 0.25m^2$  and fire resistant.

## Mattresses *Bedding kit*

Items in the kit must be requested separately, below are the quantities to request per household

Mattresses 4	Pillow cases 6	Pillows 6
Sleeping mats 6	Plastic film 1	Blankets 4



### Purpose

A durable emergency-use mattress which offers both insulation and comfort for beneficiaries living in emergency shelters. It includes a dark-colored polyester/cotton cover for durability and easy maintenance in harsh environments.

**Part of Kit:** Bedding kit

### Specifications

- **Material:** Polyurethane closed cell foam.
- **Size:** 90 cm X 190 cm, 7 cm thickness
- **Grade:** 18kg/m3.
- **Cover:** One cover mixed polyester / cotton
- Vacuum sealed and rolled with 2 mattresses per roll

## Pillow Case *Bedding kit*

Items in the kit must be requested separately, below are the quantities to request per household

Mattresses 4	Pillow cases 6	Pillows 6
Sleeping mats 6	Plastic film 1	Blankets 4



### Purpose

A lightweight material to allow for increased hygiene in emergency context as a pillow covering.

**Part of Kit:** Bedding kit

### Specifications

- **Fabric:** %100 cotton
- **Size:** 40 x 70 cm

## Pillows Bedding kit

Items in the kit must be requested separately, below are the quantities to request per household

Mattresses 4	Pillow cases 6	Pillows 6
Sleeping mats 6	Plastic film 1	Blankets 4



### Purpose

A lightweight and durable pillow meant for providing safe and comfortable support in emergency settings.

**Part of Kit:** Bedding kit

### Specifications

- **100% vacuumed**
- Filling is cluster fiber (lightweight balled form, allowing air to pass freely through the fiber, maintaining its plump form without clumping or matting even through repeated use and washing)
- **Minimum weight: 600 gm**
- **Size: 40 x 70 cm**

## Plastic Film Bedding kit

Items in the kit must be requested separately, below are the quantities to request per household

Mattresses 4	Pillow cases 6	Pillows 6
Sleeping mats 6	Plastic film 1	Blankets 4



### Purpose

A durable plastic film designed for sealing openings in emergency settings. With a minimum width of 4 meters, it provides reliable protection against external elements, ensuring enhanced shelter resilience.

**Part of Kit:** Bedding kit

### Specifications

- **Rolls 4m x 12.5m at 0.3mm thick**
- **50 m2 per shelter**

## Sleeping Mats Bedding kit

Items in the kit must be requested separately, below are the quantities to request per household

Mattresses 4	Pillow cases 6	Pillows 6
Sleeping mats 6	Plastic film 1	Blankets 4



### Purpose

A lightweight and durable synthetic sleeping mat designed for emergency use under mattresses to keep the mattress off the ground and away from moisture as well as provide extra thermal resistance.

**Part of Kit:** Bedding kit

### Specifications

- **Material:** The mats should be made from 100 % synthetic yarns from either virgin, raw material or mixed with recycled fibres (for example such as recycled polyester).
- The synthetic yarns in a tightly woven 2/2 twill structure.
- **Sleeping mat finished size:** 180 x 90 cm ± 2%
- Sleeping mat area: 1.62 m<sup>2</sup> ± 2%
- **Weight:** 0.500 kg/m<sup>2</sup> minimum ± 5%
- **Tear Strength:** The edges of the mat should not be tearable when strongly pulled outside by hand or other similar force.

## Solar Lantern



### Purpose

A lightweight lantern that is rechargeable by included mini solar panel or by charge to provide light to families during emergency settings.

### Specifications

- **Included:** Lantern, female USD outlet, female micro-USD inlet for connecting the solar panel or charger, solar panel
- 3 positions, **high beam, medium beam, and low beam**; Battery charging indicator light
- **Full charge requires** 12 hours sunlight
- Low Self Discharge, **500+** charges
- Automatic protection against deep battery discharge and overcharge
- Foldable handle, hook, strap or other mechanism to suspend the lamp e.g. from tent pole or branch

## Summer Clothes: Infant Kit 0-2 Years

Each pallet contains boxes for 1 year and gender but a variety of pallets for the age range will be shared to meet the overall needs of the community

Infant kit (0)/boys and girls

Infant kit (2)/boys and girls

Infant kit (1)/boys and girls



### Purpose

A comprehensive summer clothing kit designed to meet the needs of infants. Each kit includes lightweight, durable clothing and essential hygiene products to ensure comfort, protection, and practicality in summer conditions. Clothing kits are unisex and each pallet contains kits of various sizes from ages 2-0 years old. All kits contain the same items in the associated size and are meant to meet the needs of 1 child.

Kit  Summer clothes 0-2

### Specifications

- **Baby blanket:** Baby blanket made of soft, lightweight cotton, dimensions 70 x 100 cm **1 piece**
- **Light weight baby suit:** 100% cotton, light weight, long sleeves and legs with socks **3 pieces**
- **Diapers:** **1 pack of 50 diapers**, leakproof with Lock Away Channels, with stretchy sides and large tape fasteners, hypoallergenic and free of parabens and latex
- **Pair of socks:** 100% cotton or 45% cotton 45% polyester, light weight **2 pieces**
- **Pajamas:** Baby summer pajamas set, soft cotton, skin friendly elastic waist and round collar; breathable comfortable for

- summer wear with long sleeves and legs **3 pieces**
- **Sun hat/cap:** Broad brimmed hat or legionnaire hat, cotton blended with other natural or synthetic fibers **1 piece**
- **Sunscreen for kids:** SPF (sun protection factor) of 30 or higher that protects against both UVA and UVB rays (a "broad-spectrum" sunscreen) and is water-resistant (protects kids while in the water for 40-80 minutes) **1 piece**
- **Shampoo :** Baby shampoo with loofa



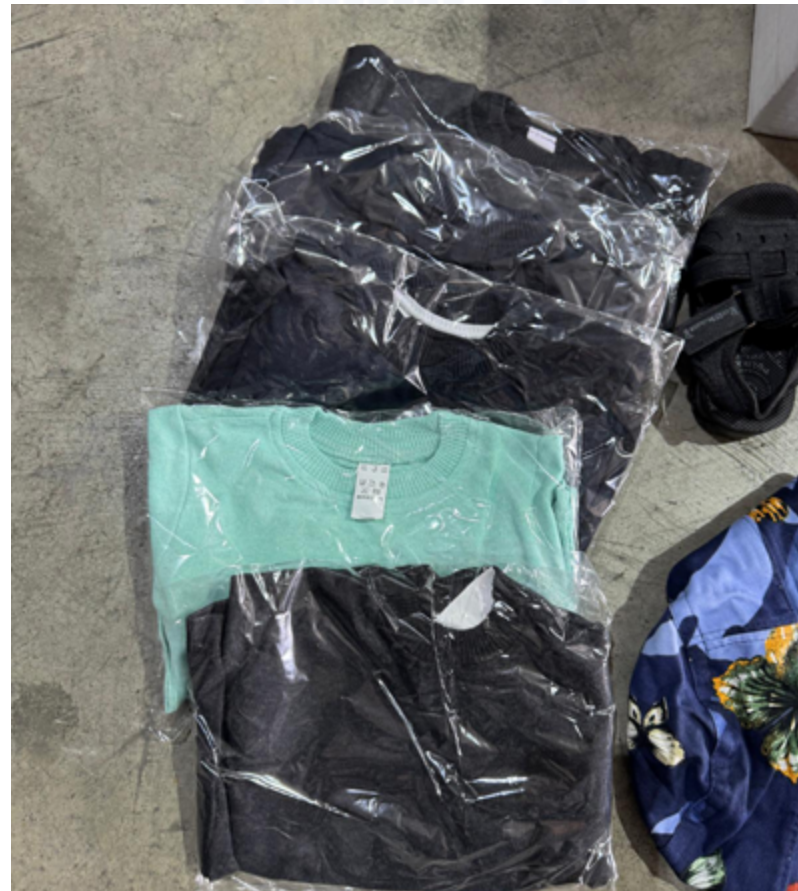
## Summer Clothes: Toddler Kit 3-5 Years

Each pallet contains boxes for 1 year and gender but a variety of pallets for the age range will be shared to meet the overall needs of the community

Toddler kit (3)/boys and girls

Toddler kit (5)/boys and girls

Toddler kit (4)/boys and girls



### Purpose

A comprehensive summer clothing kit designed to meet the needs of toddlers (ages 3-5 years). Each kit includes lightweight, durable clothing and essential hygiene products to ensure comfort, protection, and practicality in summer conditions. Clothing kits are unisex and each pallet contains kits of various sizes from ages 3-5 years old. All kits contain the same items in the associated size and are meant to meet the needs of 1 child.

### Kit

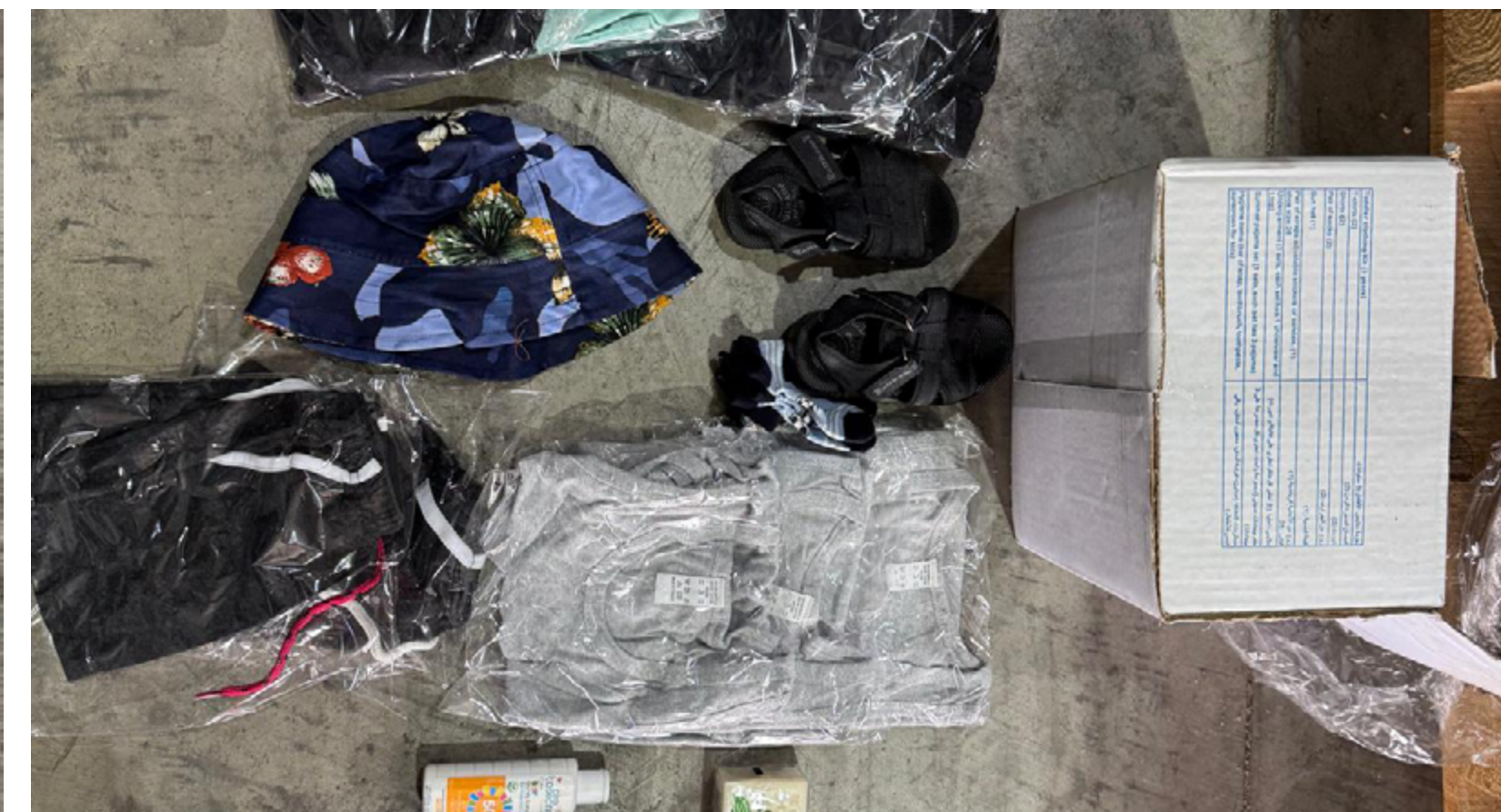
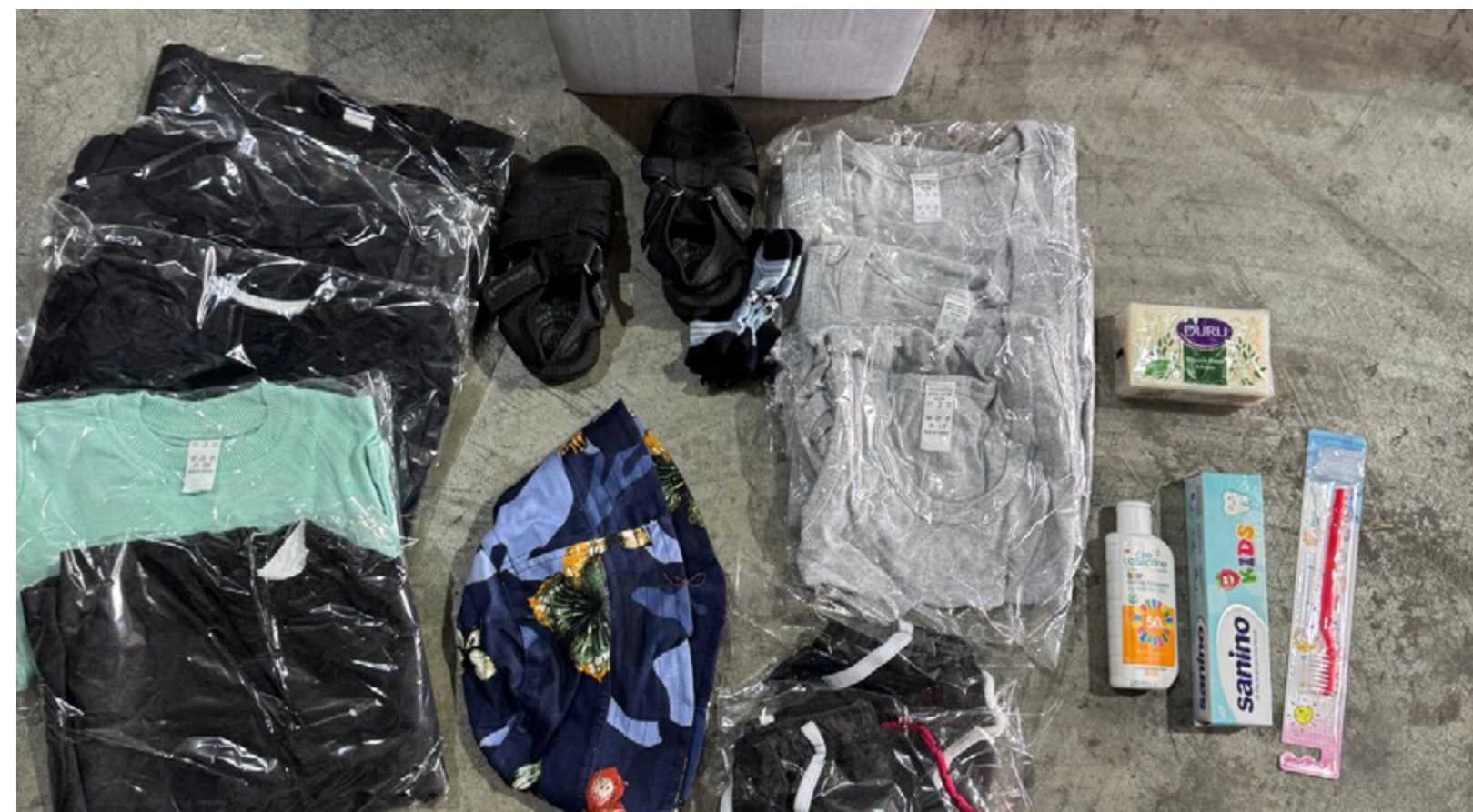
Summer clothes 3-5

### Specifications

- **Pair of socks:** 100% cotton or 45% cotton 45% polyester; light weight **2 pieces**
- **Pajamas:** Summer pajamas set, soft cotton, skin friendly elastic waist and round collar; breathable comfortable for summer wear with long sleeves and legs **3 pieces**
- **T-shirt:** Children's t-shirt, short sleeves. Round neck and twin needle hems, with a hidden seam at the neck; material Composition: 45% cotton 45% polyester and 10% elastin **2 pieces**
- **Shorts:** Cotton and polyester mix, short legs, colors for boys and girls **2 pieces**
- **Shoes/sneakers or sandals:** Waterproof footwear made using quick-drying

- materials. Easy-on footwear, Reinforced toe and heel, Single riptape and elasticated lace fastening, withstand long hours of walking **1 pair**
- **Sun hat/cap:** Broad brimmed hat or legionnaire hat, cotton blended with other natural or synthetic fibers **1 piece**
- **Sunscreen for kids:** SPF (sun protection factor) of 30 or higher that protects against both UVA and UVB rays (a "broad-spectrum" sunscreen) and is water-resistant (protects kids while in the water for 40-80 minutes) **1 piece**
- **Soap: 250 g,** for use in salty water
- **Toothpaste:** Fluoride 0.1% (1000ppm), tube volume 100ml or more, with 3 years shelf life **1 piece**

- **Toothbrush:** A medium or hard-bristled brush **1 piece**



## Summer Clothes: Children Kit 6-11 Years

Each pallet contains boxes for 1 year and gender but a variety of pallets for the age range will be shared to meet the overall needs of the community

Boys kit 6 years	Boys kit 7 years	Girls kit 7 years	Girls kit 8 years
Boys kit 8 years	Boys kit 9 years	Girls kit 9 years	Girls kit 10 years
Boys kit 10 years	Boys kit 11 years	Girls kit 11 years	



### Purpose

A comprehensive summer clothing kit designed to meet the needs of children ages 6-11 years, with tailored items for boys and girls. Each kit includes lightweight, durable clothing and essential hygiene products to ensure comfort, protection, and practicality in summer conditions. All kits contain the same items in the associated size and are meant to meet the needs of 1 child.

Kit  Summer clothes 6-11

### Specifications

- Pair of socks:** 100% cotton or : 45% cotton 45% polyester; light weight, light color; for both girls and boys **2 pairs**
- Summer pajama set: Summer woolen pajama set **2 sets**
- T-shirt:** children's t-shirt, short sleeves. Round neck and twin needle hems, with a hidden seam at the neck, mixed composition of cotton and polyester; Flat knit with a round neck and short sleeves **2 pieces**
- Skirt/Trousers:** Summer woolen dress colorful for girls' kit **1 piece** with long sleeves and is below knees for the height; Summer trouser with strong fabric for boys **1 piece**
- Shoes/sneakers or sandals:** Waterproof footwear made using quick-drying materials. Easy-on footwear; reinforced toe and heel, single riptape and elasticated lace fastening, withstand long hours of walking **1 pair**
- Undergarments:** top and bottom
- Sun hat/cap: Broad brimmed hat or legionnaire hat, cotton blended with other natural or synthetic fibers **3 sets**
- Sunscreen for kids:** SPF (sun protection factor) of 30 or higher that protects against both UVA and UVB rays (a "broad-spectrum" sunscreen) and is water-resistant (protects kids while in the water for 40–80 minutes) **1 piece**
- Soap:** **250 g**, for use in salty water
- Toothpaste:** Fluoride 0.1% (1000ppm), tube volume **100ml** or more, with 3 years shelf life **1 piece**



## Summer Clothes: Boys Kit 12-15 Years

Each pallet contains boxes for 1 year and gender but a variety of pallets for the age range will be shared to meet the overall needs of the community

- Boys kit 12 years
- Boys kit 14 years
- Boys kit 13 years
- Boys kit 15 years



### Purpose

A comprehensive summer clothing kit designed to meet the needs of pre-teen/teenage boys (12-15 years). Each kit includes lightweight, durable clothing and essential hygiene products to ensure comfort, protection, and practicality in summer conditions. All kits contain the same items in the associated size and are meant to meet the needs of 1 child.

Kit  Summer clothes 12-15

### Specifications

- **Pair of socks:** 100% cotton or : 45% cotton 45% polyester, light weight **2 pairs**
- **Summer pajama set:** Two-piece (top and bottom), soft cotton, skin friendly elastic waist and round collar breathable comfortable for summer wear with long sleeves and legs, not from recyclable materials **3 sets**
- **T-shirt:** Round neck and twin needle hems, with a hidden seam at the neck. Cotton and polyester blend **2 pieces**
- **Shoes/sneakers or sandals:** Waterproof footwear made using quick-drying materials. Easy-on footwear, reinforced toe and heel, single riptape and elasticated lace fastening, withstand long hours of walking **1 pair**
- **Sun hat/cap:** Broad brimmed hat or legionnaire hat. Cotton blended with other natural or synthetic fibers, like linen, rayon, or polyester **1 piece**
- **Sunscreen for 12+:** SPF (sun protection factor) of 30 or higher: protects against both UVA and UVB rays (a "broad-spectrum" sunscreen) is water-resistant (protects kids while in the water for 40-80 minutes) that suits above 12 years **1 piece**
- **Undergarment:** **3 pieces**
- **Soap:** **250 g**, for use in salty water
- **Toothpaste:** Contains an abrasive 10-40%, humictant 20-70%, water 5-30%, binder 1-2%, detergent 1-3%, flavour

1-2%, preservative 0.05-0.5%, and therapeutic agent 0.1%, fluoride 0.1% (1000ppm), tube volume **100ml** or more, with 3 years shelf life. **QTY 1 per kit**

**Toothbrush:** A medium or hard-bristled brush, a soft-bristled toothbrush is less densely packed. This means that the bristles can bend easier and are gentler on teeth and gums. **QTY 1 per kit**



## Summer Clothes: Girls Kit 12-15 Years

Each pallet contains boxes for 1 year and gender but a variety of pallets for the age range will be shared to meet the overall needs of the community

- Girls kit 12 years
- Girls kit 14 years
- Girls kit 13 years
- Girls kit 15 years



### I Purpose

A comprehensive summer clothing kit designed to meet the needs of pre-teen/teenage girls (12-15 years). Each kit includes lightweight, durable clothing and essential hygiene products to ensure comfort, protection, and practicality in summer conditions. All kits contain the same items in the associated size and are meant to meet the needs of 1 child.

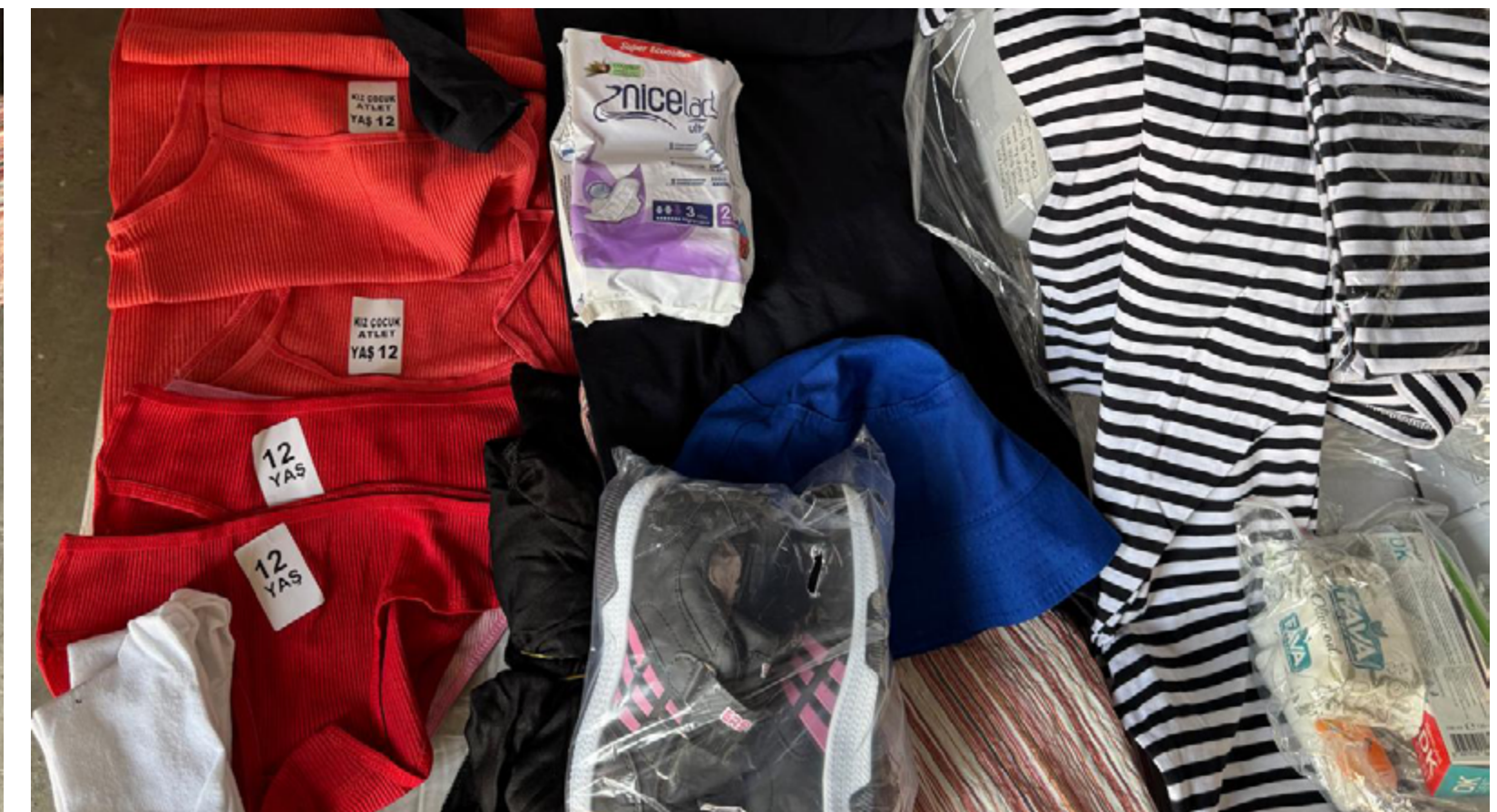
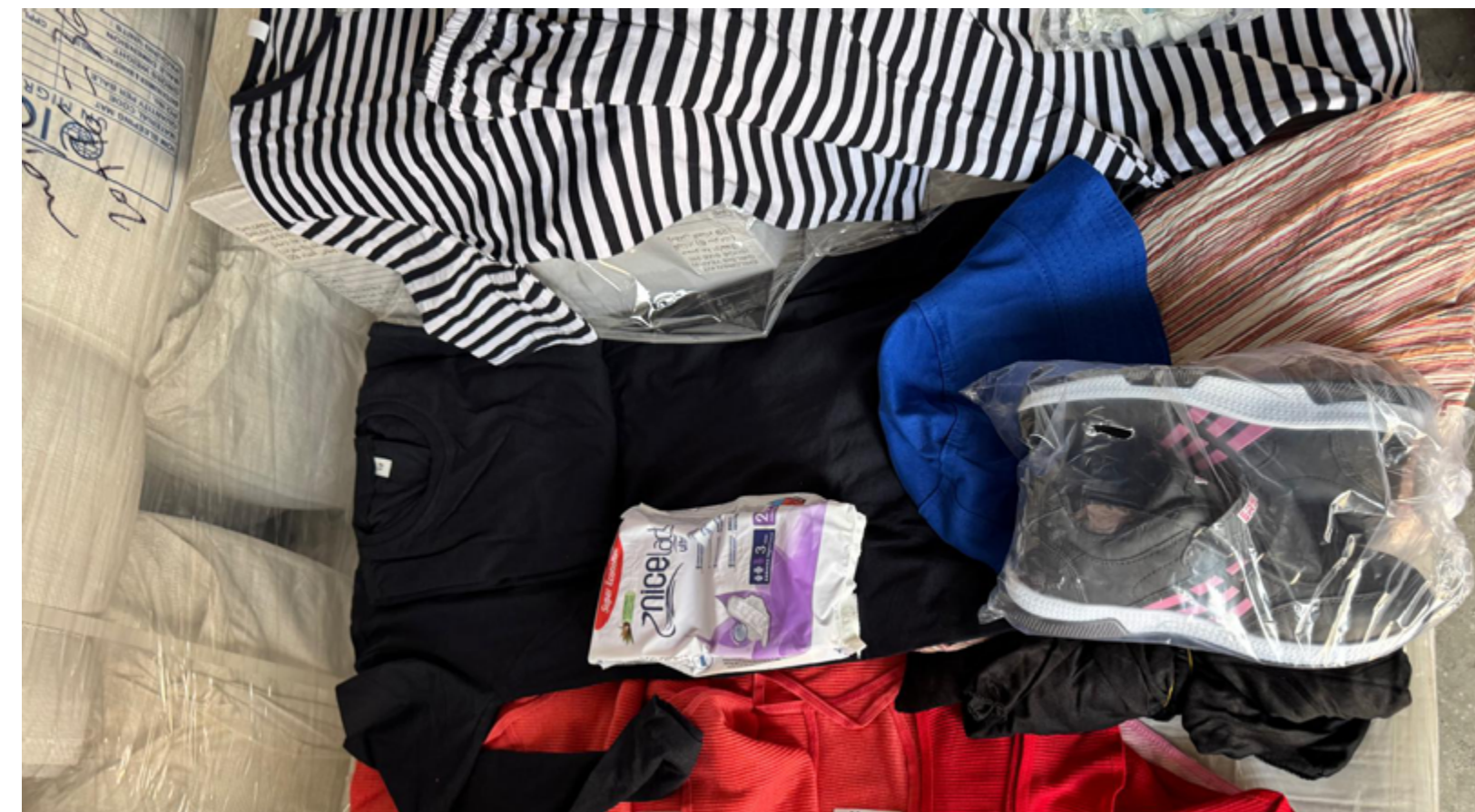
Kit  Summer clothes 12-15

### I Specifications

- **Pair of socks:** 100% cotton or : 45% cotton 45% polyester; light weight **2 pairs**
- **Summer pajama set:** **Two-piece** (top and bottom), soft cotton, skin friendly elastic waist and round collar breathable comfortable for summer wear with long sleeves and legs, not from recyclable materials **3 sets**
- **Long Skirt:** Lightweight, breathable, woolen **2 pieces**
- **Long sleeve shirt:** Shirt with round neck, woolen with long sleeves **2 pieces**
- **Headscarf:** Cotton and soft **1 piece**
- **Shoes/sneakers or sandals:** Waterproof footwear made using quick-drying materials. Easy-on footwear, reinforced toe and heel, single riptape and elasticated

- lace fastening, withstand long hours of walking **1 pair**
- **Undergarment:** **3 pieces**
- **Sun hat/cap:** Broad brimmed hat or legionnaire hat, for both girls and boys with light color; different colors, specs attached for both. Cotton blended with other natural or synthetic fibers, like linen, rayon, polyester, paper.
- **Sunscreen for 12+:** SPF (sun protection factor) of 30 or higher. protects against both UVA and UVB rays (a "broad-spectrum" sunscreen) is water-resistant (protects kids while in the water for 40–80 minutes) that suits above 12 years. **40–80 minutes) 1 piece**
- **Soap:** **250 g**, for use in salty water

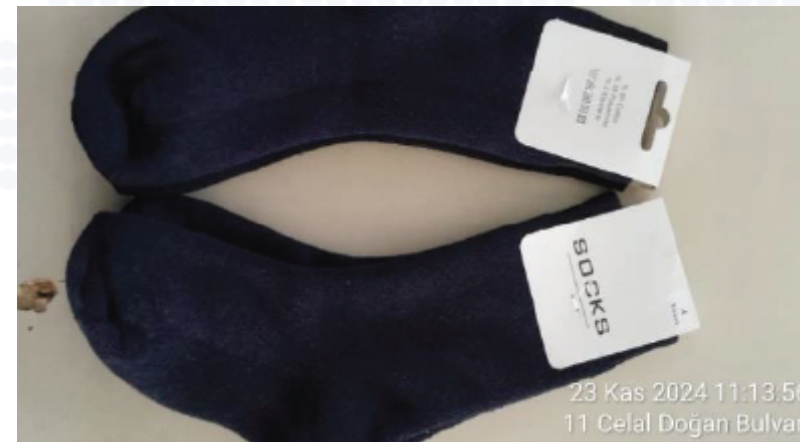
- **Sanitary pads:** **2 packs of 20** disposable pads, 5mm thick, winged, super slim
- **Toothpaste:** Contains an abrasive 10-40%, humectant 20-70%, water 5-30%, binder 1-2%, detergent 1-3%, flavour 1-2%, preservative 0.05-0.5%, and therapeutic agent 0.1%, fluoride 0.1% (1000ppm), tube volume 100ml or more, with 3 years shelf life. **QTY 1 per kit**
- **Toothbrush:** A medium or hard-bristled brush, a soft-bristled toothbrush is less densely packed. This means that the bristles can bend easier and are gentler on teeth and gums. **QTY 1 per kit**



## Winter Clothes: Infant/Toddler Kit 0-5 Years

Each pallet contains boxes for 1 year and gender but a variety of pallets for the age range will be shared to meet the overall needs of the community

- |                  |                  |                   |                   |
|------------------|------------------|-------------------|-------------------|
| Boys kit 6 years | Boys kit 7 years | Girls kit 6 years | Girls kit 7 years |
| Boys kit 8 years | Boys kit 9 years | Girls kit 8 years | Girls kit 9 years |



### Purpose

A comprehensive winter clothing kit designed to meet the needs of infants and/or toddlers (ages 5-0 years). Each kit includes thermal or wool material, durable clothing and essential hygiene products to ensure comfort, protection, and practicality in winter conditions.

Kit  Winter clothes 0-5

### Specifications

- Baby blanket:** Baby blanket made of merino wool or fleece 70 x 100 cm / *1 piece*
- Gloves:** Top of the hand, 150g high loft wadding. Underside of the hand, 200g Brushed lining. No frayed threads and broken stitches / *1 pair*
- Diapers:** 1 pack of 50 diapers, leakproof with Lock Away Channels, with stretchy sides and large tape fasteners, hypoallergenic and free of parabens and latex
- Thermal underwear:** 2 piece set thick woolen set, 100% cotton, Long sleeves and fitted sleeve edges. Fitted trouser bottoms. Brushed fabric for added warmth. Lightly breathable base layer, light perspiration wicking / *2 sets*
- Jacket:** Wool or mixed durable fabric / *1 piece*
- Sweater and trouser:** Main fabric: 100% cotton or mixed durable fabric (65% cotton and 35% polyester). Comfortable molded and well stitched. Two pockets on each side and one pocket at the back. Elastic waistband for children's sizes. Leg cuff should be sewed
- Shoes/sneakers or boots:** Waterproof footwear made using quick-drying materials. Easy-on footwear, Reinforced toe and heel, Single riptape and elasticated lace fastening, withstand long hours of walking / *1 pair*
- Pair of socks:** Thick winter socks / *2 pairs*
- Pajamas:** Thick winter pajamas set, soft cotton, skin friendly elastic waist and round collar; breathable comfortable for summer wear with long sleeves and legs / *2 pairs*
- Woolen hat:** 100% acrylic double folded or woolen warm and lined component to cover the ears and insulate the head



## Winter Clothes: Children Kit 6-11 Years

Each pallet contains boxes for 1 year and gender but a variety of pallets for the age range will be shared to meet the overall needs of the community

Boys kit 6 years	Boys kit 7 years	Girls kit 6 years	Girls kit 7 years
Boys kit 8 years	Boys kit 9 years	Girls kit 8 years	Girls kit 9 years
Boys kit 10 years	Boys kit 11 years	Girls kit 10 years	Girls kit 11 years



### Purpose

A comprehensive winter clothing kit designed to meet the needs of boys and girls (ages 11-6 years). Each kit includes thermal or wool material, durable clothing to ensure comfort, protection, and practicality in winter conditions.

### Kit

Winter clothes 6-11

### Specifications

- Pair of socks:** Thick winter socks **2 pairs**
- Woolen hat:** 100% acrylic double folded or woolen warm and lined component to cover the ears and insulate the head **1 piece**
- Gloves:** Top of the hand, 150g high loft wadding. Underside of the hand, 200g Brushed lining. No frayed threads and broken stitches **1 pair**
- Undergarment:** 100% polyester 2 piece set top and bottom, Long sleeves and fitted sleeve edges. Fitted trouser bottoms. Brushed fabric for added warmth. Lightly breathable base layer, light perspiration wicking **2 sets**
- Jacket:** Wool or mixed durable fabric **1 piece**
- Sweater and trouser/skirt:** Main fabric: 100% cotton or mixed durable fabric (65% cotton and 35% polyester). Comfortable molded and well stitched. Two pockets on each side and one pocket at the back. Elastic waistband for children's sizes. Leg cuff should be sewed
- Shoes/sneakers or boots:** Waterproof footwear made using quick-drying materials. Easy-on footwear, Reinforced toe and heel, Single riptape and elasticated lace fastening, withstand long hours of walking **1 pair**



## Winter Clothes: Boys Kit 12-15 Years

Each pallet contains boxes for 1 year and gender but a variety of pallets for the age range will be shared to meet the overall needs of the community

Winter clothes: Boys kit 12 years

Winter clothes: Boys kit 14 years

Winter clothes: Boys kit 13 years

Winter clothes: Boys kit 15 years



### I Purpose

A comprehensive winter clothing kit designed to meet the needs of pre-teens/teens boys ages 15-12. Each kit is meant to meet the needs for one child and includes thermal or wool material, durable clothing to ensure comfort, protection, and practicality in winter conditions.

Kit  Winter clothes 12-15

### I Specifications

- **Pair of socks:** Thick winter socks **2 pairs**
- **Woolen hat:** 100% acrylic double folded or woolen warm and lined component to cover the ears and insulate the head **1 piece**
- **Gloves:** Top of the hand, 150g high loft wadding. Underside of the hand, 200g Brushed lining. No frayed threads and broken stitches **1 pair**
- **Undergarment:** 100% polyester 2 piece set top and bottom, Long sleeves and fitted sleeve edges. Fitted trouser bottoms. Brushed fabric for added warmth. Lightly breathable base layer, light perspiration wicking **2 sets**
- **Jacket:** Wool or mixed durable fabric **1 piece**
- **Sweater and trouser:** Main fabric 100% cotton or mixed durable fabric (65% cotton and 35% polyester). Comfortable molded and well stitched. **1 set**
- **Shoes/sneakers or boots:** Waterproof footwear made using quick-drying materials. Easy-on footwear, Reinforced toe and heel, Single riptape and elasticated lace fastening, withstand long hours of walking **1 pair**



## Winter Clothes: Girls Kit 12 -15 Years

Each pallet contains boxes for 1 year and gender but a variety of pallets for the age range will be shared to meet the overall needs of the community

- Girls kit 12 years
- Girls kit 14 years
- Girls kit 13 years
- Girls kit 15 years



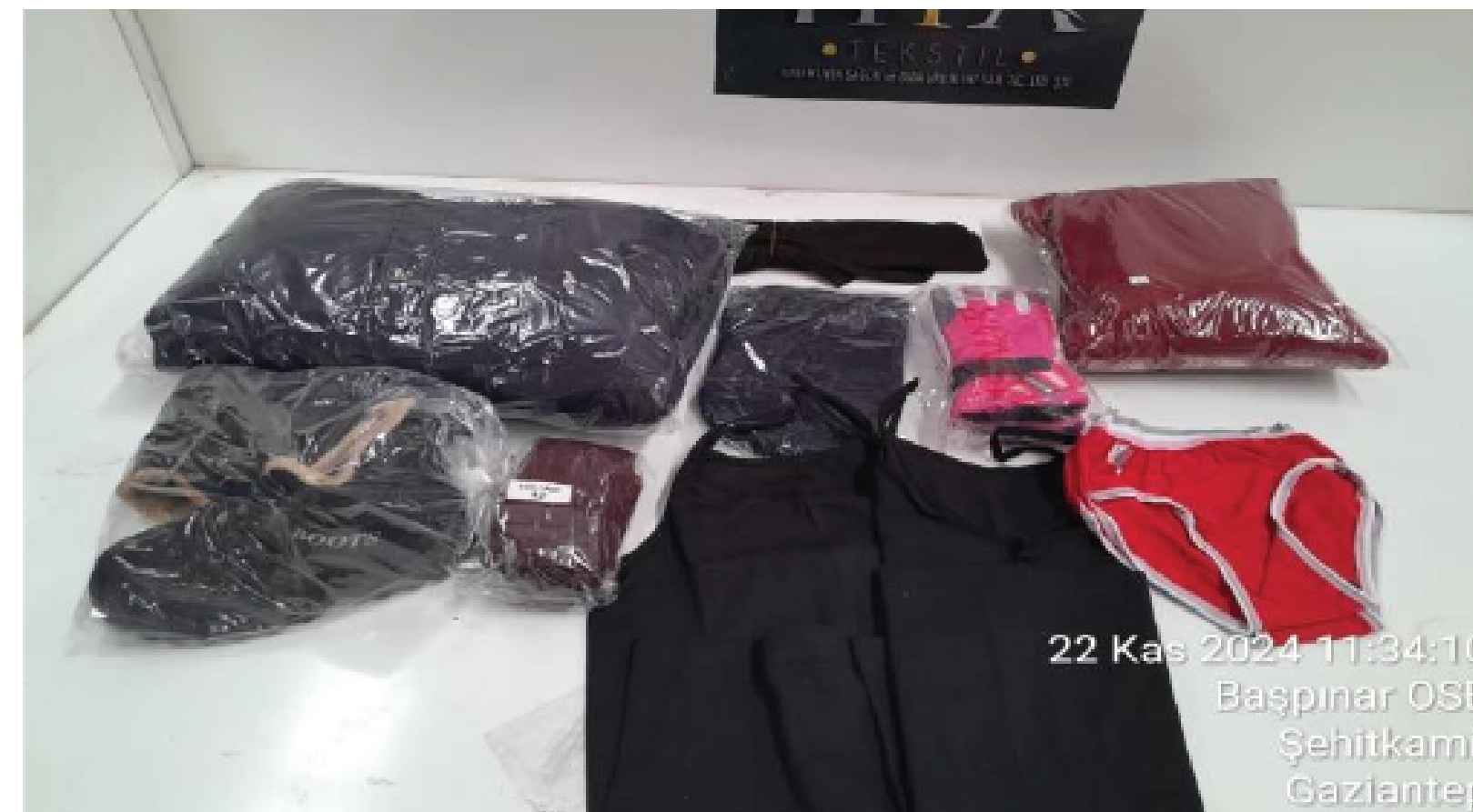
### Purpose

A comprehensive winter clothing kit designed to meet the needs of pre-teens/teens girls ages 15-12. Each kit is meant to meet the needs for one child and includes thermal or wool material, durable clothing to ensure comfort, protection, and practicality in winter conditions.

Kit  Winter clothes 12-15

### Specifications

- **Pair of socks:** Thick winter socks **2 pairs**
- **Woolen hat:** 100% acrylic double folded or woolen warm and lined component to cover the ears and insulate the head **1 piece**
- **Gloves:** Top of the hand, 150g high loft wadding. Underside of the hand, 200g Brushed lining. No frayed threads and broken stitches **1 pair**
- **Undergarment:** 100% polyester **2 piece** set top and bottom, Long sleeves and fitted sleeve edges. Fitted trouser bottoms. Brushed fabric for added warmth. Lightly breathable base layer, light perspiration wicking **2 sets**
- **Jacket:** Wool or mixed durable fabric **1 piece**
- **Sweater and skirt:** Main fabric: 100% cotton or mixed durable fabric (65% cotton and 35% polyester). Comfortable molded and well stitched. **1 set**
- **Scarf:** Thick material woolen or mixed durable fabric **1 piece**
- **Shoes/sneakers or boots:** Waterproof footwear made using quick-drying materials. Easy-on footwear, Reinforced toe and heel, Single riptape and elasticated lace fastening, withstand long hours of walking **1 pair**





COMMON PIPELINE PROGRAMME

# WATER, SANITATION AND HYGIENE **WASH**

## Bladder (10m<sup>3</sup>)



### Purpose

This bladder is a durable and reliable solution for temporary water storage, designed for use in humanitarian or emergency settings. This is not meant for transporting water.

### Specifications

- Made from UV-resistant, food-grade PVC-coated polyester fabric, this 10m<sup>3</sup> pillow tank ensures safe storage of chlorinated drinking water, with heat-welded seams and secure inlet and outlet fittings for efficient operation.
- **Components included:**
  - 1 10m<sup>3</sup> bladder tank
  - 1 Valve, Gate, 2"
  - 1 Groundsheet
  - 1 Holdall bag
  - 1 Bush, Reducing, 1" BSP(M) × 1" BSP(F), GI
  - 1 Adapter, Compression, 32mm
- 1 Tee, Compression, 32mm
- 1 Repair kit - without glue
- 4 PTFE tape roll
- 2 Nipple, hex, 2" BSP(M), GI
- 2 Guillemin hose tail coupling, DN50 – 2"
- 2 Guillemin coupling, DN50 – 2" BSP(M)

## Bladder (20m<sup>3</sup>)



### Purpose

This bladder is a durable and reliable solution for temporary water storage, designed for use in humanitarian or emergency settings. This is not meant for transporting water.

### Specifications

- Made from UV-resistant, food-grade PVC-coated polyester fabric, this 20m<sup>3</sup> pillow tank ensures safe storage of chlorinated drinking water, with heat-welded seams and secure inlet and outlet fittings for efficient operation.
- **Components included:**
  - 1 Bladder tank, 20m<sup>3</sup>
  - 1 Groundsheet
  - 1 Repair kit – no glue supplied
  - 1 Holdall bag
  - 2 Valve, Gate, 2"
  - 2 Bush, Reducing, 2" BSP(M) to 1" BSP(F), GI/Plastic
- 2 Adapter, Compression, 32mm - 1" BSP(M), PE
- 2 Tee, Compression, 32mm
- 2 Nipple, 2" BSP(M), Plastic
- 2 Guillemin Hose Tail DN50
- 2 Guillemin coupling DN50 to BSP(M), with locking ring and sealing washer
- 4 Tape, PTFE, roll

## Bladder (5m<sup>3</sup>)



### Purpose

This bladder is a durable and reliable solution for temporary water storage, designed for use in humanitarian or emergency settings. This is not meant for transporting water.

### Specifications

- Made from UV-resistant, food-grade PVC-coated polyester fabric, this 20m<sup>3</sup> pillow tank ensures safe storage of chlorinated drinking water, with heat-welded seams and secure inlet and outlet fittings for efficient operation.
- **Components included:**
  - 1 Bladder tank, 5m<sup>3</sup>
  - 1 Groundsheet
  - 1 Repair kit – no glue supplied
  - 1 Holdall bag
  - 1 Valve, Gate, 2"
  - 1 Bush, Reducing, 2" BSP(M) to 1" BSP(F), GI/Plastic
- 1 Adapter, Compression, 32mm - 1" BSP(M), PE
- 1 Tee, Compression, 32mm
- 2 Nipple, 2" BSP(M), GI
- 2 Guillemin Hose Tail DN50 - 2"
- 2 Guillemin coupling DN50 to BSP(M)
- 4 Tape, P

## Bucket, Plastic, 14L, Heavy Duty Plastic



### Purpose

Multi-purpose, heavy-duty plastic bucket, with handle and lid with attached clip-on cap to be used as water storage in emergency settings.

### Specifications

- **Material:** Virgin food grade HDPE high density polyethylene, and virgin LDPE low density polyethylene
- **Dimensions:** Height: 300mm - Top diameter: 300mm - Bottom diameter: 240mm.
- Cover with outlet of 50mm +/- 10% and clip cap.
- **Capacity:** 14L
- **Weight:** Bucket 600g, cover 150g, handle 30g
- Reinforced bottom ridge to prevent scraping of the base, Reinforced top to prevent ovaling.

## Chlorine Tablets



### Purpose

Chlorine tablets designed for emergency water purification and disinfection, ensuring safe and clean drinking water in crisis settings. Compact and effective, they are ideal for treating contaminated water by killing bacteria, viruses, and other harmful pathogens.

### Specifications

- Water purification tablets, 33mg or 67mg/box, 16,000 t/box

## Cleaning and Disinfection Kit



### Purpose

Cleaning and disinfection kits are designed to promote household hygiene and cleanliness for emergency shelters, contributing to overall health and dignify of families living in displacement.

Kit



### Specifications

- Cleaning kit:**
- Premixed surface cleaner** (with 1 liter spray bottle). **5 Bottles**
- Plastic Toilet bowl brush with strong plastic handle**
- Toilet Plastic Trash Can with swing Lid** (20L). **5 Can**
- Trash bags for the toilet Trash Can** (20L). **5 Packs**
- Soft Broom with strong woody base,** dimensions: 30 \* 6 \* 3 cm, bristles (length: 7cm, thickness: 20 bristles / cm<sup>2</sup> at least) with strong woody handle (length: 1.5m, thickness: 3/4"). **5 Pieces**
- Hard Broom with strong woody base,** dimensions: 30 \* 6 \* 3 cm, bristles (length: 7cm, thickness: 20 bristles / cm<sup>2</sup> at least) with strong woody handle (length: 1.5m, thickness: 3/4"). **5 Pieces**
- Floor mop with strong woody handle** (length: 1.5m at least and it should be fixed strongly). **5 Pieces**
- Face masks for cleaning** (hard masks). **20 Pieces**
- Plastic Buckets for water collection for cleaning,** capacity 20 - Pieces - 5
- Clean cloth for floor drying** (40\*60 cm). **20 Pieces**
- Clean cloth for surfaces and items cleaning** (30\*30 cm). **50 Pieces**
- Sponges to clean surfaces and items.** **50 Pieces**
- Gloves, heavy-duty rubber work glove,** rubber cover, cotton woven lining, length 30 cm. **10 Pairs**
- Floor and surfaces cleaning detergents,** capacity 4L - Gallon of 4L - 7
- Disposable Waste bags 50 L** (color: Yellow). **10 Kgs**
- Plastic waste bin (60 liters)** - Pieces - 5
- Alcohol Disinfectant:** 70% ethyl alcohol, 1L. **7 Bottles**

## Collapsible Jerrycan 10L



### I Purpose

Square or rectangular shape collapsible plastic jerrycan for household water collection and storage, up to 10 litre capacity.

### I Specifications

- **Jerrycan - Plastic - Foldable - 10L**
- **Capacity** 10L
- **Weight** 180g for the 10L type, 270g for the 20L type
- Material Manufactured of food grade LDPE should not contain toxic elements according to EN 1186 & EN 13130 and shall comply with Regulation (EU) 10/2011 and its amendments. Must stand by itself, even when filled to 1/4 of its maximum volume.
- **Average thickness** 0.6mm and minimum corner thickness 0.5mm
- **Fitted with**
- One built-in carrying handle for the 10L type, and one or two built-in carrying handles for

the 20L type, with minimum internal handle dimensions of 9 cm long and 3 cm high, with no sharp edges.

- The handles must resist the traction test when filled up to the top with water for 10min. Handles should not break or crack.
- A screwable cap with integrated tap for filling and discharge that is linked to the container by a 1mmx120mm polyamide string. String tensile strength of 20N minimum.
- Strictly no leakage should be found when filled up to the top with water and after being for 10 minutes in upside down position.
- **Inner diameter of the cap:** Minimum 30mm for both 10L and 20L types.

• **Impact Resistance / Drop Test** The collapsible jerrycan must be impact resistant on a hard smooth concrete surface when filled with maximum volume of water (10L or 15L or 20L) at ambient temperature. The complete drop test consists of 10 consecutive drops from 2m high. The jerrycan must be elevated on a remote-activated rocking platform, so that the lowest point is at 2m from the ground. Test result is expressed as a product ranking according to the number of drops passed without damages or leakage. To be accepted, the jerrycan must resist to minimum 3 drops.

## Infant Diapers 0-3 Months



### I Purpose

Newborn diapers for children weighing 2-5kg

### I Specifications

- **Material:** Petrolatum, Alcohol, and Aloe Leaf Extract.
- leakproof with Lock Away Channels, with stretchy sides and large tape fasteners, hypoallergenic and free of parabens and latex.
- **40 diapers per pack** and **5 packs per bale.**

## Infant Diapers 3-6 Months



### Purpose

Infant diapers for children weighing 3-6kg

### Specifications

- **Material:** Petrolatum, Alcohol, and Aloe Leaf Extract.
- leakproof with Lock Away Channels, with stretchy sides and large tape fasteners, hypoallergenic and free of parabens and latex.
- *40 diapers per pack and 5 packs per bale.*

## Infant Diapers 6-12 Months



### Purpose

Infant diapers for children weighing 4-9kg

### Specifications

- **Material:** Petrolatum, Alcohol, and Aloe Leaf Extract.
- leakproof with Lock Away Channels, with stretchy sides and large tape fasteners, hypoallergenic and free of parabens and latex.
- *34 diapers per pack and 6 packs per bale.*

## Duo Latrine



### Purpose

Easy to assemble, durable, mobile latrine superstructure for first phase emergencies at makeshift sites, with two adjacent stalls intended for gender separation.

### Specifications

- Duo Latrine Superstructure List of Components
- Qty Description
- **Latrine Cubicle (Duo) with Roof,** Comprising:
  - 1 **Left squatting plates** 1.20 x 0.80 x 0.30 (m)-Plastic
  - 1 **Right Squatting Plates** 1.20 x 0.80 x 0.30 (m)- Plastic
  - 1 **Partition wall panel-Plastic**
  - 1 **Right rear corner panel-Plastic**
  - 1 **Right front corner panel- Plastic**
  - 1 **Left back wall panel-Plastic**
  - 1 **Right back wall panel-Plastic**
- 1 **Left side wall panel-Plastic** bolt
- 1 **Right side wall panel-Plastic**
- 2 **Door panel-Plastic,** except of two aluminum light weight bars
- 1 **Left roof panel- light weigh Aluminum**
- 1 **Right roof panel- light weigh Aluminum**
- **Accessories Bag**
- 70 **M8 x 25 bolt with flat head- Metal Bolt**
- 4 **M8 x 40 bolt with flat head-Metal Bolt**
- 8 **M8 x 70 bolt with flat head-Metal**
- 82 **M8 Nut-Metal Nut**
- 8 **“L”Shaped bracket- Metal bracket**
- 1 **Assembling Instruction Manual-Paper**
- 2 **No:13 Socket spanner-Metal**
- 2 **3”” Screwdriver- plastic handle, metal head**
- **Packing List for Shipment Dimensions:** 1.85 x 1.25 x 0.25m
- **Net Weight:** 65.00kg
- **HS Code:**3925900000

## Handrail + Seat For Latrines



### Purpose

Seat with handrail for use with mobile or pit latrines, supports people with disabilities

### Specifications

- The Seat with Handrail each unit includes:
  - 2 x **600mm x 600mm stand frame,** Welded with **22 x 1.2mm** thickness, **steel pipe.**
  - 2 x **22 x 520mm x 1.2mm** thickness by support **steel pipe** with **M6 x 10mm** roofing bolt
  - 1 x **seat with key hole fixing clamping,** one-piece design, and it is injection molded from PP plastic
  - 20 x **M5 x 5.0mm** stainless steel screw

## Hose



### Purpose

A 30m coil of 3" flexible reinforced hose, for use in pumping, connecting of water tanks, and for temporary installations.

### Specifications

- Outside diameter **86 mm**
- Inside diameter **75 mm**
- Working pressure **4 bar**
- Burst pressure **8 bar**

## Hygiene Kits



### Purpose

Hygiene kits are designed to promote individual and family hygiene within a household to combat the spread of diseases and bacteria while living in displacement and/or emergency shelters. Special consideration is taken to ensure gender and cultural sensitivities that promote the restoration of an individual's dignity.

### Specifications

- **Handwashing soap**, weight: 100 gm/pc, with 3 years shelf life **QTY 8 per kit**
- **Adult shampoo**, 700 ml, pH: 6.70, NaCl: 0.94%, Active matter: 10.5%. **Packing:** bottle with push pull cap. Includes expiry date with 3 years shelf life. **QTY 1 per kit**
- **Gentle baby shampoo equivalent to Johnson&Johnson**, 500 ml, Gentle and mild to the eyes, doesn't irritate the skin, Soap-free, allergy tested, Alcohol: free, pH: 5.5 **Packing:** bottle with push pull cap. Includes expiry date with 3 years shelf life. **QTY 1 per kit**
- **Laundry soap bar**, Weight: 380 gm, pH: 9.50-11.00, Phosphate (P2O5): free, Silicon dioxide (SiO2): n/a, ingredients : water softener, processing aid, Active matter: 5-10% (anionic + non-ionic), Solubility: > 95% **QTY 1 per kit**
- **Toothpaste:** contains an abrasive 10-40%, humectant 20-70%, water 5-30%, binder 1-2%, detergent 1-3%, flavour 1-2%, preservative 0.05-0.5%, and therapeutic

Kit



- agent 0.1%, fluoride 0.1% (1000ppm), tube volume 100ml or more, with 3 years shelf life. **QTY 2 per kit**, along with Tooth brush a medium or hard-bristled brush, a soft-bristled toothbrush is less densely packed. This means that the bristles can bend easier and are gentler on teeth and gums. **6 per kit**
- **Wet wipes** include **80 pieces** PH 5.5 with Olivera, alcoholic free, with 3 years shelf life. **QTY 2 per kit** size ( 8" \*4 ")
- **Toilet paper**, pack of **32 rolls**, Composition: 100% cellulose paper; three ply, Size: (100mm x 120 mm each sheet), Sheets: 162 per roll, with clear separation at the perforations **QTY 1 per kit**
- **Women hygienic sanitary pads**, Thickness: 5 mm, Type: winged, super-slim, Packing: LDPE bag containing 20 folded units, individually wrapped **QTY 2 per kit**
- **Disinfecting solution** for cleaning shelter/house/toilets similar to Dettol (750 ml) **QTY 1 per kit**
- **Disposable plastic razor blade**, **Type:** twin stainless-steel blade and lubricant strip, Handle length: 100 mm,

- Blade thickness: 0.8 mm, Color: dark blue **Packing:** pack containing 8 units **QTY 1 per kit**
- **Shaving cream**, Volume: 100 ml (100 g), pH: 6.50-7.50, Alcohol: free, Packing: aluminium tube with screw cap Includes expiry date **QTY 1 per kit**
- **Dishwashing liquid**, 675 ml bottle, pH: 6.40-7.60, Active matter: 8% anionic + 1% non-ionic, Sodium chloride: 2%, Packing: bottle with push pull cap, Includes expiry date **QTY 1 per kit**
- **Dishwashing sponge**, pack of 4 pcs, Composition: **2 layers (scrubber and sponge)** High level of liquid absorption, rinses and cleans easily **QTY 1 per kit**
- **Garbage bags** (roll) 30 Lt (QTY 1 per kit), **30 bags per roll.**
- **Anti-lice shampoo** 100 ml with active ingredients: Malathion 0.50 g, Permethrin 1.00 g, Piperonyl butoxide 4.00 g Per 100g of solution. **QTY 1 per kit**

## Latrine Slabs



### Purpose

Plastic latrine slabs for use in public pit or trench latrines during the first phase of an emergency. They are ideal for family and communal mobile latrine

### Specifications

- One pallet is **35 pieces**.
- **Material:** linear low density polyethylene (LLDPE - UV protected) squatting slabs
- **Dimensions:** 1.2 m long x 0.8 m wide x 35 mm thick
- **Five M6 x 15mm brass moulded inserts** on the underside of the slab - for bolting on a pan and trap.

## Latrine Unit Superstructure



### Purpose

Easy to assemble kit to provide a durable latrine superstructure in first phase emergencies. Used for communal latrines, health centres, feeding centres, and schools etc. This unit features an easy to clean material, for low maintenance, and is easy to build by unskilled labour with minimal instruction. Each kit includes a set of tools for assembly of the units.

### Specifications

- **Dimensions:** Height 210 cm, Depth 120 cm, Width 80 cm
- **Unit weight 30 kg**
- 4mm **corrugated plastic**, UV stabilised
- **Pressure treated timber frame** (protected against rot and insects)
- **Slanted roof** for rain run off
- **Ventilation gap**
- Internal and external locking capability
- All fixings included
- The kit is optimised for airfreight by packing 14 units to a pallet. Where sea freight is preferred the superstructures will be packed 22 to a pallet.

## Multi Purpose Soap



### I Purpose

Liquid handgel, 500ML bottles, to promote personal, day-to-day hygiene and disinfection.

### I Specifications

- 500 ML. Ammonium lauryl sulfate, cocamidopropyl betaine, tea lauryl sulfate, aloe vera gel, glycerine extract, works well with salty water the percentage of salt is 40 Gram per one liter of water, the gel will be tested for the efficiency and reaction with salty water. the cap should be pump. The bottle should be labeled with instructions and clearly mentions that it is for salty water water usage

## OXFAM Handing Washing Kit



### I Purpose

The Oxfam Handwashing Stand is a low cost, easy-to-assemble, user friendly hand washing facility that can be installed in a first phase response to support sanitation and public health promotion activities.

Kit



### I Specifications

- **Features:** Self-closing taps are smooth to use, and provide the low water-saving flow required, Large mirrors are a draw, bringing people to the stand and encouraging them to wash for longer, Draining through a waste water tube, Wide spaced legs - to allow a soak-away to be dug for drainage, The kit is supplied as a compact box of six units which can be added to a stack of latrine slabs (as the dimensions are the same) or provided as a stack of four boxes on a pallet for standard air freight
- **Components included:**
  - **6 Handwashing stand reservoir** with soapy water container, (Plastic components (HDPE), UV stabilised) mirrors, lid, drain plugs, and valves fitted. Bag containing bolts (x6), hex key, drainpipe and cable ties, padlock.
  - **6 Handwashing stand basin** with drain outlet fitted
  - **18 Handwashing stand steel legs**, galvanised and powder coated (1160 mm long, 20 mm diameter, 1.2 mm gauge) - drilled and threaded for M6 bolts
  - **2 Instruction sheet**, A4 laminated
  - **1 Flat blade screwdriver** - for hose clamp
  - **1 Torx screwdriver** - for taps and drain screws

## Tapstand Kit



### I Purpose

The tapstand is fundamental to the distribution of safe water both in a semi-permanent setting like a camp and in a temporary setting such as a water trucking operation. A tapstand will enable a number of users to collect water at the same time and the self closing taps help to prevent water waste and standing water in the collection area.

Kit



### I Specifications

Kit of steel parts to assemble a distribution tapstand, supplied with a selection of fittings to connect it to a water supply. Components are included to connect to 32mm and 50mm PE pipe using compression couplings, or to 2" flexible or layflat hose using threaded or Guillemin couplings.

#### Components:

- 1 **Hollow section frame**, 40mm x 40mm section, fitted with: Inlet in centre of one side to connect 1 1/2" BSP(M) pipe, (x4) 1" BSP (F) sockets angled to receive the leg pieces, (x6) 3/4" threaded outlets
- 6 **Each Nipple**, Barrel, 3/4" BSP(M) x 300
- 4 **Each Frame legs**, 1" Ø x 1m long, GS - one end threaded to fit frame and other with foot plate
- 1 Each Nipple, Barrel, 1 1/2" BSP(M) x 600mm, GS - for inlet
- 4 Each Coach bolt and nut, M10 x 100mm long with nut
- 4 Each Coach screw, 3/4" x 3" long - for mounting on timber frame
- 2 Roll(s) PTFE tape
- 6 Each Valve (Tap), Evenflow type, 3/4" BSP(F), Aluminium
- 2 Each End cap, 3/4" BSP(F), GI
- 11 Each Adapter, 32mm Compression x

mm, GS - for taps

• 4 **Each Tee**, Reduced branch, 2"- 1 1/2" BSP(F), GI

• 1 **Each End Plug**, 2" BSP(M), GI

• 1 Each Bush, Reducing, 2" x 1" BSP(M-F), GI

• 1 **Each Adapter**, 50mm Compression x 2" BSP(M), PE

• 1 **Each Guillemin** half coupling x 2" BSP(M), without locking ring, Aluminium

• 1" BSP(M), PE

• 1" BSP(M), PE