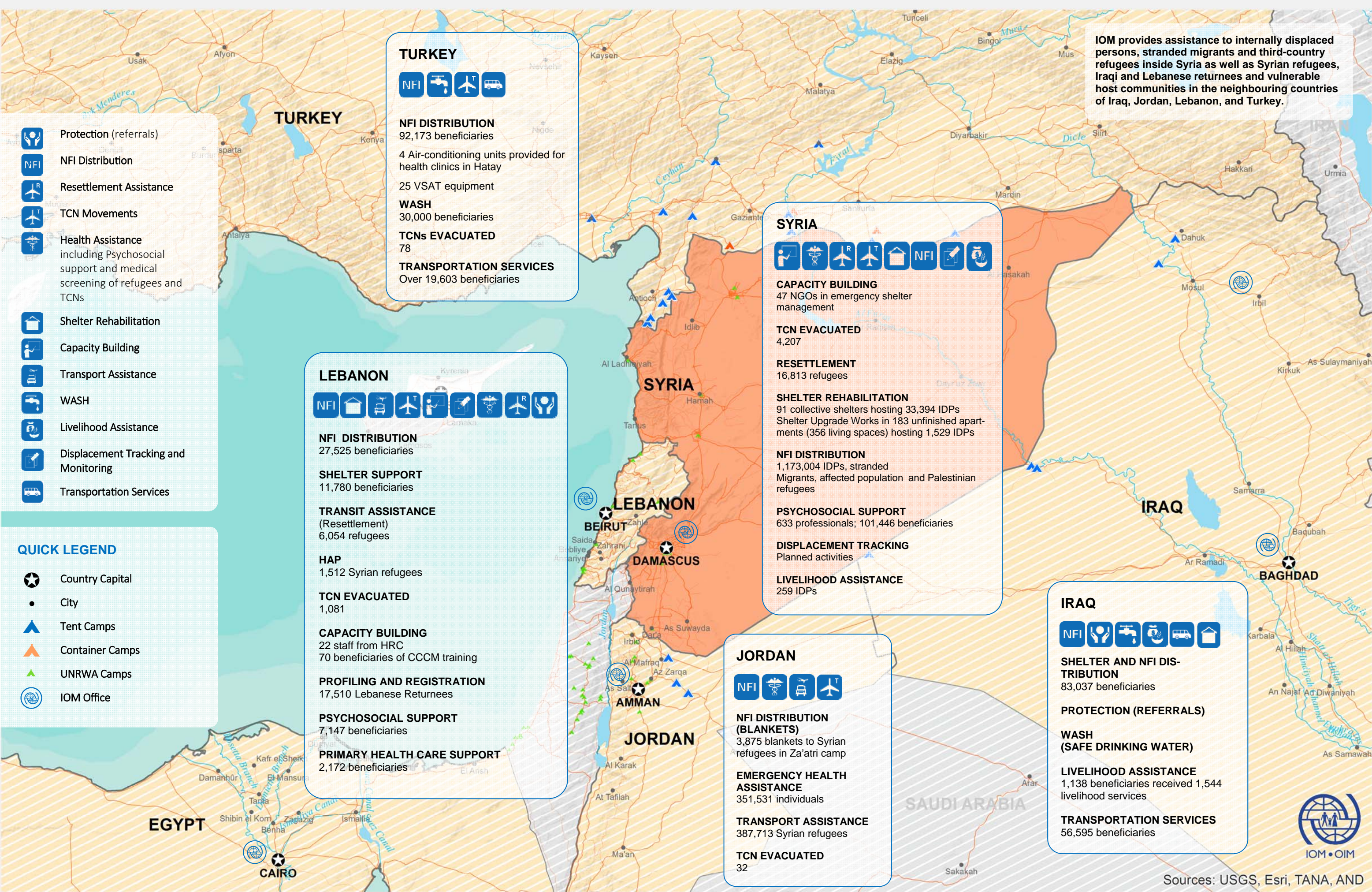


IOM REGIONAL RESPONSE TO THE SYRIAN CRISIS



IOM provides assistance to internally displaced persons, stranded migrants and third-country refugees inside Syria as well as Syrian refugees, Iraqi and Lebanese returnees and vulnerable host communities in the neighbouring countries of Iraq, Jordan, Lebanon, and Turkey.

TURKEY

NFI

NFI DISTRIBUTION
92,173 beneficiaries

4 Air-conditioning units provided for health clinics in Hatay

25 VSAT equipment

WASH
30,000 beneficiaries

TCNs EVACUATED
78

TRANSPORTATION SERVICES
Over 19,603 beneficiaries

SYRIA

Capacity Building

47 NGOs in emergency shelter management

TCN EVACUATED
4,207

RESETTLEMENT
16,813 refugees

SHELTER REHABILITATION
91 collective shelters hosting 33,394 IDPs
Shelter Upgrade Works in 183 unfinished apartments (356 living spaces) hosting 1,529 IDPs

NFI DISTRIBUTION
1,173,004 IDPs, stranded Migrants, affected population and Palestinian refugees

PSYCHOSOCIAL SUPPORT
633 professionals; 101,446 beneficiaries

DISPLACEMENT TRACKING
Planned activities

LIVELIHOOD ASSISTANCE
259 IDPs

LEBANON

NFI

NFI DISTRIBUTION
27,525 beneficiaries

SHELTER SUPPORT
11,780 beneficiaries

TRANSIT ASSISTANCE (Resettlement)
6,054 refugees

HAP
1,512 Syrian refugees

TCN EVACUATED
1,081

CAPACITY BUILDING
22 staff from HRC
70 beneficiaries of CCCM training

PROFILING AND REGISTRATION
17,510 Lebanese Returnees

PSYCHOSOCIAL SUPPORT
7,147 beneficiaries

PRIMARY HEALTH CARE SUPPORT
2,172 beneficiaries

JORDAN

NFI

NFI DISTRIBUTION (BLANKETS)
3,875 blankets to Syrian refugees in Za'atri camp

EMERGENCY HEALTH ASSISTANCE
351,531 individuals

TRANSPORT ASSISTANCE
387,713 Syrian refugees

TCN EVACUATED
32

IRAQ

NFI

SHELTER AND NFI DISTRIBUTION
83,037 beneficiaries

PROTECTION (REFERRALS)

WASH (SAFE DRINKING WATER)

LIVELIHOOD ASSISTANCE
1,138 beneficiaries received 1,544 livelihood services

TRANSPORTATION SERVICES
56,595 beneficiaries

- Protection (referrals)
- NFI Distribution
- Resettlement Assistance
- TCN Movements
- Health Assistance including Psychosocial support and medical screening of refugees and TCNs
- Shelter Rehabilitation
- Capacity Building
- Transport Assistance
- WASH
- Livelihood Assistance
- Displacement Tracking and Monitoring
- Transportation Services

- ### QUICK LEGEND
- Country Capital
 - City
 - Tent Camps
 - Container Camps
 - UNRWA Camps
 - IOM Office



Data source: IOM, UNHCR, UNRWA, WFP • This map is for illustrative purpose only. Names and boundaries do not imply official endorsement or acceptance by IOM.



Sources: USGS, Esri, TANA, AND