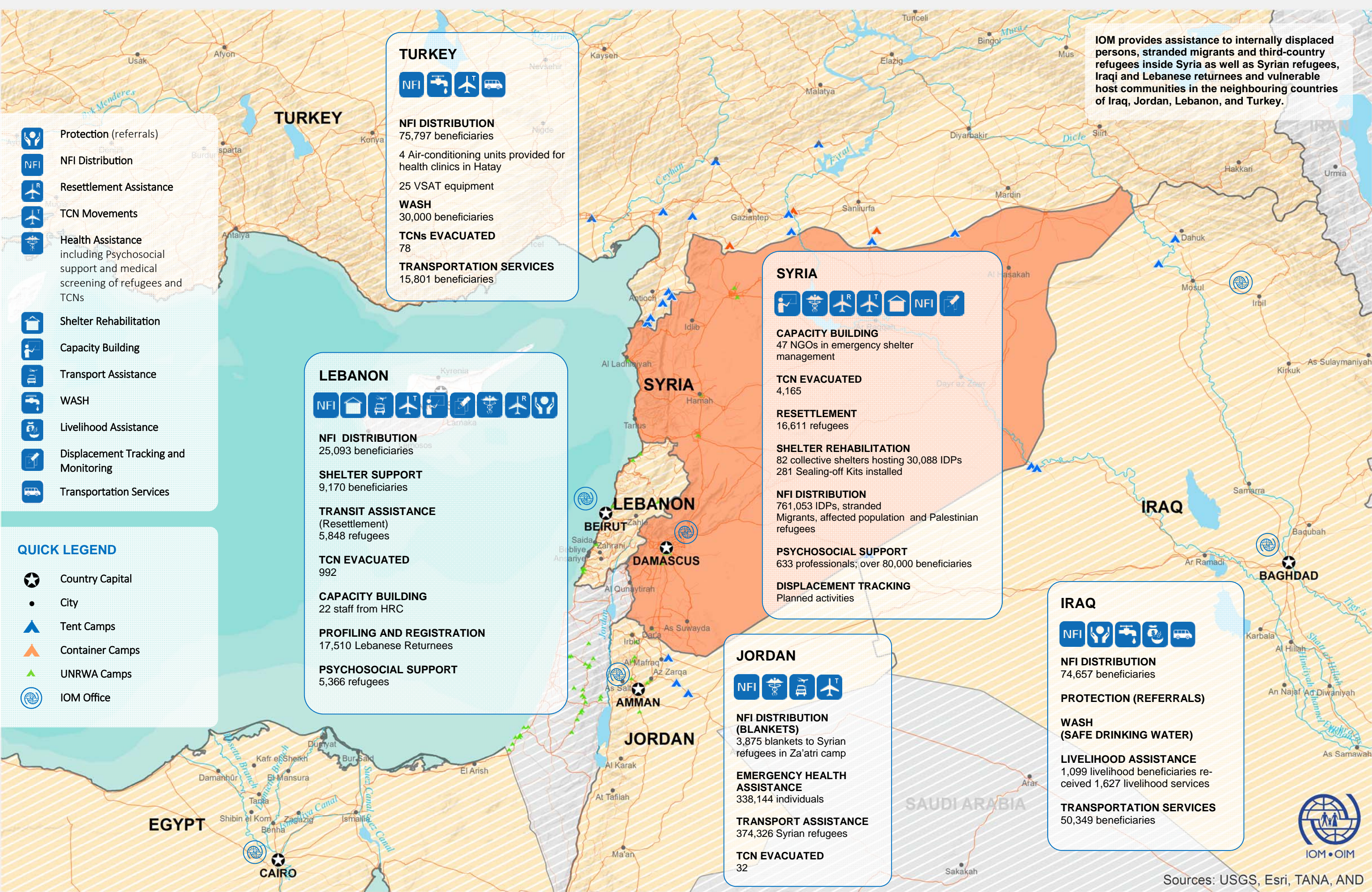



# IOM REGIONAL RESPONSE TO THE SYRIAN CRISIS



IOM provides assistance to internally displaced persons, stranded migrants and third-country refugees inside Syria as well as Syrian refugees, Iraqi and Lebanese returnees and vulnerable host communities in the neighbouring countries of Iraq, Jordan, Lebanon, and Turkey.

### TURKEY

**NFI** 

**NFI DISTRIBUTION**  
75,797 beneficiaries

4 Air-conditioning units provided for health clinics in Hatay

25 VSAT equipment

**WASH**  
30,000 beneficiaries

**TCNs EVACUATED**  
78

**TRANSPORTATION SERVICES**  
15,801 beneficiaries

### SYRIA

**CAPACITY BUILDING**  
47 NGOs in emergency shelter management

**TCN EVACUATED**  
4,165

**RESETTLEMENT**  
16,611 refugees


**SHELTER REHABILITATION**  
82 collective shelters hosting 30,088 IDPs  
281 Sealing-off Kits installed

**NFI DISTRIBUTION**  
761,053 IDPs, stranded Migrants, affected population and Palestinian refugees

**PSYCHOSOCIAL SUPPORT**  
633 professionals; over 80,000 beneficiaries

**DISPLACEMENT TRACKING**  
Planned activities

### LEBANON

**NFI** 

**NFI DISTRIBUTION**  
25,093 beneficiaries

**SHELTER SUPPORT**  
9,170 beneficiaries

**TRANSIT ASSISTANCE (Resettlement)**  
5,848 refugees


**TCN EVACUATED**  
992

**CAPACITY BUILDING**  
22 staff from HRC

**PROFILING AND REGISTRATION**  
17,510 Lebanese Returnees

**PSYCHOSOCIAL SUPPORT**  
5,366 refugees

### JORDAN

**NFI** 


**NFI DISTRIBUTION (BLANKETS)**  
3,875 blankets to Syrian refugees in Za'atri camp

**EMERGENCY HEALTH ASSISTANCE**  
338,144 individuals

**TRANSPORT ASSISTANCE**  
374,326 Syrian refugees

**TCN EVACUATED**  
32

### IRAQ

**NFI** 

**NFI DISTRIBUTION**  
74,657 beneficiaries

**PROTECTION (REFERRALS)**

**WASH (SAFE DRINKING WATER)**

**LIVELIHOOD ASSISTANCE**  
1,099 livelihood beneficiaries received 1,627 livelihood services

**TRANSPORTATION SERVICES**  
50,349 beneficiaries

-  Protection (referrals)
-  NFI Distribution
-  Resettlement Assistance
-  TCN Movements
-  Health Assistance including Psychosocial support and medical screening of refugees and TCNs
-  Shelter Rehabilitation
-  Capacity Building
-  Transport Assistance
-  WASH
-  Livelihood Assistance
-  Displacement Tracking and Monitoring
-  Transportation Services

- ### QUICK LEGEND
-  Country Capital
  -  City
  -  Tent Camps
  -  Container Camps
  -  UNRWA Camps
  -  IOM Office



Data source: IOM, UNHCR, UNRWA, WFP • This map is for illustrative purpose only. Names and boundaries do not imply official endorsement or acceptance by IOM.



Sources: USGS, Esri, TANA, AND