

Ukraine S/NFI Cluster Meeting

Summary Notes of S/NFI Meeting – Wednesday, 5th October, 2022

Venue: Online

AGENDA

1. Introduction
2. CCCM versus SNFI activities in CS's
3. Progress of this week – Operational presence map
4. Winterization recommendations
5. SNFI Cluster progress dashboard
6. Sub-national level cluster coordination highlights
 - East and newly accessible areas
 - Central region general update
 - Western region general update
7. AoB
 - UHF update
 - Asbestos WG

1. Introduction

Shelter Cluster Coordinator (SC) informed about the review of the envelope 1 for the standard allocation under UHF call took place last week. SC quoted for 10 million USD for 11 projects (Shelter and intersectoral projects).

The next UHF review process for the envelope 1 on localization for 20 million USD will start next week, volunteers from the Cluster partners are asked to support in reviewing the projects have been invited.

On Friday 7th of October, Shelter Cluster will participate in HPC Cycle Workshop to frame the HNO and upcoming response plans. Updates will be provided during the next week.

Partners are also reminded about the ongoing participation tools:

- Shelter Cluster website - [Ukraine | Shelter Cluster](#)
- Mailing List - [Ukraine SNFI Cluster \(list-manage.com\)](#)
- TWiG Member - [TWiGs member lists - Google Docs](#)

Considering the development process of the basic guidelines, TWiG Meetings are taking place ad-hock to understand that gaps in the specific fields of intervention are covered. Considering the meetings are not as regular as they were before, participants of the TWiG are encouraged to ask SC to organize TWiG meetings in case there is a necessity to discuss specific topics.

Partners are also reminded that in order to be part of Cluster's TWiGs (technical working groups) they need to go to the Cluster Google Drive page: docs.google.com/document/d/1lQr0gYW7GBcssd_jya_ZxV63BGxzPYN7VxhqvMPqil/edit# and add their names to the mailing lists of the TWiG they want to join.

- Online Google Database:

1. Refurbishment of CSs (Restricted Access) -
[Refurb. of CSs - Shared Database S/NFI Cluster, only for internal coordination .xlsx - Google Sheets](#)
[Kharkiv City CC HH NFIs - Google Sheets](#)
2. Winterization Response Capacity
[20220616 Winterization Response Capacity NEED FOR INPUTS.xlsx - Google Sheets](#)
3. Response dashboard
[Shelter NFI Cluster Response Dashboard - Power BI](#)

To report 5W on CCCM activities, the email with relevant data should be sent to ukrkicccm@unhcr.org

[SNFI Cluster National Meeting Full Presentation](#)

2. CCCM versus SNFI activities in CS's

Reporting assistance in Collective Sites

It is mentioned that the figures that are present in 5W do not reflect the actual situation with assistance under Shelter and NFI activities. The reason for such a situation can be caused because of the lack of clarity in the reporting. Problematic areas covering the issues related to understanding when activities should be reported to CCCM and Shelter/NFI Clusters on the one hand, and when activities can be clarified as “improvement” or as “creation” on the other hand.

CCCM vs Shelter NFI

The main principle is that actuals have to be reported either to CCCM or Shelter/NFI Cluster based on their characteristics of the items (for communal or individual/family use and non-movable or movable etc.).

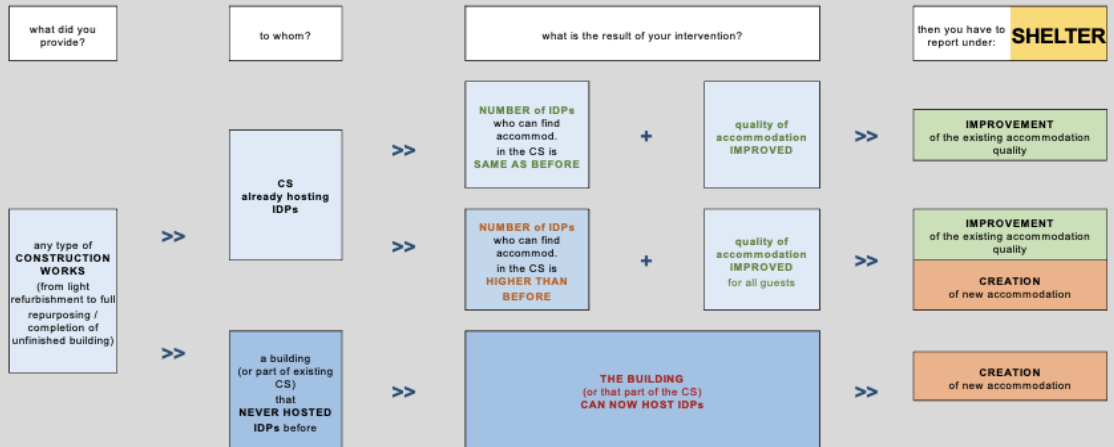
For example, for the communal use the installation of fridges, washing machines, boilers will be reported to the Shelter/NFI Cluster 5W when they represent a first installation for that CS), and in case these items don't represent a first installation, but replace an old or non-functioning similar item already present in the CS, they must be reported to CCCM Cluster.

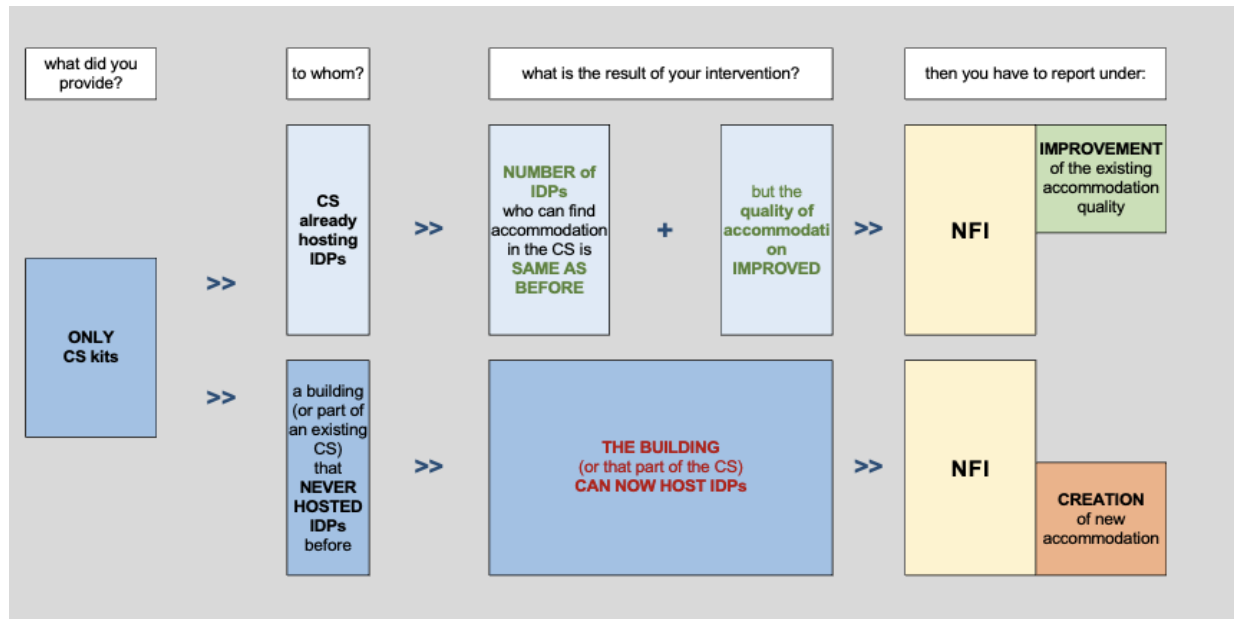
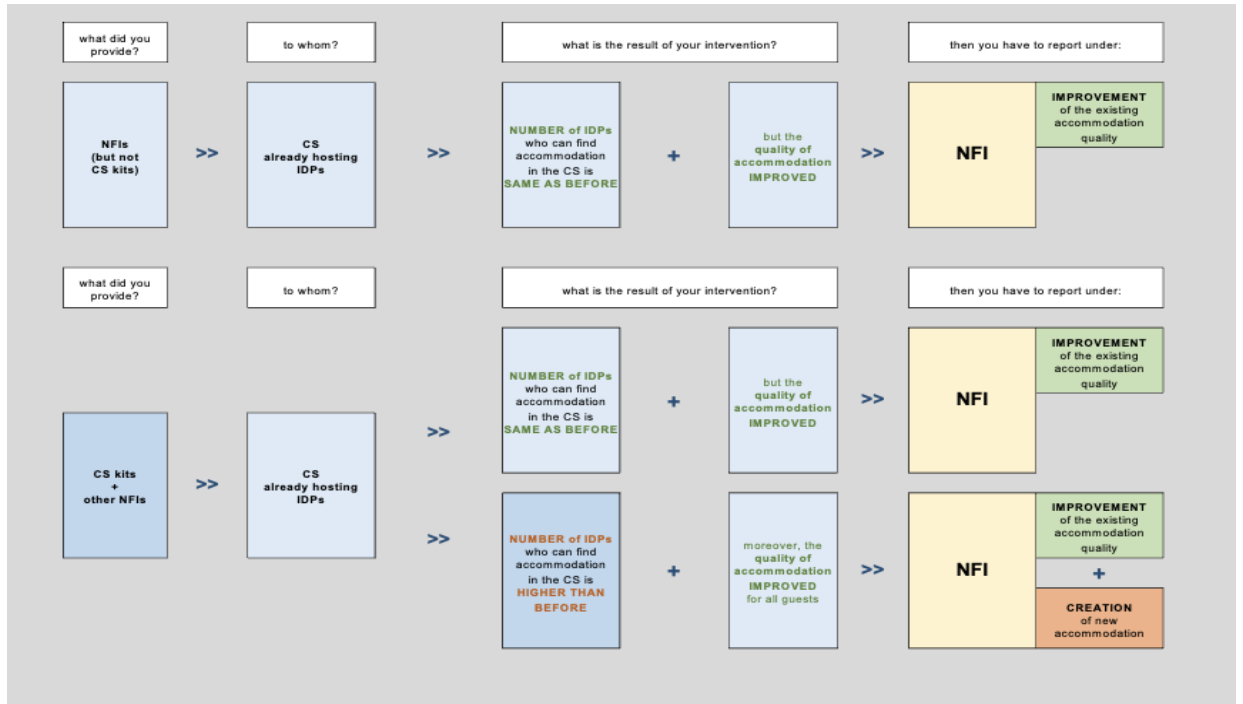
Improvement vs Creation

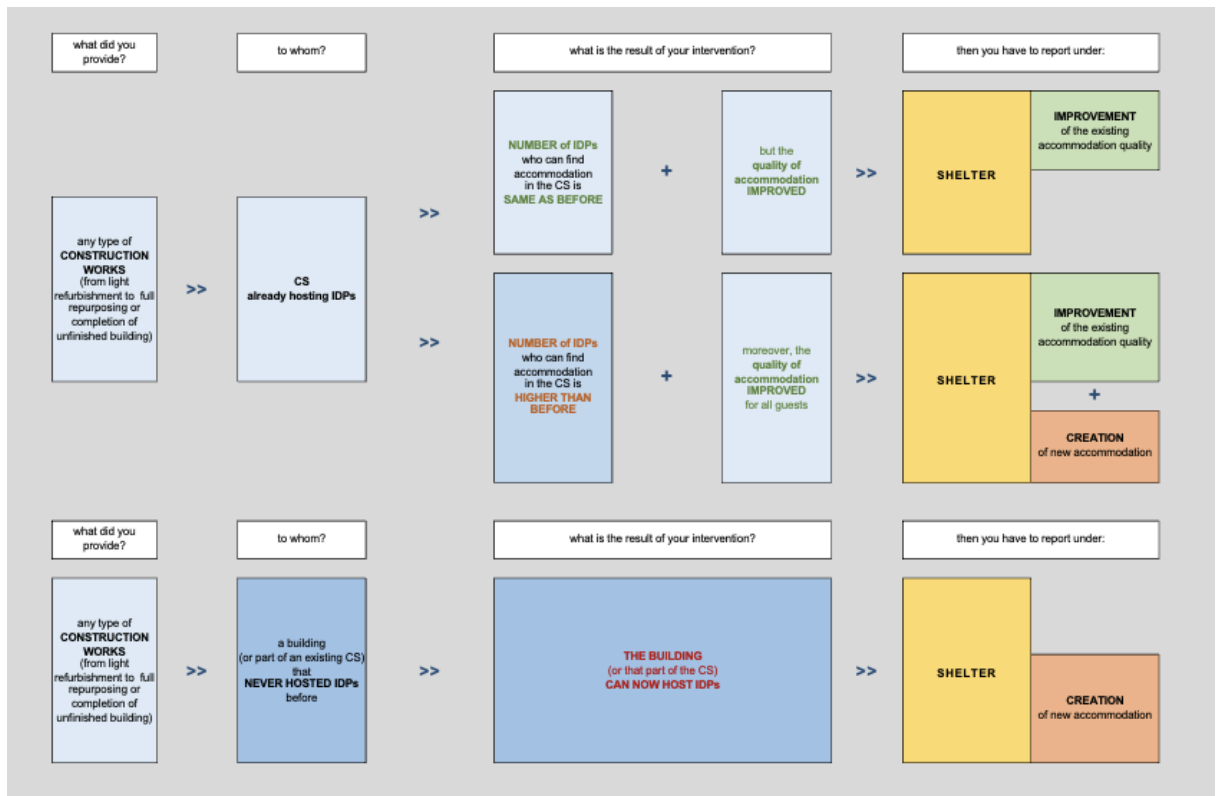
Participants were informed that during the reporting to 5W, considering the relevance of the activity results to “improvement” or “creation”, actuals must be reported to 5W separately e.g. if 100 people are living a CC and this CC is supported with 200 mattresses, it means that there is an improvement of 100 bed places and a creation of 100 beds in empty rooms, as a result the actuals should be reported separately under relevant indicators of CCCM or Shelter Cluster.

It was highlighted that wording in this document directly reflect the Cluster indicators.

2. Reporting assistance in Collective Sites







In case of any additional questions, additional Q&A session will be organised.

Under Shelter Cluster approach, a bomb shelter can not be categorised as a collective centre. The Shelter Cluster is cautious about the creation of a CC as it requires the coordination with local authorities ensuring the safety and security of people. Considering the reporting on the provision of assistance to a bomb shelter, we have the activity “provision of bomb shelter kit”. In case there is a specific request for materials or activities from the local authorities, the partner organisation can make its own decision on responding the need.

Supporting maintaining of a bomb shelter is CCCM Cluster activity, as CCCM is covering collective sites which includes transition and collective centres. All other intervention should be reported under other Clusters.

More accurate information if the bomb shelter renovation has to be listed under CCCM or under Shelter activity has to be additionally investigated.

3. Winterization recommendations

Partners are informed that Winterization recommendation is uploaded to the Shelter Cluster web site – [link](#).

There are different cash packages (cash for NFI, cash for rent). How we go about creating the coordination in cash aspect.

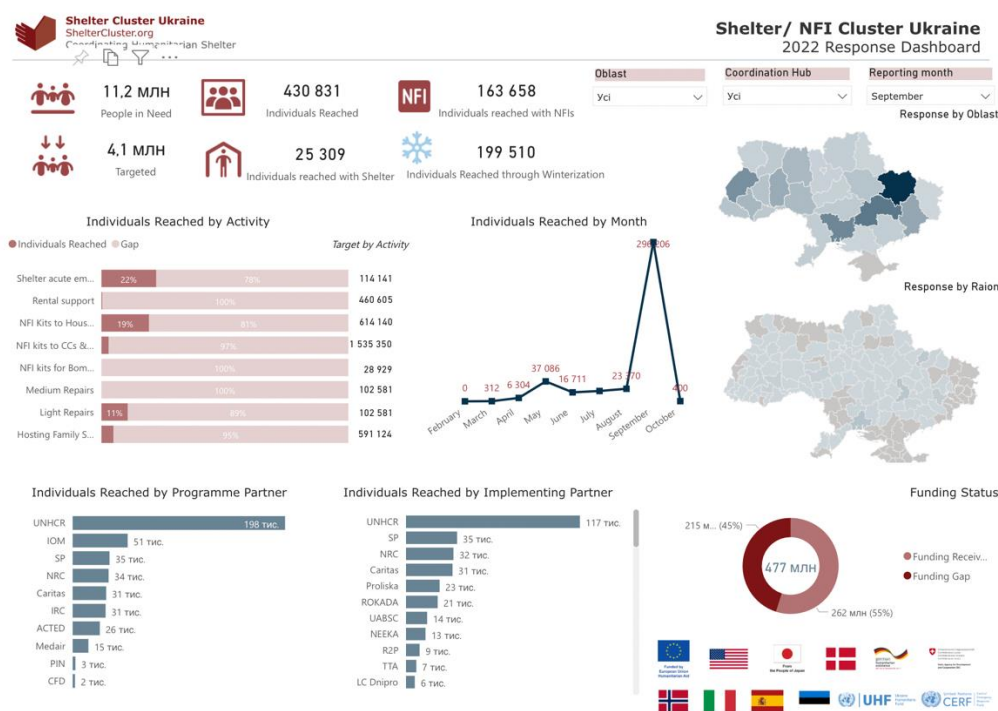
While discussing the winterization recommendations, there are numbers of different cash packages. It was highlighted that cash is a modality for almost all activities except for cash for rent and cash for utilities. It means that the amount of cash modalities as response have to be counted due to the recommendations for the activity and based on that some sort of coordination in terms of amounts, approaches and areas is expected.

Responding the question from SC participant related to simplifying the process of receiving the data on subsidies, it was mentioned that of course data verification from the local authorities needs to be improved. At the same time, receiving information at the ministry level requires the presence of MoU and faces with some restriction on sharing personal data. As a result, we can get information related to the addresses as it is non-personal data. Based on the experience, if a partner is working in the fields, local authorities tend to support organisation with the information on the subsidies that are received.

Winterization Planning Tool of SC will be developed. It is expected that the information on activities and indicators relevant to winterization will be set up.

4. SNFI Cluster progress dashboard

The updated information from the interactive dashboard that covers individuals, priority activities by location and by partner was presented. Link is available on the Shelter Cluster web site.



To get an overview for further intervention, partners are advised to contact Shelter Cluster as the data holder of the needs from the local authorities on different levels. As soon as HPC Cycle and HNO is finalized, the information on the most critical aspects (low-covered areas, lack of partners) will be presented to partners.

Partners are encouraged to visit the page and contact Shelter Cluster if some information is not reflected.

5. Sub-national level cluster coordination highlights

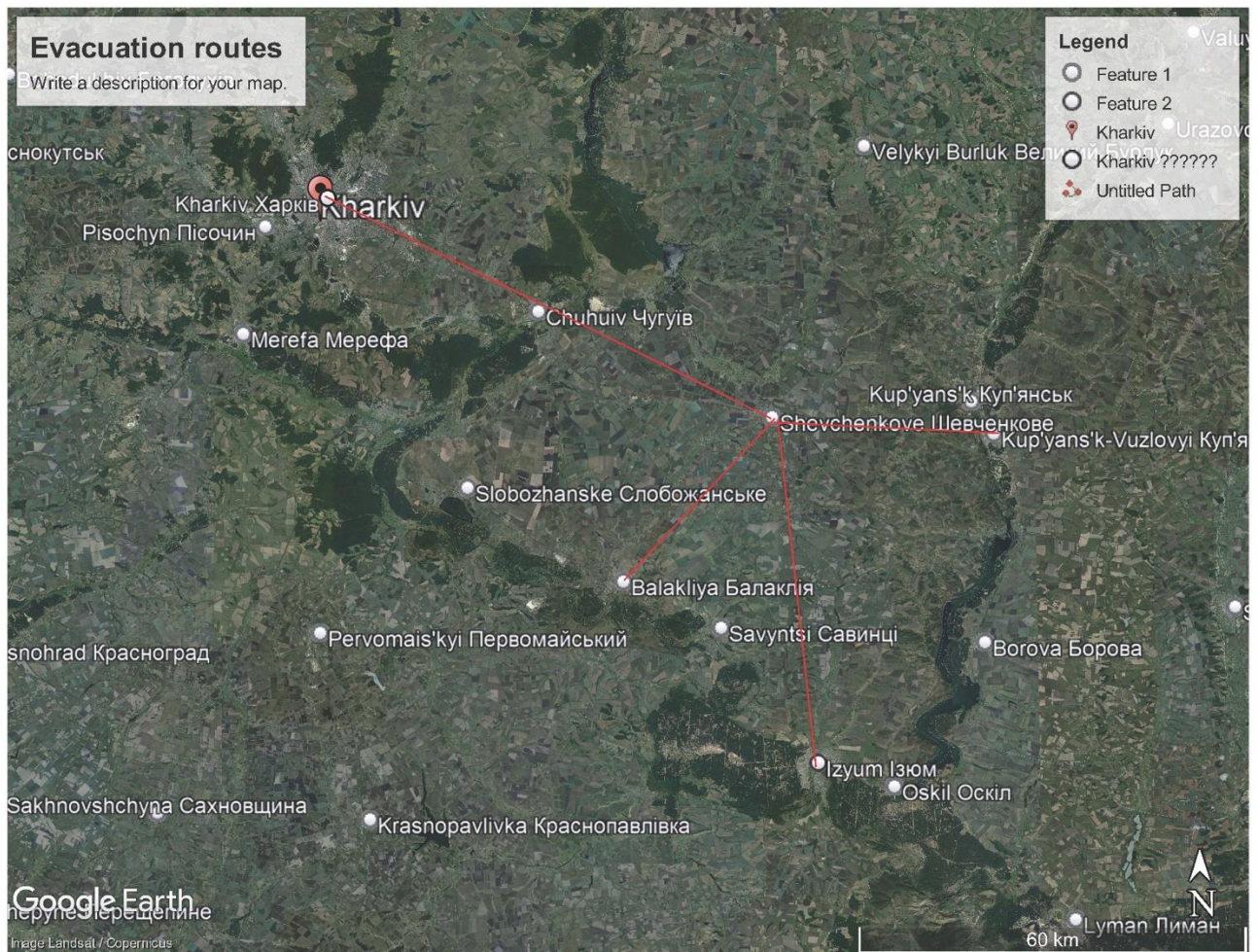
- East newly accessible areas (Kharkiv)

Newly accessible areas – any concluded assessment

Informal mapping on evacuations routes is developed based on the inputs from the volunteer groups (200-250 individual per day). It is mentioned that Shevchenkove serves as a registration and filtration point and then people are moving to the collective sites in Kharkiv.

To assess the situation, DTM is trying to track the population movement and other Clusters are involved to identify needs. The list of needs from the newly accessible areas can be shared.

Oblast has set up new website, partners can request for a permanent entry after completing the form and get access to the area on the next day.



OCHA will share the map of intervention for the next 3 weeks, and when the hubs will be identified, the Cluster can support partners more on the areas that are not covered.

In terms of emergency response, WASH Cluster is mobilizing their efforts in understanding the gaps in different locations in terms of heating, water supply etc. The meeting with the authorities of Donetsk oblast took place to understand the needs. Two main factors were discussed: possible increase of movement rates caused by the lack of water; administration is assessing and developing plans on the needs of repairing the damaged houses, needs for heating, fuel etc.

- Central region general update

The data collection from the local administration took place:

Cherkaska Oblast: information on CSs, a list of needs in NFI will be shared till the end of the next week.

Khmelnyska Oblast: the lists of CSs, the list of needs in NFI and repairs for CSs have been received.

Chernivetska Oblasts: the list of CSs within the oblast, the list of needs in NFI and repairs received.

Information of Odeska Oblast and the SNFI needs, gaps and challenges will be provided next week.

Partners are encouraged to contact the Sub-national coordinator in case some information on these Oblasts is needed.

- Western region general update

SC went through CSs database and updated the information on the presence of partners in CSs in terms of Shelter and NFI support. This exercise will be expended to other regions.

6. AOB

- Ministry of Regional Development created a “Shtab” on the oblast level and share the list of items with materials, work etc. that is needed at the oblast level. Partners are encouraged to support the local authorities in case they have resources and capacity.
- Partners are invited to nominate 2 representative who will participate in the evaluation the projects under UHF Envelope 2.

7. Participants List

No	Name	Organization	Attendee Email
1.	Anastasiia Burau	R2P	a.burau@r2p.org.ua
2.	Anne Dinkelman	ZOA	a.dinkelman@zoa.ngo
3.	Alberto VIS		a.livoni@volint.it
4.	Andrew Harrelson	Samaritan	aharrelson@samaritan.org
5.	Alex Davies	NRC	alexander.davies@nrc.no
6.	Mais Al Suradi	UNHCR	alsuradi@unhcr.org
7.	Alexander Mihaylov	Global Communities	amihaylov@globalcommunities.org
8.	Andrii Prykhodko(?)	HIA	andrij.prykhodko@hia.hu
9.	Anna Pallonka	OCHA	anna.palonka@un.org
10.	Andrii Pirian	GPTech	apirian@greenpwr.com
11.	Archil Zhorzholiani	ACTED	archil.zhorzholiani@acted.org
12.	Artem Gladkykh	EPFL	artem.gladkykh@epfl.ch
13.	Artem Kulichenko	NRC	artem.kulichenko@nrc.no
14.	Alanna Smith		asmith@medicalteams.org
15.	Borys Prykhodko	arche-noVa	b.prykhodko@arche-nova.org
16.	Barbara Villela	DRC	barbara.villela@drc.ngo
17.	Bassam Kalka	CRS	bassam.kalka@crs.org
18.	Andreea Bodea	UNHCR	bodea@unhcr.org
19.	Camilla Cimatti	Caritas Switzerland	ccimatti@caritas.ch
20.	Christina Maltseva		ch.maltseva@gmail.com
21.	Alen Chalak	UNHCR	chalak@unhcr.org

22.	Anastasiia Chornii	UNHCR	chornii@unhcr.org
23.	David Brooks	Global Empowerment Mission	dbrooks@email.com
24.	Dejan Deletic	ADRA Ukraine	dejan.deletic@adra.ua
25.	Karine Muradian (?)		developcenter.project@gmail.com
26.	Надежда		developcenter.project@gmail.com
27.	dima		dimdim1@me.com
28.	Kostyantyn Dmytrenko	UNHCR	dmitrenk@unhcr.org
29.	Dmytro Tumarkin	CSO Family Garden	dmitry.tumarkin@gmail.com
30.	Elise Filo	IDMC	elise.filo@idmc.ch
31.	Eric - Field Ready	ED- Field Ready	eric@fieldready.org
32.	Esteban Kang	Medair	esteban.kang@medair.org
33.	Eric Weaver	Samaritan	eweaver@samaritan.org
34.	Fabienne Hugi	Swiss Red Cross	fabienne.hugi@redcross.ch
35.	oleksandra ferlikovska	UNHCR	ferlikov@unhcr.org
36.	Guillaume Gazel	ACTED	guillaume.gazel@acted.org
37.	Olga Ieroshenko		housingidp@gmail.com
38.	Halyna Rybalko	East Europe Foundation	hrybalko@eef.org.ua
39.	Iana Chubenko	GIZ	iana.chubenko@giz.de
40.	Iryna Ivakha (?)	Samaritan	iivakha@samaritan.org
41.	Ihor Mitiaiev (?)	IOM	imitiaiev@iom.int
42.	Благодійний фонд «Відбудуємо разом»		info@re-home.in.ua
43.	Iryna Prodan	WFP	iryna.prodan@wfp.org
44.	Jacqueline Talevska	Dorcas	j.talevska@dorcas.nl
45.	Jack Sell	GER3	jack.sell@ger3.org
46.	Javier Cidón	Habitat for Humanity	jcidon@habitat.org
47.	Justin Secrease	Global Communities	jsecrease@globalcommunities.org
48.	Justin Tyvoll	USAID	jtyvoll@usaid.gov
49.	Kateryna Antonova	Peace Winds Japan	katerynaa.pwj@gmail.com
50.	Katie Smedema	REACH	katherine.smedema@reach-initiative.org
51.	Konrad Clos	IOM	kclos@iom.int
52.	khrystyna Shatska	Proliska	kh.shatska.proliska@gmail.com
53.	Hago	UNHCR	kjetland@unhcr.org
54.	Koba Tsiramua	NRC	koba.tsiramua@nrc.no
55.	k oliinyk	SSS	koliinyk@radnyk.org
56.	Kristina Oliinyk	SSS	koliinyk@radnyk.org
57.	Kristjana Adalgeirsdottir	Swiss Red Cross	kristjana.adalgeirsdottir@redcross.ch
58.	Iliya Kusa	UNHCR	kusa@unhcr.org
59.	Evgeni Kuzmin	UNHCR	kuzmin@unhcr.org
60.	Christian Langehenke	UNHCR	langehen@unhcr.org
61.	Lesia Popeliukh	UNDP	lesia.popeliukh@undp.org
62.	Liz Palmer (?)	Save the Children	liz.palmer@savethechildren.org
63.	LeGrand Malany	USAID/BHA	lmalany@juno.com
64.	Lukasz Jakielski (?)	PIN	lukasz.jakielski@pinf.cz
65.	Andrii Lupak		lupak1998@gmail.com
66.	Margot Durin (?)	CRS	margot.durin@crs.org
67.	Marianne Pecnik	Austrian RC	marianne.pecnik@roteskreuz.at
68.	Marina Anki	Luxembourg Red Cross	marina.anki@croix-rouge.lu
69.	Marta Stermieri	WHH/JERU Consortium	marta.stermieri@welthungerhilfe.de
70.	Maryna Phrolova		maryna.phrolova@gmail.com
71.	Mazen Yachoui	Save the Children	mazen.yachoui@savethechildren.org
72.	Maria Carr	Caritas	mcarr@caritas.ch
73.	Tagui Melkumian	U.S. Embassy in Kyiv	melkumiantr@state.gov
74.	Volodymyr Melnyk	UNHCR	melnik@unhcr.org

75.	Mario Flores	Habitat for Humanity	mflores@habitat.org
76.	Mila Shevchenko	ACTED	mila.shevchenko@acted.org
77.	Misha	Global Empowerment Mission	misha@globalempowermentmission.org
78.	Megan Kirby	IOM	mkirby@iom.int
79.	MSF OCP SUPPLYCO		msff-ukraine-supplyco@paris.msf.org
80.	Nataliya Kramar	R2P	n.kramar@r2p.org.ua
81.	Nadia TITHI	IOM	ntithi@iom.int
82.	Oleksii Pyrikov	UNDP	oleksii.pyrikov@undp.org
83.	Oleksii Stepanov	Heks Eper Ukraine	oleksii.stepanov@heks-eper.org
84.	Oleksii Zaitsev		oleksii.zaitsev@hilfswerk-international.at
85.	Olesia Luchkovska	East Europe Foundation	oluchkovska@eef.org.ua
86.	Olha Moloko	East Europe Foundation	omoloko@eef.org.ua
87.	Onurcan Yilmaz	ASAM-TR	onurcan.yilmaz@sgdd-asam.org
88.	Palvinder Kaur.	United Sikhs	palvinder.kaur@unitedsikhs.org
89.	Andrea Parisi	UNHCR	parisi@unhcr.org
90.	Philippa Young		philyoung77@hotmail.com
91.	Hala Sabah Jamil	AAF	pm@the-aaf.org
92.	Paul de Carvalho-Pointillart	OCHA	pointillart@un.org
93.	Denys	Proliska (?)	proliskavin@gmail.com
94.	Ryan Ginter	ZOA	r.ginter@zoa.ngo
95.	Rachel Harvey	Shelterbox	rachelharvey@shelterbox.org
96.	RALPH KILIAN		ralph@coreresponse.org
97.	Roman Melnyk	IOM	rmelnyk@iom.net
98.	Roshan Joshi	Save the Children	roshan.joshi@savethechildren.org
99.	Sanjay Mukherjee	IFRC	sanjay.mukherjee@ifrc.org
100.	Sviatoslav Savchuk	UNHCR	savchuk@unhcr.org
101.	Andrii Lavrinenko	ACTED	severo.project-officer2@acted.org
102.	Sona Huberova	PIN	sona.huberova@peopleinneed.net
103.	Integra Slovakia	INTEGRA	stanislava.kotuckova@integra.sk
104.	Kalinichenko_Tetiana	Red Cross	t.kalinichenko@redcross.org.ua
105.	Mahellet Tamene	UNHCR	tamene@unhcr.org
106.	Tetiana Bohdanova	URRF/IREX	tbohdanova@irex.org
107.	Tetiana Tavlui	UNOPS	tetianat@unops.org
108.	travis gartner	Global Communities	tgartner@globalcommunities.org
109.	Tetiana Halishyn	IOM	thalishyn@iom.int
110.	Trina	Medical Team's International	thelderman@medicalteams.org
111.	Tetiana	Caritas	tnazarenko@caritas.ua
112.	Anna Tsvihun	GER3	tsvihunanna@gmail.com
113.	Omer Ukla	CARE Ukraine	ukla@care.de
114.	Shelia Slemp	USAID/BHA	ukrcrisisfield_pgo4@usaid.gov
115.	UNHCR Ukraine WebEx	UNHCR	ukrkiwbx@unhcr.org
116.	Vadym Moskalenko (?)		vadimmoskalenko777@gmail.com
117.	Valentyn Bebik	Caritas	vbebik@caritas.ua
118.	Victor Gladchenko	PIN	victor.hladchenko@peopleinneed.net
119.	Victoria Murtagh	NRC Odesa and Mykolaiv	victoria.murtagh@nrc.no
120.	Viktor Naumenko	Medair	viktor.naumenko@medair.org
121.	Viktoriia Fiohnostova	CF Your Support	viktoriia.fiohnostova@tvoya-opora.org.ua
122.	Tom Meunier -	TGH Field Co Vinnytsia	vinnytsia.ukraine@trianglegh.org
123.	Caritas U	Caritas	vkhomehko@caritas.ua
124.	Vlada Bidna	CF Believe in Yourself	vladislavbidna@gmail.com
125.	Volodymyr Khorbaladze	NRC	volodymyr.khorbaladze@nrc.no
126.	Vasyl Senchii	Corus	vsenchii@corusinternational.org
127.	DOMINGE Jean-Charles	Solidarite International	wash.coo@solidarites.org
128.	Yuriy Cherniy	R2P	y.cherniy@r2p.org.ua

129.	Yasmina Peker	SGDD-ASAM (?)	yasmina.peker@sgdd-asam.org
130.	Yuliia Boyko	NEW WAY	yboyko.newway@gmail.com
131.	Yuliia Gurieieva	BWB UA	yuliia.gurieieva@bwb.org.ua
132.	Tetiana Totska	CORE	

SNFI Cluster Coordination Team

SNFI National Cluster Coordinator claassen@unhcr.org

Focal point for sub-national coordination- Dnipro hub alsuradi@unhcr.org

Sub-national coordinator- Vinnitsia hub savchuk@unhcr.org

Information Management Team im.ukraine@sheltercluster.org

URL: [S/NFI Cluster Ukraine Website](#)



[Sign up for the S/NFI Cluster Mailing List](#)