

NWSW Regional Environmental Workshop

Main Presentation

Agenda



Presentation on ECHO Minimum Environmental Requirements



Environmental Mainstreaming – Assessing the Humanitarian Situation and the Natural Environment

Introduction of Nexus Environment Assessment Tool

Introduction of Case Studies

Working in Groups to fill out the NEAT+ Sensitivity Tool

Debrief on results



Environmental Planning- How to design a response that is environmentally conscious?

Introduction to the NEAT+ Activity Modules

Return to your groups and now plan your response

Fill out the NEAT+ activity modules for the type of response you are planning

Debrief on Results



Review of Environmental Risk Mitigation of Activities and the HRP Environmental Criteria Indicators



Shelter scorecard approaches and examples



Cameroon Shelter Cluster

ShelterCluster.org
Coordinating Humanitarian Shelter

ECHO- first donor to require Minimum Environmental Requirements



European Union
Humanitarian Aid

ECHO provided funds on environmental mainstreaming to the Global Shelter Cluster which has in turn encouraged country-level and subnational clusters to consider these

ECHO being a major humanitarian donor is likely to set the example and other donors may follow

NEAT+ Sensitivity Tool

Nexus Environmental
Assessment Tool

Environmental Screening

Can reinforce how we are currently analysing humanitarian needs and facilitate longer-term thinking beyond immediate humanitarian response

Made available in Kobo and excel: The kobo tool already has the NWSW locations added

Tool has photos to understand what question is being asked

Disclaimer: The NEAT+ is not intended to assess the environmental impacts of a whole disaster or crisis, only the area(s) being assessed. It is a first-step screening process that identifies key environmental issues for follow up. For full information on the NEAT+ process and how it links to environmental management, systems or procedures please refer to the [NEAT+ reference document](#) available on the [NEAT+ homepage](#).

Components of NEAT Sensitivity Tool

[C4] What is the building density in the area being assessed?
Consider how close the settlements are to each other.

Low Density



Medium Density



High Density



Area Profile and Conditions

Crisis Event

Infrastructure and Buildings

Natural Environment

Nearby areas of Significance

Basic Services

Socio-Economic Settings

Natural Resources

Climatic Events

Photos



Cameroon Shelter Cluster
ShelterCluster.org
Coordinating Humanitarian Shelter

NEAT+ Sensitivity Tool: Case Studies



Using the tool helps in understanding the tool



Field Case Studies from one village each in each Division of the Northwest

19 maps

1 summary of case study (SC HH data, OCHA MSNA, Community Development Plans, other sources)



7 breakout groups to fill in info (Submit to Kobo when completed with your group)

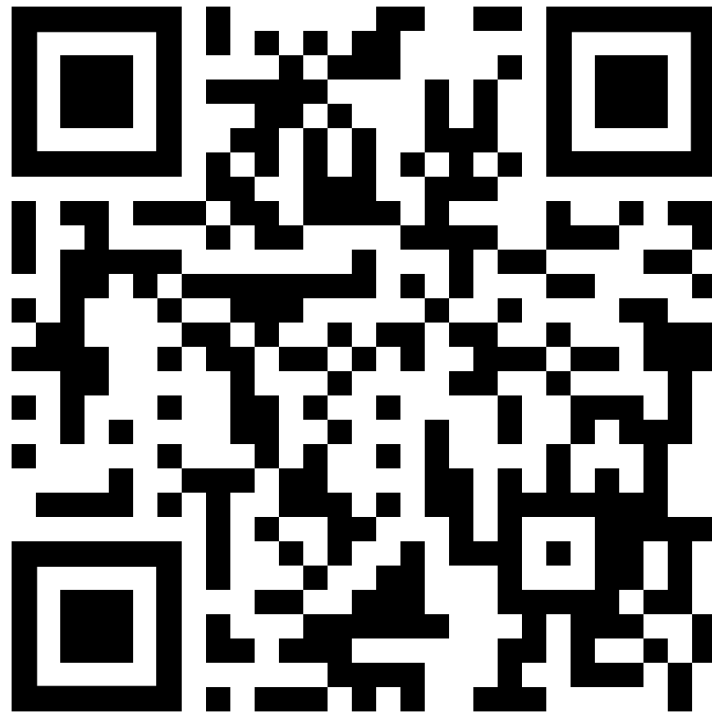


Encourage use of the tool next weeks in the field for your organizations



Access to the NEAT Sensitivity Tool

- <https://enketo.unhcr.org/x/fA5s8Jhy>



Results of NEAT+ Analysis

Issues of High Concern	Issues of Medium Concern	Issues of Lower Concern
There is a high concentration and/or number of people. The potential environmental impact is greater.	Rates of deforestation may exceed regeneration capabilities. Deforestation may be a risk.	The displaced population may be in a state of high uncertainty. There may be a lack of incentive to practice sustainable behavior.
There is a risk of air pollution from nearby activities.	Indoor air pollution, caused by poor ventilation and cooking/heating, may be an issue.	The environment has fragile ecosystems. Further assessment is required to determine if loss of biodiversity is accelerating.
There is low capacity to manage solid waste. Environmental sanitation and disease transmission may be an issue.	There is low capacity to manage sewerage and faecal sludge. Environmental sanitation and disease transmission may be an issue.	There are areas of high cultural significance. This can threaten social cohesion.
Management of waste, including that generated by the crisis, may be an issue. Crisis waste can pose public health risks, and impede relief or recovery activities.	This area may be at risk of soil erosion from water.	The community may have a high dependency on the natural environment. This can threaten livelihoods and social cohesion.
The area may have poor slope stability. Landslides or mudslides may be a risk.		The environment has a low regenerative capacity. The effects of land and soil degradation are more significant.

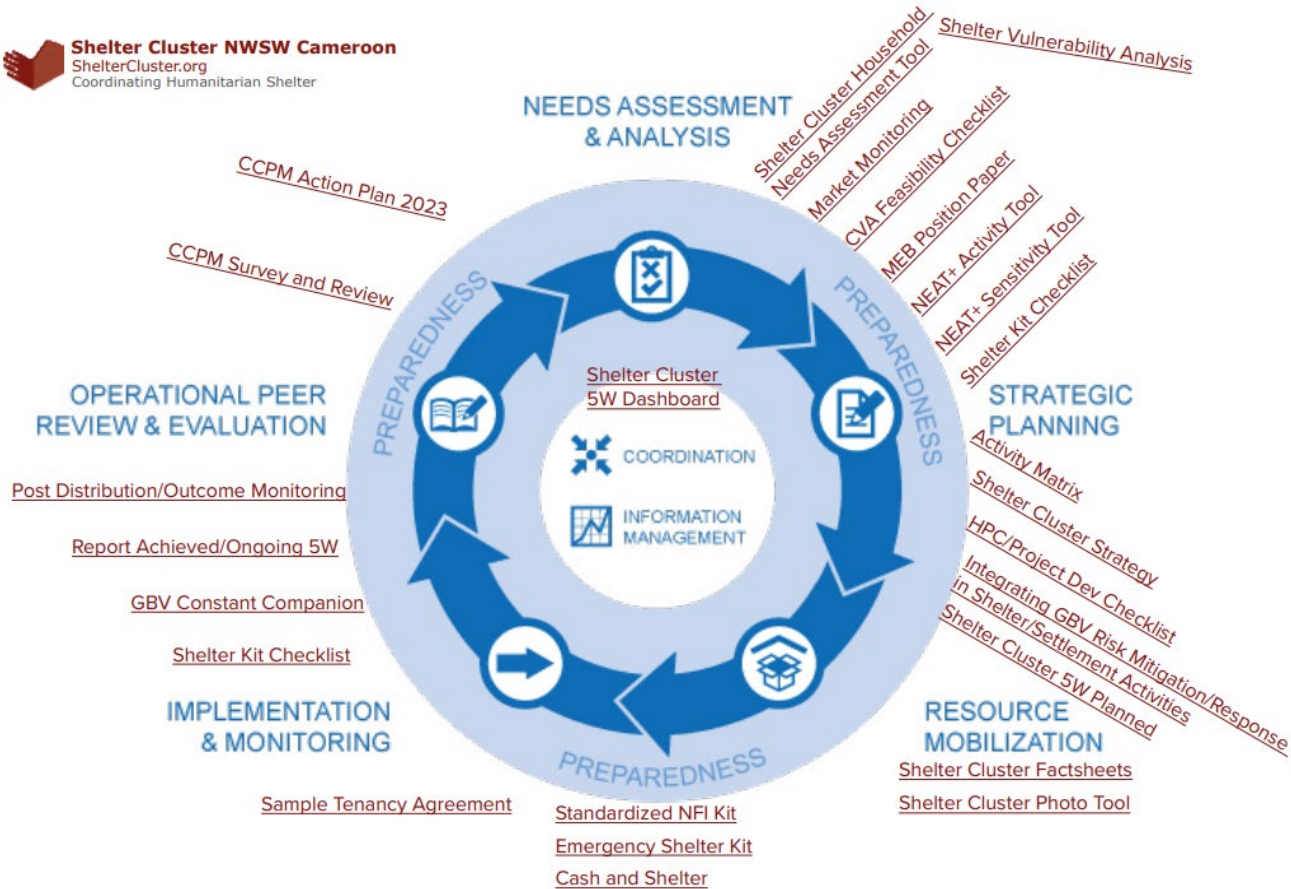


Next Step: Design Your Response

Shelter Cluster One Pager



Shelter Cluster NSW Cameroon
ShelterCluster.org
Coordinating Humanitarian Shelter



Cameroon Shelter Cluster
ShelterCluster.org
Coordinating Humanitarian Shelter

Reminder of Shelter/NFI Activities: Option 1: NFI and Energy (cooking fuel optional)









30-Aug-22





MINIMUM NFI KIT				
DESCRIPTION	Units / kit	Comments	Price per unit	
Family Size Sleeping Mattress 140X190X15cm foam mattress covered with synthetic cloth	1		32,200.00 XAF	32,200.00 XAF
Blanket, fleece, light thermal resistance, 150 x 200 cm.	2		10,700.00 XAF	21,400.00 XAF
Mosquito nets, long-lasting insecticidal nets, rectangular large, 160 x 180 x 150 cm	2		5,000.00 XAF	10,000.00 XAF
Stainless steel/aluminum cooking pot with handles and lid, 5 l.	1		7,250.00 XAF	7,250.00 XAF
Stainless steel/aluminum cooking pot with handles and lid, 10 l.	1		10,500.00 XAF	10,500.00 XAF
Stainless steel plates (deep), diam. 22cm.	6		500.00 XAF	3,000.00 XAF
Plastic cups with handle, max. 0.5 l.	7		630.00 XAF	4,410.00 XAF
Plastic jar with lid for drinking water, 2 l.	1		1,200.00 XAF	1,200.00 XAF
Stainless steel serving spoon, 35 ml.	1		900.00 XAF	900.00 XAF
Stainless steel spoons, soup, 10 ml.	6		1,250.00 XAF	7,500.00 XAF
Plastic basin, medium size, 7 l.	1		3,000.00 XAF	3,000.00 XAF
Jerry can, food grade LDPE, suitable for drinking water, rigid, screw cap. Light colour only (white, yellow), UV treated for long-term outdoor use, 20 l.	2	Preferably not the collapsible design	3,700.00 XAF	7,400.00 XAF
Heavy duty plastic bucket, without lid, 15 l.	1	Laundry	5,500.00 XAF	5,500.00 XAF
"Savo" soap bar, 250g.	6	Laundry + dishes	500.00 XAF	3,000.00 XAF
Big "Baco" bag, polypropelene bag	1	Big enough for kit transportation	3,200.00 XAF	3,200.00 XAF
Weatherproof and shockproof solar lamp / charger.	1		7,250.00 XAF	7,250.00 XAF
				127,710.00 XAF

Option 2: Emergency Shelter Kits

Name of Item	Unit Price	Quantity	Total Price
4m x 5 m Plastic Tarpaulin	XAF 45,537.57	2 pc	91,075.14
Rope	XAF 3000	1 unit	3000
Handsaw	XAF 3500	1 unit	3500
Pick Axe	XAF 2000	1 unit	2000
Shovel	XAF 3500	1 unit	3500
Hoe	XAF 3200	1 unit	3200
Nails	XAF 2200	1 kg	2200
Wooden Poles	XAF 1500	4	6000

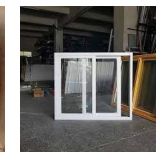
Specifications of Shelter Kit

Item	Photo	Description	Units	Status
Tarpaulin		Plastic Tarpaulin Width: 4 m x 5m (Area: 20m ²) Weight: 170g/m ² +/- 5%, plus 10% for the reinforcement bands under ISO 3801 UV Resistance: 1500 Hours under ISO 1421 Tear Strength: : minimum 100 N both directions (BS 4303 wing tear or equivalent) or under ISO 4674 (A2) Reinforcement eyelets: Provided with aluminium eyelets or equivalent on four sheet sides of the single sheets at 100 cm +/-5cm centre to centre, providing very strong fixation points.	2	Approved for both regions
Rope		Polyester rope, 12mm diameter, 50 meters, in roll.	1	Approved for both regions
Hoe		A hoe is useful for preparing the foundation of the land where the shelter will be built	1	Banned in the NW
Pickaxe		Also used to support establishing the foundation of the shelter and for breaking hard ground where the shelter will be installed.	1	Banned in the NW
Shovel		Helps in digging and preparing the foundation where the emergency shelter will be installed. Helpful in the rainy season to dig trenches to prevent water draining into the shelter.	1	Banned in the NW
Nails		1 kg 3 inch (75 mm) nails in a package. Helps seal nails to fixtures.	1 package	Banned in the NW

Item	Photo	Description	Units	Status
Hammer		A hammer is essential for hammering the nails into place and for fixing the tarpaulins to wooden poles or for fixing it to a roof to cover any openings.	1	Banned in the NW
Handsaw		Needed for cutting wood to the required size when constructing an emergency shelter structure.	1	Banned in the NW
Wooden Poles		Wooden or bamboo pole (0.04 x 0.8 x 6 m.). 4 such poles would be needed to set up the minimum emergency shelter in informal settlements	4	Decision taken by the Shelter Cluster in 2019 to not include them as part of the distribution due to the fact that bamboo and wood are found in plenty throughout the region and it would cause further harm economically and environmentally to procure and distribute
CGI Sheets		0.9m x 1.5m, minimum 0.475 mm thickness For more info: https://itemscatalogue.redcross.int/relief-4/shelter-and-construction/materials-23/construction-materials-25/corrugated-galvanised-iron-cgi-sheets-EBUJRSHE.aspx	2	Optional item proposed by Shelter Cluster partners in the Strategy revision 2022 for improving roofing conditions for IDPs who have constructed their own shelters.



Option 3: Light Repairs (ES+) 350,000 XAF Threshold per HH

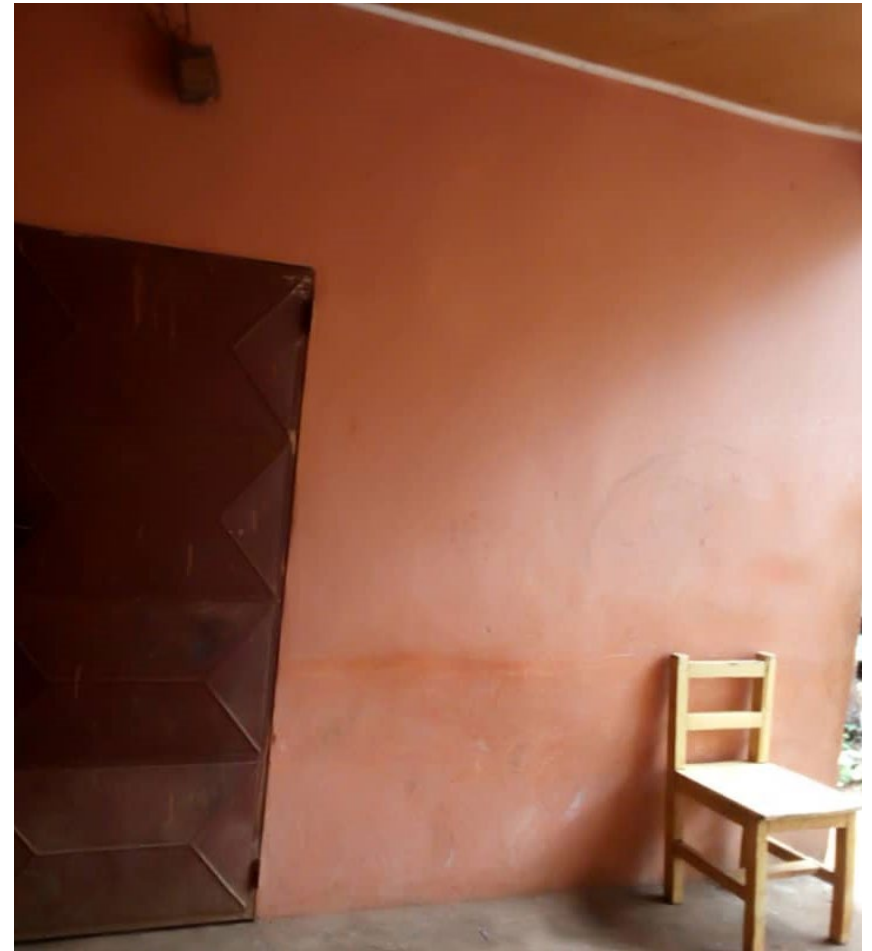


Option 4: Transitional Shelter

434,000 XAF Threshold per Unit (excludes site planning, WASH costs)



Option 5: Rental Assistance With Verification of Min. Shelter Standards and Protection Environment 29,000 XAF per HH per month, (not just giving of cash)



Intro the NEAT Activity Modules

Shelter Modules

- Siting (Site Selection) Sub-Module
- Shelter Design Sub-Module
- Shelter Materials Sub-Module
- Shelter Construction Sub-Module
- Shelter Household Items Sub-Module
- Energy Sub-Module
- Roads and Access Sub-Module

WASH Modules

Food Security Modules

Shelter (General Questions)

[S.1] How many shelters are to be constructed, reconstructed or upgraded?

[S.2] Is this a new or existing settlement?

[S.3] What type/phase of shelters would be constructed, reconstructed or upgraded?

[S.4] Are other organizations engaged in shelter and settlements programming nearby?

[S.5] Have national regulations for shelter and settlements activities been reviewed?



Shelter Siting Sub-Module

[S.S.1] What are the land and property rights for the area being assessed?

[S.S.2] How will households be provided with access to water?

[S.S.3] How will households be provided with access to energy for cooking and heating?

[S.S.4] How will households be provided with access to electricity?

[S.S.5] How will space be allocated for farming and livestock?

[S.S.6] How will households be provided with latrines?

[S.S.7] How will households be provided with drainage?

[S.S.8] Are there plans to rehabilitate/introduce vegetation or green areas around the site?

[S.S.9] What are the planned access routes to the settlement?

[S.S.10] What hazard assessments of this location are planned or have been conducted?

[S.S.11] What are the activities required to clear or prepare the site for shelter and settlement construction?

[S.S.12] To what extent has the community been consulted on site selection?

[S.S.13] To what extent have local government authorities been consulted on site selection?

[S.S.Text] Please include any additional details or comments here for the Shelter (Siting) sub-module



Shelter Design Sub-Module

[S.D.0] What is the climate of the area?

[S.D.1] Has the shelter been designed and oriented with shading for cooling?

[S.D.2] Has the shelter been designed and oriented with sunlight for natural heating?

[S.D.3] Would the shelter materials provide insulation against hot and dry weather?

[S.D.4] Would the shelter materials provide insulation against cold weather?

[S.D.5] Would the shelter materials provide insulation against warm and humid weather?

[S.D.6] Has the shelter been designed to maximize natural ventilation for cooling?

[S.D.7] Has the shelter been designed to maximize heating efficiency?

[S.D.8] Has the shelter been designed and orientated to maximize natural lighting?

[S.D.9] Has the shelter been designed with a ventilated area for cooking and/or heaters?

[S.D.10] Has the shelter been designed so it is easily maintainable by inhabitants?

[S.D.11] Can the shelter be de-constructed then transported for use in new locations?

[S.D.12] Can the shelter be easily upgraded?

[S.D.13] Has the shelter been designed to minimize vulnerability to hazards?

[S.D.Text] Please include any additional details or comments here for the Shelter (Design) sub-module



Shelter Materials Sub-Module

[S.M.1] What materials will the shelter be constructed with?

[S.M.2] How similar are materials being used to traditional or local building practices?

[S.M.3] What are the strategies used to minimize the quantities of materials in design and procurement?

[S.M.4] Will the design reuse or repurpose nearby rubble or materials (i.e. disaster waste)?

[S.M.5] What are the strategies used to dispose or reuse of existing temporary/emergency shelter materials (e.g. tarps)?

[S.M.6] How much of the shelter design uses locally available materials?

[S.M.7] What are the strategies used to ensure that materials are being procured from sustainable sources?

[S.M.8] Will the shelter design include any hazardous or harmful materials?

[S.M.Text] Please include any additional details or comments here for the Shelter (Materials) sub-module



Shelter Construction Sub-Module

[S.C.1] Are there any land clearing activities?

[S.C.2] Are there any soil compaction activities?

[S.C.3] Are there any excavation activities?

[S.C.4] How will excavated ground be managed?

[S.C.5] What are the strategies in place for storing non-water liquids?

[S.C.6] What are the strategies in place for managing construction waste?

[S.C.7] What are the strategies in place for wastewater and effluent management?

[S.C.8] What are the strategies in place for noise, air and dust management?

[S.C.9] What are the strategies in place for public and worker health and safety?

[S.C.10] Has a monitoring plan been developed (and time/funds accordingly allocated) to ensure compliance with construction mitigation measures?

[S.C.Text] Please include any additional details or comments here for the Shelter (Construction) sub-module



Household Items Sub-Module

[S.H.1] Has a household items needs assessment been conducted?

[S.H.2] Are distributed items customized to different household needs?

[S.H.3] Are there plans to reduce packaging on the items?

[S.H.4] Are there plans to procure local and sustainable items?

[S.H.5] Do the items encourage interaction with or dependence on natural resources?

[S.H.6] Are there plans to provide guidance or education for household items use?

[S.H.7] Can the items be recycled, repurposed or resold after initial use?

[S.H.Text] Please include any additional details or comments here for the Household Items sub-module



Energy Sub-Module



[S.E.1] What type of energy activities are planned?



[S.E.2] What is the main type of stoves/heaters currently being used?



[S.E.3] What is the main type of fuel currently being used?



[S.E.4] How are fuels being sourced?



[S.E.5] Is fuel (i.e. wood or charcoal) being collected and sold as a means of livelihoods?



[S.E.6] What is the main type of energy being used for household lighting?



[S.E.7] Are environmental educational campaigns planned or ongoing, for example linked to health and safety?



[S.E.Text] Please include any additional details or comments here for the Energy sub-module



Cameroon Shelter Cluster

ShelterCluster.org
Coordinating Humanitarian Shelter

Roads and Access Sub-Module

[S.R.1] Who are the users of the planned access route?

[S.R.2] What is the surface material of the planned access route?

[S.R.3] What is the land cover close to the planned access route?

[S.R.4] Are there any water bodies close to the planned access route?

[S.R.5] Will this planned access route cut through sensitive natural habitats?

[S.R.6] How does the planned access route follow the contours of the land?

[S.R.7] What drainage will the planned access route have?

[S.R.8] How will you ensure that maintenance is continued after handover?

[S.R.Text] Please include any additional details or comments here for the Roads and Access sub-module



NEAT+ Activity Modules

<https://enketo.unhcr.org/x/4l1vpNtw>

- Return to your Groups from Earlier
- Plan your response in filling out the appropriate sub-models for each activity you plan to implement
- Submit through Kobo



Debrief Results of the Activity Modules

- Recycling of Materials particularly waste created by damaged shelters
- Contextualization of NFI kits to reduce risks of waste build-up due to distribution of useless items
- Alternative-materials proposed to replace man-made materials (ie plastics)
- Change of energy source
- Sensitization on harmful cooking practices and awareness on energy
- Safer building practices promoting the use of more sustainable local materials (using existing resources)
- Use of existing facilities (repurposing) as much as possible not building new structures
- Solid Waste Management Plans (distribution of collection bins, supporting local actors in finding sites for disposal that reduce human exposure)
- Training of Shelter Committees/ collaborating with WASH, Food Security, UNDP, and others working with Natural Resource Management Committees, Common Initiative Groups, and Disaster Risk Reduction Committees on sustainable practices
- Drainage improvements on access/feeder roads to minimize waste and risk of natural hazards

HRP Indicators 2023 with Environmental Mainstreaming

- # of HHs reached with core and essential Non-Food Items that meet environmental criteria
- # of HHs assisted with distributed/installed emergency shelter materials/kits that meet environmental criteria
- # of HHs assisted with shelter that meet environmental criteria
- # of HHs assisted by constructed/repaired/rehabilitated community/public infrastructure and facilities that meet environmental criteria