



PALESTINE
SHELTER CLUSTER

Coordinating Humanitarian Shelter and Settlements

NATIONAL SHELTER CLUSTER MEETING

04 Feb 2026

INTRODUCTIONS

Jeroen Quanjer – National Coordinator

natco.palestine@sheltercluster.org

Maher Alabed– Sub-National Coordinator Gaza

coord2.palestine@sheltercluster.org

Fadi Shamisti – Sub-National Coordinator West Bank

coord1.palestine@sheltercluster.org

Iyad Abu Hammam – Gaza Coordinator

coord.gaza@sheltercluster.org

Mauricio Tautiva

coord4.gaza@sheltercluster.org

Mohammad Aklouk – IM Coordinator

im1.palestine@sheltercluster.org

Haneen Al Tali – IMO Gaza

im2.palestine@sheltercluster.org

Musab Hazam – IMO Westbank

im3.palestine@sheltercluster.org

Jehan Salim –Technical Coordinator

techco.palestine@sheltercluster.org

Marwah Adil –Technical Co-Coordinator

techco2.palestine@sheltercluster.org

Sneha Malani – Shelter Cluster Technical Advisor

Sneha.Malani@crs.org



Fadi Shamisti
Coordinator West Bank
NRC
+972 (0)54 666 3902
coord1.palestine@sheltercluster.org



Iyad Abu Hamam
Cluster Coordinator, Gaza
NRC
+972 (0)59 707 7233
coord.gaza@sheltercluster.org



Maher Alabed
Shelter Cluster Sub National
Coordinator- Gaza
NRC
+972 (56) 2562663
coord2.palestine@sheltercluster.org



Sneha Malani
Shelter Cluster Technical Advisor
CRS
Sneha.Malani@crs.org



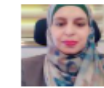
Mohammed T. Al Aklouk
Cluster Information Management
Coordinator Palestine
NRC
+972 (0)595911995
+972 (0)562562445
im1.palestine@sheltercluster.org



Jeroen Quanjer
National Coordinator Shelter Cluster
Palestine
NRC
+962791223485
+972542776886
natco.palestine@sheltercluster.org



Jehan Salim
Shelter Cluster Technical Coordinator
Palestine
NRC
techco.palestine@Sheltercluster.org



Haneen Al TALI
Information Management Officer Gaza
NRC
im2.palestine@sheltercluster.org



Mauricio Tautiva
Shelter Cluster Co-Coordinator
IOM
+962 7 9761 0866
coord4.palestine@sheltercluster.org



Marwah Adil
Shelter Cluster Technical Co-
Coordinator
IOM
techco2.palestine@sheltercluster.org



Musab Marmash
Information Management Officer- WB
NRC
im3.palestine@sheltercluster.org

Website - <https://sheltercluster.org/response/palestine>

Email Registration - [Shelter Cluster Mailing List Registry](#)

AGENDA

- National Update
- Gaza update
- West Bank update
- Information Management Update
- Technical Coordination Update
- Open discussion
- AOB

CONTEXTUAL / NATIONAL UPDATE

CMCC – enabling conditions for delivery and winterization 2026–2027

- Push to move from line-item by line-item approvals toward more projectized requests for Phase 2 / next winter season

Gaza – (details by Gaza sub-cluster)

- Situation described as operationally relatively calm, but security incidents are driving renewed displacement and further damaging already fragile shelter conditions.
- Material shortages remain a limiting factor (tents/tarpaulins scarce)
- Positive note: UNICEF is receiving 75,000 tarpaulins for distribution through cluster partners

West Bank – (details by WB sub-cluster)

- Displacement response ongoing; coordination tightening to reduce overlap

Technical approaches – cluster-wide coherence

- RHU Shelter cluster guidelines
- Protection alignment: vulnerability/referral for RHU is in discussion with the Protection Cluster
- Tools to strengthen quality & reduce burden: 5W improvements, bilingual PDM, IEC for makeshift shelters, bi-monthly market monitoring



PALESTINE
SHELTER CLUSTER

Coordinating Humanitarian Shelter and Settlements

GAZA UPDATE



GAZA UPDATES

Response Jan

- In total, over January, more than 85,850 families were reached with SNFs, including 5622 tents, 40,343 tarpaulins, 163,487 bedding kits and items, 16,488 kitchen sets and vouchers, 4,994 clothing kits and vouchers, and 1862 SOK.
- Meanwhile, 5,549 families were reached through the intersectoral joint package flood response.
- Reduced availability of tents and tarpaulins

Intersectoral Joint Distributions – Shelter Component

- Due to tent shortages:
 - Joint distributions are currently proceeding without tents.
 - Tent replacements include: 3 tarpaulins + plastic film 3mm
- Partners with the capacity to support joint distributions with items are requested to contact the Shelter Cluster.
- **SNAPSHOT ON SHELTER & NFI IN JANUARY– GAZA**

	Entered	Distributed
 TENTS	51.79K	44.46K
 TARPS	63.73K	135.82K



December 2025

Joint Package



SNAPSHOT OF RAINSTORM ON SHELTER & NFI IN JANUARY– GAZA

GAZA UPDATES

Ongoing pipeline constraints continue to affect planning and response scale, Pipeline challenges reported by partners:

- Donation numbers required for customs
- 10-day advance notification required before dispatch dual use items
- Kits to be repackaged individually; items to be submitted individually
- Questions raised on large quantities of some items
- Re-submission of requests
- Approvals followed by rejections at dispatch stage
- INGO registration remains a bottleneck
- Unclear approved items and dual-use items

Contingency & Emergency Response Capacity

In light of pipeline depletion, there is a need to maintain contingency stock to respond to urgent and unforeseen needs, including:

- Critical referral cases from other Clusters and AoRs
- Households in high-risk buildings
- Hypothermia cases
- Unserved sites
- Incidents reports

GAZA UPDATES

Relocation as a Last Resort

- Ongoing coordination continues with: OCHA, Relevant clusters, Municipalities, Committees and other operational actors
- The Shelter Cluster provides materials support where required.
- Several Site plans have been shared with clusters for feedback.
- Shelter Cluster to receive a list of inhabitants in nearly collapsed buildings to support people who wish to evacuate the buildings.

Fuel Update : Submission of Monthly Fuel Requirements (1st of February to 28 February 2026)

- Partners submitted fuel requirements and approved
- UNOPS confirmed that benzine requirements are primarily considered for operational activities and should be communicated directly to UNOPS, without cluster intermediation.
- Partners were requested to ensure that fuel submissions to the Shelter Cluster are limited to diesel requirements for shelter programmatic activities only, while operational fuel needs should be submitted directly to UNOPS.

Daily reports will shift to twice weekly, to be submitted on Tuesday and Saturday.

- Organizations unable to submit on Saturday may submit their report on the preceding Thursday.
- Timely submission of assessed and served site data with coordinates to support coordination, reduce duplication, and enable partners to plan distributions more effectively.



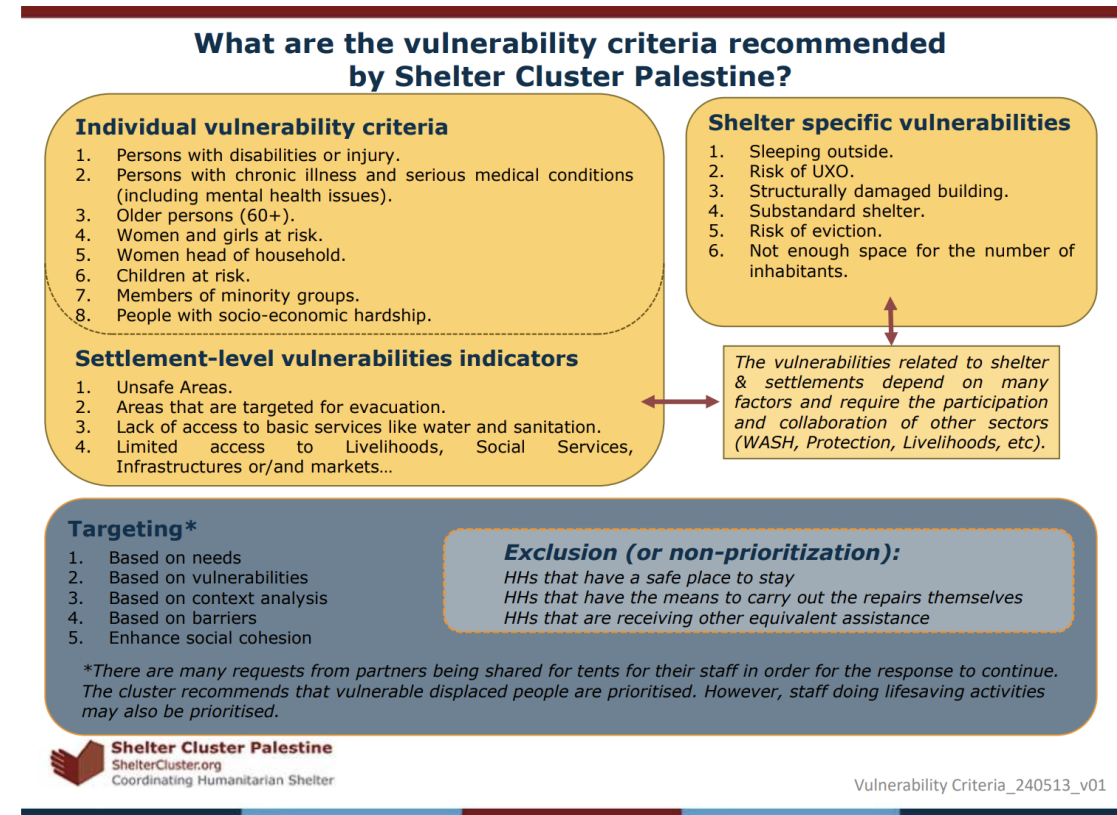
PALESTINE
SHELTER CLUSTER

Coordinating Humanitarian Shelter and Settlements

Technical Update

Technical Updates: Gaza

- The **5W activity list** has been updated to include additional activities. An orientation will be carried out in coordination with IM team to roll-out the new template next month.
- **Cluster IEC in progress on improving makeshift shelters**, using the work already done by cluster partners MAAN and Heks Eper
- **Vulnerability prioritization:** In coordination with Protection Cluster, a scoring criteria is being developed to support partners for targeting households for shelter and NFI assistance.



How are partners applying SC vulnerability criteria?

TWG Updates

- **Cash and Markets for Shelter TWG:** Item list is revised in coordination with SMC for round 2 market monitoring. Data collection to be completed before Ramadan and report to be published in March.
- **Emergency Damage Assessment:** NPM is working on a report documenting current damage levels based on UNOSAT data, and a dashboard to track damage assessments.

Timber Section

Item	Specifications	Unit
Timber Section	Timber section may be of varying sizes and lengths. Example: 5cmx5cm or 5cmx2.5cm section size	per meter



5x2.5 timber section



5x5 timber section

Nails

Item	Specifications	Unit
Nails	20 to 30 mm nail (used for cladding of tarpaulin)	per meter
	40 to 60 mm (for use on timber and concrete)	



20mm nails



40mm nails

Household-level Solar Lights

Item	Specifications	Unit
Household Solar lights	Provides lighting for no less than 5 hours, 3-5 Watts (note: do not consider hand-held torches)	pieces



Site level Solar Light

Item	Specifications	Unit
Site level Solar Light	Water grade/outdoor flood light (~50W for site level coverage) with solar panel, battery and 6-8m mounting pole, light time of 10+ hours	pieces



Technical Updates: West Bank

- A technical working group has been set up for West Bank consisting of 9 member agencies.
- Members voted on priority topics.
- Technical team is currently working on shelter modality and response options.
- Next TWG tentatively on 18 February

 [Poll: TWG members: Please rank the following topics for the TWG to pri](#)  

TWG members: Please rank the following topics for the TWG to prioritize, in order of preference

Shelter modalities and response options

Cash for shelter repairs

Occupancy free of charge and reduced rent

Damage Screening tools

NFI kits

9 responses



PALESTINE
SHELTER CLUSTER

Coordinating Humanitarian Shelter and Settlements

ESK IEC Update by CRS



PALESTINE
SHELTER CLUSTER

Coordinating Humanitarian Shelter and Settlements

Damage Assessment by AIOCP

WB UPDATE

WB UPDATES

1. Joint Damage Assessment in the Three Camps

- A joint coordination workshop was conducted on 28 January to discuss and agree on the approach, scope, and methodology for initiating a damage assessment in the three camps.
- The exercise will be carried out through joint efforts involving UNRWA, Governorate Offices, Camp Popular Committees, OCHA, and the Shelter Cluster.
- The assessment **will focus exclusively on totally and severely damaged housing units**, as identified through satellite imagery analysis. **Minor damage cases will be excluded** from this phase of the assessment.
- Initial datasets for Tulkarem and Nur Shams camps are already available; however, these figures require verification and validation before finalization. Building on the Tulkarem experience, Jenin camp will replicate the same assessment methodology to ensure consistency across locations.
- It is anticipated that data-sharing protocols and hosting arrangements will be finalized by 14 February.
- **The primary outcome of this assessment will be a verified and comprehensive list of households** whose homes were destroyed or severely damaged inside the camps, to inform response planning and advocacy.

WB UPDATES

2. Displacement of Ras Ein Al-Auja Community

- Ras Ein Al-Auja community is currently **entirely displaced**, comprising approximately 115 households, now scattered across multiple locations including An Nuweima, Al-Auja, Al Jiftlik, Yatta, and Al-Eizariya.
- Humanitarian partners (ACF, PUI, NRC, ACTED, and Oxfam) have responded/plan to respond by providing Emergency Household Items (EHIs) such as blankets, kitchen sets, heaters, and clothing, in addition to shelter-related assistance, to displaced families in their temporary locations.

3. Humanitarian Fund Allocation

- An allocation of USD 1.0 million has been approved under the Humanitarian Fund (HF) for selected partners operating in the West Bank.
- The funding aims to address critical unmet shelter and humanitarian needs, **particularly in Area C and supporting IDPs.**

4. Settler Violence and Property Destruction

- Palestinian communities continue to face regular and systematic settler attacks. The most recent and severe incident occurred in **Masafer Yatta, where multiple properties were set on fire.**
- These incidents have been documented and recorded, further highlighting the protection risks faced by affected communities.

WB UPDATES

5. Development of Standardized Shelter Response Options

- The **Shelter Cluster Technical Team**, in collaboration with the **activated Technical Working Group**, has initiated the development of a **standardized “Shelter Menu”** of response options.
- This initiative aims to support partners in delivering **consistent, coherent, and technically sound shelter responses**, while **preserving flexibility** to adapt interventions based on **contextual dynamics, evolving conditions, and emerging needs** on the ground.

6. E1 Settlement Plan Developments

- Israeli authorities have published a **tender for the construction of the E1 settlement**, enabling the government to proceed with awarding construction permits for **3,401 new settlement units**.
- Implementation of the E1 Plan is expected to result in the **displacement of all Palestinian communities located within the plan’s boundaries**, affecting **more than 18 communities**. This development carries significant humanitarian, protection, and displacement implications.



PALESTINE
SHELTER CLUSTER

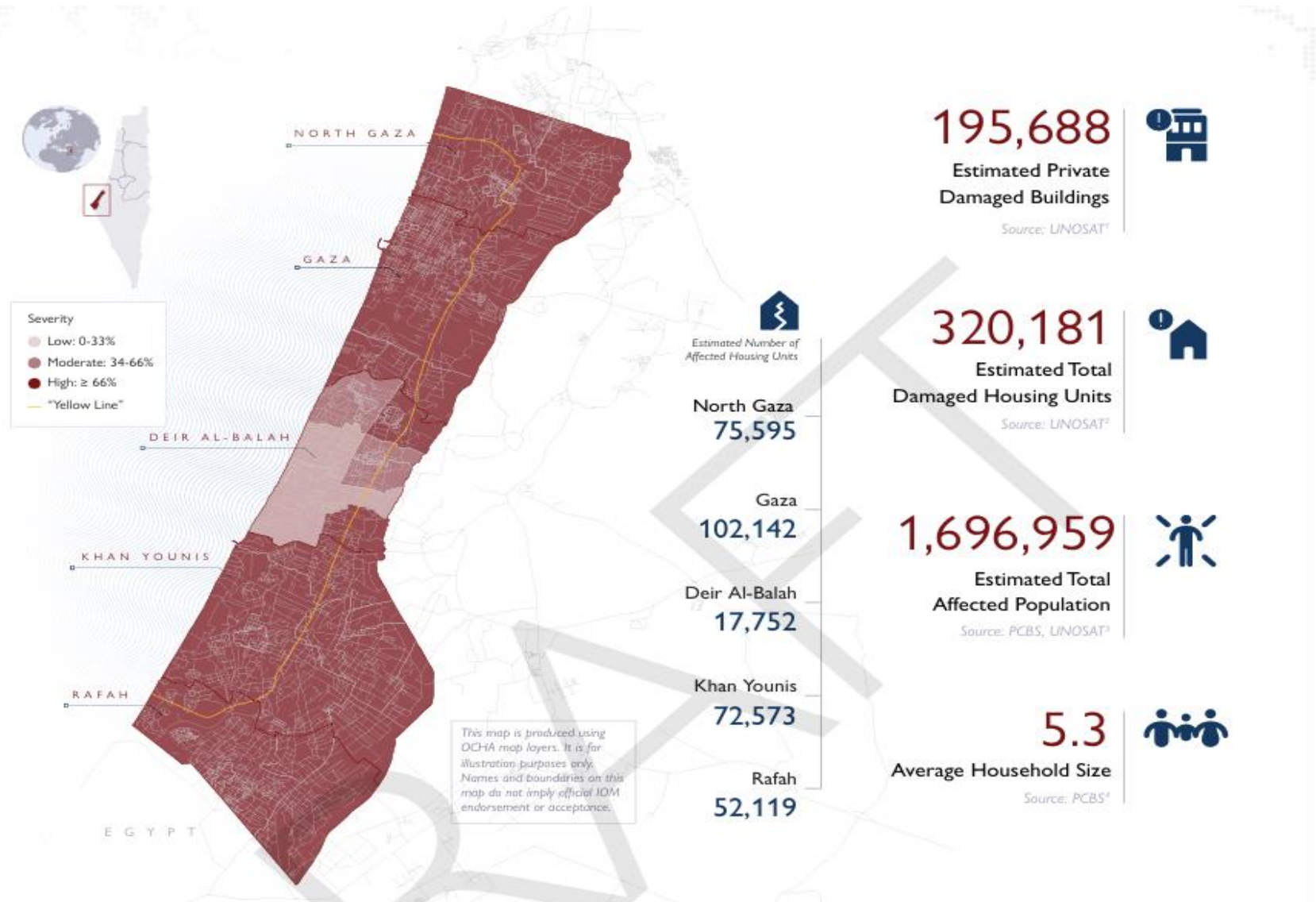
Coordinating Humanitarian Shelter and Settlements

IM UPDATE

GAZA

SHELTER DAMAGE OVERVIEW

JAN 2026



195,688

Estimated Private Damaged Buildings

Source: UNOSAT¹



320,181

Estimated Total Damaged Housing Units

Source: UNOSAT²



1,696,959

Estimated Total Affected Population

Source: PCBS, UNOSAT³



5.3

Average Household Size

Source: PCBS⁴



Estimated Number of Affected Housing Units

North Gaza
75,595

Gaza
102,142

Deir Al-Balah
17,752

Khan Younis
72,573

Rafah
52,119

This map is produced using OCHA map layers. It is for illustration purposes only. Names and boundaries on this map do not imply official IOM endorsement or acceptance.

Shelter Cluster Dashboard New Analysis



PALESTINE
SHELTER CLUSTER

Coordinating Humanitarian Shelter and Settlements

Discussion / Q&A / AOB

Upcoming meetings (Gaza Time)

	Date	Time
National SAG: TBC		
Gaza Shelter Cluster meeting	10 Feb 2026	12:00
Gaza SAG meeting	12 Feb 2026	12:00
WB Shelter Cluster meeting	24 Feb 2026	10:00
WB SAG meeting	17 Feb 2026	10:00
TWG – Emergency Damage Assessment	11 Feb 2026	13:00
TWG – Cash and Markets for Shelter	17 Feb 2026	11:00
Next National Shelter Cluster meeting	18 Feb 2026	13:00
