



PALESTINE
SHELTER CLUSTER

Coordinating Humanitarian Shelter and Settlements

NATIONAL SHELTER CLUSTER MEETING

05 March 2025

AGENDA

- Introductions
- General Update
- Gaza Updates
- WB Updates
- IM Update
- Technical Update
- Discussion
- AOB

INTRODUCTIONS

Choungkyu Ryu (CK)– National Cluster Coordinator

natco.palestine@sheltercluster.org

Maher Alabed– Sub-National Coordinator Gaza

coord2.palestine@sheltercluster.org

Fadi Shamisti – Sub-National Coordinator West Bank

coord1.palestine@sheltercluster.org

Iyad Abu Hammam – Gaza Coordinator

coord.gaza@sheltercluster.org

Mohammad Aklouk – IM Coordinator National

im1.palestine@sheltercluster.org

Leandro Fernandez-Jardon – Technical Coordinator

techco.palestine@sheltercluster.org

<https://sheltercluster.org/response/palestine>

GENERAL UPDATE

- **Changing Operational Environment**

- Gol's announcement leading supply chain freeze and needs for prioritization (Gaza ICCG meeting)
- Increasing Military Operation in WB and Resource Allocation
- Stop work order (to be discussed during the discussion session)

- **Structured SC Coordination**

- Co-Coordination discussion
- SC Membership management
- Establishment of SAG for WB
- Systemic Information Sharing Request / Response
 - : Unification of communication/reporting channel, Dashboard Update, Shleter reporting cycle for Gaza

Procedure / Schedule

Activities		Timeframe
Initial SAG discussion	Co-coordinating discussion was initiated / SAG member feedback received / Bilateral discussion between SC and SAG member was requested	27/Feb
Initial Bilateral Discussion	Agreeing upon the way forward and timeframe and understanding the synergy of co-coordinating considering staffing/resources needs, expected strategic focus (balancing humanitarian response and recovery), presence in opt, previous engagement and etc.	26-27/Feb
Co-Coordination Model Development	Based on the bilateral discussion outcome, SC conducts analysis and propose a draft for co-coordinating model	By 11/Mar
Feedback/Discussion on the Proposed Model	Based on the draft, SC and candidates continue the bilateral discussion based on the feedback. <u>To have a common understanding, finalize the discussion through trilateral discussion.</u>	By 21/Mar
SAG Consultation/ Endorsement	Trilaterally agreed co-coordinating model is presented to the SAG members and each SAG member (excluding candidate agencies) share their evaluation based on predefined scoring criteria to keep the selection procedure more transparent with quantitative data and facilitate endorsement based on the evaluation outcome	By 31/Mar
NSC Presentation	The endorsed model is presented to SC partners during the NSC meeting	2/Apr
Conclusion of MoU/ Official Announcement	SC and co-coordinator conclude MoU and officially confirm.	30/Apr

GAZA UPDATES

Tents distribution Plan

- Prepared by the shelter cluster to facilitate speeding up, tracking of entry and distribution of tents,
- Since 19 Feb until 3 March, 23,308 tents were distributed bringing the total number of tents distributed to 112,939 out of 130,400 tents received since the ceasefire. Still, there are 19,000 tents in the stock and 57,587 in the pipeline.
- It was noted that since 1st of March, many partners reduced the distribution due to uncertainty of the supply chain recovery while discussing about the way forward whether keep continuing distribution the same as phase 1 or keeping the stock to be prepared for the worst-case scenario. Also, it was understood that reduced working hours during the Ramadan also impacted the low distribution.

ESK/Framing Kits

- One partner has received additional quantity of framing kits,
- A video was produced to support the work of the Gaza Technical Working Group of Palestine Shelter Cluster, published both in English and Arabic and shows techniques to build covered shelter out of the Emergency Shelter Kit with timber size of 2.5cm x 5cm

GAZA UPDATES

HF 1st reserve allocation Projects

- 7 partners submitted their project on the GMM system,
- Total budget for shelter cluster USD 6M
- The projects are still in the technical review stage,
- Main focus is to provide SOK, ESK, FK, clothes and winter bedding items

Other

- Finally, we are able to expand our coordination support to partners, the subnational cluster coordinator has arrived to Gaza, and the cluster coordination team currently have better access to Gaza city and the North,

WB UPDATES:

Updated figures of Displacement:

- The total number of displaced people as of 26 February is 37,396 people, with 15,340 people displaced from Jenin RC, 12,325 from Tulkarem RC and 9,731 people from Nur Shams RC.
- Less than 5% of the IDPs living in the collective center and the majority of IDPs are living with relatives and rented accommodation.
- The key needs for the people living in the collective collective shelters are:
 - **Rental cash assistance** to support relocation from collective centers.
 - **Non-Food Items (NFIs)**, primarily **dignity kits and kitchen kits**.
 - **Bedding kits are deprioritized** for now, as sufficient quantities have already been distributed and are in the pipeline.
- Next week, **UNRWA** will begin **field tracking** to assess the needs of **IDP families living outside collective shelters**.
- Discussion on the resource mobilization is on-going

WB UPDATES:



OPT: North West Bank IDPs due to the Israeli forces' operations

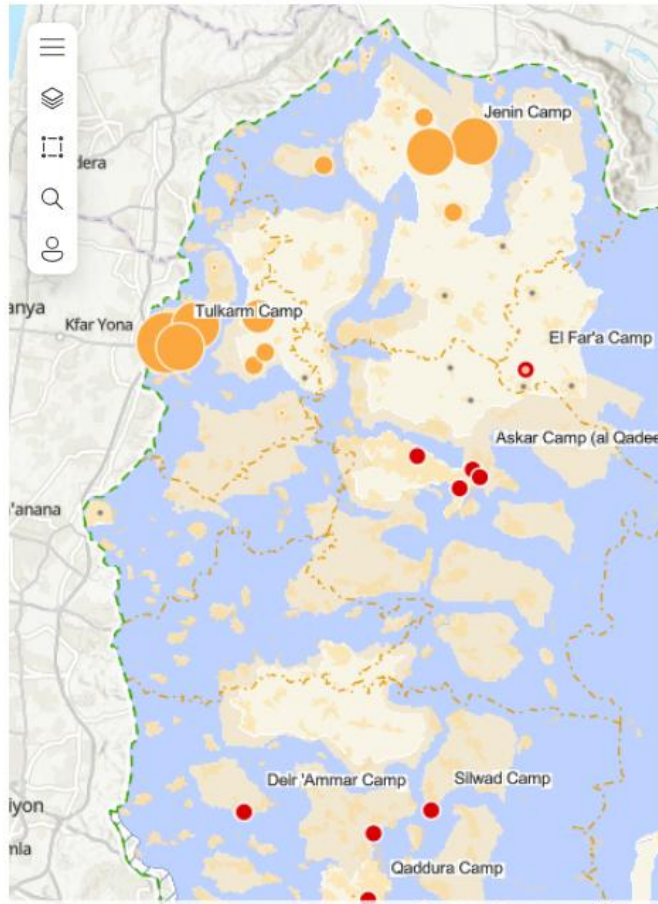
Updated as of

2025-02-28

37K

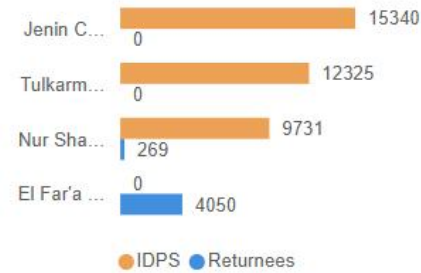
IDPS

IDPs in North West Bank

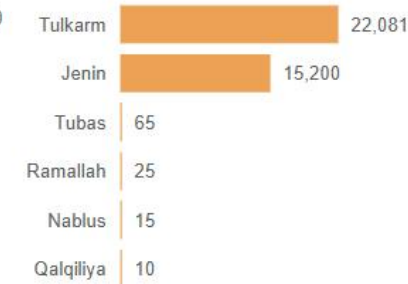


Esri, CGIAR, USGS | Esri, TomTom, Garmin, Foursquare, FAO, ... Powered by Esri

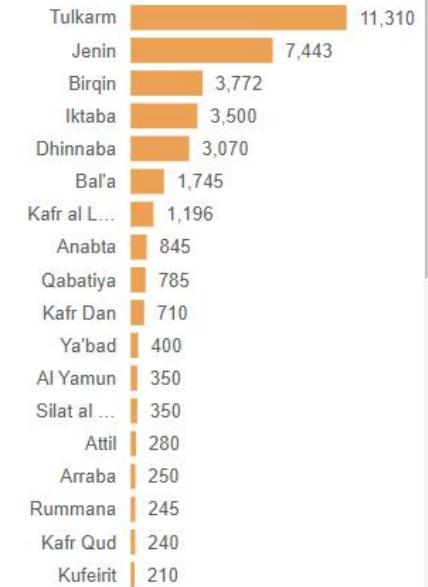
IDPS from original community



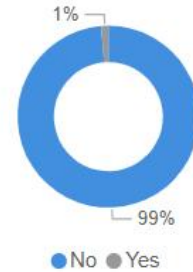
IDPS by hosting governorate



IDPS by hosting cc



Public shelter



DRAFT

OriginalCommunity	OriginalGov	IDP Households	IDPS	community	PublicShelter	ContactName	Mobile
El Far'a Camp	Tubas	0	0	Aqqaba	No	UNRWA	
El Far'a Camp	Tubas	0	0	Az Zababida	No	UNRWA	
El Far'a Camp	Tubas	0	0	Meithalun	No	UNRWA	
El Far'a Camp	Tubas	0	0	Sanur	No	UNRWA	
El Far'a Camp	Tubas	0	0	Talluza	No	UNRWA	
Total			7,485	37,396			

WB UPDATES:

Items distributed and Pipeline

Item	Distributed	Remaining	Pipeline Quantity	Total	Source of Pipeline
Jenin					
Blankets	2,123	212	2,500	4,835	WeWorld
Mattresses	2,075	28	2,500	4,603	WeWorld
Pillows	1,651	241	2,500	4,392	WeWorld
Kitchen Kits	104	76	68	248	UNRWA Flash Appeal
Tulkarem					
Blankets	684	264	2,900	3,848	ACF, WeWorld, PUI funding for bedding NFIs
Mattresses	446	0	2,900	3,346	ACF, WeWorld
Pillows	398	2	2,900	3,300	ACF, WeWorld
Kitchen Kits	0	0	65	65	UNRWA

West Bank Protection Consortium

Mahar Alsaleh – WBPC Project Manager

This presentation provides an update on Acted's response and activities related to demolitions and confiscations in the West Bank, focusing on trends and achievements as of February 2025



2024 Updates and Achievements per Area

1. North Area

The recorded number of demolished structures includes **517 residential buildings**, **180 livelihood-related structures**, and **25 WASH facilities**.

2. South Area

The recorded number of demolished structures includes **91 residential buildings**, **157 livelihood-related structures**, and **41 WASH facilities**

3. Central Area including EJ

The recorded number of demolished structures includes **140 residential buildings**, **293 livelihood-related structures**, and **45 WASH facilities**.

4. East Jerusalem

The recorded number of demolished structures includes **151 residential buildings**, **66 livelihood-related structures**.



Demolition Incident in Ras Al 'Amud – East Jerusalem

Trends and Evolutions

1. Surge in Demolition

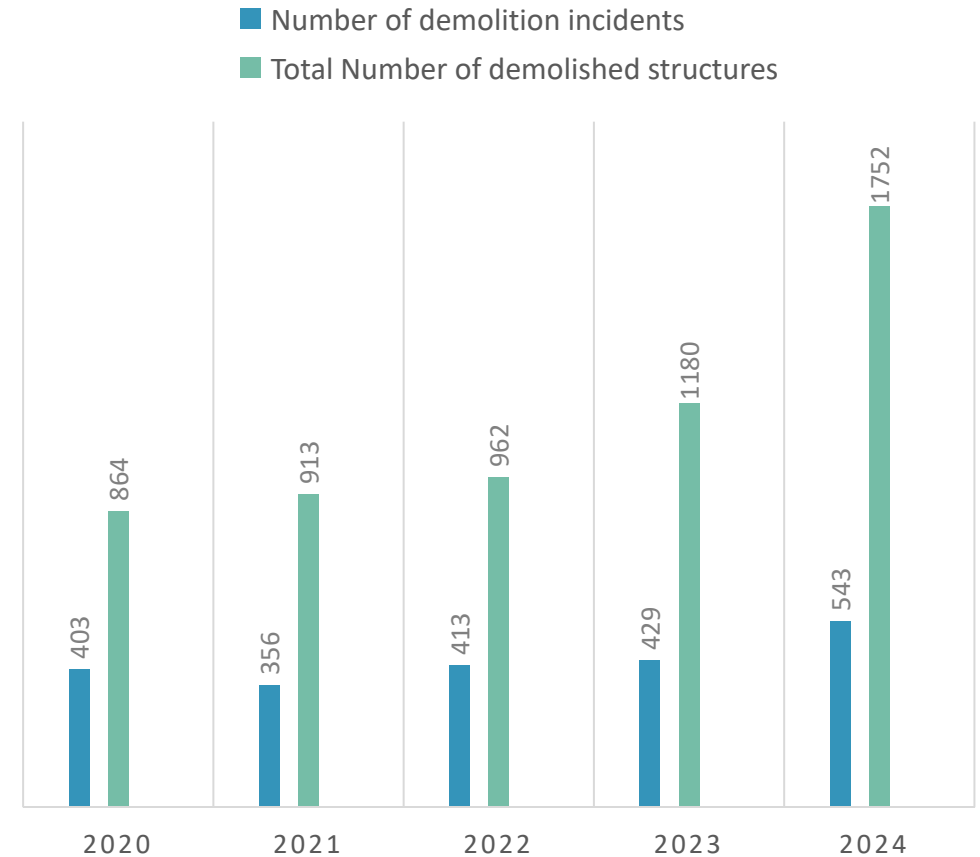
In 2024, demolition incidents recorded **peaked at 543**, reflecting a **21% increase** compared to 2023. In Parallel, the number of demolished structures reached **1,752**, marking a **33% rise** from last year.

2. Demolition in 2025

In 2025 , an increase in demolish incident and structure was recorded. In February 155% increase in the demolished structures was observed compared to the same month in 2024.

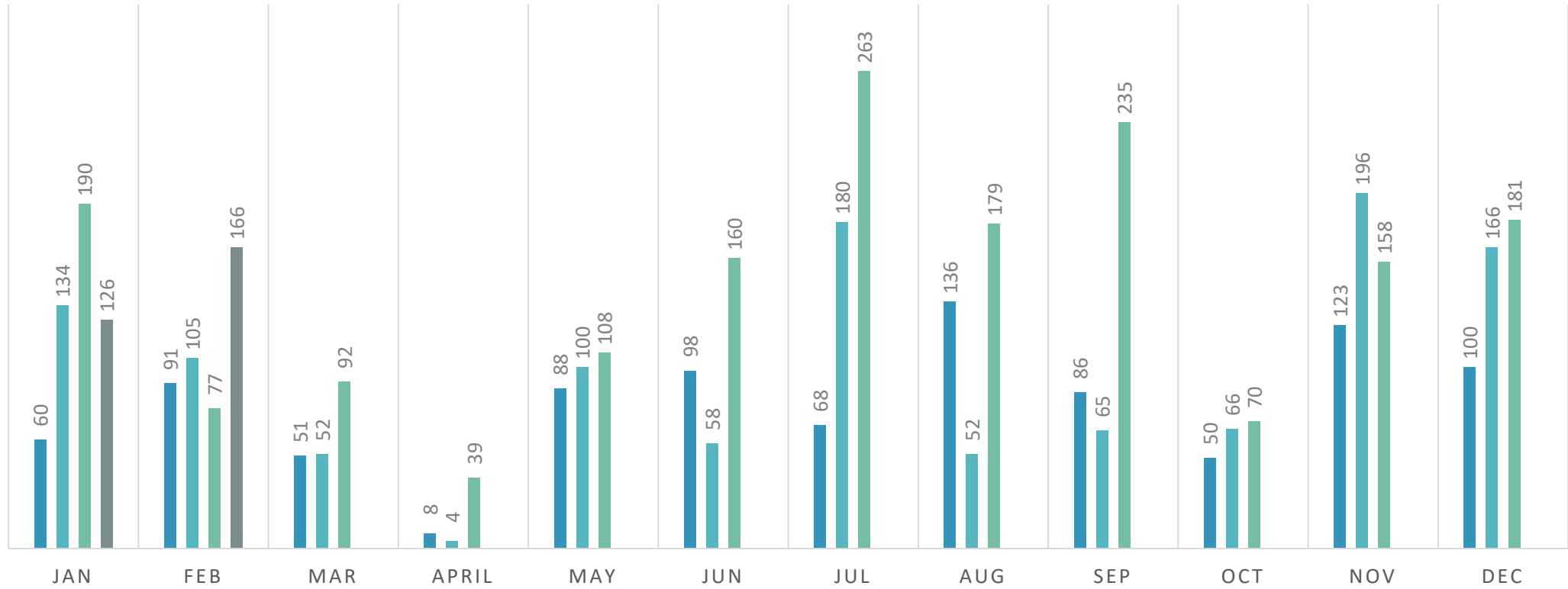
3. Predominance in Cash Assistance

In 2024, Acted provided assistance to **228 HH** through In-Kind assistance, alongside the **711 HH** with Cash response. It is expected these figures will increase in 2025, driven by the on-going escalation of demolitions



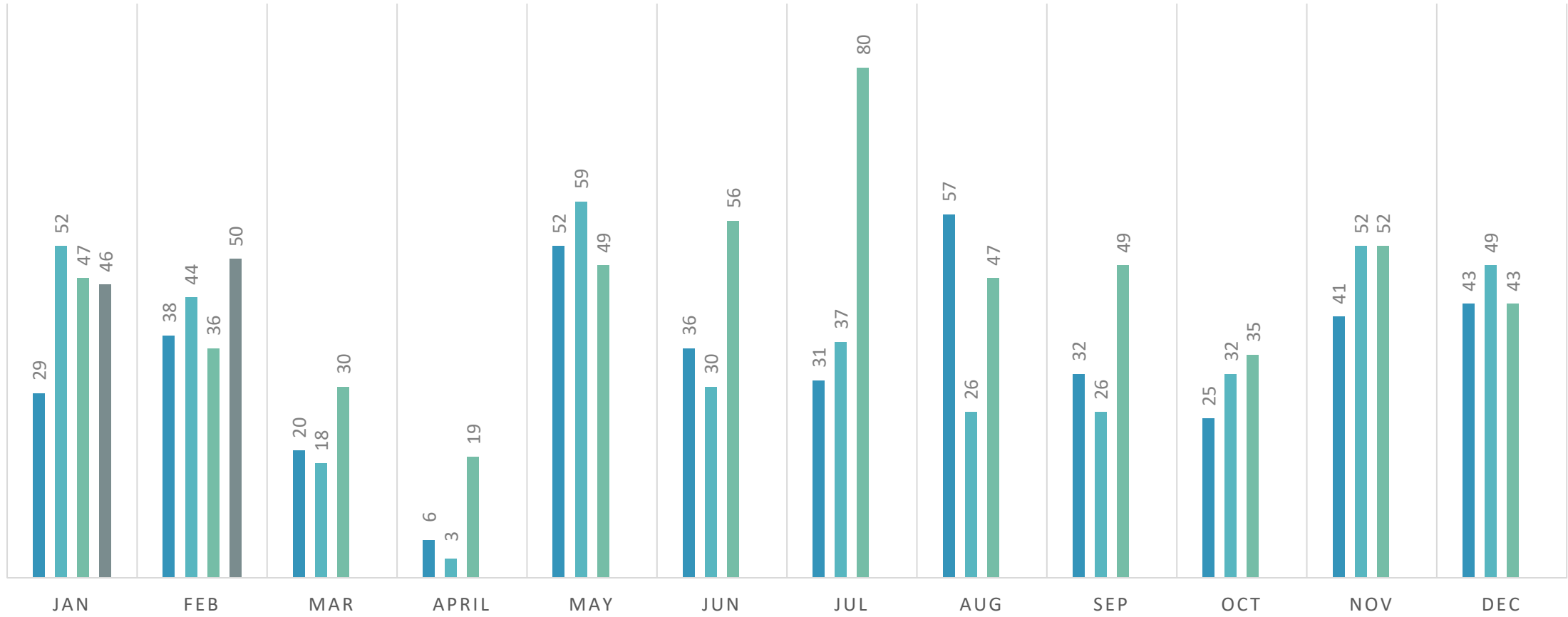
DEMOLISHED STRUCTURES MONTHLY COMPARISON

■ 2022 ■ 2023 ■ 2024 ■ 2025



DEMOLISH INCIDENTS MONTHLY COMPARISON

■ 2022 ■ 2023 ■ 2024 ■ 2025



END OF PRESENTATION

THANK YOU

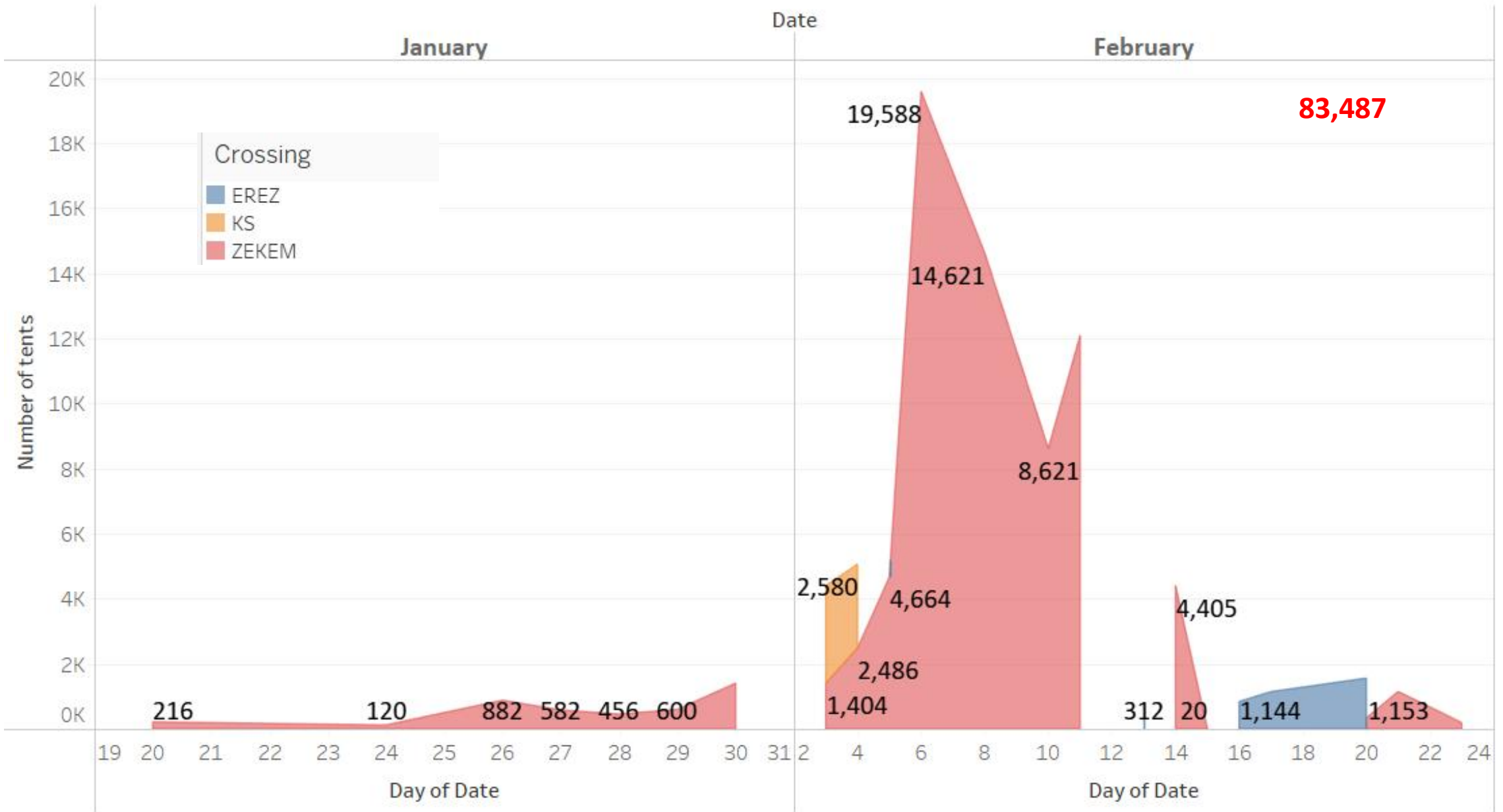


PALESTINE
SHELTER CLUSTER

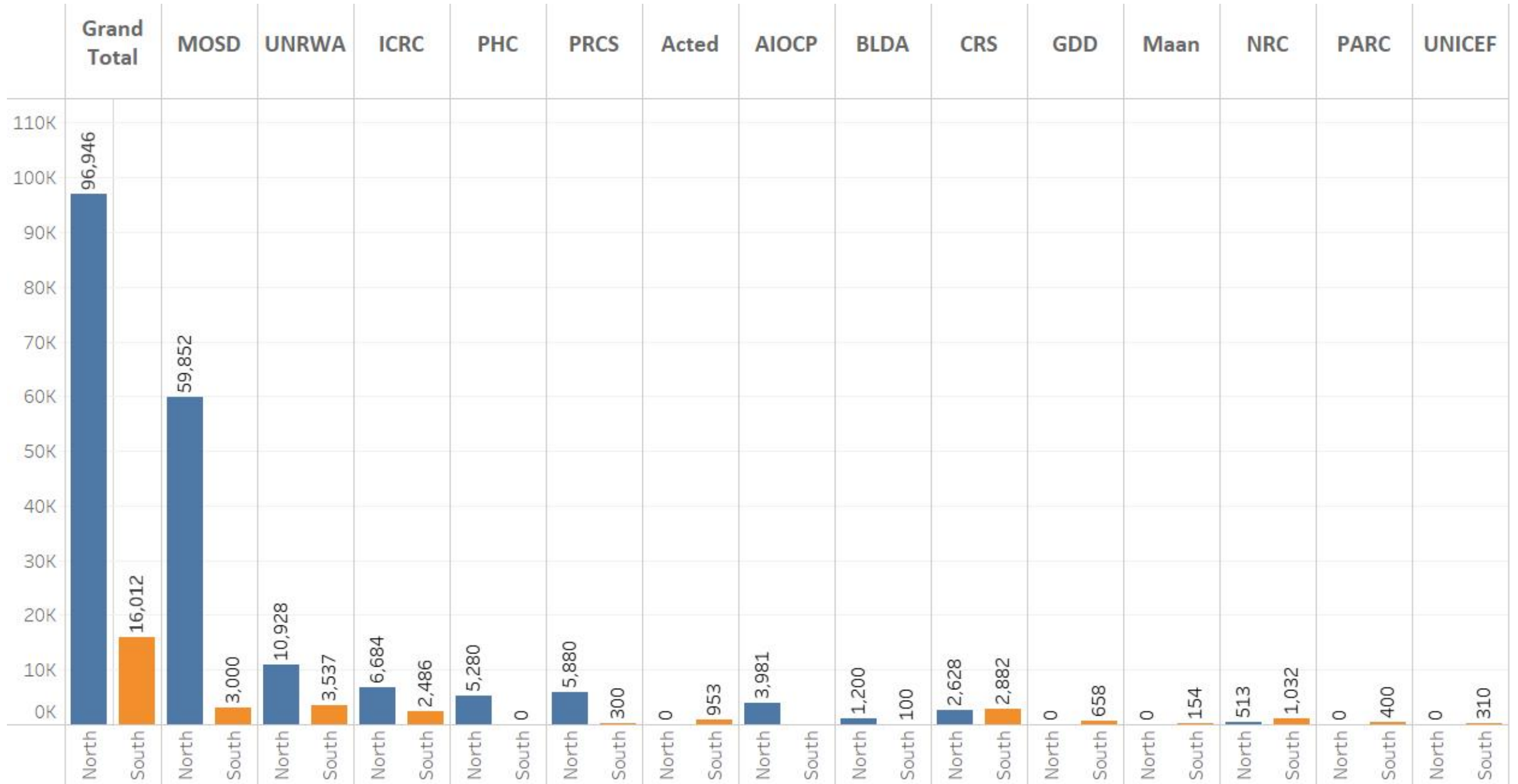
Coordinating Humanitarian Shelter and Settlements

IM UPDATE

IM UPDATES: The number of tents that entered daily according to the MOSD statistics.



IM UPDATES: Tents Distribution Per Organization



IM UPDATES: Items Still in Stock Per Organization

Organization	Tents	Sealing off materials	Bedding items	Cloths	ESK	Kitchen Sets	Radios	Searchlight
CRS	1,930	10,998	28,321			777		
MAAN	0	4,267	4,328	11,900		250		1,492
UNRWA	6,532		6,305					
Gazze Destek Organ..			11,300					
BLDA		5,000			135			
NRC	1,976	780						
AIOCP	2,683							
ACTED	0	450		80			403	
UNICEF	1,720							
PRCS	1,620							
PHC	1,300							
IRW		1,100						
ACF	900							
HEKS/EPER		565	29					
Others	47							
Grand Total	18,708	23,160	50,283	11,980	135	1,027	403	1,492

IM UPDATES: Pipeline Information

Items (group)	Egypt	Israel	Jordan	Grand Total
Sealing Off materials	696,194	214,675	596,603	1,507,472
Mats	386,738	1,875	389,617	778,230
Blankets	39,619	515,000	51,500	606,119
Mattresses	287,099		298,750	585,849
Bedding set	135,800		132,064	267,864
Kitchen kit	50,900		51,064	101,964
Cloths	24,010		44,540	68,550
Tents	33,555		23,950	57,505
Searchlight	17,186		12,500	29,686
Framing and Tool Kits	3,610		1,260	4,870
Tool Kit	1,800			1,800
Solar mosquito trap	1,200			1,200
Sleeping Bags	1,200			1,200
prefabricated units		1,000		1,000
Pillows	76			76

IM UPDATES: Gap Analysis

Category	Item	People Covered	Gap Without Pipeline	Pipeline Contribution	Gap After Pipeline
NFIs	Bedding Items	1,164,086	535,914	873983	Need Fully Covered
NFIs	Kitchen Set	116,325	1,583,675	509820	1,073,855 (Remaining Gap)
Shelter	Tents	693,330	1,006,670	292,935	713,735 (Remaining Gap)
Shelter	SOKs	1012300	687,700	1377127.5	Need Fully Covered



PALESTINE
SHELTER CLUSTER

Coordinating Humanitarian Shelter and Settlements

TECHNICAL UPDATE

Technical UPDATES

- Minimum standards for standalone Transitional Shelter solutions
- IEC materials for ESK

Technical Meeting on ESK & Transitional Shelter
12th March 11.30 Jerusalem time



PALESTINE
SHELTER CLUSTER

Coordinating Humanitarian Shelter and Settlements

Discussion/Q&A

Discussion

- Impact of Stop Work Order
 - SC partners initiated the assessment on the impact
 - Total budget allocated in the shelter programme in USD
 - Impacted budget in the shelter programme in USD and %
 - Impacted # of staffs in the shelter programme
 - Timeframe for submission

What are the vulnerability criteria recommended by Shelter Cluster Palestine?

Individual vulnerability criteria

1. Persons with disabilities or injury.
2. Persons with chronic illness and serious medical conditions (including mental health issues).
3. Older persons (60+).
4. Women and girls at risk.
5. Women head of household.
6. Children at risk.
7. Members of minority groups.
8. People with socio-economic hardship.

Settlement-level vulnerabilities indicators

1. Unsafe Areas.
2. Areas that are targeted for evacuation.
3. Lack of access to basic services like water and sanitation.
4. Limited access to Livelihoods, Social Services, Infrastructures or/and markets...

Shelter specific vulnerabilities

1. Sleeping outside.
2. Risk of UXO.
3. Structurally damaged building.
4. Substandard shelter.
5. Risk of eviction.
6. Not enough space for the number of inhabitants.

The vulnerabilities related to shelter & settlements depend on many factors and require the participation and collaboration of other sectors (WASH, Protection, Livelihoods, etc).

Targeting*

1. Based on needs
2. Based on vulnerabilities
3. Based on context analysis
4. Based on barriers
5. Enhance social cohesion

Exclusion (or non-prioritization):

*HHs that have a safe place to stay
HHs that have the means to carry out the repairs themselves
HHs that are receiving other equivalent assistance*

**There are many requests from partners being shared for tents for their staff in order for the response to continue. The cluster recommends that vulnerable displaced people are prioritised. However, staff doing lifesaving activities may also be prioritised.*



PALESTINE
SHELTER CLUSTER

Coordinating Humanitarian Shelter and Settlements

AOB