



PALESTINE
SHELTER CLUSTER

Coordinating Humanitarian Shelter and Settlements

NATIONAL SHELTER CLUSTER MEETING

12 Nov 2025

INTRODUCTIONS

Jeroen Quanjer – National Coordinator

natco.palestine@sheltercluster.org

Maher Alabed – Sub-National Coordinator Gaza

coord2.palestine@sheltercluster.org

Fadi Shamisti – Sub-National Coordinator West Bank

coord1.palestine@sheltercluster.org

Iyad Abu Hammam – Gaza Coordinator

coord.gaza@sheltercluster.org

Mohammad Aklouk – IM Coordinator

im1.palestine@sheltercluster.org

Haneen Al Tali – IMO Gaza

im2.palestine@sheltercluster.org

Oscar Gobbato – IM Specialist Amman/ Jerusalem

ims.palestine@sheltercluster.org

Jehan Salim – Incoming Technical Coordinator

techco.palestine@sheltercluster.org

Sneha Malani – Shelter Cluster Technical Advisor

Sneha.Malani@crs.org

▼ COORDINATION TEAM



Fadi Shamisti
Coordinator West Bank
NRC
+972 (0)54 666 3902
coord1.palestine@sheltercluster.org



Iyad Abu Hammam
Cluster Coordinator, Gaza
NRC
+972 (0)59 707 7233
coord.gaza@sheltercluster.org



Mohammed T. Al Aklouk
Cluster Information Management
Coordinator Palestine
NRC
+972 (0)595911995
+972 (0)562562445
im1.palestine@sheltercluster.org



Jeroen Quanjer
National Coordinator Shelter Cluster
Palestine
NRC
+962791223485
+972542776886
natco.palestine@sheltercluster.org



Maher Alabed
Shelter Cluster Sub National Coordinator-
Gaza
NRC
+972 (56) 2562663
coord2.palestine@sheltercluster.org



Sneha Malani
Shelter Cluster Technical Advisor
CRS
Sneha.Malani@crs.org



Jehan Salim
Shelter Cluster Technical Coordinator
Palestine
NRC
techco.palestine@sheltercluster.org



Haneen Al TALI
Information Management Officer
Palestine
NRC
im2.palestine@sheltercluster.org



Oscar Gobbato
IM Specialist Shelter Cluster Palestine
NORCAP
+962 79-1223-535

Website - <https://sheltercluster.org/response/palestine>
Email Registration - [Shelter Cluster Mailing List Registry](#)

AGENDA

- National Update
- Gaza update
 - Humanity & Inclusion (HI): Atlas Logistique; Storage and transport support for humanitarian actors
 - Rebuilding Alliance: Gaza Baytna model
- West Bank update
- Information Management Update
- Technical Coordination
- Open discussion
- AOB

CONTEXTUAL / NATIONAL UPDATE

Gaza:

- Restrictions/ limited supplies continue to delay emergency response and continue to hinder relief efforts. 64 per cent of the population in the Gaza Strip lacking shelter materials and NFIs. People shelter in severely damaged and unsafe buildings.
- Area based approach, local coping mechanisms, HLP and damage assessments.
 - E.g. see [IEC on geodesic tents](#); [Shelter Cluster HLP Ceasefire Press Release](#)
- **Civil-Military Coordination Center (CMCC)**: The structure is still fluid and fast-moving. Their main “lines of effort” include Humanitarian assistance (our entry point). Unblock stuck pipelines, dual use items priority for approval, etc.

West Bank:

- Escalating settler violence continues across the West Bank.
- UNOSAT conducted a comprehensive building and infrastructure damage assessment
- TWIG setup, scenario planning, and response modalities (mainly cash modalities and market based)

National:

- Flash appeal submitted, including figure for enabling environment.



PALESTINE
SHELTER CLUSTER

Coordinating Humanitarian Shelter and Settlements

GAZA UPDATE

Overview of the situation in Gaza

- **Shelter needs remain largely unmet**, especially in northern Gaza, where many people are staying in severely damaged buildings at risk of collapse.
- **Millions of shelter and non-food items are blocked** in Jordan, Egypt, and Israel awaiting approvals, while nearly 1.5 million people remain in urgent need of emergency shelter assistance and the window to scale up winterization support is closing rapidly.
- **Rejections:** Since the ceasefire took effect on 10 October, Israeli authorities have rejected **23 requests** from **nine aid agencies** to bring in nearly 4,000 pallets of urgently needed tents, sealing and framing kits, bedding, kitchen sets and blankets. In 21 of the 23 cases, the rejections were on the basis that the organisations submitting them were “**not authorised to deliver humanitarian aid to Gaza**”

Overview of the situation in Gaza

Movement of People

- People in the Gaza Strip continue to gradually return to their communities, wherever access is allowed. Since 10 October, more than **700,000** movements of people were recorded by Site Management Cluster (SMC) partners, including nearly **576,000** movements crossing from southern to northern Gaza, primarily through Al Rashid Road, and **113,260** movements of people were recorded from western to eastern Khan Younis during the same period.
- **Reverse movements** to southern Gaza continue to be recorded, **reportedly due to the lack of essential services** in the north and the east. A rapid intentions survey conducted by ACTED across ACTED-managed IDP sites in southern Gaza (mainly Khan Younis and Rafah) showed that **93% (651 HHs)** remain in current sites due to lack of alternative shelter, proximity to family, restricted access to areas of origin, and limited livelihood options, while **7% (52 HHs) have moved**—mostly returning to areas where basic services and habitable homes are available.

Overview of the situation in Gaza

- In northern Gaza, based on field observations, the Shelter Cluster estimates that many people are taking shelter in severely damaged and unsafe buildings.
- The Palestinian Civil Defence (PCD) issued a general warning against sheltering in buildings that had been bombed. PCD highlighted that many buildings are at risk of collapse, especially given the imminent onset of winter rains that heighten the risk of soil erosion and further damage to already unstable structures.
- SC team is involved in several coordination meetings and discussions related to winterization plans and solutions to people at risk of flooding.
- On the 2nd of November, the SMC reported Evolving Priority Needs at 38 surveyed IDP sites hosting 180,000 displaced population:
 - 45% prioritize household items; 38% require personal items, including winter clothing; 37% identify food as their primary need.
 - This shift suggests a positive trend, likely reflecting the increased response efforts from both the Shelter and Food Security Clusters.

Update on Shelter Materials Entry to Gaza



Materials Entered Since 11 October:

Shelter partners received: 8.05K Tents, 182.9 K tarps, and 92.05 K bedding items, and **distributed**: 4.08 K tents, 27.49K tarps, and 48.71 K bedding items

Committees received: 26.84K tents, 22 K tarps, and 33K bedding items, and **distributed** 2.34K tents, 22K tarps, and 33K bedding items.

The Shelter Cluster's approach is based on three factors:

- flow of materials,
- type of materials available, and
- population movement.

Since the approval of material entry and given limited quantities—particularly tents—the Cluster has prioritized recently displaced households without shelter and protection referral cases.

With increasing inflow of tarpaulins and expectations for hundreds of thousands more, the approach will evolve toward broader coverage, including blanket distributions where feasible.

Update on Shelter Materials Entry to Gaza

Log Cluster: Overview of cargo status and need for cargo prioritization :

- **Access and entry constraints:** Cargo entry remains limited by dual-use restrictions and dependence on a single crossing point, Kerem Shalom (KS). The cluster continues to advocate for the opening of additional crossings, including Zikim and Erez, to expand entry capacity and improve flow.
- **Storage and absorption limitations:** Warehouse capacity remains the main bottleneck, restricting the amount of cargo that can be received and dispatched. Despite sufficient transportation capacity, low absorption and limited storage slow down overall operations.
- **Operational coordination:** Partners are encouraged to distribute cargo within two days of arrival to ensure regular turnover and maintain operational flow.
- **Ongoing measures:** The Log cluster is focusing on improving absorption, expanding storage space, continuing to engage partners and adjust plans to expedite cargo movement as opportunities arise.

Programmatic Area-Based Approach



- As the flow of tarpaulins is progressing relatively well, and as agreed in the previous meeting to adopt an area-based approach, the Shelter Cluster is now mapping the sites that partners manage, assess, and assist. This aims to avoid duplication, increase coverage in the coming period, and serve as a foundation for the response in the long run.
- Partners are sharing site lists with the Cluster for de-duplication. A site mapping is underway to enable an area-based approach aligned with growing material availability and operational capacity.
- SC has consolidated the partners' input to identify operational zones for each partner or group of partners, and to allow for expanding operations to new areas within the identified zones to include hard-to-reach areas and areas where no or limited presence of shelter partners.

GENERAL UPDATES

- During the last week's Gaza Shelter Cluster meeting, partners discussed and agreed to standardize the number of tarpaulins distributed:
 - 3 tarpaulins for blanket distributions.
 - 4–5 tarpaulins for households that have been assessed and verified as in need.
- The Shelter Cluster emphasizes the importance of regular reporting through the [Rapid Reporting Tool](#) to enable monitoring of material entry, distributions, and activities on a daily basis. There is high pressure on the Cluster to demonstrate delivery, and the timely reporting will also strengthen advocacy efforts by providing reliable data.
- Partners are strongly advised to be ready, conduct assessments, and identify their target areas to accelerate distributions before winter and given the limited warehouse capacity. The Logistics Cluster can only support storage for up to four days in their warehouses.



PALESTINE
SHELTER CLUSTER

Coordinating Humanitarian Shelter and Settlements

WB UPDATE

Recent Damage Assessment of Tulkarem, Nur Shams and Jenin Refugee Camps

UNOSAT Satellite-Based Damage Assessment:

UNOSAT acquired satellite imagery collected on **16 October 2025, 21 May 2025, 12 March 2025, 21 October 2023, and 17 June 2023**. These images were analyzed and compared to detect changes within the designated areas of interest.

UNOSAT conducted a **comprehensive building and infrastructure damage assessment** based on satellite imagery within the perimeters of the refugee camps.

Cluster Assumptions for Housing Units damage Analysis:

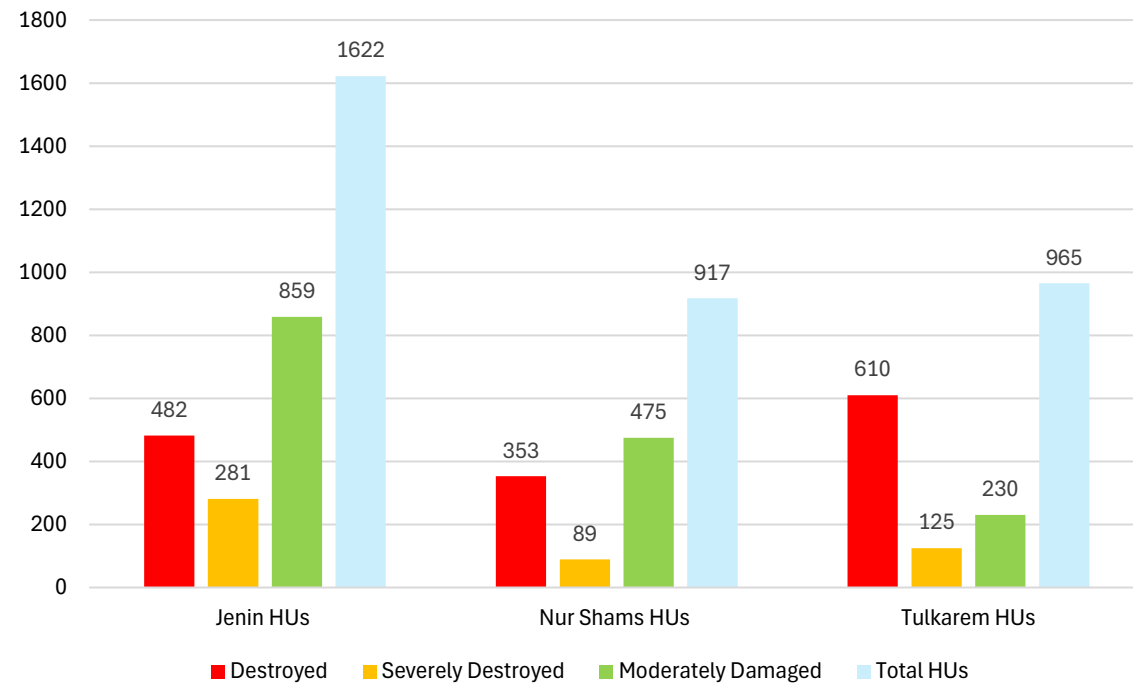
1. Approximately **80%** of the destroyed and damaged structures are residential buildings.
2. Each residential building contains, on average **three housing units (HUs)**.
3. The analysis represents preliminary findings and **has not yet been validated through field verification.**
4. Damage Assessment is based on UNOSAT satellite imagery analysis.

Damage Assessment of Tulkarem, Nur Shams and Jenin Refugee Camps

Damage Category	Total HUs
Destroyed	1445
Severely Destroyed	494
Moderately Damaged	1565
Total HUs	3504
HUs for around	20,000 IDPs

A total of **1,939** housing units were either **totally destroyed or severely damaged**, resulting in an estimated **10,700 IDPs** who will **have no habitable homes to return to**.

Housing Damage by Camp



WB UPDATES

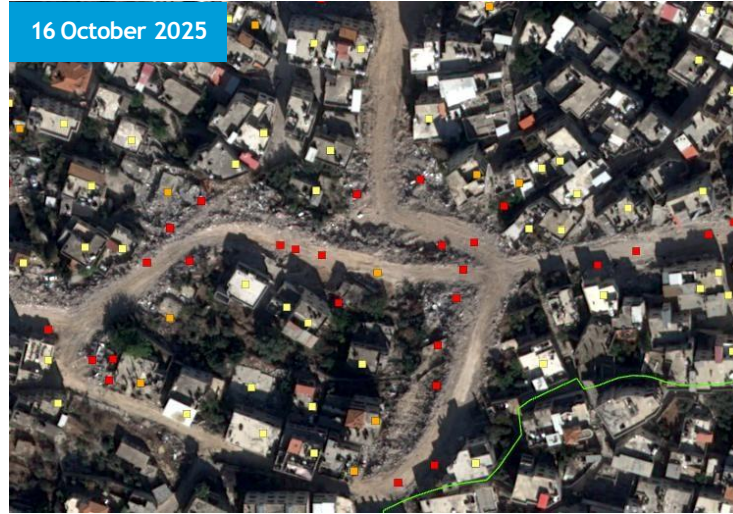
Damage assessment Jenin Camp

- 201 destroyed structures
 - 117 severely damaged structures
 - 358 moderately damaged structures
 - **Total: 676** damaged structures
- These damaged structures represent **around 52%** of the total structures in Jenin Camp.



WB UPDATES

Changes observed Jenin Camp

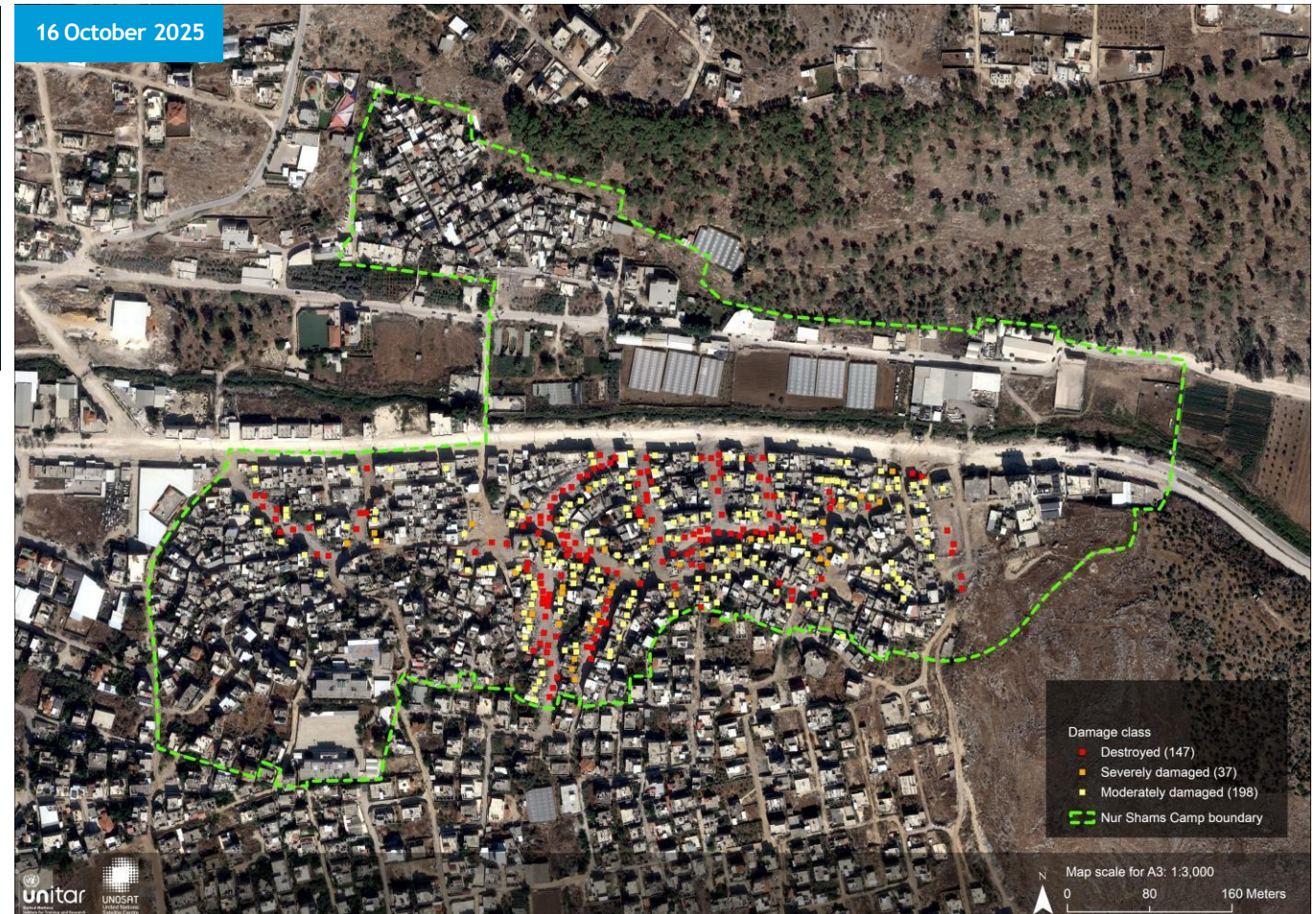


WB UPDATES

Damage assessment Nur Shams Camp

- **147** destroyed structures
- **37** severely damaged structures
- **198** moderately damaged structures
- **Total: 382** damaged structures

These damaged structures represent **around 48%** of the total structures in Nur Shams Camp.

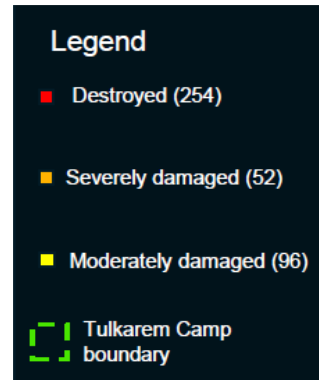


WB UPDATES

Damage assessment Tulkarem Camp

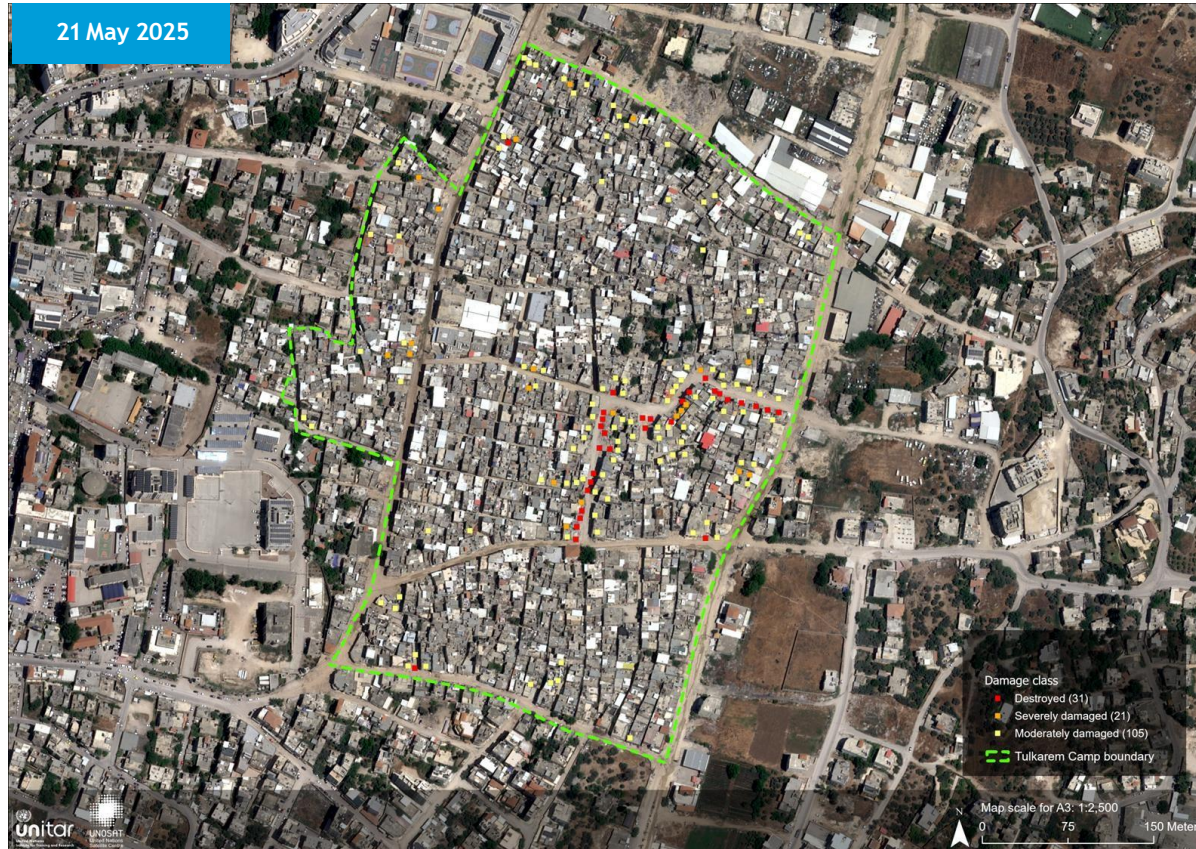
- 254 destroyed structures
- 52 severely damaged structures
- 96 moderately damaged structures
- **Total: 402** damaged structures

These damaged structures represent **around 36%** of the **1,105** total structures in Tulkarem Camp.



WB UPDATES

Changes observed in Tulkarem Camp





PALESTINE
SHELTER CLUSTER

Coordinating Humanitarian Shelter and Settlements

IM UPDATE (Gaza)

Daily Gaza Tents Entry and Distributed - Sep - Nov 2025

Date

All

Organization

All

Is Committees

No

Yes

Press CTRL for multiple selection



TENT

50.43K

Tents Entered To Gaza Strip



TENT

13.95K

Tents Distributed



TENT

7.60K

Tents Intercepted



TARPAULIN

221.06K

Tarps Entered to Gaza Strip



TARPAULIN

57.48K

Tarps Distributed



198.94K

Bedding items Entered




124.43K

Bedding items Distributed

Daily Gaza Tents Entry and Distributed - Sep - Nov 2025

Date
All 

Organization
All 

Is Committees
 No
 Yes

Press CTRL for multiple selection



TENT

19.65K

Tents Entered To Gaza Strip



TENT

7.68K

Tents Distributed



TENT

7.60K

Tents Intercepted



TARPAULIN

195.59K

Tarps Entered to Gaza Strip



TARPAULIN

32.59K

Tarps Distributed



117.78K

Bedding items Entered



48.71K

Bedding items Distributed

IM UPDATES

Shelter cluster Public Dashboard

5W - GAZA EMERGENCY SHELTER AND NFI CLUSTER

Latest update on 07/Nov/2025

1.9M
Displaced People

1.7M
2.8M
People reached with shelter assistance
People reached with provision of NFIs

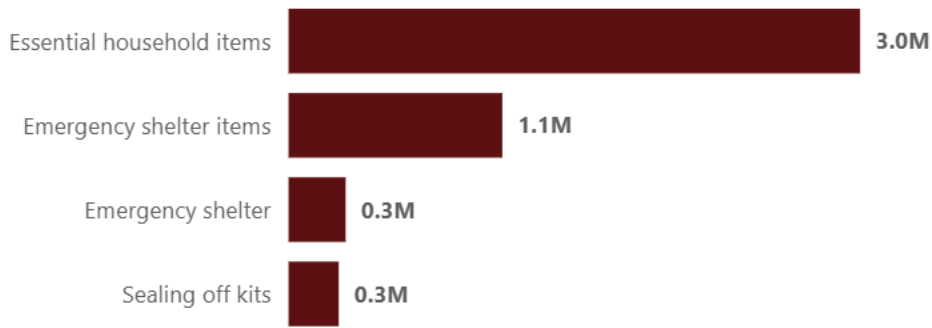
30
Number of partners

Location: All

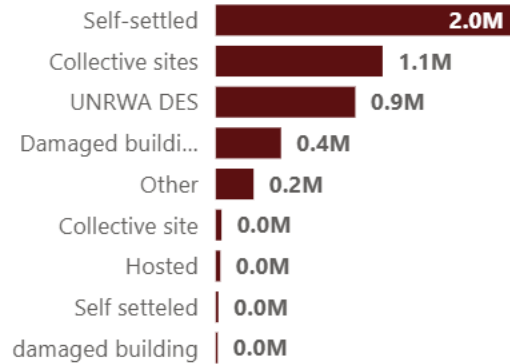
Implementation date: 2025

Organization: All

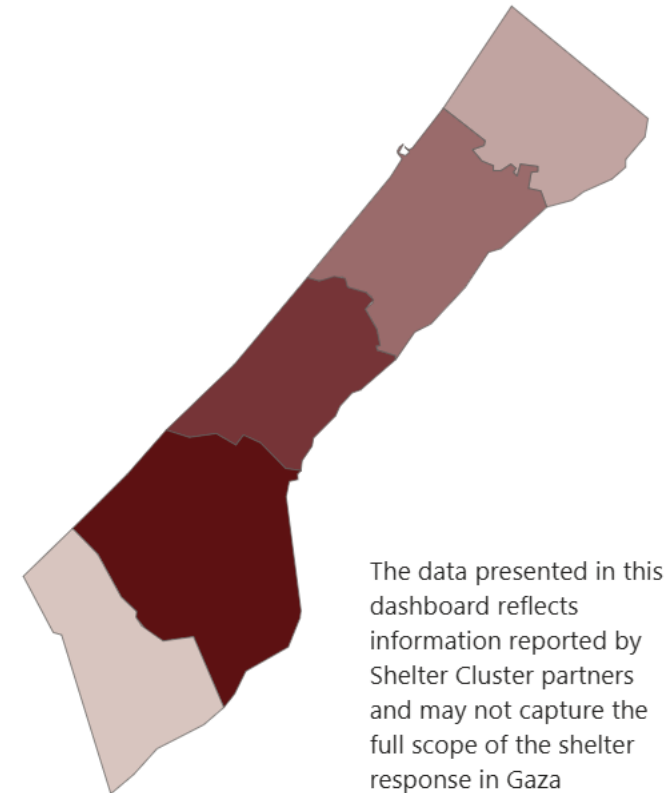
Individuals supported by activity



Individuals supported, by shelter

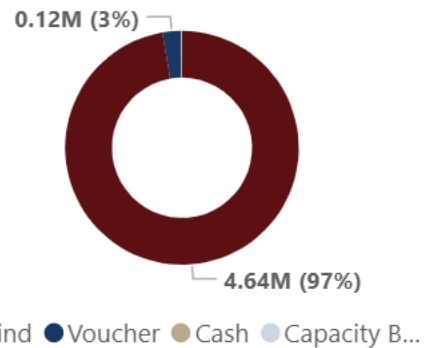


Response by governorate

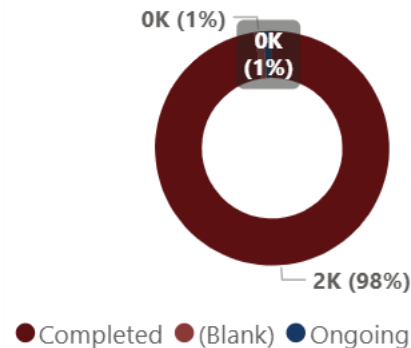


The data presented in this dashboard reflects information reported by Shelter Cluster partners and may not capture the full scope of the shelter response in Gaza

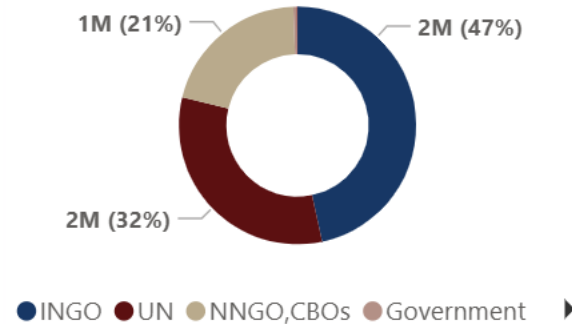
Activity modalities in the response



Activities completion status



Individuals supported, by organization



PIPELINE OVERVIEW - GAZA EMERGENCY SHELTER AND NFI CLUSTER



2M

Shelter items in the pipeline



5.0M

NFIs in the pipeline

Border country

All

Type of items

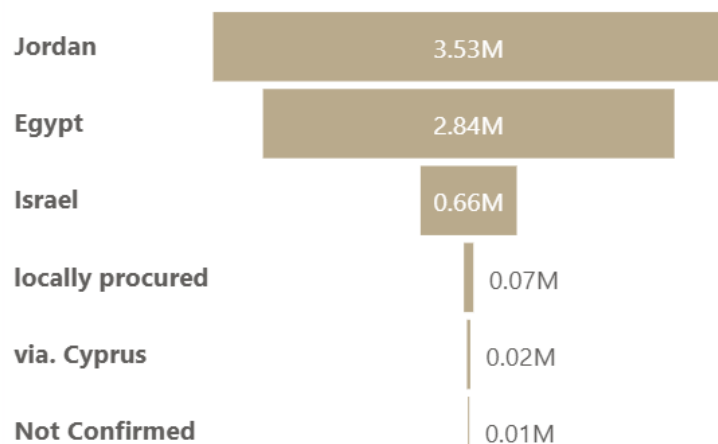
All

Organization

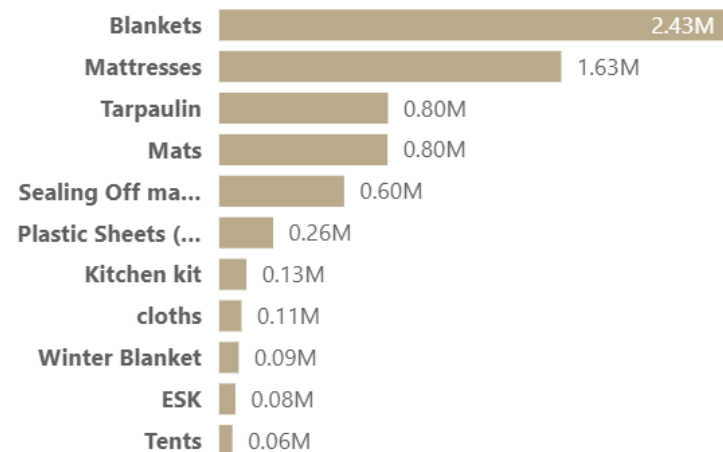
All

Items	Border country	Quantity of items
Multipurpose Tent	Jordan	50
ESK	Egypt	100
General purpose toolkits	Jordan	200
Sleeping Bags	Egypt	600
Bedding set	Israel	1,130
Kitchen kit	Israel	1,285
Kitchen kit	Egypt	1,400
Tents	locally procured	1,500
General purpose toolkits	Egypt	1,665
Framing kits	Jordan	2,140
Tents	Israel	2,364
Sealing Off materials	locally procured	2,554
Blankets	locally procured	3,000
Bedding set	Jordan	4,148
Pillows	Egypt	4,920
Framing kits	Egypt	4,960
Tents	Egypt	7,364
Total		7,125,366

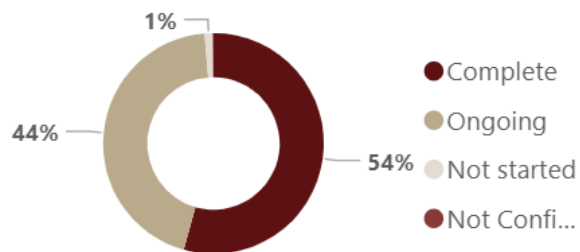
Items procured, by border



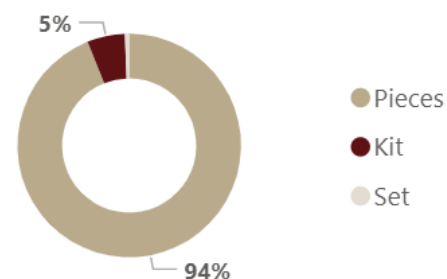
Total quantity of items under procurement/procured, by type



Item procurement status




Procured items by unit type



18

Number of organizations with items in the pipeline

PIPELINE OVERVIEW - GAZA EMERGENCY SHELTER AND NFI CLUSTER


2M
 Shelter items in the pipeline


5.0M
 NFIs in the pipeline

Corridor

All

Expected Border

All

Type of items

All

Procurement Status

All



63.4K
Sum of Tents



803.6K
Sum of Tarps

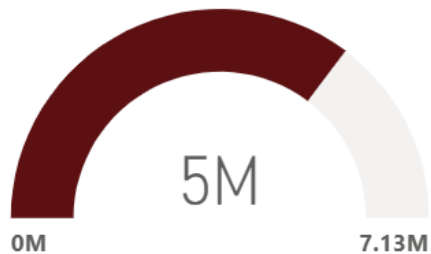


5.0M
Sum of Bedding Items

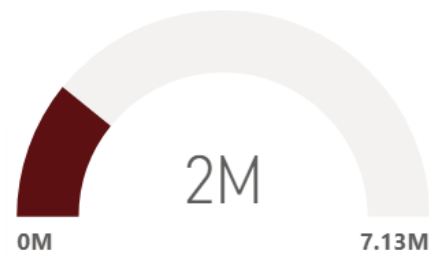


29.2K
Sum of Solar Lights

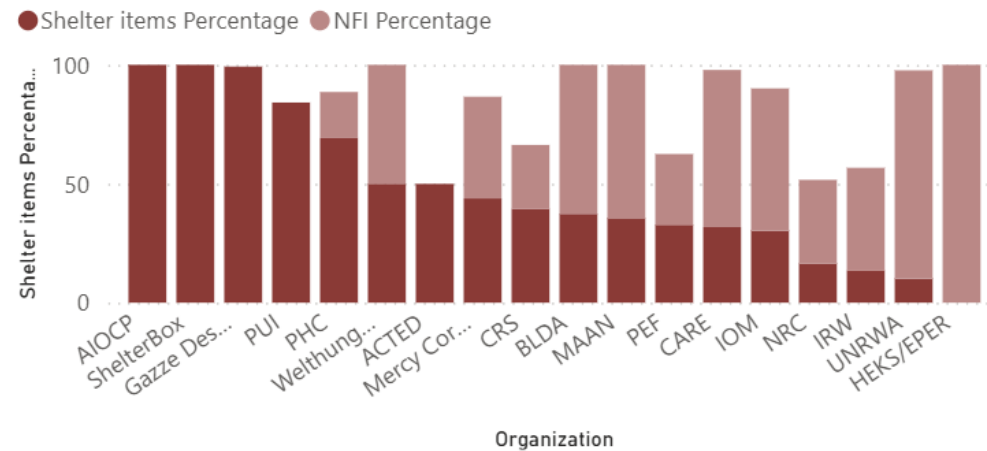
NFI Material Items per total



Shelter Items per total



Shelter items Percentage and NFI Percentage by Organization



- Organization
- ACTED
 - AIOCP
 - BLDA
 - CARE
 - CRS
 - Gazze Destek Organiza..
 - HEKS/EPER
 - IOM
 - IRW
 - MAAN
 - Mercy Corps
 - NRC
 - PEF
 - PHC
 - PUI
 - ShelterBox
 - UNRWA

3986

Sum of Pallets

1.7K

Sum of Tonnes

28

Count of Items

9

Count of Consignee

Shelter Rejections Through UN2720 since Ceasefire

IM UPDATES (Gap Analysis Result as of 4th of Nov)

Based on the number of people reached over the past six months and the number of people newly displaced during the same period, a thorough analysis—taking all relevant factors into account—indicates that a significant number of people still urgently require shelter assistance.

Emergency Shelter Items



TENT



TARPAULIN



PLASTIC SHEET

1.35 M



PEOPLE IN NEED

Household Items



MATTRESS



BLANKET



CLOTHING

1.37 M



PEOPLE IN NEED

Mapping Partner Presence and Activities to Enhance Coordination and Prevent Duplication

Shelter Cluster Distribution Points

Governorate

All

Partner

Multiple selections

Status

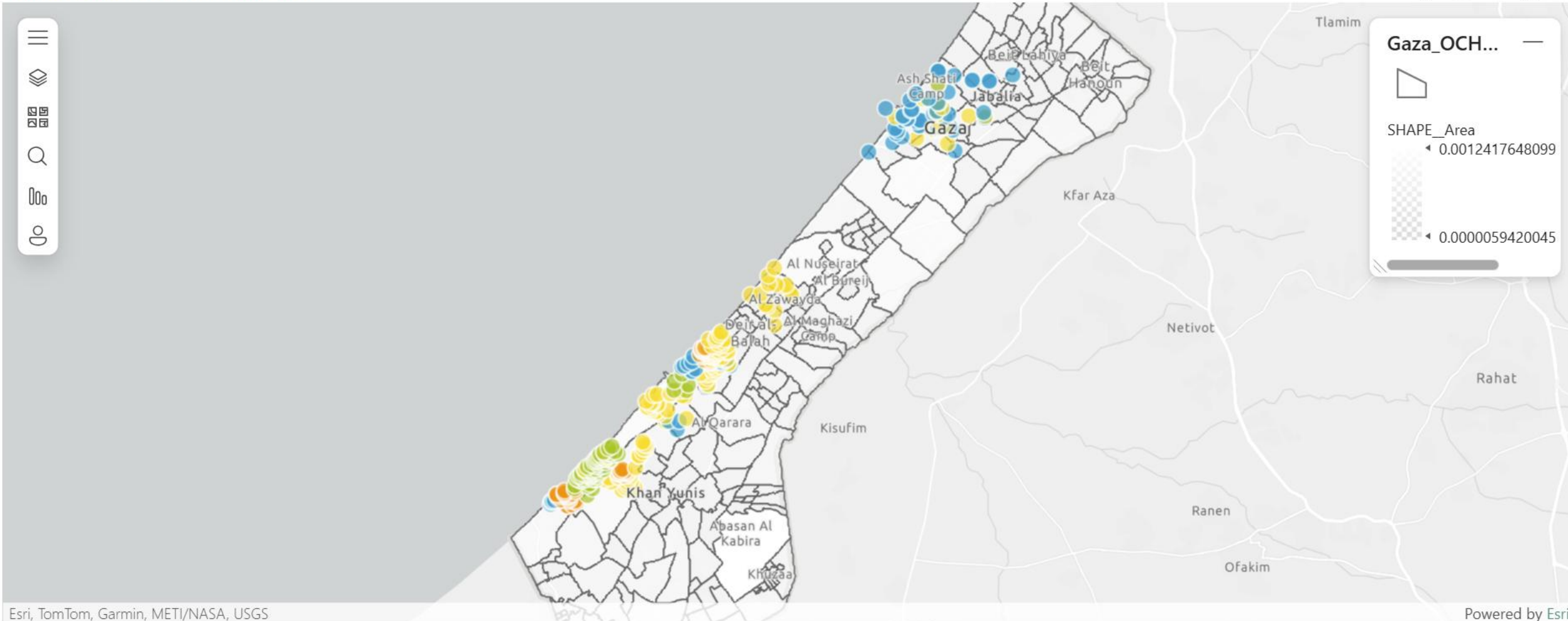
All

Type of facility

All

Press CTRL for multiple selection

Shelter Cluster Distribution Points



Shelter Cluster Distribution Points

Governorate:
 Partner:
 Duplicate Flag:
 Type of facility:
 Duplicate With Pa...:

Press CTRL for multiple selection



Acronym	Lattitude	Longitude	Name	Address	Governorat	Neighbourh	Duplicate Flag	Duplicate With Partner	Type of facility
							Duplicate		
ACTED	31.35211	34.26216	Al-Wehda		Khan Younis	Khan Younis	Duplicate	NRC	Provision of Tents
ACTED	31.35248	34.26266	Al-Kareem		Khan Younis	Khan Younis	Duplicate	NRC	Provision of Tents
ACTED	31.35266	34.25708	Al-tahrir		Khan Younis	Khan Younis	Duplicate	CARE	Provision of Tents
ACTED	31.35326	34.26224	Al-Amal and Al-Haya		Deir Al Balah	Deir Al Balah	Duplicate		Provision of Tents
ACTED	31.35326	34.26224	Al-Amal and Al-Haya		Khan Younis	Khan Younis	Duplicate		Provision of Tents
ACTED	31.36008	34.26507	al Quods		Khan Younis	Mawasi	Duplicate		Provision of Tents
ACTED	31.36253	34.26759	Hayat Site		Khan Younis	Mawasi	Duplicate	PARC	Provision of Tents
ACTED	31.36364	34.26952	al Quods		Khan Younis	Mawasi	Duplicate		Provision of Tents
CARE	31.34852	34.27008	Al-Salam		Khanyounis	Mawasi Khan Younis	Duplicate	NRC	NFI
CARE	31.35269	34.25435	Shams		Khanyounis	Mawasi Khan Younis	Duplicate	NRC	NFI
CARE	31.35276	34.25783	Al-tahrir		Khanyounis	Mawasi Khan Younis	Duplicate	ACTED	NFI
CARE	31.36170	34.26605	Al-Nakheel		Khanyounis	Mawasi Khan Younis	Duplicate		NFI
CARE	31.36170	34.26605	Golden Sand		Khanyounis	Mawasi Khan Younis	Duplicate		NFI

673

Count of Selecte...

28

Count of Duplic...

646

Count of Unique



PALESTINE
SHELTER CLUSTER

Coordinating Humanitarian Shelter and Settlements

Technical Update

Technical Updates: Gaza


- Winterization IEC is ready and being translated to Arabic.
- Two new Sub-TWGs being initiated:
 - a) Cash and market monitoring for shelter;
 - b) Damage assessments.TORs will be shared at the TSA TWG on Thursday and TWGs will kick off next week onwards.
- Market monitoring template being prepared for regular monitoring shelter materials availability and prices in Gaza (in coordination with CWG).
- Ad-hoc meeting held on how to safely assess damaged buildings, including Mine Action and Debris Management TWG. Approach and recommendations shared with TWG members and will further be detailed under the Damage Assessment Sub-TWG.


Sealing off damaged buildings

SOK consists of plastic sheeting, 2 tarpaulins, duct tape, rope and IEC materials

- 1) Determining safety to assess the building in coordination with Mine Action.
- 2) Technical Assessment (includes assessing vulnerability based on SC criteria). Note: blanket assistance depending on material entry.
- 3) Distribution of SOKs and ESKs, complemented with distribution of technical messaging and awareness raising IEC materials.
- 4) To complement SOK distributions with essential household items.

WINDOWS

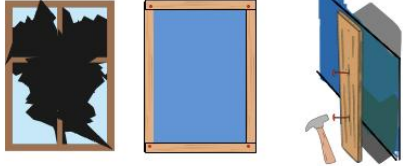
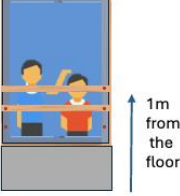
 **Wear gloves & Carefully remove shattered glass**

 **Keep children away from insecure windows.**

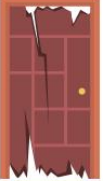

Cover the openings

Secure tarpaulin
Use timber & nails or ropes to tightly cover the opening.



Add barrier
Instal a railing to prevent accidents

Reuse old windows & doors
Adjust them to fit the size of the openings

1m from the floor

BEFORE REPAIRS  **AFTER REPAIRS** 

Note: This tool offers basic guidance only and is not a substitute for expert structural assessment.



Source: Heks Eper and IOM.

Guidance on Safely Assessing Damaged Buildings

- Technical shelter staff to assess damaged buildings only after having undergone an Explosive Ordnance Risk Education (EORE) training. Mine Action provides such trainings, request form link [HERE](#).
SC recommends agencies contact Mine Action for their shelter technical staff to undergo EORE training.
- Coordinate with UNMAS on EHA (explosive hazard assessment), based on risk-level, proceed to carry out technical assessments. Assessments can only be carried out for low and medium risk buildings. EHA Request form link available [HERE](#).
- Assessments to be carried out only after structural screening by engineers that a building is safe to enter.
- Provide shelter assistance based on needs assessments as far as possible. Complement assistance with IEC materials.



PALESTINE
SHELTER CLUSTER

Coordinating Humanitarian Shelter and Settlements

Discussion / Q&A / AOB

- **Upcoming meetings:**

- National SAG: November 20th
- Gaza Shelter Cluster meeting: 12:00 PM, Sunday November 16th
- Gaza SAG meeting: 2:00 PM, November 20th
- WB Shelter Cluster meeting: 10:00AM, Tuesday November 25th
- WB SAG meeting: 10:00AM, 2nd December.
- Gaza TSA TWG for market monitoring and damage assessment: 12- 1 pm (Gaza time), 13th November
- **Next National Shelter Cluster meeting: 1PM, November 26th**
 - Partner presentation?