



PALESTINE  
**SHELTER CLUSTER**

Coordinating Humanitarian Shelter and Settlements

---

# **NATIONAL SHELTER CLUSTER MEETING**

---

13 November 2024

# AGENDA

---

- Introductions
- General Update
- Gaza Updates
- WB Updates
- IM Update
- Technical Update
- AOB

# INTRODUCTIONS

---

Jeroen Quanjer – National Cluster Coordinator

[natco.palestine@sheltercluster.org](mailto:natco.palestine@sheltercluster.org)

Alison Ely – Sub-National Coordinator Gaza

[coord2.palestine@sheltercluster.org](mailto:coord2.palestine@sheltercluster.org)

Fadi Shamisti – Sub-National West Bank Coordinator

[coord1.palestine@sheltercluster.org](mailto:coord1.palestine@sheltercluster.org)

Iyad Abu Hammam – Gaza Coordinator

[coord.gaza@sheltercluster.org](mailto:coord.gaza@sheltercluster.org)

Mohammad Aklouk – IMO

[im1.palestine@sheltercluster.org](mailto:im1.palestine@sheltercluster.org)

Leandro Fernandez-Jardon – Technical Coordinator

[techco.palestine@sheltercluster.org](mailto:techco.palestine@sheltercluster.org)

Sneha

# NEXT MEETINGS

---

National Shelter Cluster Meeting (Online)

Wednesday 27th November, 10:30 – 12:00

West Bank Shelter Cluster Meeting (Online)

Wednesday 04 th December, 10:00 – 11:30

Gaza Shelter Cluster meeting (In person)

Sunday 17th November, 10:30 – 12:00, JHC JHOC KY

# Key highlights

---

- West Bank
  - Clashes between Palestinians and Israeli settlers continue
  - Resulting in displacements and minor and larger scale damage to homes, properties and olive yards
  - Winterisation and protection concerns.
- Gaza: Rising Demand for Emergency Shelters/Tents
  - Requests for tents continue to be the predominant theme among assistance requests.
  - Concerns over increased tension among family members, due to limited space and harsh conditions.
  - Social, health and psychological impacts of overcrowded and inadequate living arrangements (<30m<sup>2</sup> pp for site management inside the humanitarian zone).
  - Thousands of people who are repeatedly displaced, surviving amid rubble and sheltering in unsafe locations, including damaged and destroyed buildings.
  - Critical winterization, with wet and cold weather.

# GENERAL UPDATE

---

- Flash Appeal Summary
  - Requested to give two figures – capacity of cluster partners vs reality
  - 632m USD vs 249m USD
  - Gaza 614m USD vs 227m USD
  - West Bank 22m USD
  - Gaza Response: Emergency NFIs
    - Climatisation assistance
    - Sheltering Materials
    - Assessments
    - Interim shelter support
    - Advocacy
- West Bank:
  - Demolition response – SNFIs, cash
  - Cash for Repair
  - Protective measures for shelters
  - Upgrading substandard shelter
  - Stockpiling Shelter NFIs

# GENERAL UPDATE

---

- Energy demand assessment
  - Discussion at the NICCG about how to ensure responsibility is taken for Energy
  - Operations vs Response
  - SAFE WG

# GAZA UPDATES

---

- Since Cluster document stating we needed 25 trucks a week of SOKs for 8 week, we have had 11 a week.
- Fence Road – 21 trucks out of 45 prioritized were for shelter for this week

Total	Offloaded	Delivered	Prioritized	Lined up	Rejected	No Show
168	62	3	47	46	9	1

- The logs cluster is requesting to ensure that all items have preclearance from COGAT before sending it for prioritization.
- Still prioritizing SOKs, tents then Bedding sets and winter clothes kits.
- Flour Sacks – no sacks available at the moment
- Until now, the majority of the requests to enter wooden framing kits were denied by COGAT. Partners are requested to share the information of the denied requests with the cluster. Only will be collected and consolidated for advocacy purposes.

# GAZA UPDATES

---

- New COGAT update:
- **Items that can be coordinated without the need for pre-approval:**
  - 1. Large/communal tents
  - 2. Sleeping bags
  - 3. Portable/temporary toilets
  - 4. Heating pads
  - 5. Vaccines
- **Items that require pre-approval for coordination:**
  - 1. Tent leveling platforms
  - 2. Working tools and tent kits
  - 3. Nutrition supplements for animals
  - 4. Desalination devices
  - 5. Ovens
  - 6. Mobile/immobile storage units
  - 7. Veterinary equipment
  - 8. Consumables for maintenance of water/sewer devices, systems, sewage pumps, and systems related to rainwater collection and storage (hypochlorite, chloride tablets, whitewash, filters for desalination units)
  - 9. Personal protective gear, water-resistant clothing (raincoat, boots, goggles), and equipment for shelter construction teams (whistle, megaphone, personal solar lamps)

# GAZA UPDATES

---

- Northern Gaza (realistically Gaza City) – fuel needs? Operations?
- Energy
  - We shared the KOBO for the humanitarian energy survey – please do complete it. There can be more than one response per agency
  - Enumerator training for IDP survey this week and starting to sample 17th onwards
- Sealing off damaged buildings – meeting held with partners who are doing this last week – guidance document will be produced, in line with TWG work done. If you are doing this please let us know for coordination of areas and standards.

# GAZA UPDATES

---

- Requests:
  - If any partner has lots of the BLUE Geodesic type tent – please can you reach out to Leandro. There might be some winterisation kits available for these tents
  - There are around 3500 tents available for partners in Gaza City – please reach out to Alison or Iyad if you are interested
  - Looting – please also complete the [Loss Report KOBO](#) so we can have an update on what partners are losing – we've had two responses since August and we know there is more looting
  - Please keep the cluster updated on rejections from COGAT
  - Please ensure your Gaza teams complete the [Energy survey](#)

# WB UPDATES

---

## Technical Coordination Meeting on Damage Repair and Displacement Support

The Cluster, UNRWA, and selected members are holding a technical coordination meeting focused on aligning responses for damage repair and support for displaced families. Key discussion points include:

- Establishing definitions for damage categories and setting response ceilings.
- Reviewing and determining rental support amounts for displaced families.
- Revising the displacement criteria to identify eligible cases for rental support.
- Sharing and refining available tools to create a reference for all partners.

## Partner Engagement and Needs Assessment

The Cluster team discussed strategies for engaging partners in needs assessment, identifying technical requirements, and addressing gaps, with a particular focus on shelter and power needs.



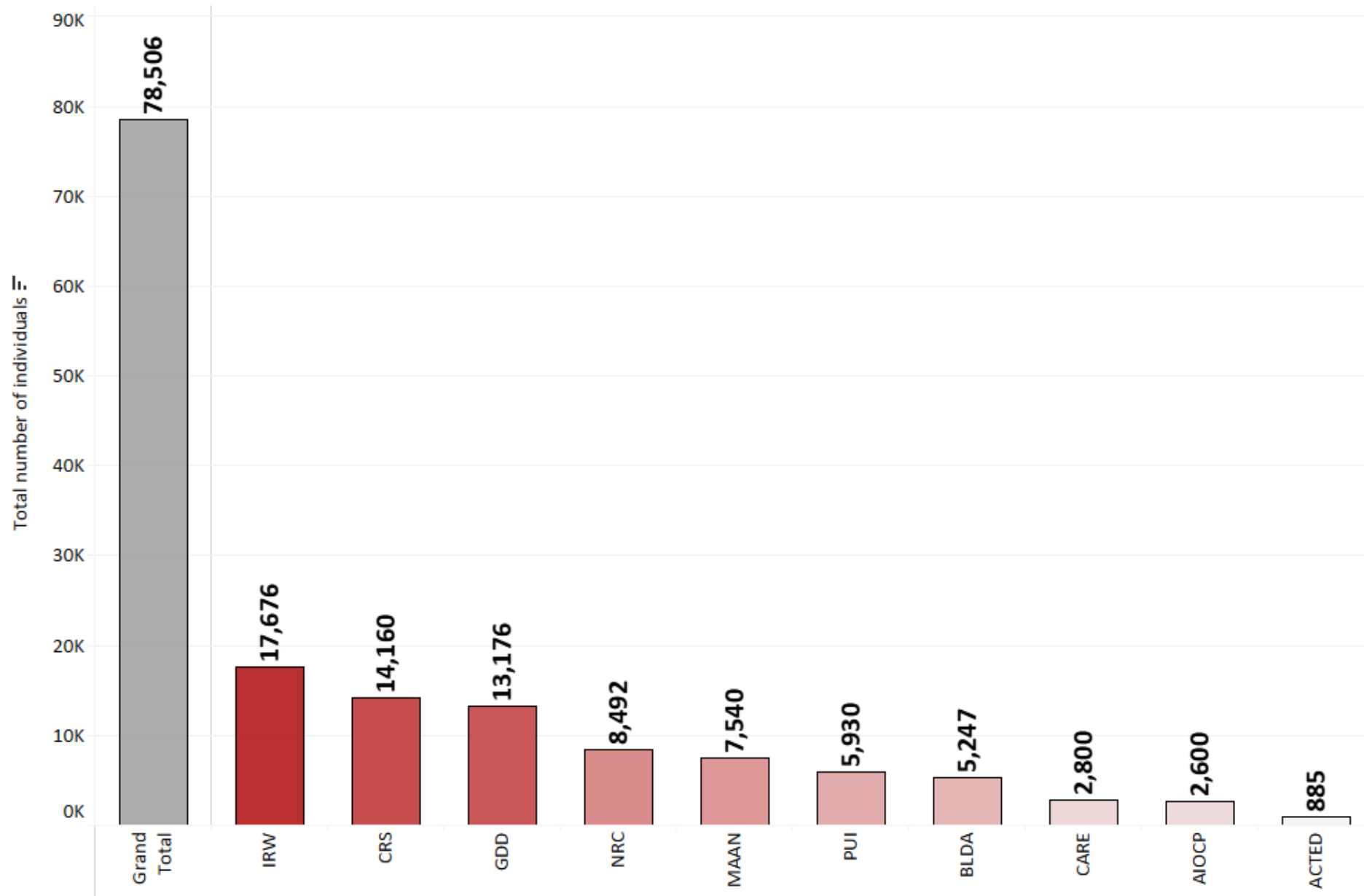
PALESTINE  
**SHELTER CLUSTER**

Coordinating Humanitarian Shelter and Settlements

# IM UPDATE

# IM Updates- 5Ws Analysis (Oct)2024

## Organization Name and Number of Individuals Assisted



# IM Updates- 5Ws Analysis (Oct)2024

## Governorates, Items, and Number of Individuals Assisted in OCT 2024

Activity (group)	Gaza	Middle Area	Khan Yunis	Grand Total
Provision of Bedding set	5,260	8,312	521	14,093
Provision of Clothes	38,282			38,282
Provision of Kitchen Set	780			780
Provision of Sealing Off materials	6,462	4,638	7,540	18,640
Provision of Tents(meets SC standards)	5,558	1,153		6,711
Grand Total	56,342	14,103	8,061	78,506

# IM Updates- Stock Analysis 2024

## Stock availability in which Governorates

	Middle Area	Gaza	North Gaza	Khan Yunis	Grand Total
Blankets	9,950	2,960	383		13,293
Sealing Off materials	6,600	2,419	2,754	1,100	12,873
Cloths	1,215	5,643			6,858
Searchlight	3,300				3,300
Tents	335	1,560		325	2,220
Kitchen kit		370			370
Mattresses		15	123		138

# IM Updates- Pipeline Analysis 2024

## Items in Pipeline and Proposed Border of Entry

Items (group)	Egypt	Israel	Jordan	Not selecte.. via. Cyprus	Grand Total	
<b>Blankets</b>	15,920		633,418	900,000	1,549,338	
<b>Mattresses</b>	80,371		51,450	900,000	1,031,821	
<b>Sealing Off materials</b>	67,930	3,096	53,480	535,500	660,006	
<b>Kitchen kit</b>	3,618		4,000	100,000	107,618	
<b>Tents</b>	47,024	1,000	9,420	40,100	5,400	102,944
<b>Mats</b>	41,751		7,150		48,901	

# Recent Updated Damage Figures after 400 Day of War:

Source :GMO    Update date:09 Nov 2024



**159k(HU)= 34%** of the housing stock in Gaza is totally destroyed (housing units)

**83k (HU)= 18%** of the housing stock in Gaza is severely damaged (housing unit)

**193k(HU)= 41%** of the housing stock in Gaza is partially damaged (housing unit)

**435k(HU)= 93%** of housing units in Gaza have been sustained some type of damage.

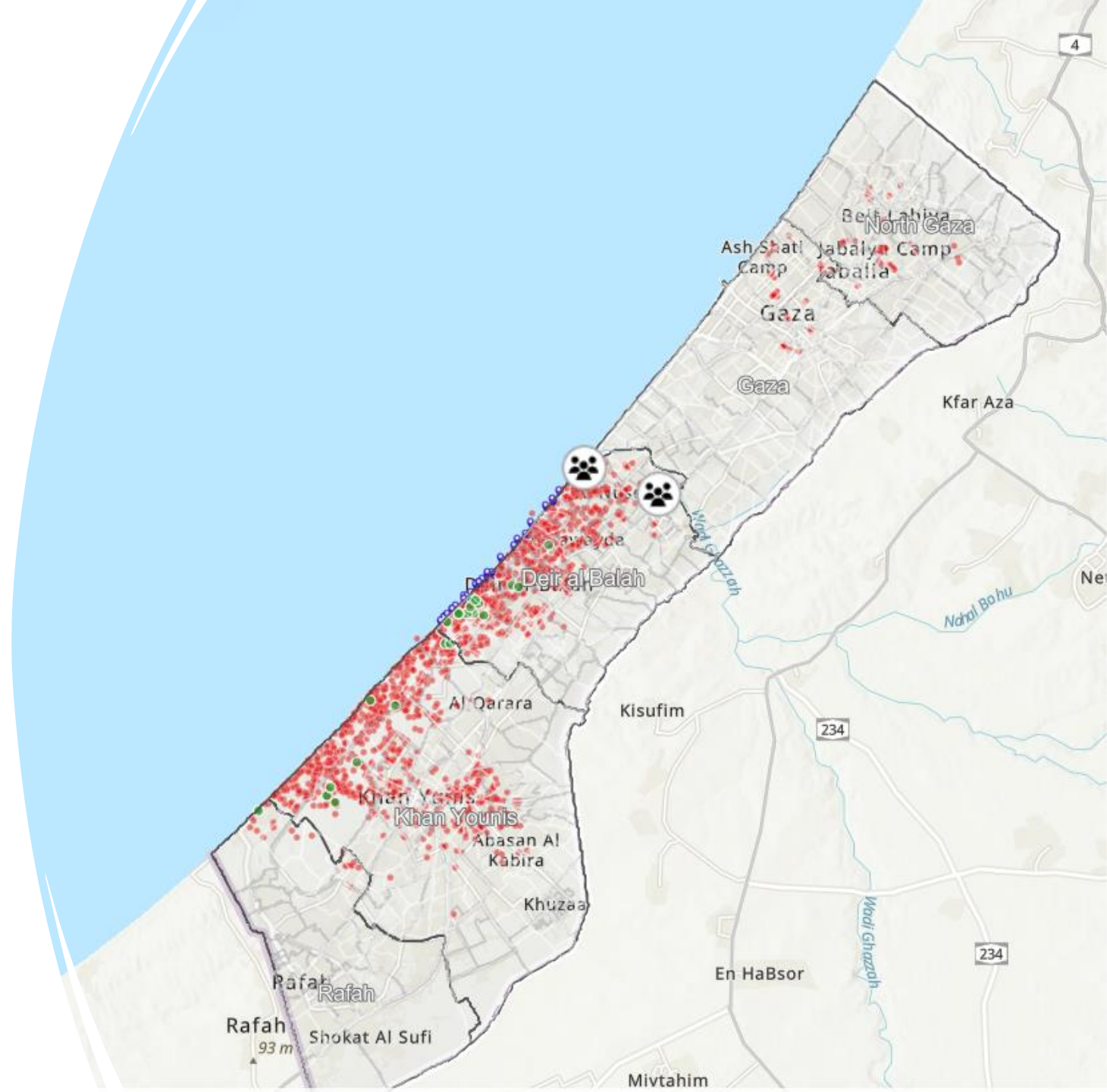


**100,000**

Tents have deteriorated and become unfit for the displaced.

# IM Updates- GIS and Mapping

Map of Sites : Coverage of Shelter Materials and Remaining Needs Based on Recent Field Assessment



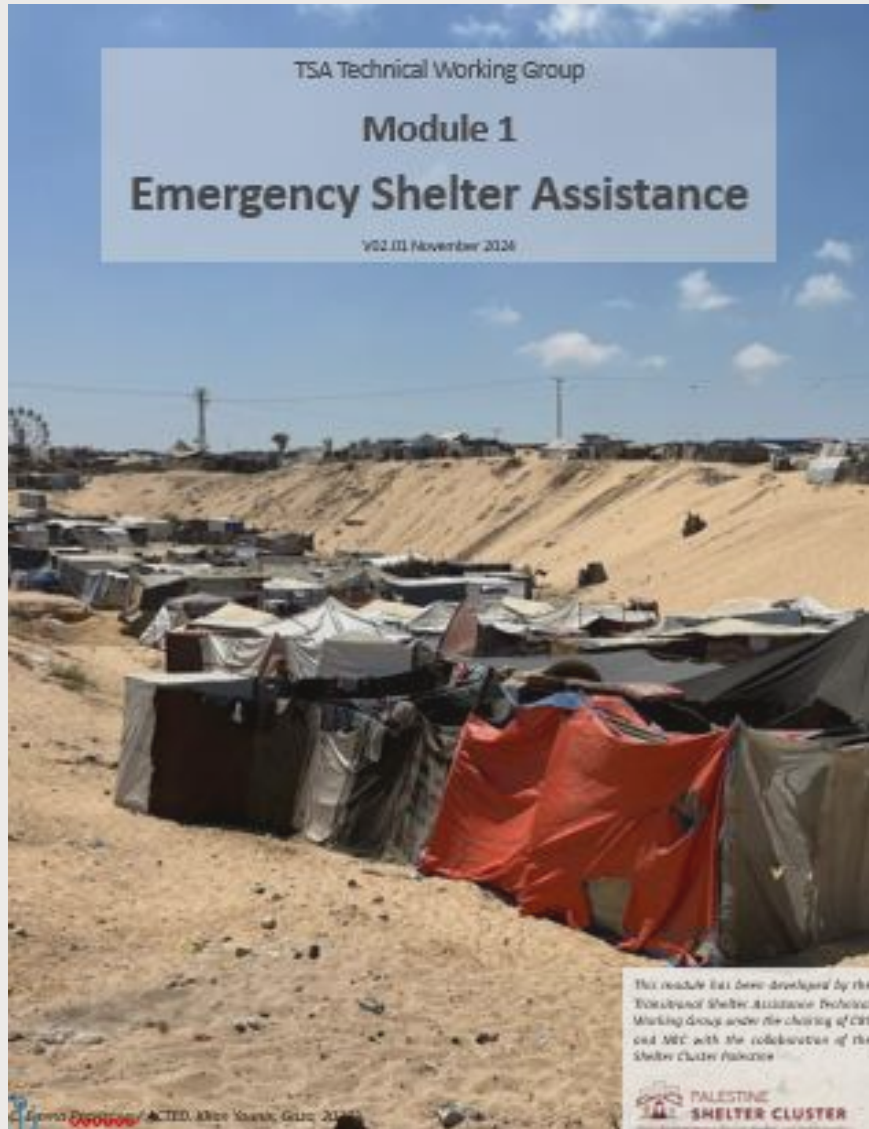


PALESTINE  
**SHELTER CLUSTER**

Coordinating Humanitarian Shelter and Settlements

# TECHNICAL UPDATE

# Module 1



- Activities and modality of assistance
- Targeting
- Coordination
- Distribution guidance
- Technical guidance
- Cross-cutting issues

For

Tents

Sealing-off Kits

Framing kits

Toolkits

Basic Emergency Shelter kits

# Information Education Communication

## Fire Risk Mitigation

- Avoid open flames
- Safe cooking practices
- Use barriers between flames and sheeting
- Maintain distances between shelters
- ....



### FIRE SAFETY IN MAKESHIFT SITES

#### Fire Safety Recommendations

Many IDPs in Gaza are living in Makeshift sites which the Site Management Working group defines as "self-settled by displaced populations, typically without a (formal) site management entity, and with a population of over 10 households". These sites, consisting of humanitarian tents and makeshift self built shelters, pose unique fire risks due to the combination of highly flammable materials, improvised cooking and heating methods, overcrowding and limited infrastructure. Fire incidents in such settings can spread rapidly, potentially leading to devastating consequences. Therefore, implementing robust fire prevention measures is crucial for the safety and well-being of residents. Being aware of the limited control that humanitarian organisations have over the establishment and growth of spontaneous settlements, it is nevertheless important to remember to convey basic measures that help significantly to reduce the risks of fires and to limit their impact when they do occur.

It is understood that all of these basic measures will not be achievable. Partners should strive to consider as many as possible, as far as is possible, realising that any of these measures will help reduce the risk of fire.

#### Site Planning layout

- Where possible ensure and encourage adequate spacing between tents/shelters (at least 2 meters, ideally 3-4 meters).
- Where possible create firebreaks: clear areas or paths at least 30 meters wide every 300 meters.
- Arrange tents in a grid pattern to facilitate easy evacuation.

#### Flammable Materials Management

- Distribute only tents or shelter materials that are non-combustible or combustible with very limited contribution to fire (European Standard EN 13501-1 A or B classes).
- Encourage residents to keep areas around tents/shelters clear of dry vegetation, solid waste and debris.
- Promote proper disposal/storage of waste in designated areas to prevent buildup of flammable trash next to the shelters.
- Encourage storage of fuel for cooking/heating in designated areas away from living spaces.

#### Cooking and Heating Safety

- Where possible, support residents to cook in designated communal cooking areas or outside the shelter and keep away from shelter walls. Ensure cooking stoves are equipped with flame protection mechanisms to prevent accidental fires.
- Encourage residents to avoid cooking inside tents and makeshift shelters or near flammable materials.
- Endeavour to provide safe heating options with clear usage guidelines (EIC materials).

#### Lighting and Electrical Safety

- Households should avoid using candles or open flames for lighting (partners should consider providing solar lamps as alternatives if possible, and/or EIC materials for the correct protection of candles flames).
- Pay attention to electrical setups (connections exposed to water, cables damaged or exposed to breakage, unprotected connections, excessive electrical load, etc.).

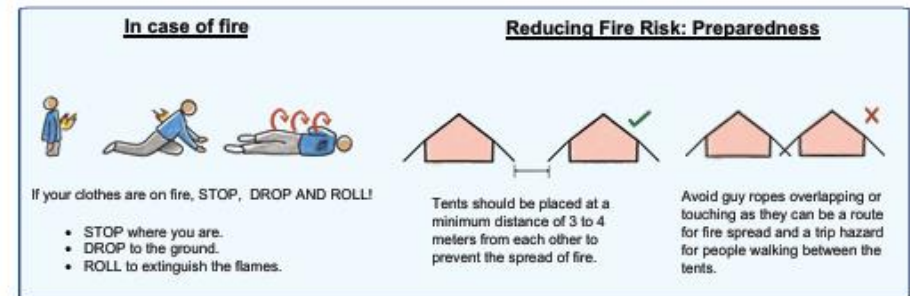
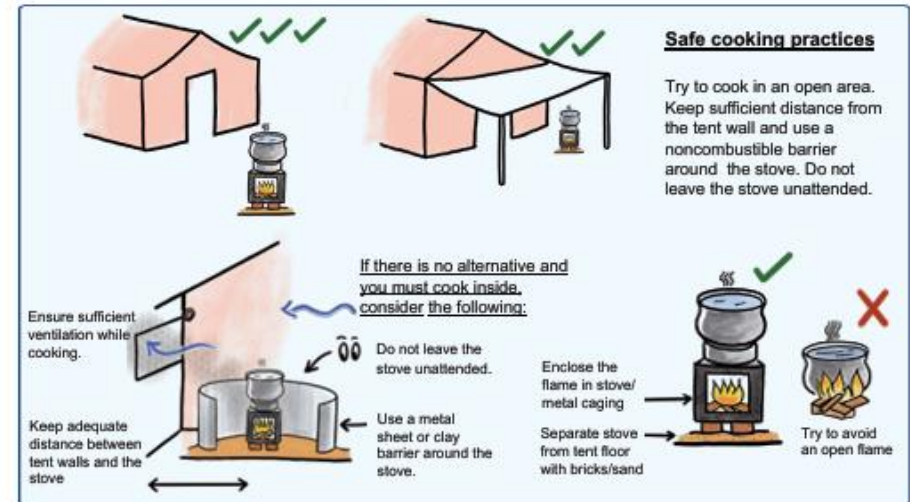
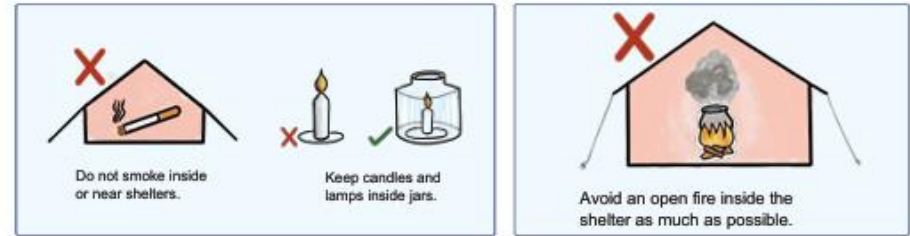
#### Firefighting and Emergency Response

- Distribute sand buckets.
- Establish community alarm systems (bells, whistles). Identify fire wardens.
- Encourage communities to establish escape routes and to share routes with residents

#### Education and Awareness

- Community engagement is very important in fire safety to assess and identify the risks and to disseminate the best practices.
- Distribute EIC materials adapted to the context and the items to be distributed.

## Steps to reduce the risk of fire



# Cash-based Interventions in West Bank

- Mapping of Cash Responses
- Eligibility and Targeting
- Cash-based Activities
  - Repairs
  - Rental support
  - Preparedness
- Assessments
- Levels of Damages
  - Minor
  - Moderate
  - Major
  - Destroyed
- Assistance packages
- Conditionality
- Monitoring and Evaluation
- ...



# AOB

---

- Please reach out if you want to present your work



PALESTINE  
**SHELTER CLUSTER**

Coordinating Humanitarian Shelter and Settlements