



PALESTINE
SHELTER CLUSTER

Coordinating Humanitarian Shelter and Settlements

NATIONAL SHELTER CLUSTER MEETING

19 March 2025

AGENDA

- Introductions
- General Update
- Gaza Updates
- WB Updates
- IM Update
- Technical Update
 - Gaza Debris Working Group Introduction
- Discussion/Q&A
- AOB

INTRODUCTIONS

Choungkyu Ryu (CK)– National Cluster Coordinator

natco.palestine@sheltercluster.org

Maher Alabed– Sub-National Coordinator Gaza

coord2.palestine@sheltercluster.org

Fadi Shamisti – Sub-National Coordinator West Bank

coord1.palestine@sheltercluster.org

Iyad Abu Hammam – Gaza Coordinator

coord.gaza@sheltercluster.org

Mohammad Aklouk – IM Coordinator National

im1.palestine@sheltercluster.org

Leandro Fernandez-Jardon – Technical Coordinator

techco.palestine@sheltercluster.org

<https://sheltercluster.org/response/palestine>

GENERAL UPDATE

- **Changing Operational Environment**

- Air strikes in 18th Morning and movement freeze in Gaza along with the cancelation of the rotation
- Military operation has been extended and increased numbers of demolition order were issued in WB
- OCHA continues to engage with the Cogat and mediators for the supply chain recovery and SC is closely following up
- As of 17th March, 197 clearance requests were rejected with 85 rejection on 16th March (UN2720)

- **Structured SC Coordination**

- Co-Coordination discussion: Bilateral meeting with 2 candidates are on-going with a proposed model : Feedback for evaluation criteria is being waited from the SAG members.
- Protection-mainstreaming with age/gender/disability disaggregated data collection and reporting
- The draft for access strategies and action plans or WB is under discussion at the HCT
- Mailing list cleaning/classification and the SC membership management discussion is ongoing.

- **Donor Liaison and Resource Mobilization**

- Gov. of Japan's interest in the in-kind supports
- Survey on the impact of the US aid freeze initiated by OCHA [Survey on US Aid Termination, March 2025](#)
- Resource mobilization continues with 3 donors and needs for identifying non-conventional donors

GAZA UPDATES

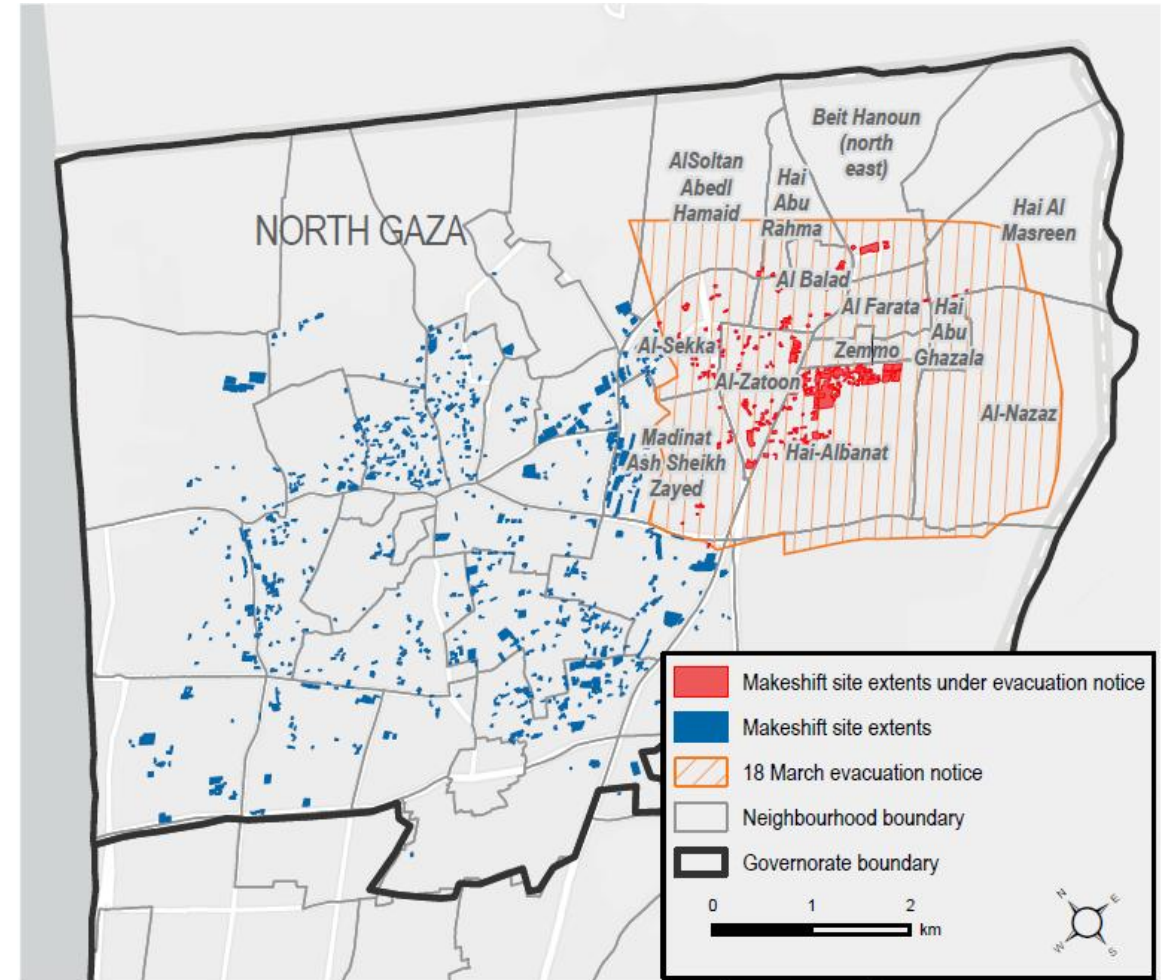
○ **Current Situation in Gaza**

- Most partners have suspended their work, activities, and movements for today until further notice.
- In-person meetings have been postponed
- No damage to partners' facilities has been reported
- IDF issued an evacuation order covering Beit Hanoun in North Gaza and Khuzaa, Abasan al-Kabira and Abasan al-Jadida in eastern Khan Younis
- The operations have affected families fleeing from Zahra and Al-Maghrara in the Netzarim corridor towards the South and dozens of people to begin fleeing from Khuzaa to Mawasi and Khan Yunis downtown
- The PSC at the Netzarim CP left this morning and it is unclear if they handed over the CP to IDF or not.

GAZA UPDATES

- **North Gaza**

- Following the 19 January ceasefire, North Gaza became a key destination for the returnees.
- By 25 February, approximately 18,700 people were estimated to be living in makeshift sites in the current evacuation area
- By 16 March, this had risen by 60% to an estimated 30,100 individuals with sites covering around 260,000 m² of the area.
- This means nearly 1 in 4 people (23%) living in makeshift sites in North Gaza were affected by the 18 March evacuation notice.

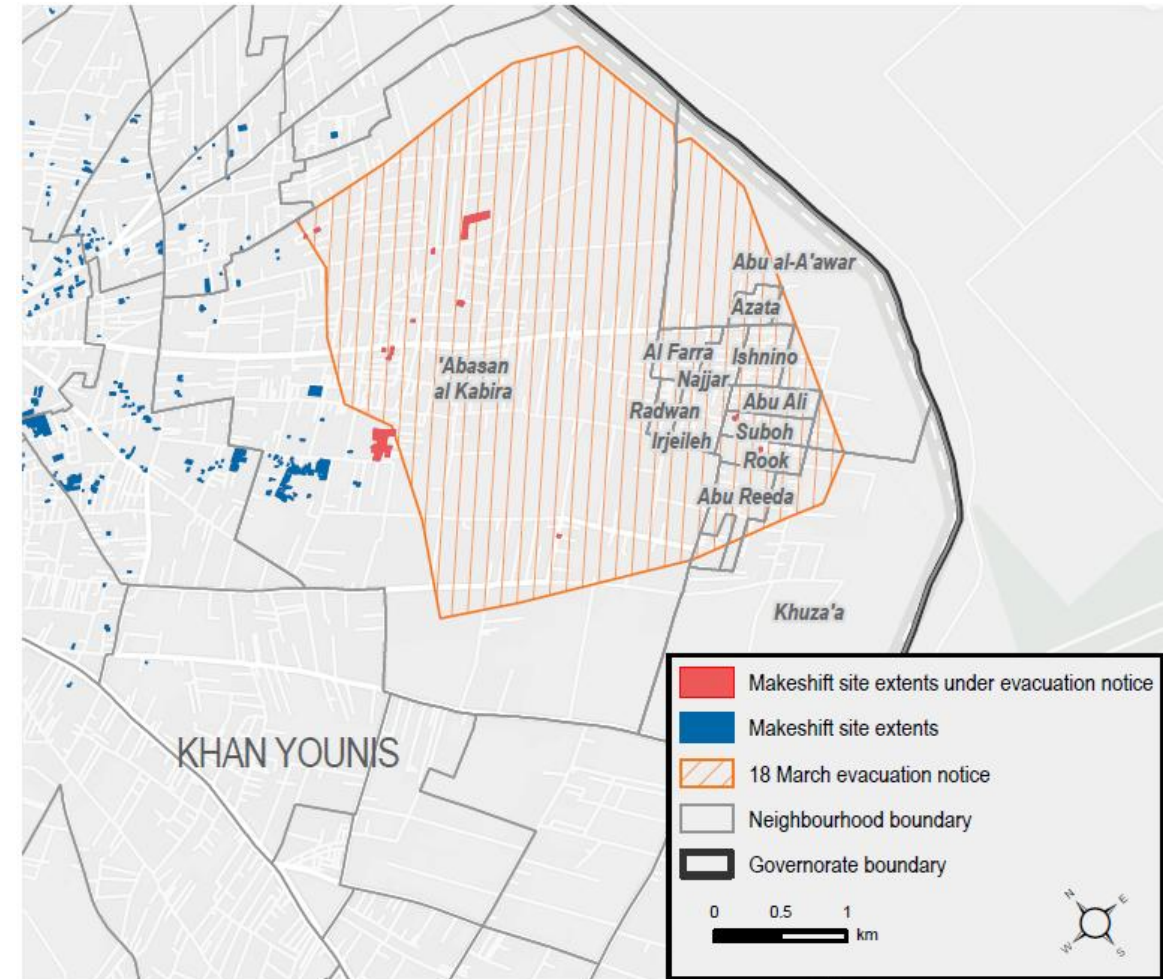


Map 1: Satellite-observed makeshift sites affected by 18 March evacuation notice in North Gaza governorate

GAZA UPDATES

- **Khan Younis**

- The evacuation notice covers a smaller portion of land occupied by makeshift sites, estimated at roughly 40,000 m² with about 3,000 estimated individuals as of 16 March.
- However, this area has also been a destination for recent population movements, with nearly half of its estimated population having arrived after 8 February.
- Further displacement, combined with ongoing disruptions to life-saving humanitarian assistance and over 15 months of conflict-related destruction, will likely deepen household vulnerabilities and increase risks to the safety and survival of affected populations.



GAZA UPDATES

- **Shelter Cluster Specific Updates**

- o OCHA/SMC provides the population update and it was observed that the humanitarian assistance hasn't reached at some areas
- o Fuel stocks is getting low and demining the operational capacity while SMC/SC agreement on piggybacking fuel assistance continues
- o The first review of the Shelter Policy by MoPHW was done through the collaboration with other clusters and the way forward is under discussion

WB UPDATES:

Situation Overview

- Military operations continue in three camps: **Jenin, Tulkarem, and Nur Shames**, restricting access.
- Over **37,000 internally displaced persons (IDPs)** are currently residing in various locations and settings.
- **Tulkarem faces housing shortages**, making it difficult to absorb IDPs.

Key Priorities:

Rental Cash Support: Ongoing Discussion for Targeting and Vulnerability Criteria:

1. Family Size & Overcrowding

- Larger families and those **sharing apartments** due to financial constraints.
- Overcrowding as a key indicator of housing insecurity.

WB UPDATES:

Rental Cash Support: Ongoing Discussion for Targeting and Vulnerability Criteria:

2. Living Conditions

- Families living in **substandard shelters**:
 - Unfinished buildings
 - Makeshift or collective shelters
 - Structurally damaged apartments
 - Overcrowded spaces
- Families residing with host families or exposed to health & safety risks.

3. Displacement Status & Protection Concerns

- Households **at risk of eviction** due to **inability to pay rent**.
- Families identified through **Protection referral mechanisms** as high-priority cases.

WB UPDATES:

Rental Cash Support: Ongoing Discussion for Targeting and Vulnerability Criteria:

4. Socio-Economic Conditions

- Economic vulnerability assessed via UNRWA data (household income, dependency ratios, employment stability).
- Households with high dependency ratios (many dependents under 18).
- Families who lost their primary source of income due to military operations.

5. Presence of Persons with Disabilities (PWDs) & Chronic Illnesses

- Priority given to families with members facing disabilities or chronic illnesses due to additional financial and logistical challenges.

6. Female-Headed Households (FHH) & Other Vulnerable Groups

- FHHs, elderly-headed households, and families with young children prioritized due to increased vulnerability and limited income opportunities.

WB UPDATES:

Addressing Uncertainty of Return

- If displacement extends for several months **(most likely)**, **temporary shelter solutions** must be considered:
 - **Rental support** extension: based on continuous vulnerability assessment and legal support to secure long-term rental agreements between landlords and tenants.
 - **Finishing unfinished apartments/buildings:** through rental/use agreements between landlords and tenants.
 - **Supporting host and hosted families:** for long-term accommodation solutions by upgrading shelters (increasing living spaces, adding /removing partitions, adding facilities...).
 - **Collective centers upgrade**
 - **Prefab shelters** could be an option for families who lost their homes/ destroyed inside the camps.

Assessment :

- **Continuous assessment** to track needs and gaps.
- **SAG Group Discussion :**
 - Identifying **information gaps**.
 - Developing a **cluster-specific assessment** strategy.



PALESTINE
SHELTER CLUSTER

Coordinating Humanitarian Shelter and Settlements

IM UPDATE

IM UPDATES

- **Challenges in providing shelter assistance**
 - o 2 weeks of supply blockade demined the operational capacity with low stock of fuel
 - o Current SNFI Stock in Gaza by SC partners

Remaining Stock	UNRWA		CRS		BLDA		MAAN		ACTED		PHC		NRC		TOTAL		Grand Total
	North	South	North	South	North	South	North	South	North	South	North	South	North	South	North	South	
Tarps	306	1,739	7,347	13,521	1,357	0	563	0	0	450	460	0	0	500	10,033	16,210	26,243
Mattresses	5,886	0	1343	951	560	0	169	0	0	0	0	0	0	0	7,958	951	8,909
Blankets	22,938	32,107	2,044	3,542	2,084	0	269	0	0	0	0	0	0	0	27,335	35,649	62,984
Tents	1,716	19	148	47	0	0	0	0	0	0	1,300	0	1,126	100	4,290	166	4,456

IM UPDATES

- **Number of tents distributed in the past 2 weeks**
 - o Comparing to the previous reporting, tents distribution was decreased
 - by 12, 346 (including no-update)
 - By 5,383 (excluding no-update)

Tents Distribution	UNRWA	CRS	ACTED	PHC	NRC	ACF	PRCS	Unicef	GDD	AIOCP	Grand Total
6/3/2025	6,445	111	7	1,300	1,976	900	1,620	1,730	30	2,683	16,802
15/3/2025	1,735	195	-	1,300	1,226	N/U	N/U	N/U	N/U	N/U	4,456
Difference	4,710	(84)	7	-	750	N/U	N/U	N/U	N/U	N/U	-5,383



PALESTINE
SHELTER CLUSTER

Coordinating Humanitarian Shelter and Settlements

TECHNICAL UPDATE

- **Technical Updates**
- **Gaza Debris Management Working
Group**

Technical UPDATES

Newly published:

- [Transitional Solutions Standards](#)
- [ESK \(videos & IEC, English and Arabic\)](#)

Under development

- ESK Technical Guidance
- Targeting & Prioritization
- Clothing distribution. Lessons learned

In the pipeline

- Harmonised PDM

TRANSITIONAL SOLUTIONS STANDARDS FOR GAZA

Title	Transitional solutions Standards for Gaza
Publisher	Ifernandezjardon
Date	Friday, March 14, 2025
Type	Technical Support and Design
Filename	Transitional Solutions Standards for Gaza_v01_00.pdf
Source	Shelter Cluster TSA WG, CRS, Bath University, Kindling
Response	Palestine
Language	English
Tags	Technical Guidance Protection WASH CCCM Early Recovery
Description	The Stand-Alone Transitional Solutions Standards for New Construction in Gaza have been developed to provide clear, context-specific guidance on the design and implementation of transitional shelters. These standards consider a range of shelter solutions with varying structural designs, cladding, roofing, and flooring options, including both single and double-storey configurations. Given the protracted nature of displacement in Gaza and the urgent need for adequate housing, these solutions are designed to be durable, adaptable, and responsive to the needs of affected populations.



[Download](#)

Goal: to **facilitate coordination** and help ensure that debris interventions are **safe, efficient and responsive** to needs on the ground.

MoPW&H

AICS

AIOCP

BINAA

DRC

ENABEL

Gaza Municipality

Halo Trust

HI

HLP TWG

MAG International

Mine Action AOR

NRC

OCHA

Palimar

PNGO

Shelter Cluster

UNDP

UNEP

UNESCO

UN Habitat

UNMAS

UNOPS

UNRWA

WFP

World Bank

Co-chaired by UNDP and UNEP

Endorsement from Ministry of Public Works and Housing

Status:

- ✓ Established in April 2024
- ✓ Meetings held monthly
- ✓ Donors Briefing 12 August 2024
- ✓ Developed ToRs and Debris Framework
- ✓ Working on integrated SOPs



Debris management works are to be:

- ✓ 'Demand driven'
- ✓ Coordinated with relevant **Palestinian authorities** & international agencies
- ✓ Facilitate humanitarian assistance and recovery works

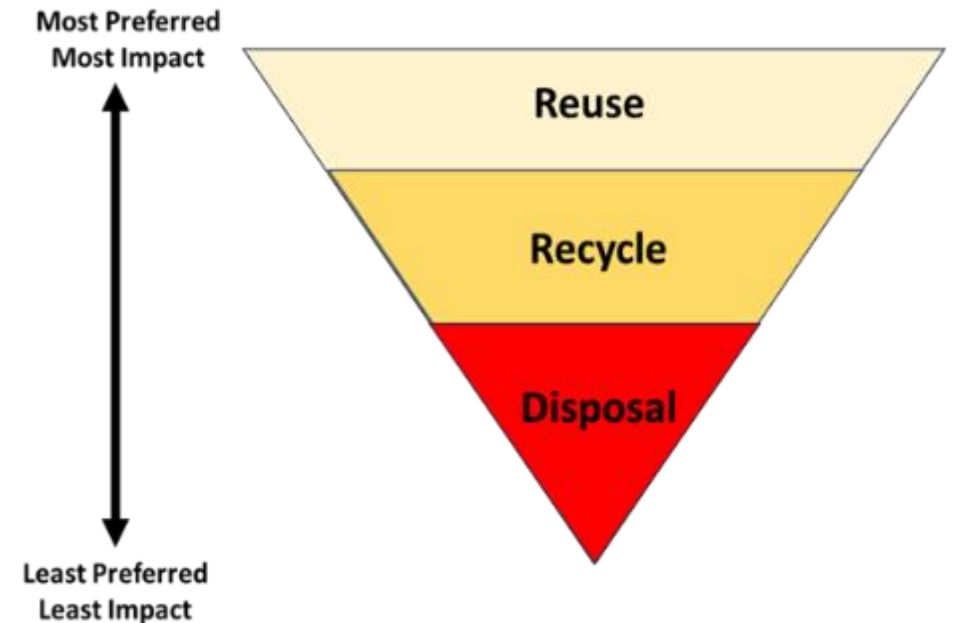
Prioritisation based on immediate needs to clear and make safe:

- Critical routes for public and humanitarian access
- Damaged critical infrastructure to facilitate repair and rehabilitation works
- Areas designated for the establishment of temporary shelters and other humanitarian activities

Debris Management Framework setting of minimum requirements and standardize debris management works in Gaza **with Guiding Principles** :

- ✓ Planning
- ✓ Community Liaison
- ✓ Design
- ✓ Safety and Awareness
- ✓ Debris and Waste - Recycling
- ✓ Cultural Heritage Sites
- ✓ Explosive Ordnance (EO)
- ✓ Human Remains
- ✓ Reporting

Focus on Debris Recycling



*A **first** in debris management globally*

Walk through DWG's ReliefWeb page:

<https://response.reliefweb.int/palestine/gaza-debris-management>

Under finalisation:

GAZA DEBRIS INFORMATION SYSTEM

DEBRIS FORMS | DEBRIS MANAGEMENT DASHBOARDS

GAZA DEBRIS INFORMATION SYSTEM

DEBRIS FORMS | DEBRIS MANAGEMENT DASHBOARDS

Debris Forms

Pick one of the forms below to report on the advancements in debris management in the Gaza Strip.



[Debris Intervention Planning Form](#)

Inform your planned debris work.

[View](#)



[Debris Management Form](#)

Inform your agency's ongoing debris work.

[View](#)



[Debris Removal Request Form](#)

Request debris removal in your area.

[View](#)



[Fuel Request Form](#)

Request fuel for debris related work.

[View](#)

Situation Dashboards and Maps

Pick one of the dashboards below to track the advancements in debris management in the Gaza Strip.



[Planned and Ongoing Debris Work](#)

A dashboard for tracking debris work in Gaza.

[View](#)



[Debris and Damage Quantification](#)

A dashboard to keep track of total debris generated by the war in Gaza.

[Static](#)

[Dynamic](#)



PALESTINE
SHELTER CLUSTER

Coordinating Humanitarian Shelter and Settlements

Discussion/Q&A



PALESTINE
SHELTER CLUSTER

Coordinating Humanitarian Shelter and Settlements

AOB

AOB

- **NSC Meeting Schedule/Conflict with ICCG in Gaza (further discussion in Gaza SAG)**
- **Access Monitoring and Reporting Framework (AMRF) Presentation on 2nd April during the next NSC meeting**
- **Survey on Humanitarian Programming for Adolescents and Youth**
[Adolescents and Youth Working Group \(AY WG\) - 4Ws questionnaire](#)
- **PSEA Workshop PSEA on 26th March (Time: 12:00 PM – 5:00 PM)**
<https://unicef.zoom.us/j/97762167865>
Gaza: On-hold / Ramallah: Continuing as planned.