



PALESTINE
SHELTER CLUSTER

Coordinating Humanitarian Shelter and Settlements

NATIONAL SHELTER CLUSTER MEETING

20 August 2025

INTRODUCTIONS

Jeroen Quanjer – National Coordinator

natco.palestine@sheltercluster.org

Maher Alabed – Sub-National Coordinator Gaza

coord2.palestine@sheltercluster.org

Fadi Shamisti – Sub-National Coordinator West Bank

coord1.palestine@sheltercluster.org

Iyad Abu Hammam – Gaza Coordinator

coord.gaza@sheltercluster.org

Mohammad Aklouk – IM Coordinator

im1.palestine@sheltercluster.org

Haneen Al Tali – IMO Gaza

im2.palestine@sheltercluster.org

Oscar Gobbato – IM Specialist Amman/ Jerusalem

ims.palestine@sheltercluster.org

Shada Qahoush – Interim Technical Coordinator

Jehan Salim – Incoming Technical Coordinator

techco.palestine@sheltercluster.org

Sneha Malani – Shelter Cluster Technical Advisor

Sneha.Malani@crs.org

▼ COORDINATION TEAM



Fadi Shamisti
Coordinator West Bank
NRC
+972 (0)54 666 3902
coord1.palestine@sheltercluster.org



Iyad Abu Hammam
Cluster Coordinator, Gaza
NRC
+972 (0)59 707 7233
coord.gaza@sheltercluster.org



Mohammed T. Al Aklouk
Cluster Information Management
Coordinator Palestine
NRC
+972 (0)595911995
+972 (0)562562445
im1.palestine@sheltercluster.org



Jeroen Quanjer
National Coordinator Shelter Cluster
Palestine
NRC
+962791223485
+972542776886
natco.palestine@sheltercluster.org



Maher Alabed
Shelter Cluster Sub National Coordinator-
Gaza
NRC
+972 (56) 2562663
coord2.palestine@sheltercluster.org



Sneha Malani
Shelter Cluster Technical Advisor
CRS
Sneha.Malani@crs.org



Jehan Salim
Shelter Cluster Technical Coordinator
Palestine
NRC
techco.palestine@sheltercluster.org



Haneen Al TALI
Information Management Officer
Palestine
NRC
im2.palestine@sheltercluster.org



Oscar Gobbato
IM Specialist Shelter Cluster Palestine
NORCAP
+962 79-1223-535

Website - <https://sheltercluster.org/response/palestine>
Email Registration - [Shelter Cluster Mailing List Registry](#)

AGENDA

- General / National Update
- Gaza Updates
- Shelter-focused findings from the second **HOVA follow-up by REACH IMPACT**
- WB Updates
- ACF rental support program presentation
- IM Update
- Technical Update
- **Debris Management WG update**
- Discussion /Q&A / AOB



CONTEXTUAL / NATIONAL UPDATE

- Gaza
 - Catastrophic conditions for 1,4M People in Need
 - Opening of border to allow shelter materials coming in light of Gaza City operations: [Shelter Cluster Position](#)
 - JIMOC
- West Bank:
 - [Needs assessment](#) finalised: Report and dashboard; GiHA report
 - E1 Settlements; Masafer Yatta
 - [Preparedness & Emergency Response Plan \(2025\)](#)
- World Humanitarian day



PALESTINE
SHELTER CLUSTER

Coordinating Humanitarian Shelter and Settlements

GAZA UPDATE

Overview of the situation in Gaza

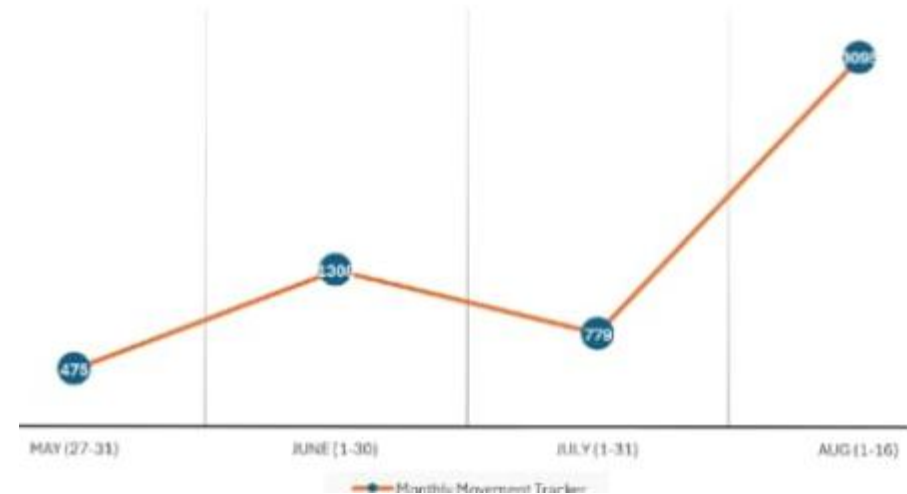
According to data collected by Acted's team at the reception point, a significant increase in displacement was recorded from North Gaza to the South between 10–16 August 2025. Approximately 3,095 individuals were observed crossing the Nitzarim corridor, carrying their belongings through various means of transportation, including cars (40%), trucks (30%), tuk-tuks (28%), and donkey carts (2%). The majority of those displaced were families (83%), while individuals

Analysis of Displacement Trends Over the Past Four Months

Displacement figures showed a significant surge, peaking in August. This increase is attributed to two primary factors:

1. Evacuation Orders – Issued in early August across Asabra, Al Tufah, and Al Zaitoun neighborhoods, compelling thousands of families to leave their homes under pressure, fear, and in the absence of safe alternatives.
2. Military Operations – The IDF's announcement of an operation to encircle Gaza City triggered widespread panic and accelerated displacement, particularly from areas located near the anticipated zone of operations.

Monthly Movement Tracker



Update on Shelter Materials Entry to Gaza

- On the 17th of Aug, DHC informed that Shelter materials will be allowed into Gaza for both South and North. Approval for the entry of materials to the North has not been clearly confirmed.
- Our aim is to send as much shelter material (tarpaulins and tents) to the North before any possible closing of the crossing.
- So far, only one organization has received approval to bring in around 1,500 tents, and that was only for the South.
- Efforts are being made to coordinate the partnership of NNGOs with consigners (ICRC, IOM, UNICEF)..
- Partners are facing major challenges: confusion, resubmissions for clearance, denials, registration issues, and donor policy restrictions.
- In the past three days, no additional partners have received approval, leaving the situation highly concerning and uncertain.
- If any partner or organization has approved tents or tarpaulins ready to enter, contact the Shelter Cluster so we can be manifested in the cargo prioritization. it is important to provide the UN2720 request number or UTN (Unique Tracking Number) so the shipment can be manifested in the cargo prioritization
- Prioritization meeting is planned tomorrow at the ICCG level to identify priority shipments, routes and destination.

Update on Shelter Materials Entry to Gaza

- **Several discussions and meetings were conducted with the SAG, SC partners, 2720, Logs Cluster, SMC, and OCHA in preparation to receive and distribute the Shelter Materials.**
- The Shelter Cluster and its partners reaffirm that the entry of materials must serve both the North and the South. Our assistance is given to people in need where they are, in line with humanitarian principles.
- It was agreed in the meeting that tents and tarpaulins (tarps) will be prioritized as the first items to be dispatched. Other NFIs will be considered at later stages, depending on needs.
- The percentage of tents and tarps allocated to the North and South will be based on actual needs on the ground.
- Shelter Cluster partners are requested to remain on standby and ready to respond, as developments are moving quickly and are expected to continue evolving in the coming days.
- Enhance coordination among all partners to reach the maximum number of people in need, ensure better coverage, and avoid duplication at sites. This will be coordinated with the SMC.
- Share any information you receive related to shelter, including items received, distributions, or any relevant activities, so we can improve coordination and awareness across the response.

Update on Shelter Materials Entry to Gaza

Key Update from Meeting with Logistics Cluster Coordinator and OCHA

- The Logistics Cluster Coordinator raised concern about looting both en route and inside Gaza, with tents highlighted as particularly high-value items at risk.
- It was recommended that distributions should take place as quickly as possible after delivery to mitigate the risk of looting inside the city.
- The Logistics Cluster will deliver items to the delivery points identified by partners in Gaza city.
- To support this, partners are strongly encouraged to **identify their target sites and households in advance.**

Note: Partners that are ready, have identified their target sites/households, and have the capacity to distribute as soon as possible will be prioritized in the cargo.

Update on Shelter Materials Entry to Gaza

Meeting with DHC on Preparedness Planning , 15 August

- Cluster Coordinators presented their preparedness plans, outlining key points for both the North and the South.
- Each cluster highlighted its **specific asks and requests** needed to facilitate the response.
- In addition, **inter-sectoral asks and requests** were raised to ensure a coordinated and effective preparedness approach.

Preparedness | Key Points

In the context of escalation in military operations in Gaza City

- Possible large-scale displacement, people will also choose to remain in north.
- Advocacy ongoing for entry through all routes: north and south. Serve people where they are.
- As agreed by SAG, priority items in first phase are tents and tarps for both, north and south (prioritization of 60% tents and 40% tarps allocation on trucks for north and south, as per [SAG Position](#)).
- We will continue to monitor the situation closely, and allocations may need to be adjusted accordingly.

In the context of escalation in military operations in Gaza City

North

- Partners have already pre-identified sites and people in need (and SC encourages continuing to do so), to carry out immediate distributions and mitigate risks of looting.
- Partners to carry out rapid assessments and quick distributions based on operational feasibility and security conditions. Partners to carry out blanket distributions when required.
- Partners to reach out to SC and SMC (Joint IM Cell) for referrals. SMC to provide site data where available,

South

- Newly displaced sites: Rapid distributions, to consider blanket distributions. partners to verify data as far as possible.
- Existing sites: needs more targeting and prioritization. Partners to reach out to SC and SMC (Joint IM Cell) for referrals.

Preparedness | Key Points

Tools and coordination mechanisms

- Joint IM Cell activated for efficient referrals and data management in the emergency
- Rapid reporting tool: activated (currently being tested with few partners)
- Regular monthly 5W to continue in parallel for accurate data reporting
- Intersectoral referral system with Protection Cluster for critical vulnerable cases
- Intersectoral incident reporting channel for referrals

GENERAL UPDATES

HF 3rd Reserve Allocation:

- 9 concept notes received,
- Scoring of the projects was submitted last week,
- Just finished the SRC meeting to identify the top scored projects to be recommended for further consideration



PALESTINE
SHELTER CLUSTER

Coordinating Humanitarian Shelter and Settlements

WB UPDATE

WB UPDATES

Multiple consultation meetings to discuss temporary shelter solutions for IDPs and outcomes

Goals:

Review shelter solutions for IDPs outside camps → To assess whether to continue with rental subsidies or explore other modalities such as upgrading substandard and unfinished housing units or temporary shelters.

Address sustainability and political implications → To examine both funding gaps and the risk of political and social implications, especially around any permanent-looking structures outside camps.

UNRWA Perspective

Rental subsidies preferred → Seen as the quickest and least politically sensitive response given uncertainty over camp returns.

Funding gaps and equity concerns → More than 1,500 families remain excluded; targeting only the most vulnerable has previously triggered backlash, as communities perceive all IDPs as equally entitled.

Risks of upgrade/ rehabilitation substandard and unfinished building → Landlords may exploit the scheme, demanding full upgrades.

WB UPDATES



Government Perspective

PA funding shortfall → UNRWA and other cluster partners covered ~80% of prioritized families, but PA lacks funds for the remaining 20%, despite raising the issue with donors.

Misuse of subsidies → Some families failed to pay landlords despite receiving cash, forcing government to intervene and settle the problem.

Exploring alternatives → MOSD suggested **bulk leasing entire buildings for efficiency** and is open to considering temporary shelters on public land, though this requires ministerial approval and careful cost analysis (utilities and services).

Technical & Field Insights

Parallel solutions are essential → No one-size-fits-all; rental support should continue but complemented by substandard unit rehabilitation or temporary shelters.

Value-for-money matters → Cost comparisons across rental assistance, substandard/ unfinished unit upgrades, collective shelters, and temporary solutions are needed to ensure efficiency.

Durability concerns → Even return to camps is not fully durable for those whose homes were destroyed.

Key Agreements

Rental subsidies remain the immediate primary option → It provides fast relief and with less political and social implications compared with other solutions .

Need for parallel modalities → To diversify support and meet donor requirements for sustainability and exit strategies.

Political sensitivities guide all decisions → Any shelter solution outside camps must avoid being seen as permanent resettlement outside the camps.

WB UPDATES

Next steps

Shelter Technical team to prepare presentation → Compile lessons from region such as Jordan, Lebanon, Syria, and present cost and value-for-money comparisons of rental subsidies, unit upgrades, collective shelters, and temporary units.

MOSD – Government input → Consult the Minister on feasibility of using public land for temporary shelters and bulk leasing; analyze findings from the rental market survey.

UNRWA – Internal review → Explore options mainly reconsider the potential role of substandard and unfinished building rehabilitation.

Other updates: E1-annexation plan:

- Israel announced to proceed with the E1 annexation plan. The plan includes the construction of 3,500 settlement housing units.
- 18 Palestinian Bedouin communities are directly affected and might be entirely displaced.
- The plan may also involve fencing or expanding the separation wall with direct impacts and potential displacement for families currently living in Area B (Abu Dis and Alizaryiah).
- It would cut current access routes throughout the West Bank and changing travel routes for Palestinians from south to north.

WB UPDATES



PALESTINE
SHELTER CLUSTER

Coordinating Humanitarian Shelter and Settlements

IM UPDATE (Gaza)

IM UPDATES (Stock Status)

Available stock of key
shelter items in Gaza
(North and South), as of
[05 August 2025].



"Nothing in stock... for now!"

IM UPDATES (Gap Analysis Result as of 5th of august)

Based on the number of people reached over the past six months and the number of people newly displaced during the same period, a thorough analysis—taking all relevant factors into account—indicates that a significant number of people still urgently require shelter assistance.

Emergency Shelter Items



TENT



TARPAULIN



PLASTIC SHEET

1.45 M



PEOPLE IN NEED

Household Items



MATTRESS



BLANKET



CLOTHING

1.45 M



PEOPLE IN NEED

(Gaza - Government Media office)

- ◆ Approximately **223,000** housing units have been completely destroyed.
- ◆ Approximately **134,000** housing units have been severely damaged and are uninhabitable.
- ◆ Approximately **212,000** housing units have been partially damaged.
- ◆ **288,000** Palestinian families are currently without shelter.
- ◆ **117,000** tents out of a total **135,000** have deteriorated completely and are no longer suitable for living.

TOTAL AFFECTED STRUCTURES

192812

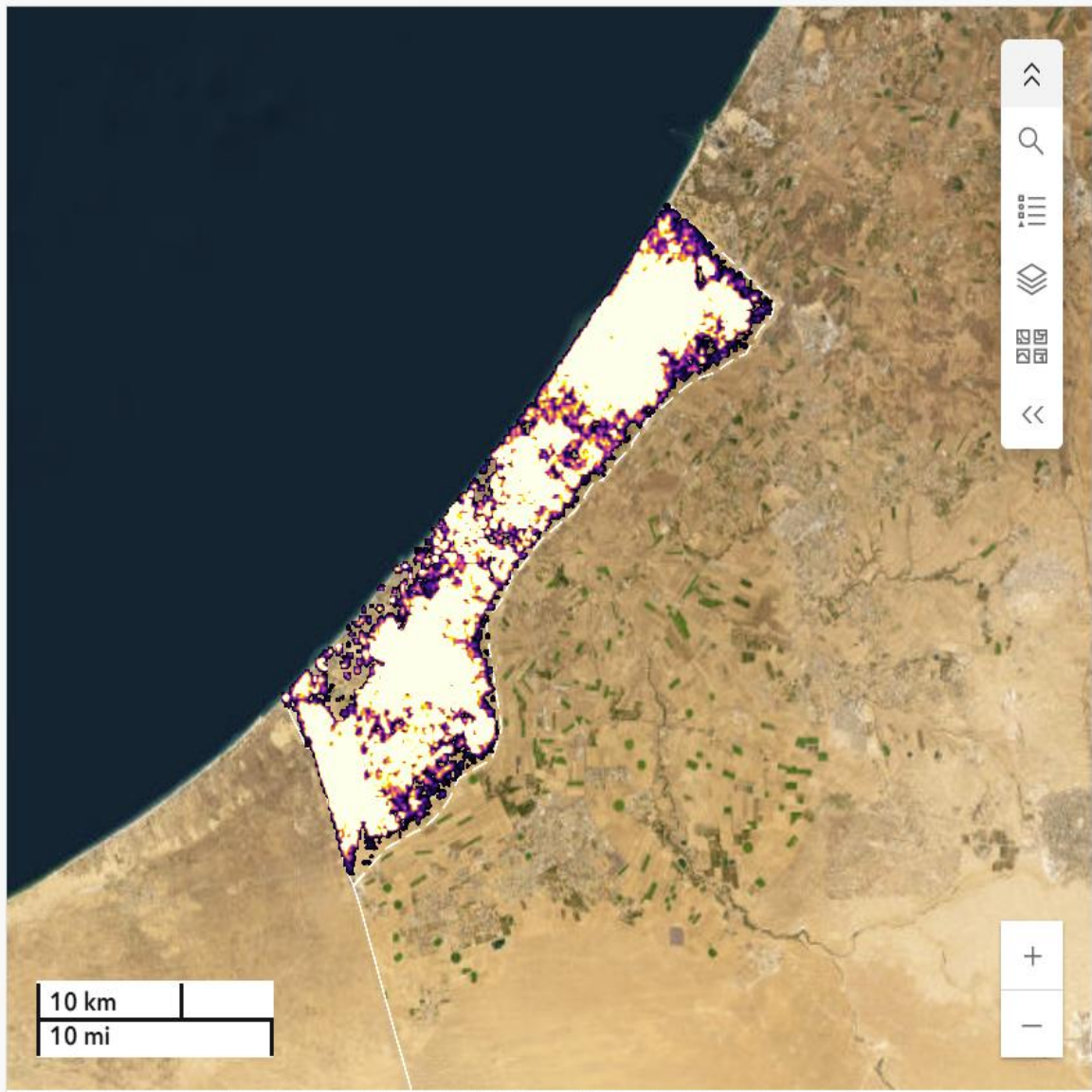
Possible, moderate, severe damage or destroyed

[08 July 2025]

Legend

UNOSAT Gaza CDA - Gaza Strip Comprehensive Damage Assessment 08 July 2025 - Damage Density

Main_Damage_Site_Class_13



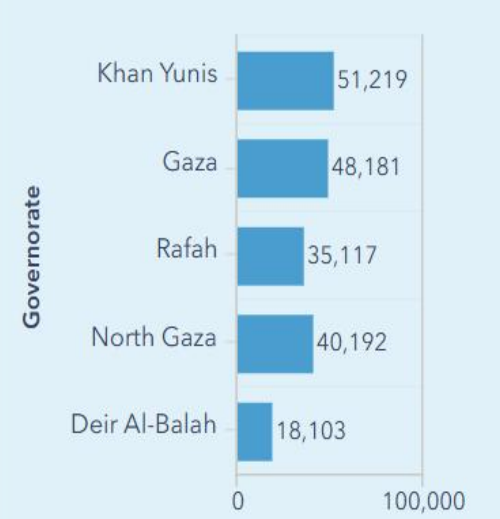
Earthstar Geographics | Produced by: United Nations Geospatial Contributor: UN... Powered by Esri

Destroyed
102,067
Individual buildings

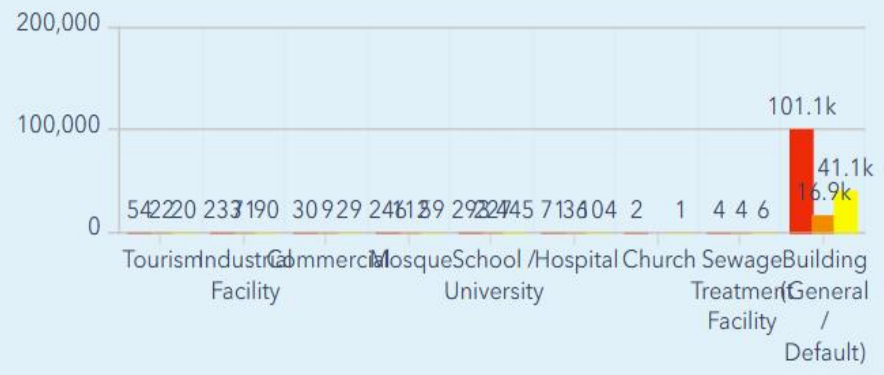
Severely damaged
17,421
Individual buildings

Moderately damaged
41,895
Individual buildings

Damage count by Governorate [08 July 2025]



Summary of Building Damage by Facility Type [08 July 2025]



Destroyed Severe Damage Moderate Damage

Note: This dashboard shows data and statistics for individual buildings, which do not equal number of destroyed housing units. As 1 building may have several or multiple apartments

Shelter Cluster Dashboards



PALESTINE
SHELTER CLUSTER

Coordinating Humanitarian Shelter and Settlements

Technical Update

Technical Updates: Gaza

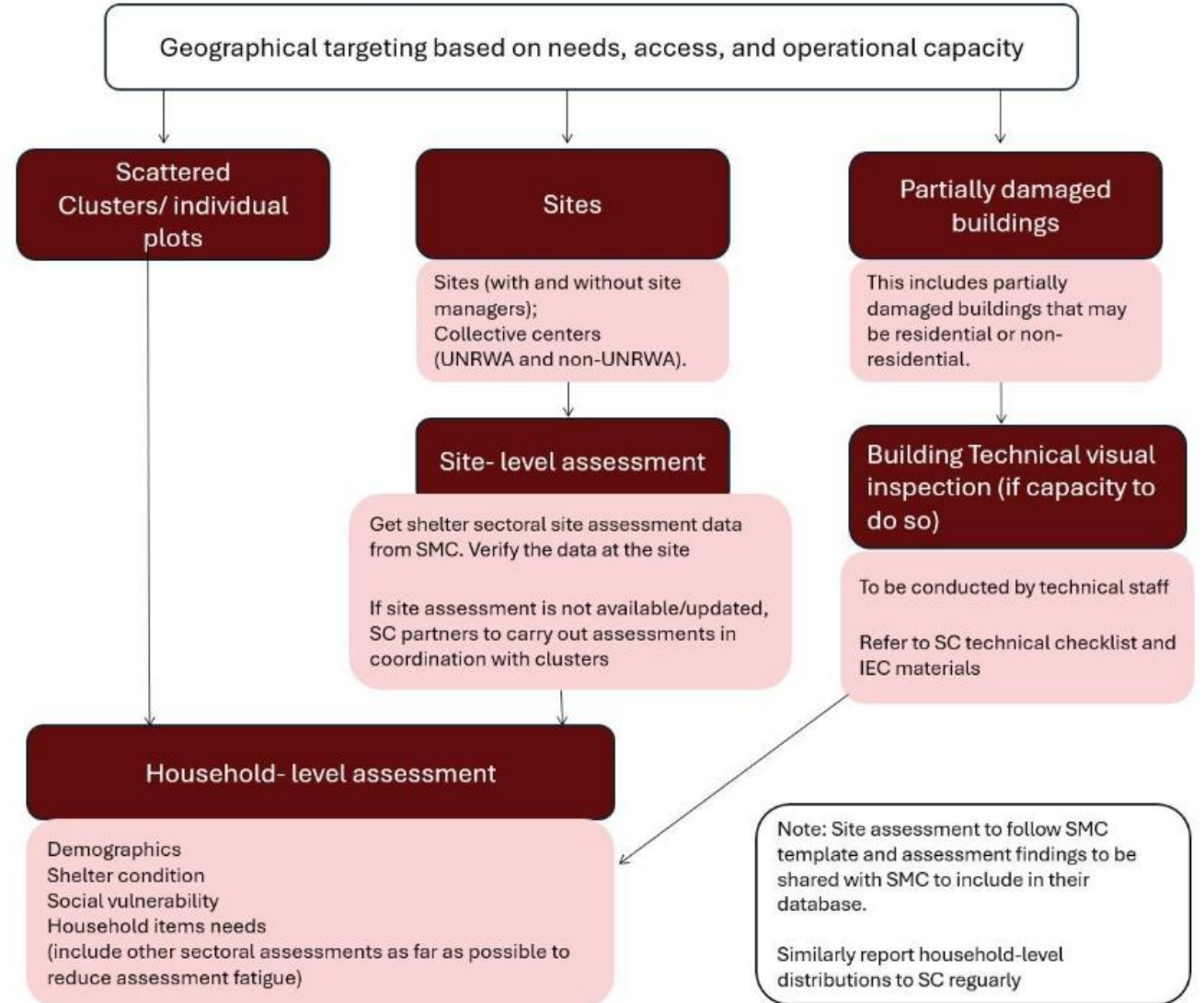
1) Targeting and Prioritization of shelter and household items

Status: Draft completed

Next Steps: Under SAG, WASH and Protection Cluster review.

Assessment Approach for Emergency Shelter Assistance in Gaza

Assistance should be based on needs assessments as far as possible. Type of assessments could be dictated by
a) access/availability of materials in Gaza,
b) sheltering conditions across typologies,
c) operational i.e. security constraints.



Technical Updates: Gaza

2) IEC materials Supporting households to inspect damaged buildings (with risk reduction messaging and emergency shelter response options)

Status: draft 2 ongoing

Next Steps: to be shared with Local
Coping Mechanisms TWG in Gaza for
review.

An initial visual inspection

BEFORE using any house or property

1. Ask for permission from the owner

Written permission, or a verbal agreement.



2. Assess the damage, as best you can

Carefully assess the safety of your home.

OUTSIDE CHECK

Walk around the building (if possible) and look for major structural issues. Signs of danger. Do not enter if you see:



Parts of the building
collapsed or leaning



Deep cracks in
exterior walls



Bowed/bulging walls.

→ The building is likely to be structurally UNSAFE.

→ Also check if the roof or balcony is sagging, or if any large pieces (like chimneys, balconies, or decorative blocks) are loose and at risk of falling.

WINDOWS



Install the tarpaulin with timber and nails if available, or ropes to tighten the four ends of the tarpaulin to cover the entire opening area. Create a barrier or railing to prevent risk of accidents

- Remove any remaining shattered glass. Be very careful and use gloves.
- Cover the opening using wooden boards (if available), or with tarpaulins or plastic sheet, securely fastened with rope or timber battens and nails.
- Old windows and doors can be reused and adjusted to fit the size of the openings.
- All openings must have safety barriers to a minimum of 1m. Keep children away from insecure windows.

Keep Children Away from windows / add barrier



PALESTINE
SHELTER CLUSTER

Coordinating Humanitarian Shelter and Settlements

Discussion / Q&A / AOB

- **Upcoming meetings:**

- National SAG: 2:30PM 09 August
- Gaza Shelter Cluster meeting: 10:30 AM, 30 August
- Gaza SAG meeting: 2:00 PM, 28 August
- WB Shelter Cluster meeting: 10:00AM, 26 August
- WB SAG meeting: 10AM, 02 Sept
- **Next National Shelter Cluster meeting: 1PM, 3rd September**
 - Partner presentation?