



PALESTINE
SHELTER CLUSTER

Coordinating Humanitarian Shelter and Settlements

NATIONAL SHELTER CLUSTER MEETING

23 July 2025

INTRODUCTIONS

Jeroen Quanjer – National Coordinator

natco.palestine@sheltercluster.org

Maher Alabed – Sub-National Coordinator Gaza

coord2.palestine@sheltercluster.org

Fadi Shamisti – Sub-National Coordinator West Bank

coord1.palestine@sheltercluster.org

Iyad Abu Hammam – Gaza Coordinator

coord.gaza@sheltercluster.org

Mohammad Aklouk – IM Coordinator

im1.palestine@sheltercluster.org

Haneen Al Tali – IMO Gaza

im2.palestine@sheltercluster.org

Oscar Gobbato – IM Specialist Amman/ Jerusalem

ims.palestine@sheltercluster.org

Shada Qahoush – Technical Coordinator

techco.palestine@sheltercluster.org

Sneha Malani – Shelter Cluster Technical Advisor

Sneha.Malani@crs.org

Website - <https://sheltercluster.org/response/palestine>

Email Registration - [Shelter Cluster Mailing List Registry](#)

AGENDA

- General / National Update
- WB Updates
- Technical Update
- Displacement update from IOM NPM team
- Gaza Updates
- IM Update
- Discussion /Q&A / AOB

CONTEXTUAL / NATIONAL UPDATE

- Shelter situation in Gaza remain catastrophic
 - [Clothing distributions lessons learned](#)
 - Ceasefire preparation: JIMOC
 - IOM Common pipeline: [Catalogue of humanitarian items for partners](#)
 - Guidance: [Rapid building repairs as an Emergency Shelter Solution](#)
- WB:
 - WB needs assessment: Data collected and cleaned; First draft done (now review and incorporation of GIHA FDGs)
 - Emergency response and preparedness planning; Masafer Yatta possible mass demolition
- National:
 - [SC membership guidelines](#); [SAG TOR](#)
 - Advocacy remain priorities
 - HF; and ECHO HIP (12th August) consultation



PALESTINE
SHELTER CLUSTER

Coordinating Humanitarian Shelter and Settlements

WB UPDATE

WB UPDATES

Jenin and Tulkarem IDPs Assessment Analysis and Findings

Masafer Yatta at Imminent Risk of Mass Demolition and Forcible Displacement

- Masafer Yatta is a cluster of **13 communities** located in the South Hebron Hills.
- This area was designated as a firing zone (“Firing Zone 918”) by Israeli military.
- On **17 June 2025**, the Israeli military reaffirmed the use of “Firing Zone 918” for training, accompanied by a new directive enabling widespread demolitions.
- In parallel, the Israeli Civil Administration issued a directive allowing the retroactive dismissal of building permit applications, effectively paving the way for large-scale demolitions of Palestinian structures.
- These developments significantly heighten the risk of complete destruction and forcible displacement of the 13 Palestinian communities in Masafer Yatta.

WB UPDATES

Key Scenarios

Scenario 1: Gradual Escalation and Community-by-Community Displacement

Targeted demolition of homes and critical infrastructure.

Restricted access for humanitarian actors.

Increased settler violence.

Scenario 2: Mass Demolitions and Full Displacement

Forcible displacement of 200 households (approximately 1,200 people, including over 500 children).

Complete destruction of homes, infrastructure, and humanitarian installations.

Overall Humanitarian Impact

Shelter/NFI: Over 280 homes potentially destroyed, including 87 donor-funded residential structures.

Displacement: 200 households (1,200 individuals), including over 500 children.

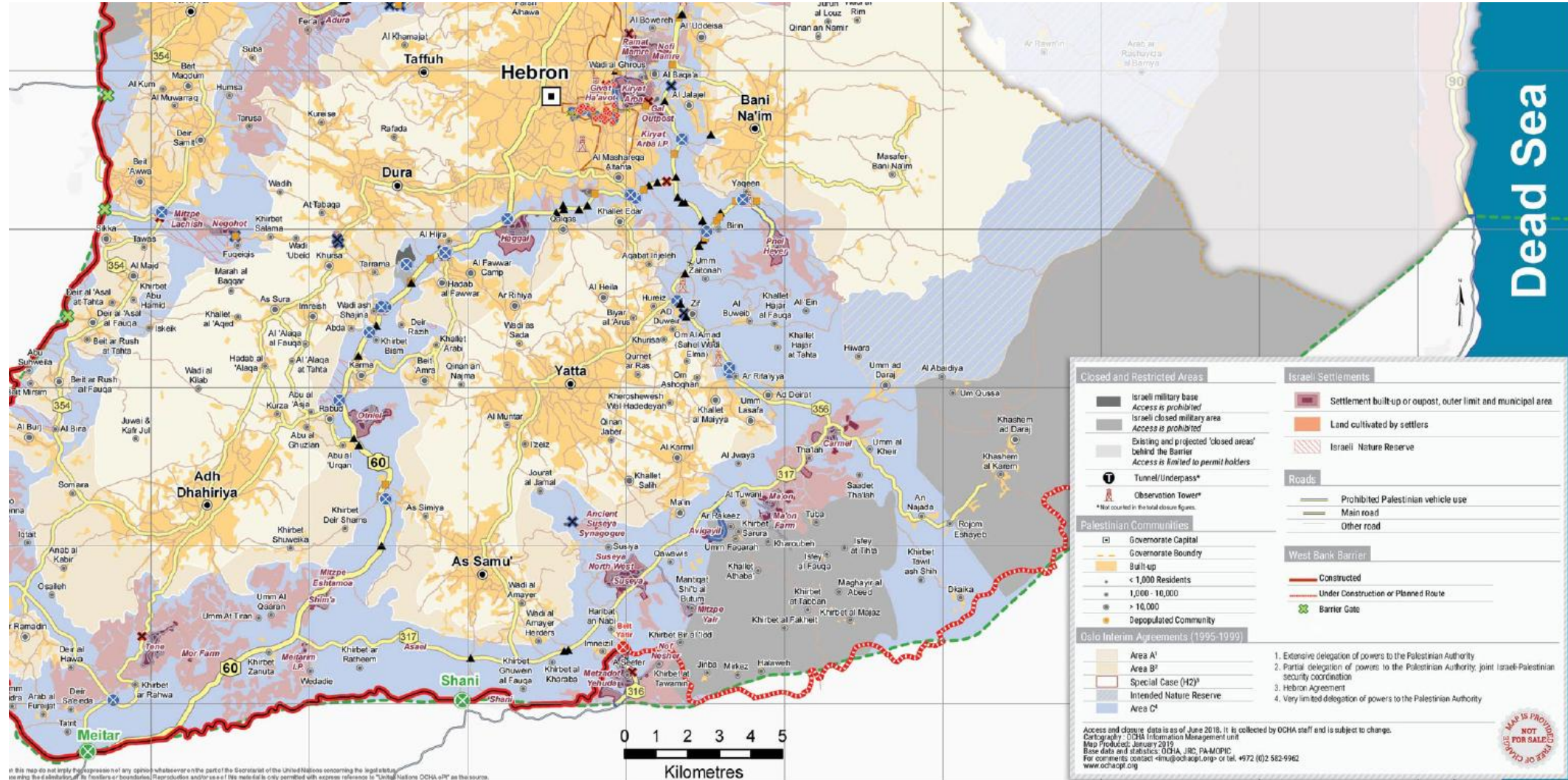
In addition to the destruction of homes, there is a serious risk to destruction of clinics, schools, WASH facilities and systems, energy sources, and livelihood-related structures, representing decades of intensive humanitarian investment and work in the area.

WB UPDATES

Shelter Cluster Preparedness and Response – As Part of ICCG Localized Plan

- **First and most important , collective advocacy to prevent mass demolition and displacement**, as part of a continuous strategy to counter attempts to uproot Palestinian presence in Area C.
- **Provision of NFIs and essential household materials**, including kitchen kits, mattresses, blankets, mats, dignity kits, etc...
- **Provision of safety and protective materials**, such as first aid kits and fire-fighting tools and supplies.
- **Provision of hand tools** (e.g., shovels, axes, buckets) to support rubble removal and site leveling for temporary shelter setup, including support for self-built shelter initiatives.
- **Provision of tarpaulins, plastic sheets, and timber pieces**, where applicable, to support communities initiating makeshift shelters.
- **Provision of cash assistance** for shelter and cave rehabilitation as a substitute for material delivery, especially where access restrictions exist and to avoid the confiscation or destruction of aid materials.

WB UPDATES



Closed and Restricted Areas	Israeli Settlements
Israeli military base Access is prohibited	Settlement built up or outpost, outer limit and municipal area
Israeli closed military area Access is prohibited	Land cultivated by settlers
Existing and projected 'closed areas' behind the Barrier Access is limited to permit holders	Israeli Nature Reserve
Tunnel/Underpass*	Roads
Observation Tower*	Prohibited Palestinian vehicle use
<small>*Not counted in the total closure figures.</small>	Main road
Palestinian Communities	Other road
Governorate Capital	West Bank Barrier
Governorate Boundary	Constructed
Built-up	Under Construction or Planned Route
< 1,000 Residents	Barrier Gate
1,000 - 10,000	
> 10,000	
Depopulated Community	
Oslo Interim Agreements (1995-1999)	
Area A ¹	
Area B ²	
Special Case (H2) ³	
Intended Nature Reserve	
Area C ⁴	

1. Extensive delegation of powers to the Palestinian Authority
2. Partial delegation of powers to the Palestinian Authority, joint Israeli-Palestinian security coordination
3. Hebron Agreement
4. Very limited delegation of powers to the Palestinian Authority

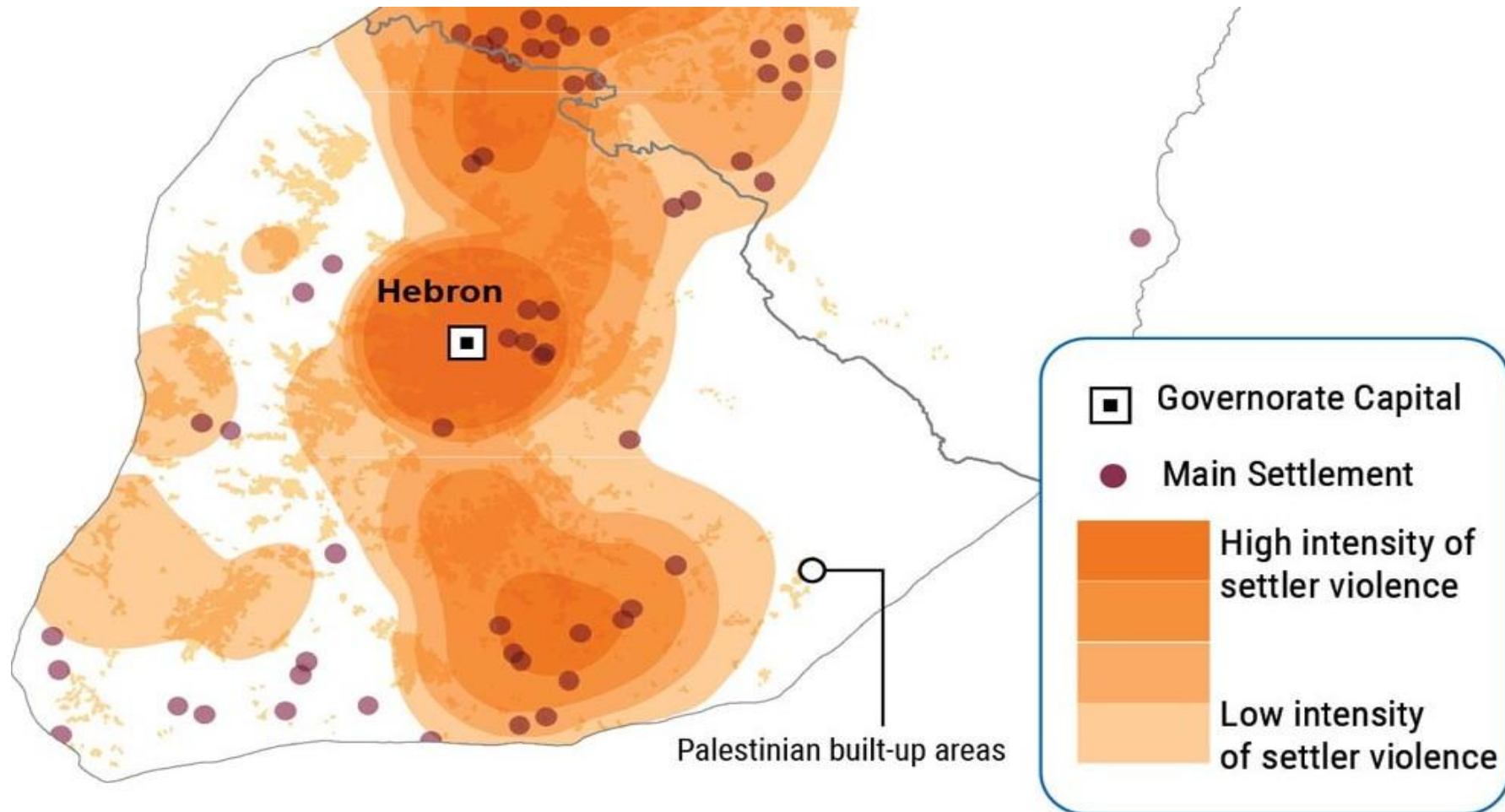
Access and closure data is as of June 2018. It is collected by OCHA staff and is subject to change.
Cartography: OCHA Information Management Unit
Map Produced: January 2019
Base data and statistics: OCHA, JRC, PA/MOPIC
For comments contact: info@ochaopt.org or tel: +972 (0)2 582-9962
www.ochaopt.org

MAP IS PROVIDED NOT FOR SALE

In this map do not imply the expression of any opinion whatsoever on the part of the Secretariat of the United Nations concerning the legal status, territorial boundaries or areas, or the extent of any territory, or the designation of its frontiers or boundaries. Reproduction and/or use of this material is only permitted with express reference to "United Nations OCHA" as the source.

WB UPDATES

Settler Violence intensity in Masafer Yatta – High





PALESTINE
SHELTER CLUSTER

Coordinating Humanitarian Shelter and Settlements

Technical Update

Technical Updates: Gaza

Local coping strategies group:

- Draft of documents (Arabic and English) were shared with group members for their final comments.
- Meeting scheduled for Thursday to discuss and aim to finalise the products.

Targeting and prioritisation:

- Two meetings held with Gaza SAG members.
- Gaza SAG members who had valuable comments from their experience with challenges and operational realities.
- Also being reviewed by the SMC.

Technical IEC:

- Meeting last week centered around agreeing what are the priorities.
- In conversation with the Debris Management WG.

Technical Updates: West Bank

Household level Assessment

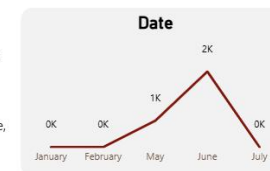
- Draft report completed.
- Gender briefing note to be jointly worked on by UN Women and Shelter Cluster to complement quantitative findings.

Rental Market Assessment

- Key informant interviews completed.
- Starting analysis of the interviews.

IDP ASSESSMENT

This dashboard presents insights from the **IDP Shelter Assessment**, a field-level survey conducted by the Ministry of Social Development, UNRWA, and humanitarian partners under the **Shelter Cluster**. The survey aims to assess the shelter conditions and needs of **internally displaced persons (IDPs)** in **West Bank**, Palestine, following displacement caused by hostilities.



2960
Total Surveyed
Households

96.18%
Currently Displaced

IDP displacement per governorate



Map and filled map visuals are disabled. To enable them, go to File > Options and settings > Options > Global > Security. [See details](#)





PALESTINE
SHELTER CLUSTER

Coordinating Humanitarian Shelter and Settlements

GAZA UPDATE

Overview of the situation in Gaza

1. Displacement

- **87.84% of Gaza** is currently within "no-go" zones or under displacement orders (*OCHA*)
- According to the Site Management Cluster (SMC), between 7 and 22 July, five displacement orders were issued across the Strip. Affected:
 - 140 makeshift sites , 2 scattered sites, 4 unknown sites
 - 22 non-UNRWA collective centers
 - 35 UNRWA collective centersTotal Individuals affected: 159,887
- The new evacuation order in the middle area and the evacuation order covering wide areas in the northern governorate was reaffirmed, indicate that probably two new axes are underway, separating Middle from the south and North from Gaza City.
- **Total displacement since 18 March to 22nd July: 762,593 individuals.**



Overview of the situation in Gaza

2. Shelter Conditions:

- The shelter situation in Gaza continues to deteriorate, with the gap between needs and response capacity growing rapidly each week. Field reports and partner observations consistently highlight **critical and unmet shelter needs**, particularly as **tents and makeshift shelters continue to deteriorate under harsh conditions**. Recent figures from the **Gaza Government Media Office** reveal the severity of the situation: **117,000 out of 135,000 tents** have completely deteriorated and are no longer suitable for living. **288,000 Palestinian families** are currently **without shelter or living in inadequate shelter conditions**.
- BLDA Remote assessment continued into the Middle Area, where an additional 43 displacement sites were surveyed. In the Middle Area, the most urgently needed items after food were identified as hygiene kits and household items, particularly bedding and kitchen sets. While some sites did report families with no shelter, the number of such cases was significantly lower compared to Gaza City



Current Shelter Partners' Response

3. Shelter Response: Between 8 July and 23 July

- During the reporting period, the Shelter Cluster received several requests for emergency shelter assistance that could not be met due to zero stock.
- ACTED&BLDA distributed 59 Emergency Shelter Kits (ESKs) to 59 families in Gaza City, technical assistance provided to support proper installation.
- **ACTED's distribution of clothing vouchers in the north has reached 3,550 out of the planned 7,200.** An assessment is ongoing in the south, planned distribution of 2,000 vouchers. Assessment has been **stopped due to the security situation and ongoing evacuation orders.**
- CRS launched a tender to procure Emergency Shelter Kits (ESKs) from the local market. Contractors will be selected soon, and the targeted sites were referred by one of the SMC partners and household assessment is ongoing.

GENERAL UPDATES

- **SAG meetings were held on 17 and 20 July**, and the **Shelter Cluster Gaza meeting took place on 13 July**.
-Targeting and Prioritization Document, developed by the Technical Working Group (TWG), was discussed in multiple meetings to gather broader input. Consultations were held with SAG members and partners, many of whom are inside Gaza. Their feedback was especially valuable, as it reflects a deeper understanding of the context, operational challenges, coordination gaps, and lessons learned from the field.
-Daily Reporting Tool: Discussion on a tool to facilitate **daily reporting during a potential ceasefire**, including updates on **stock levels, partner activities, and distributions** to enhance coordination and response tracking.
- **Cargo prioritization** remains focused on food, health, nutrition, chlorine, and hygiene items, with no approval yet for shelter materials.
- **Fuel**: current prioritization of fuel for critical activities: Ambulances, AVs, and machinery and equipment for Civil Defense (Rubble removal). A request was shared with shelter partners to update their required quantities of Fuel both in normal conditions as well as in case of life-saving/ critical activities.

GENERAL UPDATES

- **HF 3rd Reserve Allocation 2025 update**

- Track 2 – 48-Hour Response: US \$20 million held in readiness for rapid activation (\$18M for Gaza, \$2M for the West Bank). This track will pre-position funding with vetted, pre-cleared partners, enabling them to respond once access opens or conditions allow. Track 2 ensures we are poised to respond immediately to sudden changes – for example, if crossings open or new humanitarian corridors emerge.

- Concept Note Submission: Partners are requested to submit concise concept notes (~3 pages or equivalent). The deadline for concept note submission is 6 August 2025.

- Ongoing discussion to nominate members to participate in the HF Strategic Review Committee SRC for Shelter Projects.



PALESTINE
SHELTER CLUSTER

Coordinating Humanitarian Shelter and Settlements

IM UPDATE (Gaza)

IM UPDATES (Stock Status)

Available stock of key
shelter items in Gaza
(North and South), as of
[15 July 2025].



PALESTINE
SHELTER CLUSTER
Coordinating Humanitarian Shelter and Settlements

**"Nothing in stock... for
now!"**

IM UPDATES (Gap Analysis Result as of 15th of July)

Based on the number of people reached over the past six months and the number of people newly displaced during the same period, a thorough analysis—taking all relevant factors into account—indicates that a significant number of people still urgently require shelter assistance.

Emergency Shelter Items



1.37 M



AUGUST 2025

1.5 M



Household Items



1.4 M



1.5 M



IM UPDATES (Pipeline Information)



TENT



TARPAULIN

PLASTIC SHEET



MATTRESS

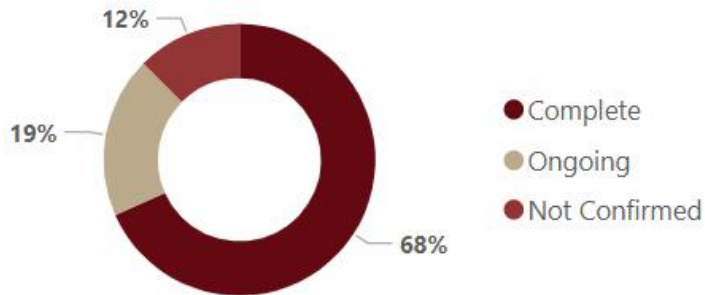
BLANKET

Items	Border country	Quantity of items
Tents	Israel	360
Tents	Egypt	8,922
Tents	Not Confirmed	8,993
Tents	Jordan	53,679
Total		71,954

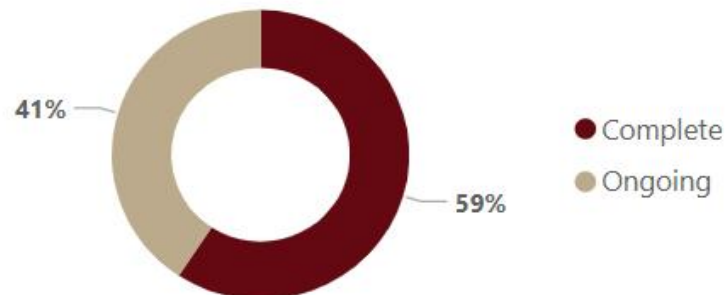
Items	Border country	Quantity of items
Sealing Off materials	locally procured	1,654
Sealing Off materials	Israel	2,000
Plastic Sheets (Transparent)	Jordan	2,016
Sealing Off materials	Egypt	12,665
Tarpaulin	via. Cyprus	15,380
Sealing Off materials	Jordan	39,230
Tarpaulin	Egypt	307,000
Tarpaulin	Jordan	506,315
Total		886,260

Items	Border country	Quantity of items
Bedding set	locally procured	500
Bedding set	Israel	1,130
Bedding set	Jordan	4,148
Bedding set	via. Cyprus	7,500
Bedding set	Egypt	8,438
Blankets	Israel	515,000
Mattresses	Jordan	607,258
Blankets	Jordan	669,266
Mattresses	Egypt	1,009,163
Blankets	Egypt	1,387,306
Total		4,209,709

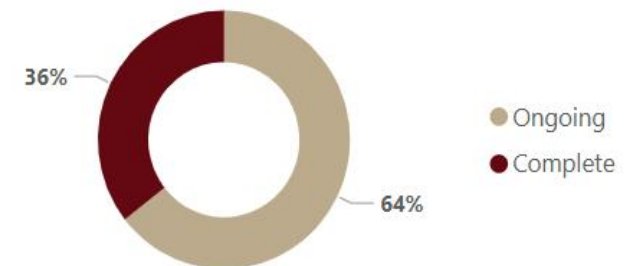
Item procurement status at the border



Item procurement status at the border



Item procurement status at the border



(Gaza - Government Media office)

- ◇ Approximately **223,000** housing units have been completely destroyed.
- ◇ Approximately **134,000** housing units have been severely damaged and are uninhabitable.
- ◇ Approximately **212,000** housing units have been partially damaged.
- ◇ **288,000** Palestinian families are currently without shelter.
- ◇ **117,000** tents out of a total **135,000** have deteriorated completely and are no longer suitable for living.



PALESTINE
SHELTER CLUSTER

Coordinating Humanitarian Shelter and Settlements

Discussion / Q&A / AOB

- **Upcoming meetings:**
 - Gaza Shelter Cluster meeting: 10:30 AM, 27th July
 - Gaza SAG meeting: 2:00 PM, 31st July
 - WB Shelter Cluster meeting: 10:00AM, 16th July
 - National SAG: 2:30PM 10 July
 - WB SAG meeting: 10AM, July (TBC)
- **Next National Shelter Cluster meeting: 1PM, 06th August**
 - Partner presentation?
- Fadi Acting National Coordinator from 26 July to 03 August.