

Northwest Shelter Cluster Workshop

21st and 22nd June

Cube Restaurant Bamenda, Cameroon



Shelter Cluster NWSW Cameroon
ShelterCluster.org
Coordinating Humanitarian Shelter

Overall Objective

- Improve Shelter Cluster analysis capacity to understand
 - Shelter Needs
 - Shelter Vulnerability
 - Shelter Outcomes



Specific Objectives

- Review existing needs assessment tools
 - Provide inputs and feedback for the next round of MSNA
 - Come up with a way of improving the Plan Shelter HH tool to have approved needs indicators for future assessments
 - Understand how information on markets shapes our information needs as a cluster
- Define Shelter Vulnerability in the context of the NWSW for beneficiary prioritization and selection
- Better determine the adequacy of our shelter response by coming up with standard outcome indicators and PDM tools to evaluate our response



Background

Shelter and Settlement Typologies Northwest



Setting	Settlement Scenario	Shelter	Structure	Roofs
Urban	Renting, Owner, Hosting, Squatting Public/Private	House Apartment Collective Shelter (rare)	Concrete, Cement, Sundried/Mudbrick	CGI, Thatch
Peri (Semi)-Urban	Renting, Owner, Hosting, Informal Settlements, Squatting Public/Private	House, Apartment, Makeshift Shelter Collective Shelter	Concrete is less than urban, Sundried/Mudbrick	CGI, Thatch
Rural	Owner, Hosting, Informal Settlements including settlements in the bush, Squatting Public/Private	House, Makeshift Shelter, Farm/Agricultural house or infrastructure	Bamboo, Thatch, Wood, Mudbrick	CGI, Thatch



@Global Shelter Cluster Kumbo damages in semi-urban area 2018



@COHESODEC burnt mudbrick Shelter in Bali

What do we need to know to improve our shelter response?

- What kind of questions?
- What indicators do we need to know?



MSNA (OCHA)

- Key informant Village Assessment
- Informed people from that village tell us about the general situation in shelter in their area in each village or site in the Northwest and Southwest
- Numbers are at best estimates



MSNA Settlement Scenarios

Information Needed	Question Text	Preconditions for Data Collection	Recommended Source of information	HNO Indicator it contributes to	Example of Visualization
Number of IDP HH that are self-settled and shelter type	Among the IDPs, how many are self-settled Shelter type of majority of displaced population who are self-settled	Presence of IDP households in village	Observe shelter conditions and types in locality Ask IDP leaders and member of the community	# of vulnerable IDP households in self settled who must receive Shelter kits	<p>IDP accomodation category:</p> <ul style="list-style-type: none"> IDP HH Self-Settled shelter or renting IDP HH in Host Family Accomodation

- Need to Update Settlement types and scenarios for IDPs



Shelter Cluster NWSW Cameroon

ShelterCluster.org

Coordinating Humanitarian Shelter

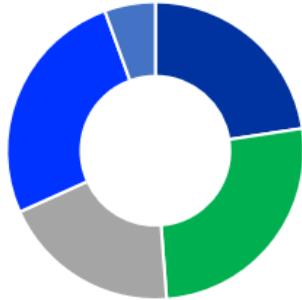
MSNA: Shelter Types

Information Needed	Question Text	Preconditions for Data Collection	Recommended Source of information	HNO Indicator it contributes to	Example of Visualization
Number of IDP HH that are living with host families and shelter type	Among the IDPs, how many live with a host family (same house or property) Shelter type of majority of displaced population who live with host family	Presence of IDP households in village	Observe shelter conditions and type in village Ask IDP leaders and member of the community		<p>IDP household settlement type</p> <p>Legend: IDP HH Self-Settled shelter (dark blue), IDP HH in Host Family Accommodation (medium blue), IDP HH in Rental Accommodation (light blue)</p>

- Need to Update Shelter Types to not confuse with settlement scenarios



MSNA: Components of Makeshift Shelter

Information Needed	Question Text	Preconditions for Data Collection	Recommended Source of information	HNO Indicator it contributes to	Example of Visualization												
Number of IDP households in makeshift shelters and primary materials from which makeshift shelters are made of	Among the IDPs, how many live in makeshift shelters What are the TOP materials from which makeshift shelters are made of?	Presence of IDP households in village	Observe shelter conditions and type in village Ask IDP leaders and member of the community	# of vulnerable IDP households to be assisted with core relief items	<p>Primary materials from which makeshift materials are made up of</p> <p>■ Tarpaulin ■ Wood ■ Plastic ■ Straw ■ Others</p>  <table border="1"> <caption>Primary materials from which makeshift materials are made up of</caption> <thead> <tr> <th>Material</th> <th>Color</th> </tr> </thead> <tbody> <tr> <td>Tarpaulin</td> <td>Dark Blue</td> </tr> <tr> <td>Wood</td> <td>Green</td> </tr> <tr> <td>Plastic</td> <td>Grey</td> </tr> <tr> <td>Straw</td> <td>Light Blue</td> </tr> <tr> <td>Others</td> <td>Medium Blue</td> </tr> </tbody> </table>	Material	Color	Tarpaulin	Dark Blue	Wood	Green	Plastic	Grey	Straw	Light Blue	Others	Medium Blue
Material	Color																
Tarpaulin	Dark Blue																
Wood	Green																
Plastic	Grey																
Straw	Light Blue																
Others	Medium Blue																



Shelter Cluster NWSW Cameroon

ShelterCluster.org

Coordinating Humanitarian Shelter

MSNA: Conditions of Makeshift Shelters

Information Needed	Question Text	Preconditions for Data Collection	Recommended Source of information	HNO Indicator it contributes to	Example of Visualization																																										
State of makeshift shelters	For the displaced populations living in makeshift shelters, in which state are the makeshift shelters?	There are households living in makeshift shelters	Observe shelter conditions in village Ask IDP leaders and member of the community	# HH living in damaged shelters to be assisted	<p>Condition of makeshift shelters:</p> <table border="1"> <caption>Condition of makeshift shelters by location</caption> <thead> <tr> <th>Location</th> <th>Good condition</th> <th>Partially damaged</th> </tr> </thead> <tbody> <tr><td>Moungo</td><td>100%</td><td>0%</td></tr> <tr><td>Wouri</td><td>100%</td><td>0%</td></tr> <tr><td>Boyo</td><td>100%</td><td>0%</td></tr> <tr><td>Bui</td><td>100%</td><td>0%</td></tr> <tr><td>Donga-Mantung</td><td>100%</td><td>0%</td></tr> <tr><td>Menchum</td><td>100%</td><td>0%</td></tr> <tr><td>Mezam</td><td>100%</td><td>0%</td></tr> <tr><td>Ngo-Ketunjia</td><td>100%</td><td>0%</td></tr> <tr><td>Fako</td><td>100%</td><td>0%</td></tr> <tr><td>Lebialem</td><td>100%</td><td>0%</td></tr> <tr><td>Manyu</td><td>~85%</td><td>~15%</td></tr> <tr><td>Meme</td><td>~90%</td><td>~10%</td></tr> <tr><td>Ndian</td><td>100%</td><td>0%</td></tr> </tbody> </table>	Location	Good condition	Partially damaged	Moungo	100%	0%	Wouri	100%	0%	Boyo	100%	0%	Bui	100%	0%	Donga-Mantung	100%	0%	Menchum	100%	0%	Mezam	100%	0%	Ngo-Ketunjia	100%	0%	Fako	100%	0%	Lebialem	100%	0%	Manyu	~85%	~15%	Meme	~90%	~10%	Ndian	100%	0%
Location	Good condition	Partially damaged																																													
Moungo	100%	0%																																													
Wouri	100%	0%																																													
Boyo	100%	0%																																													
Bui	100%	0%																																													
Donga-Mantung	100%	0%																																													
Menchum	100%	0%																																													
Mezam	100%	0%																																													
Ngo-Ketunjia	100%	0%																																													
Fako	100%	0%																																													
Lebialem	100%	0%																																													
Manyu	~85%	~15%																																													
Meme	~90%	~10%																																													
Ndian	100%	0%																																													

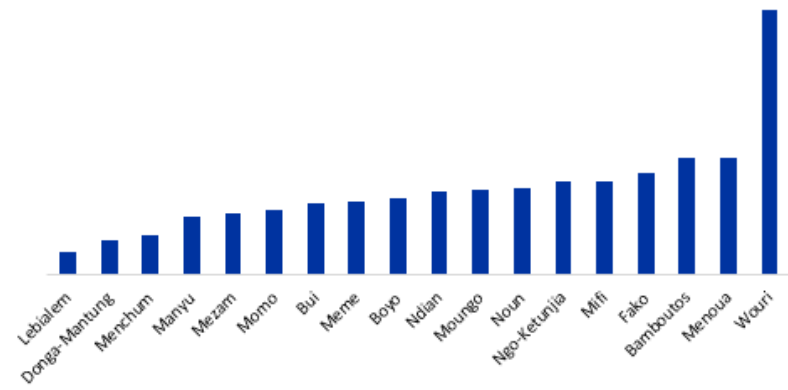


Shelter Cluster NWSW Cameroon

ShelterCluster.org

Coordinating Humanitarian Shelter

MSNA: Rental Conditions

Information Needed	Question Text	Preconditions for Data Collection	Recommended Source of information	HNO Indicator it contributes to	Example of Visualization																																						
Average cost of rental shelter	For displaced persons who are renting, how much on an average do the MAJORITY pay per month?	IDPs must be living in rental accomodation	Observe shelter conditions in site Ask IDP leaders and member of the community	# HH to be assisted with shelter rental subsidies	<p data-bbox="1159 564 1777 592">Average cost (FCFA) of IDP rented shelter by division</p>  <table border="1" data-bbox="1062 642 1854 1028"> <caption>Average cost (FCFA) of IDP rented shelter by division</caption> <thead> <tr> <th>Division</th> <th>Average Cost (FCFA)</th> </tr> </thead> <tbody> <tr><td>Lebialem</td><td>~100</td></tr> <tr><td>Donga-Mantung</td><td>~150</td></tr> <tr><td>Menchum</td><td>~200</td></tr> <tr><td>Manyu</td><td>~250</td></tr> <tr><td>Mezam</td><td>~280</td></tr> <tr><td>Momo</td><td>~300</td></tr> <tr><td>Bui</td><td>~350</td></tr> <tr><td>Meme</td><td>~380</td></tr> <tr><td>Boyo</td><td>~400</td></tr> <tr><td>Ndian</td><td>~420</td></tr> <tr><td>Moungo</td><td>~450</td></tr> <tr><td>Noun</td><td>~480</td></tr> <tr><td>Ngo-Ketunjia</td><td>~500</td></tr> <tr><td>Mifi</td><td>~550</td></tr> <tr><td>Fako</td><td>~600</td></tr> <tr><td>Bamboos</td><td>~650</td></tr> <tr><td>Menoua</td><td>~680</td></tr> <tr><td>Wouri</td><td>~850</td></tr> </tbody> </table>	Division	Average Cost (FCFA)	Lebialem	~100	Donga-Mantung	~150	Menchum	~200	Manyu	~250	Mezam	~280	Momo	~300	Bui	~350	Meme	~380	Boyo	~400	Ndian	~420	Moungo	~450	Noun	~480	Ngo-Ketunjia	~500	Mifi	~550	Fako	~600	Bamboos	~650	Menoua	~680	Wouri	~850
Division	Average Cost (FCFA)																																										
Lebialem	~100																																										
Donga-Mantung	~150																																										
Menchum	~200																																										
Manyu	~250																																										
Mezam	~280																																										
Momo	~300																																										
Bui	~350																																										
Meme	~380																																										
Boyo	~400																																										
Ndian	~420																																										
Moungo	~450																																										
Noun	~480																																										
Ngo-Ketunjia	~500																																										
Mifi	~550																																										
Fako	~600																																										
Bamboos	~650																																										
Menoua	~680																																										
Wouri	~850																																										



MSNA: # of IDPs in Public Buildings

Information Needed	Question Text	Preconditions for Data Collection	Recommended Source of information	HNO Indicator it contributes to	Example of Visualization
Households living in public settlements	Among the IDPs, how many live in public buildings? How many of such public buildings host less than 20 IDP HH?	Presence of IDP households in village	Observe shelter conditions and type in village Ask IDP leaders and member of the community	# of vulnerable IDP households to be assisted with core relief items	<p>Public building category: percentage by total number</p> <ul style="list-style-type: none"> Church Other public building Government building School Mosque



Shelter Cluster NWSW Cameroon

ShelterCluster.org

Coordinating Humanitarian Shelter

MSNA: State of Returnee Shelters

Information Needed	Question Text	Preconditions for Data Collection	Recommended Source of information	HNO Indicator it contributes to	Example of Visualization																																																								
State of returnee shelters and level of damage	Are shelters to which returnees have come back to damaged? If yes, in which state are the majority of these shelters?	Presence of returnee households in village	Observe shelter conditions in village Ask member(s) of the community	# HH living in damaged shelters to be assisted	<p>State of majority of returnee shelters in assessed villages</p> <table border="1"> <caption>Data for State of majority of returnee shelters in assessed villages</caption> <thead> <tr> <th>Village</th> <th>Good condition</th> <th>Partially damaged</th> <th>Completely damaged</th> </tr> </thead> <tbody> <tr><td>Boyo</td><td>0</td><td>100</td><td>0</td></tr> <tr><td>Bui</td><td>5</td><td>95</td><td>0</td></tr> <tr><td>Donga-Martung</td><td>5</td><td>95</td><td>0</td></tr> <tr><td>Menchum</td><td>5</td><td>95</td><td>0</td></tr> <tr><td>Mezam</td><td>5</td><td>95</td><td>0</td></tr> <tr><td>Momo</td><td>5</td><td>95</td><td>0</td></tr> <tr><td>Ngo-Ketunjia</td><td>0</td><td>100</td><td>0</td></tr> <tr><td>Fako</td><td>15</td><td>85</td><td>0</td></tr> <tr><td>Kupe-Muanenguba</td><td>5</td><td>95</td><td>0</td></tr> <tr><td>Lebialem</td><td>0</td><td>100</td><td>0</td></tr> <tr><td>Manyu</td><td>10</td><td>90</td><td>0</td></tr> <tr><td>Meme</td><td>0</td><td>95</td><td>5</td></tr> <tr><td>Ndian</td><td>5</td><td>95</td><td>0</td></tr> </tbody> </table>	Village	Good condition	Partially damaged	Completely damaged	Boyo	0	100	0	Bui	5	95	0	Donga-Martung	5	95	0	Menchum	5	95	0	Mezam	5	95	0	Momo	5	95	0	Ngo-Ketunjia	0	100	0	Fako	15	85	0	Kupe-Muanenguba	5	95	0	Lebialem	0	100	0	Manyu	10	90	0	Meme	0	95	5	Ndian	5	95	0
Village	Good condition	Partially damaged	Completely damaged																																																										
Boyo	0	100	0																																																										
Bui	5	95	0																																																										
Donga-Martung	5	95	0																																																										
Menchum	5	95	0																																																										
Mezam	5	95	0																																																										
Momo	5	95	0																																																										
Ngo-Ketunjia	0	100	0																																																										
Fako	15	85	0																																																										
Kupe-Muanenguba	5	95	0																																																										
Lebialem	0	100	0																																																										
Manyu	10	90	0																																																										
Meme	0	95	5																																																										
Ndian	5	95	0																																																										

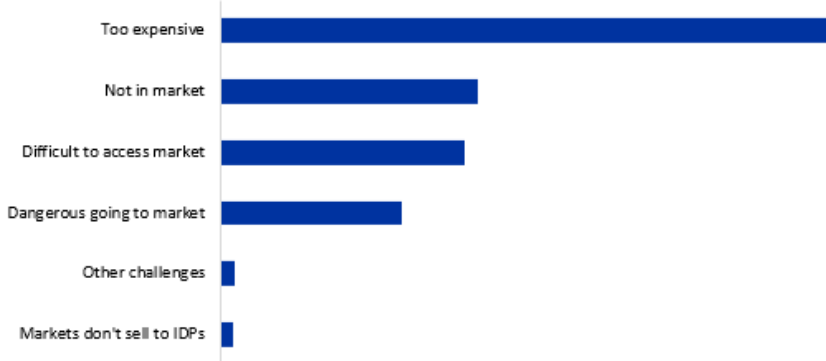


MSNA: Accessibility of NFIs

D	F	G	H	I																																																																									
Question Text	Preconditions for Data Collection	Recommended Source of information	HNO Indicator it contributes to	Example of Visualization	Exam																																																																								
<p>In the past month, which of the following items have the majority of displaced populations had access to?</p>	<p>Village not deserted</p>	<p>Ask IDP leaders and IDPs</p>	<p># of vulnerable IDP households to be assisted with core relief items</p>	<p>Degree of accessibility of some NFI items in villages assessed</p> <table border="1"> <caption>Approximate data from the NFI accessibility chart</caption> <thead> <tr> <th>Item</th> <th>Everyone</th> <th>Most of the people</th> <th>Few people</th> <th>Half the people</th> <th>Nearly no one</th> </tr> </thead> <tbody> <tr> <td>Soap</td> <td>High</td> <td>Low</td> <td>Low</td> <td>Low</td> <td>Low</td> </tr> <tr> <td>Mosqu...</td> <td>Low</td> <td>Low</td> <td>High</td> <td>Low</td> <td>Low</td> </tr> <tr> <td>Fuel</td> <td>High</td> <td>Low</td> <td>Low</td> <td>Low</td> <td>Low</td> </tr> <tr> <td>Washi...</td> <td>Low</td> <td>Low</td> <td>High</td> <td>Low</td> <td>Low</td> </tr> <tr> <td>Toothb...</td> <td>High</td> <td>Low</td> <td>Low</td> <td>Low</td> <td>Low</td> </tr> <tr> <td>Jerry...</td> <td>Low</td> <td>Low</td> <td>High</td> <td>Low</td> <td>Low</td> </tr> <tr> <td>Mats</td> <td>Low</td> <td>Low</td> <td>High</td> <td>Low</td> <td>Low</td> </tr> <tr> <td>Blankk...</td> <td>Low</td> <td>Low</td> <td>High</td> <td>Low</td> <td>Low</td> </tr> <tr> <td>Cookin...</td> <td>High</td> <td>Low</td> <td>Low</td> <td>Low</td> <td>Low</td> </tr> <tr> <td>Bucket</td> <td>High</td> <td>Low</td> <td>Low</td> <td>Low</td> <td>Low</td> </tr> <tr> <td>Hand...</td> <td>Low</td> <td>Low</td> <td>High</td> <td>Low</td> <td>Low</td> </tr> </tbody> </table>	Item	Everyone	Most of the people	Few people	Half the people	Nearly no one	Soap	High	Low	Low	Low	Low	Mosqu...	Low	Low	High	Low	Low	Fuel	High	Low	Low	Low	Low	Washi...	Low	Low	High	Low	Low	Toothb...	High	Low	Low	Low	Low	Jerry...	Low	Low	High	Low	Low	Mats	Low	Low	High	Low	Low	Blankk...	Low	Low	High	Low	Low	Cookin...	High	Low	Low	Low	Low	Bucket	High	Low	Low	Low	Low	Hand...	Low	Low	High	Low	Low	
Item	Everyone	Most of the people	Few people	Half the people	Nearly no one																																																																								
Soap	High	Low	Low	Low	Low																																																																								
Mosqu...	Low	Low	High	Low	Low																																																																								
Fuel	High	Low	Low	Low	Low																																																																								
Washi...	Low	Low	High	Low	Low																																																																								
Toothb...	High	Low	Low	Low	Low																																																																								
Jerry...	Low	Low	High	Low	Low																																																																								
Mats	Low	Low	High	Low	Low																																																																								
Blankk...	Low	Low	High	Low	Low																																																																								
Cookin...	High	Low	Low	Low	Low																																																																								
Bucket	High	Low	Low	Low	Low																																																																								
Hand...	Low	Low	High	Low	Low																																																																								

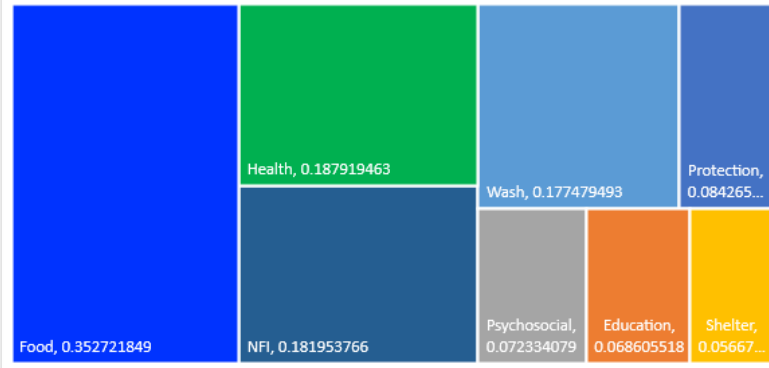


MSNA: NFI Access Challenges

Information Needed	Question Text	Preconditions for Data Collection	Recommended Source of information	HNO Indicator it contributes to	Example of Visualization														
Challenges in accessing NFI items	What challenges do displaced people face in accessing these materials?	Village not deserted	Ask IDP leaders and IDPs		<p data-bbox="1219 554 1750 572">NFI items access challenge: percentage by assessed villages</p>  <table border="1" data-bbox="1045 601 1875 958"> <caption>NFI items access challenge: percentage by assessed villages</caption> <thead> <tr> <th>Challenge</th> <th>Percentage</th> </tr> </thead> <tbody> <tr> <td>Too expensive</td> <td>85%</td> </tr> <tr> <td>Not in market</td> <td>45%</td> </tr> <tr> <td>Difficult to access market</td> <td>40%</td> </tr> <tr> <td>Dangerous going to market</td> <td>35%</td> </tr> <tr> <td>Other challenges</td> <td>5%</td> </tr> <tr> <td>Markets don't sell to IDPs</td> <td>5%</td> </tr> </tbody> </table>	Challenge	Percentage	Too expensive	85%	Not in market	45%	Difficult to access market	40%	Dangerous going to market	35%	Other challenges	5%	Markets don't sell to IDPs	5%
Challenge	Percentage																		
Too expensive	85%																		
Not in market	45%																		
Difficult to access market	40%																		
Dangerous going to market	35%																		
Other challenges	5%																		
Markets don't sell to IDPs	5%																		



MSNA: Assistance Received

Information Needed	Question Text	Response Options	Preconditions for Data Collection	Recommended Source of information	Example of Visualization																		
Assistance provided	What kind of assistance have displaced persons received so far, from who and when?	None; WASH support; Education support; Psychosocial support; Shelter support; Protection support; Health support; NFI support; Food support	Presence of displaced persons in the village	Direct observation around village Talk to IDPs, IDP leaders and Community members	<p>Assistance received: percentage by villages assessed</p>  <table border="1"> <caption>Assistance received: percentage by villages assessed</caption> <thead> <tr> <th>Category</th> <th>Percentage</th> </tr> </thead> <tbody> <tr> <td>Food</td> <td>0.352721849</td> </tr> <tr> <td>Health</td> <td>0.187919463</td> </tr> <tr> <td>Wash</td> <td>0.177479493</td> </tr> <tr> <td>Protection</td> <td>0.084265...</td> </tr> <tr> <td>NFI</td> <td>0.181953766</td> </tr> <tr> <td>Psychosocial</td> <td>0.072334079</td> </tr> <tr> <td>Education</td> <td>0.068605518</td> </tr> <tr> <td>Shelter</td> <td>0.05667...</td> </tr> </tbody> </table>	Category	Percentage	Food	0.352721849	Health	0.187919463	Wash	0.177479493	Protection	0.084265...	NFI	0.181953766	Psychosocial	0.072334079	Education	0.068605518	Shelter	0.05667...
Category	Percentage																						
Food	0.352721849																						
Health	0.187919463																						
Wash	0.177479493																						
Protection	0.084265...																						
NFI	0.181953766																						
Psychosocial	0.072334079																						
Education	0.068605518																						
Shelter	0.05667...																						



MSNA: Needs

Information Needed	Question Text	Response Options	Preconditions for Data Collection	Recommended Source of information	Example of Visualization																				
First top need	What is the first top need for which urgent assistance is needed in this village?	Drinking water; Hygiene and sanitation; Protection (case management); Shelter; Health services; Education; Access to farming tools/materials; Access to food; Non-Food Items	Presence of displaced persons in the village	Direct observation around village Talk to IDPs, IDP leaders, NGOs and Community members	<p>First top need: percentage by assessed villages</p> <table border="1"> <caption>First top need: percentage by assessed villages</caption> <thead> <tr> <th>Need Category</th> <th>Percentage (Estimated)</th> </tr> </thead> <tbody> <tr> <td>Drinking water</td> <td>45%</td> </tr> <tr> <td>Health</td> <td>35%</td> </tr> <tr> <td>Food</td> <td>30%</td> </tr> <tr> <td>Protection</td> <td>28%</td> </tr> <tr> <td>Education</td> <td>25%</td> </tr> <tr> <td>Farm tools</td> <td>15%</td> </tr> <tr> <td>NFI</td> <td>12%</td> </tr> <tr> <td>Shelter</td> <td>10%</td> </tr> <tr> <td>Hygiene and sanitation</td> <td>5%</td> </tr> </tbody> </table>	Need Category	Percentage (Estimated)	Drinking water	45%	Health	35%	Food	30%	Protection	28%	Education	25%	Farm tools	15%	NFI	12%	Shelter	10%	Hygiene and sanitation	5%
Need Category	Percentage (Estimated)																								
Drinking water	45%																								
Health	35%																								
Food	30%																								
Protection	28%																								
Education	25%																								
Farm tools	15%																								
NFI	12%																								
Shelter	10%																								
Hygiene and sanitation	5%																								



Indicators from the last version of the MSNA Questionnaire that contribute to the HNO (Humanitarian Needs Overview)

- # of vulnerable IDP households in self settled shelter who must receive shelter kits
- # of HH to be assisted with shelter rental subsidies
- # of vulnerable IDP households to be assisted with core relief items
- # of HH living in damaged shelters to be assisted



Shelter Household Assessment



Reviewing the Plan Household Tool



Household Tool Enables us to be able to project findings on a certain group of the population



Reviewing the indicators that can help us evaluate the needs of a shelter and the vulnerability and severity of needs



Shelter Cluster NWSW Cameroon
ShelterCluster.org
Coordinating Humanitarian Shelter

Household Assessment

- A sample is formed and random households are selected to be representative of a certain geographical area
- Enables us to make projections on an entire group without having to survey everyone (census)
- Enables us to also make conclusions on shelter types and conditions thus better informing our strategy
- Enables us to ask a series of questions that enables us to form proxy indicators and analyse indicators together to come up with severity



Household composition

- Status of respondent: IDP, returnee, non-displaced
- Household Composition- age, gender
- Vulnerabilities
- IDPs place of origin



Shelter and Settlement Types

- % of people per shelter type
- % of people whose shelters are made of certain material
- % of people per tenure types
- % of people at risk of eviction per type of shelter



Damages



Humanitarian Nature of Shelter Interventions

- Presence of the owner of the house prior to any interventions
- Nature of damages collected in clear way through often non-technical enumerators
- Length of time that the damaged shelter has gone without any intervention
- Break the damages by the shelter's attributes
 - Roofs
 - Walls
 - Windows
 - Doors



Shelter Cluster NWSW Cameroon

ShelterCluster.org

Coordinating Humanitarian Shelter

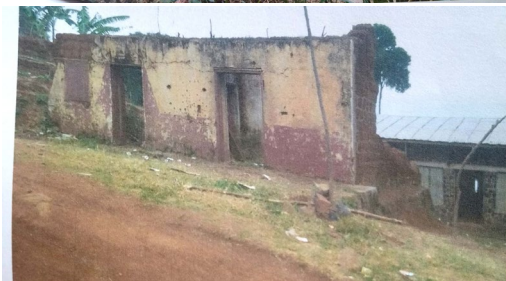
Roof Damage (Proposed Categories)

- Minor Damage – Up to 30% of the roof is impacted and there is an open space where water may lead and air may pass
- Moderate Damage- Up to 50% of of the roof is impacted or there are many holes where rain/leaks or air may pass
- Sever Damage – there are many holes in the roof (up to 95%) or the roof is collapsing)
- Destroyed the roof is completely missing)



Walls Damaged

- Minor Damages- a few cracks in the walls and/or bullet holes
- Moderate Damages – holes in many parts of the walls that you can see through and/or cracks in the columns
- Severe Damage- Large holes in many parts of the walls that you can see through, major cracks in some columns
- Walls completely destroyed



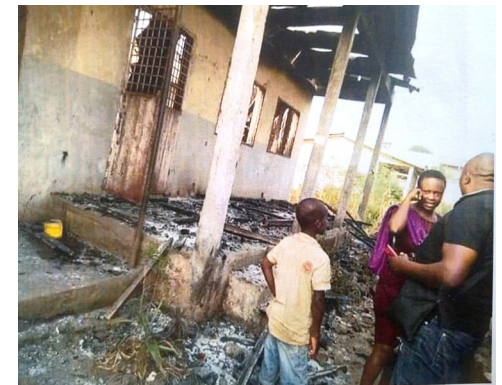
Shelter Cluster NWSW Cameroon

ShelterCluster.org

Coordinating Humanitarian Shelter

Windows

- Minor Damage- only a few windows and glasses are impacted and mostly intact
- Much glass is shattered and several windows are broken
- Many windows are damaged or fully destroyed (leaving many parts of the shelter with openings)



Doors

- Minor damages (a few bullet holes, still possible to lock the door at night)
- Moderate damage (major holes able to stick hand through and water and air able to permeate)
- Severe damage (door is completely destroyed and ability to lock and close the door is compromised)



WASH Indicators cross-cutting with shelter

- # of people (men/women) per latrine
- # of people (men/women) per handwashing facility
- # of people (men/women/ per shower



NFIs

- How does lack of items impact housing needs?
- Should we rank items? Which items contribute to ability to cook, be warm, sleep, etc.



Markets

- Plan covered availability of items in the market
- What about prices in the markets? How could that information be analysed together with average income and support or not support monetized approaches for improved NFI or shelter outcomes?



Putting it together

- How are all these indicators evaluated together to come up with a severity score per shelter?
 - Each indicator choice is assigned a score with lower number being the worst and higher number being better (example house would be 6, apartment 5, collective shelter 4, agricultural infra 3, makeshift shelter 2, no shelter 1)
 - All indicators would be analysed to assess the adequacy of the shelter and a ranking would be assessed across several categories for example:
 - Minor Inadequacies
 - Moderate Inadequacies
 - Severe Inadequacies



Prior to this step and entering into Shelter Vulnerability and Score Carding

- Review the Plan Household assessment corrected
- Correct any of the choices to make them in line with the Shelter Cluster strategy
- Propose to add any questions that you would like to know from a household about their shelter conditions and their coping strategies without shelter interventions
- How can the Shelter Cluster Photo tool also help in showing shelter needs and conditions?
- Propose a ranking for shelter and nfi severities qualitatively



NRC Rental Market Tool

- Presentation



Shelter Cluster NWSW Cameroon
ShelterCluster.org
Coordinating Humanitarian Shelter

Score Card Approach

- Review of Score Card draft from 2019
- Presentation by Caritas and UNHCR on their Identification tool
- What do we need to revise and include as a common cluster score card for beneficiary selection?












How do we measure the outcome of the work we are doing

- 5W tool – currently measuring output of our activities and a bit of outcome with the photo submission

Shelter Cluster NWSW Cameroon

Specifications of Shelter Kit

Item	Photo	Description	Units	Status
Tarpaulin		Plastic Tarpaulin Width: 4 m x 5m (Area: 20m ²) Weight: 170g/m ² +/- 5%, plus 10% for the reinforcement bands under ISO 3801 UV Resistance: 1500 Hours under ISO 1421 Tear Strength : minimum 100 N both directions (BS 4303 wing tear or equivalent) or under ISO 4674 (A2) Reinforcement eyelets: Provided with aluminum eyelets or equivalent on four sheet sides at the single sheets at 100 cm +/-5cm centre to centre, providing very strong fixation points.	2	Approved for both regions
Rope		Polyester rope, 12mm diameter, 50 meters in roll.	1	Approved for both regions
Hoe		A hoe is useful for preparing the foundation of the land where the shelter will be built	1	Banned in the NW
Pickaxe		Also used to support establishing the foundation of the shelter and for breaking hard ground where the shelter will be installed.	1	Banned in the NW
Shovel		Helps in digging and preparing the foundation where the emergency shelter will be installed. Helpful in the rainy season to dig trenches to prevent water draining into the shelter.	1	Banned in the NW
Nails		1 kg 3 inch (75 mm) nails in a package. Helps seal nails to fixtures.	1 package	Banned in the NW

Item	Photo	Description	Units	Status
Hammer		A hammer is essential for hammering the nails into place and for fixing the tarpaulins to wooden poles or for fixing it to a roof to cover any openings.	1	Banned in the NW
Handsaw		Needed for cutting wood to the required size when constructing an emergency shelter structure.	1	Banned in the NW
Wooden Poles		Wooden or bamboo pole (0.04 x 0.8 x 6 m) - 4 such poles would be needed to set up the minimum emergency shelter in informal settlements	4	Decision taken by the Shelter Cluster in 2019 to not include them as part of the distribution due to the fact that bamboo and wood are found in plenty throughout the region and it would cause further harm economically and environmentally to procure and distribute



Shelter Cluster NWSW Cameroon
ShelterCluster.org
Coordinating Humanitarian Shelter

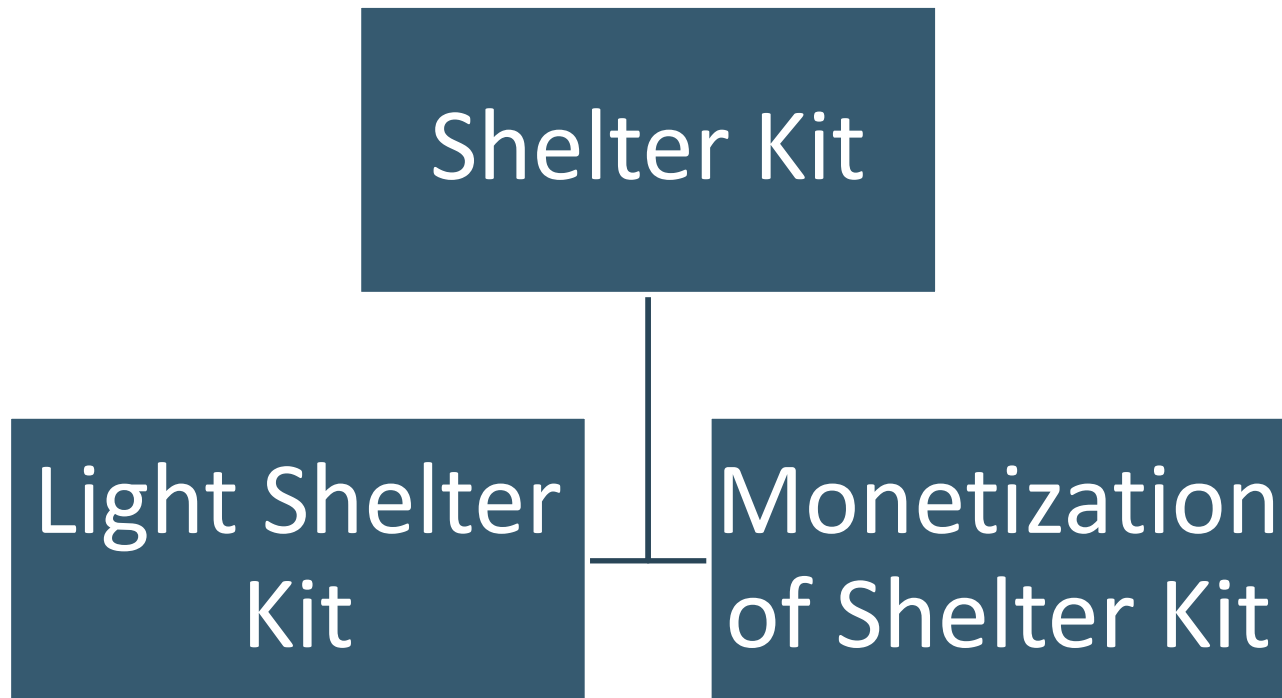
31-May-22

MINIMUM NFI KIT				
DESCRIPTION	Units / kit	Comments	Price per unit	
Synthetic sleeping mats (plastic), tear proof and water impervious, 200 x 200 cm.	2		2,250.00 XAF	4,500.00 XAF
Blanket, fleece, light thermal resistance, 150 x 200 cm.	2		9,500.00 XAF	19,000.00 XAF
Mosquito nets, long-lasting insecticidal nets, rectangular large, 160 x 180 x 150 cm	2		5,000.00 XAF	10,000.00 XAF
Stainless steel/aluminum cooking pot with handles and lid, 5 l.	1		7,250.00 XAF	7,250.00 XAF
Stainless steel/aluminum cooking pot with handles and lid, 10 l.	1		10,500.00 XAF	10,500.00 XAF
Stainless steel plates (deep), diam. 22cm.	6		275.00 XAF	1,650.00 XAF
Plastic cups with handle, max. 0.5 l.	7		175.00 XAF	1,225.00 XAF
Plastic jar with lid for drinking water, 2 l.	1		700.00 XAF	700.00 XAF
Stainless steel serving spoon, 35 ml.	1		900.00 XAF	900.00 XAF
Stainless steel spoons, soup, 10 ml.	6		1,250.00 XAF	7,500.00 XAF
Plastic basin, medium size, 7 l.	1		850.00 XAF	850.00 XAF
Jerry can, food grade LDPE, suitable for drinking water, rigid, screw cap. Light colour only (white, yellow), UV treated for long-term outdoor use, 20 l.	2	Preferably not the collapsible design	1,250.00 XAF	2,500.00 XAF
Heavy duty plastic bucket, without lid, 15 l.	1	Laundry	5,500.00 XAF	5,500.00 XAF
"Savo" soap bar, 250g.	6	Laundry + dishes	225.00 XAF	1,350.00 XAF
Big "Baco" bag, polypropylene bag	1	Big enough for kit transportation	1,750.00 XAF	1,750.00 XAF
Weatherproof and shockproof solar lamp / charger.	1		7,250.00 XAF	7,250.00 XAF
				82,425.00 XAF



Shelter Cluster NWSW Cameroon
ShelterCluster.org
Coordinating Humanitarian Shelter

Shelter Kits



How as a Shelter Cluster do we maintain our accountability to the crisis affected to make sure that the shelter response is achieving a shelter objective?



Shelter Kit Guidelines

- Given the current ban on metallic items, discuss amongst your group the Shelter Kit Guidelines of the Cluster
- Can we answer the question: # of shelters built or repaired with the shelter kits we are distributing?
- Should we advocate for improvements on the shelter kits based on what we know on the outcome of this assistance so far?
- What are people in need doing when our shelter assistance is not reaching them? How are they sheltering themselves?
- What kind of technical assistance should be provided by cluster partners to maintain accountability to our beneficiaries? How do we make sure this is happening?
 - Checklist?
 - Photos of the shelters?



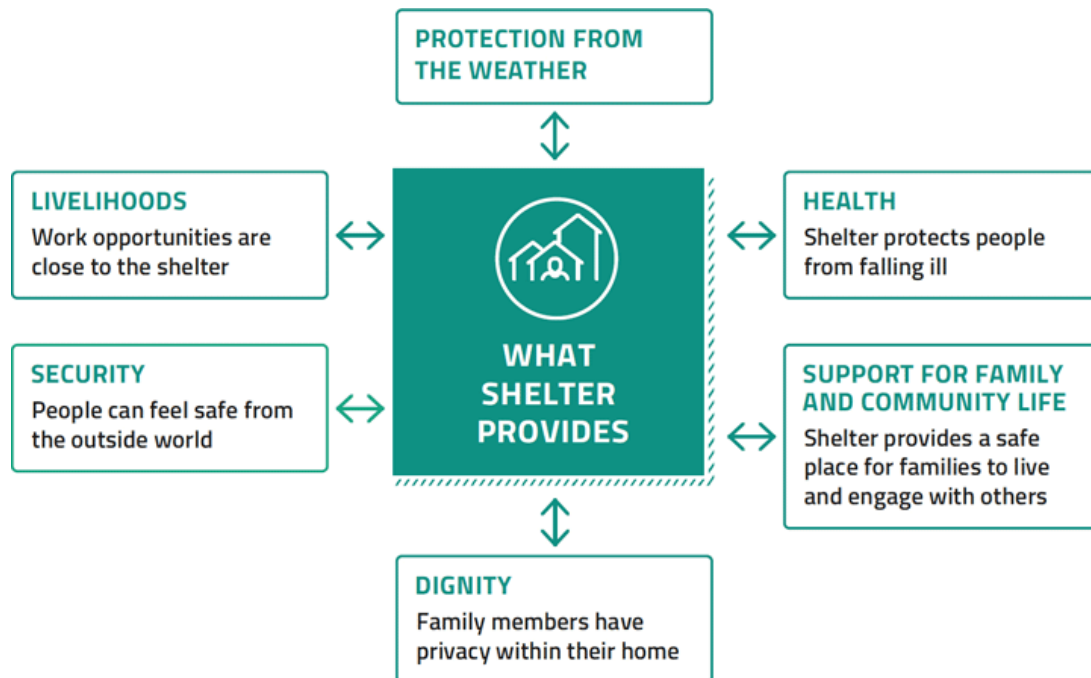
Impact of Our Interventions

- Before and After type impact or improvements by our interventions
- Procedural- how was our communication with beneficiaries during the process? How was the distribution? Etc.
- Relevance- presence of selling the items, or not knowing what to do with the items
- Is there a difference in effectiveness of modalities? (cash, voucher, in-kind)
- Beneficiary satisfaction
- How consultative was the process with beneficiaries?



Shelter Outcomes and Beneficiary Satisfaction

- Shelter performance
- OR how items distributed contribute to better shelter performance or habitability
- What is habitability?
- How satisfied are the beneficiaries living in the shelters that they have?
How satisfied are they with the assistance provided?
What would they change if they were the one providing assistance?



Shelter Cluster NWSW Cameroon

ShelterCluster.org

Coordinating Humanitarian Shelter



Protection Principles



Core Humanitarian Standard



Shelter and Settlement

Planning	Location and settlement planning	Living space	Household items	Technical assistance	Security of tenure	Environmental sustainability
STANDARD 1 Planning	STANDARD 2 Location and settlement planning	STANDARD 3 Living space	STANDARD 4 Household items	STANDARD 5 Technical assistance	STANDARD 6 Security of tenure	STANDARD 7 Environmental sustainability

APPENDIX 1 Shelter and settlement assessment checklist

APPENDIX 2 Description of settlement scenarios

APPENDIX 3 Additional characteristics of settlement scenarios

APPENDIX 4 Assistance options

APPENDIX 5 Implementation options

APPENDIX 6 Potential assistance and implementation options connected to settlement scenarios (online)