

Source: NDRCC, DAE, DLS and Flood Update by Sirajganj, Kurigram, Gaibandha and Jamalpur District Authority

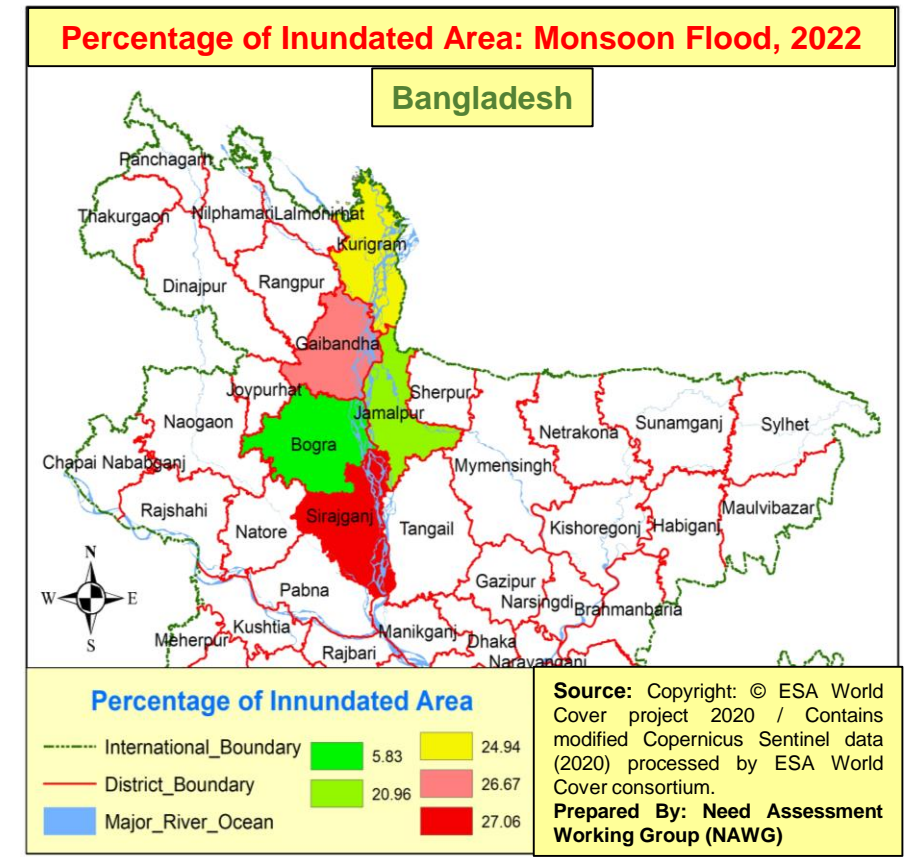
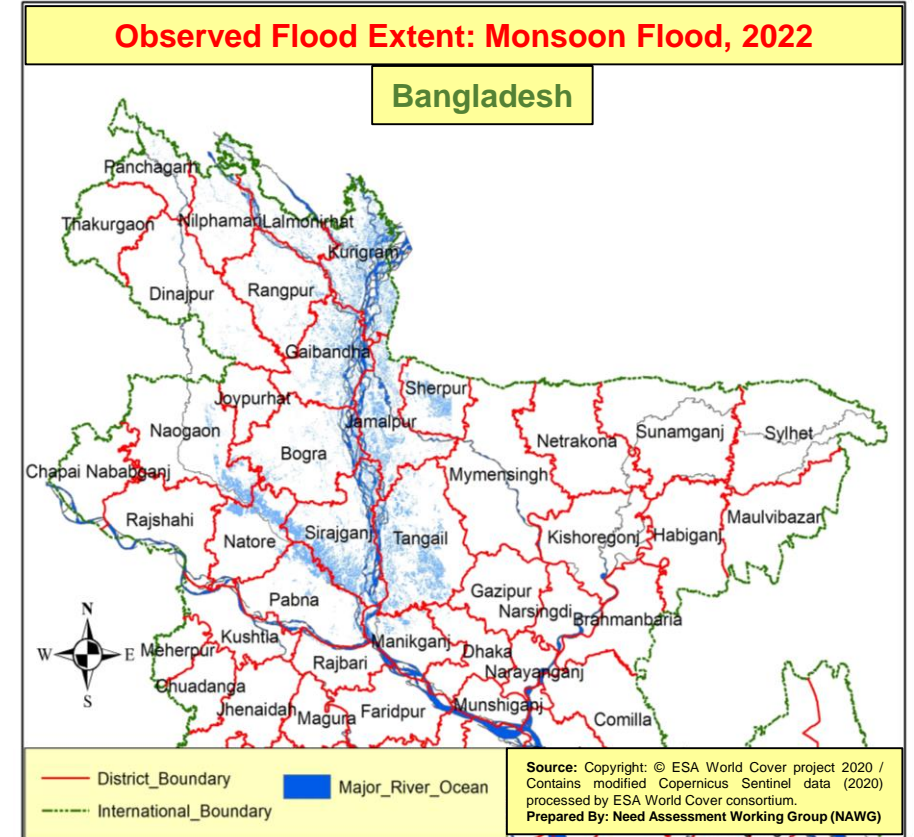
Background

The rivers of the Brahmaputra-Jamuna river basin flowed over the danger level at some points due to recent incessant rain and water from the upstream caused flood in several northern districts of Bangladesh. Kurigram, Gaibandha, Sirajganj, Bogura and Jamalpur experienced a moderate flood. However, in some areas, especially the people living on the low land, adjacent to the riverine areas suffered a lot due to inundation and lack of access to basic services. The water level of the river basin has receded faster on 25 June 2022, as well as the flood water however water level again in raising trend and as per forecast from FFW will continue be raising upto 04 July. This situation analysis compiled disaster damage information collected by the Government of Bangladesh and provide highlights of the impacts.

Government Response:

District	Cash (in BDT)	Rice (in metric tons)	Baby Food (In BDT)	Fodder (In BDT)	Dry Food (Packet)
Kurigram	3,650,000	538	1,895,000	1,775,000	1,000
Sirajganj	-	62	-	-	933
Gaibandha	600,000	80	1,550,000	1,600,000	155
Jamalpur	2,200,000	300	-	-	8,000
Bogura	1,500,000	100	550,000	550,000	-
Total	7,950,000	1,080	3,995,000	3,925,000	10,088

Source: NDRCC disaster situation report (27 June, 2022)



At a glance Damage and Loss in various sector :

Districts	Total Arable land of Damaged Crops (Hector)	Damaged Arable Land (Hector)	Damaged Rate (%)	Livestock affected	Livestock_death	Livestock Loss (in USD)
Jamalpur	39660	2738	6.9	-	-	-
Kurigram	31313	13711	43.79	112283	-	12105
Gaibandha	37663	1324	3.52	62080	-	2448
Sirajganj	49498	5556	11.22	-	-	-
Bogura	34198	758	2.22	-	-	-
Total	192332	24087	13.00	174363	0	14553

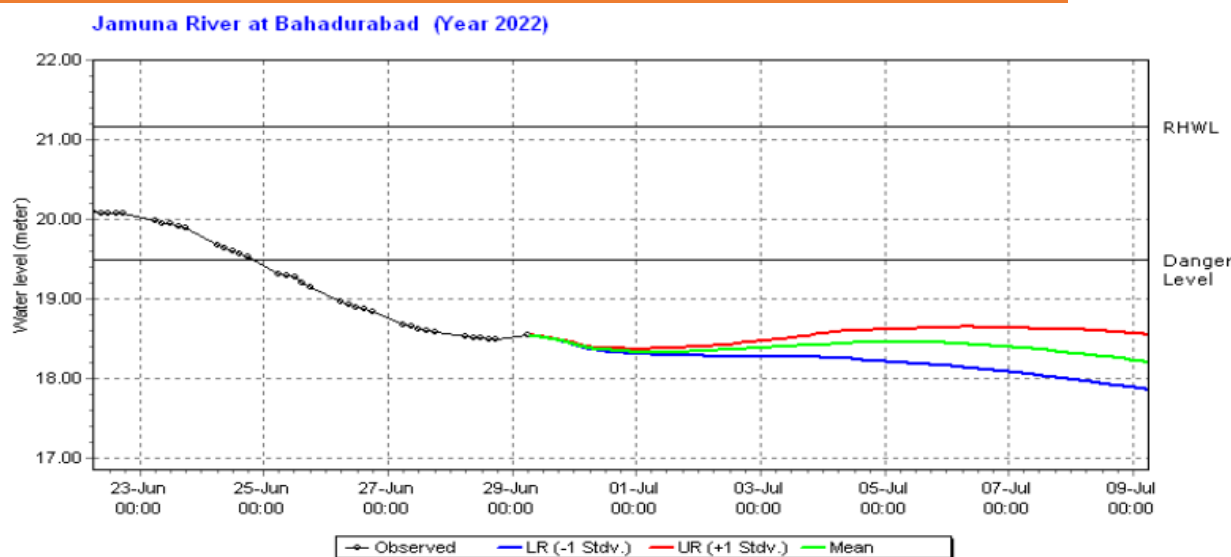
Source: DAE, DLS

Forecast for

- The major rivers in the country are in rising trend except the Ganges-Padma and Koshiyara, which may continue in next 24 hours.
- Today some of the places has received large excess of rainfall than normal and in the next 24 hours, there is a chance of moderate to heavy rainfall at places northern of Bangladesh, Sub-Himalayan West-Bengal (Jalpaiguri, Sikkim, Darjeling, Kochbihar, Dhubri) and Bihar states of India.
- As a result, the water level of major rivers of northern Bangladesh may rise faster during this period.
- The peak of second wave in Jamuna river at Bahadurabd is supposed to reach on 4th July which is below 49cm below the danger level.

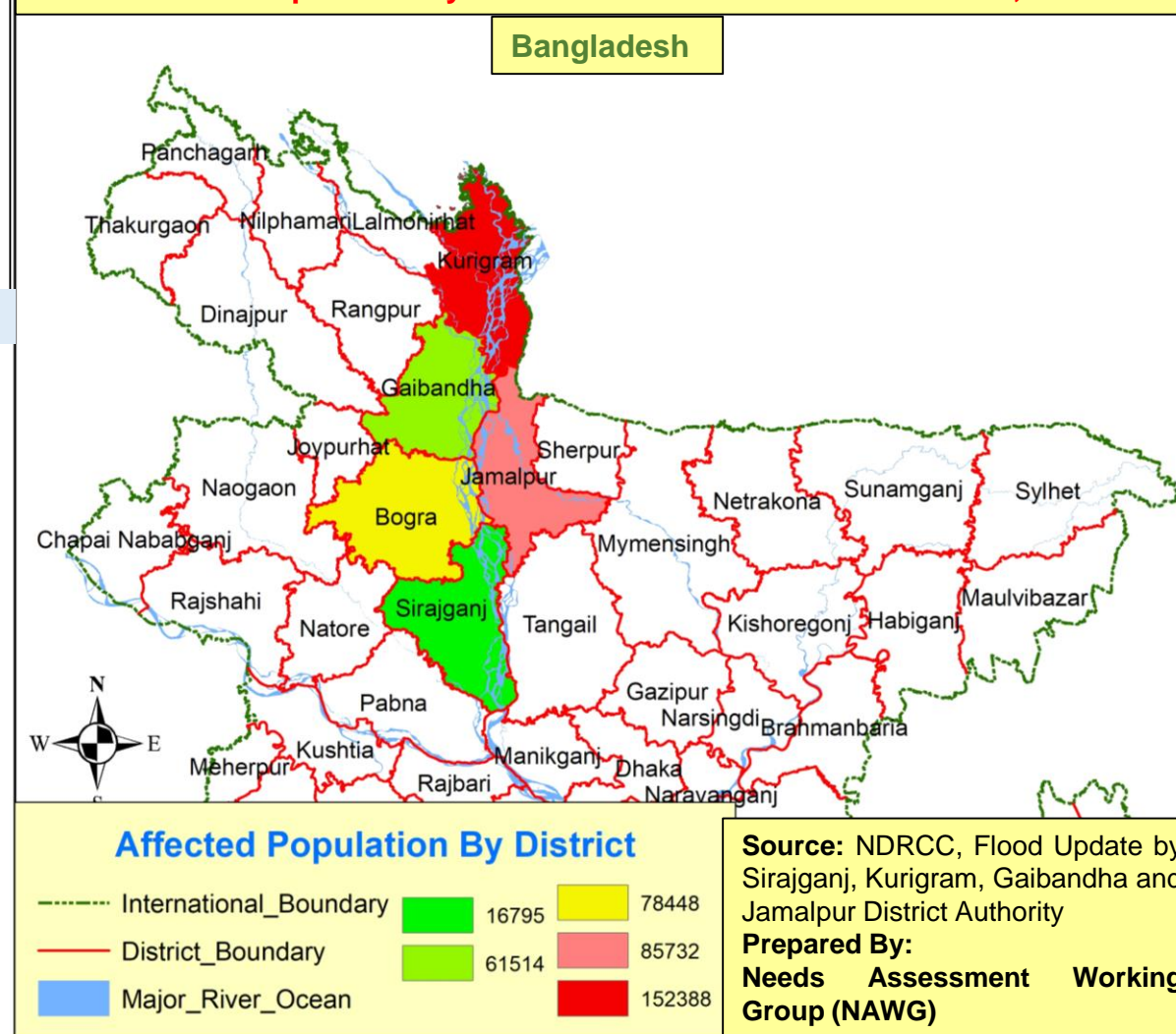
Source: RedCross Climate Center, as of 29 June 2022

10-15 days Forecast in Jamuna River Basin (as of 28 June'22)

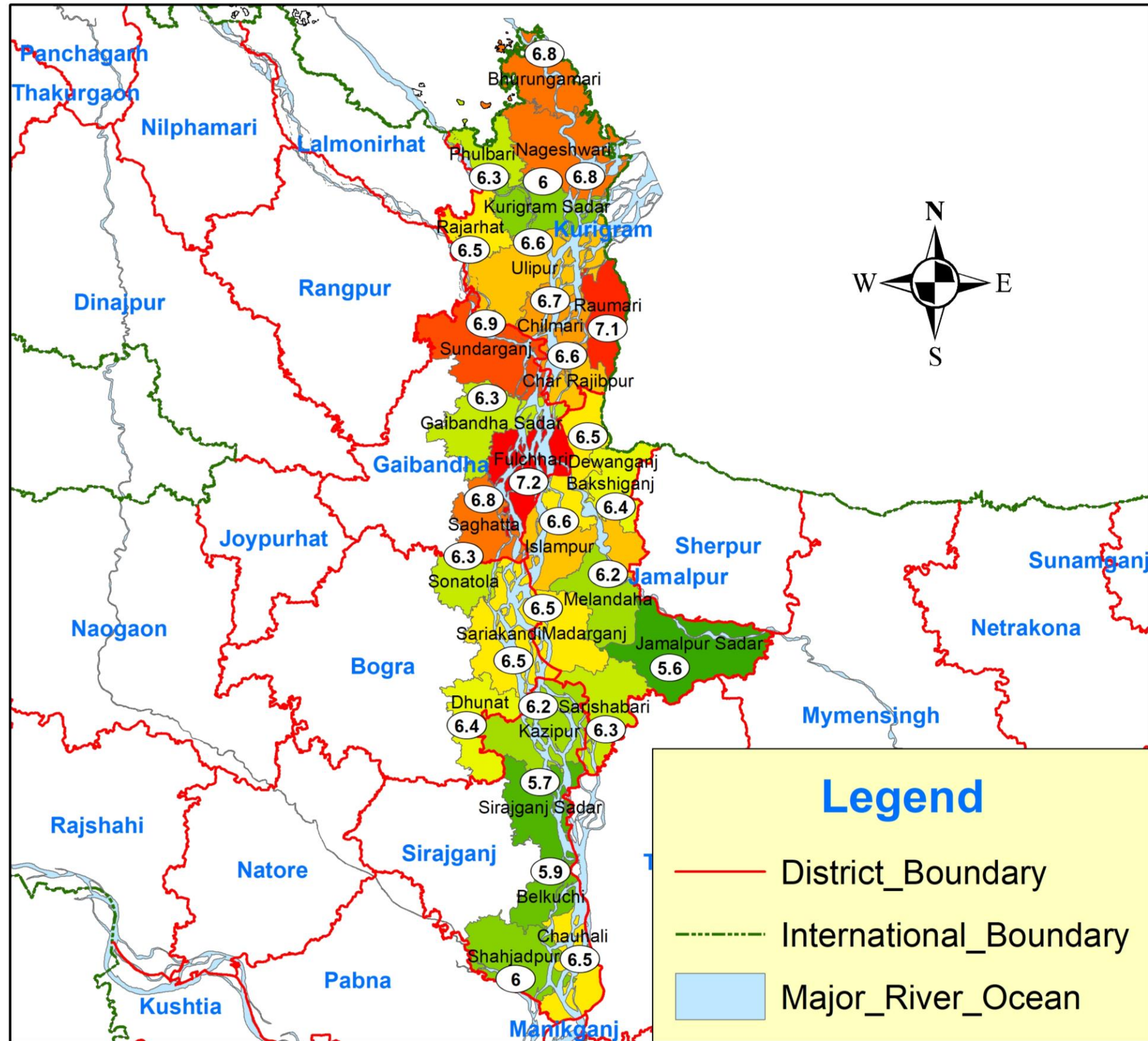


Source: FFWC-RIMES 15 Day ensemble discharge forecast for Bahadurabad, as of 28 June 2022

Affected Population By District: Monsoon Flood North West, 2022



INFORM RISK INDEX based coping capacity score at sub-district level in flood affected areas:



In General, Higher score indicates lower coping capacity of particular Sub-District. Considering composite average score (1-10) for all indicators of coping capacity (e.g.- Access to health services, literacy rate, road network, Coverage of SSN like EGPP etc.); community has **strong coping capacity** if INFORM Risk score is between 1 to 3 while score 4 to 6 indicates **moderate coping capacity**, 7-8 indicates **poor coping capacity (severe vulnerable in terms of coping capacity)** and 8-10 indicates **very poor coping capacity (extreme vulnerable in terms of coping capacity)**. This Map shows the sub-district wise lack of coping capacity INFORM score for Monsoon Flood affected districts.

For Updates and Contacts Needs Assessment Working Group (NAWG), Bangladesh

NEEDS ASSESSMENT WORKING GROUP (NAWG) BANGLADESH

Events Documents Maps/Infographics Assessments

NEWSFEED

FACEBOOK

TWITTER

Needs Assessment Working Group (NAWG) Bangladesh

Overview of NAWG

As consensus with of Bangladesh and agreed by Humanitarian Coordination Task Team (HCTT) of Bangladesh, all assessments in the initial days and weeks of a disaster should be joint assessments to make sure participation of all stakeholders and ownership of the results. Humanitarian stakeholders in the country developed the Joint Needs Assessment (JNA) tools, methodologies, processes following and the MIRA best practices.

The overall objective of the NAWG is to harmonize and promote cross-sector needs assessment initiatives for consistent, reliable and timely sex, age diversity analysis humanitarian needs in complex emergencies and natural disasters to strengthen informed decision making and improve humanitarian response that complement GoB response.

Assessments in 2021-2022

- [NAWG _situation overview and anticipatory Impact Analysis_Monsoon Flood_20 June'22](#)
- [KIN and Preliminary Analysis situation update_18 June 2022](#)
- [KIN and Preliminary Analysis situation update_18 June 2022](#)
- [20220608_Sitrep_Sitakunda](#)

KEY DOCUMENTS

[Needs Assessment Working Group \(NAWG\) ToR](#)

[Overview of SUBARNA and NAWG](#)

About the Working Group : The Needs Assessment Working Group (NAWG) is the platform for government and non government humanitarian agencies under Humanitarian Coordination Task Team (HCTT). The secretariat of the Working Group is hosted by CARE Bangladesh under the “**Supporting Bangladesh Rapid Needs Assessment (SUBARNA) II Project.**”



Disclaimer: This material has been funded by UK aid from the UK government, however the views expressed do not necessarily reflect the UK government’s official policies.

Note: The final draft of the report published on **29th June, 2022** with the consensus of all clusters, working group, NAWG member agencies and relevant humanitarian agencies, submitted to Ministry of Disaster Management and Relief of the Government of Bangladesh(Chair-HCTT) for review and approval.

Please reach us for any queries related to this report:

1. Kaiser Rejve, Director, Humanitarian and Resilience Programme, CARE Bangladesh and Co-Chair-NAWG. E: Kaiser.rejve@care.org
2. Fuad Ur Rabbi, Programme Coordinator, SUBARNA, CARE Bangladesh and Coordinator,NAWG E: fuadur.rabbi@care.org