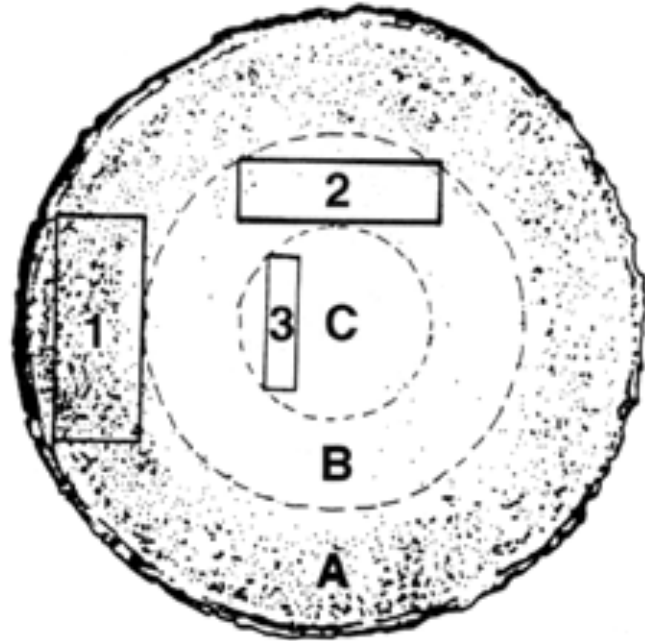


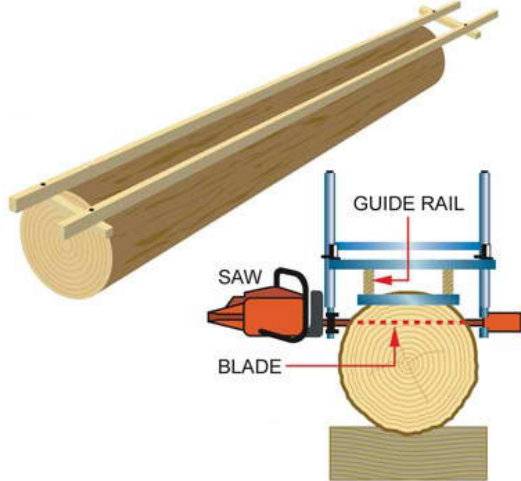
- A: High density group
- B: Medium density group
- C: Low density group



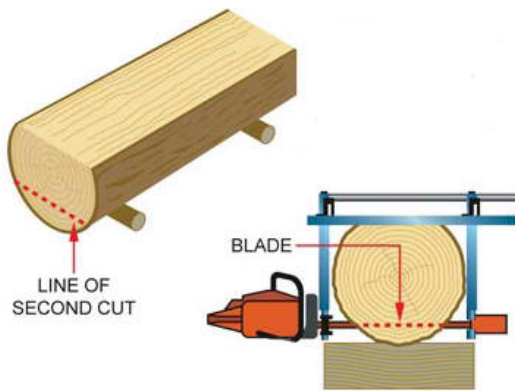
IN THE PICTURE REFERENCE ABOVE:

- 1 – Materials used for permanent (longer term transitional “core” houses)
- 2 – Materials used for temporary (shorter term transitional houses)
- 3 – Materials used for other non-structural (charcoal, scaffolding)

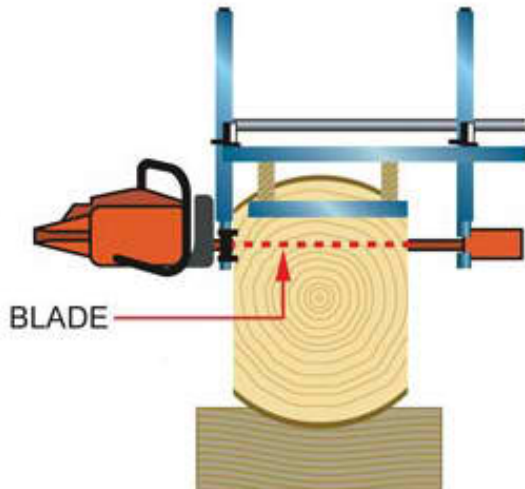
CUTTING USING A LADDER MILL AKA "ALASKA SAWMILL" CHAINSAW ATTACHMENT TO GET HIGHER QUALITY CUTS FROM TREES



LADDER OR FRAME ATTACHED TO SIDE OF TREE AND FIRST CUT



SECOND CUT TO CAPTURE ADDITIONAL EXTERNAL PIECES OF A GRADE



FINAL CUTS TO CAPTURE EXTERNAL PIECES OF A GRADE FOR RESAWING



CROSS SECTION OF FRESH LOGS CUT IN EARLY SEPTEMBER 2014

- A - Outer ring inside of the bark layer with mix of light and dark material
- B - Distinct color change from outer ring color to lighter ring color
- C - Core off color material can clearly be seen in center of tree
- D - Bark layer can clearly be seen in outer centimeter of log



OLD CUTTING PATTERN TO GET "TABLONE" OUT OF CENTER, LOOSING MOST OF THE "A" GRADE MATERIALS IN THE CUTS THAT ARE THROWN AWAY



NEW CUTTING PATTERN PRODUCING A SMALLER TABLONE CONSISTING OF THE C/B GRADE MATERIALS, OUTER CUTS REMOVING SOME BARK, AND FOUR PIECES OF MIXED A/D GRADE MATERIALS FOR FURTHER REFINING AT SAWMILLS.