

Highlights

1. In Pakistan, IOM as the National Shelter/NFI Cluster coordinates the natural disasters and the complex emergency (conflict) responses.
2. In Pakistan, the frequent cycle of natural disasters and the ongoing conflict, create every year a high number of people in need of shelter and NFI support throughout the country.
3. Natural disasters over the past three years have affected at 29 million people and damaged almost 3 million houses
4. Estimated 5 million people displaced by violence since 2004 in North West Pakistan, with currently 1 million registered IDPs.
5. 3 current operational contexts: 2012/2013 Floods response; Displacement due to situation of violence in North- Western Pakistan ; Balochistan earthquakes (April 2013 and September 2013)

Cluster strategy and objectives

The SC Pakistan main goal is to ensure a strategic, coordinated and harmonized response, aiming to maximize the available resources, target the most vulnerable and promote the recovery of the affected population in a resilient manner.

The SC recommends sheltering solutions that cover the immediate shelter needs and simultaneously consider the opportunity to provide a package that will help affected populations in their first step towards reconstruction

Context and Response

Currently the SC is coordinating the following shelter responses:

- a) In Khyber Pakhtunkhwa/FATA where thousands of people have been displaced as a result of the ongoing violence. These people need shelter support for their displacement period and to support durable solutions, including sustainable returns;
- b) In Sindh, Balochistan and Punjab various cluster members are implementing early recovery shelter activities for those affected by the 2012 floods; Some areas were affected again in 2013, causing damages for the third, sometimes fourth year in a row.
- c) In central Balochistan where a recent earthquake affected approximately 30,000 families (first estimations)

Challenges

1. The lack of formal request for international support by the GoP and implementation of respective procedures for provision of funds.
2. Extremely limited access to populations affected by conflict and/or natural disasters due to security concerns, like in Balochistan and KP/FATA, are a serious obstacle for a timely humanitarian assistance
3. Disaster reoccurrence (both natural and man made), multiple crisis at the same time

Contact details :

Cluster coordinator : Amina Saoudi
Email : scpakistan.coord2@gmail.com

Key figures - Floods 2012 (F)- Complex emergency 2013 – (C)

Total affected population: 551'718 HH
Cluster target population: 435'867 HH
Total houses destroyed (F): 198' 931 units
Total houses damaged (F): 187'241 units
Funding needs (mio USD): 129.5
Funds available (mio USD): 50.2 (38%)

Response:	Target (HH)	Reached
Non Food Items	435'867	34 %
Emergency shelter	435'867	37 %
Long-term shelter	341'677	20 %
Settlement type:	HH	%
Non-displaced (F)	386'172	70 %
Host families/self settled(c)	148'854	27 %
Self-settled camps	0	00 %
Collective centers	0	00 %
Planned camps (C)	16'692	3 %

Cluster:

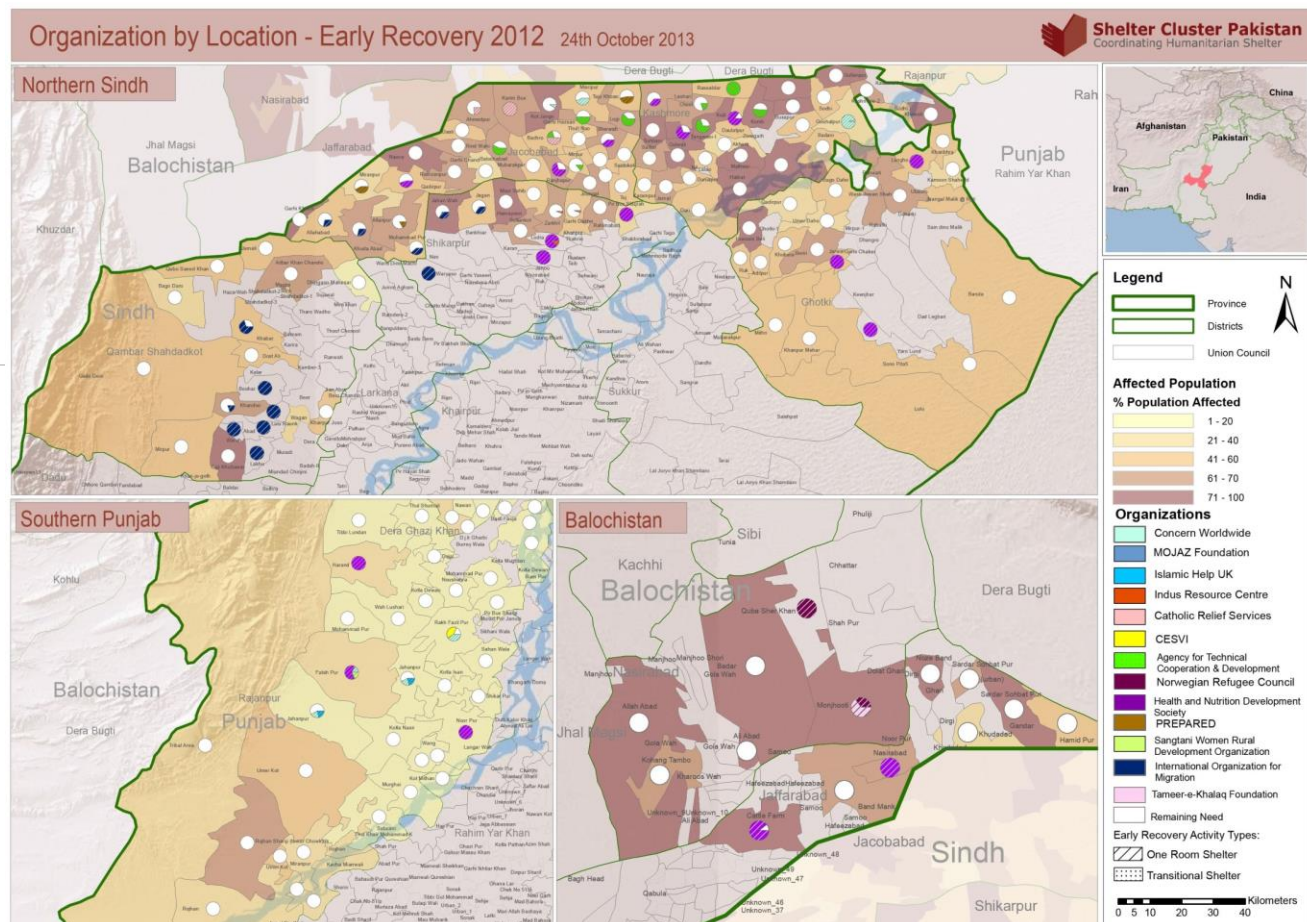
Cluster lead agency IOM
Co-lead (Gov) NDMA
Nbr of cluster partners 239
Nbr of staff dedicated to the cluster 11
Nbr of sub-national clusters 3

Key Dates

Crises : 2010, 2011, 2012, 2013 Floods; Complex emergency since 2009 in North West Pakistan; 2013 Balochistan Earthquakes
Activation of Cluster : 2005
Deployment : Cluster reactivated in 2011 disasters since 2011
Handover : N/A
GLIDE:

Needs, response and gap : KP/FATA and 2012 Floods

Total affected population (HH)	Cluster target population (HH)	Non Food Items - Target (HH)	Non Food Items - Reached (HH)	Non Food Items - Reached (%)	Emergency shelter - Target (HH)	Emergency shelter - Reached (HH)	Emergency shelter - Reached (%)	Long-term shelter - Target (HH)	Long-term shelter - Reached (HH)	Long-term shelter - Reached (HH)
551,718	435,867	471,267	150,207	32%	435,867	160,093	37%	341,677	69,066	20%



More maps available at : www.shelterpakistan.org

BALUCHISTAN EARTHQUAKES (FIRST ESTIMATIONS)

	Distribution Made (According to PDMA)	Need/Target Assessed (PDMA)	HH Covered (According to PDMA)	GAP Expected Scenario	Total funding gap (USD)
Total Families		30,000			
Tents	33,899	21,000	33,899	0	-
GAP in ES	33,899	21,000	33,899	-	-
Blankets/Quilts	14,425	105,000	2,885	90,575	645,239.05
Shawls		105,000	0	105,000	360,000.00
Kitchen Set		21,000	0	21,000	470,000.00
Sleeping/Plastic Mats	19,590	42,000	9,795	22,410	36,282.86
Jerry Can	400	21,000	400	20,600	26,485.71
Solar Lamp		21,000	0	21,000	173,600.00
GAP in NFI (Wint. ONLY)					1,711,608
ER Shelter	0	15,000	0	15,000	7,500,000
GAP in ER Shelter		15,000	-	15,000	7,500,000
TOTAL					9,211,608

Cluster lead: IOM

Partners of the Shelter Cluster: