

Tropical Storm Sendong 2011

ShelterCluster.org

Coordinating Humanitarian Shelter

Philippine Inter Agency Rapid Shelter Assessment

Geneva – 16 February 2012



Tropical Storm Sendong

- On 15th of December, T.S. Washi (locally known as Sendong) crashes into Philippine
- Heaviest hit is Cagayan de Oro and Iligan regions of Mindinao island in the south
 - Typically not affected by storms
 - Conflict / kidnapping rife on the island

Over 100 000 Transferred
139 450 Houses Affected
Through Evacuation Centres



Tropical Storm Sendong 2011

ShelterCluster.org

Coordinating Humanitarian Shelter



Cluster Coordination

- IOM Initially the Shelter Cluster Lead
- Requests for IFRC to add capacity to Shelter Cluster
 - Multicenter Interagency Rapid Assessment (MIRA)
 - Shelter Cluster identified as priority
- On 7th of January, IFRC deployed to Philippines
- On 12th of January, REACH requested to provide support for assessment / GIS / DB support
- On 13th of January, Shelter Assessment Manager arrives
 - Engaging with cluster members / other clusters
- On 17th of January, GIS/DB Manager Arrives
- Deadline: 3rd February Flash Appeal



Tropical Storm Sendong 2011

ShelterCluster.org

Coordinating Humanitarian Shelter



MIRA

- Multicluster Interagency Rapid Assessment to provide input into Flash Appeal
- Strong buy-in from the clusters
 - Provide input and support to develop methodology and implement data collection
 - Potential of mechanism realised (first trial)
- Highlights key issues for the Flash Appeal
- Is not designed to meet all assessment / information management needs of the clusters
 - Shelter cluster assessment begins



Tropical Storm Sendong 2011

ShelterCluster.org

Coordinating Humanitarian Shelter



PHILIPPINES - Tropical Storm Washi (Sendong)

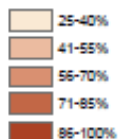
MIRA Assessment Shelter Cluster Results - January 2012

For humanitarian relief purpose only

Production date: 23 January 2012



Percentage of key respondents who agree there is a problem in the community of people not having an adequate place to live



Data sources:
Administrative Boundaries: GSI
Shelter data: MIRA Survey

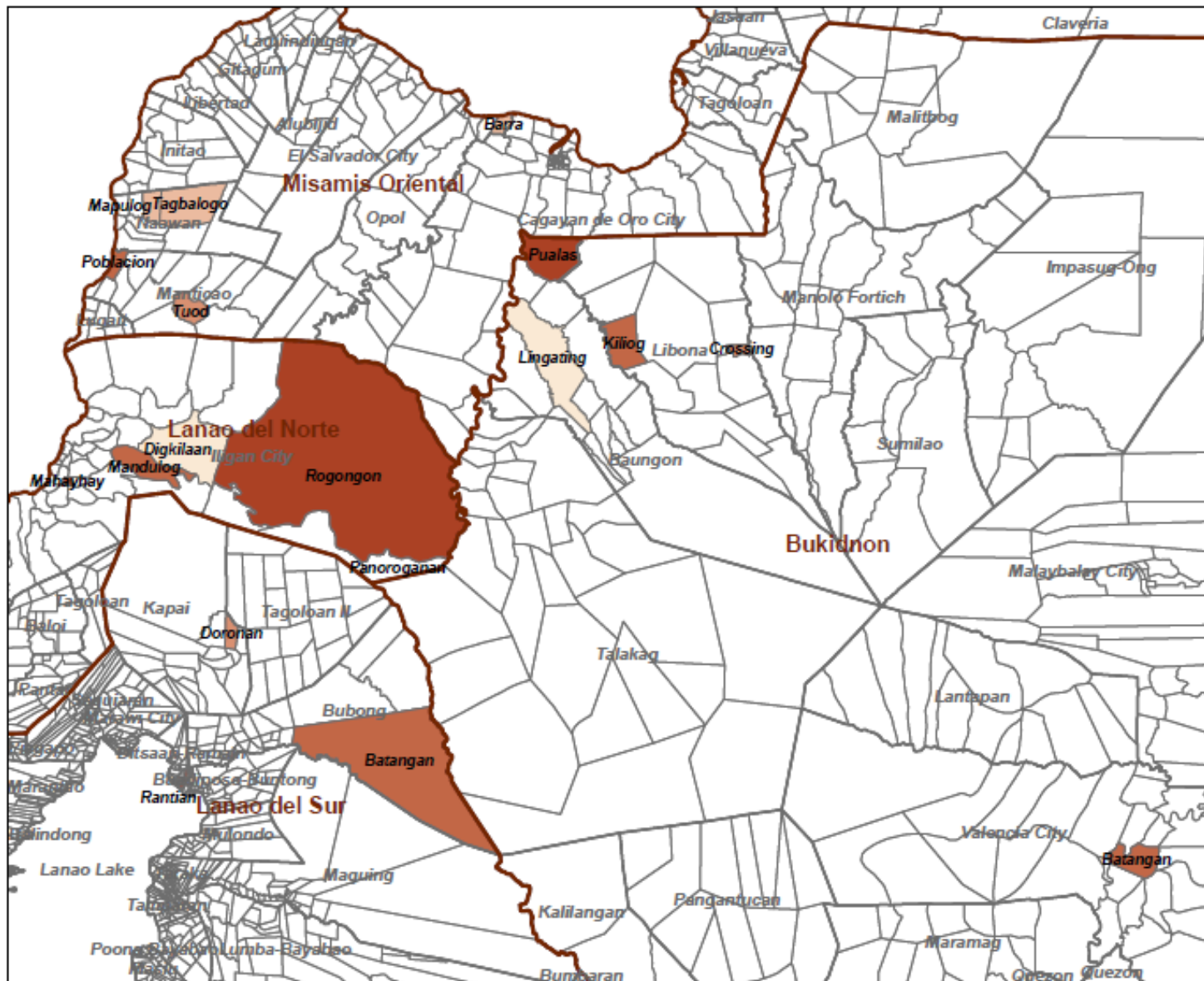
Projection: WGS84
File: REACH_PHL_MIRA_SH1_23JAN2012
Contact: reach.mapping@impact-initiatives.org



Note:
Data, designations and boundaries contained on this map are not warranted to error-free and do not imply acceptance by the REACH partners, associated, donors mentioned on this map.



Tropical Storm Sendong 2011
ShelterCluster.org
Coordinating Humanitarian Shelter



IRSA

- Interagency Rapid Shelter cluster Assessment to provide input into Flash Appeal, Operations
 - January 14 – Planning and Engagement
 - Minor delays with logistics
 - Data collection tools designed
 - January 20-28 Data Collection
 - 140pax volunteers
 - 4000 household surveys, 185 focus groups
 - Cover all affected districts
 - January 30 – Interim Assessment Report
- Secondary Data Ongoing
 - Liaising with Government, agencies, etc.

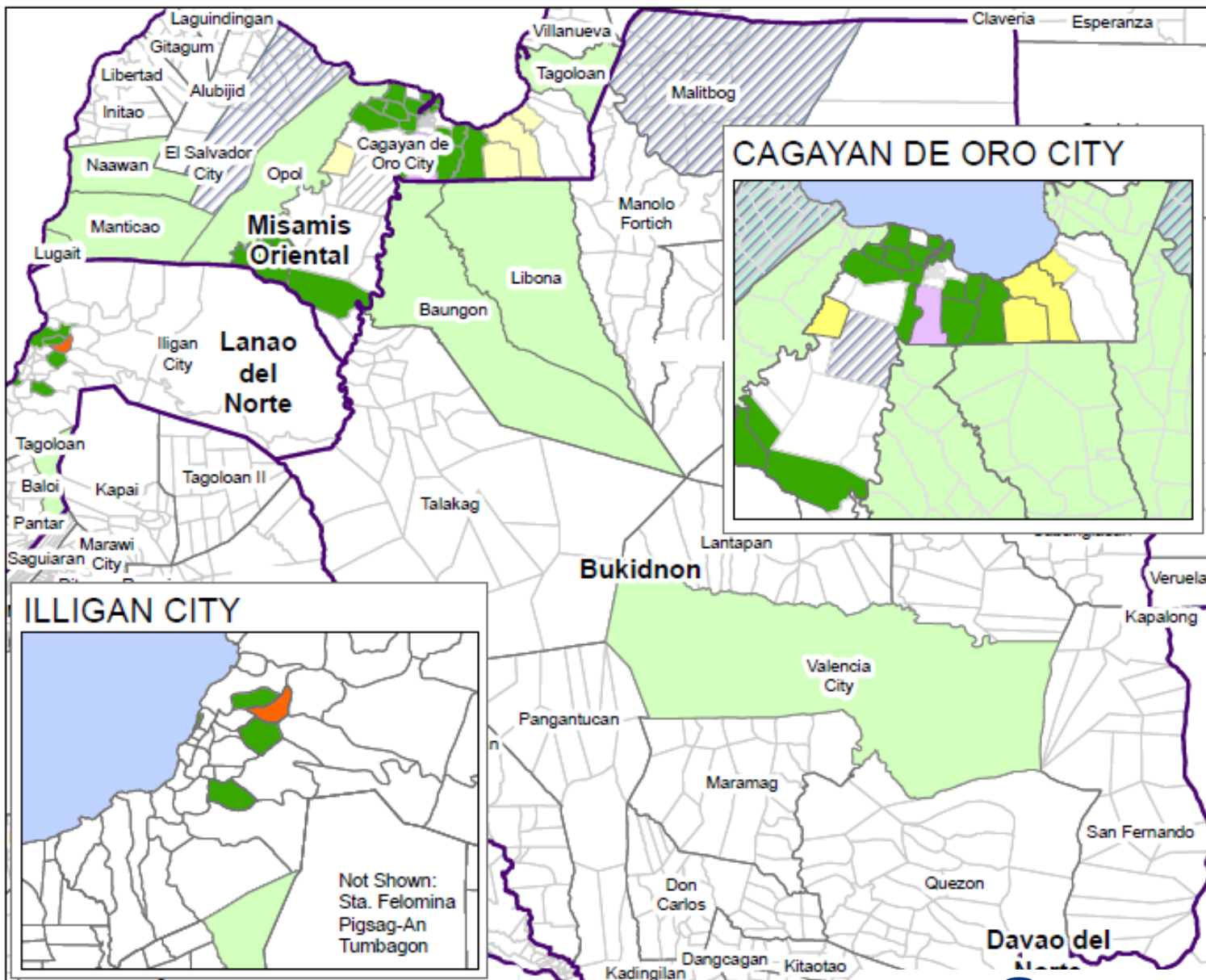
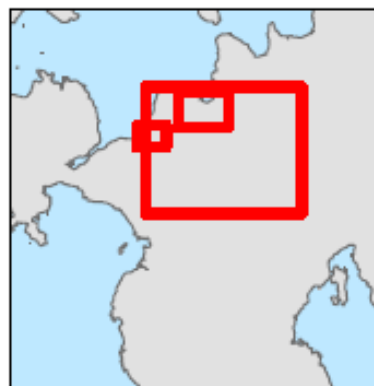


PHILIPPINES - Tropical Storm Washi (Sendong)

Inter-Agency Shelter Assessment - Visited Locations

For humanitarian relief purpose only

Production date: 26 January 2012



Coverage Area of Inter-Agency Shelter Assessment

- Visited
- Planned
- Not going to avoid overlap
- Access to Evacuation Center denied
- No affected shelters found
- Municipality assessments
- Provincial Boundaries

Data sources:
 Administrative Boundaries: GSI
 Shelter data: Inter-Agency Shelter Assessment

Projection: WGS84
 File: visitedBarangays
 Contact: reach.mapping@impact-initiatives.org

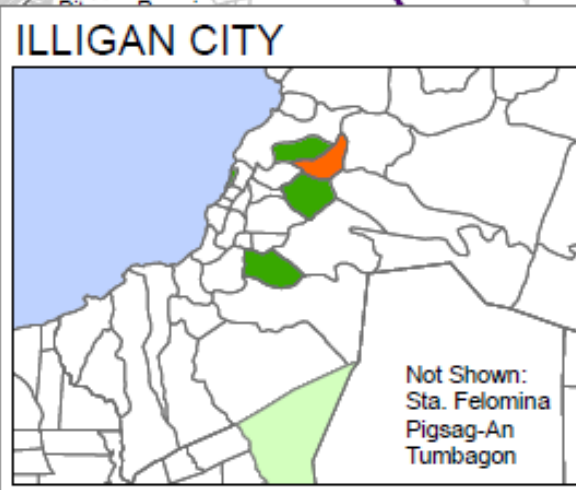


Note:
 Data, designations and boundaries contained on this map are not warranted to error-free and do not imply acceptance by the REACH partners, associated, donors mentioned on this map.

A product of **REACH** and **IMPACT Initiatives**

In partnership with **UNITAR**, **UNOSAT**, and **ACTED**

Tropical Storm Sendong 2011
 ShelterCluster.org
 Coordinating Humanitarian Shelter





Tropical Storm Sendong 2011

ShelterCluster.org

Coordinating Humanitarian Shelter

**RAPID SHELTER ASSESSMENT AFTER
TROPICAL STORM SENDONG
IN REGION X, PHILIPPINES
SHELTER CLUSTER – INITIAL REPORT**



EUROPEAN COMMISSION



Humanitarian Aid



CATHOLIC RELIEF SERVICES



IOM • OIM



Tropical Storm Sendong 2011

ShelterCluster.org

Coordinating humanitarian Shelter



THE CHURCH OF
JESUS CHRIST
OF LATTER-DAY SAINTS



ALL HANDS
VOLUNTEERS



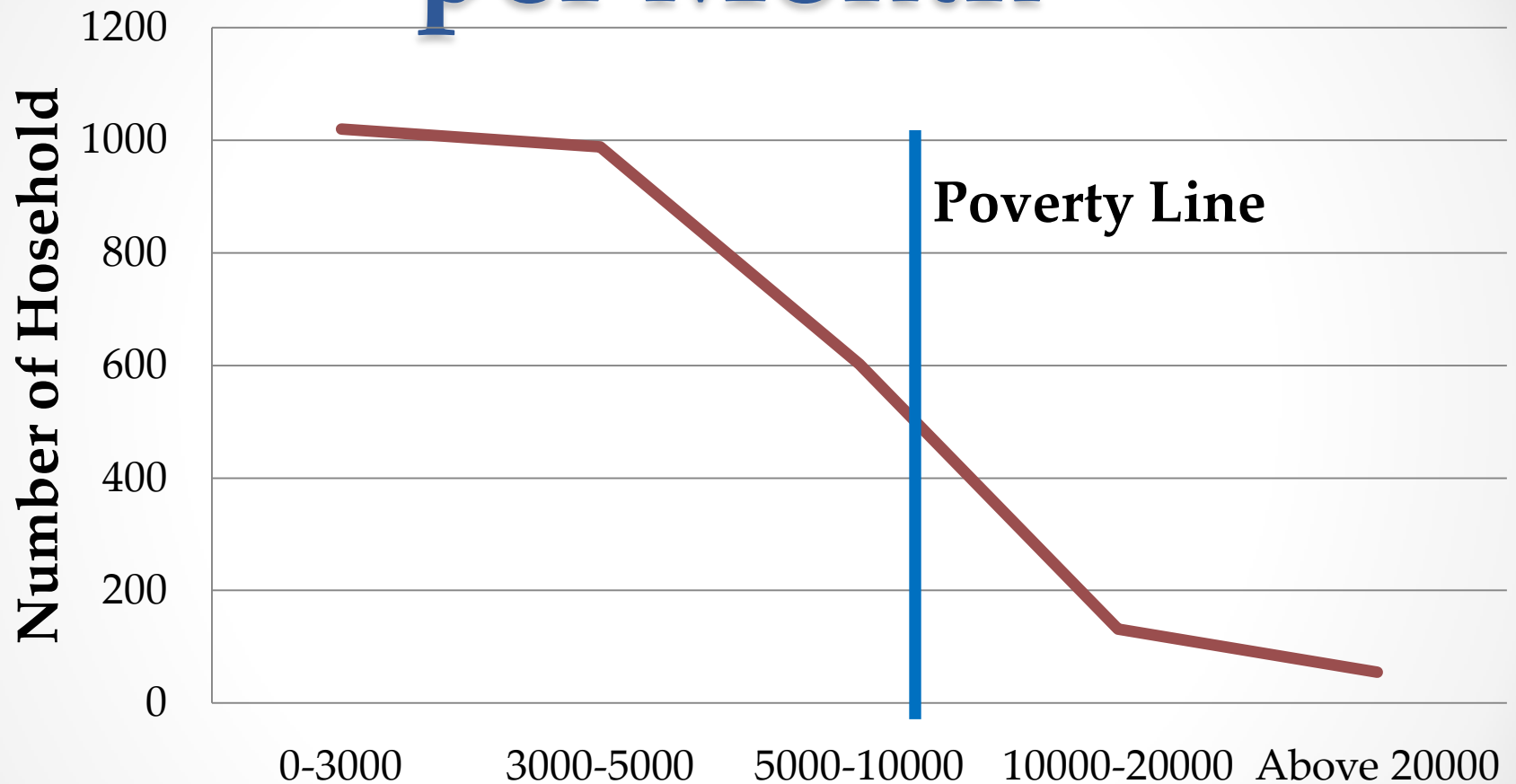
UN HABITAT

Informing Appeal & Operations

- Information disseminated through
 - Fact Sheets
 - Printing of reports
 - Tarpaulin Maps
 - Static Maps
 - Web Map



Average Housing Income per Month



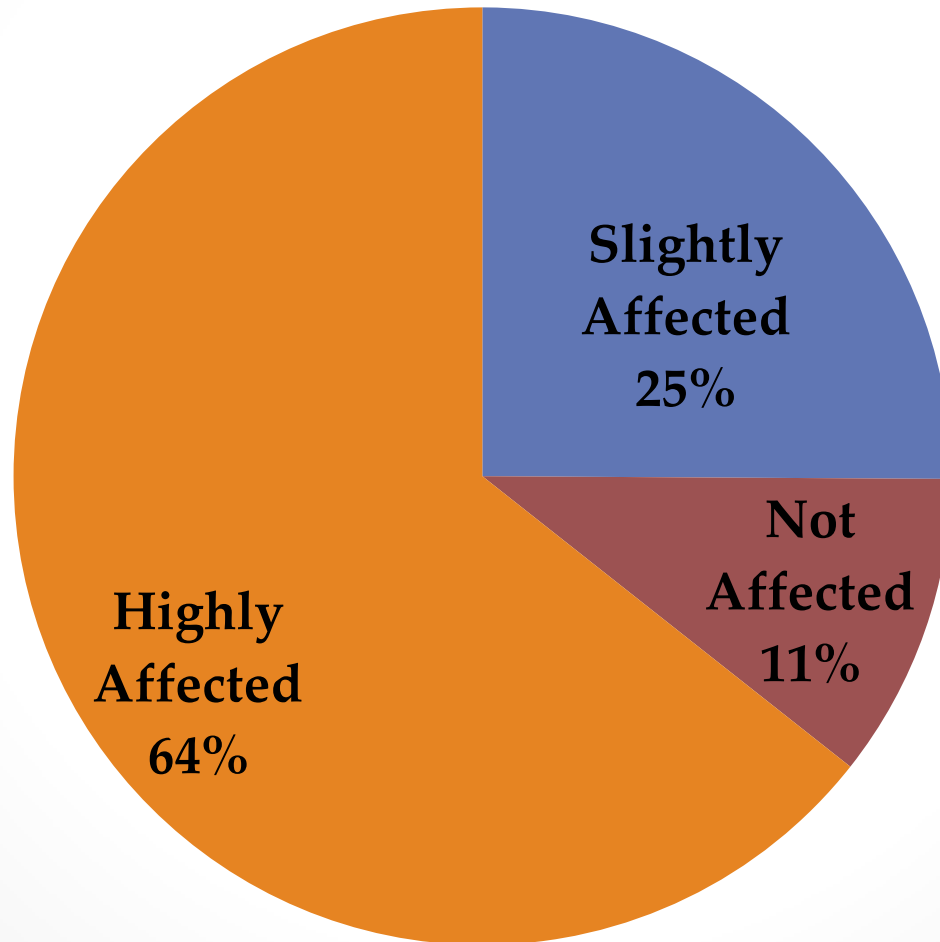
Pesos per Month (43.15PHP=\$1USD)

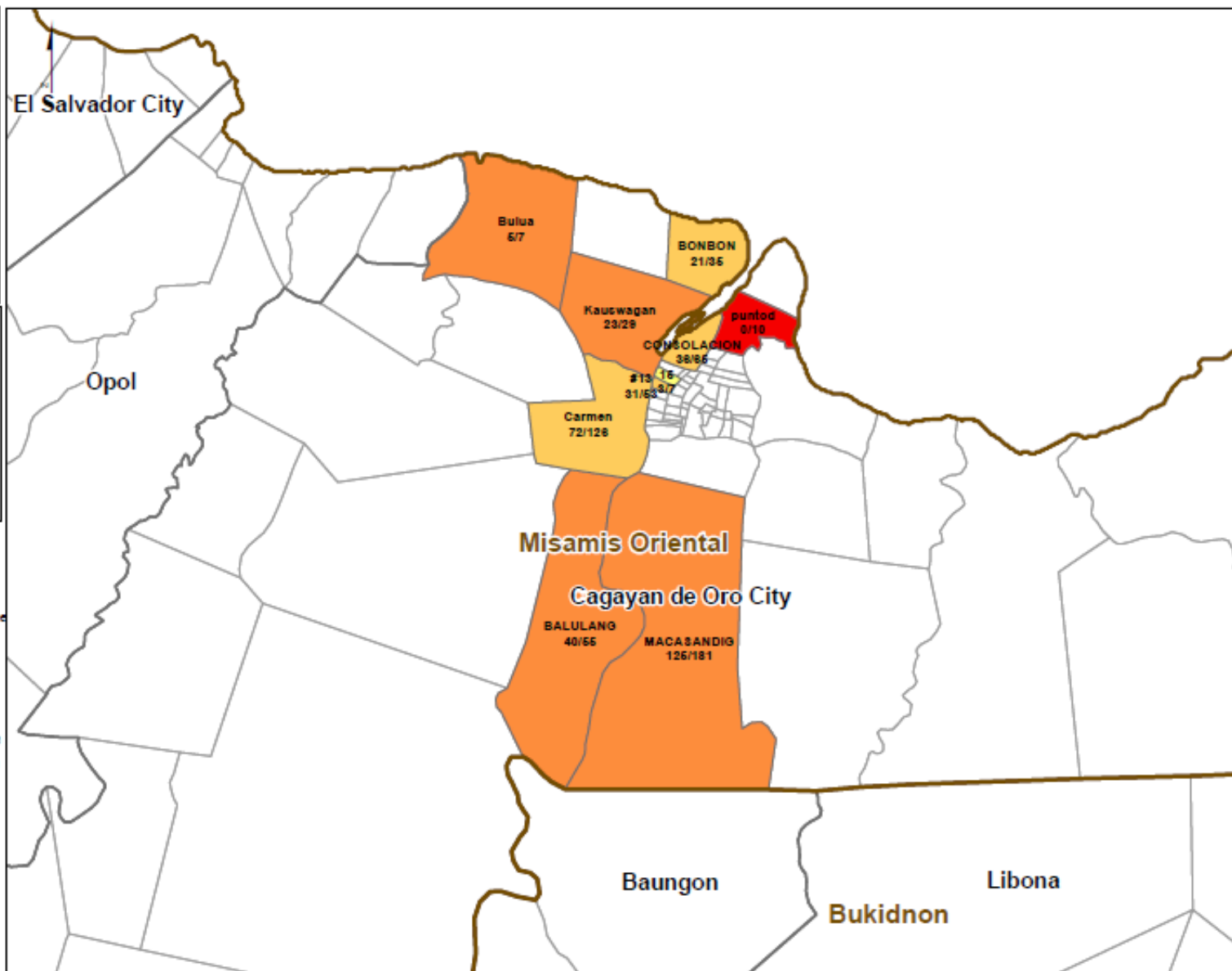


Tropical Storm Sendong 2011
ShelterCluster.org
Coordinating Humanitarian Shelter



Impact on Income Post Sendong



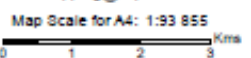


Provinces boundaries
 Municipalities boundaries
 Barangays boundaries

% of household with less than 6000 pesos

- 43 - 50 %
- 51 - 60 %
- 61 - 80 %
- 81 - 100 %

Data sources:
 Administrative boundaries: GADM 2009
 Shelter data: Inter-Agency Shelter Assessment
 Projection: WGS 1984 UTM Zone 51N
 GLIDE number: FL-2011-000204-PHL
 File: REACH_PHL_AssessmentBarangays_Income
 Contact: reach.mapping@impact-initiatives.org



Note: Data, designations and boundaries contained on this map are not warranted to error-free and do not imply acceptance by the REACH partners, associated, donors mentioned on this map.
 This document has been produced with the financial assistance of the European Commission. The views expressed herein should not be taken, in any way, to reflect the official opinion of the European Commission.

A product of **REACH** www.reach-initiative.org

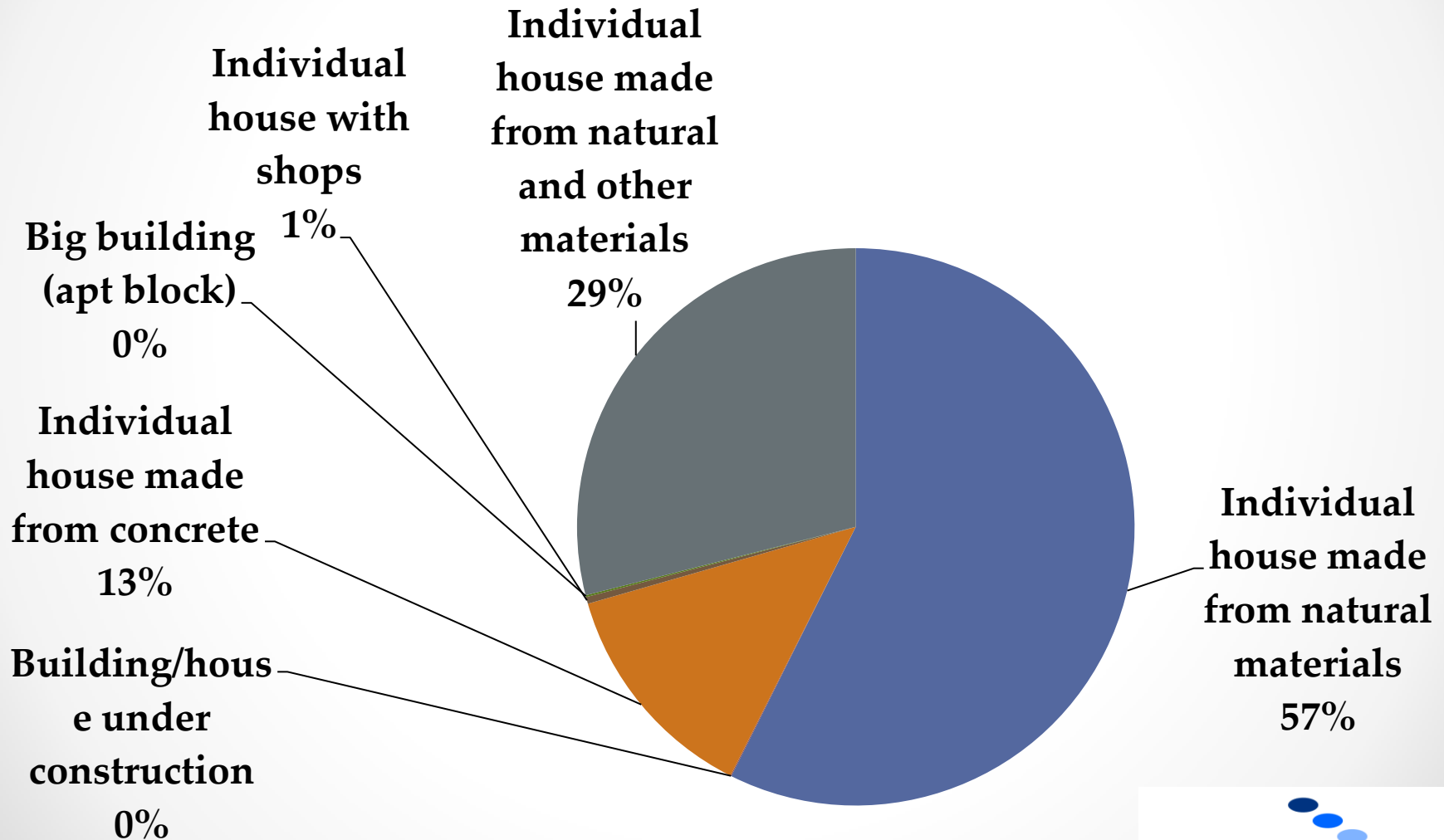
A program of **IMPACT Initiatives**

In partnership with **unitar**, **UNOSAT**, and **ACTED**

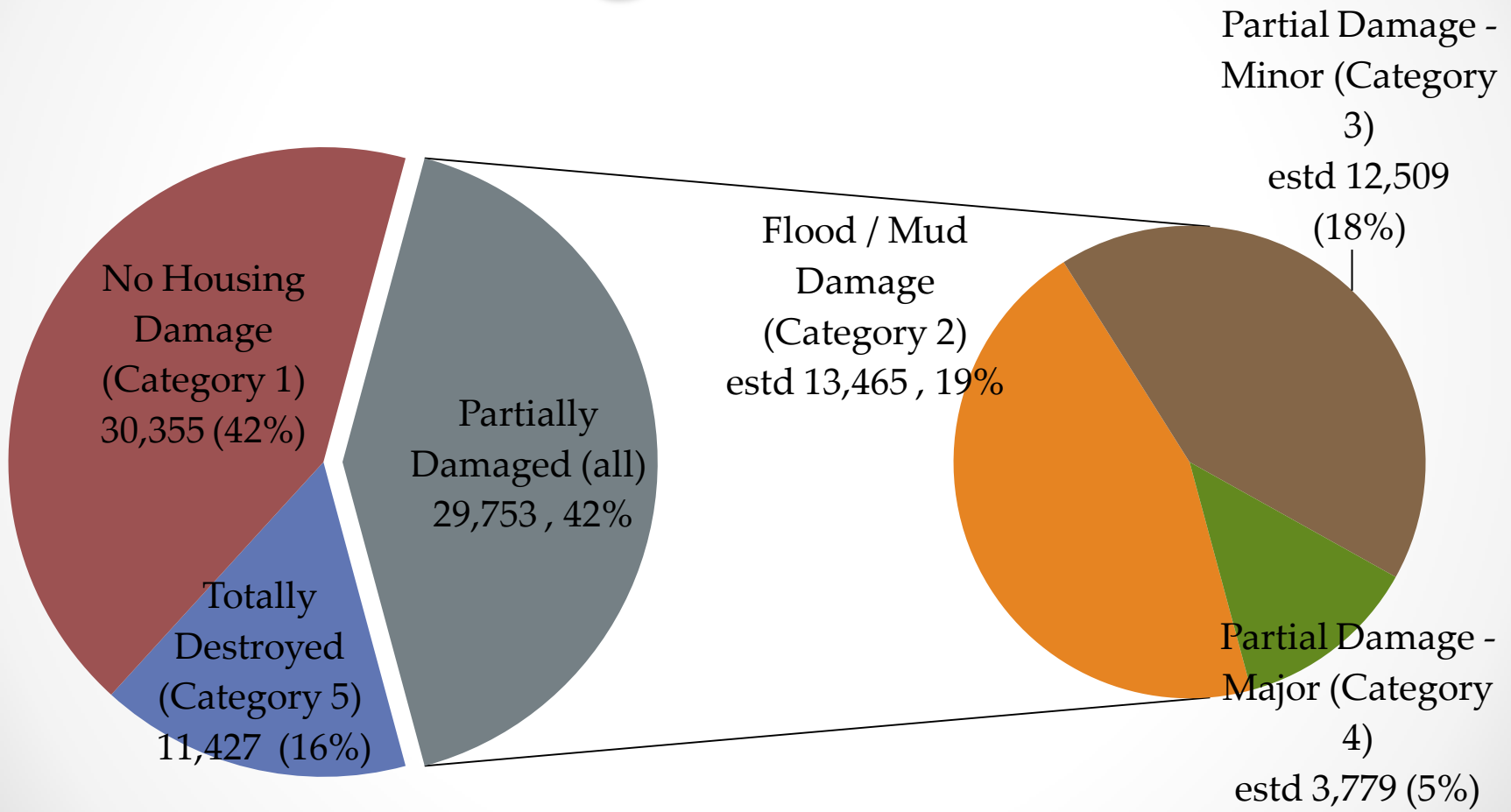
Funded by **EUROPEAN COMMISSION**

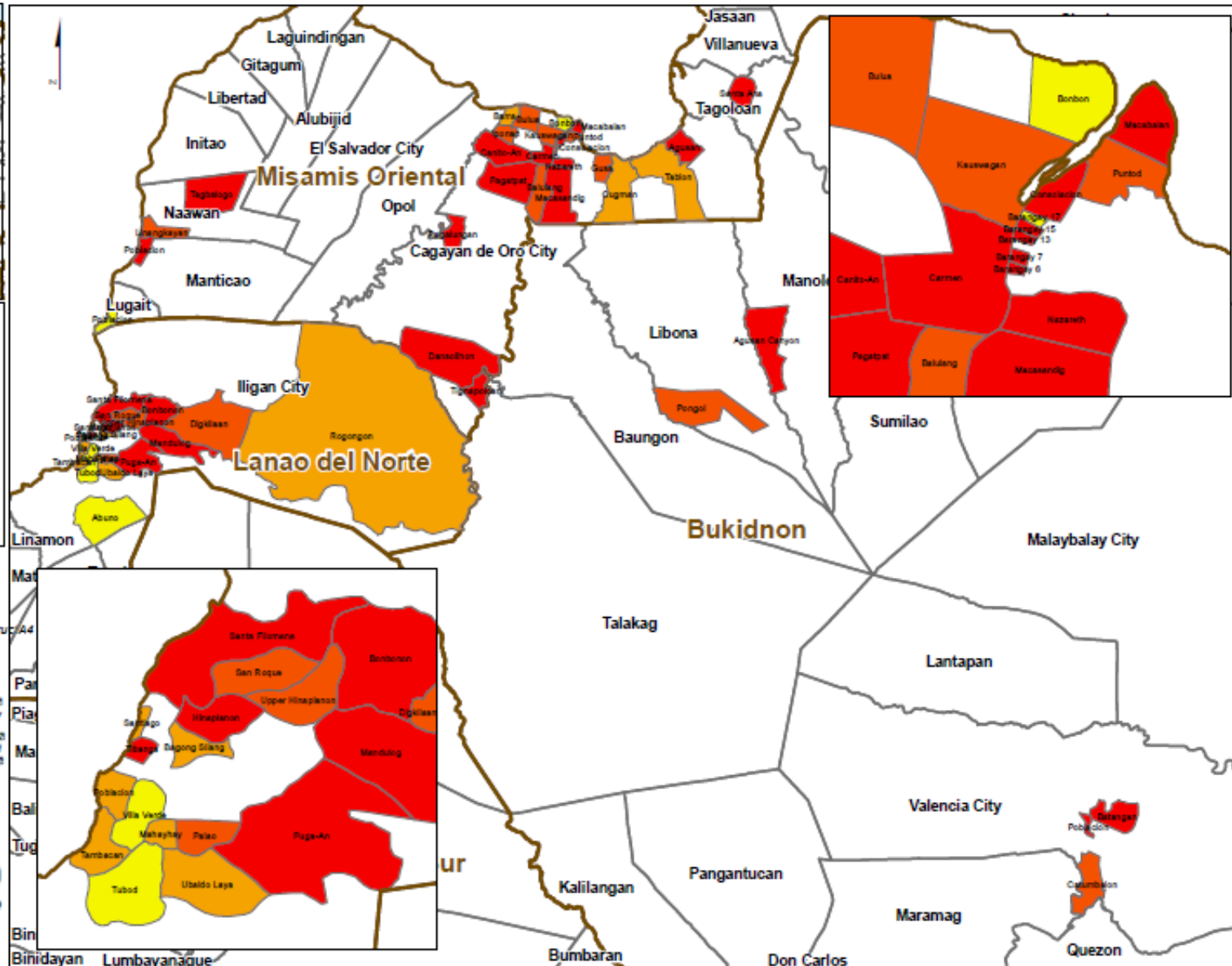


Types of Houses Affected



Categorising Partially Damaged Houses





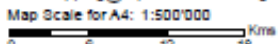
Provinces boundaries
 Municipalities boundaries
 Barangays boundaries

Percentage of shelters assessed classified in categories 4 or 5

0 - 25
26 - 50
51 - 75
76 - 100

Category 4: Partially affected with structural damage - Not livable
Category 5: Heavy/Completely damage To rebuild

Data sources:
 Administrative boundaries: GADM 2009
 Shelter data: Inter-Agency Shelter Assessment
 Projection: WGS 1984 UTM Zone 51N
 GLIDE number: FL-2011-000204-PHL
 File: REACH_PHL_AssessmentBarangays_Destroyed
 Contact: reach.mapping@impact-initiatives.org



Note: Data, designations and boundaries contained on this map are not warranted to error-free and do not imply acceptance by the REACH partners mentioned on this map. This document has been produced with the financial assistance of the European Commission. The views expressed herein should not be taken, in any way, to reflect the opinion of the European Commission.

A product of REACH
www.reachinitiative.org
In partnership with

Funded by



- Provinces boundaries
- Municipalities boundaries
- Coverage area of assessment:
 - Municipalities
 - Barangays
- Shelter Damage Rating in barangays - % of
 - Category 2: Flood effected
 - Category 3: Partially affected with minor structural damage Livable
 - Category 4: Partially affected with structural damage Not livable
 - Category 5: Heavy/Completely damage To rebuild
 - Category 1, unaffected shelters assessed is not represented

Date sources:
 Administrative boundaries: GADM 2009
 Shelter data: Inter-Agency Shelter Assessment
 Projection: WGS 1984 UTM Zone 51N
 GLIDE number: FL-2011-000204-PVL
 File: REACH_PVL_WASH_DAMCATEG_30JAN2012
 Contact: reach.mapping@impact-initiatives.org

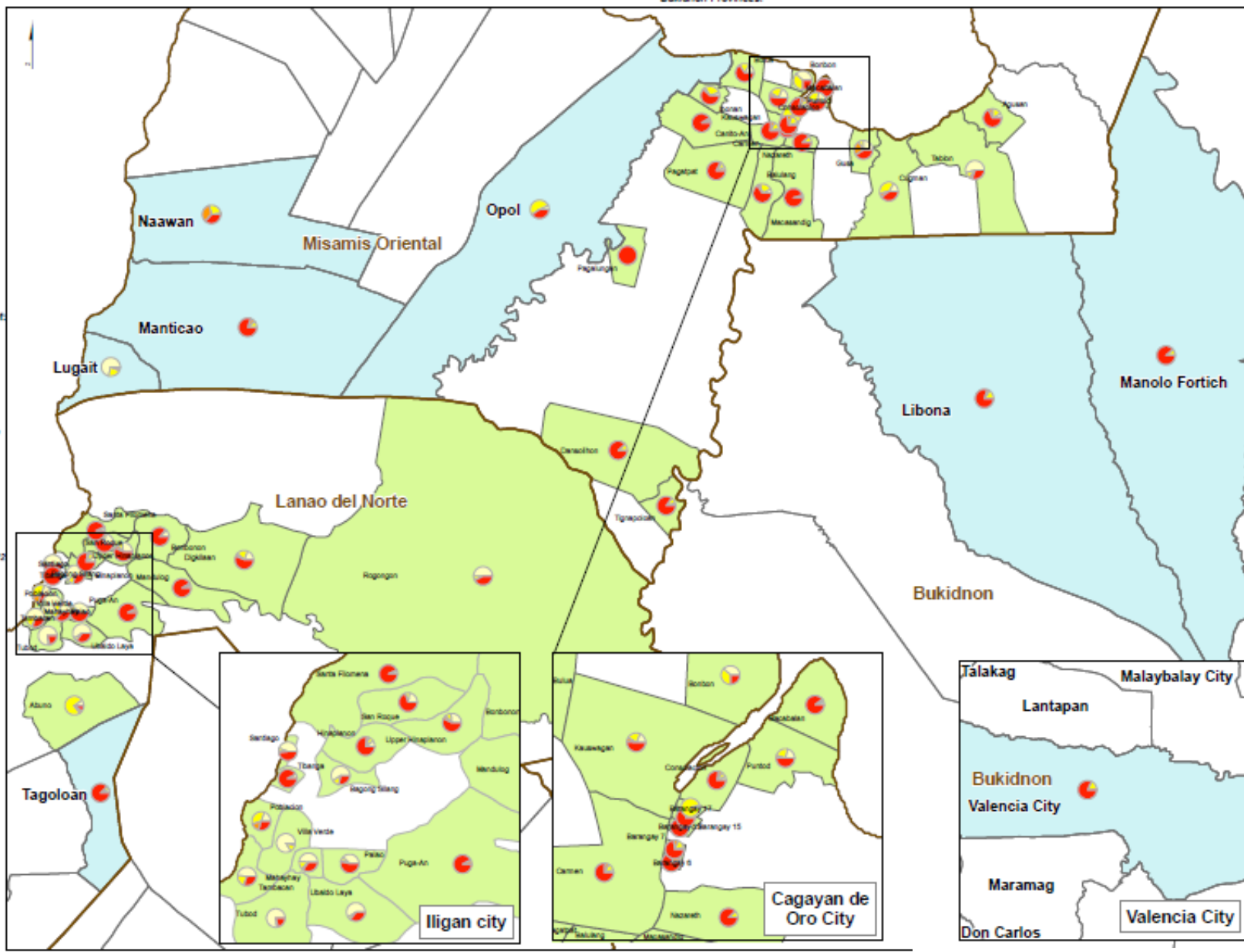
Map Scale for A3: 1:210 000

Note: Data, designations and boundaries contained on this map are not warranted to error-free and do not imply acceptance by the REACH partners mentioned on this map. This document has been produced with the financial assistance of the European Commission. The views expressed herein should not be taken, in any way, to reflect the official opinion of the European Commission.

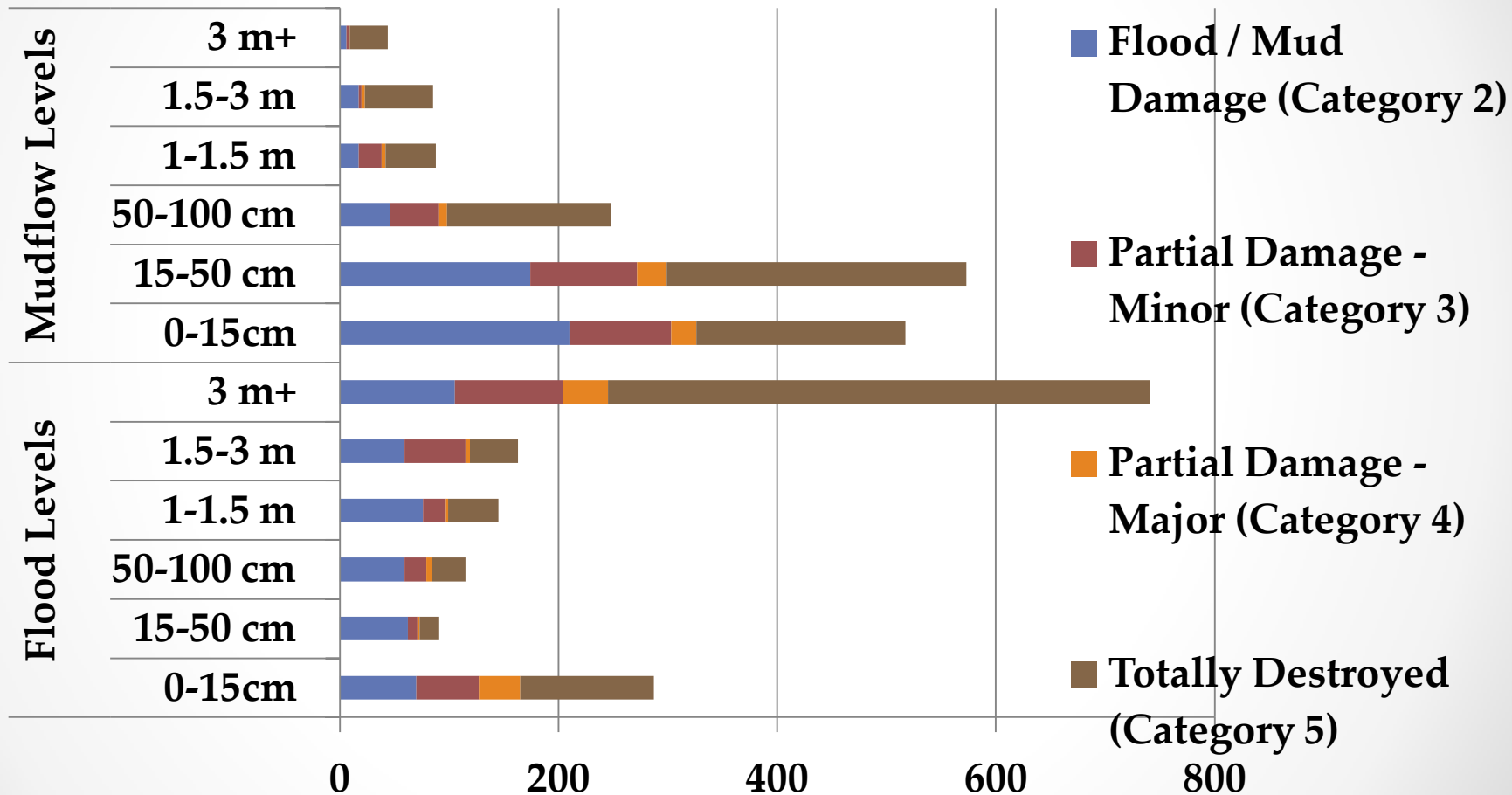
A product of **REACH** A program of **IMPACT** Initiatives
 www.reach-initiatives.org

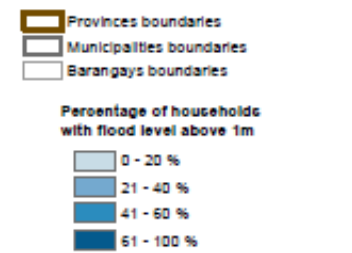
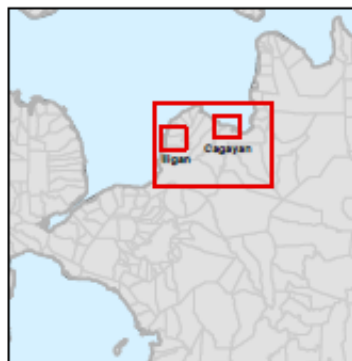
In partnership with **UNOSAT** **ACTED**

Funded by **EUROPEAN COMMISSION**

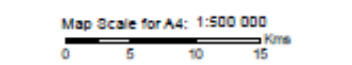


Flood / Mud Levels





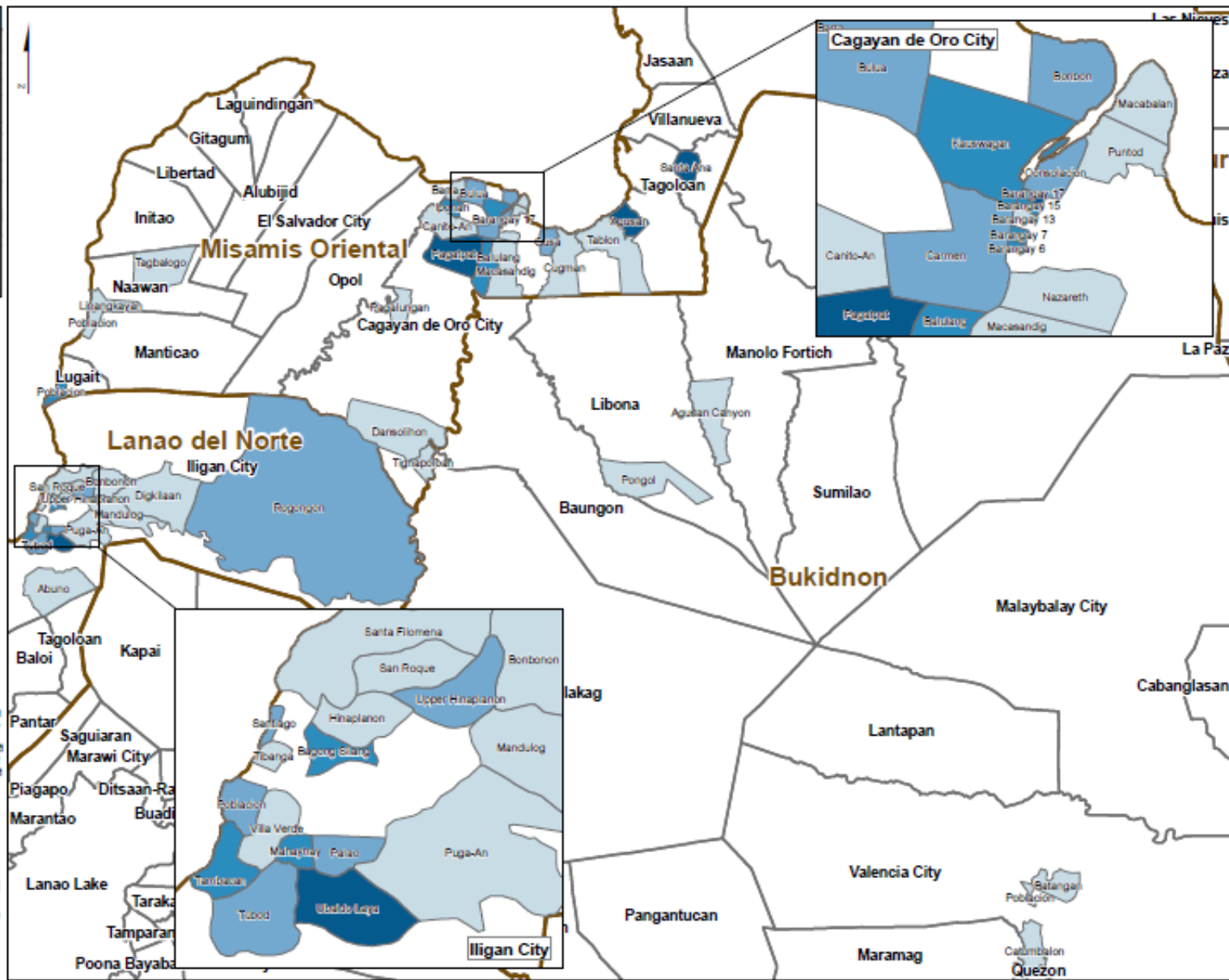
Data sources:
 Administrative boundaries: GADM 2009
 Shelter data: Inter-Agency Shelter Assessment
 Projection: WGS 1984 UTM Zone 51N
 GLIDE number: FL-2011-000204-PHL
 File: REACH_PHL_WASHI_flood_30JAN2012
 Contact: reach.mapping@impact-initiatives.org



Note: Data, designations and boundaries contained on this map are not warranted to error-free and do not imply acceptance by the REACH partners mentioned in this map. This document has been produced with the financial assistance of the European Commission. The views expressed herein should not be taken, in any way, to reflect the official opinion of the European Commission.

A product of **REACH** www.reach-initiative.org
 In partnership with **IMPACT Initiatives**

Funded by **UNSAT** **ACTED** **EUROPEAN COMMISSION**





Damage assessment of the urban area affected by TS Sendong (16 to 18 Dec 2011); this analysis following damage analysis is based on satellite imagery from 19.12.2011 and pre-disaster satellite imagery from 05.03.2010

provided by UNOSAT. The figures on building damages likely represent minimum estimates. Actual damages could be higher. This is an initial damage assessment and has not yet been validated on the ground.

Satellite Analysis

- Satellite Imagery
- Analysis of destruction (pre/post satellites)
- In areas of No Build Zones



Online Interactive WebMap

<http://www.reach-initiative.org/philippines>



Tropical Storm Sendong 2011

ShelterCluster.org

Coordinating Humanitarian Shelter



Discussion Points

- MIRA has a lot of buy-in from the stakeholders
 - Trial showed the potential of MIRA; can be well integrated with cluster assessments; build on lessons
 - How do we build the capacity of clusters for MIRA?
- The value of the tool is based on its use
 - The high level of buy-in by shelter cluster members demonstrates the value to their operations
 - Timeframe is important to collect data ASAP
 - Earlier deployment, more impact on operations and flash appeal
- Ongoing support after field operations finish
 - Continued engagement with field / cluster
 - Assess the value and use of the tools



Tropical Storm Sendong 2011

ShelterCluster.org

Coordinating Humanitarian Shelter

