

4
p.-

All structures, new, adapted, or renovated, for the sheltering of displaced populations is compliant with fire safety standards and regulations.

Displaced people have access to sufficient quantity and quality of water for drinking, cooking, and for personal and domestic hygiene. They also have access to a sufficient number of toilets, which are appropriate and acceptable. Such facilities are sufficiently close to their sleeping arrangements and can be rapidly and securely accessed at all times of day and night.

13
p.-

Space planning and services provided within transit and reception centres minimises risks and vulnerabilities identified and allows their mitigation while ensuring the personal security, the privacy and the dignity of displaced people in the undertaking of their daily activities.

5
p.-

12
p.-

Residents have access to covered sleeping and living spaces allowing for sufficient lighting, and enabling the undertaking of essential family and livelihoods activities.

Displaced people live in an environment free from solid waste, including medical waste, and have access to practical and effective means to eliminate domestic waste.

14
p.-

European Emergency

Sheltering Standards

3
p.-

Physical barriers are avoided or eliminated and persons with disabilities or reduced mobility have access to transit and reception centres, as well as to all services and to all information there

The
1
planning of temporary communal settlements or collective centres enables a safe and secure use by the displaced population of all accommodation and essential services. Special care is taken when hosting families with children in order to preserve their integrity.

Temporary communal settlements have sufficient covered indoor and outdoor spaces to cater for essential services. Such spaces provide sufficient dignity, thermal comfort, ventilation, protection and safety to undertake daily activities.

6
p.-

11
p.-

Residents have access to covered sleeping and living spaces allowing for a good ventilation and protection from climate rigours, while enabling the undertaking of essential family and livelihoods activities.

Displaced people have access to a sufficient quantity of clothes, blankets, bed sheets, hygiene items, cooking, and eating utensils if necessary, allowing their personal hygiene, comfort, dignity, health and well-being.

15
p.-

10
p.-

Residents have access to covered sleeping and living spaces allowing for thermal comfort, well-being and protection from climate rigours, enabling essential family and livelihoods activities.

Residents have access to a good telephone communication network, a broadband Internet connection, and a daily mail service.

8
p.-

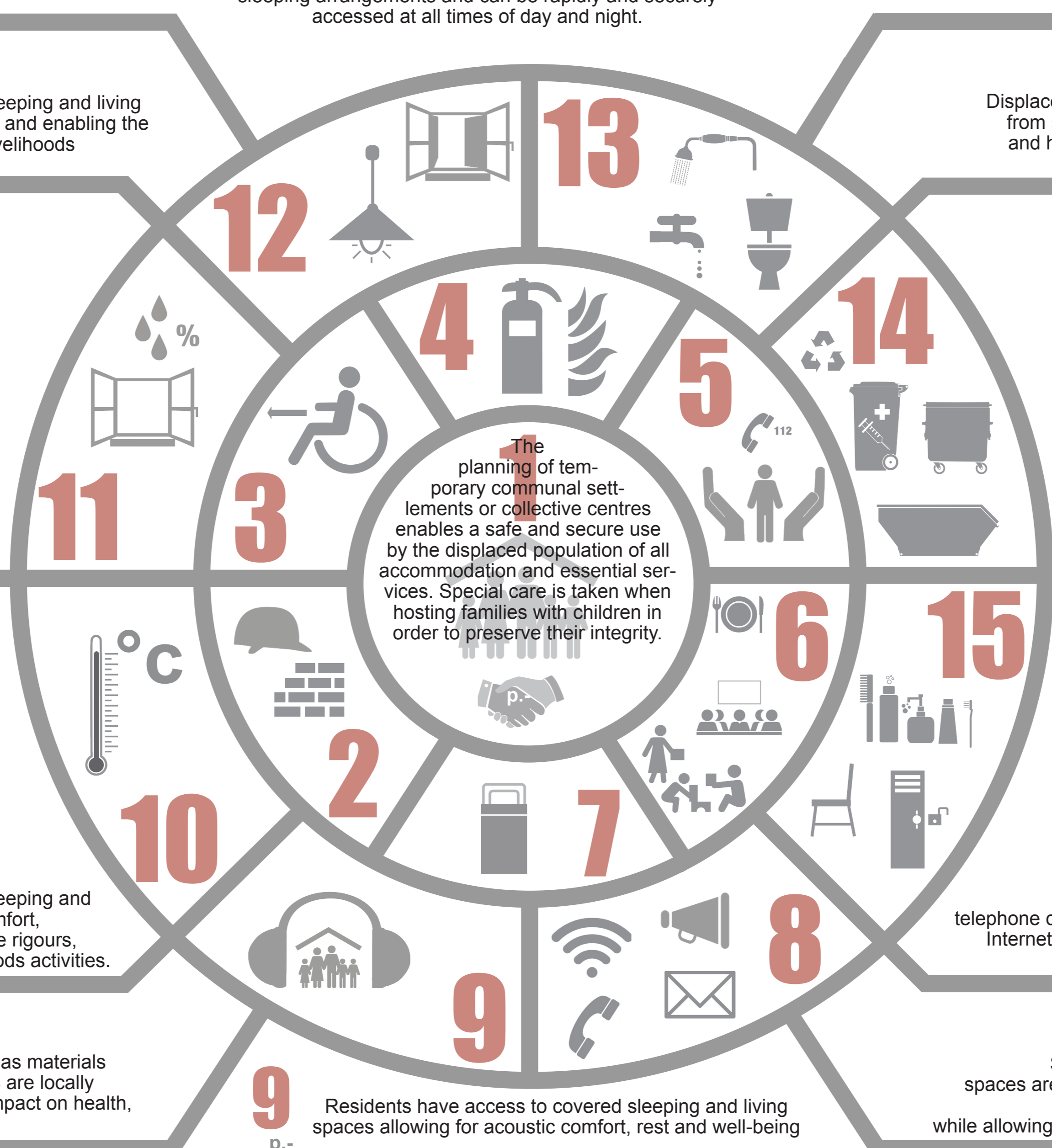
2
p.-

Shelter and habitat solutions, as well as materials sourcing and construction techniques are locally accepted and minimise all adverse impact on health, security, and local environment.

Residents have access to covered sleeping and living spaces allowing for acoustic comfort, rest and well-being

Sufficient covered sleeping and living spaces are available to residents. Such spaces provide privacy, security and health, while allowing basic family and livelihood activities.

7
p.-



4

Structure Reaction and adequate fire resistance

Security exits ≥ 2

Main living spaces / other spaces Fire and smoke detectors and alarm (visual and sound)

100 L/person/day
60% potable

1 tap/6 - 10person
≤ 50m from sleeping areas
men/women

1 toilet/10pers.M/W
≤ 50m from sleeping areas
men/women

1 shower/12pers. ♿

1 machine+drier/
10-12pers.

13

Fenced sites; emergency call system; security staff presence 24/7; restricted access for outsiders

Separate rooms men/women
1 locker/family or pers.

Separate family rooms men/women
1 locker/fam or pers.

Separate men/women
Lockable from the inside

Separate M/W
Lockable from the inside

5

12

Glazed area
≥ 1/10 floor area

Artificial lighting
see table page 74

100 L/person/day
60% potable

1 sink/5 - 10person
≤ 20m from sleeping areas
men/women

1 toilette/fam. or 5pers. H/F
≤ 20m from sleeping area
men/women

1 shower/8pers. ♿

1 machine+drier/
8-10pers.

Quantity > 1,2kg/day/person
Communal containers < 100m from shelters
Waste bins > 1 container 240L/30people
Emptying outdoor bins: >twice/week;
Emptying indoor bins: once/day
Medical waste: seperate collection point
Construction waste: seperate collection point

14

3

Slope ≤ 2% ÷ 5%
or 10% with landings every 5m

10% Accessible ♿ ≤ 50m

20% Accessible ♿ ≤ 30m

10% Accessible ♿ ≤ 50m

20% Accessible ♿ ≤ 30m

100% Accessible with handrails

100% Accessible with handrails

Provided in various formats accessible to people with different types of disabilities or illiterate.

100 L/person/day
60% potable

1 tap/6 - 10person
≤ 50m from sleeping areas
men/women

1 toilet/10pers.M/W
≤ 50m from sleeping areas
men/women

1 shower/12pers. ♿

1 machine+drier/
10-12pers.

13

Quantity > 1,2kg/day/person
Communal containers < 100m from shelters
Waste bins > 1 container 240L/30people
Emptying outdoor bins: >twice/week;
Emptying indoor bins: once/day
Medical waste: seperate collection point
Construction waste: seperate collection point

6

Legend : ● Transit centre
■ Reception centre

11

3

4

1

5

14

15

≥ 2,50 m² / pers.

≥ 20 m²

≥ 150

80 ÷ 100 m²
0,8 ÷ 1 m² / pers.

≥ 60 m²
(2 m² / pers.
min. 30 pers.)

2 m² / child

45 m²
(1,5 m² / pers.
min. 30 pers.)

60 m²
(2 m² / pers.
min. 30 pers.)

See indicators
page xx-xx

Access to info
Desk/notice board

WiFi
In the structure or/adjacent
public area min. 4times/
week.

Access to telephone
Daily; 1 telephone/20people
2 booths of 1,5-2 m² for private calls

Sockets
1x/2fam. 1x/10pers.

Sleeping surface
≥ 6 m²/pers.
1-2 fam./room
dormitories ≤ 10 pers.

Height (sleeping space)
1,20 m/pers.
Bunk beds = max
2 bunks

15

8

10

Living areas
21°C

Other spaces
18°C

Medical care spaces
≥ 23°C

Warehouses
5°C

Capacity
≤ 100 people

Surface per person
≥ 45 m²/person
(all services and facilities)

Room height
≥ 2,4 m
(bunk beds = max 2
bunks)

6

Access to info
Dedicated office

WiFi
In the structure during
daytime

Sockets
1x/2fam. 1x/10pers.

Sleeping surface
≥ 8 m²/pers.
1 fam./room or
≤ 4 pers./room

Height (sleeping space)
1,20 m/pers.
Bunk beds = max
2 bunks

7

2

Building codes and quality
All structure is realised in accordance with standards, local techniques and proceedings except in case of derogation

Material's safety and environment
Compliance with regulation on disposal of unauthorised construction materials; careful choice of materials and paints; reduction of negative impacts on the environment

Noise level
Exterior: max 85dB Living areas: ≤ 35dB;
sleeping areas: ≤ 35dB;
Kitchens/water and sanitation areas: ≤ 50dB

8

Access to info
Dedicated office

Sockets
1x/2fam. 1x/10pers.

Sleeping surface
≥ 8 m²/pers.
1 fam./room or
≤ 4 pers./room

Height (sleeping space)
1,20 m/pers.
Bunk beds = max
2 bunks

7