



**Shelter Cluster Yemen**  
ShelterCluster.org  
Coordinating Humanitarian Shelter

# Shelter Cluster Monthly Meeting

6<sup>th</sup> April 2023

10:00 AM – 11:00 AM

1. Review of Previous Meeting Action Points - 5 minutes
2. Cluster Coordination Brief (Global Cluster Meeting, Fund Mapping, Cluster co-chair in Aden and National Level, Rotation of Meetings, Cross-Cutting Issues, TWiG Update ) – 20 minutes
3. 2023 1st Standard Allocation – 10 minutes
4. Flood Update - 10 minutes
5. Partners operational challenges – 10 minutes
6. AOB – 5 minutes

No	Description of Action Point	By Whom	Update	Status
1	SCT to update the activity matrix and include the tools associated for each indicator	SCT	The activity matrix is ready and will be circulated with all partners.	Ongoing
2	SCT to develop the CCPM action plan	SCT	The plan was circulated.	Done
3	SCT to plan for a donor conference to mobilize resources for the cluster response	SCT		Pending
4	Cross cutting issues to be included as an outstanding agenda for every Cluster meeting	CCI FBs	An update will be presented in today's meeting	Ongoing

# Yemen Humanitarian Fund

## 1<sup>st</sup> Standard Allocation 2023

15 May 2023

---



OCHA

# Funding overview

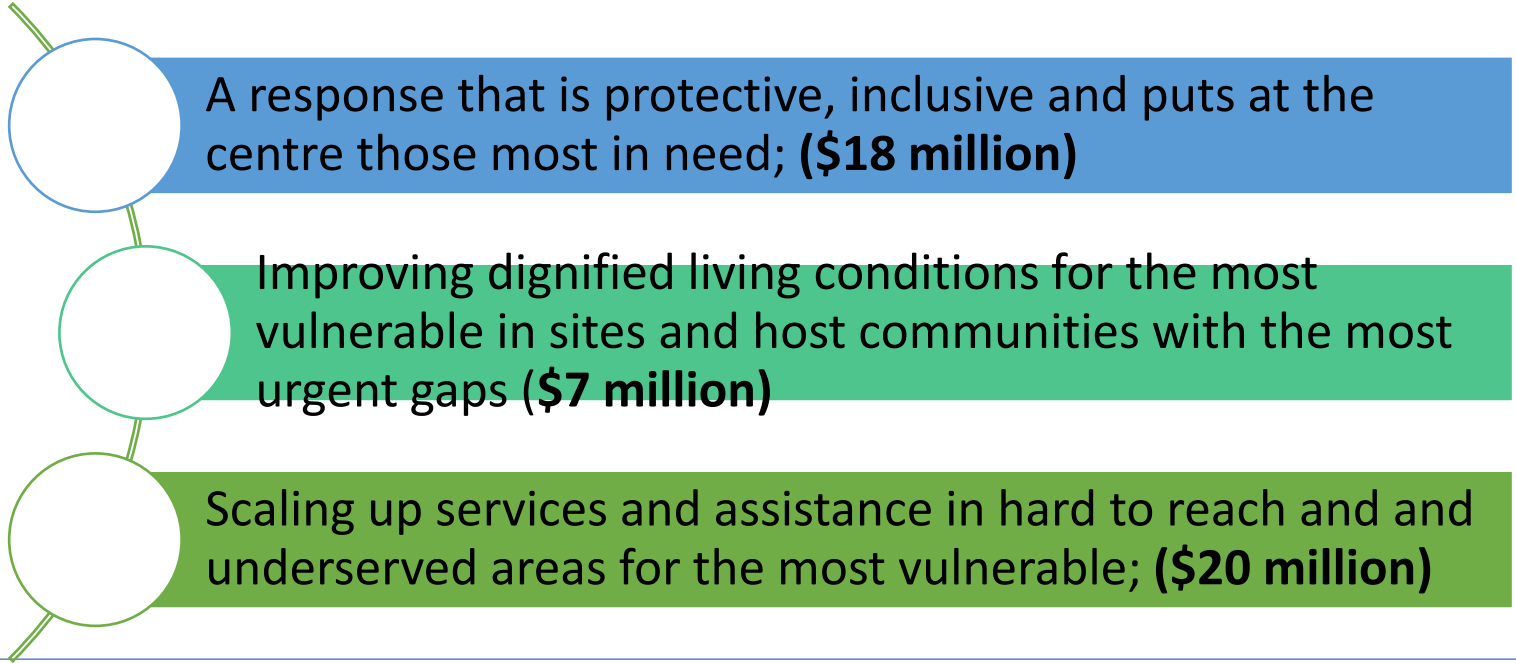
	Undertaken				Planned
	2022	2022	2023	CERF RR Famine	2023
<b>Allocation</b>	CERF UFE	YHF RA3	YHF RA1		YHF SA1
<b>Amount</b>	\$20 million	\$30 million	\$ 8 million	\$18 million	approx. \$45 million
<b>Clusters</b>	CCCM, FSAC, HEA, NUT, PRO,S/NFI, WASH		CCCM, Shelter/NFI, WASH, CCCM	FSAC, HEA, NUT, WASH,	Pillar approach to strengthen impact and complementarity

	CERF UFE	2022	2023	2023	TOTAL
		YHF RA3	YHF RA1	CERF RR	
<b>CCCM</b>	2	1.8	1.3	0	5.1
<b>EDU</b>		2.2		0	2.2
<b>FSAC</b>	2	2.6		2.9	7.5
<b>HEA</b>	2	5.3		4.5	11.8
<b>NUT</b>	5	2		5.8	12.8
<b>PRO</b>	0.75	3.1	0.3	0	4.15
<b>RRM</b>		2.8	1.45	0	4.25
<b>RMMS</b>		0.75		0	0.75
<b>S/NFIs</b>	4	3.6	3.2	0	10.7
<b>WASH</b>	4.25	5.7	1.6	1.9	13.45
<b>MPCA</b>				2.9	2.9



# YHF SA1- Strategic pillars

**Purpose: maximise impact through area-based approach**



# Outcome-level interventions linked to pillars

## Pillar 1

- Ensuring centrality of protection across the Allocation
- Providing livelihoods opportunities (including through safe spaces and addressing GBV)
- Provision of education and child protection
- Mine action response for NGOs in DFA and IRG areas

## Pillar 2

- Camp coordination and shelter provision, including sustainable approaches

## Pillar 3

- Provision of lifesaving including comprehensive health services and WASH
- Taiz office (establishment of new office)
- Area assessment and MCLA in Houthi-controlled areas

### *What is expected from clusters?*

*1- Joint identification of locations – less spreadsheets and consult field !*

*2- Prioritised activities*



# Next steps

Activity	Responsibility	Timeline
Prioritisation (geographical and activities)	OCHA and Clusters	By 21 May
Finalization of Allocation Strategy	HFU	25 May
Approval of Allocation Strategy	HFU and AB	26-29 May
GMS opening and project proposals' submission	Partners	30 May-13 June
Proposal review	HFU and clusters	15-22 June
Disbursement	HFU	By 2 <sup>nd</sup> week of July the latest (due to Eid)



Governorate	District
Abyan	Lawdar
Al Bayda	Ash Sharyah
Al Bayda	Rada'
Al Bayda	Al Bayda City
Al Dhale'a	Damt
Al Dhale'a	Qa'atbah
Al Dhale'a	Juban
Al Hudaydah	Ad Durayhimi
Al Hudaydah	At Tuhayat
Al Hudaydah	Al Khawkhah
Al Hudaydah	Hays
Al Jawf	Kharab Al Marashi
Al Jawf	Al Hazm
Al Jawf	Khabb wa ash Sha'af
Al Jawf	Al Ghayl
Al Jawf	Al Maton
Al Jawf	Al Matammah
Al Maharah	Al Masilah
Al Mahwit	Al Khabt
Al Mahwit	Al Mahwait
Al Mahwit	Al Mahwait City
Al Mahwit	Bani Sa'd
Amanat Al Asimah	Az'zal
Amanat Al Asimah	Shu'aub
Amanat Al Asimah	Ma'ain
Amanat Al Asimah	Bani Al Harith
Amran	Khamir
Amran	Raydah
Dhamar	Jahran
Dhamar	Dawran Aness
Dhamar	Al Manar
Hadramaut	
Hajjah	Abs
Hajjah	Aslem
Hajjah	Khayran Al Muharraq
Hajjah	Kushar
Hajjah	Mustaba
Hajjah	Washhah
Hajjah	Al Maghrabah

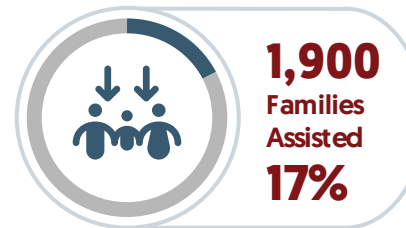
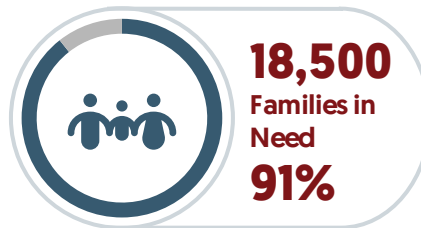
Governorate	District
Ibb	Jiblah
Ibb	Ba'adan
Ibb	Al Dhihar
Ibb	Al Mashannah
Ibb	Ibb
Ibb	Dhi As Sufal
Lahj	Al Had
Lahj	Tuban
Marib	Raghwan
Marib	Marib City
Marib	Marib
Marib	Sirwah
Marib	Harib
Marib	Majzar
Marib	Rahabah
Rayma	Al Jafariyah
Sa'ada	Monabbih
Sa'ada	Qatabir
Sa'ada	Al Hashwah
Sa'ada	Al Dhaheer
Sa'ada	Razih
Sa'ada	Sa'adah
Sa'ada	Saqayn
Sa'ada	Shada'a
Sa'ada	As Safra
Sa'ada	Sahar
Sana'a	Nihm
Sana'a	Bani Matar
Sana'a	Hamdan
Sana'a	Bilad Ar Rus
Sana'a	Bani Hushaysh
Shabwa	Usaylan
Shabwa	Bayhan
Shabwa	Ataq
Shabwa	Rudum
Taizz	Al Mukha
Taizz	Al Ma'afer
Taizz	Maqbanah
Taizz	Salah
Taizz	Dimnat Khadir
Taizz	At Ta'iziyah
Taizz	Mawiyah

**33,000**

Families Affected (Reported)

**11,000**

Families Affected (Verified)

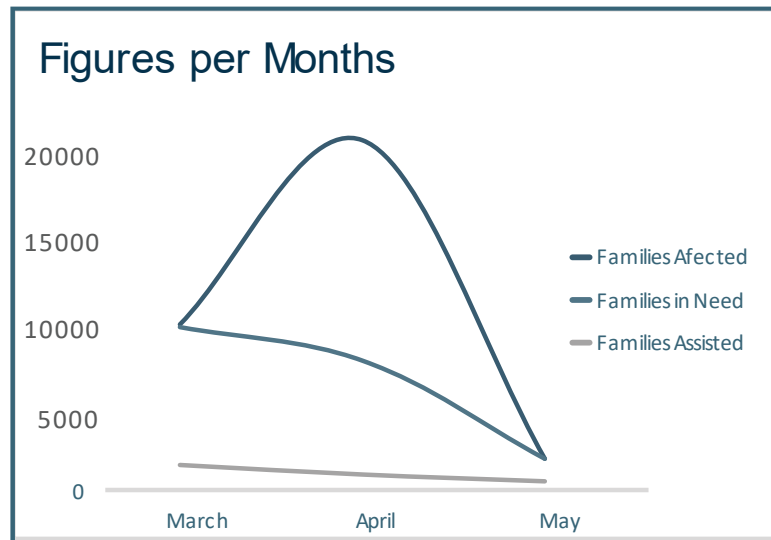


**17**

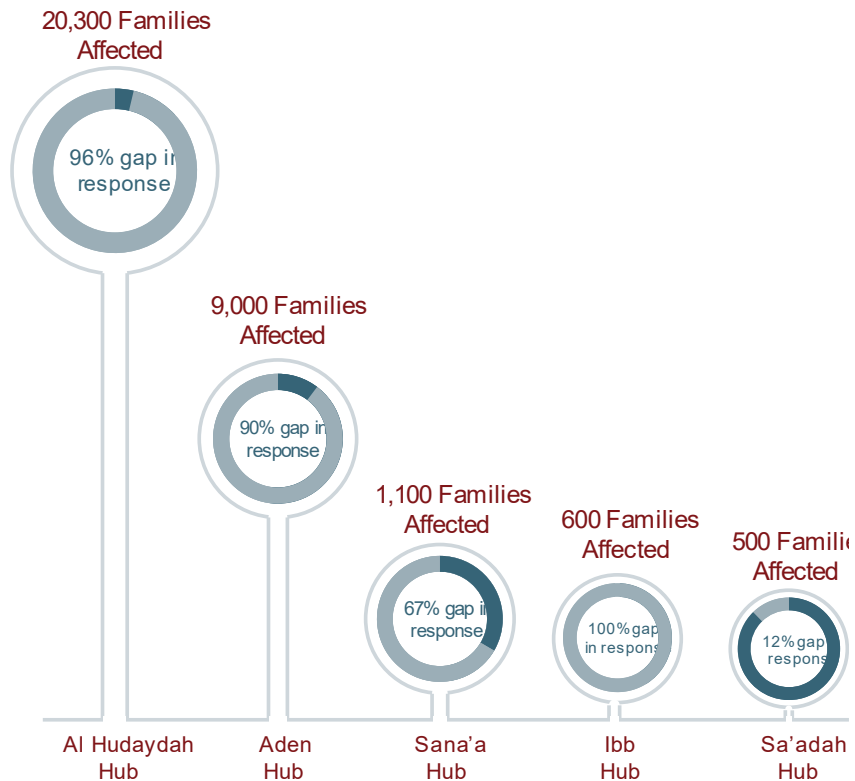
Governorates Impacted

**74**

Districts Impacted



## Hub Level Figures







# Thank You

More Info.:

<https://www.sheltercluster.org/response/yemen>

Follow us on Twitter:

@ShelterClustYE