



MYANMAR SHELTER CLUSTER

Coordinating Humanitarian Shelter and Settlements

Rapid Shelter/NFI Needs Assessment of Temporary Shelters in Protracted IDP Camps Sittwe and **Pauktaw** Townships - Rakhine State - Myanmar Sep 2024



Shelter from Maw Thae Ngar IDP camp – Sittwe township after Mocha cyclone: Some families dismantled their own rooms and set up makeshift shelters as the conditions inside the longhouse were not any more conducive for safe life.

Foreword

“Along with ongoing Armed Conflict since November 2023 and despite the restrictions/limitations imposed, the cluster managed to receive authorization to conduct this essential exercise in 2024. The Rapid Shelter/NFI Needs Assessment was entirely designed, by competent local colleagues and rolled out/assessed by trained competent camp-based staff. Trained camp-based staff from international NGOs conducted the assessment in close collaboration with Camp Management Committees and representatives of IDP communities. As a result of their efforts, the cluster acquired a very detailed, updated, and structured dataset that allows us to keep track of results, cross-validate planned activities, and fundraise for very much-needed resources.

This would have not been possible without the professionalism and enthusiasm of national staff members and camp-based staff who are always dedicated to their daily activities despite all going through a very challenging time. They relentlessly commit their time and energy to working under the boiling sun or torrential rains; they work hard, even if forced conscription and other arbitrary arrests affect themselves and their loved ones.

Thank you all for your admirable dedication and unwavering support to help those in need despite you are going through a very tough situation!”

Sviatoslav Savchuk
CCCM/Shelter Coordination Officer

Table of Contents

Foreword	2
Shelter Assessment in Central Rakhine State	5
1. Summary of findings	5
2. Background	9
3. Scope, objectives and expected results	9
4. Methodology and technical criteria	10
a) Methodology	10
b) Technical criteria	10
5. Examples of damages and status of RSNA 2024	11
6. Data Collection Team	12
a) Assessment Form _English Version & Myanmar Version	12
7. Review of response from 2022 to 2024	13
8. Shelter Needs Assessment results - 2024	14
9. Key findings	15
10. Financial Gaps	16
a) Breakdown figures by Priorities	17
b) Figures by shelter designs and townships	18
c) Breakdown table of estimated costs per camp	18
11 Important shelter considerations	19
a) The necessity of shelter support	19
b) The urgent call for additional land	19
NFI Assessment	21
1. Background of the NFI assessment	21
2. Methodology	22
a) The sampling size	22
b) The questionnaire template	23
c) Full core-relief NFI kit (Permanent)	24
Main findings	25
1. Top 3 prioritized non-food items that families need the most.	25
2. Provided NFI assistance toward needs – gaps and satisfactory levels.	26
3. Quality of provided items.	26
4. Negative impact due to the delay in the provision of NFIs.	27
5. Preferred type of modality, cash vs. in-kind	28

6. Selling items from provided kits to meet other needs.....	28
Financial gap and challenges	28
a) The financial gap in a best-case scenario	29
b) The financial gap in a worth-case scenario	29
Challenges.....	30
Summary of the NFI assessment	31
Annexes	32
Annex 1 - 2022 Design and Bill of Quantities for Temporary “short leg” shelter	32
Annex 2- 2022 Design and Bill of Quantities of Temporary Long Leg Shelter	39
Annex 3- 2022 Design and Bill of Quantities of Temporary 10 Units Short leg shelter.....	47

Shelter Assessment in Central Rakhine State

1. Summary of findings

This report provides a summary of findings from the exercise conducted by Shelter partners in May 2024 in 16 camps, located in Sittwe and Pauktaw townships, hosting stateless people displaced following communal violence in 2012.

Shelter Cluster partners conduct rapid shelter/NFI needs assessments every year to prioritize shelter reconstruction activities.

The assessment was conducted through in-person observation of all longhouses by shelter cluster engineers' on-the-job orientation to camp-based staff using a standardized assessment form. The exercise was focused on longhouses in 16 camps located in Sittwe (12) and Pauktaw (4) townships. Longhouses are 8 units and 10 units temporary shelters that host between 40 and 50 individuals each. Camps with individual shelters (Nget Chaung 1 (NC1) which is not able to conduct this exercise due to access challenges and security concerns.

A total of **1,901** shelters have been identified as in need of reconstruction. The methodology allows for a breakdown of the first, second priority, and urgent need of Mega tarp longhouses for the rainy season as outlined in Table 1.

Table 1

Summary Identified Shelter Reconstruction Needs Breakdown Figures of Shelter Need Assessment in 2024(May-June)

19.09.2024

Sn.	Sittwe Camps/sites	Long house remaining qty	Functioning: No action required	Need1: Reconstruction Priority 1	Need2: Reconstruction Priority 2	Urgent need of Mega tarp for rainy season	Completed Planned+ ongoing activity	P1 gap	Status in SNA 2024
1	Basara(BSA)	52	8	4	40	44	5	4	Assessed
2	Baw Du Pha 1(BDP1)	127	20	59	48	19	68	21	Assessed
3	Baw Du Pha 2(BDP2)	164	28	38	98	74	39	18	Assessed
4	Dar Paing(DP)	181	60	24	97	98	122	0	Assessed
5	Khaung Doke Khar 1(KDK1)	50	17	2	31	31	12	2	Assessed
6	Khaung Doke Khar 2(KDK2)	50	6	21	23	26	6	21	Assessed
7	Maw Thi Nyar(MTN)	82	28	33	21	21	27	6	Assessed
8	Ohn Taw Chay(OTC)	83	11	36	36	58	35	13	Assessed
9	Ohn Taw Gyi North(OTGN)	341	0	88	253	253	35	59	Assessed
10	Ohn Taw Gyi South(OTGS)	285	55	49	179	210	81	25	Assessed
11	Say Tha Mar Gyi(STMG)	300	11	97	189	230	51	97	Assessed
12	Thet Kae Pyin(TKP)	125	15	11	99	102	0	11	Assessed
	Thae Chaung(TC)*	0							NA, not assessed
Sittwe Total		1840	259	462	1114	1166	481	277	
Sn.	Pauktaw Camps/sites	Long house remaining qty	Functioning: No action required	Need1: Reconstruction Priority 1	Need2: Reconstruction Priority 2	Urgent need of Mega tarp for rainy season	Completed Planned+ ongoing activity	P1 gap	Status in SNA 2024
1	Ah Nauk Yei(ANY)	97	19	26	52	78	0	26	Assessed
2	Nget Chaung 2(NC2)	87	22	27	38	38	0	27	Assessed
3	Kyein Ni Pyin(KNP)	82	37	47	35	37	0	47	Assessed
4	Sin Tet Maw(STM)	100	87	24	76	59	6	18	Assessed
	Nget Chaung 1(NC1)*	0							NA, not assessed
Pauktaw Total		366	165	124	201	212	6	118	
Total of assessed 16 camps		2206	424	586	1315	1378	487	395	

Digest of SNA 2024	
Needs qty in townships	
Sittwe-Need Priority1	462
Sittwe-Need Priority2	1114
Pauktaw-Need Priority1	124
Pauktaw-Need Priority2	201
Sittwe+Pauktaw total	1901

- 586 longhouses were identified in urgent need of **reconstruction Priority level 1**.
- 1315 longhouses were identified in need of **reconstruction Priority level 2**.
- 1378 longhouses were identified in need of **urgent Mega tarp Response** for rainy season.

The Shelter Cluster will continue to support temporary shelters until durable solutions are identified, continuing its efforts targeted towards enhancing shelter designs with the aim of improving security, dignity, and privacy as well as thermal resistance of shelters. The last upgrades in 2022 include full timber frame, increased room height, space under floor, modified window design and numbers, iron mesh installation to increase durability and safety of shelters over time.

However, major challenges to the provision of adequate and dignified shelter conditions in camps remain to date and include:

- 1) **Lack of space, overcrowding:** camps were constructed as a temporary solution by the Rakhine State Government for a population of 120,000 IDPs in 2012-2013. Due to the natural population growth (est. 1.5%) and additional displacements in recent years, the current number of people in camps stands at 150,129. No additional land has been allocated yet to construct necessary additional shelters despite constant advocacy. Therefore, a lot of makeshift and extension in front of shelters built by extended families. Building of extension

in front of the shelter impacts the narrow space between shelters and structural weakness to newly completed shelter reconstructions as by using old salvage materials and poor-quality works by families.

- 2) **Unclear land ownership:** Increasingly, alleged land-use-right-holders impede the works of reconstruction and rehabilitation of shelters and other camps facilities claiming ownership and demanding compensation from humanitarian actors, which oftentimes delays work completion and adds complexity to the task. Constant advocacy efforts over the years did not result in any clarity.
- 3) **Corruption and extortion:** impunity within different levels of public service in Rakhine further harms stateless people who live there. Fees and payments to IDPs or to contractors imposed by Camp Management Committees, Village Administrators, Police, Immigration, Army and other stakeholders negatively affect the quality of the work performed. Despite regular and strict monitoring by partners and the creation of necessary Standard Operating Procedures by Shelter/NFI/CCCM Cluster, incidents of corruption and extortion are still part of the reality in Rakhine camps.
- 4) **Political complexities and conscription:** the situation in Rakhine (Central) is worsening with ongoing armed clashes in different Townships. Security conditions are deteriorating with arbitrary arrests, landmine planting, and increased military activities, including the occupation of NGO buildings at an IDP camp in Sittwe. Rapid seizing of military bases, armed clashes near and inside of major towns followed by civilian casualties, loss of properties and damages to critical infrastructure continue to take place in Rakhine. Moreover, SAC is facing multiple attacks simultaneously from different directions. It forces commanders to increase the number of troops and divisions by conducting conscription campaigns. Therefore, Rohingya IDPs have been forcibly recruited to join the military training and later they are transferred to join them in fighting against AA. Displaced Rohingyas and Kaman being conscripted, and CMC leaders were told to recruit more IDP youths to join the military training. The CMCs have no chance to deny the order resulting in threatens to family members, confiscation of ration cards or eviction orders to people who live in the camps. Some IDP youths are trying to avoid military conscription by fleeing from their homes hence leading to increased irregular movement to neighboring countries linking risks of human trafficking and smuggling.
- 5) **Funding Reduction:**
There is a significant funding reduction that partners experienced in 2024 in relation to the shelter assistance in camps. The newly arisen urgent needs occurred after drastic events of the year – the cyclone Mocha (that hit the region in May) followed by the resumption of military clashes in November. While the needs were growing faster than an ability of humanitarian actors to provide lifesaving assistance, people in camps became more reliant on the humanitarian support – food shortages, newly introduced movement restrictions, cut supply chains, damaged homes, etc. Being a technically complex intervention that requires different types of resources, a solid project management, follow-ups from the staff on the ground and supply of materials, made the intervention a one that was impacted heavily.

The mid-year analysis revealed a level of implementation that equals to 42% of the targeted number.

Compared to the previous years, it stands to 80% from the achievement of 2023 and to only 22% out of the achievement of 2021. Financially, partners utilized \$1,1 mln for reconstructions comparing to \$1.17mln and \$3,9 mln from 2023 and 2021 respectively (factoring inflation).

The Cluster took into account newly occurred urgent needs in emergency shelter assistance in camps and sites, the inability to provide good quality reconstructions in almost any camp, and partners' ability to secure and utilize funds to provide good quality shelter assistance in terms of reconstructions. Thus, it was decided to reprioritize shelter reconstructions in favor of emergency shelter assistance.

- 6) **Access restriction:** the fights intensified and are widely spreading in different townships. SAC closed all water and roadways for travel and transportation of goods. Main roads from Yangon to Sittwe are closed, and patrolling makes the actual transportation of humanitarian goods by roads impossible. SAC has conducted area clearance operations in different Rakhine villages and forcefully evicted people from their homes in 32 villages near Sittwe in June 2024. The SAC has practiced a four-cuts strategy which involves cordoning off by evicting the villagers, the destruction of buildings, confiscation, or destruction of food. The Mobile networks and the internet have been shut down. The markets are getting depleted and it is extremely challenging to find even basic items such as medicine, hygiene and food. Regular activities of humanitarian organizations require a TA approval however, partners are struggling to obtain one. The increased number of checkpoints placed near IDP camps makes people struggle to reach major towns. Reportedly, they face threats, extortion of goods and abuse while passing the checkpoints.

2. Background

This is the 6th shelter/NFI assessment in camps hosting Stateless IDPs and is the product of a collaborative effort of Shelter Cluster partners, led by UNHCR, and with the support of INGOs field-based staff.

The first joint shelter assessment was conducted in June 2017, in response to Cyclone Mora; the second was in January 2018; the third was in February 2019, the fourth was in May 2021, the fifth was in May 2023 and the sixth was in May 2024. There was no shelter joint assessment in 2020 due to COVID-19 preventive restrictions. All previous iterations were conducted jointly with representatives of the General Administration Department except the assessments of 2021, 2023 and 2024.

Shelters were assessed by in-person visits using standardized forms/criteria endorsed by the Rakhine State Shelter Cluster to identify:

- a) shelters requiring urgent reconstruction (priority 1 – more than 75% damaged) due to collapse, structurally unsound or being at unrepairable stage,
- b) shelters requiring reconstruction (priority 2 – structure intact with damage to roofs, floors and walls).

3. Scope, objectives and expected results

Scope: All temporary shelters (longhouses) in 16 camps:

- 12 IDP camps in Sittwe township [Basara (BSR), Baw Du Pha 1 (BDP1), Baw Du Pha 2 (BDP2), Dar Paing (DP), Khaung Doke Khar 1 (KDK1), Khaung Doke Khar 2 (KDK2), Maw Thi Nyar (MTN), Ohn Taw Chay (OTC), Ohn Taw Gyi North (OTGN), Ohn Taw Gyi South (OTGS), Say Tha Mar Gyi (STMG), Thet Kae Pyin (TKP)]
- 4 camps in Pauktaw township Sin Tet Maw (STM), Kyein Ni Pyin (KNP), Ah Nauk Yei (ANY) and Nget Chaung 2 (NC2)].

Objective 1: To identify and prioritize the reconstruction needs of temporary shelters in Sittwe and Pauktaw townships for 2024 and 2025.

Result 1: The reconstruction needs to temporary shelters in Sittwe and Pauktaw townships as of May 2024 are identified and prioritized.

Objective 2: To verify records of implementation against shelter needs identified in the Joint Shelter Assessment of 2023.

Result 2: Shelter reconstructions conducted by Shelter Cluster partners in period of May 2024 to June 2024 are verified and documented in master database.

4. Methodology and technical criteria

a) Methodology

The assessment is conducted as a census of all longhouses in targeted camps by in-person inspection by assessment teams. Camp-based staff from Shelter Cluster partners used a standard assessment form developed by the Cluster. The camp-based staff were trained to be able to use the developed assessment form and Cluster Engineers joined them in the field to verify whether the assessment had been done per the form and aligned with the scope of the exercise. The assessment form was designed to identify whether shelter responses correspond to the actual needs. As the last assessment was completed in 2023, there is a need to verify and update gaps in shelter responses, provide updates on the current condition of all temporary shelters, and also to provide recommendations to shelter programs for 2024-2025.

Details from the Joint Shelter Assessment from 2023 and activities between 2021 to April 2024 were pre-filled into the assessment form. Surveyors inspected each temporary shelter and discussed with IDPs and Camp Committees. The assessment teams did not check the quality of the ongoing construction as it was outside of the scope of the exercise. However, the teams indicated status of works for Completed (C)/On-going (O) or Unaddressed (U) interventions (shelters with planned interventions were marked with “P” letter).

This assessment also built on the work of the last Joint Shelter/NFI Assessment to continue tracking all shelter/NFI activities in the camps; determining whether each temporary shelter was reconstructed or whether repairs were completed.

The assessment further determined the level of damage of each temporary shelter providing recommendations to address them.

b) Technical criteria

Priority	Damage	Description	Action Required
Priority 1	Destroyed, missing parts.	Building is missing on ground. Structural integrity affected putting life at risk. This includes shelters that have collapsed, or frame structure is partially missing, unstable, rotten, or weak. Structurally unsound and unstable. Existing in condition of falling at any heavy rain and strong wind. Repairs for such shelters are impossible.	Reconstruction - URGENT
Priority 2	Damage to roof sheets, walls	The structural frame remains sound. However, the shelter is significantly damaged and requires the replacement of roofing or walling or flooring materials. Life-span estimate= >12 to 24 months	Weatherproofing, minor support

No priority	Undamaged, functioning	The shelter is in good condition as newly reconstructed in 2023 and 2024.	Requires action.	no
-------------	------------------------	---	------------------	----

5. Examples of damages and status of RSNA 2024

Priority 1



Priority 2



No priority/Functioning and good condition



Under construction



Reconstructed with 2022 design



6. Data Collection Team

Assessment Focal Point: Shelter Unit, UNHCR Sittwe
 Technical Lead: Shelter/CCCM Cluster, UNHCR Sittwe
 Field Lead: Shelter Unit, UNHCR Sittwe and INGO staff
 Surveyors: The data collection teams consisted of camp-based staff and office staff from all Camp Management Agencies.

Organization	Engineer + CCCM	Incentive workers and Camp-based staff	Total
UNHCR	6	0	6
DRC	5	42	47
LWF	3	19	22
NRC	5	6	11
Total	19	67	86

a) Assessment Form _English Version & Myanmar Version

Rapid shelter assessment for IDP camps.

Date: _____ Assessed by: _____

Glossary: R: Reconstruction, M: Maintenance-repair, C: complete, D: ongoing, P: Planned, V: Vacant; M - Megarap; MS - makeshift shelter, CGI - provision of CGI

Name of camp: _____

Prefilled information part							Information to be collected				NFI Information to be collected								
Camp & Shelter serial #	Units per Shelter	Age	Agency	Most recent year of reconstruction maintenance	Identification of 2023 Assessment <i>Reconstruction: priority 1/2/priority 2/functioning</i>	Current Status Planned-ongoing-completed-vacant/gap	Assessed Note of 2023	Identification of 2024 Assessment Functioning or no action required	Reconstruction: priority 1	Reconstruction: priority 2	Appropriate action of ad hoc emergency shelter assistance (specify)	Assessment Note of 2024		Top 3 NFI Needs	Last period of NFI receipt, enough or not	Are NFI items useful or any changes or suggestions	Negative impacts due to late response of NFI assistance	Assistance modality cash or in kind (any request for cash)	Needed to sell some items in exchange of wholesale buying
												Details (Describe damages / Justify recommendation) & Activities							
ABC-1-LH-001																			
ABC-1-LH-002																			
ABC-1-LH-003																			
ABC-1-LH-004																			
ABC-1-LH-005																			
ABC-1-LH-006																			
ABC-1-LH-007																			
ABC-1-LH-008																			
ABC-1-LH-009																			
ABC-1-LH-010																			

IDP စခန်းများအတွက် အဆောင်တန်းလျှော့ချမှုများကို လျင်မြန်စွာ ကွင်းဆင်းစိစစ်အကဲဖြတ်ခြင်းများ

ခေ့ဒ်အမည်

ကြိုတင်ဖြည့်ထားသော အချက်အလက် အပိုင်း					
စခန်းနှင့် အဆောင် နံပါတ်များ	Shelter အလိုက် မျက်နှာများ	ရိုက်ကတ် အဖွဲ့	လုပ်ဆောင်ချက်	2023 ခု၊ Mega tarp စတင်ပေးခြင်း	2023 ခုနှစ်၏ ကွင်းဆင်းလေ့လာ အထောက်အထား
ABC-1-LH-001					
ABC-1-LH-002					
ABC-1-LH-003					
ABC-1-LH-004					
ABC-1-LH-005					
ABC-1-LH-006					
ABC-1-LH-007					
ABC-1-LH-008					

ရက်စွဲ: အကဲဖြတ်စေခံရသည့်: စင်ကာပူ: R- ပြန်လည်တည်ဆောက်ရေး၊ M- ပြုပြင်ထိန်းသိမ်းမှု၊ C- ဖြိုဖျက်ခြင်း၊ O- လုပ်ဆောင်မှု၊ P- စီမံကိန်း၊ U- လေ့လာမှု၊ M- Megatarp၊ MS- ယာယီအိမ်အကာ၊ CGI - CGI အခန်းများ ပံ့ပိုးရေး၊ Tarp - တားပိတ်ရေး

စုဆောင်းရမည့်အချက်အလက်များ			
စခန်းနှင့် အဆောင် နံပါတ်များ	အဆောက်အအုံ အခြေအနေအထား	အဆောက်အအုံ အခြေအနေအထား	အဆောက်အအုံ အခြေအနေအထား

NFI စုဆောင်းရမည့်အချက်အလက်များ			
စခန်းနှင့် အဆောင် နံပါတ်များ	အဆောက်အအုံ အခြေအနေအထား	အဆောက်အအုံ အခြေအနေအထား	အဆောက်အအုံ အခြေအနေအထား

7. Review of response from 2022 to 2024

The table shows the progress of shelter interventions over the last three years until April 2024. In June 2019, the Shelter Cluster agreed to stop the implementation of minor repairs and rehabilitation to focus solely on the full reconstruction of shelters. This strategic decision was taken to achieve the maximum cost-effective result considering limited budget availability and forecasts and following an impact review. However, there is a need to revise the decision as most newly reconstructed longhouses were also affected by Cyclone Mocha in 2023 and in need of rehabilitation/repair. The Cluster allows implementing agencies to apply for funds to implement the renovation and rehabilitation of longhouses.

The strategy aimed at bridging the gap by 2023, however COVID-19 restrictions, the Mocha cyclone, and ongoing armed clashes imposed in 2020, 2023, and 2024 severely impacted implementation, halving the average capacity of reconstruction by partners.

Shelter Reconstruction Need and Gap Table, 2024

Date 19.9.2024

Sr No.	Camp_Name	Status	Total # of shelters	# of completed reconstruction and rehabilitation longhouses				# of shelters planned for reconstruction	# of remaining reconstruction gap from Need Priority-1 [Total need (586) – Commitments plan (191) = 395].	# of remaining reconstruction gap from Need Priority-2 [Total need (1315) – Commitments plan (146) -47 (completed) = 1122]	Remarks
				2021	2022	2023	Until 2024 Aug	2024			
A. Sittwe Township - Short leg											
1	Say Tha Mar Gyi(STMG)	Open	300	40	146	0	0	51	97	138	Kyauk Ta Lone camp was closed in 2023 by building individual houses on the new place that locates nearby. There are no longhouses left there.
2	Dar Paing (DP)	Open	181	0	15	50	10	112	0	8	
3	Ba Sa Ra(BSR)	Open	52	37	0	3	5	0	4	40	
4	Baw Du Pha-1(BDP-1)	Open	127	5	45	20	30	38	21	18	
5	Baw Du Pha-2(BDP-2)	Open	164	53	42	24	19	20	18	83	
6	Kaung Dha Khar-1(KDK-1)	Open	50	10	22	5	12	0	2	31	
7	Kaung Dha Khar-2(KDK-2)	Open	50	15	9	0	0	6	21	23	
8	Maw Thae Ngar (MTN)	Open	82	11	10	28	0	27	6	21	
9	Thet Kae Pyin(TKP)	Open	125	105	0	15	0	0	11	99	
10	Ohn Taw Chay(OTC)	Open	83	13	26	0	11	24	13	35	
11	Ohn Taw Gyi-North(OTG-N)	Open	341	63	180	0	0	35	59	247	
12	Ohn Taw Gyi-South(OTG-S)	Open	285	99	129	0	57	24	25	178	
Total in Sittwe Township			1840	451	624	145	144	337	277	921	
B. Pauk Taw Township - Long and Short leg											
1	Anauk Yei(ANY)	Open	97	10	10	16	0	0	26	52	
2	Kyein Ne Pyin(KNP)-Short leg	Open	82	82	0	0	0	0	47	35	
3	Sin Tet Maw(STM)-Long leg	Open	100	64	0	0	0	6	18	76	
4	Nget Chaung-2(NC-2)-Long leg	Open	87	25	0	19	0	0	27	38	
Total in Pauk Taw Township			366	181	10	35	0	6	118	201	
C. Kyauk Phyu Township - Long leg											
1	Kyauk Ta Lone IDP Camp	Closed	50	19	5	0	0	0	0	0	
Total in Kyauk Phyu Township			50	19	5	0	0	0	0	0	
Grand Total in Three Townships			2256	651	639	180	144	343	395	1122	

Not all shelters identified require reconstruction in 2023 have been fully reconstructed and rehabilitated. The table above shows that 395 shelters in “priority 1” and 1,122 “priority 2” shelters remained unaddressed as of April 2024. The main reasons for the inability to fully cover the needs are the reduction of funding, ongoing armed clashes, depletion of materials in markets, and TA restrictions on access imposed by the Defacto authorities.

8. Shelter Needs Assessment results - 2024

Assessment teams visited 2,206 targeted longhouses in total, of which 1,840 shelters in 12 camps in Sittwe township and 366 shelters in 4 camps in Pauktaw township.

The following camps have not been assessed:

- Thae Chaung (TC) in Sittwe township because all shelters are makeshift shelters and the cluster partners will try to assess separately in the future for shelter kit support. Thae Chaung has no shelter longhouses because the Rakhine State Government (RSG) didn't allow to register as a camp legally.
- Nget Chaung 1 (NG-1) in Pauktaw township because all shelters are individual houses built by the Rakhine State Government (RSG). There are no longhouses left there.

- Taung Paw in Myebon township, because the camp has been declared closed in 2015 by the Myanmar Government following construction of individual houses. The remaining families living in makeshift shelters were supported with shelter kits.
- Kyauk Ta Lone in Kyaukphyu township: All IDPs have been forcibly moved to the relocation site. The defacto authorities declared the camp closure in 2023 and now it is named “Aye Tha Yar” village. Although UNHCR has been granted approval for travel authorization by the de-facto authorities, the Cluster could not visit the camp due to the security concerns regarding the potential armed fights in Kyauk Phyu and ongoing armed fights in surrounding areas.
- The Nidin camp in Kyauktaw: the camp hosted 91 displaced families from the 2012 conflict. It was declared as a “closed” by the Government on 21 August 2018 by building individual houses. IDPs were relocated to new individual houses that were close to the Nidin camp right thereafter. The current resettlement camp is situated on the outskirts of Kyauktaw town in Nay Pu Khan, on the low-lying land previously used as farmland by the Rohingya host communities. As the camp is now under AA controlled area, it is difficult to access it.

9. Key findings

- **586** longhouses were identified as such that require reconstruction (priority 1). Cluster partners committed to reconstructing 137 longhouses with secured funds. Thus, the **395** longhouses from the identified reconstruction priority level 1 remain in need of urgent shelter interventions. Generally, most of them have been reconstructed before 2021. The conditions of these shelters are precarious, presenting structural failures mostly due to decaying frames and roofing materials that put the lives of inhabitants at imminent risk.
- **1378** longhouses present partial damage (roof or walls) not immediately putting life of inhabitants at risk.
- **343** longhouses are currently under construction or with firm projections of reconstruction/planned before December 2024.
- **424** longhouses are structurally sound, and they do not need any interventions. Most of these shelters have been reconstructed in 2022, and they have an expected lifespan of 3 to 5 years.

Shelter Reconstruction Need and Gap Table, 2024

Date 19.9.2024

Sr No.	Camp_Name	Status	Total # of shelters	# completed reconstruction and rehabilitation longhouses-2024	# of shelters planned for	# of identified good conditioned shelters	# of remaining reconstruction gap from Need Priority-1 [Total need (586) – Commitments plan (191) = 395].	# of remaining reconstruction gap from Need Priority-2 [Total need (1315) – Commitments plan (146) – 47 (completed) = 1122]	Remarks
					2024				
A. Sittwe Township - Short leg									
1	Say Tha Mar Gyi(STMG)	Open	300	0	51	11	97	138	Kyauk Ta Lone camp was closed in 2023 by building individual houses on the new place that locates nearby. There are no longhouses left there.
2	Dar Paing (DP)	Open	181	10	112	60	0	8	
3	Ba Sa Ra(BSR)	Open	52	5	0	8	4	40	
4	Baw Du Pha-1(BDP-1)	Open	127	30	38	20	21	18	
5	Baw Du Pha-2(BDP-2)	Open	164	19	20	28	18	83	
6	Kaung Dha Khar-1(KDK-1)	Open	50	12	0	17	2	31	
7	Kaung Dha Khar-2(KDK-2)	Open	50	0	6	6	21	23	
8	Maw Thae Ngar (MTN)	Open	82	0	27	28	6	21	
9	Thet Kae Pyin(TKP)	Open	125	0	0	15	11	99	
10	Ohn Taw Chay(OTC)	Open	83	11	24	11	13	35	
11	Ohn Taw Gyi-North(OTG-N)	Open	341	0	35	0	59	247	
12	Ohn Taw Gyi-South(OTG-S)	Open	285	57	24	55	25	178	
Total in Sittwe Township			1840	144	337	259	277	921	
B. Pauk Taw Township - Long and Short leg									
1	Anauk Yei(ANY)	Open	97	0	0	19	26	52	
2	Kyein Ne Pyin(KNP)-Short leg	Open	82	0	0	37	47	35	
3	Sin Tet Maw(STM)-Long leg	Open	100	0	6	87	18	76	
4	Nget Chaung-2(NC-2)-Long leg	Open	87	0	0	22	27	38	
Total in Pauk Taw Township			366	0	6	165	118	201	
C. Kyauk Phyu Township - Long leg									
1	Kyauk Ta Lone IDP Camp	Closed	50	0	0	0	0	0	
Total in Kyauk Phyu Township			50	0	0	0	0	0	
Grand Total in Three Townships			2256	144	343	424	395	1122	

10. Financial Gaps

In 2022, the Cluster updated designs, bill of quantities and cost estimates for short-legged longhouses used in all camps in Sittwe Township [8,000 USD estimated per shelter] and long-legged longhouses used in some flood prone camps in Pauktaw and Kyaukphyu townships [8,743 USD estimated]. These designs replace the use of jungle wood with timber for pillars, increase the use of bolt-nuts instead of nails, modified windows style, ceiling and walls for improved air circulation and privacy. Cluster engineers estimate that the lifespan of shelters reconstructed with 2022 designs increases from 2-3 years to 4-5 years compared to previous designs. In this year 2024, the ongoing armed clashes and transportation blockages in Central Rakhine rapidly increased the material prices and Cluster reviewed the BoQ and updated the bill of quantities. Adding the inflation of the national currency to this constraints, the revised BoQ increased costing for the reconstruction of a short-legged 8 Units longhouse in all Sittwe Camps { 9797 USD estimated per longhouse }, short-legged 10 Units longhouse in some Sittwe Camps { 10927 USD estimated per longhouse} and longhouses 8 Units long-legged from Pauktaw camps { 10521 USD estimated per longhouse}. See as follows:

Prize Comparison -Temporary Shelter Reconstruction Bill of Quantities in IDP camps, Rakhine State

Date: 24.07.2024

Sr No	Type of Designs	Total Cost/Shelter (2022)		Total Cost/Shelter (After Mocha Cyclone October,2023)		Total Cost/Shelter (March 2024)		Remark
		MMK	USD	MMK	USD	MMK	USD	
1	Short Leg 8 Units 2022 design (with CGI)	14,000,000.00	8,000.00	19,600,000.00	9,333.00	33,800,000.00	9,797.00	
2	Short Leg 10 Units 2022 design (with CGI)	15,700,000.00	8,971.00	22,080,000.00	10,514.00	37,700,000.00	10,927.00	
3	Long Leg 8 Units 2022 design (with CGI)	15,300,000.00	8,743.00	21,450,000.00	10,214.00	36,300,000.00	10,521.00	

Official UN Exchange Rate:
 In 2022: 1 USD = 1750 Kyats
 in 2023: 1 USD = 2100 Kyats
 In 2024: 1 USD = 3450 Kyats

*Though the cost for reconstruction longhouse gets raised up radily in Myanmar Kyat due to the transpotation blockages and ongoing conflicts, the cost coversion into USD increased slightly with Myanmar Kyat inflation.

Addressing the remaining gap 395 reconstruction priority 1 identified in the assessment will cost approximately \$ 3.9 million. In addition to these need gap, should funding be available for partners should also considering rehabilitation/reconstruction to the 1122 identified gap reconstruction priority 2. This will also cost additional \$ 11.2 million bringing the total budget requirement for Shelter Cluster Partners for 2025 to \$ 15.1 million.

- **USD 3.9 million** is urgently needed to bridge the remaining gap from 395 identified longhouses of reconstruction priority 1. {9797 USD estimated per short leg 8 units longhouse reconstruction and 10927 USD estimated per short leg 10 units longhouse reconstruction}
- An additional **USD 11.2 million** is necessary to cover for rehabilitation and reconstruction to all 1122 shelters as a priority #2. {9797 USD estimated per short leg and long leg longhouse rehabilitation of any types/ 10521 USD estimated per long leg 8 units longhouse reconstruction of any types}

It is relevant to note that the fluctuation of the exchange rate between the Myanmar Kyat and the US Dollar also affects the estimated budget. Additionally, ongoing armed conflicts in Rakhine State and restriction of all waterways, and transportation blockages tremendously increase the price of construction materials (cement, bamboo, timber, CGI, and other hardware in local markets), and imposing more challenges to finding local raw materials in markets may affect the total budget.

a) Breakdown figures by Priorities

Priority Type	Shelter Qty	Estimated price: USD per longhouse	Estimated cost: USD total need per area
Sittwe-Need Priority1/8 Units short leg	275	\$ 9,800	\$ 2,695,000
Sittwe-Need Priority1/10Units short leg	2	\$ 10,930	\$ 21,860
Pauktaw-Need Priority1/ 8 Unit Long leg	71	\$ 10,530	\$ 747,630
Pauktaw-Need Priority1/ 8 Unit short leg	47	\$ 9,800	\$ 460,600
Sittwe + Pauktaw total priority 1	395	\$ -	\$ 3,925,090
Sittwe-Need Priority2/8 Units short leg	803	\$ 9,800	\$ 7,869,400
Sittwe-Need Priority2/10 Units short leg	118	\$ 10,930	\$ 1,289,740
Pauktaw-Need Priority2/8 units short leg	35	\$ 9,800	\$ 343,000
Pauktaw-Need Priority2/ 8 units long leg	166	\$ 10,530	\$ 1,747,980
Sittwe + Pauktaw total priority 2	1122	\$ -	\$11,250,120
Sittwe + Pauktaw total priority 1+2	1517	\$ -	\$15,175,210

b) Figures by shelter designs and townships

Shelter type-SL/LL	Qty	Camp qty-Sittwe	Reconstruction Priority	Estimated cost: USD (for 2021 design)	Total
Short leg / 8 Units	275	12	Priority-1	\$ 9,800	\$ 2,695,000
Short leg / 10 Units	2		Priority-1	\$ 10,930	\$ 21,860
Short leg / 8 Units	803	12	Priority-2	\$ 9,800	\$ 7,869,400
Short leg / 10 Units	118		Priority-2	\$ 10,930	\$ 1,289,740
Total of SL				\$ -	\$ 11,876,000
Shelter design type-SL/LL	Qty	Camp qty-Pauktaw	Reconstruction Priority	Estimated cost: USD (for 2021 design)	Total
Long leg/ 8 units	71	4	Priority-1	\$ 10,530	\$ 747,630
Short leg/ 8 units	47		Priority-1	\$ 9,800	\$ 460,600
Long leg/ 8 units	166	4	Priority-2	\$ 10,530	\$ 1,747,980
Short leg/ 8 units	35		Priority-2	\$ 9,800	\$ 343,000
Total of SL/LL					\$ 3,299,210
All total of SL/LL	1517				\$15,175,210

c) Breakdown table of estimated costs per camp

Sr No.	Camp_Name	Status	Total # of shelters	# of remaining reconstruction gap from Need Priority-1	Shelter type	Estimated USD for a short leg longhouse shelter reconstruction P1 (395)	# of remaining reconstruction gap from Need Priority-2	Shelter type	Estimated USD for a short leg longhouse shelter reconstruction P2 (1122)	Remarks
A. Sittwe Township - Short leg										
1	Say Tha Mar Gyi(STMG)	Open	300	95	8 units	931000 USD	20	8 units	196000 USD	
				2	10 units	21860 USD	118	10 units	1289740 USD	
2	Dar Paing (DP)	Open	181	0	8 units	0 USD	8	8 units	78400 USD	
3	Ba Sa Ra(BSR)	Open	52	4	8 units	39200 USD	40	8 units	392000 USD	
4	Baw Du Pha-1(BDP-1)	Open	127	21	8 units	205800 USD	18	8 units	176400 USD	
5	Baw Du Pha-2(BDP-2)	Open	164	18	8 units	176400 USD	83	8 units	813400 USD	
6	Kaung Dha Khar-1(KDK-1)	Open	50	2	8 units	19600 USD	31	8 units	303800 USD	
7	Kaung Dha Khar-2(KDK-2)	Open	50	21	8 units	205800 USD	23	8 units	225400 USD	
8	Maw Thae Ngar (MTN)	Open	82	6	8 units	58800 USD	21	8 units	205800 USD	
9	Thet Kae Pyin(TKP)	Open	125	11	8 units	107800 USD	99	8 units	970200 USD	
10	Ohn Taw Chay(OTC)	Open	83	13	8 units	127400 USD	35	8 units	343000 USD	
11	Ohn Taw Gyi-North(OTG-N)	Open	341	59	8 units	578200 USD	247	8 units	2420600 USD	
12	Ohn Taw Gyi-South(OTG-S)	Open	285	25	8 units	245000 USD	178	8 units	1744400 USD	
Total in Sittwe Township			1840	277		2716860 USD	921		9159140 USD	
B. Pauktaw Township - Long and Short leg										
1	Anauk Yei(ANY)	Open	97	26	8 units	273780 USD	52	8 units	547560 USD	
2	Kyein Ne Pyin(KNP)-Short leg	Open	82	47	8 units	460600 USD	35	8 units	343000 USD	
3	Sin Tet Maw(STM)-Long leg	Open	100	18	8 units	189540 USD	76	8 units	800280 USD	
4	Nget Chaung-2(NC-2)-Long leg	Open	87	27	8 units	284310 USD	38	8 units	400140 USD	
Total in Pauk Taw Township			366	118	8 units	1208230 USD	201	8 units	2090980 USD	
Grand Total in Two Townships			2206	395	8 units	3925090 USD	1122	8 units	11250120 USD	

11 Important shelter considerations

a) The necessity of shelter support

While the search for durable solutions continues, in the interim, adequate investments toward shelter interventions remain imperative to ensure at least a minimum standard of dignity for displaced stateless populations. Until relevant authorities and the international community identify real, sustainable, and dignified solutions to the Rohingya displacement, shelter needs in these camps will continue to grow and will require necessary funding for the provision of immediate lifesaving assistance.

b) The urgent call for additional land

Over the last years, (as normal for any population) also the Rohingya and Kaman displaced population expanded in number from an estimated 120,000 people in 2012 to 150,129 in 2024, representing an annual average growth rate of 2%. However, there has been no additional land allocation to accommodate the population growth. This resulted in overcrowded camps, overcrowded shelters, an increase of makeshift shelters in camps. The Shelter Cluster urgently requires allocation of additional land to construct temporary shelters in line with Recommendation 26 of the Rakhine Commission's Report (24 August 2017), which states that "*the government should ensure dignified living conditions in camps including improved shelter, addressing the current overcrowding by building additional or larger longhouses or individual houses in line with international humanitarian standards.*" The recommendation continues by insisting that "*when additional land is needed, host communities should be adequately compensated for the use of their land.*"

Covering the needs identified in this report will still leave the problem of overcrowded shelters and camps unresolved. *Temporary solutions for the families who are forced to live in makeshift shelters and individual houses will still not be addressed, nor will the lack of floor space per shelter unit increase.* Therefore, despite this report covers certain needs, many other issues remain in need of immediate attention.

In 2012 and 2013, site planning was conducted in accordance with technical guidelines approved by the Rakhine State Government (RSG). Temporary shelters of 45 feet by 30 feet were constructed in C-shaped clusters of 5 shelters with a fire break of 15 feet between shelters and 25 feet between clusters. Should a fire break out, it was assumed that a maximum of 5 temporary shelters would burn.

The approved design for temporary shelters provides 15.7m² per shelter unit; the floor space recommended for a family of 4.5 people¹. With an average household size of 5.5 people per shelter unit and with 68% of IDPs living with less than 3.5m² of floor space, the majority of IDPs have constructed extensions to the front and side of their shelters encroaching dangerously into the fire break area, increasing the risk of major fires and creating a highly congested environment in IDP camps.

¹ SPHERE guideline indicator recommends that each family member should have a floor space of at least 3.5m²

Relieving this congestion and overcrowding requires the allocation of additional land. Without additional land, it will not be possible to improve the living conditions of IDP camps in line with international humanitarian standards.

NFI Assessment

1. Background of the NFI assessment

The Cluster conducted the NFI assessment for IDP camps for the first time since May 2023 when the cyclone Mocha hit the region. There is a need in a comprehensive assessment of the NFI assistance and needs across all IDP – the cluster aimed to fill the gap by conducting such a survey in all camps in Rakhine to feed the programming decisions of partners on the ground and to give them solid evidence on the existing needs. While the common understanding and expert knowledge of key partners is that almost all people need core relief items in IDP camps, the cluster did not have a methodological approach to proving or denying the suggestion and extrapolating and harmonizing it. Apart from this, the rapidly changing local context in Rakhine shifted dynamics in terms of population movement, needs, access to basic items, and humanitarian access, and it also revealed new negative coping mechanisms adopted by people in need in 2024.

Starting from November 2023 existing supply chains have been cut and local markets depleted of existing stock of basic items. Blankets, mosquito nets, basic kitchen equipment, jerry cans, clothing, and other essential items were hard to find on local markets in Rakhine. The resumption of armed conflict forced people to flee their homes and self-settle in informal sites across the state. As for the date, the Cluster estimates that there are more than 400,000 people in IDP sites in Rakhine. Almost 67% of them temporarily relocated to sites in the central part of Rakhine and 33% of them remain displaced within townships in the northern part. The sudden influx of forcefully displaced people increased in the second quarter of the year – it doubled according to the cluster’s estimation and led to an increased demand for basic items in the State.

While the displacement in Rakhine continues, people in camps continue to suffer from the resumption of military clashes, isolation, a lack of access to basic services, military conscription processes, and an inability to generate income. The total number of people in IDP camps stands at 150,129 ind. and cluster partners were trying to bridge the gap in the provision of essential items to them at the beginning of the year. The displacement of 400,000 ind. to IDP sites with their associated needs put an additional caseload for cluster partners and stretched available resources even more.

The assessment was exercised for the NFI component in 13 IDP camps located in Sittwe town. See the detailed list below:

Serial no.	Camp name	Camp name acronym	Total number of families in a camp	Total number of individuals in a camp	The organization that conducted the assessment
1.	Basara	Basara	402	2,556	LWF
2.	Baw Du Pha 1	BDP1	514	2,570	DRC
3.	Baw Du Pha 2	BDP2	1,420	9,415	DRC
4.	Dar Paing	DP	1,955	12,461	DRC
5.	Kaung Doke Khar 1	KDK1	399	2,254	LWF
6.	Kaung Doke Khar 2	KDK2	399	2,297	LWF
7.	Mow Thi Nyar	MTN	660	3,880	NRC

8.	Ohn Taw Chay	OTC	809	5,363	DRC
9.	Ohn Taw Gyi North	OTG-N	2,763	16,951	DRC
10.	Ohn Taw Gyi South	OTG-S	2,248	12,194	LWF
11.	Say Tha Mar Gyi	STMG	2,698	17,242	DRC
12.	Thea Chaung	TC	2,042	13,150	LWF
13.	That Kya Pyin	TKP	1,025	7,113	NRC
Total:			17,334 HHs	107,446 ind.	

The cluster continues attempts to reach out to IDP camps in Pauktaw and collect data from enumerators there. The process is challenging due to the inability of camp-based staff to travel outside (Pauktaw is located in the AA-controlled area as of the date of the report) and reach areas with better mobile connections. Once obtained, the cluster will issue an add-on paper as an annex to the report.

The NFI part of the questionnaire has been included in the shelter assessment form and the actual data collection was done simultaneously. Camp Management Agencies (CMAs) conducted the NFI assessment in June 2024 to better understand the current needs of people who live in protracted IDP camps.

2. Methodology

The cluster partners conducted the assessment survey across all 13 IDP camps in Sittwe in the form of house-by-house visits. The random sampling was used to select the families for the interviewing process, with a prevalence rate of 10%, confidence level of 95%, and 5% margin error. A total of 267 participants were selected from 267 households as representatives of 13 IDP camps. The details of the sampling size and the total number of families per camp can be found below.

a) The sampling size

Township	Camp	# of Households	Sample Size (n)
Sittwe	Kaung Doke Khar-1	392	10
	Kaung Doke-2	399	10
	Basara	403	10
	Ohm Taw Gyi- S	2,248	32
	Thae Chaung	2,042	29
	Dar Paing	2,025	29
	Baw Du Pha-1	1,013	14
	Baw Du Pha-2	1,379	20
	Ohm Taw Chay	809	11
	Ohm Taw Gyi- N	2,763	39
	Say Tha Mar Gyi	2,698	38
	Maw Thi Nyar	660	10
	Thet Keay Pyin	1,024	15
Total		17,855 families	267 families

The questionnaire template is indicated below and also it can be found in the annex to this document.

b) The questionnaire template

Rapid shelter assessment for IDP camps.

Date: _____ Assessed by: _____
Glossary: R- Reconstruction, M- Maintenance-repair, C-Complete, O- ongoing, P- Planned, V- Vacant, M- Missing, NS- not suitable for use, CGI - provision of CGI

Name of camp: _____

Prefilled information part						Information to be collected				NFI Information to be collected							
Camp & Shelter serial #	Village post/Village	Age group	Activity	Main reason for reconstruction assistance	Shelter type covered in 2023	Identification of 2023 Assessment	Assessed date of 2023	Current Status	Identification of 2024 Assessment	Appropriate action of relief and emergency shelter assistance (Specify)	Assessment date of 2024	Type 3 NFI Needs	Last period of NFI receipt, enough or not	Are NFI items useful or any changes or suggestions	Damage requests due to late response of NFI assistance	Aid/other monetary cash or in kind (any mention for cash)	Method to suit better items in exchange of whatever having
ABC-1-LH-001																	
ABC-1-LH-002																	
ABC-1-LH-003																	
ABC-1-LH-004																	
ABC-1-LH-005																	
ABC-1-LH-006																	
ABC-1-LH-007																	
ABC-1-LH-008																	
ABC-1-LH-009																	
ABC-1-LH-010																	

IDP စခန်းများအတွက် အဆောက်အအုံများနှင့်အညီ လျင်မြန်စွာ ကွင်းဆင်းစီစစ်အကူပြုခြင်းများ

ခရီးစဉ်: _____

ပြုစုထားသော အချက်အလက် အစဉ်

Camp & Shelter serial #	Village post/Village	Age group	Activity	Main reason for reconstruction assistance	Shelter type covered in 2023	Identification of 2023 Assessment	Assessed date of 2023	Current Status	Identification of 2024 Assessment	Appropriate action of relief and emergency shelter assistance (Specify)	Assessment date of 2024	Type 3 NFI Needs	Last period of NFI receipt, enough or not	Are NFI items useful or any changes or suggestions	Damage requests due to late response of NFI assistance	Aid/other monetary cash or in kind (any mention for cash)	Method to suit better items in exchange of whatever having
ABC-1-LH-001																	
ABC-1-LH-002																	
ABC-1-LH-003																	
ABC-1-LH-004																	
ABC-1-LH-005																	
ABC-1-LH-006																	
ABC-1-LH-007																	
ABC-1-LH-008																	

The cluster partners agreed on its content and design before the data collection period and used it during the camps' visits from 3 June to 12 June. The Cluster recommended to provide core relief items to people in need with a consideration that the estimated lifespan of a kit is 2 years. Hence, the replenishment is envisaged every two years to people in camps.

Partners agreed on the design of a kit² and revised it in 2023. One of the goals of the exercise is to get data and compare results towards one of the kits' content -- "Full core-relief NFI kit (Permanent)".

Being the main tool to address the needs, the mentioned kit type is widely used in Rakhine as a part of emergency responses to people in camps, sites, and conflict-affected areas. The context of the kit is indicated below.

² The Myanmar Basic Shelter-NFI kit Guidance, [link](#)

c) Full core-relief NFI kit (Permanent)

#	Item name	Reference image	Technical specification	Quantity per 1 kit
1.	Blanket		Synthetic (fleece) medium thermal 1,5x2,0m/3mm or high thermal 1,5x2,0m/5mm	1 pcs/person
2.	Sleeping mat		Waterproof, Synthetic yarns 180x90cm	1 pcs/person
3.	Mattress		Foam mattress, 6'-6" – 5'6" 2-4inch	1 pcs/person
4.	Mosquito net		Long lasting insecticidal net. Polyester or Polyethylene 180x160x150 cm	1 pcs/person
5.	Solar lamp/flashlight		Hand-held + solar powered	2 pcs/person
6.	Bucket		High density polyethylene, UV resistant and safe for food and water storage. Tight fitting lid. 20l	1 pcs/person
7.	Jerry can		PVC coated polyester fabric, polyethylene, or equivalent material. 20l	1 pcs/person
8.	Kitchen set		Refer to the annex in the guiding document ²	1 set
9.	Clothes set		Refer to the annex in the guiding document ²	1 set

The guiding document aims to improve the consistency and effectiveness of the SNFI responses with minimum standards in Myanmar. However, it also leaves space to adapt the kits' content and design according to the local context³. Thus, partners prefer to distribute NFI kits in a quantity that differs from the recommended one. The change is driven by the availability of items, challenges associated with their replenishment, and a significantly increased number of forcefully displaced people who urgently need such assistance.

Main findings

According to the assessment form, there were 6 questions that enumerators asked during the house-by-house visits to IDP camps in Sittwe. Detailed information on corresponding findings can be found below for each of the assessment questions separately.

1. Top 3 prioritized non-food items that families need the most.

Item name	priority 1	priority 2	priority 3
battery	0%	0%	8%
blanket	0%	46%	15%
fan	0%	0%	8%
fuel	8%	0%	0%
kitchen set	23%	23%	8%
mosquito net	23%	0%	15%
sleeping mat	0%	0%	15%
solar lamp	8%	23%	8%
solar panel	8%	0%	0%
tarpaulin	31%	8%	23%

Every third family indicates that the first priority item is tarpaulin across all IDP camps in Sittwe. The data collection period was done during the rainy season when people in camps experienced heavy rain, and storms that lasted for a few months in the region. As the first chapter of this assessment revealed, there are at least 1,166 “long houses” that require emergency shelter assistance in IDP camps in the form of “Megatarp” distributions. It stands for more than 9,328 families in need of this type of intervention, excluding those houses that are identified as a critical need of reconstruction.

The second and third items in this category group are mosquito nets and kitchen sets (23% share each from priority #1) – items, hardly to be found on the local markets, and expensive. They also appear in the other two priority groups.

Almost every second family indicated a blanket as the item that they need the most following by a kitchen set and solar lamp from the same priority group. As the number of families in IDP camps increases from year to year starting from 2012 the need for some basic household items grows

³ The content of an NFI kit that partners distribute in Rakhine state differs from the one that is indicated in the national recommendations. Partners adjusted their programming and supply processes after cyclone Mocha in May 2023 to meet the actual needs. The results of the participatory assessment was factored in the process of kits' design in 2023.

too. Also, observations from the field indicate that families are compromising almost all types of items in exchange for cash, food, and medicine.

2. Provided NFI assistance toward needs – gaps and satisfactory levels.

Camp acronym	Received items satisfy the needs	Received items do not satisfy the needs
BDP-1	0%	100%
BDP-2	0%	100%
MTN	50%	50%
OTC	0%	100%
OTG-N	0%	100%
STMG	0%	100%
TKP	100%	0%
KDK1	20%	80%
KDK2	100%	0%
Basara	100%	0%
OTG-S	0%	100%
TC	0%	100%
DP	0%	100%

Almost all families from the survey indicated that the provided items do not meet their needs fully. Exceptions are families in TKP, KDK2, and Basara camps where all respondents indicated that their needs have been met fully with regard to the NFI assistance. The satisfactory level does not correlate with the time since the last distribution took place. People in Basara camp, for example, received CRIs in May 2023 while IDPs in KDK2 were assisted in January 2024, and IDPs in TKP received assistance in 2022.

3. Quality of provided items.

While the provided items are of good quality overall, as indicated by families who received them, there are some suggestions to adapt the content of the provided kits. The report lists them below:

1. The quality of solar lamps should be increased. They do not last long and the capacity of a built-in battery is not sufficient enough.
2. Replace a jerry can in favor of a water container or a drinking water filter.
3. Replace a steel pot in favor of one made out of zinc (kitchen set).
4. Change kitchen set items and jerry cans with other useful items (zinc pot, for example).
5. Change the size of a blanket and a mosquito net (current items are too small).
6. Include one umbrella into the kit' composition while the jerry could be jeopardized.

The common observation concerning the quality is to enhance it for any plastic item in a kit. Jerry cans and buckets are among the plastic items that beneficiaries complain about the most. All 29 interviewed people in the TC camp mentioned they would like to jeopardize the item in favor of other NFIs to be included in the kit composition due to the poor quality of a jerry can. Also, the kitchen set should be adapted – people prefer a zinc cooking pot instead of a steel one. According to them, it is easier to stir water from a zinc pot as it has a rim, while a steel pot has two handles and no rim around the pot – it makes the stirring process difficult. Apart from this, the thickness of a steel pot is higher and it takes more firewood/coal to heat it up compared to a zinc one.

4. Negative impact due to the delay in the provision of NFIs.

As mentioned above, the resumption of the armed conflict, cyclone Mocha, cut supply chains, and new access restrictions imposed by the de-facto government have imposed additional challenges for partners to assist people in IDP camps in Rakhine with core relief items in an established timeframe. The unavailability of income sources and access to basic services created new patterns of negative coping mechanisms that people in camps adopted. They sell personal belongings in favor of food and medicine. Hence, the assessment teams were trying to get more information on the negative impact that was caused by the delay of the NFIs' provision.

The assessment revealed concerns that can be grouped in a following way:

1. Insufficiency of provided items.

Beneficiaries made a common statement across the camps related to the estimated lifespan of items. The cluster partners provide CRIs to the same targeted people bi-annually, considering that provided kits can last for two years. However, the inconsistent quality of items (especially the ones made out of plastic), frequent usage, damages, and loss raise concerns from beneficiaries about the kits' estimated lifespan.

The other observation made is about the number of items in a kit. The number of items in a kitchen set is not enough to cover the needs of a family and the same statement applies to the number of blankets, mosquito nets, and sleeping mats.

2. Health-related issues.

The unavailability of mosquito nets caused many people in camps to get sick due to mosquito bites. Beneficiaries from 7 out of 13 assessed camps raised the issue as the most negative impact that they have been experiencing recently. As people in IDP camps are exposed to mosquito-borne illnesses – malaria, and dengue fever in particular – they lack adequate health-care support and access to it.

3. Security.

Portable solar lights (or solar torches) contribute to the safety of people in camps during the night hours. Public WASH facilities are the ones that are available in camps, people use them during night hours exposing themselves to additional security risks. Safety at home is also one of the key concerns – cases of robberies intensified in camps and people feel insecure and unable to spot and prevent thefts.

5. Preferred type of modality, cash vs. in-kind.

88% of respondents indicated they would like to receive in-kind support and not in favor of cash. The main indicated reason is that it saves their time and allows beneficiaries to receive a whole package of the most needed items at once. Compared to the cash modality, people admit that it will take a while to search for all the items on local markets without a guarantee to find any. However, respondents admit that local markets are available and items could be found there. The only exception to this statement comes from the OTG-N camp where responders mentioned unavailability to access local markets. Also, cases of extortion at checkpoints near the entrance to the camp have been frequently observed by partners.

6. Selling items from provided kits to meet other needs.

According to the assessment, 47% of beneficiaries sold some items from a kit. They used the money to buy food, firewood, and other household items or spent it on medicine. The most frequent item to be bought is solar light/solar torch followed by kitchen equipment and external batteries to charge phones. The summary can be found below:

Camp name acronym	% of beneficiaries who sold some items from an NFI kit	% of beneficiaries who did not sell some items from an NFI kit
Basara	50%	50%
BDP-1	50%	50%
BDP-2	85%	15%
DP	0%	100%
KDK1	0%	100%
KDK2	80%	20%
MTN	40%	60%
OTC	45%	55%
OTG-N	93%	8%
OTG-S	72%	28%
STMG	24%	76%
TC	34%	66%
TKP	40%	60%
Average:	47%	53%

The analysis demonstrates that people sell items regardless of a camp' location and availability of markets nearby. There are only two IDP camps where 100% of interviewed people indicate they did not sell any items from the provided NFI kits – DP and KDK1.

Financial gap and challenges

Partners continuously support displaced people who live in camps with the provision of core relief items as a part of the emergency response. Periodic cyclones, resumption of armed conflict, increased isolation, and unclear power dynamics in camps make families dependent on the provision of CRIs. The summary of the financial part of the assistance is indicated in the table below:

Township	Year of the last NFI assistance	Month of the last assistance	Camp Name	Camp Acronym	# of families in a camp	# of people in a camp	Planned NFI assistance for 2024	Cost of NFI assistance ⁴
Sittwe	2023	May	Basara	Basara	402	2,556		\$ 24,120
Sittwe	2024	March	Baw Du Pha 1	BDP1	514	2,570		\$ 30,840
Sittwe	2023	February	Baw Du Pha 2	BDP2	1,420	9,415	in a workplan for Q4	\$ 85,200
Sittwe	2024	March	Dar Paing	DP	1,955	12,461		\$ 117,300
Sittwe	2024	February	Kaung Doke Khar 1	KDK1	399	2,254		\$ 23,940
Sittwe	2024	January	Kaung Doke Khar 2	KDK2	399	2,297		\$ 23,940
Sittwe	2023	August	Mow Thi Nyar	MTN	660	3,880		\$ 39,600
Sittwe	2022	June	Ohn Taw Chay	OTC	809	5,363		\$ 48,540
Sittwe	2023	November	Ohn Taw Gyi North	OTG-N	2,763	16,951		\$ 165,780
Sittwe	2023	September	Ohn Taw Gyi South	OTG-S	2,248	12,194		\$ 134,880
Sittwe	2022	May	Say Tha Mar Gyi	STMG	2,698	17,242	in a workplan for Q4	\$ 161,880
Sittwe	2023	July	Thea Chaung	TC	2,042	13,150		\$ 122,520
Sittwe	2022	March	That Kyae Pyin	TKP	1,025	7,113	in a workplan for Q4	\$ 61,500
Total:					17,334	107,446		\$ 1,040,040

a) The financial gap in a best-case scenario

Given the adopted approach of the provision of CRI items to displaced people in camps bi-annually, the critical gap remains for people who live in OTC, STMG, and TKP camps (4,532 HHs; 29,718 ind. in total). The financial gap translates to some \$271,920. Partners committed to provide CRIs to STMG and TKP camps by the end of the year. It will shorten the gap to some \$48,540 to be covered as urgent life-saving assistance.

Township	Year of the last NFI assistance	Month of the last assistance	Camp Name	Camp Acronym	# of families in a camp	# of people in a camp	Planned NFI assistance for 2024	Cost of NFI assistance ⁴
Sittwe	2022	June	Ohn Taw Chay	OTC	809	5,363		\$ 48,540
Sittwe	2022	May	Say Tha Mar Gyi	STMG	2,698	17,242	in a workplan for Q4	\$ 161,880
Sittwe	2022	March	That Kyae Pyin	TKP	1,025	7,113	in a workplan for Q4	\$ 61,500
Total:					17,334	107,446		\$ 1,040,040

b) The financial gap in a worst-case scenario

Apart from this, keeping into consideration the worst-case scenario of unavailability of access to IDP camps by the end of 2024, the Cluster estimates that the financial gap will widen to those camps

⁴ The cost of the NFI kit is taken as \$60 – an average between different design, content and quantity.

where people have been assisted in 2023. The critical gap will translate into the following totals in terms of the budgets required:

Township	Year of the last NFI assistance	Month of the last assistance	Camp Name	Camp Acronym	# of families in a camp	# of people in a camp	Planned NFI assistance for 2024	Cost of NFI assistance ⁵
Sittwe	2023	May	Basara	Basara	402	2,556		\$ 24,120
Sittwe	2023	February	Baw Du Pha 2	BDP2	1,420	9,415	in a workplan for Q4	\$ 85,200
Sittwe	2023	August	Mow Thi Nyar	MTN	660	3,880		\$ 39,600
Sittwe	2022	June	Ohn Taw Chay	OTC	809	5,363		\$ 48,540
Sittwe	2023	November	Ohn Taw Gyi North	OTG-N	2,763	16,951		\$ 165,780
Sittwe	2023	September	Ohn Taw Gyi South	OTG-S	2,248	12,194		\$ 134,880
Sittwe	2022	May	Say Tha Mar Gyi	STMG	2,698	17,242	in a workplan for Q4	\$ 161,880
Sittwe	2023	July	Thea Chaung	TC	2,042	13,150		\$ 122,520
Sittwe	2022	March	That Kya Pyin	TKP	1,025	7,113	in a workplan for Q4	\$ 61,500
Total:					14,067	87,864		\$844,020

In this case, the financial gap will widen to some \$844,000 and the number of people in need of CRIs will increase to more than 87,864 ind. (14,067 HHs).

Challenges

The main challenge remains in the replenishment of prepositioned items, and their delivery to Sittwe with further delivery to IDP camps. Imposed restrictions make partners unable to replenish stocks timely and distribute the items. While all camps are located in proximity to the town, there are many newly established checkpoints and military block posts on the way from Sittwe to the camps. Militaries and police demand permission from different commanders in charge, local and State authorities that create additional barriers for partners to reach the camps. In July, Tatmadaw military units started to fortify areas near the coastline southeast of Sittwe. They built trenches and fences along the IDP camps that are located nearby – OTC and OTG-N stretching the fortification towards other camps (OTG-S, BDB2, and BDB1) and testing artillery weapons in the immediate proximity to it.

Additionally, the recently submitted TA applications⁶ for transportation of items from Yangon to Sittwe have been rejected by de-facto authorities citing the inability to guarantee the safety of cargo if it would be transported by waterways.

⁵ The cost of the NFI kit is taken as \$60 – an average between different design, content and quantity.

⁶ The submitted TA applications for distribution of items (covering months of September and October) have been rejected by the de-facto authorities. The TA applications for transportation of items from Yangon to Sittwe have been resubmitted by UN OCHA on 20 September 2024.

Summary of the NFI assessment

Similar to the shelter part of the assessment, there is an urgent need to provide life-saving assistance and solutions to people who reside in IDP camps. Being displaced for more than a decade, displaced people continue to experience isolation from basic services, increased movement restriction, inability to generate income, extortion, and negative coping mechanisms.

The assessment results revealed urgent needs in basic items -- 62% of respondents indicated that tarpaulin is among the prioritized items that they need, 61% indicated a provision of blankets as a pressing need, and 54% of respondents said that kitchen set is an item that they are lacking of.

People who live in camps indicate that the provision of items every two years is not enough since items do not last for long – they could break, get lost, or the provided number is not sufficient to cover the needs of all family members. Some of the plastic items last not as long as the others in a kit and beneficiaries wish to replace them within a kit composition or improve their quality: to include portable drinking water filters or water containers, improve the quality of solar lamps/torches, plastic jerrycans, enlarge mosquito nets, and blankets.

The disruption in NFI assistance to IDP camps was caused by the cyclone Mocha period in 2023, the resumption of military clashes in November 2023, the cut of established supply chains in early 2024, and increased isolation of the region throughout the year. It led to the adoption of negative coping mechanisms (selling basic items to buy food, medicine, or firewood) the higher exposure level to mosquito-borne illnesses (malaria, and dengue fever in particular), and to increased security risks in the camps.



The Cluster estimates that the financial gap to provide NFI assistance to people in camps stands for \$48,540 keeping into considerations their commitments towards distributions by the end of the year.

However, with rapidly changing context, current security situation in the region and access restrictions the Cluster considers a scenario when partners will not be able to reach out IDP camps by the end of 2024. The total number of people in need of CRIs will increase to some 87,800 ind. (14,000 families) and will result in additional \$844,000 to be provided to cover the gap.

Partners are encouraged to scale up the assistance in IDP camps and to bridge the gap by provision of core relief items to people who need them the most. The Cluster continues to advocate for fair access to camps and to obtaining an approval from de-facto authorities to transport CRIs from Yangon to Sittwe.

Annexes

Annex 1 - 2022 Design and Bill of Quantities for Temporary "short leg" shelter

		BILL OF QUANTITIES FOR Short Leg Design 8 Units Shelter Reconstruction (45' x 30' x 7'-6")					
Sr. No.	Particulars	Unit	Quantity	Rate (Ks.) Present	Amount (Ks.)	Purpose	
A. MATERIALS COST							
1	Cement (Rhino/Crown)	Bag.	25.00	16,500	412,500 Ks.	For footing 63 nos.	
2	Sand	Cft.	100.00	750	75,000 Ks.	For footing 63 nos.	
3	Aggregate	Cft.	200.00	7,000	1,400,000 Ks.	For footing 63 nos.	
4	Wire nail	viss	49.26	8,000	394,080 Ks.	For general installation of timber structures	
5	1.5"Dia Bamboo Pool	No	3,040.00	3,000	9,120,000 Ks.	For round exterior wall, front interior wall & ceiling	
6	5 plywood(8'x4')	Sheets	27.16	25,000	679,004 Ks.	For interior partition cover	
7	Hard wood	Cft.	430.00	28,000	12,040,000 Ks.	For building overall structures	
8	1/2"Ø x5" bolt & nut	Set	126.00	900	113,400 Ks.	For connecting MS strap and timber main posts	
9	1/2"Ø x6" bolt & nut	Set	25.00	1,100	27,500 Ks.	For connecting post plate/roof beam to main post	
10	1/2"Ø x7" bolt & nut	Set	36.00	1,300	46,800 Ks.	For connecting main posts and single floor beam	
11	1/2"Ø x9" bolt & nut	Set	9.00	1,600	14,400 Ks.	For connecting main posts and double floor beam	
12	1/2"Ø washers	Pic	392.00	100	39,200 Ks.	For bolt & nut fitting	
13	M.S Post Trap(2"x1/4"x2") (medium quality)	No.	63.00	7,000	441,000 Ks.	For connecting concrete footing and timber main posts	
14	3/4" wide M.S Twisted Plate	No.	126.00	400	50,400 Ks.	For wind tie connecting Rafter & purlin	
15	Wood screw 1.5"	Doz	65.00	800	52,000 Ks.	For fitting use door and window leaves with hinges	
16	30 G CGI roofing sheet 7'	Sht.	160.00	21,000	3,360,000 Ks.	For whole building roofing	
17	2.5" Roofing Nails	viss	8.11	8,000	64,880 Ks.	For fixing CGI sheets and timber purlin line	
18	Ready made Aluzinc ridge cover 10'LX(2"-2'-6" width)	Sheets	6.00	28,000	168,000 Ks.	For covering CGI sheets angle joints at tip of roof	
19	30 Gauge Color Plain Sheet 3' wide	Sqft	240.00	950	228,000 Ks.	For front exterior doors and windows	
20	2"x2" GI Square Mesh-(8'x6')sheet	Sheets	11.00	35,000	385,000 Ks.	For interior front door & front window back	
21	4" butt hinge	No.	96.00	1,500	144,000 Ks.	For door and windows attach	
22	5" tower bolt	No.	80.00	1,500	120,000 Ks.	For door and window inner lock	
23	5" harsp & staple(large size)	No.	8.00	1,500	12,000 Ks.	For front interior door	
24	1'-0" sliding bolt	No.	8.00	7,000	56,000 Ks.	For front exterior door	
25	4" Bow handle	No.	56.00	1,000	56,000 Ks.	For door and window leaves	
26	6" Hook and eyes	Nos.	24.00	1,000	24,000 Ks.	For window leave keeping open	
27	Emulsion paint (UniteX/UPG)	Gal.	4.00	18,000	72,000 Ks.	For exterior wall bamboo mat paint	
28	Paint brush (4")	Nos.	4.00	1,500	6,000 Ks.	For paint use	
29	Enamel paint (C-20/Nippon)	Gal.	1.00	47,000	47,000 Ks.	For exterior beading paint	
30	Paint brush (3")	Nos.	2.00	1,200	2,400 Ks.	For paint use	
31	Turpentine	Bottle	2.00	5,000	10,000 Ks.	For enamel paint mixture	
32	Pad lock (To distribute before demolishing old shelters)	Pairs			0 Ks.	For Security of makeshifts and shelter rooms	

			Total(A)	29,660,563.84	Ks.	
B. PROFESSIONAL LABOR CHARGES						
1	Mason (@8 person/day for 5 days)	M/D	2.01	20,000	40,200 Ks.	For all masonry work of whole building
2	Carpenter (@ 6 person/day for 12 days)	M/D	107.40	20,000	2,148,000 Ks.	For all carpentry work of whole building
3	Bamboo worker (@10 person/day for 5 days)	M/D	45.00	20,000	900,000 Ks.	For all bamboo work of building walling & ceiling
4	Painter (@2 person/day for 3 days)	M/D	7.00	20,000	140,000 Ks.	For all painting work of exterior wall
5	General worker (@ 9 person/day for 10 days)	M/D	44.98	15,000	674,700 Ks.	For all general works of construction
			Total (B)	3,902,900	Ks.	
			(1) Sub Total (A+B)	33,563,463.8	Ks.	
			(2) Materials Transport charges	100,000.0	Ks.	Local transport charges of all construction need materials from sources to construction site warehouse (Include loading and unloading labor charges)
			(3) Contingency charge	150,000.0	Ks.	For coverage of unexpected damages and wastages along the way of construction work.
			Total (1+2+3) for (1) Shelter in MMK	33,813,463.84	Ks.	
			Say Total cost for (1) Shelter Reconstruction in MMK	33,800,000.00	Ks.	
			Say Total cost for (1) Shelter Reconstruction in USD	9,797.10	USD	Exchange rate: 1USD = 3450 MMK

Prepared by;

Verified by:

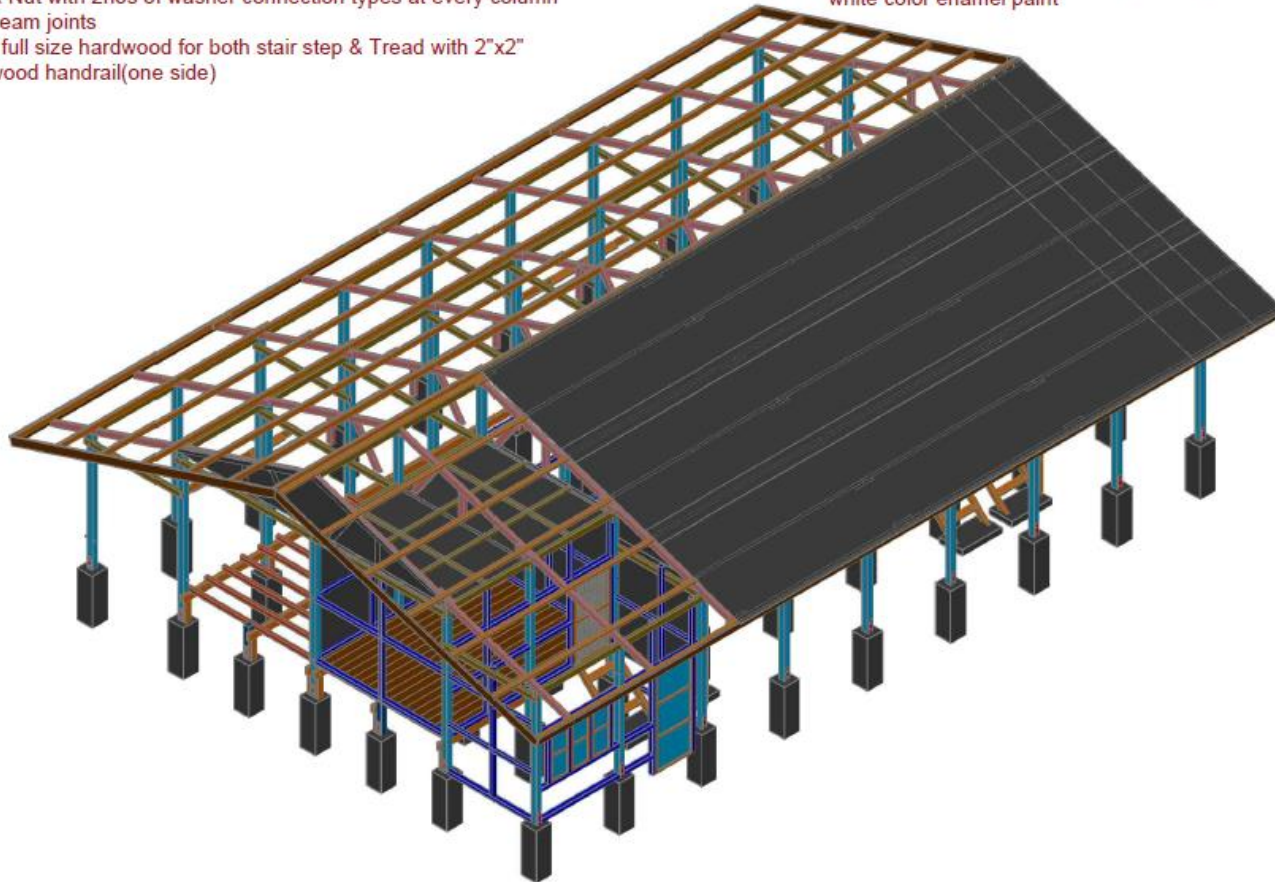
Shelter Unit
UNHCR/STW

Sviatoslav Savchuk
UNHCR/STW

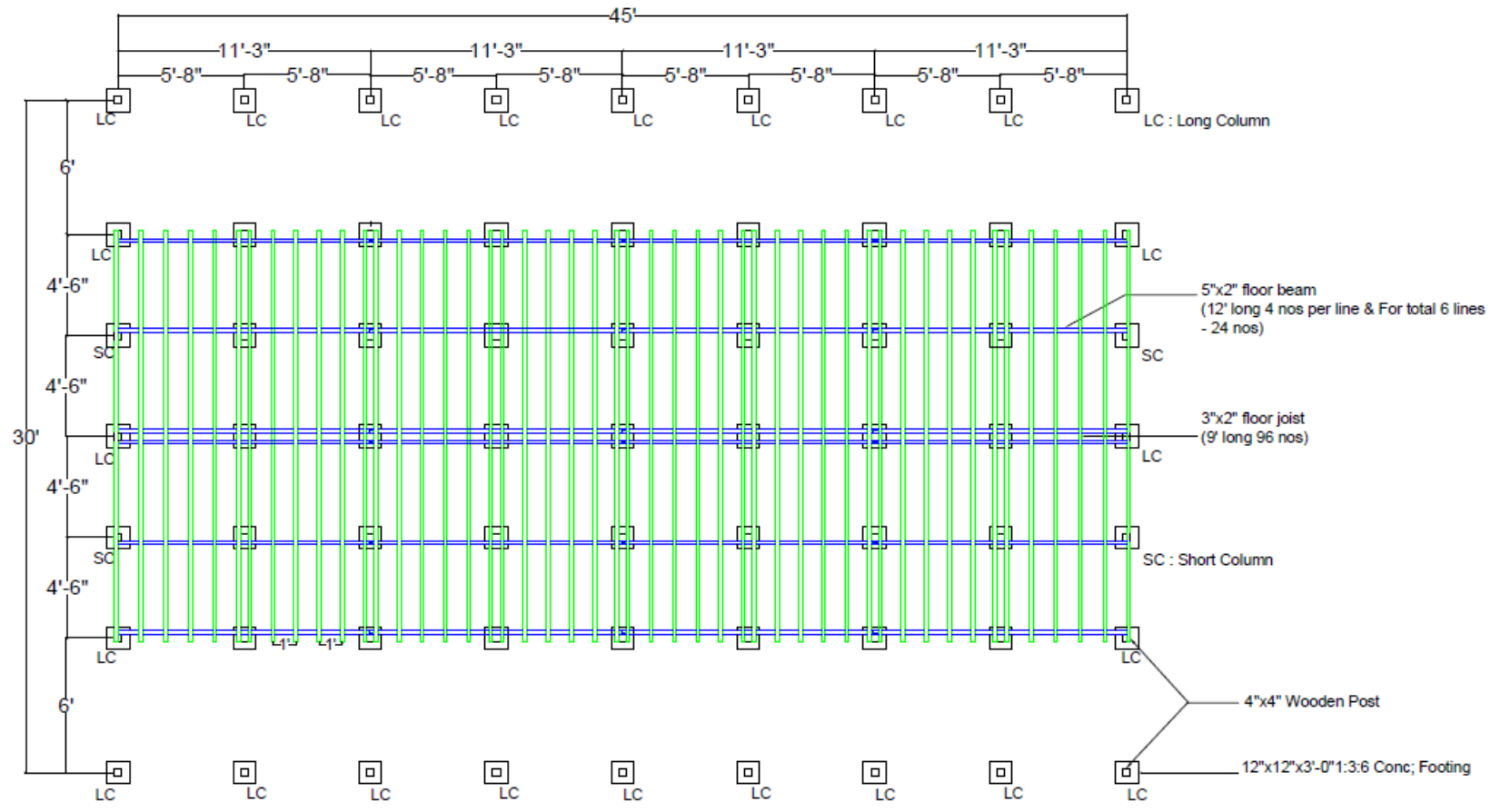
Temporary Long Houses Rooms Full Rehabilitation Frame work

Specifications

- (a) 4"x4" full size hardwood for all column
- (b) 5"x2" full size hardwood for floor beam
- (c) Double floor beam @ main post
- (d) 4"x2" full size hardwood for post/wall plate, floor beam strut and roof rafter
- (e) 3"x2" full size hardwood for floor joists
- (f) 6"x1" full size hardwood for floor plank
- (g) All timber roof frame (rafter & purlin) are to be firmly fixed with one nos of MS twist plate @ every joints
- (h) 3"x2" full size hardwood for purlin
- (i) 6"x1" full size hardwood Eave & Verg board
- (j) 30G CGI roofing sheet work by UNHCR provided and 2' to 2'-6" wide Readymade Ridge cover plain sheet
- (k) Bolt & Nut with 2nos of washer connection types at every column and beam joints
- (l) 5"x2" full size hardwood for both stair step & Tread with 2"x2" hardwood handrail(one side)
- (m) Exterior Door (2'-6"x6'-0") Plain sheet door
- (n) Interior Door (2'-6"x6'-0") GI square Mesh door
- (o) Window (4'-0"x3'-0") 3 leaves with plain sheet +GI square mesh for window security
- (p) Bamboo mat walling at exterior, front interior and kitchen partition wall
- (q) 5 layer plywood walling at middle partition and bed room partition
- (r) Bamboo mat ceiling with 2"x2" frame @ 3'c/c and 3"x $\frac{1}{2}$ " full size timber beading
- (s) Exterior walling painting work by enamel paint and wall beading are white color enamel paint



**Temporary Shelter (45'x30'x7'-6") of Short Legged Type
Floor Beam & Joist Plan**

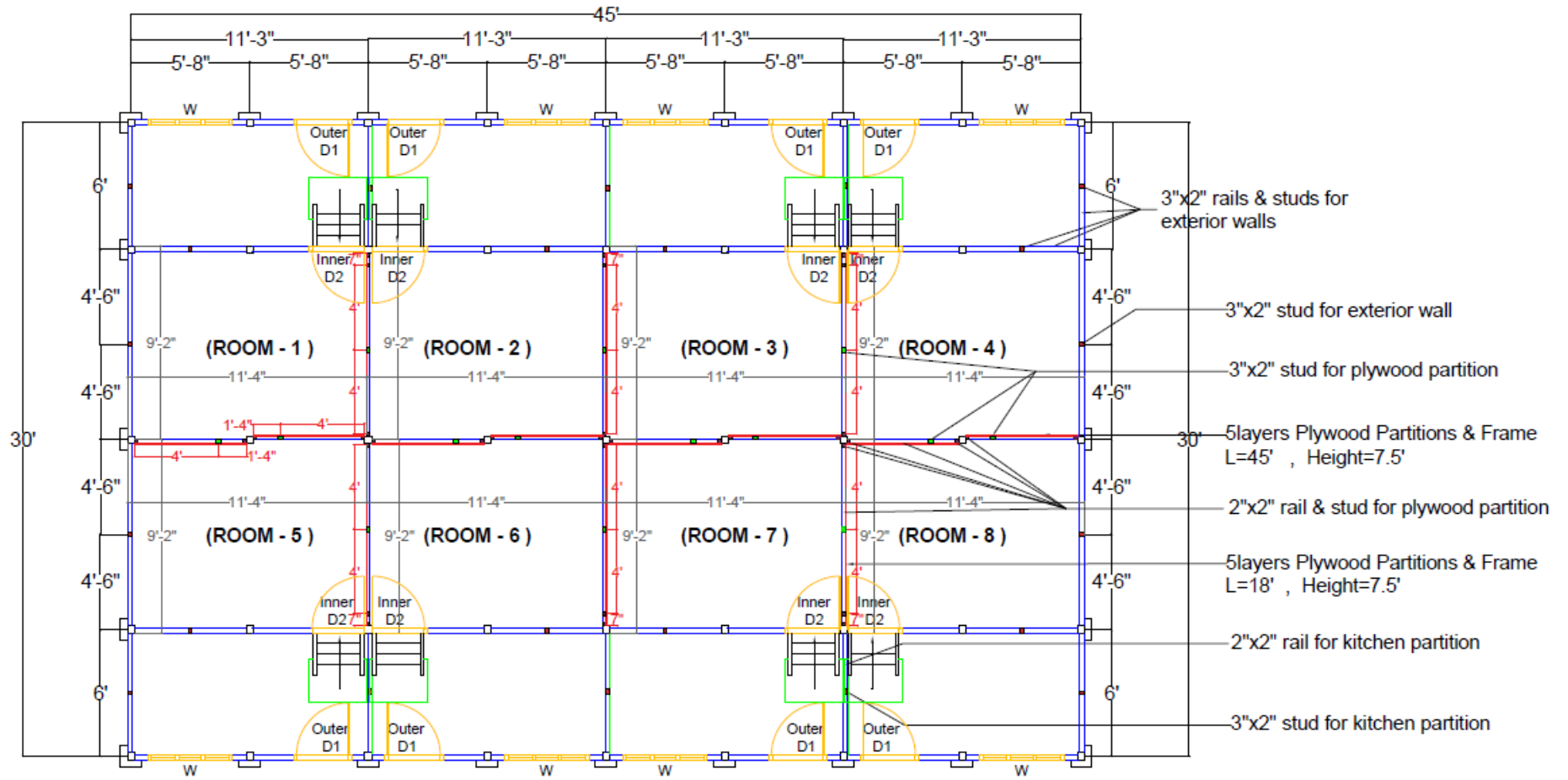


Plan View Of Floor Beams & Joists

Floor Beam & Joist Plan View In Temporary Shelter	
Project: Temporary Shelter Reconstruction	
Title: Plan view of floor beam & Joist	
Scale: As Shown	Date: 1,January,2022
Drawing No: 01	



**Temporary Shelter (45'x30'x7'-6") of Short Legged Type
Partition Wall-Frame**



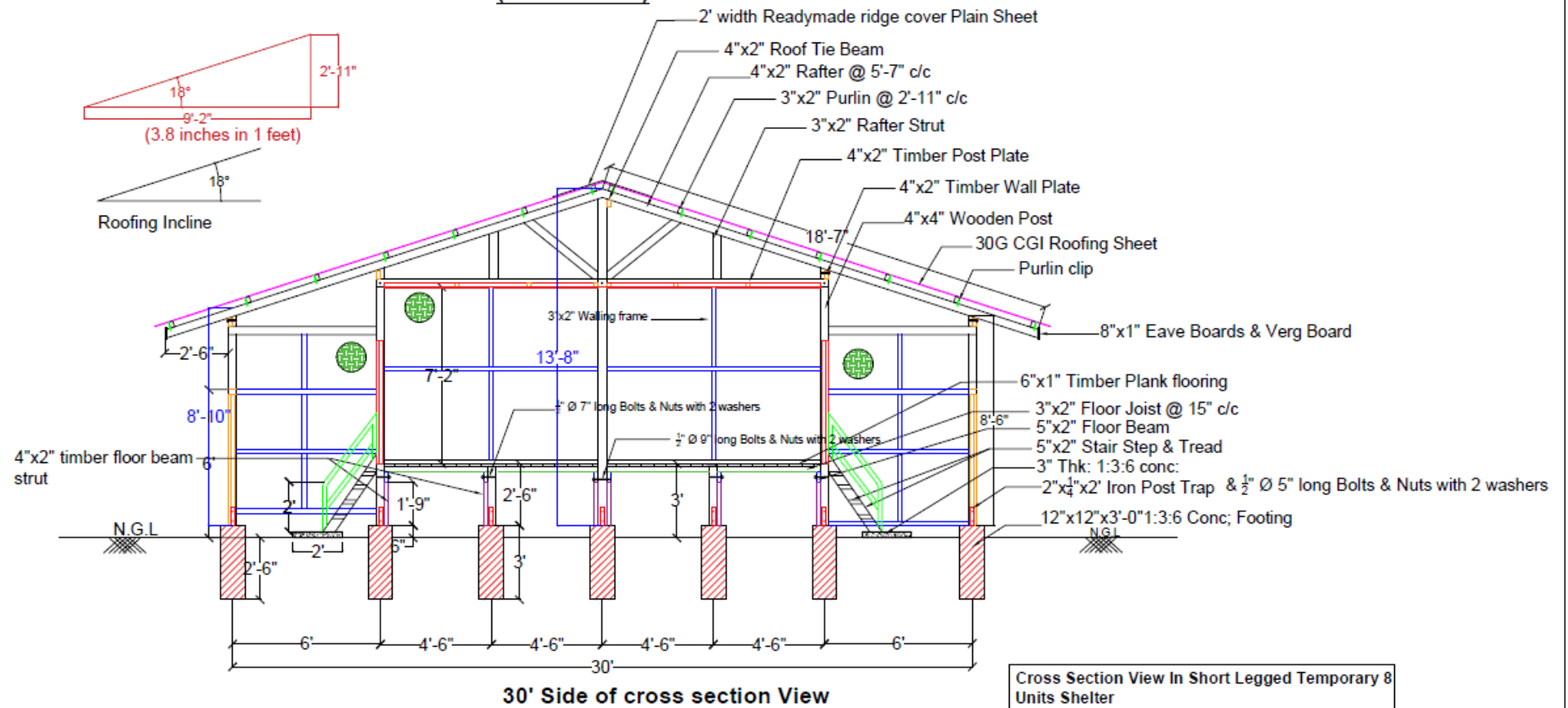
Plan View Of Partition & Frame

Partition Wall-Frame View In Temporary Shelter	
Project: Temporary Shelter Reconstruction	
Title: Plan view of partition & Frame	
Scale: As Shown	Date: 1, January, 2022
Drawing No: 02	



SHORT LEGGED TEMPORAY 8 UNITS SHELTER

(45'x30'x7'-6")



Cross Section View In Short Legged Temporary 8 Units Shelter

Project: Temporary Shelter Reconstruction

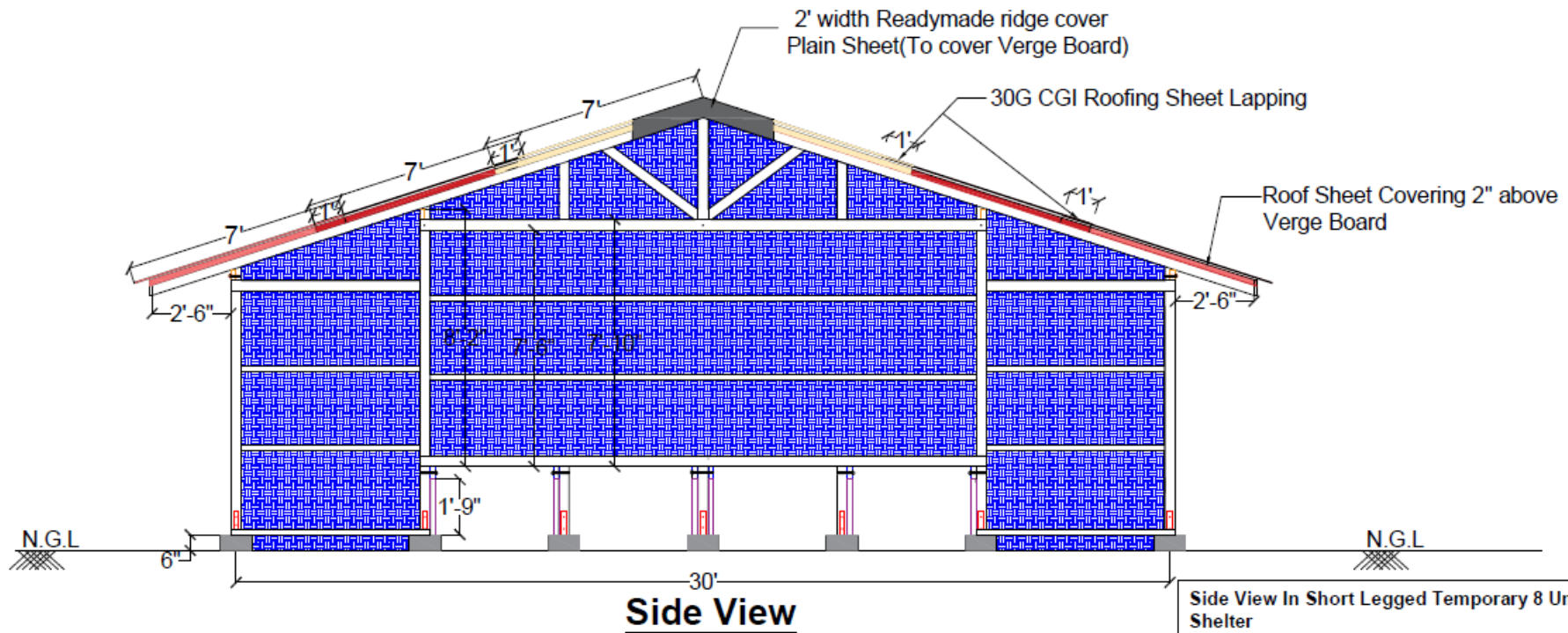
Title: 30' Side of Cross Section View

Scale: As Shown

Date: 1, January, 2022

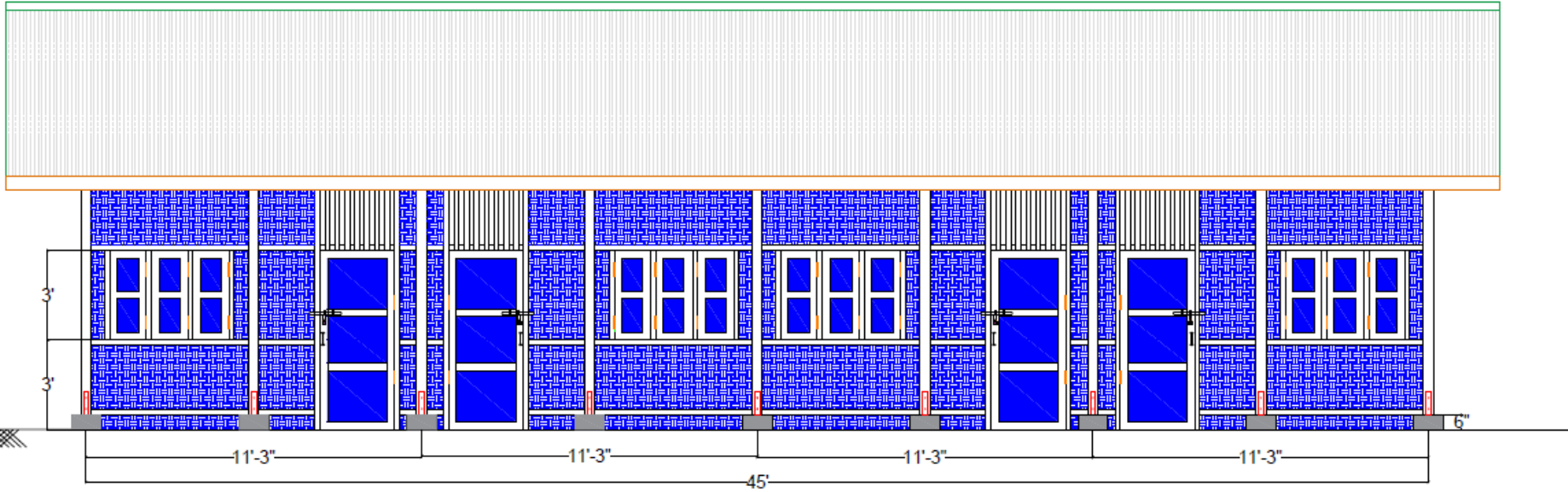
Drawing No: 04

SHORT LEGGED TEMPORARY 8 UNITS SHELTER
(45'x30'x7'-6")



Side View In Short Legged Temporary 8 Units Shelter	
Project: Temporary Shelter Reconstruction	
Title:	Side View
Scale:	As Shown
Date:	1, Dec, 2021
Drawing No:	14

SHORT LEGGED TEMPORARY 8 UNITS SHELTER
(45'x30'x7'-6")



Front & Back View

Front & Back View In Short Legged Temporary 8 Units Shelter	
Project: Temporary Shelter Reconstruction	
Title: Front & Back View	
Scale: As Shown	Date: 1, January, 2022
Drawing No: 15	

Annex 2- 2022 Design and Bill of Quantities of Temporary Long Leg Shelter



BILL OF QUANTITIES FOR
Long Leg Design 8 Units Shelter Reconstruction
(45' x 30' x 7'-6")



Sr. No.	Particulars	Unit	Quantity	Rate (Ks.)	Amount (Ks.)	Purpose
A. MATERIALS COST						
1	Cement (Rhino/Crown)	Bag	25.00	16,500	412,500 Ks.	For footing 63 nos.
2	Sand	Cft.	100.00	750	75,000 Ks.	For footing 63 nos.
3	Aggregate	Cft.	200.00	7,000	1,400,000 Ks.	For footing 63 nos.
4	Wire nail	viss	54.93	8,000	439,440 Ks.	For general installation of timber structures
5	1" Dia Bamboo Pool	No	2,890.00	3,000	8,670,000 Ks.	For round exterior wall, front interior wall & ceiling
6	5 plywood(8'x4')	Sheets	27.16	25,000	679,004 Ks.	For interior partition cover
7	Hard wood	Cft.	530.00	28,000	14,840,000 Ks.	For building overall structures
8	1/2" Φ x5" bolt & nut	Set	126.00	900	113,400 Ks.	For connecting MS strap and timber main posts
9	1/2" Φ x6" bolt & nut	Set	25.00	1,100	27,500 Ks.	For connecting post plate/roof beam to main post
10	1/2" Φ x7" bolt & nut	Set	72.00	1,300	93,600 Ks.	For connecting main posts and single floor beam
11	1/2" Φ x9" bolt & nut	Set	9.00	1,600	14,400 Ks.	For connecting main posts and double floor beam
12	1/2" Φ washers	Pic	464.00	100	46,400 Ks.	For bolt & nut fitting
13	M.S Post Trap(2'x1/4"x2") (medium quality)	No.	63.00	7,000	441,000 Ks.	For connecting concrete footing and timber main posts
14	3/4" wide M.S Twisted Plate	No.	126.00	400	50,400 Ks.	For wind tie connecting Rafter & purlin
15	wood screw 1.5"	Doz	65.00	800	52,000 Ks.	For fitting use door and window leaves with hinges
16	30 G CGI roofing sheet 7'	Sht.	160.00	21,000	3,360,000 Ks.	For whole building roofing
17	2.5" Roofing Nails	viss	8.11	8,000	64,880 Ks.	For fixing CGI sheets and timber purlin line
18	Ready made Aluzinc ridge cover 10' LX(2"-2'-6" width)	Sheets	6.00	28,000	168,000 Ks.	For covering CGI sheets angle joints at tip of roof
19	30 Gauge Color Plain Sheet 3' wide	Sqft	240.00	950	228,000 Ks.	For front exterior doors and windows
20	2'x2' GI Square Mesh-(8'x6') sheet	Sheets	11.00	35,000	385,000 Ks.	For interior front door & front window back
21	4" butt hinge	No.	96.00	1,500	144,000 Ks.	For door and windows attach
22	5" tower bolt	No.	80.00	1,500	120,000 Ks.	For door and window inner lock
23	5" harsp & staple(large size)	No.	8.00	1,500	12,000 Ks.	For front interior door
24	1'-0" sliding bolt	No.	8.00	7,000	56,000 Ks.	For front exterior door
25	Bow handle	No.	56.00	1,000	56,000 Ks.	For door and window leaves

26	6" Hook and eyes	Nos.	24.00	1,000	24,000 Ks.	For window leave keeping open
27	Emulsion paint	Gal.	4.00	18,000	72,000 Ks.	For exterior wall bamboo mat paint
28	Paint brush (6")	Nos.	4.00	1,500	6,000 Ks.	For paint use
29	Enamel paint (C-20/Nippon)	Gal.	1.00	47,000	47,000 Ks.	For exterior beading paint
30	Paint brush (3")	Nos.	2.00	1,200	2,400 Ks.	For paint use
31	Turpentine	Bottle	2.00	5,000	10,000 Ks.	For enamel paint mixture
32	Pad lock (To distribute before demolishing old shelters)	Pairs	8.00		Ks.	For Security of makeshifts and shelter rooms

Total(A)					32,109,923.84 Ks.	
B. PROFESSIONAL LABOR CHARGES						
1	Mason (@8 person/day for 5 days)	M/D	2.01	20,000	40,200 Ks.	For all masonry work of whole building
2	Carpenter (@ 6 person/day for 12 days)	M/D	112.49	20,000	2,249,800 Ks.	For all carpentry work of whole building
3	Bamboo worker (@10 person/day for 5 days)	M/D	42.00	20,000	840,000 Ks.	For all bamboo work of building walling & ceiling
4	Painter (@2 person/day for 3 days)	M/D	7.00	20,000	140,000 Ks.	For all painting work of exterior wall
5	General worker (@ 9 person/day for 10 days)	M/D	44.98	15,000	674,700 Ks.	For all general works of construction
Total (B)					3,944,700 Ks.	
(1) Sub Total (A+B)					36,054,623.8 Ks.	
(2) Materials Transport charges					100,000.0 Ks.	Local transport charges of all construction need materials from sources to construction site warehouse (Include loading and unloading labor charges)
(3) Contingency charge					150,000.0 Ks.	For coverage of unexpected damages and wastages along the way of construction work.
Total (1+2+3) for (1) Shelter in MMK					36,304,623.84 Ks.	
Say Total cost for (1) Shelter Reconstruction in MMK					36,300,000.00 Ks.	
Say Total cost for (1) Shelter Reconstruction in USD					10,521.74 USD	Exchange Rate: 1USD = 3450 MMK

Prepared by:

Verified by:

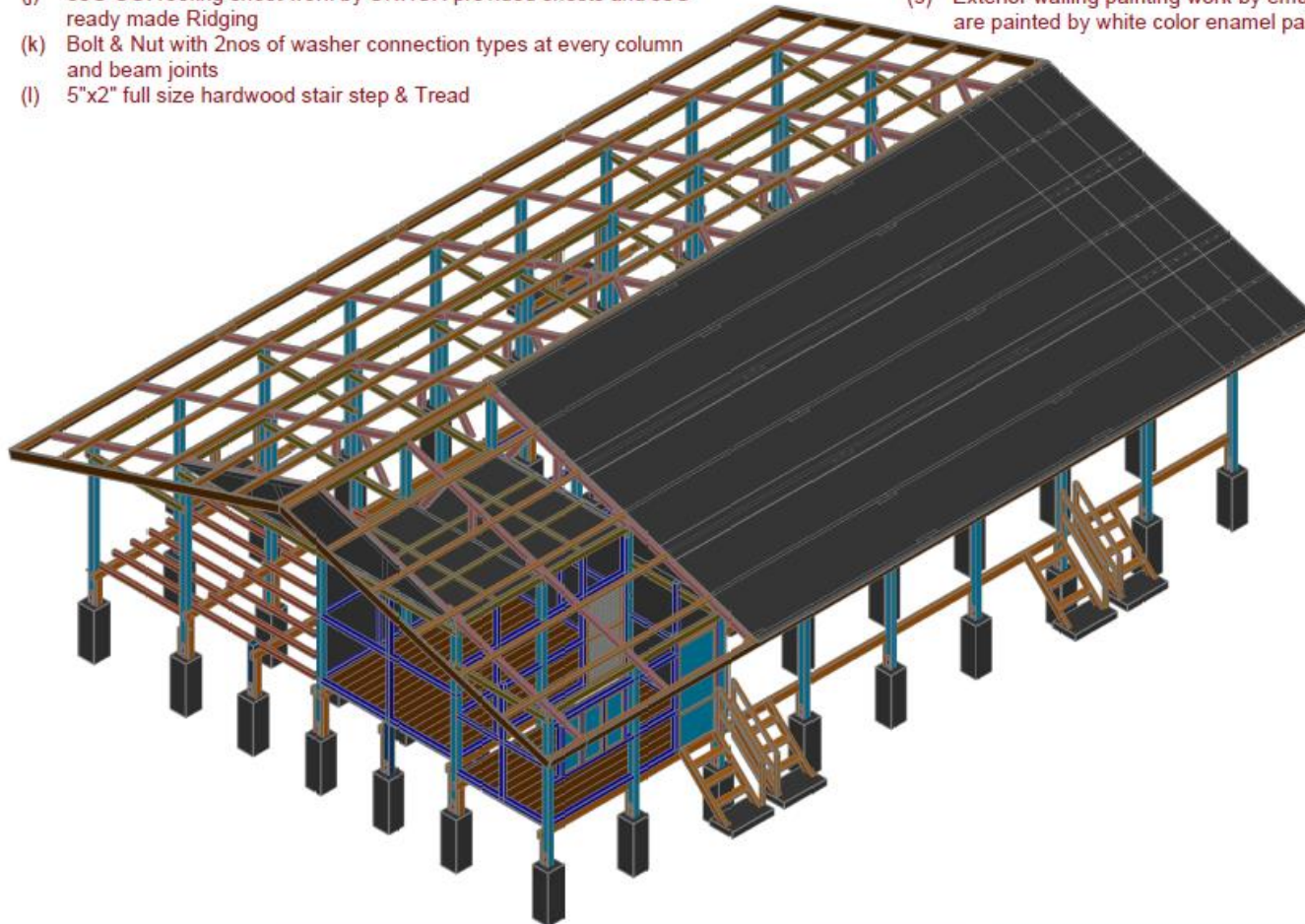
Shelter Unit
UNHCR/STW

Sviatoslav Savchuk
UNHCR/STW

Temporary Long Houses Rooms Full Rehabilitation Frame work

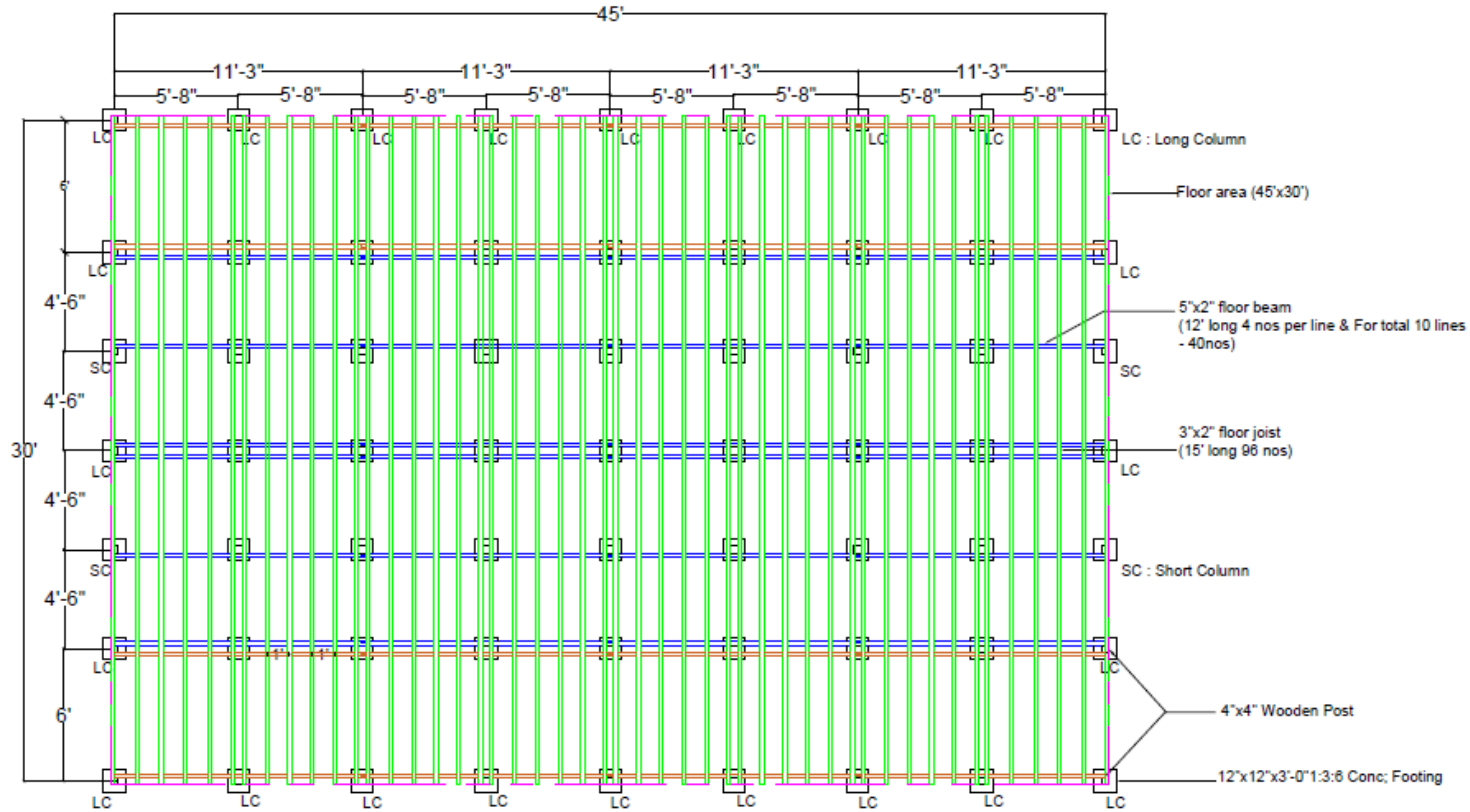
Specifications

- (a) 4"x4" full size hardwood for all column
- (b) 5"x2" full size hardwood for floor beam
- (c) Double floor beam @ main post
- (d) 4"x2" full size hardwood for post/wall plate, floor beam strut and roof rafter
- (e) 3"x2" full size hardwood for floor joists
- (f) 6"x1" full size hardwood for floor plank
- (g) All timber roof frame (rafter & purlin) are to be firmly fixed with 2 nos of MS twist plate @ every joints
- (h) 3"x2" full size hardwood for purlin
- (i) 8"x1" full size hardwood Eave & Verg board
- (j) 30G CGI roofing sheet work by UNHCR provided sheets and 30G ready made Ridging
- (k) Bolt & Nut with 2nos of washer connection types at every column and beam joints
- (l) 5"x2" full size hardwood stair step & Tread
- (m) Exterior Door (2'-6"x6'-0") plain sheet door
- (n) Interior Door (2'-6"x6'-0") GI square Mesh door
- (o) Window (4'-0"x3'-0") 3 leaves with plain sheet +GI square mesh for window security
- (p) Bamboo mat walling at exterior, front interior and kitchen partition wall
- (q) 5 layer plywood walling at middle partition and bed room partition
- (r) Bamboo mat ceiling with 2"x2" frame @ 3'c/c and 3"x $\frac{1}{2}$ " full size timber beading
- (s) Exterior walling painting work by emulsion paint and wall beadings are painted by white color enamel paint



Temporary Shelter (45'x30'x7'-6") of Long Legged Type

Floor Beam & Joist Plan



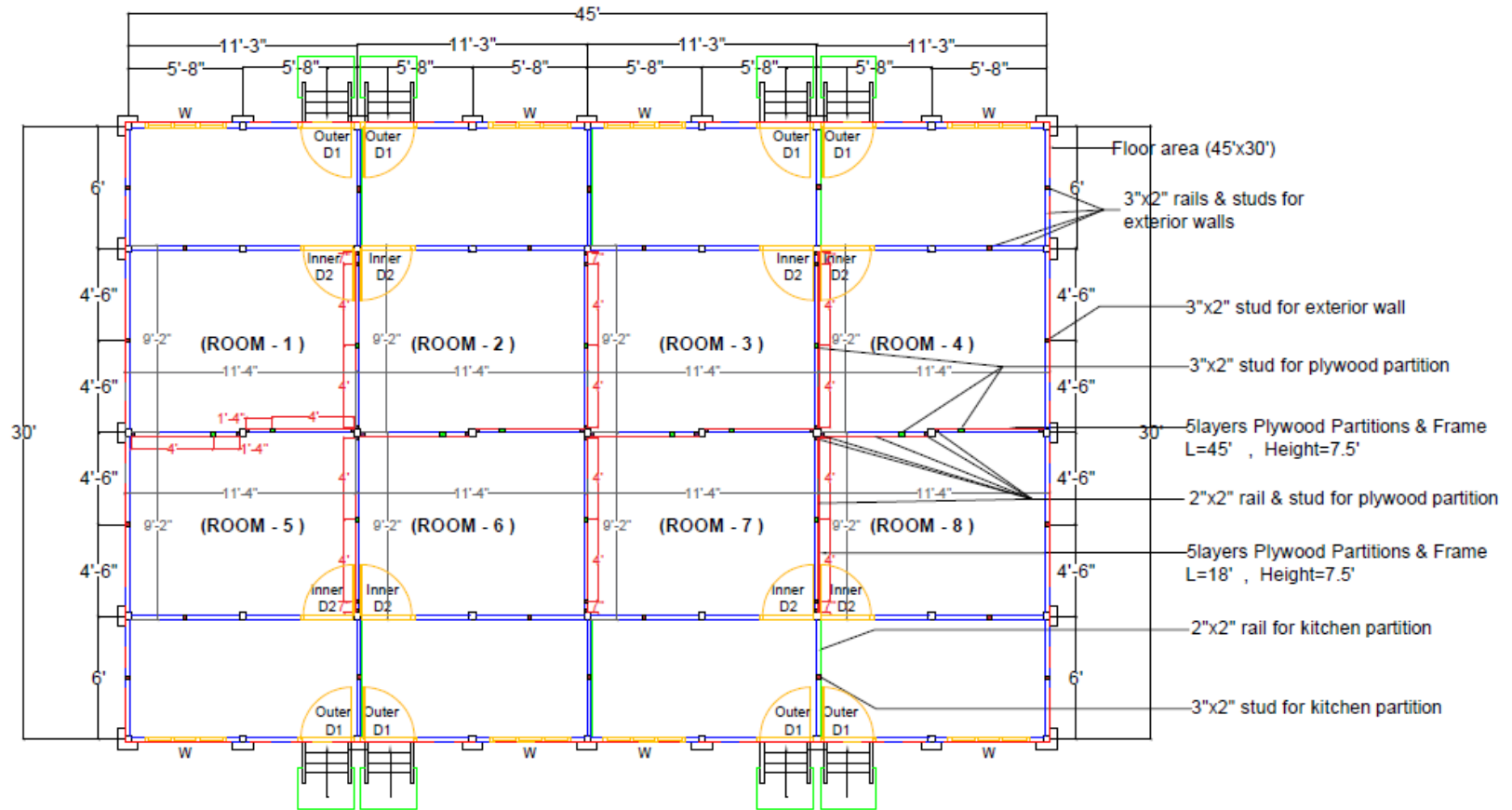
Plan View Of Floor Beams & Joists

Floor Beam & Joist Plan View In Temporary Shelter	
Project: Temporary Shelter Reconstruction	
Title: Plan view of floor beam & Joist	
Scale: As Shown	Date: 1, January, 2022
Drawing No.: 01	



Temporary Shelter (45'x30'x7'-6") of Long Legged Type

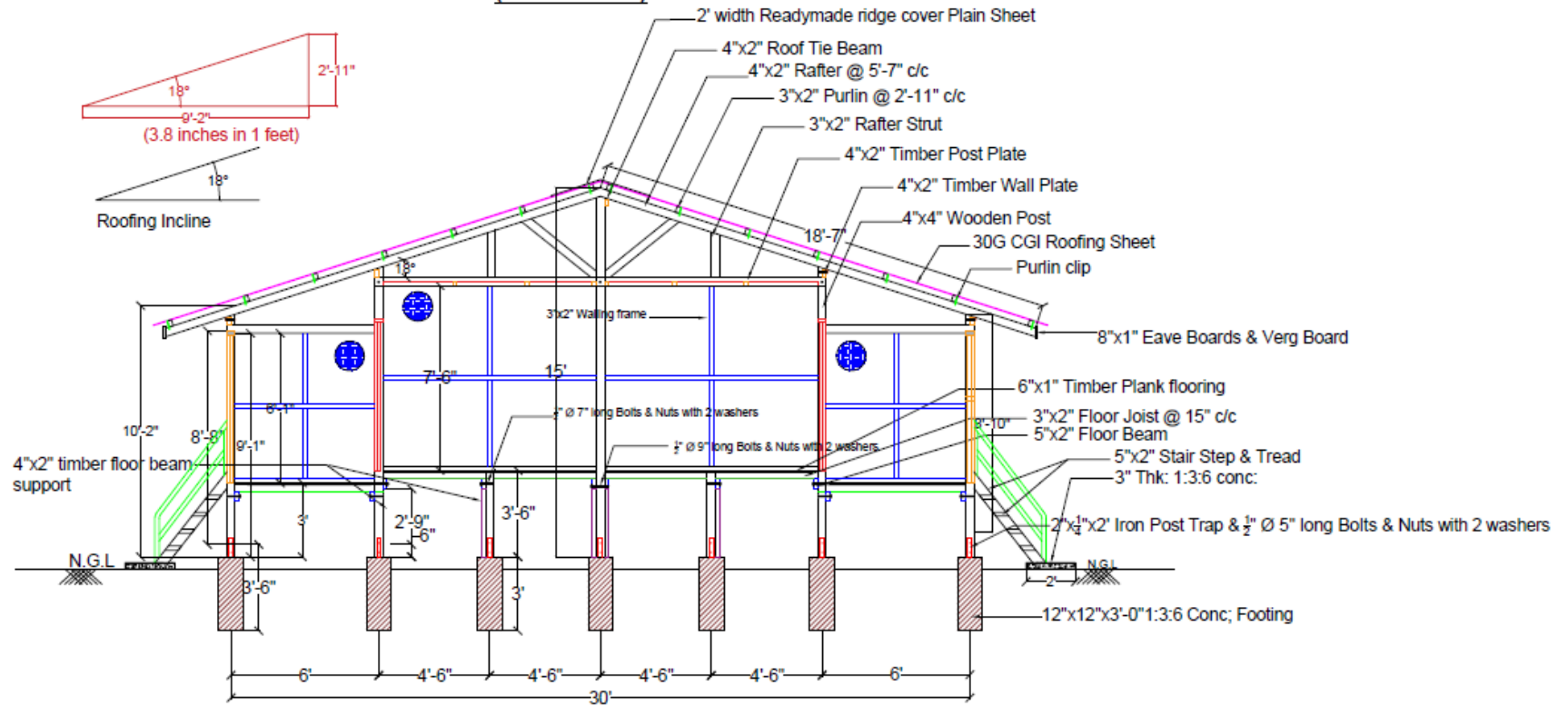
Partition Wall-Frame



Plan View Of Partition & Frame

Partition Wall-Frame View In Temporary Shelter	
Project: Temporary Shelter Reconstruction	
Title: Plan view of partition & Frame	
Scale: As Shown	Date: 1 January, 2022
Drawing No: 02	

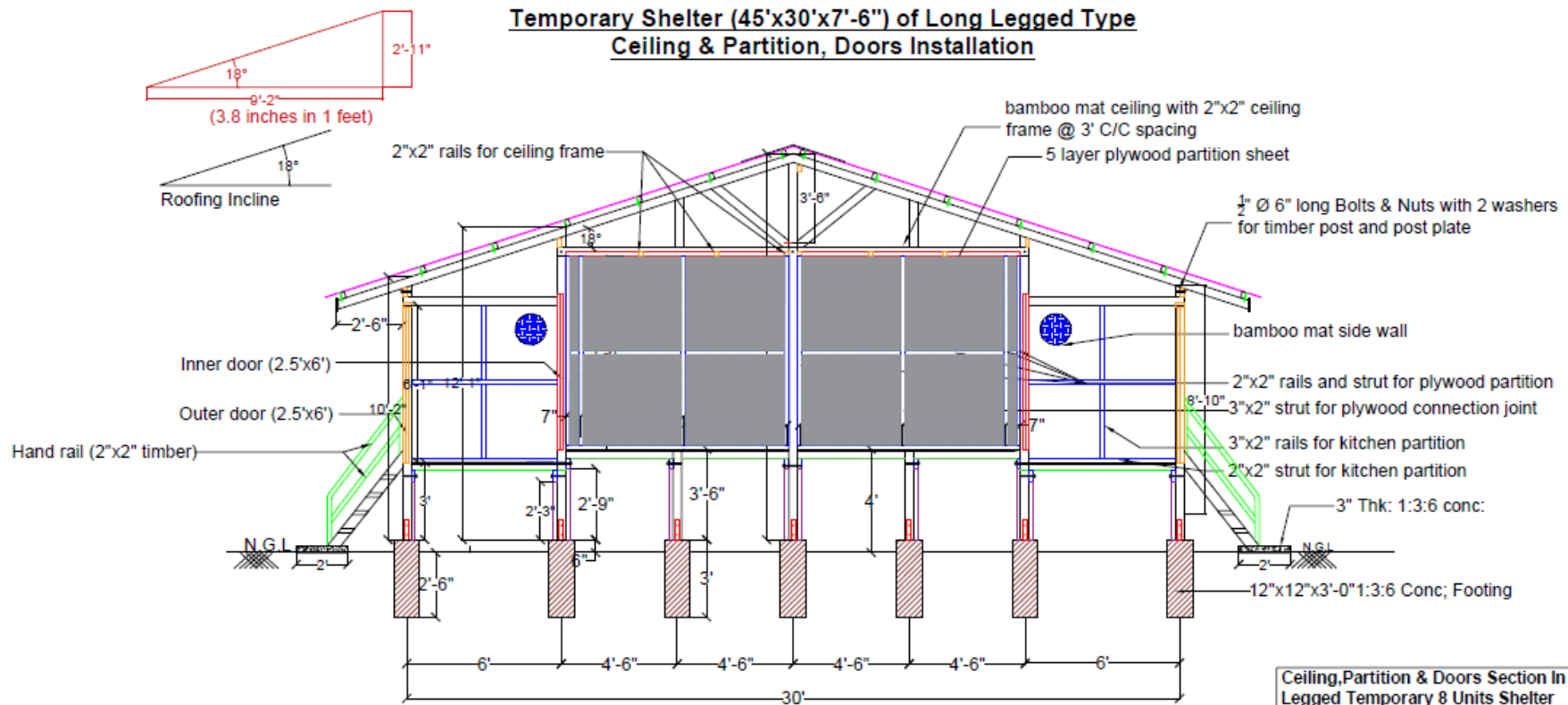
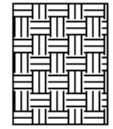
**LONG LEGGED TEMPORAY 8 UNITS SHELTER
(45'x30'x7'-6")**



30' Side of cross section View

Cross Section View In Long Legged Temporary 8 Units Shelter	
Project: Temporary Shelter Reconstruction	
Title: 30' Side of Cross Section View	
Scale: As Shown	Date: 1, January, 2022
Drawing No: 04	

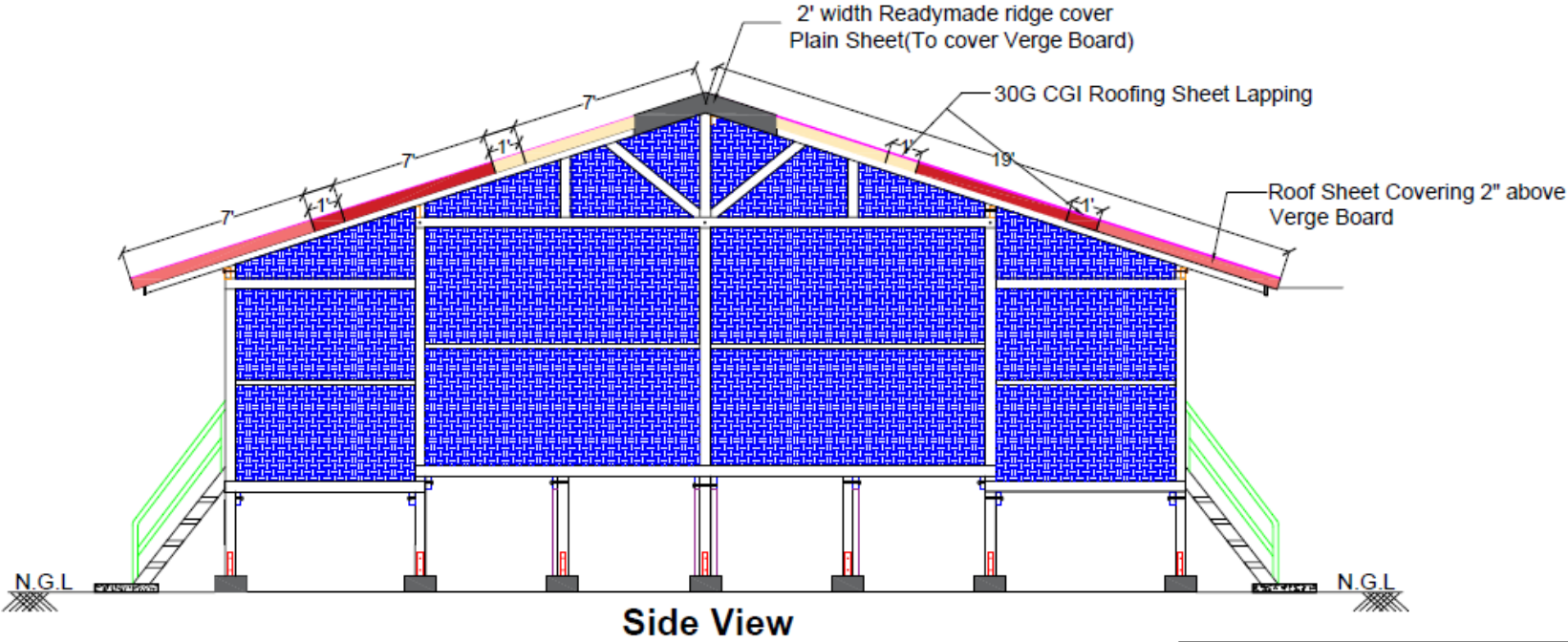
**Temporary Shelter (45'x30'x7'-6") of Long Legged Type
Ceiling & Partition, Doors Installation**



30' Side of cross section shown partition, ceiling frames and doors

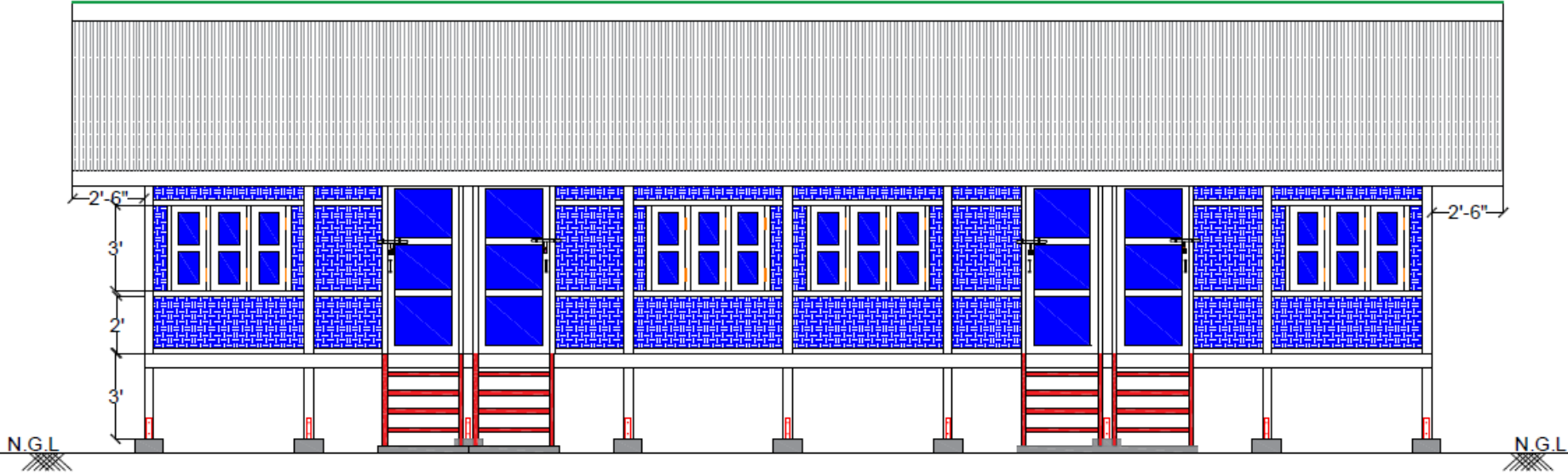
Ceiling, Partition & Doors Section In Long Legged Temporary 8 Units Shelter	
Project: Temporary Shelter Reconstruction	
Title:	30' side of cross section partition, ceiling & doors
Scale:	As Shown
Date:	1, January, 2022
Drawing No:	05

LONG LEGGED TEMPORARY 8 UNITS SHELTER
(45'x30'x7'-6")



Side View In Long Legged Temporary 8 Units Shelter	
Project: Temporary Shelter Reconstruction	
Title:	Side View
Scale:	As Shown
Date:	1, Dec, 2021
Drawing No:	14

LONG LEGGED TEMPORARY 8 UNITS SHELTER
(45'x30'x7'-6")



Front & Back View

Front & Back View In Long Legged Temporary 8 Units Shelter

Project: Temporary Shelter Reconstruction

Title: Front & Back View

Scale: As Shown

Date: 1, Jan,2022

Drawing No: 15

Annex 3- 2022 Design and Bill of Quantities of Temporary 10 Units Short leg shelter



BILL OF QUANTITIES FOR
Short Leg Design 10 Units Shelter Reconstruction
(45' x 30' x 7'-6")



Sr. No.	Particulars	Unit	Quantity	Rate (Ks.)	Amount (Ks.)	Purpose
A. MATERIALS COST						
1	Cement (Rhino/Crown)	Bag.	31.63	16,500	521,895 Ks.	For footing 63 nos.
2	Sand	Cft.	118.08	750	88,560 Ks.	For footing 63 nos.
3	Aggregate	Cft.	236.16	7,000	1,653,120 Ks.	For footing 63 nos.
4	Wire nail	viss	55.58	8,000	444,640 Ks.	For general installation of timber structures
5	1" Dia Bamboo Pole	No	3,140.00	3,000	9,420,000 Ks.	For round exterior wall, front interior wall & ceiling
6	5 plywood(8'x4')	Sheets	32.01	25,000	800,293 Ks.	For interior partition cover
7	Hard wood	Cft.	500.00	28,000	14,000,000 Ks.	For building overall structures
8	1/2" Φ x5" bolt & nut	Set	154.00	900	138,600 Ks.	For connecting MS strap and timber main posts
9	1/2" Φ x6" bolt & nut	Set	30.00	1,100	33,000 Ks.	For connecting post plate/roof beam to main post
10	1/2" Φ x7" bolt & nut	Set	44.00	1,300	57,200 Ks.	For connecting main posts and single floor beam
11	1/2" Φ x9" bolt & nut	Set	11.00	1,600	17,600 Ks.	For connecting main posts and double floor beam
12	1/2" Φ washers	Pic	478.00	100	47,800 Ks.	For bolt & nut fitting
13	M.S Post Trap(2x1/4"x2") (medium quality)	No.	77.00	7,000	539,000 Ks.	For connecting concrete footing and timber main posts
14	3/4" wide M.S Twisted Plate	No.	154.00	400	61,600 Ks.	For wind tie connecting Rafter & purlin
15	Wood screw 1.5"	Doz	80.00	800	64,000 Ks.	For fitting use door and window leaves with hinges
16	30 G CGI roofing sheet 7'	Sht.	160.00	21,000	3,360,000 Ks.	For whole building roofing
17	2.5" Roofing Nails	viss	8.11	8,000	64,880 Ks.	For fixing CGI sheets and timber purlin line
18	Ready made Aluzinc ridge cover 10'LX(2" x2'-6" width)	Sheets	6.00	28,000	168,000 Ks.	For covering CGI sheets angle joints at tip of roof
19	30 Gauge Color Plain Sheet 3' wide	Sqft	300.00	950	285,000 Ks.	For front exterior doors and windows
20	2"x2" GI Square Mesh (8'x6') sheet	Sheets	12.00	35,000	420,000 Ks.	For interior front door & front window back
21	4" butt hinge	No.	120.00	1,500	180,000 Ks.	For door and windows attach
22	5" tower bolt	No.	116.00	1,500	174,000 Ks.	For door and window inner lock
23	5" harsp & staple (large size)	No.	10.00	1,500	15,000 Ks.	For front interior door
24	1'-0" sliding bolt	No.	10.00	7,000	70,000 Ks.	For front exterior door
25	4" Bow handle	No.	50.00	1,000	50,000 Ks.	For door and window leaves
Total(A)					32,841,587.91 Ks.	
B. PROFESSIONAL LABOR CHARGES						
1	Mason	M/D	2.46	20,000	49,200 Ks.	For all masonry work of whole building
2	Carpenter	M/D	133.92	20,000	2,678,400 Ks.	For all carpentry work of whole building
3	Bamboo worker	M/D	51.00	20,000	1,020,000 Ks.	For all bamboo work of building walling & ceiling
4	Painter	M/D	7.00	20,000	140,000 Ks.	For all painting work of exterior wall
5	General worker	M/D	50.53	15,000	757,950 Ks.	For all general works of construction
Total (B)					4,645,550 Ks.	
(1) Sub Total (A+B)					37,487,137.9 Ks.	
(2) Materials Transport charges					100,000.0 Ks.	Local transport charges of all construction need materials from sources to construction site warehouse (Include loading and unloading labor charges)
(3) Contingency charge					150,000.0 Ks.	For coverage of unexpected damages and wastages along the way of construction work.
Total (1+2+3) for (1) Shelter in MMK					37,737,137.91 Ks.	
Say Total cost for (1) Shelter Reconstruction in MMK					37,700,000.00 Ks.	
Say Total cost for (1) Shelter Reconstruction in USD					10,927.54 USD	<i>Exchange rate: 1USD = 3450 MMK</i>

Prepared by:

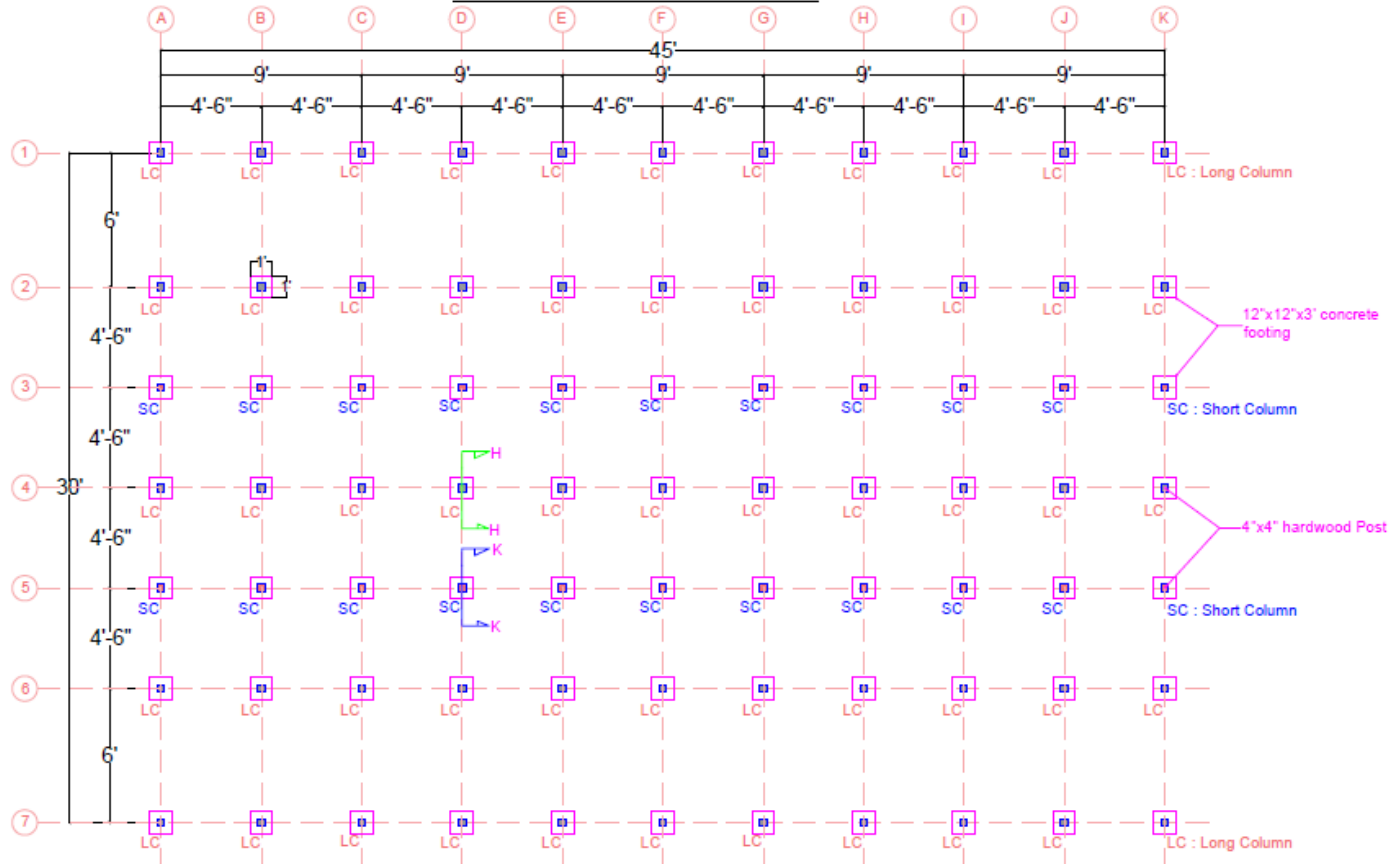
Verified by:

Shelter Unit
UNHCR/STW

Sviatoslav Savchuk
UNHCR/STW

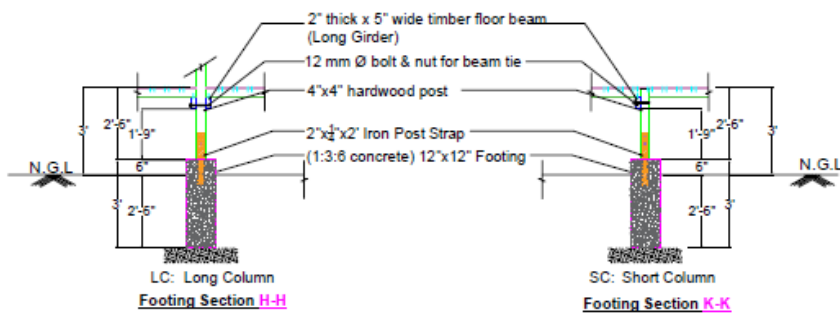
SHORT LEGGED TEMPORARY 10 UNITS SHELTER (45' X 30' X 7'-6")

FOOTING & COLUMN LAYOUT PLAN

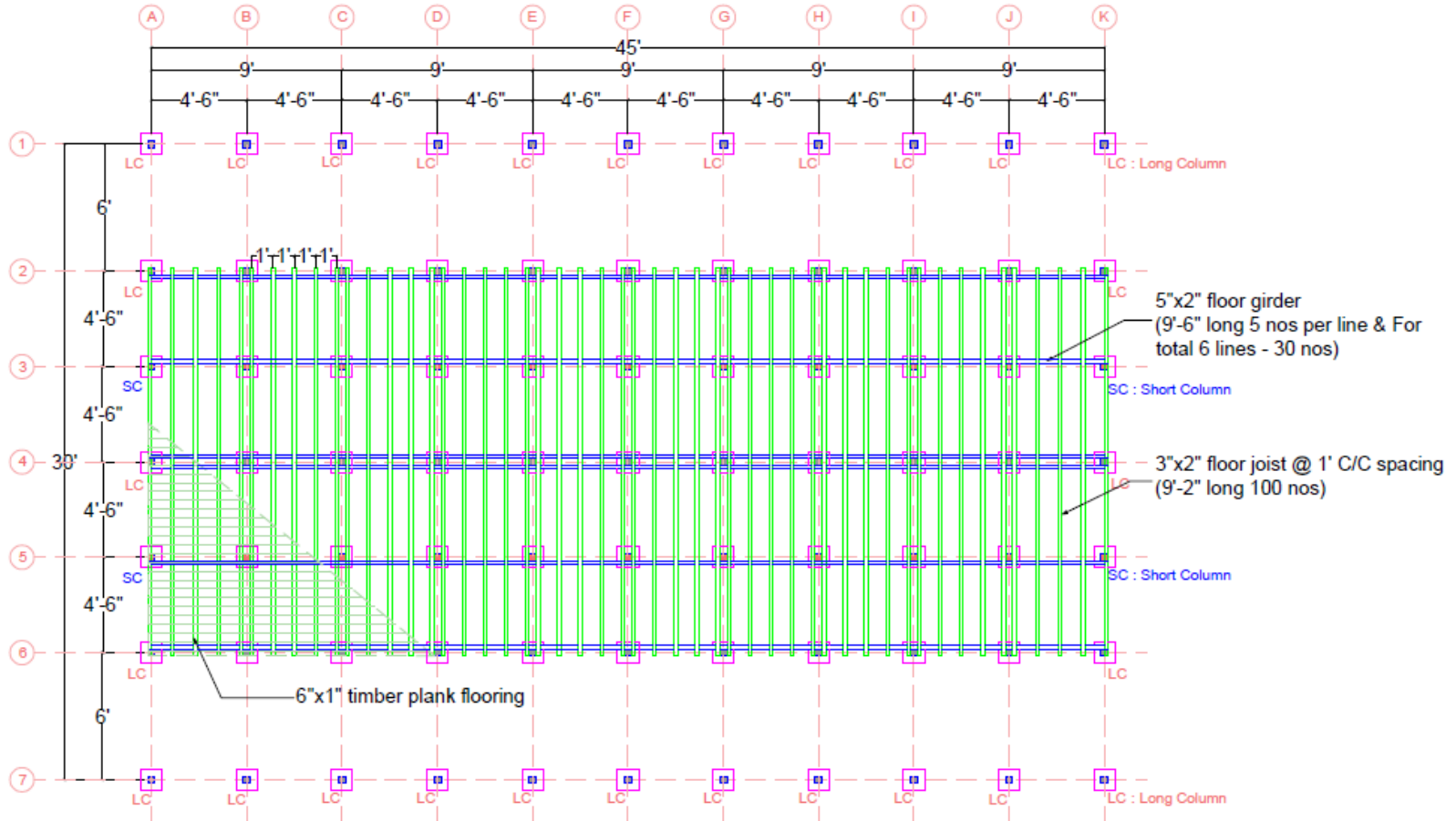


FOOTING & COLUMN LAYOUT PLAN

FOOTING & COLUMN LAYOUT PLAN	
Project: 10 Units shelter reconstruction(short leg)	
Title:	Footing & Column Layout Plan
Scale:	As Shown
Date:	23, Mar,2022
Drawing Page No:	01

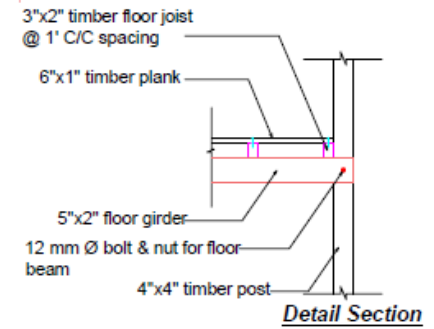


SHORT LEGGED TEMPORY 10 UNITS SHELTER (45' X 30' X 7'-6")
FLOOR FARMING PLAN

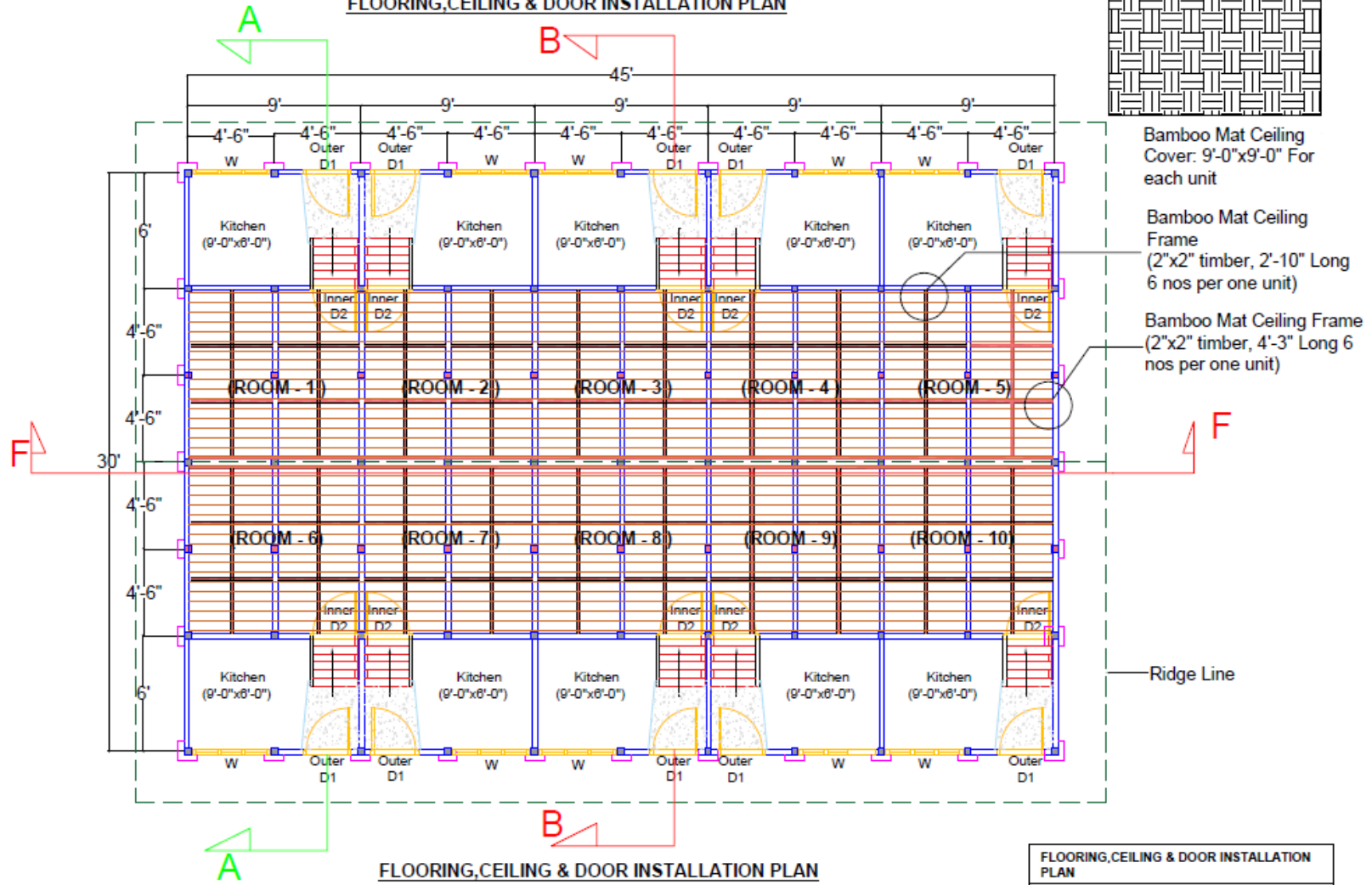


FLOOR FARMING PLAN

FLOOR FARMING PLAN	
Project: 10 Units shelter reconstruction(short leg)	
Title: Floor Farming Plan	
Scale: As Shown	Date: 23, Mar, 2022
Drawing Page No: 02	



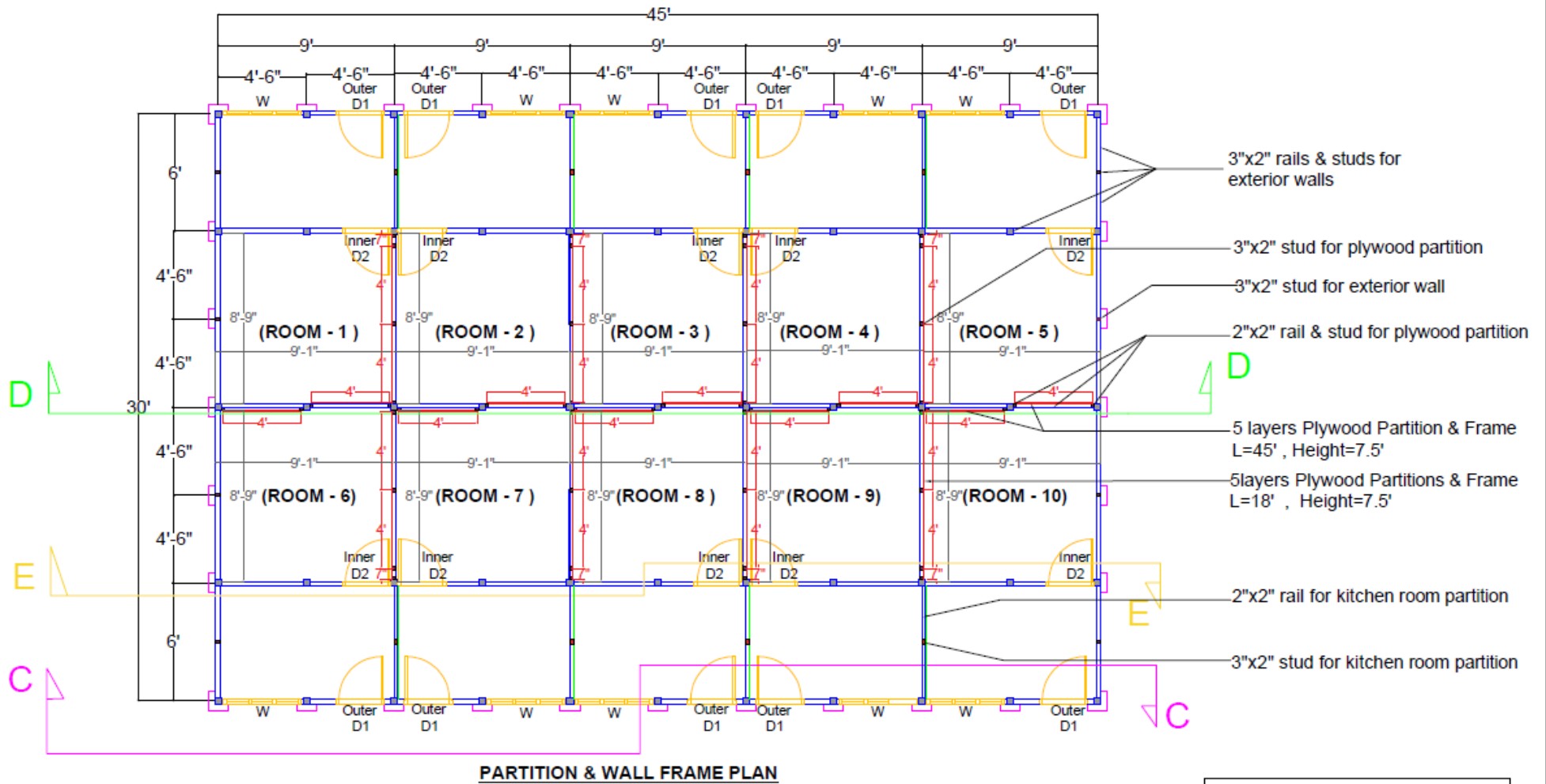
**SHORT LEGGED TEMPORARY 10 UNITS SHELTER (45' X 30' X 7'-6")
FLOORING, CEILING & DOOR INSTALLATION PLAN**



FLOORING, CEILING & DOOR INSTALLATION PLAN	
Project: 10 Units shelter reconstruction (short leg)	
Title: Flooring, Ceiling & Door Installation Plan	
Scale: As Shown	Date: 23, Mar, 2022
Drawing Page No: 03	

SHORT LEGGED TEMPORY 10 UNITS SHELTER (45' X 30' X 7'-6")

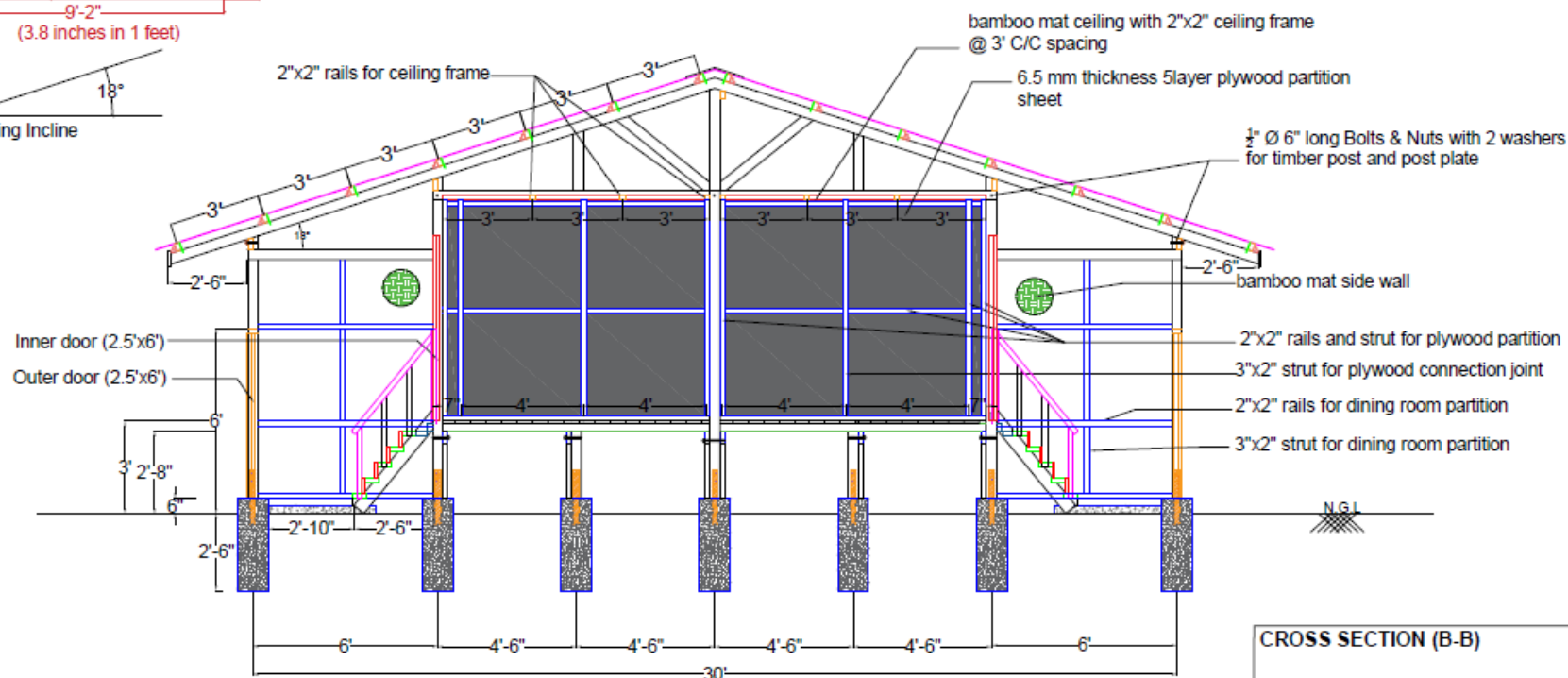
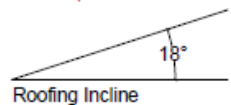
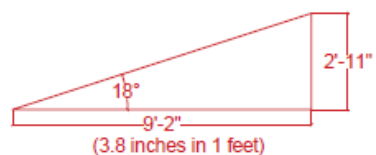
PARTITION & WALL FRAME PLAN



PARTITION & WALL FRAME PLAN

PARTITION & WALL FRAME PLAN	
Project: 10 Units shelter reconstruction(short leg)	
Title: Partition & Wall Frame Plan	
Scale: As Shown	Date: 23, Mar,2022
Drawing Page No: 04	

SHORT LEGGED TEMPORY 10 UNITS SHELTER (45' X 30' X 7'-6")



Bamboo Mat



6.5 mm thickness 5 layer plywood

30' Side of cross section **B-B** shown partition, ceiling frames and doors

CROSS SECTION (B-B)	
Project: 10 Units shelter reconstruction (short leg)	
Title: Cross Section (B-B)	
Scale: As Shown	Date: 23, Mar, 2022
Drawing Page No: 06	

SHORT LEGGED TEMPORY 10 UNITS SHELTER (45' X 30' X 7'-6")
FRONT & BACK VIEW



FRONT & BACK VIEW

FRONT & BACK VIEW	
Project: 10 Units shelter reconstruction(short leg)	
Title: Front & Back View	
Scale: As Shown	Date: 23, Mar,2022
Drawing Page No: 18	