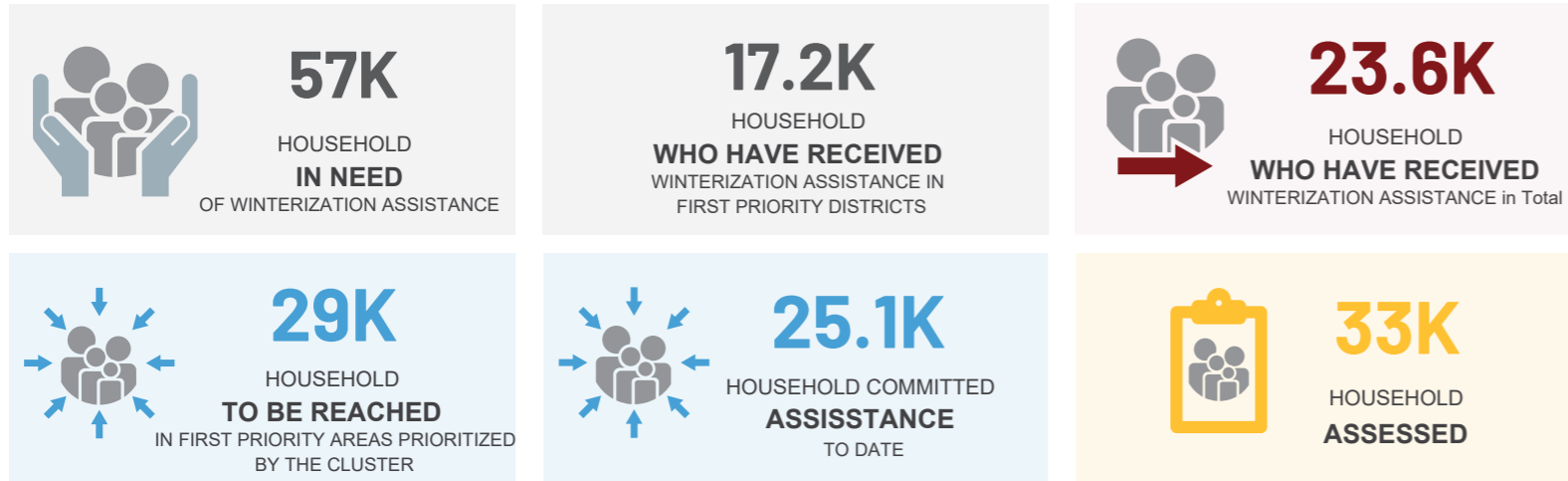
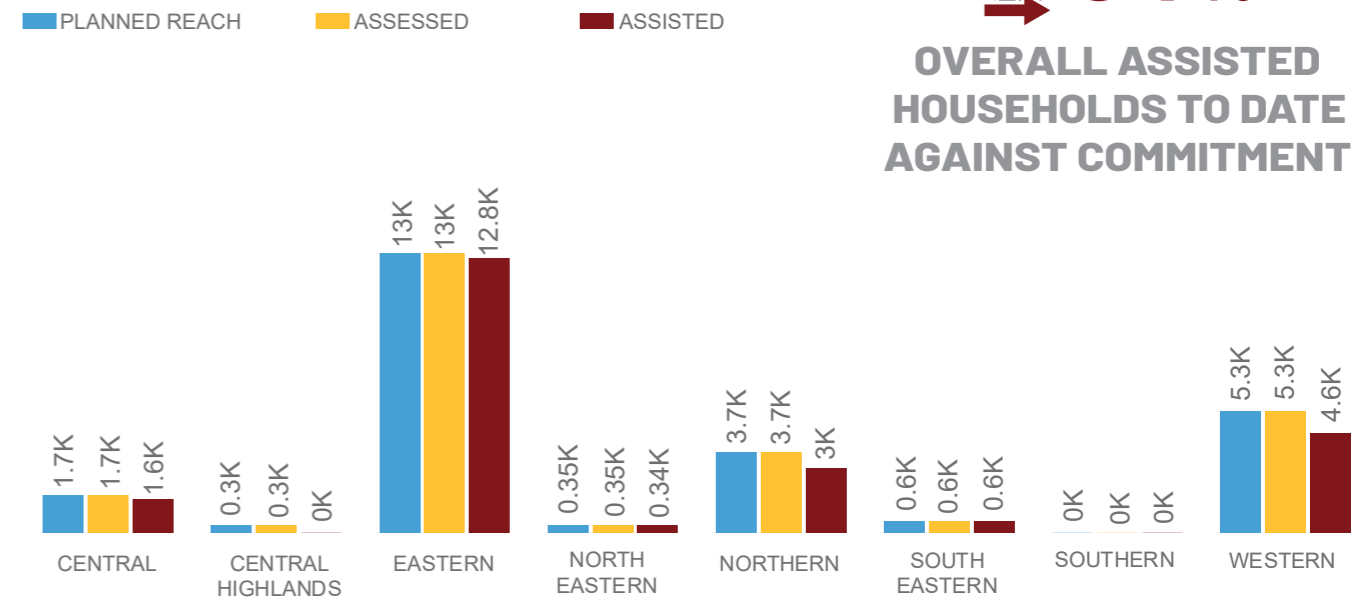


HIGHLIGHTS

The Emergency Shelter and Non-Food Items (ES/NFI) Cluster, in collaboration with the National authorities are providing targeted winterization assistance to IDPs, returnees and acutely vulnerable people across the country in effort to save lives and mitigate vulnerabilities associated with the winter season. Over 45 partners are involved in the winterization response across the country, all prioritizing a range of solutions including provision of fuel and heaters, winter clothing, blankets, shelter repair and rental support.



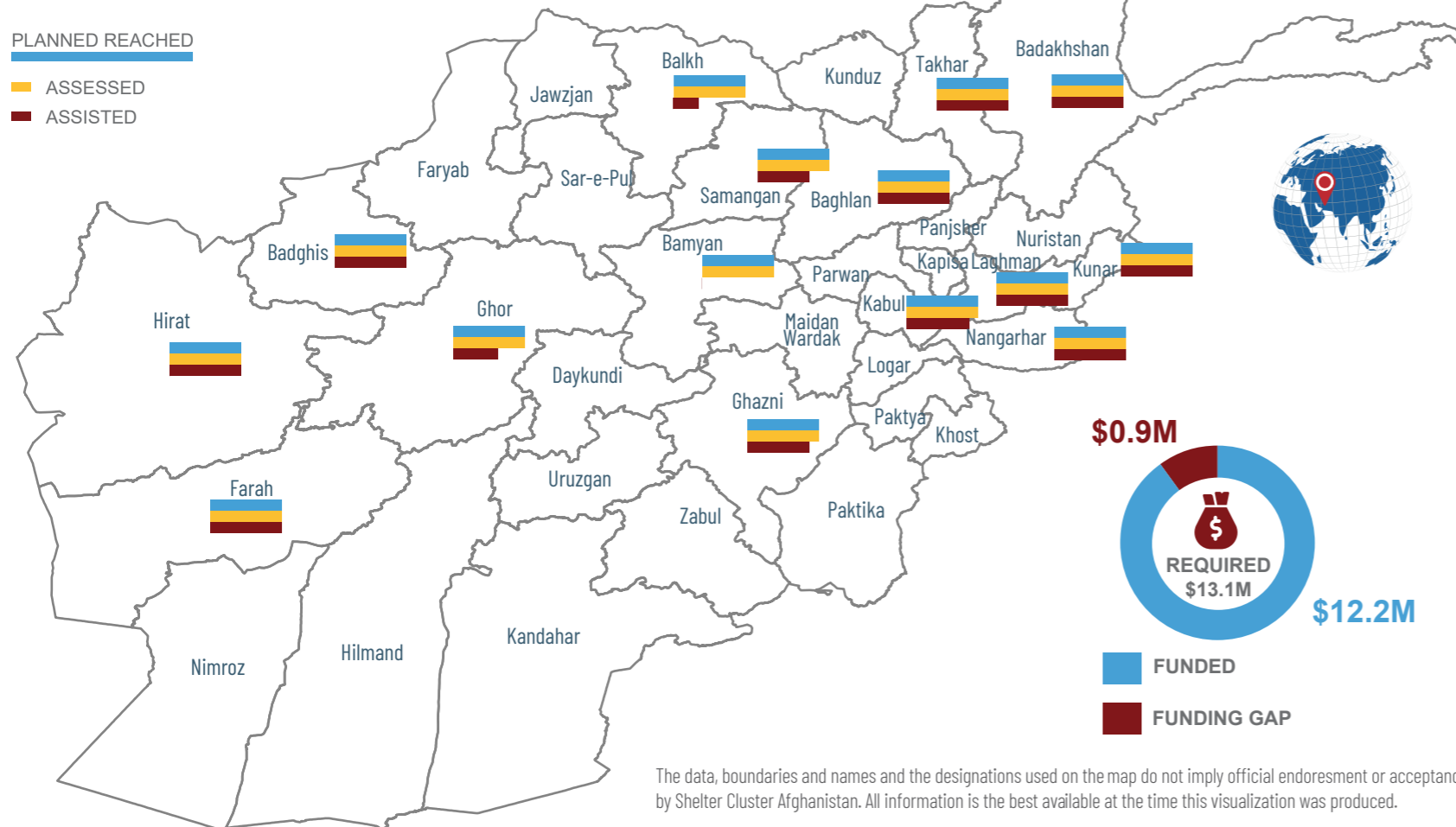
PROGRESS BY REGION (in households)



94%

OVERALL ASSISTED HOUSEHOLDS TO DATE AGAINST COMMITMENT

PROGRESS BY PROVINCE (in households)



ASSISTED HOUSEHOLDS BY ACTIVITY

WINTERIZATION ASSISTANCE	PLANNED REACHED	ASSISTED
STANDARD PACKAGE FOR HEATERS/FUEL	25.1K	23.6K
WINTER CLOTHING PACKAGE	27.7K	26K
BLANKETS & QUILTS PACKAGE	34.2K	32.9K
WINTERIZATION KIT FOR TENTS	0.3K	0.3K
CASH FOR RENT	0K	0K

45 IMPLEMENTING AGENCIES