



## Shelter Cluster Region VIII

SUB – HUB: GUIUAN  
 Eastern Samar and Marabut  
 As of 23/12/2013

### Tent Actors and Numbers

- MSF – 3250 to date in Hernani, Mercedes, Salcedo, Guiuan (including islands)  
 – SOS Attitude Supporting set-up
- UNHCR – 2500 in pipeline
- SC Guidance from central level is to end tent distribution by mid December

### ESK Actors and Numbers

- CRS – 11,000 kits (A-frame with tarpaulins)
- Plan – 14,250 kits (frame with tarpaulins)
- IOM/ACTED – 20,000 toolkits or hammer/nail kits (minimizing tarps if already distributed by ICRC and other actors – 1 tarp max)
- Citizens' Disaster Response Center (CDRC), with support from Peace Winds Japan – blankets, bed sheets, hygiene kits for 6390 HH
- **ESK (distributed+pipeline) considered sufficient; recommendation is to phase out tarp and tent and scale up recovery shelter**

### NFI Actors and Kits

- ICRC – EHI (2 shelter-grade tarpaulins, kitchen set, blankets, mats, buckets, jerry cans, hygiene) – 50,000
- SOS Attitude/MSF – lux kits, generators, lighting, kitchen sets, hygiene sets – islands and selected Barangays identified for high need
- UNHCR – 2 shelter-grade tarpaulins, blankets, jerry cans, coming per request/gap-filling
- IOM – buckets, jerry cans, kitchen sets, per request/gap filling
- UNHCR/IOM – 3000 solar lamps and radios
- ACTED – Hygiene kits integrated with shelter
- Caritas – 6000 tarps and rope kits spread out
- Citizens' Disaster Response Center (CDRC), with support from Peace Winds Japan – blankets, bed sheets, hygiene kits for 6390 HH

## Debris to Shelter Actors

- IOM (began last week with chainsaws in Guiuan, table saws to begin this week)
- ICRC (end January)
- ACTED (cash injections end January)
- Plan (component of ESK – under study)
- Oxfam (cash injections currently in Mercedes)
- CRS?
- Requirements for exploitation of coco-lumber:
  - Permit from PCA (Borongan)
  - Registration of saws with PCA (Borongan)
  - Agreement with LGU (municipalities and barangays) to ensure liaison and agreement with private landowners if applicable

## Recovery Kit Actors

- HFH – 6000 kits in pipeline and distributions for Guiuan City area
- IOM – 30,000 kits planned, 2000 pipeline
- CRS – 2000 kits (still in procurement/plan)
- Plan – 4100 kits (still in procurement/plan)
- MSF – 1500 kits in 6 islands of Guiuan 25m2 (1000 done) + **50 boat repair kits** – Butig, Homonhon, Suluan, Manicani, Victory, Maliwali
- Recovery should be starting now but ESK is still in pipeline for many – need to push for Recovery packages and coordinate with actors and livelihood options (like MSF boat kits)

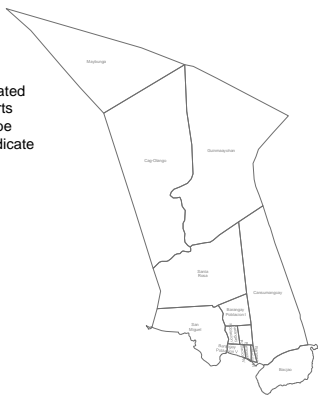
## Shelter Designs

- CRS using A-Frame design for ESK that can be modified and adapted to use with CGI
- IOM will design “open house” using basic kit and coco lumber for roofing frame – for use in DRR/BBB training
- No other designs at this time, actors are requested to submit designs to SC FP/TAC to make sure that we have measure of equality

## Location Based Approach

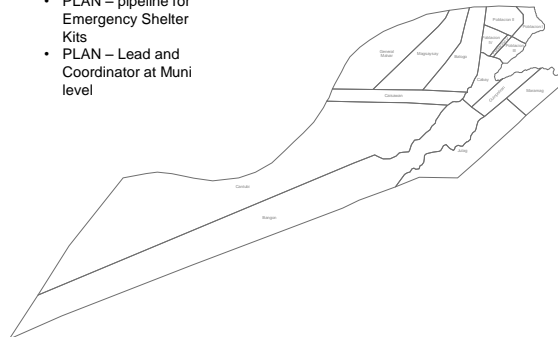
- Some Actors have chosen to set up long-term in Municipalities
- Actors/Partners are requested to liaise as much as possible with other partners if they have indicated that they will be supporting the Municipality and already have a coordination system in place (e.g. CRS, Plan, Oxfam)
- Maps are for keeping notes on actors’ actions and identifying primary leads if they exist

- No designated actor/reports
- Plan may be able to dedicate



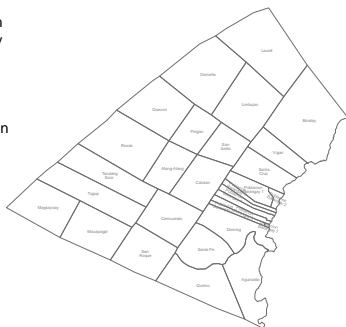
**Balangiga**

- PLAN – pipeline for Emergency Shelter Kits
- PLAN – Lead and Coordinator at Muni level



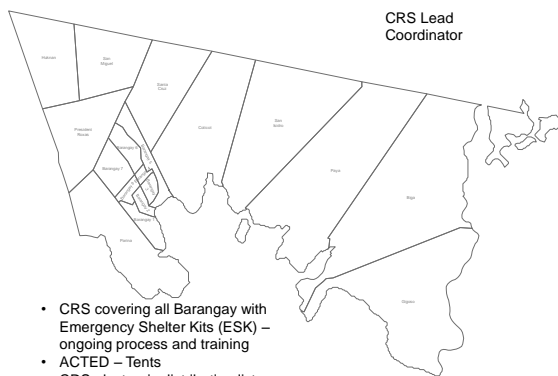
**Balangayan**

- IOM – tools, tarps, NFI to 462 families in B2/B7 (UNHCR identified)
- UNHCR Assessment
- OCHA – assess GIDA in the highlands necessary and in planning
- Citizens' Disaster Response Center (CDRC), with support from Peace Winds Japan – ESK and NFIs for 800 families



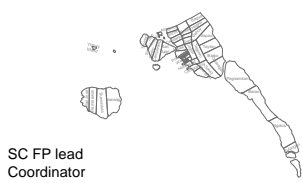
**General Macarthur**

CRS Lead Coordinator



- CRS covering all Barangay with Emergency Shelter Kits (ESK) – ongoing process and training
- ACTED – Tents
- CRS electronic distribution lists – coordinate with them in all actions

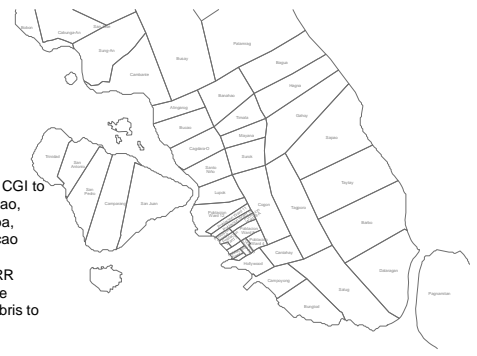
**Giporlos**



SC FP lead Coordinator

- MSF – Island Ops with lux shelter packages
- SOS Attitude – all Bs with tent shelters
- IOM/ACTED – Shelter Kits for 5000
- ICRC – EHI all Bs (ongoing)
- HFH – 6000 recovery kits (ongoing)
- IOM – 7000 recovery kits (DRR safe shelter training ongoing, debris-to-shelter as well)
- IOM distributing ESKs to Tuababao Island
- Plan – setting up plan
- IOM may support MSWD to create electronic lists
- Citizens' Disaster Response Center (CDRC), with support from Peace Winds Japan – ESK and NFIs for 1500 families

**Guiuan**

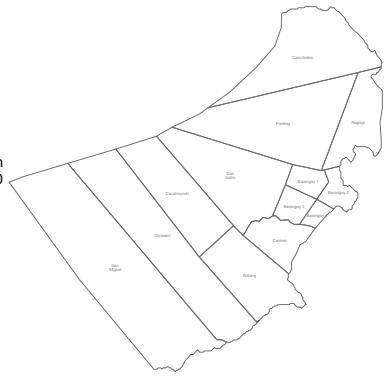


- DSWD to give CGI to Hagna, Banahao, Tagporo, Bagoa, Alingarod, Bucao (Friday)
- IOM began DRR training for safe shelter and debris to shelter

**Guiuan City**

- IOM/ACTED – Batang, Carmen, B2, B4 toolkits
- Plan – tarpaulins (prepos) and ESK (pipelined)
- Relocation Sites (CCCM/SC)
- Citizens' Disaster Response Center (CDRC), with support from Peace Winds Japan – ESK and NFIs for 1750 families
- Rec Plan as Lead for Municipal Coord

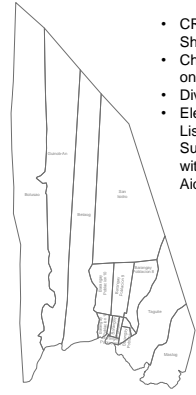
Plan – lead coordinator



**Hernani**

CRS and Christian Aid lead coordinators

- CRS – Emergency Shelter kits ongoing
- Christian Aid – ESK ongoing
- Divided by Mayor
- Electronic Beneficiary Lists through CRS Support – coordinate with CRS and Christian Aid for any distributions



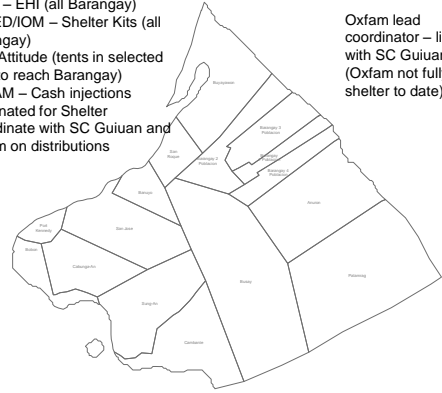
**Lawaan**

- IOM/ACTED/UNHCR distributed ESK last week, including to some isolated indigenous communities
- Citizens' Disaster Response Center (CDRC), with support from Peace Winds Japan – ESK and NFIs for 2040 families



Marabut

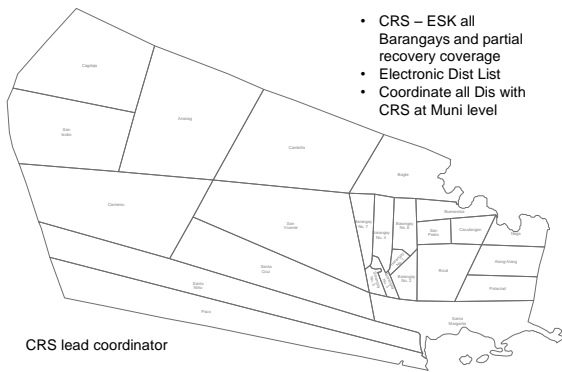
- ICRC – EHI (all Barangay)
- ACTED/IOM – Shelter Kits (all Barangay)
- SOS Attitude (tents in selected hard to reach Barangay)
- OXFAM – Cash injections designated for Shelter
- Coordinate with SC Guiuan and Oxfam on distributions



Oxfam lead coordinator – linked with SC Guiuan (Oxfam not fully in shelter to date)

Mercedes

- CRS – ESK all Barangays and partial recovery coverage
- Electronic Dist List
- Coordinate all Dis with CRS at Muni level



CRS lead coordinator

Quinapondan

- UNHCR (2 tarps, blankets, Jerry can)
- SOS Attitude - Tents
- IOM/ACTED toolkits
- ACTED - Tents
- CRS/IOM Tools/Tarps
- CRS Recovery
- Citizens' Disaster Response Center (CDRC), with support from Peace Winds Japan – ESK and NFIs for 300 families
- Coord with CRS at Muni level for new distributions



CRS lead coordinator

Salcedo

