

## Agenda

1. Updates from HCT Maputo 14.03.2023 + ICCG 21.03.2023
2. Flash Appeal Funds
3. Updates on Freddy + situation in Center/South Region
4. OCHA's Available stocks and pipeline
5. Maps + Assessments
6. AOB

# 1. HRP ADDENDUM

## HRP Addendum at a Glance

TOTAL POPULATION	PEOPLE IN NEED	PEOPLE TARGETED	REQUIREMENTS (US\$)	OPERATIONAL PARTNERS
<b>31.6M</b>	<b>976K</b>	<b>815K</b>	<b>\$99.2M</b>	<b>36</b>

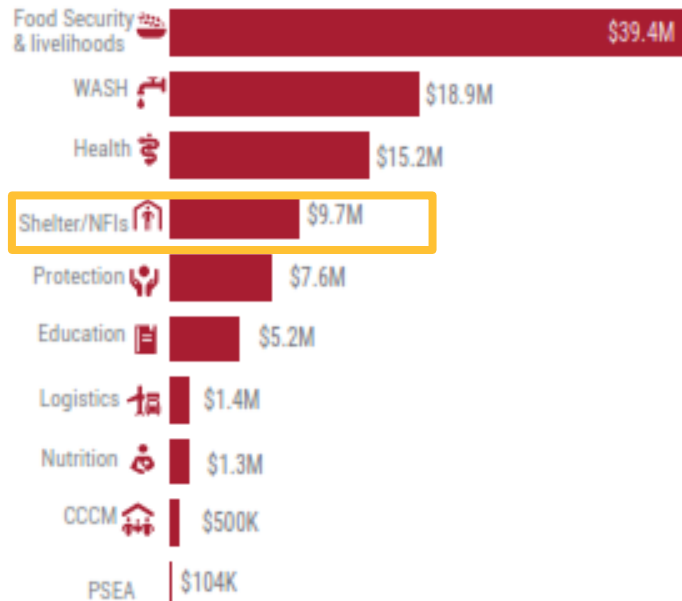
and in households



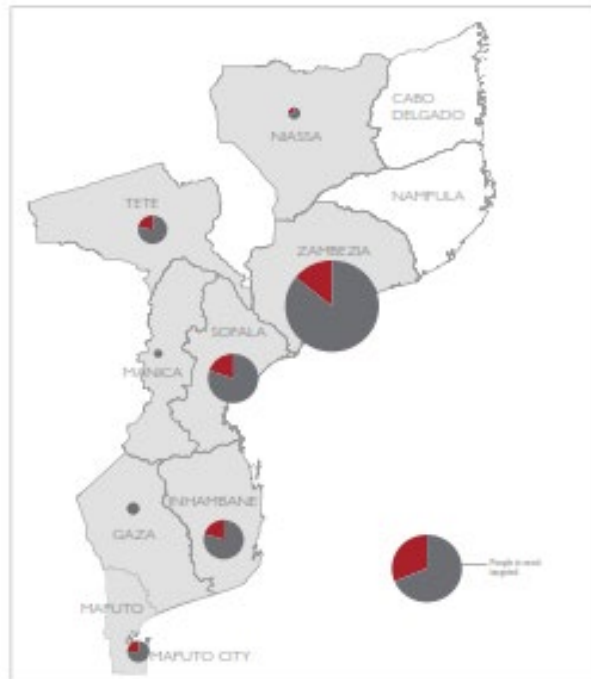
### SHELTER / NFIs

PEOPLE IN NEED	PEOPLE TARGETED	REQUIREMENTS (US\$)
<b>585k</b>	<b>439k</b>	<b>\$9.7M</b>

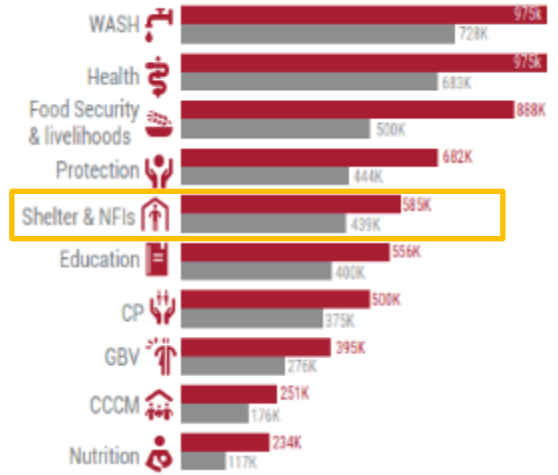
#### Requirements by Cluster



#### People in Need and Targeted



#### People in Need and Targeted by Cluster



ONGOING REVIEW OF THE HRP 2023

HRP: Humanitarian Response Plan

# 1. Updates from HCT Maputo (14.03.2023)

## 1. OCHA: OVERVIEW

Freddy 2 – TC Category 3 (150 km/hr), 200 mm/day  
Macuze, Namacurra (Zambezia)  
Remain until 15/03/2023 as Moderate Tropical Storm. There will be a lot of rain  
Rain upstream Zambezi catchment (Malawi) is a concern  
Concern: Buzi, Zambezia, Pungue, Save bassins

Freddy 1: 239'518 people affected  
Freddy 2: 550'000 people at risk  
Impact in Zambezia (Quelimane): displaced 22'116  
Sofala: displaced 8'572

### Area of Doa very affected

Impact of rain and rain accumulation to be monitored.  
Preliminary figure, to use the official figures from INGD.  
Zambezia: Displaced: 22'116 / Destroyed: 832 / Partially damaged: 1'050

## 2. OCHA: WEATHER UPDATES

Flash Appeal to cover Freddy 1 and 2 - Cover all sectors  
Plan to request 50M USD Appeal  
CERF 10M USD

### MIRA will be conducted in Zambezia as soon as possible

Inhambane: different assessments in the same areas. **Important to harmonize assessments**

## 3. HC INPUTS

Secretary of State in Quelimane: High need of tarps + CGI later: situation very urgent  
Proactive at local level with INGD: need of physical support  
Who's ready to deploy to Quelimane and Inhambane and Tete? Need to go physically in the field

## 4. UPDATES FROM HCT

### ECHO

Assessments just in easily accessible areas: need to visit non accessible areas as soon as possible  
Need of Multisectoral Rapid Need Assessments  
Official figures are not very operational  
Cluster can provide view at least on Freddy 1 operations  
ECHO could support with a helicopter

### WHO

Cholera outbreak: 7 Province and 38 districts (Beira, Chimoio affected)  
During Idai just 2 Provinces

### UNICEF

Need of more realistic figures from INGD  
Thinking to preparing an airbridge (WFP, UNICEF, ECHO could be interested)  
1'000'000 people affected, UNICEF will try to support 500'000 people for 6 months  
Freddy 1-2, Cholera, floods: UNICEF plan 30M USD plan for Freddy 1-2, floods  
Govt: 1'000'000 people affected, 500'000 people targeted

### WFP (FOOD SECURITY + LOGISTIC CLUSTERS) - Antonella

Collect of rainfall data (but no absorption). Use of Copernico satellite (funded by ECHO)  
Sofala, Inhambale, Gaza (over 30'000 people with internal WFP funds)  
Technical assessments needed: cars, drivers, logistics...  
Need in Zambezia, Sofala,....  
In ACs (schools, churches) there is no water.  
Check Quelimane (70% of infra is damaged)  
Over 15 WFP Staff in different places, 10 more will be deployed

### IOM – (SHELTER CLUSTER NORTH + CCCM) – Laura

Need resources: logistics, staff,...  
CCCM Sofala support in ACs + DTM data in ACs  
Zambezia: site planner will be deployed  
NFIs Sofala: waiting green light . Received in-kind from FCDO  
Search support on cholera

### UNDP - Antonio

GREPOC Director: Quelimane is the priority area to go  
Hospital, school, no power, to restore roads....  
1M Euros for emergencies

### ATTENTION to Tete

Tete only 2 UN Agencies  
OCHA: 2 Staff in Inhambane  
Deploying: 2 Staff in Zambezia, Staff in Sofala and Tete

## 1. FUNDS: MAIN ATTENTION IS ON ACs – NOT CLEAR VIEW ON WHAT IS HAPPENING IN NOT ACCESSIBLE AREAS

## 2. NEED OF ASSESSMENTS MIRA format available, to be adapted following needs.

ICCG QUELIMANE: include 2-3 sectors in the Assessments: i.e. Shelter/NFI, WASH, Protection

## 3. IMPORTANT TO WORK WITH LOCAL PARTNERS NETWORK i.e. Red Cross, Caritas,...can mobilize many Volunteers

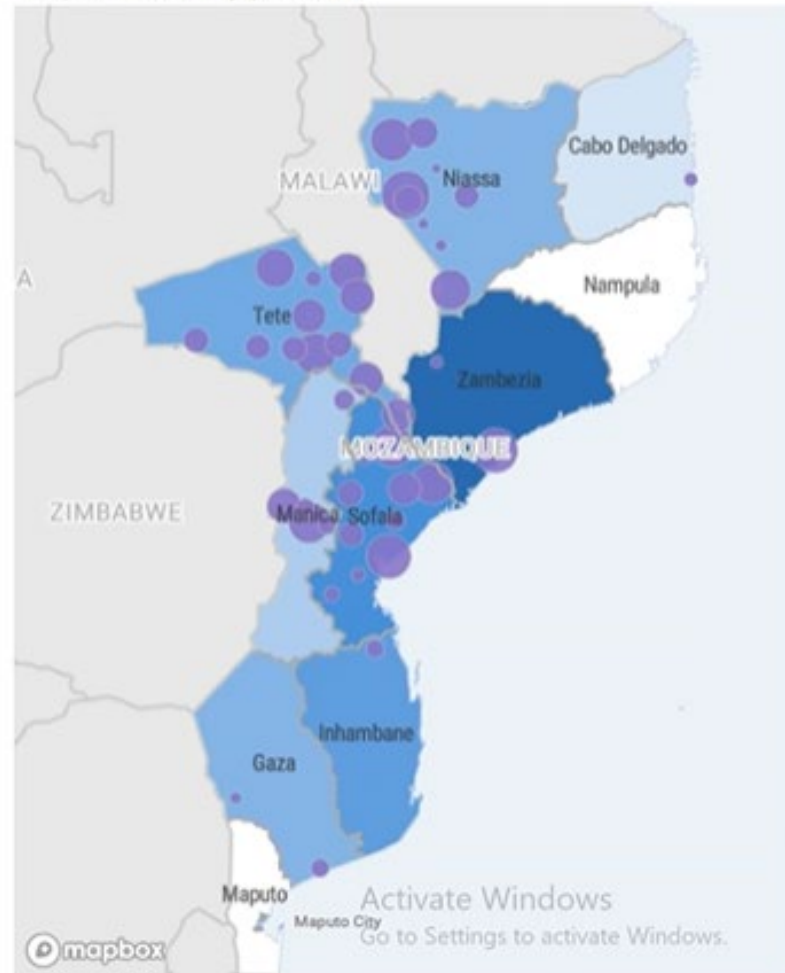
# 1. Updates from ICCG Maputo (21.03.2023)

INFO FROM OCHA - MOZAMBIQUE

## Overview: Overlaying Emergencies

- **Freddy I+II:**  
886,487 people affected (INGD)  
458,042 people affected in Zambezia only
- **Cholera:**  
11,158 cases - 0.7% fatality rate  
8 provinces and 38 districts affected (MISAU)
- **Conflict:**  
2M people in need, 1.6M people targeted

People affected by province



Overlaying Emergencies. Credit: OCHA

# 1. Updates from ICCG Maputo (21.03.2023)

## Impact (Freddy I+II)

INFO FROM OCHA - MOZAMBIQUE

- Total people affected by Freddy I+II: 886,487
- 8 provinces impacted: Zambezia, Sofala, Inhambane, Tete, Maputo City, Niassa, Gaza, and Manica
- Main reported needs: FSL, Shelter/NFIs, WASH, Health, Protection

	People Affected	People in AC	Deaths	Crops (ha)	Houses destroyed	Schools	Health Units	Water Supply System	Roads (km)
Zambezia	458,042	72,607 (110)	143	347,862 (62,820 lost)	103,101	1,017	85	13	5,059
Sofala	171,759	32,451 (46)	15						
Tete	85,139	50,407 (30)	1						
Inhambane	107,614	3,497 (12)	1						
Maputo City	32,230								
Niassa	14,193	4,208 (11)	5						
Gaza	11,341								
Manica	6,169								
<b>Total</b>	<b>886,487</b>	<b>163,456 (213)</b>	<b>165</b>						

Activate Windows  
Go to Settings to activate Windows.

Source: INGD (21/03)

NOT FINAL NUMBERS, BUT WILL NOT CHANGE VERY MUCH

# 1. Updates from ICCG Maputo (21.03.2023)

## INFO FROM OCHA - MOZAMBIQUE

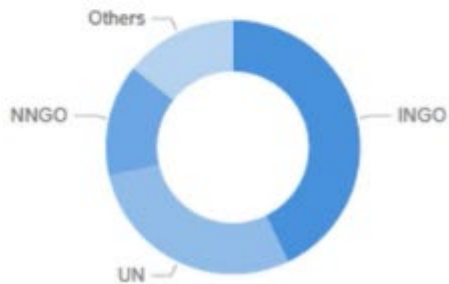
### WHO



### ACTIVITIES BY PARTNERS



### PARTNERS BY TYPE



### WHAT AND WHERE

#### PARTNERS AND ACTIVITY BY CLUSTER

Cluster	# Partners	# Activities
WASH	3	5
Shelter/NFIs	1	1
Education	1	1
Food Security and Livelihood	4	4

#### RESPONSE BY DISTRICT



### WHOM

#### PEOPLE REACHED BY TYPE OF ACTIVITY

Activity	People reached
3 months general food distribution (1 month full ration + 2 months 50% needs with CBT)	675
7 days rations general food distribution in accomodation centres	10,570
72 hours rations general food distribution in accomodation centres	7,190
Distribution of critical WASH supplies	9,159
Emergency NFIs kits (mosquito nets, blankets, mats, jerrycans, family kits, kitchen sets,...)	36
Hygiene promotion	9,584
Learner kits for 185,400 children	622
Provision of emergency water tanks	3,185
Provision of water treatment chemicals	100
seeds & tools - 2nd season cereals & horticultures (36,000 HHs)	5,275
Solid Waste Management	9,684

#### PEOPLE REACHED BY PROVINCE / DISTRICT

Province / District	WASH	Shelter/NFIs	Education	Food Security and Livelihood
<b>Inhambane</b>				
Govuro	3645			517
Inhassoro		36		
Mabote				675
Massinga	480	622		5275
Morumbene				300
Vilankulo				375
<b>Zambezia</b>				
Cidade De Quelimane	9684			10570

# 1. Updates from ICCG Maputo (21.03.2023)

INFO FROM OCHA - MOZAMBIQUE

## Advocacy and Resource Mobilization

### CERF RR Allocation:

- Thematic focus:  
Cholera, Freddy I + II
- Geographic focus:  
Inhambane, Manica, Tete,  
Gaza, Sofala, Zambezia
- Participating sectors:  
FSL, Health (incl. SRH),  
WASH, Shelter/NFIs
- Funds allocated by CERF:  
US\$ 10M
- Participating agencies:  
WFP, FAO, WHO, UNFPA, UNICEF, IOM

Sector(s)	Revised Envelopes (in USD)	Participating UN agency
Health (uncluding SRH)	1,245,000	WHO
	455,000	UNICEF
	300,000	UNFPA
WASH	4,700,000	UNICEF
Food Security and Livelihood	1,200,000	WFP
	800,000	FAO
Shelter/NFIs	1,300,000	IOM
<b>TOTAL</b>	<b>10,000,000</b>	

Activate Windows  
Go to Settings to activate Windows.

# 1. Updates from ICCG Maputo (21.03.2023)

INFO FROM OCHA - MOZAMBIQUE

## Communication and Reporting

- OCHA will produce three main communication products on a **weekly basis**:

- **Flash Update**  
Providing an overview of the situation  
(Strategic/high-level advocacy)
- **Digital SitRep**  
Providing situational and operational details  
on response, needs and gaps  
(Operational coordination and advocacy)
- **Response Dashboard (based on 5W tool):**  
Reports response against Addendum to 2023 HRP  
(Operational coordination and advocacy)

Info providers	Product	Input Deadline	Send inputs to	Publication Day
Cluster Coordinators	Flash Update	Monday, 17:00hrs	Federica (dandreagiovannif@un.org)	Tuesday or when updated info are available
	Digital Sitrep	Wednesday, 17:00hrs	Online link (TBC)	Thursday
Cluster IMOs	5W	Thursday, 17:00hrs	Iga (denismarko@un.org)	Friday

- Regular inputs from cluster coordinators and IMOs are required (see table).
- These products will be published on [reliefweb](#) and circulated among HCT Plus members by email

REQUESTED WEEKLY INFO FROM OCHA

**5W IS THE KEY DOCUMENT FOR PARTNERS.** AN ADAPTED VERSION TO SHELTER CLUSTER PARTNERS WILL BE SHARED:

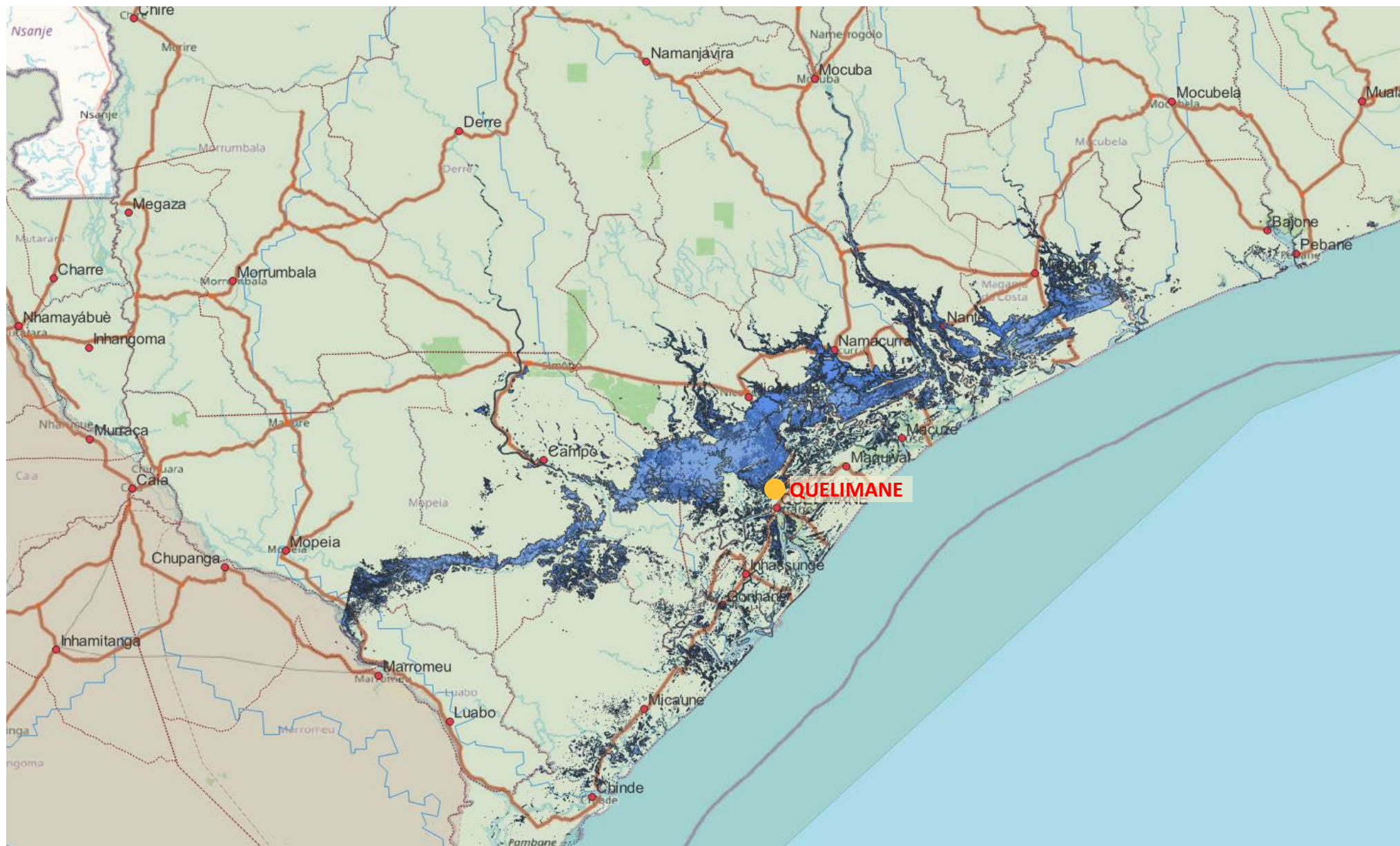
ADDED 2 COLUMNS FOR GEO COORDINATES

## 2. Flash Appeal : PiN and SC Target population

DATA: OCHA FLASH APPEAL - 21/03/2023					
Province	TOTAL PEOPLE AFFECTED	TOTAL HHs		Shelter/NFIs PIN	Shelter/NFIs Target
TOTAL	975,016	205,824		390,006	234,004
GAZA	10,539	2,108	1.1%	4,216	2,529
INHAMBANE	107,614	21,523	11.0%	43,046	25,827
MANICA	4,882	976	0.5%	1,953	1,172
MAPUTO CIDADE	32,230	6,446	3.3%	12,892	7,735
NIASSA	9,708	3,798	1.0%	3,883	2,330
SOFALA	169,159	33,832	17.3%	67,664	40,598
TETE	56,887	20,342	5.8%	22,755	13,653
ZAMBEZIA	583,997	116,799	59.9%	233,599	140,159

ACCORDING TO OFFICIAL DATA, 84% OF THE PEOPLE AFFECTED IS IN ZAMBEZIA, SOFALA E INHAMBANE

# 5. Maps: Quelimane 17/03/2023



# 2. Flash Appeal Funds

## FLASH APPEAL: REQUESTED FUNDS ACCORDING TO THE ACTUAL ESTIMATED NEEDS (21/03/2023)

SHELTER CLUSTER - BUDGET / PROVINCE		
<b>TOTAL</b>	<b>9,675,000</b>	
GAZA	104,578	1%
INHAMBANE	1,067,844	11%
MANICA	48,444	1%
MAPUTO CIDADE	319,816	3%
NIASSA	96,332	1%
SOFALA	1,678,550	17%
TETE	564,485	6%
ZAMBEZIA	5,794,952	60%

**SHELTER CLUSTER TARGET: 234'000 People**

**AVERAGE BUDGET / BENEF: 41 USD / Benef**

**AVERAGE BUDGET / HH: 205 USD/ HH**

FLASH APPEAL Priority Sectoral Activities (based on ERP)	Total Budget USD	
<b>TOTAL</b>	<b>81,671,022</b>	
<b>FSL</b>	<b>29,501,191</b>	<b>36.1%</b>
<b>WASH</b> Target: 500,000 people (100,000 families)	<b>18,866,667</b>	<b>23.1%</b>
<b>Health</b>	<b>7,876,272</b>	<b>9.6%</b>
<b>Shelter/NFIs</b>	<b>9,675,000</b>	<b>11.8%</b>
<b>Shelter</b>	<b>7,075,000</b>	<b>8.7%</b>
Shelter Emergency (basic + standard + upgrade), including toolkits - Target:	4,400,000	
Shelter Resilient/Transitional + Repair kits - Target 5'000 HHs	1,875,000	
Tents - Target 2'000 HHs	800,000	
<b>NFI HHs</b> Emergency kits (mosquito nets, blankets, mats, jerrycans, family kits, kitchen sets,...) for 40'000 HHs	<b>2,200,000</b>	<b>2.7%</b>
<b>Coordination + IEC + Other activities</b>	<b>400,000</b>	<b>0.5%</b>
Activate Local DRR Committees	100,000	
IEC material on Shelter/NFIs Key Preparedness and good practices messaging (shelter/houses reinforcement advice and promotion Build Back Better principles).	100,000	
Distribution and Technical assistance for construction (Teams + Logistics)	100,000	
Cluster coordination (field travels, surge deployments, logistics) - lumpsum	100,000	
<b>Protection (incl. GBV and CP)</b>	<b>7,621,175</b>	<b>9.3%</b>
<b>Nutrition</b>	<b>1,200,000</b>	<b>1.5%</b>
<b>Education</b>	<b>5,241,000</b>	<b>6.4%</b>
<b>Logistics</b>	<b>1,104,718</b>	<b>1.4%</b>
<b>PSEA</b>	<b>85,000</b>	<b>0.1%</b>
<b>CCCM</b>	<b>500,000</b>	<b>0.6%</b>

# 3. Updates on Freddy + situation in Center/South Region

COE SOFALA – 20.03.2023

## Ponto de Situacao da Passagem do Ciclone Tropical Freddy: (Periodo 11 a 20 de Marco de 2023) - Dados preliminares

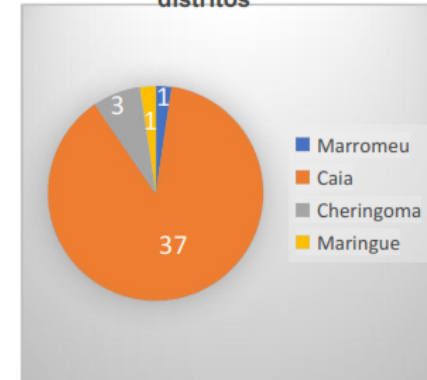


A presente apresentacao faz mensao aos impactos causados pelo Ciclone Tropical FREDDY entre os periodos 11 a 19 de Fereveiro corrente ano. Este ciclone teve como Epicentro a Provincia de Zambezia, tendo afectado tambem a Provincia de Sofala, com maior incidencia aos distritos localizados na regio norte da Provincia.

### Accoes realizadas ou em curso



### Distribuciao dos Abrigos pelos distritos



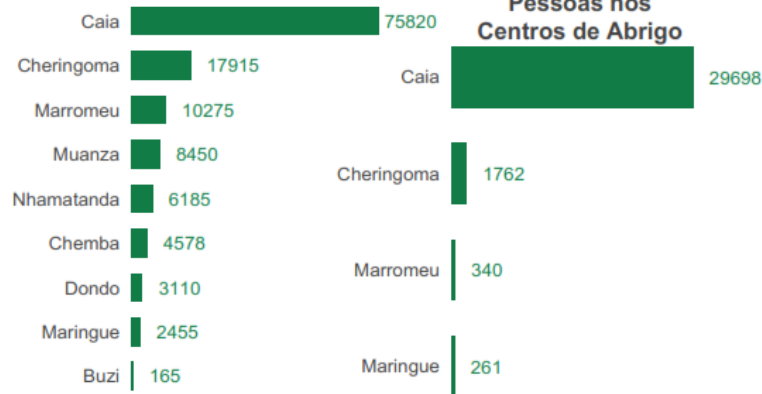
### Populacao Afectada



### Principais Danos



### Distritos Afectados



1. Monitoria e avaliacao de danos;
2. Assistencia humanitaria aos afectados nos CAs;
3. Accoes de sensibilizacao da Populacao;
4. Desactivacao dos Centros de Acomodacao;
5. Mobilizacao dos recursos.

Continuar data: 19.03.2023

Email: coe\_sofala@gmail.com

# 3. Updates on Freddy + situation in Center/South Region

COE TETE – 21.03.2023



## Ponto de Situação do Ciclone Freddy-(11 a 20 de Março)-TETE



A presente apresentação faz referencia a passagem do ciclone Freddy, no período de 11 a 20 de Março, que registou Chuvas acompanhadas de ventos fortes, nos Distritos de Doa, Moatize e Mutarara.

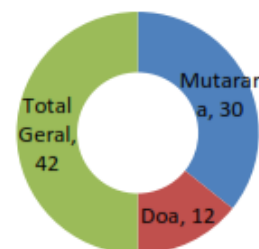


### ACÇÕES REALIZADAS

 **42** Centros de Abrigos temporários Criados  
 **75** CLGRD Activados e resgatadas 190 Famílias

### POPULAÇÃO AFECTADA

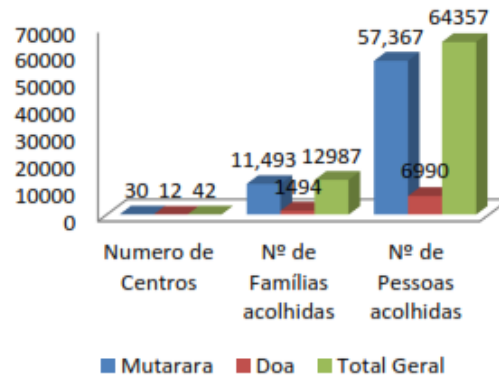
 **20324** Famílias  
 **101407** Pessoas  
 **01** Óbitos  
 **04** Feridos  
 **02** Desaparecidos



### PRINCÍPAIS DANOS

 **3851** Totalmente  
 **5161** Parcialmente  
 **7537** Inundadas  
 **8** Escolas afectadas  
 **15** Salas de Aulas  
 **2511** Alunos afectados  
 **12445** ha Perdidos  
 **02** Pontes destruidas  
 **S/I** Casa de culto

### Abrigos e Pessoas no CA's



### ACÇÕES EM CURSO

- Monitoria e avaliação de danos e necessidades.
- Assistência Humanitaria nos centros de acomodação;
- Desativação dos centros de Acomodação

Data: 15/03/2023

Feedback: [ingdilegacadetete@gmail.com](mailto:ingdilegacadetete@gmail.com) - [www.website.org](http://www.website.org)

# 3. Updates on Freddy + situation in Center/South Region

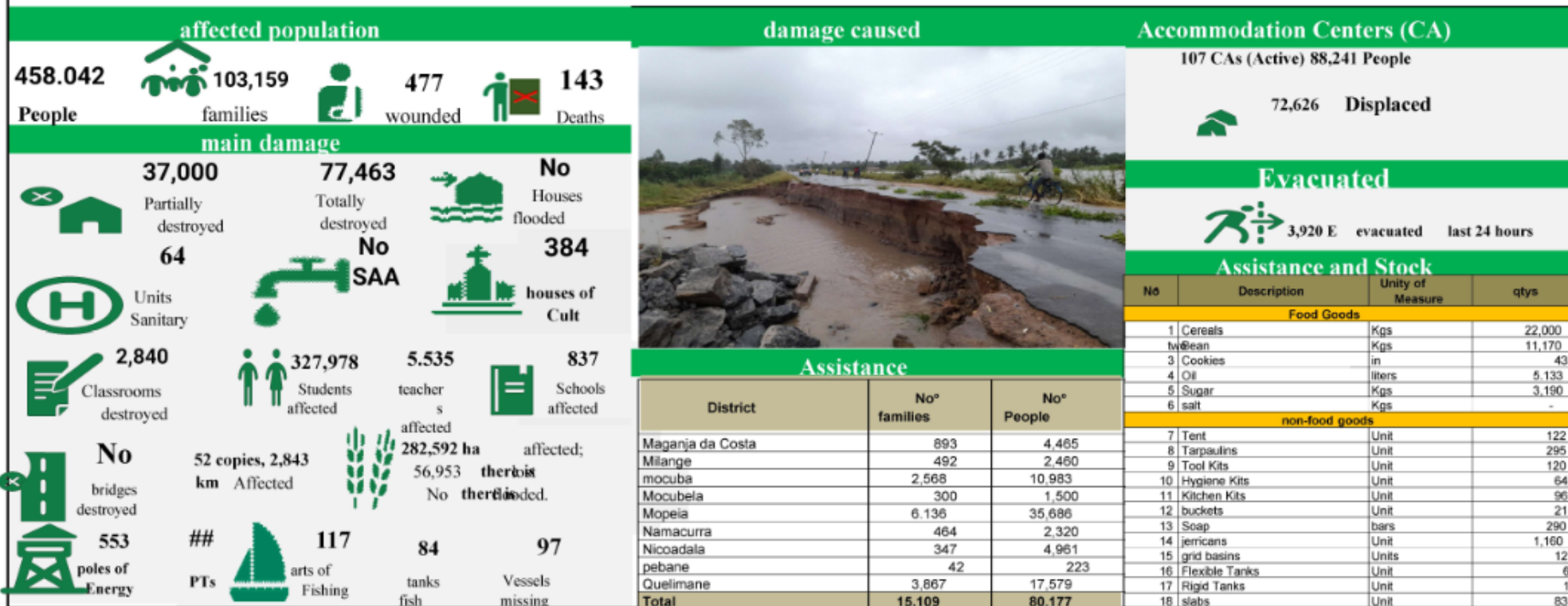
COE ZAMBEZIA – 19.03.2023

## CUMULATIVE SUMMARY

Status: Tropical Cyclone FREDDY until 12:00 on March 19, 2023 \_ Preliminary data



Tropical Cyclone FREDDY that entered the Mozambican coast on March 11 through the province from Zambezia at Posto Macuze administrative district, Namacurra district with winds of 148km/h and gusts up to 213km/h with heavy rains, caused the following impacts in the districts of Zambezia province:



Data Source: INGD\_COE-Z coezambezia@gmail.com

# 4. OCHA's Available stocks and pipeline

Based on OCHA- Stock Monitoring Template Update: 24/03/2023			HH ASSISTANCE CAPACITY CENTER / SOUTH	PROVINCE - CENTER/SOUTH							
ITEMS CATEGORY	ITEMS	COMMENTS		TOTAL STOCK CENTER / SOUTH	GAZA	INHAMBANE	MANICA	MAPUTO	SOFALA	TETE	ZAMBEZIA
NFI	Bag	1 pcs/HH	-	-							
	Blankets	2 pcs/HH	2,638	5,276	2,600			2,360	236		80
	Buckets	1 pcs/HH	-	-							
	Capulana	2 pcs/HH	7,036	14,072	40			5,134	8,898		
	Clothes bag	1 pcs/HH	-	-							
	Family kits / Survival kits/Hygiene kits	1 pcs/HH	1,815	1,815		108		357	720		630
	Jerrycan, semi-collapsible, 10 lts	1 pcs/HH	-	-							
	Kitchen Sets	1 pcs/HH	2,447	2,447	1,181	31	9	676	550		
	Mosquito Nets	2 pcs/HH	5,345	10,690	4,000		2,000		3,060		1,630
	NFI bag	1 pcs/HH	-	-							
	Sleeping Mats	2 pcs/HH	1,260	2,519	1,116			1,034	369		
	Solar Lamp	1 pcs/HH	2,332	2,332		1,684			648		
SHELTER	CGI Sheets 0.4 m - length?	12 pcs/HH	-	-							-
	Nails 2-3" (kg)	2 kgs/HH	-	-							-
	Nails, Roofing (kg)	3 kgs/HH	-	-							-
	Rope Rolls - 30 m/HH	30 mts/HH	229	4,570					4,570		-
	Rope, Rubber - bundle 100 strip	10 pcs/HH	-	-							-
	Plastic sheet (4mX60m) roll	2 pcs 4 x 6 m / HH	30,000	6,000							6,000
	Plastic sheet - roll 1 x 100 m	To confirm use 10 m/HH	-	-							-
	Tarpaulin (4m X6m) pcs	1 or 2 pcs / HH	14,408	28,816	944	9,246	123	2,560	5,915	28	10,000
	Tents, Family	1 tent/HH	110	110	71		3		11		25
	Shelter Fixing Toolkits - IOM	Rope 30m , Roofing nails 0.5 kg, Nails 4" 0.5 kg Nails small 2.5" kg, Tie wire 100 mts, Shear 1, Claw hammer 1	5,073	5,073					2,073		3,000
	Shelter kit - IFRC	Tarpaulin 2 pcs + Shelter Toolkit 1	-	-							
	Shelter tool kit - IFRC	Rope 30 mts, Roofing Nails 0.5 kg, Nails 4" 0.5 kg, Tie wire 5 mts, Hand Saw 1, Shovel 1, Hoe 1, Machete 1, Tin snips 1, Claw hammer 1, Woven bag 1	4,464	4,464	999	1,000	20		817	998	630
Shelter Survival kits - CARE	Tarpaulin (4x6) 1, Kitchen set 1, Solar lamp 1, Blanket 1, Mosquito net 1, Bag woven 1, IEC pamphlet 1	1,170	1,170				1,170			-	

**THE TABLE IS INTENDED TO GIVE AN IDEA OF THE AVAILABLE KITS AND ITEMS....PLEASE HIGHLIGHT DISCREPANCIES SO WILL BE CORRECTED  
THE OBJECTIVE IS TO ARRIVE TO HAVE A CLEARER VIEW ON AVAILABLE ITEMS AND TO REACH HARMONIZED STANDARDS**

# 4. OCHA's Available stocks and pipeline

OCHA Stock Monitoring (Google Spreadsheet):

<https://docs.google.com/spreadsheets/d/1WxLe00psGo3pgFEwaUHhXnsetrQTNx3s/edit#gid=589279800>

## PLEASE NOTICE THAT SEVERAL SC PARTNERS HAVE DIFFERENT TYPES OF SHELTER KITS

Shelter Fixing Toolkits - IOM	Rope 30m Roofing nails 0.5 kg Nails large 0.5 kg Nails small 0.5 kg Tie wire 100 mts Shear Claw hammer
Shelter kit - IFRC	Tarpaulin 2 pcs Rope 30 mts Roofing Nails 0.5 kg Nails long 0.5 kg Tie wire 5 mts Hand Saw 1 Shovel 1 Hoe 1 Machete 1 Tin snips 1 Claw hammer 1 Woven bag 1
Shelter tool kit - IFRC	Rope 30 mts Roofing Nails 0.5 kg Nails long 0.5 kg Tie wire 5 mts Hand Saw 1 Shovel 1 Hoe 1 Machete 1 Tin snips 1 Claw hammer 1 Woven bag 1
Shelter Survival kits - CARE	Tarpaulin (4x6) 1 Kitchen set 1 Solar light 1 Blanket 1 Mosquito net 1 Woven bag 1 IEC pamphlet 1m

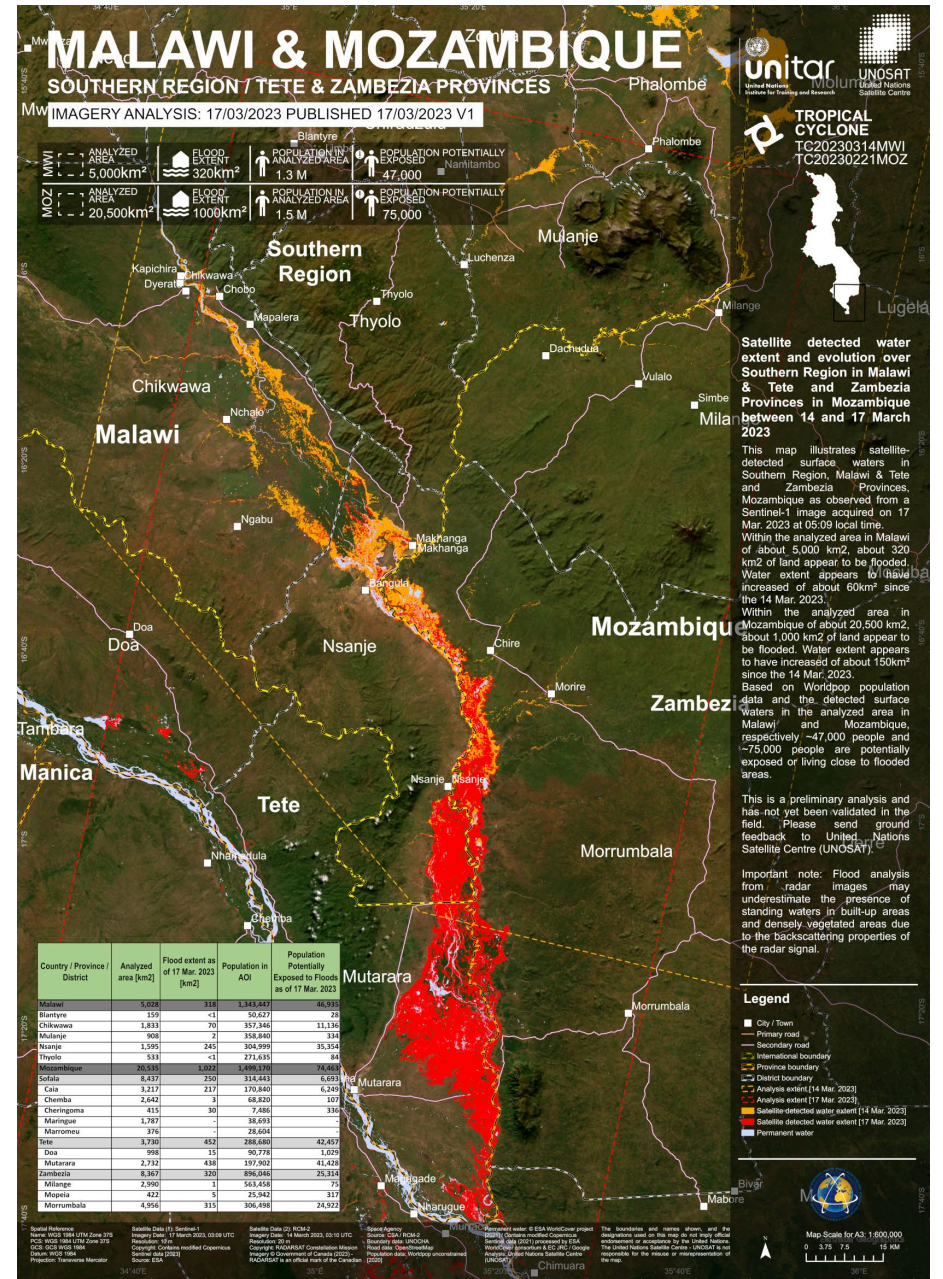
## IFRC STANDARD TOOL KIT COMPOSITION

SPECIFICATIONS	Quantity per Kit	Units	Indicative Picture
<b>TARPAULINS</b> , woven plastic. Width 4 m Length Sheet of 6 m. Weight 170g/m2 +/- 5%, plus 10% for the reinforcement bands under ISO 3801. <b>HSHETARPW406</b> (packed separately from Tools below)	2	pc	
<b>ROPE</b> , polyester, diameter: 12 mm, 30m, in roll, Preferred colour: Black / Dark Green	1	roll	
<b>HAND SAW</b> , total length 750mm, for wood, Good Quality, tempered, hardened and set teeth. Unbreakable handle. Blade covered by protective cardboard (*Item code: ETOOSAWSW400 but length 750mm)	1	pc	
<b>ROOFING NAILS</b> , Capped, with attached rubber washer 75mmx3mm (3"), twisted and galvanised preferred, to be supplied in sealed bag.	0.5	kg	
<b>SHOVEL</b> , head only is hot forged carbon steel, hardened and tempered, HRC 35min to 48 max. Supply with handle. With pointed head. Total length 100 to 110 cms	1	pc	
<b>HOE</b> , head only is 230 x 175 mm, 1.360g in forged steel. Supply with varnished hard wood handle length approx. 110-120cm, supply blade covered by cardboard (*Item code: RAGRTOOLHOE1)	1	pc	
<b>MACHETE</b> , wooden handle. Blade sharpened for intended use Supply blade covered by cardboard (*Item Code: RAGRTOOLMAC1)	1	pc	
<b>TIN SNIPS</b> , for cutting tin roofing sheets, safety latch, Good Quality (*Item code: ETOOCUTTSHE1)	1	pc	
<b>NAILS</b> , 0.5 kg Steel, 3 inches long (75 x 3mm), to be supplied in sealed bag.	0.5	kg	
<b>TIE WIRE</b> , Diameter 2mm, 5m long in roll (*Item code: EHDWWIRETR11)	1	roll	
<b>CLAW HAMMER</b> , Weight: 0.750 kg/pc. Replaceable Wooden handle. Forged head, not cast. Good Quality	1	pc	
<b>WOVEN SACK</b> , of synthetic material containing above items as kit, colour: white or gray, closed with string or wire. With IFRC Logo in red	1	pc	
<b>For Tools - Double Walled Carton box - with IFRC logo</b>	<b>2 x Shelter Kits</b> individually packed in New Woven PP Bag with IFRC logo to be packed further in carton for easy handling, storage and distribution		

# 5. Maps: Sofala – Tete - Zambezia 17/03/2023

MAPS AVAILABLE AT:

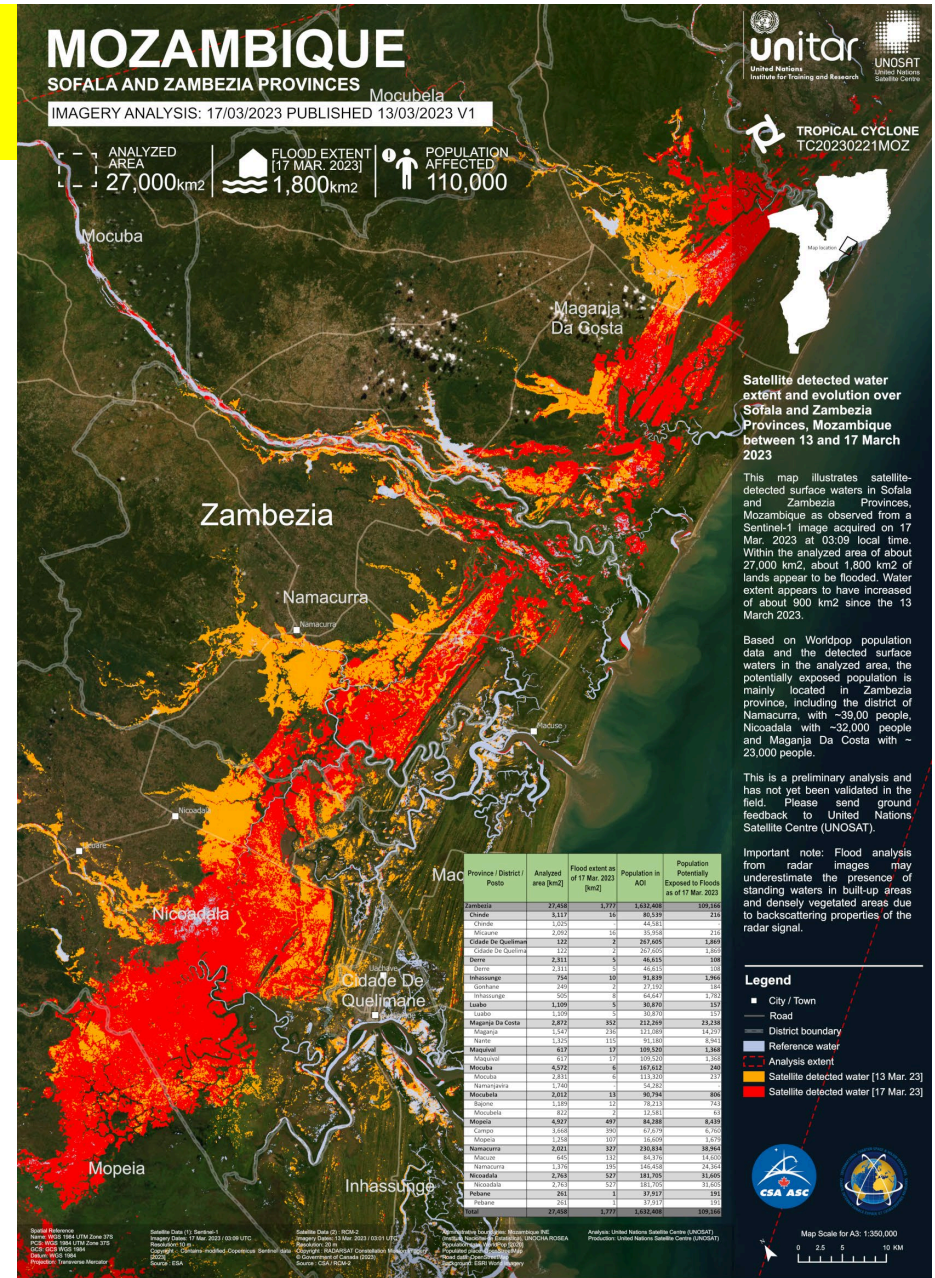
<https://unosat.org/products/3536>



# 5. Maps: Sofala – Sofala - Zambezia 17/03/2023

MAPS AVAILABLE AT:

<https://unosat.org/products/3536>



Satellite detected water extent and evolution over Sofala and Zambezia Provinces, Mozambique between 13 and 17 March 2023

This map illustrates satellite-detected surface waters in Sofala and Zambezia Provinces, Mozambique as observed from a Sentinel-1 image acquired on 17 Mar. 2023 at 03:09 local time. Within the analyzed area of about 27,000 km<sup>2</sup>, about 1,800 km<sup>2</sup> of lands appear to be flooded. Water extent appears to have increased of about 900 km<sup>2</sup> since the 13 March 2023.

Based on Worldpop population data and the detected surface waters in the analyzed area, the potentially exposed population is mainly located in Zambezia province, including the district of Namacurra with ~39,000 people, Nicoadala with ~32,000 people and Maganja Da Costa with ~23,000 people.

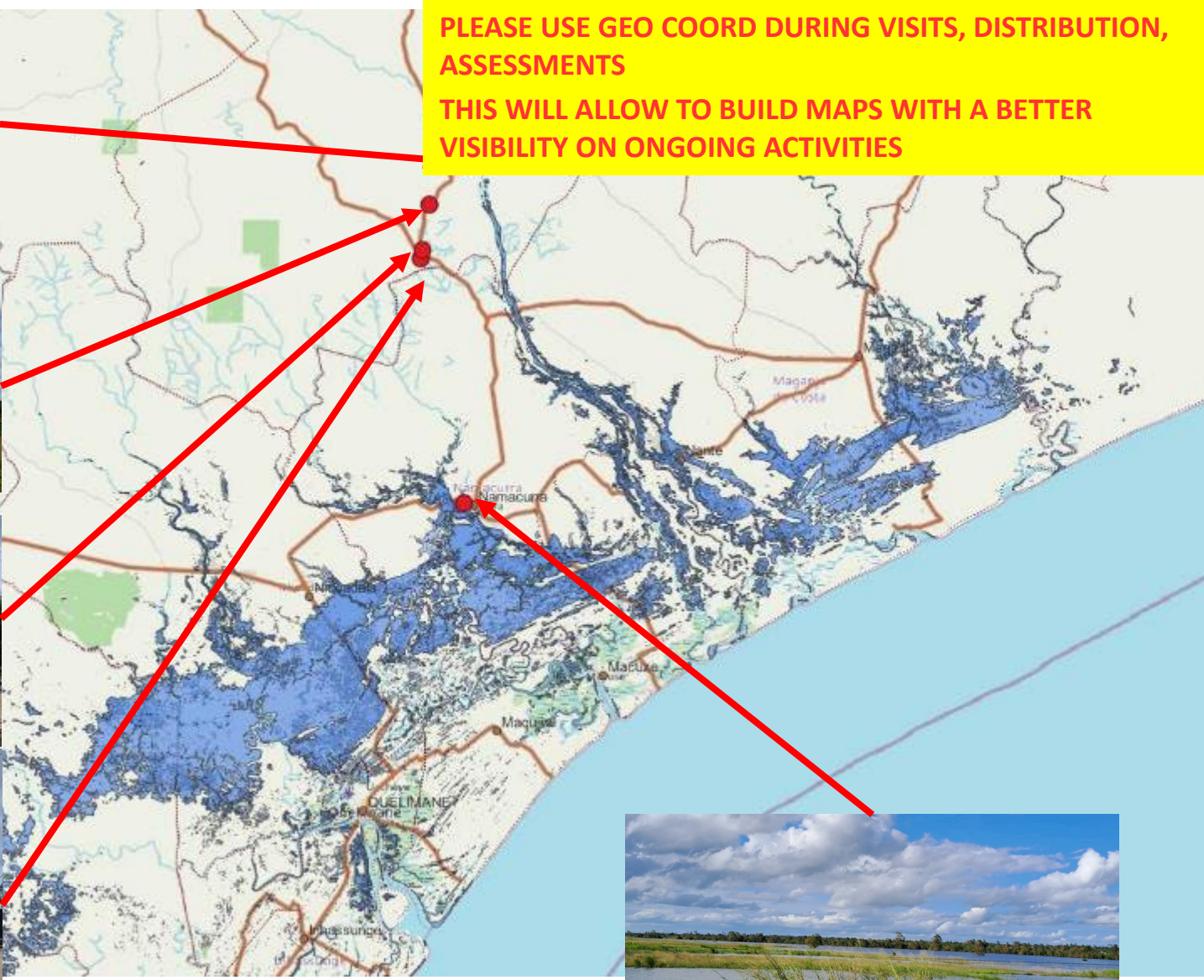
This is a preliminary analysis and has not yet been validated in the field. Please send ground feedback to United Nations Satellite Centre (UNOSAT).

Important note: Flood analysis from radar images may underestimate the presence of standing waters in built-up areas and densely vegetated areas due to backscattering properties of the radar signal.



# 5. Maps: Mocube visit - Zambezia 17/03/2023

**PLEASE USE GEO COORD DURING VISITS, DISTRIBUTION, ASSESSMENTS**  
**THIS WILL ALLOW TO BUILD MAPS WITH A BETTER VISIBILITY ON ONGOING ACTIVITIES**



## 5. Ongoing in the field



**WIND + HEAVY RAIN**



**WIND + HEAVY RAIN**



**RECONSTRUCTION ONGOING**