



Shelter, Land and Site Coordination Sector Sri Lanka



Join the WhatsApp group of the
SLSC Sector, Sri Lanka for live
communications and updates

NATIONAL SHELTER, LAND & SITE COORDINATION SECTOR

Meeting Indian High Commission (IHC)

April 1st 2026

THE CURRENT MOMENT



Large-scale housing damage
+ unsafe returns > ongoing
displacements



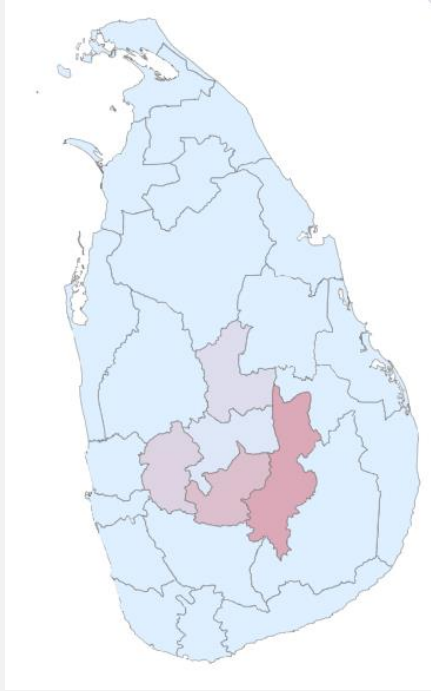
Fragmented recovery >
inefficient investments



Climate risks exacerbated
(floods, landslides, coastal
erosion) > repeated losses
without CC adaptation

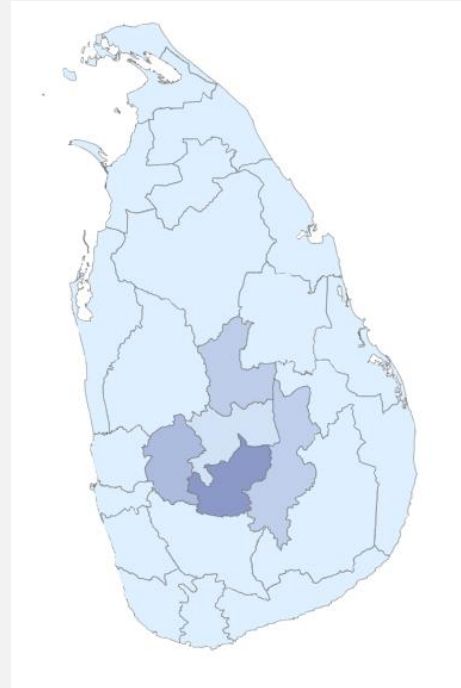


Land and tenure constraints
> delay in land identification
and relocation planning



Total affected
IDPs

220,044

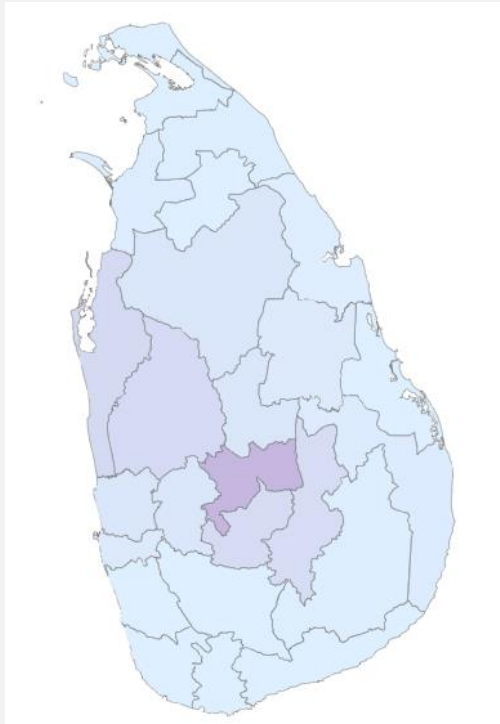


IDPs with the Host
Community

149,927

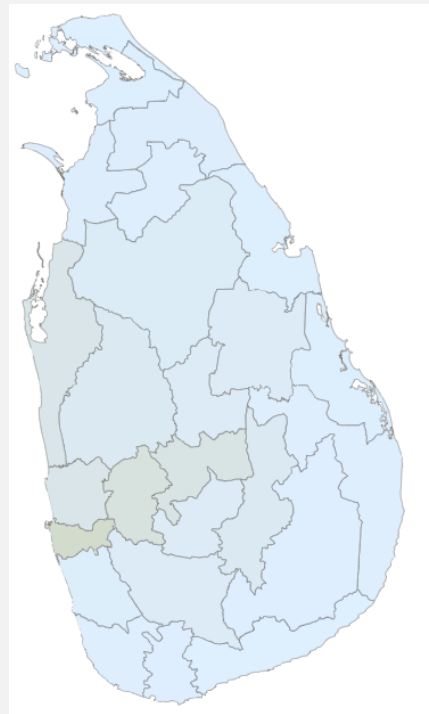
Data Source: DMC

Districts	Affected Persons	IDPs with Host Community
Ampara	0	0
Anuradhapura	0	0
Badulla	90127	21473
Batticaloa	0	0
Colombo	57	0
Galle	0	0
Gampaha	0	0
Hambantota	0	0
Jaffna	0	0
Kalutara	0	0
Kandy	8513	8513
Kegalle	36703	36060
Kilinochchi	0	0
Kurunegala	0	0
Mannar	0	0
Matale	23083	23083
Matara	0	0
Monaragala	0	0
Mullaitivu	0	0
Nuwara Eliya	61459	60691
Polonnaruwa	0	0
Puttalam	0	0
Ratnapura	40	45
Trincomalee	62	62
Vavuniya	0	0



Fully Damaged Houses

5,866

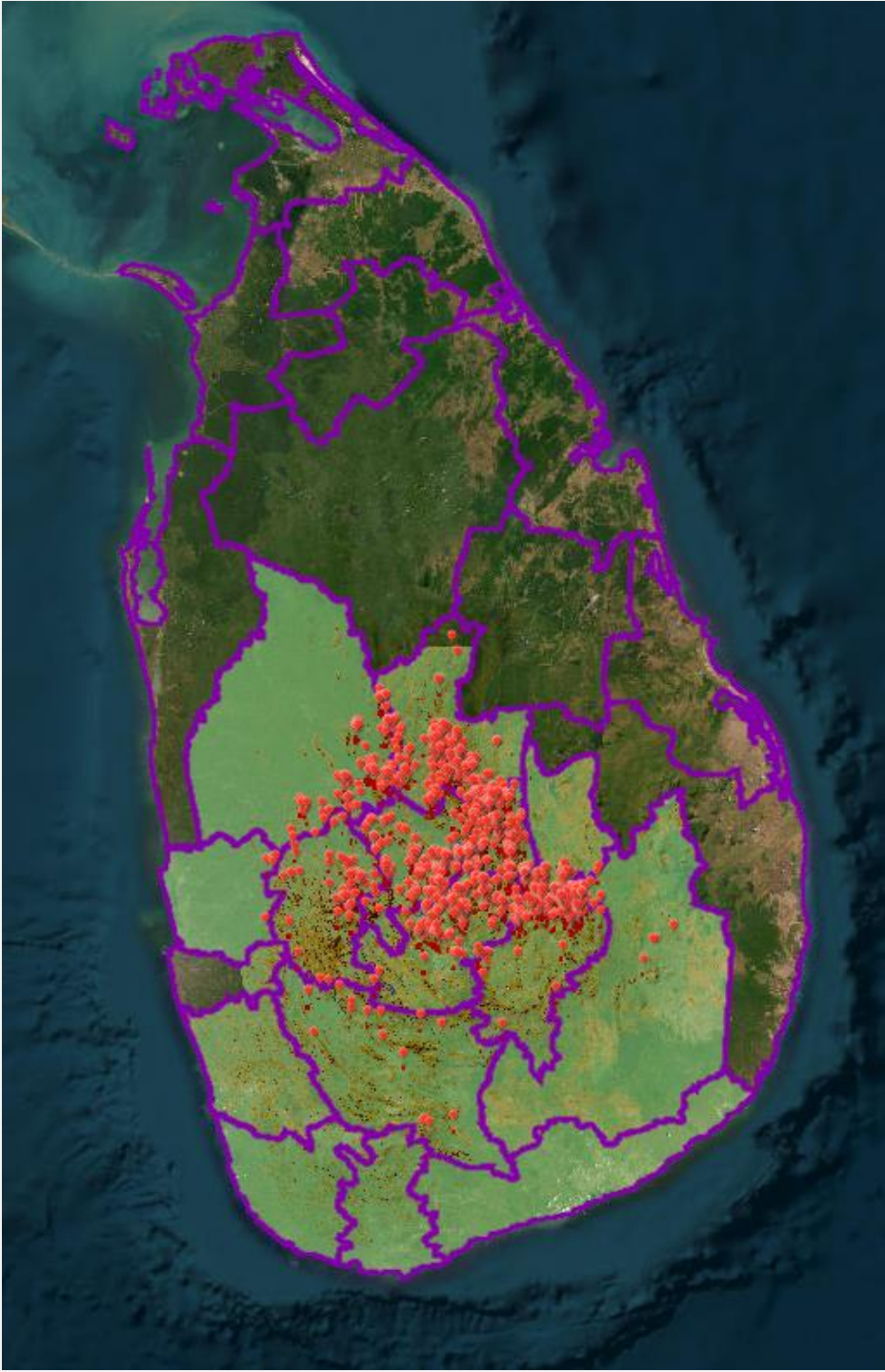


Partially Damaged Houses

109,629

Data Source: DMC

Districts	Fully Damaged Houses	Partially Damaged Houses
Ampara	111	729
Anuradhapura	265	3300
Badulla	549	5511
Batticaloa	11	1054
Colombo	141	21353
Galle	0	716
Gampaha	256	10067
Hambantota	3	299
Jaffna	2	520
Kalutara	1	1562
Kandy	1739	11631
Kegalle	295	13737
Kilinochchi	1	962
Kurunegala	634	5531
Mannar	79	1587
Matale	259	4134
Matara	1	637
Monaragala	40	591
Mullaitivu	41	1691
Nuwara Eliya	587	4171
Polonnaruwa	160	3777
Puttalam	651	9931
Ratnapura	6	4083
Trincomalee	19	1386
Vavuniya	15	669



Districts	Number of Houses at High Risk
Kandy	5,190
Badulla	1,874
Nuwara Eliya	1,865
Kegalle	1,825
Matale	1,590
Kurunagala	850
Ratnapura	82
Gampaha	73
	13,349

13,349

Number of Houses at High Risk

Data Source: NBRI

- Emergence of **informal settlements**, especially in hill country
- **Protection risks**, lack of WASH, and threat of eviction
- **Unsafe returns** to damaged homes or hazard-prone areas
- Existing **tent solutions not viable** with upcoming monsoon rains

CURRENT GAPS (SECTOR OBSERVATIONS)





CURRENT GAPS (SYSTEM-LEVEL CONSTRAINTS)

- No dedicated **Government funding** for transitional shelter
Few agencies committed but more to come (**IOM, SLRCS., UNH, CSOs**)
- **Limited donor engagement** in this area
- **Ambiguity on eligibility and entitlements**, both for authorities and communities > no clear direction and information for people

Result:

A growing number of households are **falling through the gap between emergency response and recovery**



WHAT IS NEEDED

We need to move beyond single solution Housing approaches towards phased, risk-informed pathways from displacement to Durable solutions:

Transition Phase/temporary living arrangements are key

“Transitional shelter is no longer optional—it is a **critical, time-sensitive gap** in the response.”

**CORE PROPOSAL –
TWO
COMPLEMENTARY
PILLARS: PERMANENT
HOUSING SUPPORT**

- **A. Continue and Scale Owner-Driven Permanent Housing**
 - Build on India's proven model
 - Align with Government compensation schemes
 - Integrate **climate-resilient construction**
 - Ensure inclusion of **landless and marginalised households**



CORE PROPOSAL – TWO COMPLEMENTARY PILLARS:

T-SHELTER SUPPORT

- **B. Invest in Transitional Shelter as a Strategic Priority**
- Target groups:
 - Households in **red zones (non-return areas)**
 - Families awaiting **land allocation or relocation**
 - Those in **host communities, informal sites, or unsafe conditions**
- Positioning:
Transitional shelter as a structured, durable interim solution—not a temporary fix
- [SPI7-18_A24-SriLanka-2017.pdf](#)



LESSONS FROM RECENT RESPONSES

- ✓ More centralised or contractor-driven approaches can face challenges:
- ✓ Limited adaptation to **diverse climatic zones (flood, hill, coastal)**
- ✓ Reduced **community ownership and long-term sustainability**
- ✓ Higher costs due to **logistics and external supply chains**
- ✓ Risk of **mismatch with household needs**

PROPOSED DELIVERY MODEL

- 1. Direct cash or conditional grants to households**
- 2. Technical assistance via local organisations (CBOs/CSOs)**
- 3. Menu of adaptable shelter designs based on context**
- 4. Agreed minimum standards (safety, dignity, WASH integration)**

WHY THIS APPROACH WORKS

- **Faster implementation** (reduced dependency on supply chains)
- **Lower costs** (local sourcing of labour and materials)
- **Scalable across diverse geographies**
- **Stronger ownership and maintenance**
- **Supports local markets**, which are now recovering
- Environmentally sound, recycling materials, no asbestos

SETTLEMENTS APPROACH

- **Settlement Approach – Flexibility Based on Context**
- Combination of:
 - **Shelters on future housing plots (preferred)**
 - **Small-scale clustered or camp-like settings where necessary**
- Driven by:
 - **Community consultation**
 - **Cultural appropriateness**
 - **Access to services and livelihoods**
 - **Climate adaptation considerations (drainage, elevation, heat etc)**



PRACTICAL ENTRY POINTS

- **Pilot transitional shelter programmes in high-need districts: immediate start funding for 1000 TS?**
- **Link transitional shelter to clear pathways to permanent housing (ie. Identify land and engage with authorities before not after construction)**
- **Support community consultation and site planning processes**
- **Work through local organisations/CSOs for implementation and technical support**

COORDINATION TEAM

Muhammad Maaji– Sector Co-coordinator (IOM)

mmaaji@iom.int

+2348036830448

Sandra D'URZO – Sector Co-coordination (IFRC)

Sandra.durzo@ifrc.org

+41792173314

Aeneas Jerron Velu – Sector Information Management Associate (IOM)

avelu@iom.int / +94 76 484 1663

Aziza USOOF – Sector Technical Coordinator HLP (UN Habitat)

aziza.usoof@un.org



Shelter, Land and Site Coordination Sector Sri Lanka



Join the WhatsApp group of the
SLSC Sector, Sri Lanka for live
communications and updates