



Join the WhatsApp group of the
SLSC Sector, Sri Lanka for live
communications and updates



Shelter, Land and Site Coordination Sector Sri Lanka

NATIONAL SHELTER, LAND & SITE COORDINATION SECTOR

Meeting Asian Infrastructure Investment Bank (AIIB)

Tue, 31 March 2026



THE PROBLEM STATEMENT / RISK FACTORS



Large-scale housing damage
+ unsafe returns > future
disaster costs locked in



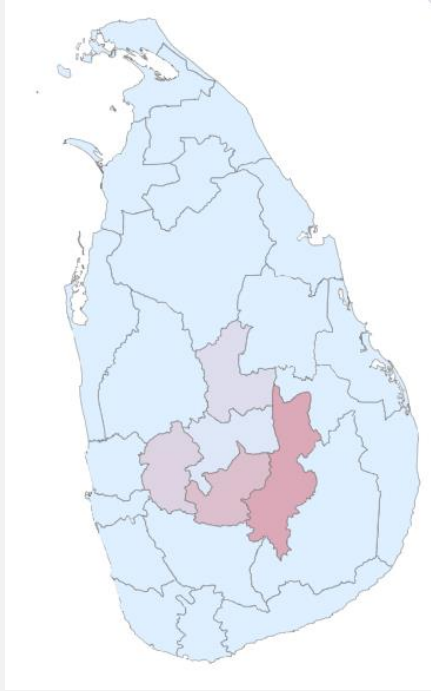
Fragmented recovery >
inefficient investments



Climate risks exacerbated
(floods, landslides, coastal
erosion) > repeated losses
without CC adaptation

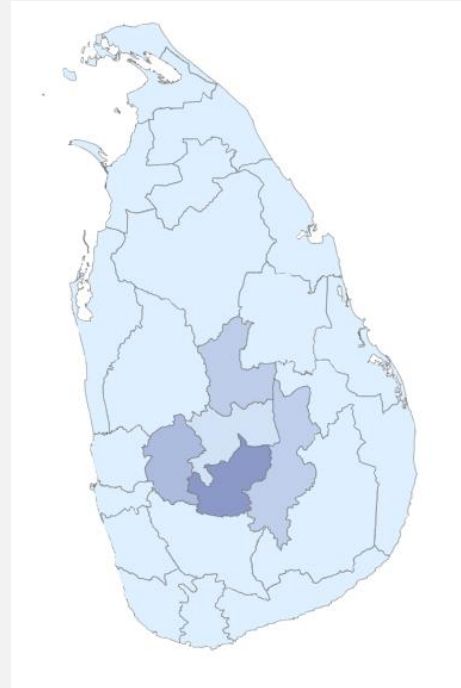


Land and tenure constraints
> exclude the most
vulnerable from formal
investment



Total affected IDPs

220,044

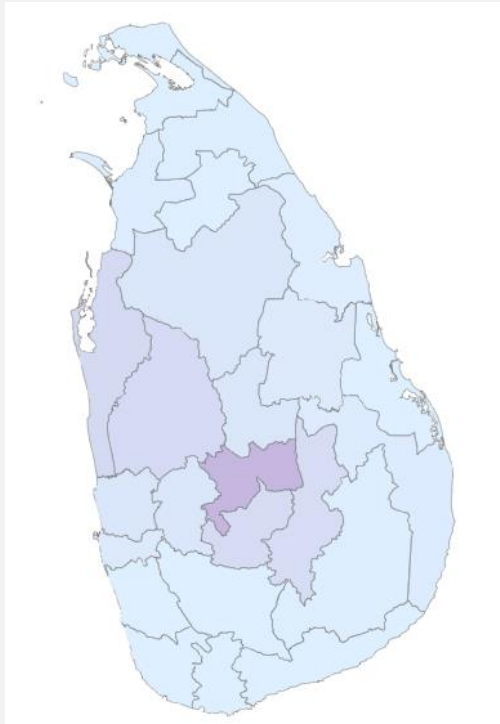


IDPs with the Host Community

149,927

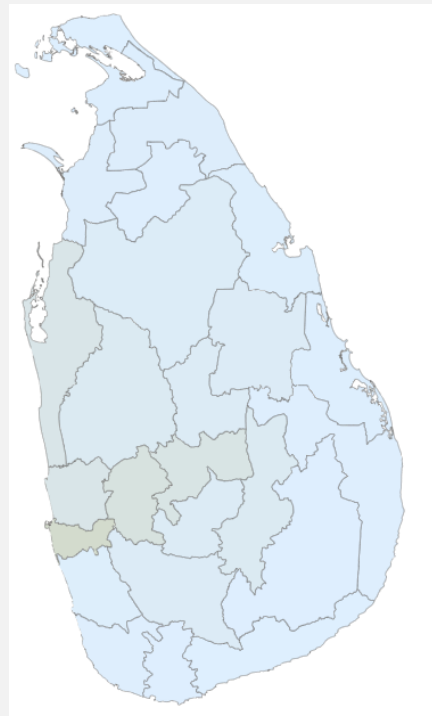
Data Source: DMC

Districts	Affected Persons	IDPs with Host Community
Ampara	0	0
Anuradhapura	0	0
Badulla	90127	21473
Batticaloa	0	0
Colombo	57	0
Galle	0	0
Gampaha	0	0
Hambantota	0	0
Jaffna	0	0
Kalutara	0	0
Kandy	8513	8513
Kegalle	36703	36060
Kilinochchi	0	0
Kurunegala	0	0
Mannar	0	0
Matale	23083	23083
Matara	0	0
Monaragala	0	0
Mullaitivu	0	0
Nuwara Eliya	61459	60691
Polonnaruwa	0	0
Puttalam	0	0
Ratnapura	40	45
Trincomalee	62	62
Vavuniya	0	0



Fully Damaged Houses

5,866

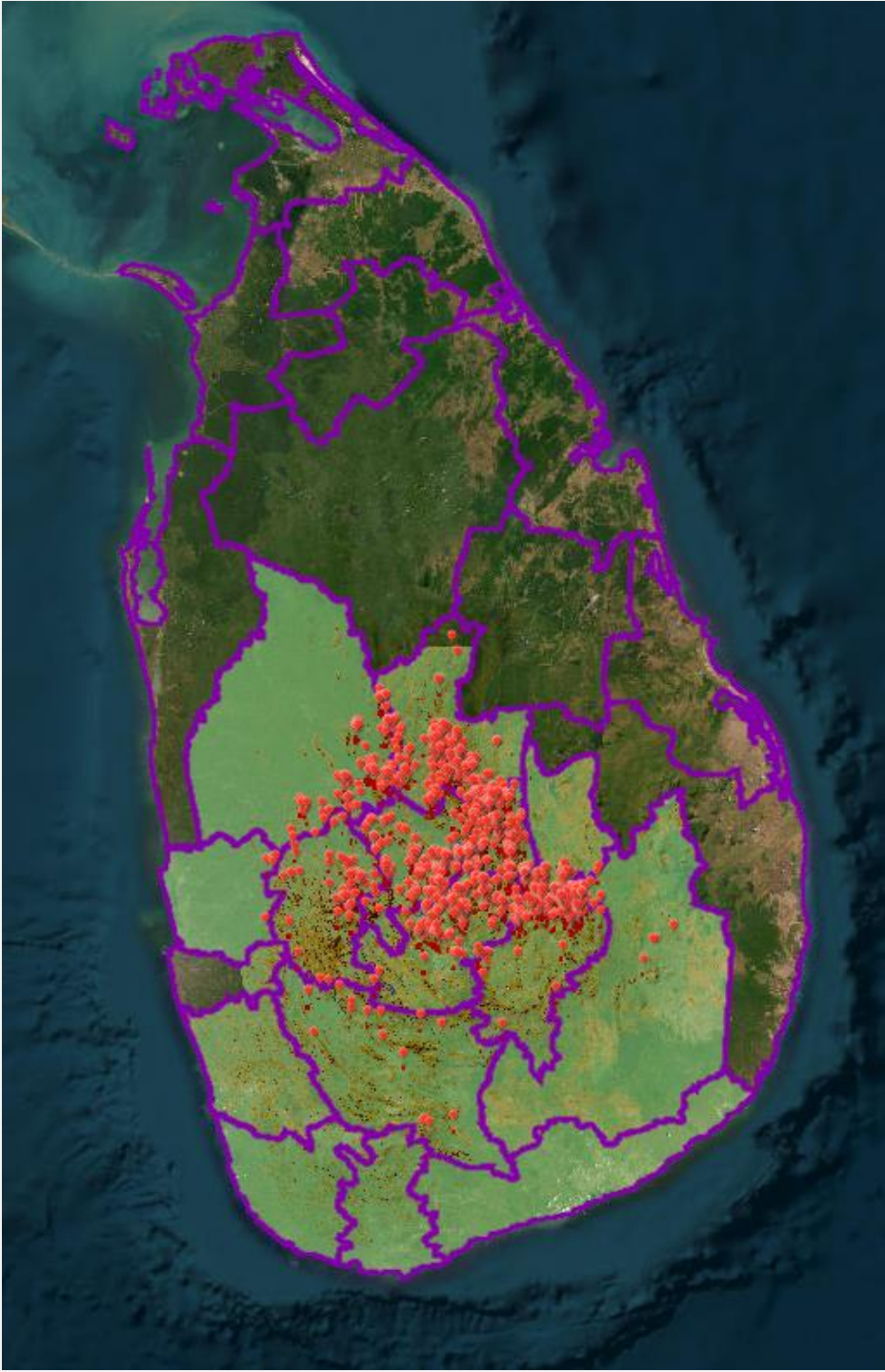


Partially Damaged Houses

109,629

Data Source: DMC

Districts	Fully Damaged Houses	Partially Damaged Houses
Ampara	111	729
Anuradhapura	265	3300
Badulla	549	5511
Batticaloa	11	1054
Colombo	141	21353
Galle	0	716
Gampaha	256	10067
Hambantota	3	299
Jaffna	2	520
Kalutara	1	1562
Kandy	1739	11631
Kegalle	295	13737
Kilinochchi	1	962
Kurunegala	634	5531
Mannar	79	1587
Matale	259	4134
Matara	1	637
Monaragala	40	591
Mullaitivu	41	1691
Nuwara Eliya	587	4171
Polonnaruwa	160	3777
Puttalam	651	9931
Ratnapura	6	4083
Trincomalee	19	1386
Vavuniya	15	669



Districts	Number of Houses at High Risk
Kandy	5,190
Badulla	1,874
Nuwara Eliya	1,865
Kegalle	1,825
Matale	1,590
Kurunagala	850
Ratnapura	82
Gampaha	73
	13,349

13,349

Number of Houses at High Risk

Data Source: NBRI



THE OPPORTUNITY

With the right approach, this can shift from a **recurrent humanitarian cost to resilient infrastructure and housing** investment areas /opportunities to contribute to TC Ditwah recovery

PROPOSED INVESTMENT OPPORTUNITIES: AREA I



RESILIENT HOUSING AND
COMMUNITY
RECONSTRUCTION



CO-FINANCE GOV
COMPENSATION
SCHEMES



EMBED AND FUND
TECHNICAL ASSISTANCE
TO BBS AND DESIGN
STANDARDS



USE LOCAL AND
ENVIRONMENTALLY
SOUND MATERIALS



SUPPORT INCREMENTAL ,
EXPANDABLE HOUSING
MODELS



PROPOSED INVESTMENT OPPORTUNITIES: **AREA 2**

I. Risk informed settlement planning:

- ✓ Invest in safe, serviced land for relocation and integrated in Gov administration (ie. Tea Estates)
- ✓ Integrate drainage, slope stabilisation, flood mitigation
- ✓ Link housing to access to services (incl. restoration of railway connection) and livelihoods in remote rural areas



PROPOSED INVESTMENT OPPORTUNITIES: **AREA 3**

1. Climate adaptation and green investments

- ✓ Landslide risk reduction (especially hillcountry)
- ✓ Nature based solutions
- ✓ Housing adaptation (heat resilience, flood resilient standards)

ENABLING SYSTEMS

- Hazard mapping and **risk data systems**
- Support **early warning and invest in key community infrastructure** (ie. Evacuation centres), environmental and **disaster preparedness**
- Support **HLP land allocation and inclusive eligibility** for most marginal communities (durable solutions tea Estate communities) with CSO support / monitoring role

CROSS CUTTING PRINCIPLES

Localisation = efficient delivery, local actors reduce costs and improve outreach

Community-driven approaches = sustainability, speed and local buy-in

Equity and social Inclusion (urban poor, hillcountry communities, living in rural exposed areas) = reduced exposure risk and social instability


ENTRY POINTS AND OPENING THE DIALOGUE

Pilot district-level integrated recovery models and settlement profiling

(Kandy, Badulla, Nuwara Eliya..)

Integrate suitable land identification in consultative manner along with satellite mapping/ surveys: key for safe return and resettlement and support of Malaiyaha communities

Co-design with the Government and implementing partners a resilient 'housing and infrastructure window' (based on PDNA, local CSO assessments and role in monitoring plans)

A photograph of a woman in a pink shirt and red skirt holding a baby in front of a house. The house has a white pillar and a window with the number 24. A large potted plant is in the foreground. The background shows a dirt path and a stone wall with plants.

SUCCESSFUL RESILIENT POST- DISASTER HOUSING SCHEMES

COORDINATION TEAM

Muhammad Maaji– Sector Co-coordinator (IOM)

mmaaji@iom.int

+2348036830448

Sandra D'URZO – Sector Co-coordination (IFRC)

Sandra.durzo@ifrc.org

+41792173314

Aeneas Jerron Velu – Sector Information Management Associate (IOM)

avelu@iom.int / +94 76 484 1663

Aziza USOOF – Sector Technical Coordinator HLP (UN Habitat)

aziza.usoof@un.org



Shelter, Land and Site Coordination Sector Sri Lanka



Join the WhatsApp group of the
SLSC Sector, Sri Lanka for live
communications and updates