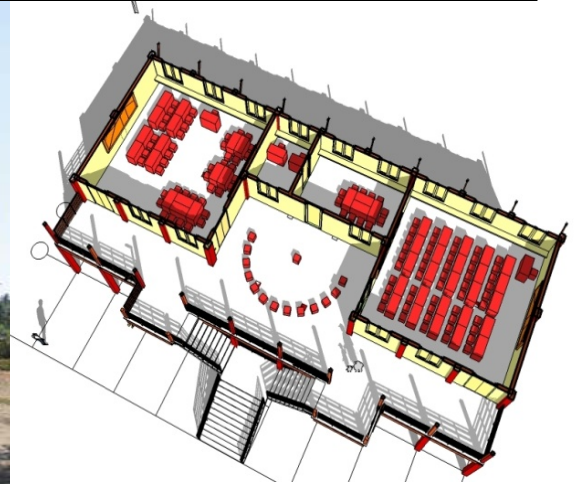




# School / Storm Shelter Reconstruction Project



SDC - HA Myanmar

**Project Title:**

School / Storm Shelter  
Reconstruction

**Swiss Government  
Contribution:**

3.0 Mio. US\$

**Time Frame:**

1.12.2009 – 31.12.2010

**Geographic Focus:**

Cyclone Nargis affected Delta,  
Ayerawaddy Division, Pyapon  
and Bogale Townships,  
Myanmar

**Implementing Agency:**

**Swiss Agency for  
Development and  
Cooperation, SDC  
Humanitarian Aid**  
Programme Office Yangon

No. 11, Kabaung Lane,  
5 ½ Mile, Pyay Road  
Hlaing Township,  
Yangon, Myanmar

Tel/Fax: +95(0)1 534754

## Project Summary

**Objective and Outcome:**

Reconstruction of 46 classrooms (18 Schools/Storm Shelters) serving 2300 students in 15 villages. The lower floor can be used for additional classrooms (+2000 students) or community meetings etc.

The veranda together with the classrooms on the first floor will serve as a safe haven for the communities when disaster strikes. Each storm shelter is having an average capacity of accommodating 700 to 1000 people.

**Structural concept and finishing design:**

The schools / storm shelters are built fully disaster resistant (floods, cyclones, earthquakes) and comply with international norms, safety and quality standards and the national building codes.

The frame is made in reinforced concrete on a slab foundation, the walls are made in bricks, cement plastered and painted. The wooden roof trusses are covered with powder coated CGI sheets. The first floor is in precast concrete and 2" concrete trowel finish, doors and shutters in wood, the suspended ceiling with plasterboard and painted.

The building is fully furnished and equipped with rain water supply collection and storage tank, sanitary installations and schoolyard development, incl. safe access.

*The Swiss Confederation's Humanitarian Aid activities in Myanmar started in 1999. Since May 2008, SDC operates a programme office in Yangon. The Medium Term Programme 2010 -12 defines the objectives "to restore and improve the living conditions and reduce vulnerability of people at risk".*

*Every year SDC-HA spends approx. **US\$ 3.6 million** in Myanmar. About one million people are direct or indirect beneficiaries.*

*During 2008/09, an additional budget of US\$ 5.1 million for emergency and early recovery support was provided following the Cyclone Nargis.*

# SDC - HA Myanmar



Schweizerische Eidgenossenschaft  
Confédération suisse  
Confederazione Svizzera  
Confederaziun svizra

Swiss Agency for Development  
and Cooperation SDC



Myanmar Information Management Unit

## Schools Reconstructed by SDC-HA Ayeyarwady Division



Map ID: MIMU357v01  
GLIDE Number: TC-2008-000057-MMR  
Creation Date : 26 January 2010.A3  
Projection/Datum: Geographic/WGS84  
Map produced by the MIMU - info.mimu@undp.org

Planned	Under Construction	Schools
		Primary School
		Middle Associated
		Middle Branch
		High School

Land Cover	Other villages

Data Sources : SDC  
BASE MAP-(MIMU)  
Boundaries-WFP  
modified by MIMU 2008  
Place names-Ministry of  
Home Affair (GAD)  
translated by MIMU

EUROPEAN COMMISSION  
Humanitarian Aid

Disclaimer: The names shown and the boundaries used on this map do not imply official endorsement or acceptance by the United Nations.