



PALESTINE  
**SHELTER CLUSTER**

Coordinating Humanitarian Shelter and Settlements

---

# WB SHELTER CLUSTER MEETING

---

28 April 2025

# Meeting Agenda



1. Cash rental support – discussion with key partners on approach, values and references for market rental assessment .
2. Area C operations position paper – under review by SAG members for finalization and endorsement.
3. Discussion with the Cash Working Group – alignment on modalities, targeting, and duplication avoidance.
4. Damage assessment in the camps – update on methodology and progress.
5. Technical update – recent technical developments.
6. Information Management (IM) update – data tracking, tools, and reporting improvements.
7. Partner update – preparation for the next meeting, including case studies, lessons learned, and key highlights by partners.
8. AOB

## **1. Cash rental support – discussion with key partners on approach, values and references for market rental assessment**

1. A meeting was conducted with UNRWA and ACTED to agree on and harmonize rental support values (Rental Support SoPs)
2. For partners operating in Area C and East Jerusalem, specific contextual considerations apply; however, maintaining overall alignment across locations remains essential.
3. It was agreed to use cost of living indices published by PCBS as a reference to develop consistent rental support values across all geographical areas.
4. Key action: the Cluster will contact the PCBS focal point to check for any updated cost of living indices related to rent.
5. Next step: based on available data, the Cluster technical team, together with key partners, will review the rental SOPs, taking into account all relevant factors.

## **2. Area C operations position paper – under review by SAG members for finalization and endorsement.**

1. The final draft has been shared with SAG members for review and feedback.
2. A consolidated version will be prepared based on inputs received and re-shared with SAG members for endorsement.
3. Action: Once endorsed, the final document will be circulated internally among Cluster partners.

### **3. Discussion with the Cash Working Group – alignment on modalities, targeting, and duplication avoidance.**

1. A meeting was conducted with the CWG to discuss different cash response modalities and their applicability.
2. It was agreed that the preference between cash and other response modalities should be based on beneficiaries' preferences, market functioning, access constraints, and other key factors to inform response design.
3. It was noted that the shelter component within the MEB reflect the minimum required amount and does not include key elements such as NFIs and rental support.
4. It was agreed to strengthen the use of PDM to generate more reflective and insightful analysis of sectoral needs.
5. The CWG will conduct a market assessment; the ToR will be shared shortly for review.
6. Agreement to continue bilateral discussions with the CWG to ensure ongoing alignment and coordination.

#### **4. Damage assessment in the camps – update on methodology and progress.**

1. As previously mentioned in Cluster meetings, a desktop damage assessment will be conducted across the three camps using recent UNOSAT satellite imagery.
2. The assessment will primarily focus on classifying levels of damage and linking affected structures to their respective owners.
3. Social vulnerabilities will not be captured as part of this assessment.
4. Different types of structures will also be identified and categorized (e.g., residential, commercial, and others).
5. UNRWA will lead this exercise jointly with OCHA, relevant ministries, and camp committees.
6. The findings will be used to inform Cluster partners' programming, particularly for households that may not be able to return to the camps, if permitted, due to the level of destruction of their homes.

**Partner update – preparation for the next meeting, including case studies, lessons learned, and key highlights by partners.**

## 5. Technical update – recent technical developments.

Planned discussion for next TWG  
on Thursday, 30 April

**Final group review of NFI packages.** Packages developed considering

- Family size
- Acute emergency response vs. Meeting displaced family needs under a protracted emergency (terminology to be defined)
- E-vouchers may offer more flexibility

### **Market monitoring of packages**

Clusters will reach out to 2-3 partners bilaterally for support with gathering item costing through vendors.

### **Essential Bedding Kit: Designed to support a household of five**

- Blankets: #1 per person OR #5 average
- Mattresses: #1 per adult; #1 per 2 children OR #3 average for a family of 5,
- Mats: #1 for temporary shelters
- Pillows: #1 pillow per family member OR #5 average
- 2 storage bags

### **For large families (6 or more members)**

- Blankets = #1 per person or #7 average
- Mattresses = #1 per adult; #1 per 2 children, #5
- Mats: #2 for temporary shelters or Carpet #1 for housing unit
- Pillows: #1 pillow per family member OR #7 average
- 3 storage bags

### **Note**

Carpet #1 per HH may be considered in regular response; avoid in acute emergencies

### **E-Voucher**

Families with 6 to 9 members, consider 1.5 sets voucher value  
Families with more than 9 members, consider 2 sets voucher value

## 6. Information Management (IM) update – data tracking, tools, and reporting improvements.



- **5W**

As part of our regular process, we begin collecting intervention data through the 5W tool at the start of each month.

Submitting updates on a rolling basis enables us to promptly reflect the information on the dashboard and keep it current.

This approach ensures that all partners remain informed of ongoing activities and progress across the West Bank.

- **Capacity Mapping**

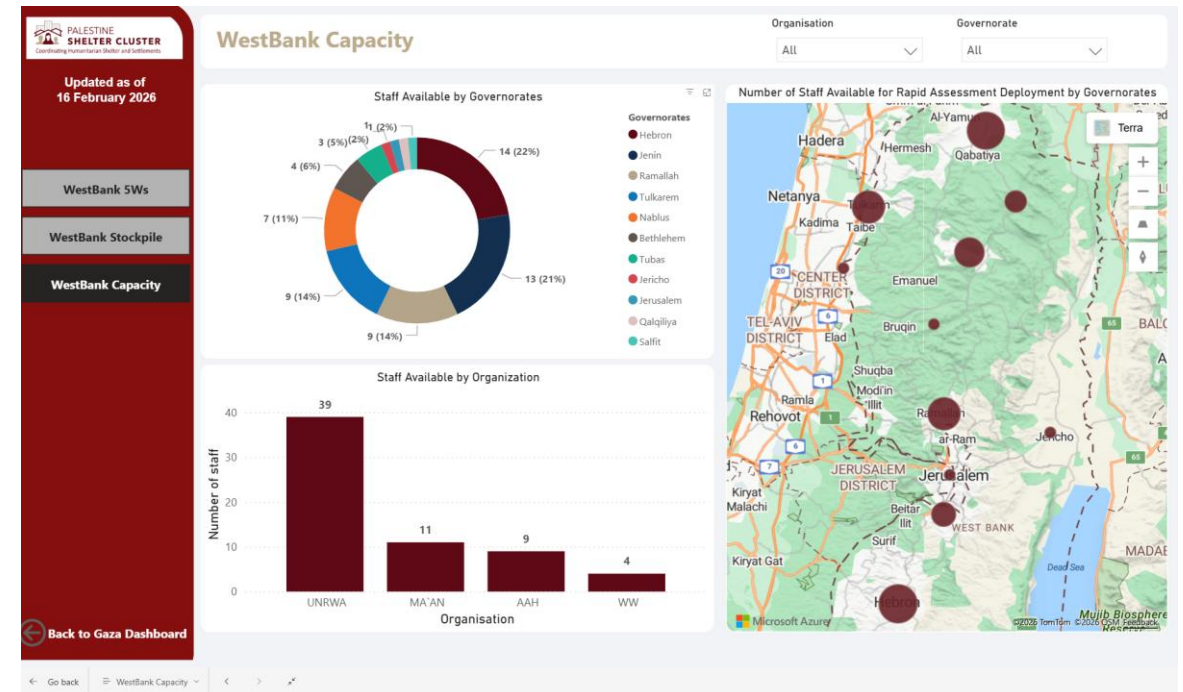
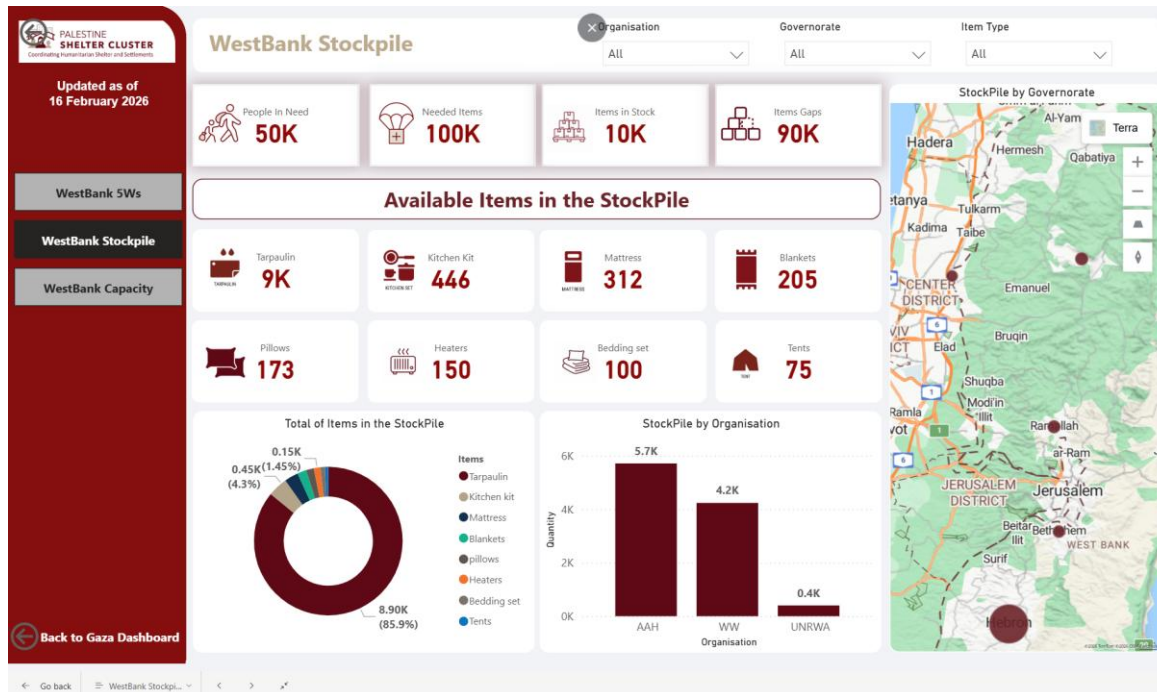
**Action Required:** Please update the **Stockpile, Pipeline, and Capacity Mapping** online sheet in the Partners Folder with your most recent data.

**Why this matters:** Your timely reporting is essential for accurate cluster-level analysis and decision-making. Up-to-date information enables us to clearly assess overall capacity, strengthen preparedness for potential incidents, and quickly identify gaps where support may be needed.

**Your contribution is key** to ensuring effective coordination, informed planning, and a strong collective response.

## 6. Information Management (IM) update – data tracking, tools, and reporting improvements.

- To support this work, we have developed **two new dashboards** for stockpile and capacity mapping. These dashboards are now published on our website: <https://www.sheltercluster.org/response/palestine>



**THNAK YOU**



PALESTINE  
**SHELTER CLUSTER**

Coordinating Humanitarian Shelter and Settlements