

SITUATION OVERVIEW

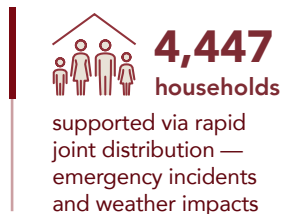
GAZA

- Shelter Cluster partners continued delivering life-saving Shelter and NFI assistance across the Gaza Strip throughout March, responding to urgent needs among affected households through in-kind and voucher modalities.

- In April 2026, Shelter Cluster partners reached approximately 51,425 households across the Gaza Strip with life-saving shelter and NFI assistance through both in-kind and Cash and Voucher Assistance (CVA) modalities. The response included the distribution of 64,017 bedding items, 17,997 bedding kits, 89 tents, 4,944 tarpaulins, 1,711 sealing-off kits (SOKs), and 2,715 clothing kits, in addition to plastic rolls, mattresses, kitchen sets, and Emergency Shelter Kits (ESKs). These interventions remained critical in addressing urgent shelter and household needs, supporting vulnerable and displaced populations, improving living conditions, and helping families cope with ongoing displacement and deteriorating humanitarian conditions across Gaza.



- Following multiple incidents and weather-related impacts reported during April, several appeals were received from affected households across the Gaza Strip. Field visits and rapid assessments were conducted, and through the Rapid Joint Distribution Mechanism, a total of 4,447 households were supported with emergency shelter and essential household items. The response included 324 full packages (tents and NFIs), 6,380 tarpaulins, 595 sealing-off kits (SOKs), 948 clothing kits, and



78 bedding items. Some of the supported families were living in partially damaged buildings and were facing heightened shelter vulnerabilities due to deteriorating living conditions.

- Available stocks of essential household items inside Gaza have reached critically low levels, with remaining supplies sufficient to support fewer than 3,400 additional households.



The facilitation of Shelter and NFI material entry remains urgently required to sustain response operations and respond to ongoing humanitarian needs, particularly considering increased seasonal requirements during the summer period.

- Pipeline constraints continue to significantly limit the shelter response. The timely release of materials currently in the pipeline—particularly solar lights, timber for framing kits, ropes, and tools—remains essential to enable partners to scale up priority interventions. These include repairs of partially damaged shelters, upgrading makeshift shelters, and supporting a gradual transition toward early recovery activities.
- The Shelter Cluster conducted a summarization consultation with partners, with a particular focus on engaging field staff to better understand operational realities on the ground. The consultation captured field-based insights on best practices, key challenges, mitigation measures for summer conditions, priority
- Materials required, and advocacy needs, ensuring that planning, response, and advocacy efforts remain informed, relevant, and grounded in field realities.
- Following the consultation, the Shelter Cluster is currently preparing summarization document to support planned summer shelter interventions and help mitigate the impact of extreme heat and harsh weather conditions on affected populations across Gaza.
- Solar lanterns were recently approved for entry representing a positive development in supporting vulnerable households lacking access to reliable electricity and lighting.

- The Qatari Committee for the Reconstruction of Gaza has initiated the removal of dangerous and protruding concrete elements from damaged buildings across the Gaza Strip to enhance public safety. The intervention targets more than 200 buildings, comprising approximately 750 damaged housing units across various governorates. To date, around 80 buildings have been addressed.
- Partners reported the installation of 150 emergency shelters in Khan Younis using the Emergency Shelter Kit (ESK) designs

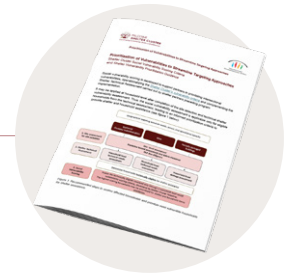


150
emergency shelter kits
installed in Khan Younis using ESK design specs

and specifications developed by the Shelter Cluster. This response aims to provide displaced households with an improved emergency shelter solution that can potentially be upgraded into transitional shelter solutions if additional shelter materials are allowed to enter Gaza.

Technical Updates

- The Social Vulnerability Scoring Tool has been published on the Shelter Cluster website. The Cluster is planning an orientation session in Arabic for enumerators and MEAL teams from partner organizations. The tool can be used to support targeting and prioritization of the most vulnerable households.
- With thanks to UNRWA, MAAN, POD, PHC, جمعية الحياة والأمل and PARC for participating in the tents PDM exercise, the Shelter Cluster received 475 submissions. The Shelter Cluster will finalize the analysis, which will be used for advocacy and lessons learned, and the findings will be shared widely.
- The Shelter Cluster arranged an ESK showcase, which served as an open forum to discuss ESK programming, challenges, targeting, kit contents, and the cash-for-work component. NRC, PARC-CARE, CRS, PARC-ShelterBox, and PHC-IOM presented their programming activities.
- Following the ESK Showcase, Shelter Cluster arranged a visit to different partners' ESK sites to capture lessons learned and enhance future programming. Technical staff from PARC, PHC, CRS, CARE, HEKS-EPER, MAAN, and NRC participated in the visit accompanied by the shelter cluster team in Gaza.



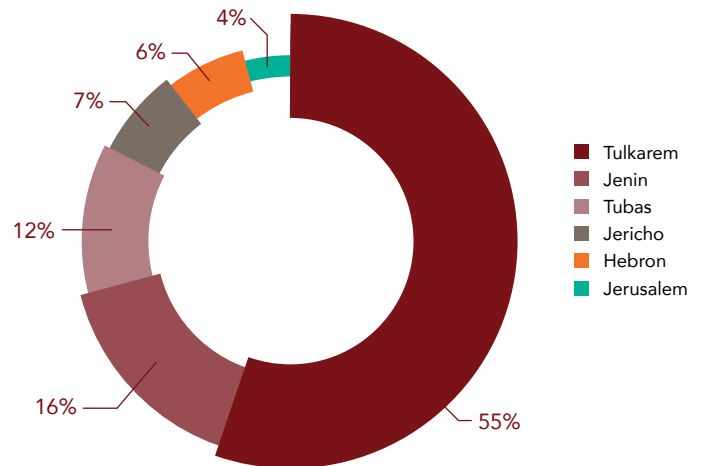
SC joint visit to different partners ESK.

WEST BANK

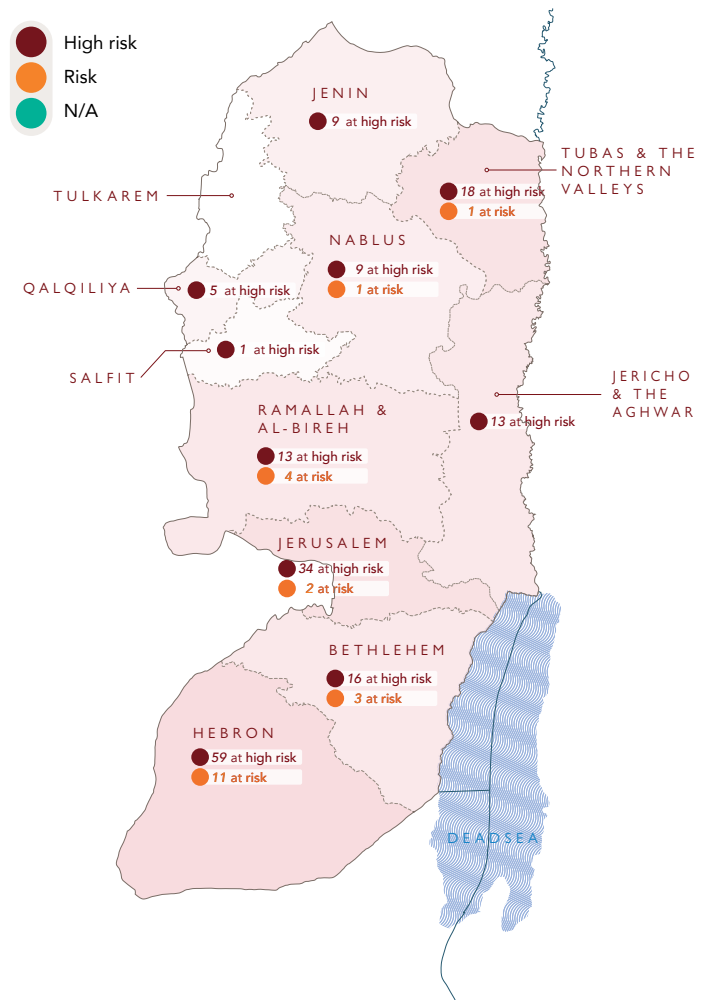
Area C Shelter Vulnerability – Key Updates

- The humanitarian situation in the West Bank continued to deteriorate due to Israeli military operations, settler violence, demolitions, and movement restrictions, resulting in increased displacement, destruction of homes, and damage to critical infrastructure.
- Since January 2023, 117 Palestinian communities have experienced full or partial displacement due to settler violence and access restrictions, with more than 5,900 Palestinians displaced, including around 2,000 people in 2026 alone.
- With the involvement of different stakeholders, the on-desk damage assessment for homes, commercial properties, and other structures has already been piloted and initiated for the three camps. The results are expected within the next 3–4 weeks. The objective of this assessment is to classify the level of damage and link the identified damage to property owners' names and other relevant information.
- Building on the West Bank Protection Consortium (WBPC) multi indicator analysis and informed by years of field monitoring of legal vulnerabilities and presence conditions in Area C, a traffic light risk analysis has been developed. This analysis identifies **217 communities**, of which **100** are assessed to be at **imminent risk of displacement**.
- During April 2026, SC partners reported 32 shelter interventions reaching 2,464 individuals (1,007 households) across multiple areas in the West Bank. Main interventions are clothing vouchers, shelter rehabilitation and upgrade, shelter protection support, provision of tents, and cash rental assistance.
- West Bank Technical Working Group has developed harmonized packages for emergency shelters and household items: bedding kits, kitchen sets, winter clothing, and protection-related items. These packages have been developed based on family size, modality (in-kind/vouchers) and whether the response is for an acute emergency or regular response. As a next step, TWG will work with partners on a price monitoring exercise for these items.

People Reached per Governorate



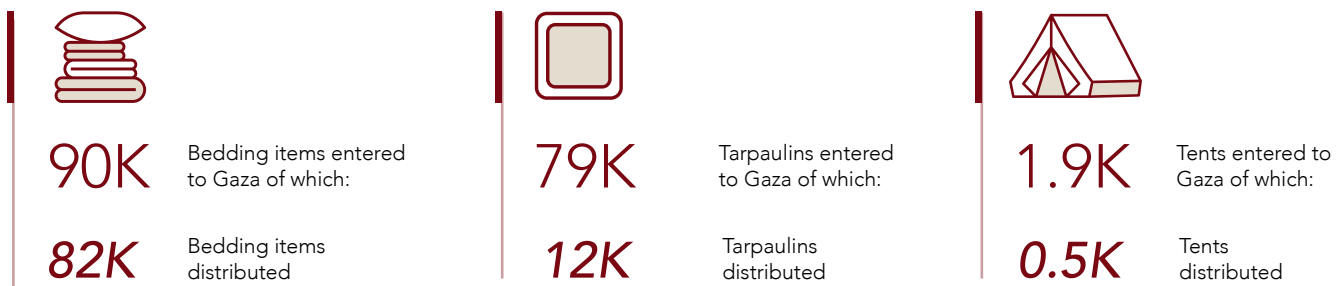
Traffic light risk analysis



SHELTER ASSISTANCE

- During April 2026, Shelter Cluster partners continued implementing planned shelter assistance activities across Gaza despite a highly constrained operational environment, with no major changes reported in the assistance pipeline during the reporting period. Humanitarian shelter needs remain critical due to widespread housing destruction and prolonged displacement, while limited availability of shelter materials, access restrictions, and persistent funding gaps continue to significantly constrain partners’ ability to scale up response efforts and adequately meet the growing needs of affected populations.
- In April 2026, Shelter Cluster partners, in coordination with community and local committees, continued delivering critical shelter assistance across Gaza despite severe operational challenges, including access restrictions, overcrowding, limited shelter resources, and ongoing displacement dynamics. Efforts remained focused on addressing urgent humanitarian needs and supporting the most vulnerable households under increasingly constrained conditions.

GAZA Shelter Partners

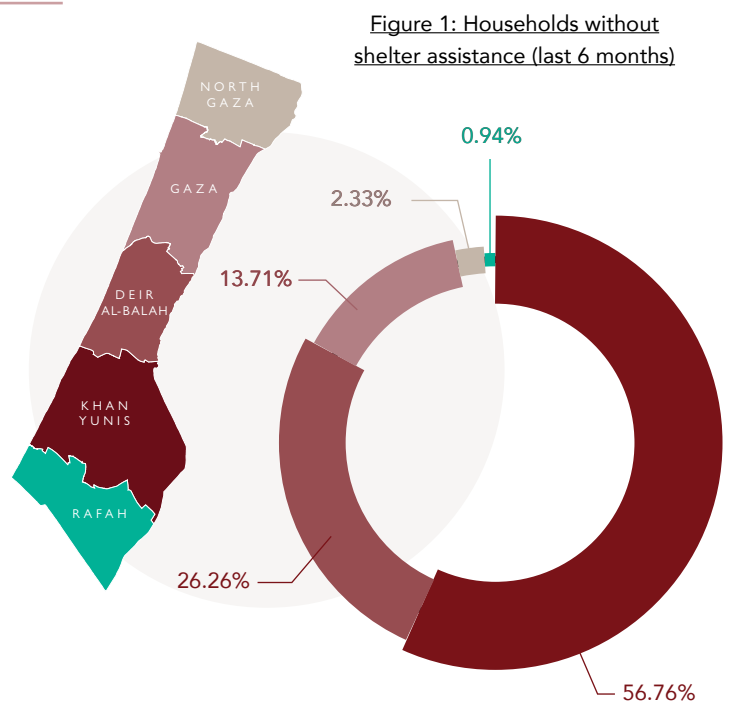


GAZA Shelter & NFI Distribution Activities Mar 2026

The latest available data from the Site Management Cluster indicates significant geographical disparities in the proportion of households that have not received shelter assistance during the past six months as presented in **Figure 1 (Households without shelter assistance for last 6 months)**

- Khan Younis records the highest percentage, with 56.76% of households reporting no shelter assistance, highlighting substantial unmet shelter needs in the area.
- Deir Al-Balah follows with 26.26%, while Gaza governorate accounts for 13.71%.
- In comparison, North Gaza and Rafah report considerably lower percentages at 2.33% and 0.94%, respectively.

These findings suggest that shelter assistance gaps remain heavily concentrated in Khan Younis and Deir Al-Balah, where humanitarian needs continue to outpace available support.



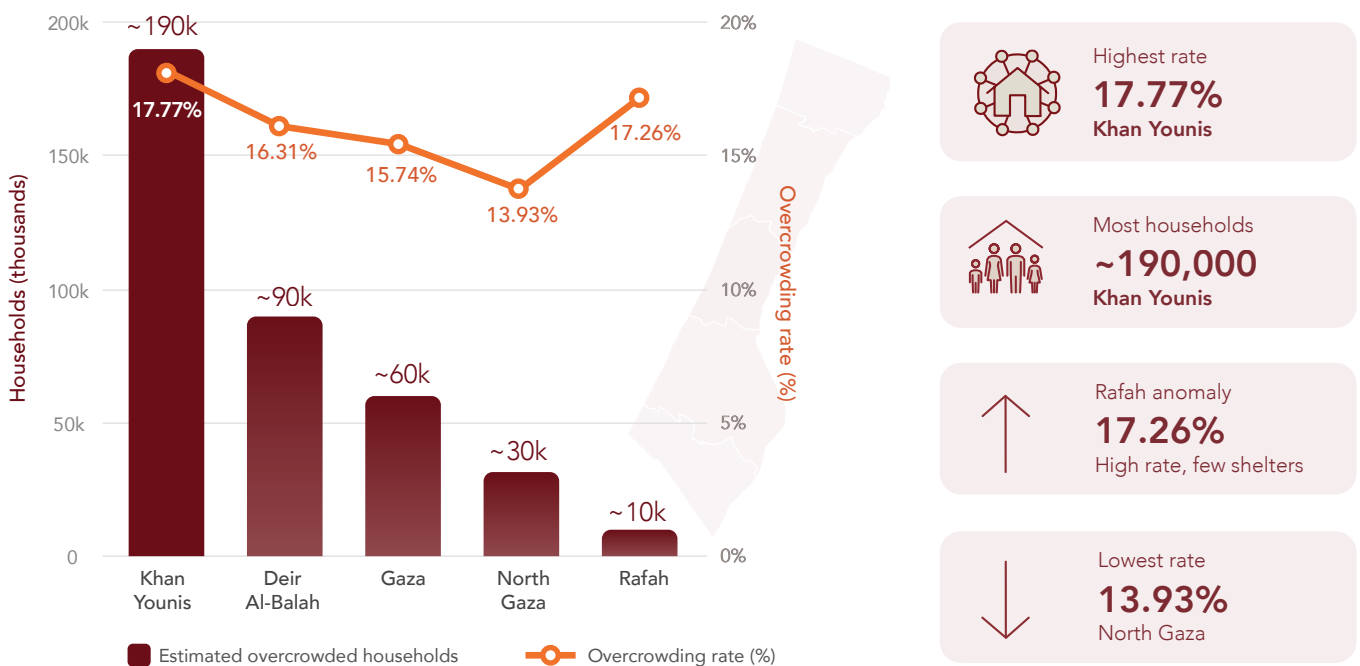
The **Figure 2 (Shelters hosting more than 8 individuals — estimated households + overcrowding rate)** also highlights persistent overcrowding conditions across displacement sites, measured by the estimated percentage of shelters hosting more than eight individuals.

- Khan Younis records the highest estimated number of overcrowded shelters, with approximately 0.19 million households affected and an overcrowding rate of 17.77%, reflecting severe pressure on shelter capacity in the area.
- Deir Al-Balah and Gaza governorates also report high overcrowding levels, with rates of 16.31% and 15.74%, respectively.

- Although North Gaza shows a comparatively lower overcrowding rate of 13.93%, overcrowding conditions remain significant across all governorates.
- Rafah records one of the highest overcrowding rates at 17.26%, despite the lower estimated number of households, indicating that available shelter spaces remain highly congested.

These findings further demonstrate the continued strain on shelter infrastructure and the urgent need for expanded shelter assistance and decongestion interventions.

Figure 2: Shelters hosting more than 8 individuals — estimated households + overcrowding rate



Further compounding the shelter situation, the latest Site Management Cluster data indicates that thousands of households continue to sleep in the open without any form of shelter, exposing families to heightened protection, health, and safety risks. Gaza governorate records the highest number of affected households, with 3,127 households reportedly sleeping in the open, followed closely by Khan Younis with 2,940 households.

Deir Al-Balah also reports critical shelter deprivation affecting 1,568 households, while smaller but still concerning figures are reported in North Gaza and Rafah.

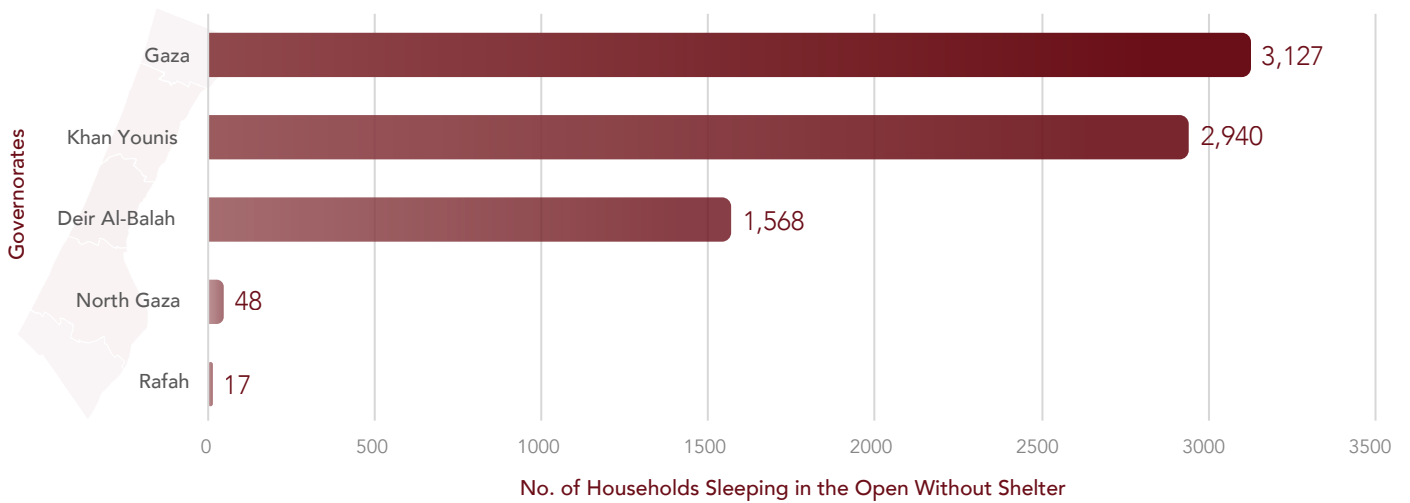
These figures underscore the severe deterioration in living

conditions and the widening gap between shelter needs and available humanitarian assistance.

The continued absence of adequate shelter solutions is forcing vulnerable families to resort to unsafe and undignified coping mechanisms, particularly amid ongoing displacement and limited access to basic services.

Immediate scale-up of emergency shelter assistance, shelter materials, and site expansion interventions remain urgently needed to prevent further deterioration of humanitarian conditions and to uphold the dignity and protection of affected populations.

Figure 3: Number of households continue to sleep in the open without any form of shelter



KEY GAPS AND NEEDS

UNMET NEEDS:

Gap analysis result as of March 2026

Based on the number of people reached over the past six months and the number of people newly displaced during the same period, a thorough analysis—taking all relevant factors into account—indicates that a significant number of people still urgently require shelter assistance.

Emergency Shelter Items



850K

People in Need



Tents



Tarpaulins



Plastic sheets

Household Items



950K

People in Need



Mattresses



blankets



Clothing

CURRENT PIPELINE FOR GAZA

The situation in Gaza up to the end of March for Emergency Shelter and NFI cluster Pipeline status show as below



Tents

25K



Tarpaulins

2K



Bedding Items

1.1M



ESK

40K



Search Light

9K

Source: [Pipeline overview – Gaza emergency shelter and NFI cluster](#)