

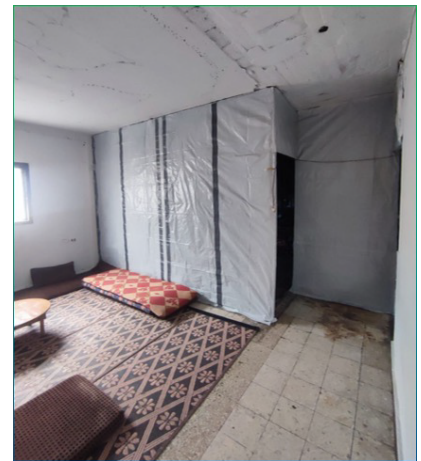
SITUATION OVERVIEW

GAZA

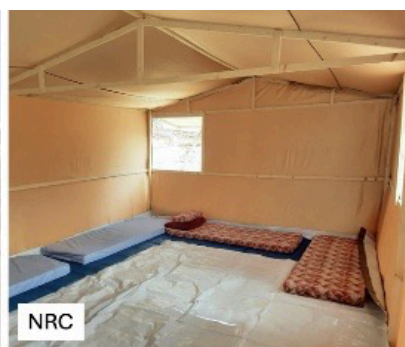
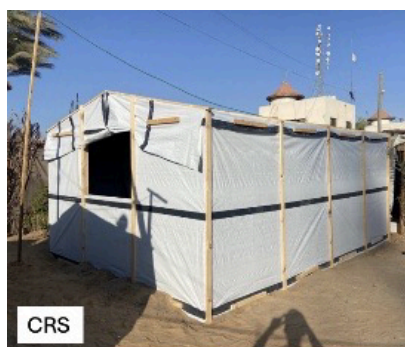
- Shelter Cluster partners continued delivering life-saving Shelter and NFI assistance across the Gaza Strip throughout March, responding to urgent needs among affected households through in-kind and voucher modalities.
- In March 2026, Shelter Cluster partners reached approximately 46,549 households with life-saving shelter and NFI assistance across the Gaza Strip. The response included the distribution of key emergency and winterization items such as **1,881 tents, 2,575 tarpaulins, over 33,000 bedding items, 6,827 bedding kits, and 9,773 SOKs**, alongside kitchen sets, clothing support, and Emergency Shelter Kits (ESKs). These interventions played a critical role in addressing immediate shelter and household needs, improving living conditions, and supporting affected populations in coping with ongoing challenging conditions.
- Following the rain waves throughout March, several appeals were received from affected households. Field visits and rapid assessments were conducted, and through the Rapid Joint Distribution Mechanism, a total of **3,727 households** were supported with emergency shelter and essential household items. This included **699 joint response packages (including tents and NFIs), 2,204 tarpaulins, and 2,129 clothing kits**.
- Current stocks inside Gaza remain extremely limited, with shelter partners reporting only small quantities of items available in-country; partners are therefore encouraged to maintain contingency reserves where possible to respond to sudden emergencies, referral cases, and underserved sites, and to prioritize assistance for the most vulnerable households, with existing stock sufficient to support approximately **29,730 households** with shelter items and **13,933 households** with essential household NFIs.
- The Winterization Plan for 2026–2027 has already been initiated by OCHA, with clusters requested to submit their planned activities, required materials, current pipelines, gaps, and expected impact. The Shelter Cluster emphasizes that emergency response and the provision of items must continue in parallel with early recovery and transitional interventions, as needs on the ground remain dire; due to the ongoing logistical constraints, limited entry capacity, and the types of materials approved, which continue to shape the scale, speed, and modality of the response.
- The Shelter Cluster has intensified its advocacy efforts through multiple meetings and coordination forums with key stakeholders on winterization and summarization, focusing on the entry of materials, the approval of more durable shelter solutions, and addressing logistical constraints. Advocacy has also prioritized increasing the number of partners approved by donors to receive and manage incoming items, to enhance response capacity and ensure more efficient and equitable distribution.
- UNDP, in collaboration with implementing partners, reports that a total of **1,705 RHUs** have been received in Gaza, of which 570 have been installed to date. Installations have been completed across three main sites, while works are ongoing in additional 2 sites. Two sites have not yet started. A total of 62 RHUs has also been installed in health facilities across the Gaza Strip.
- Latest on damage assessment: the comprehensive damage assessment is still ongoing, currently led mainly by two partners. To date, a total of **17,432 buildings** has been assessed, comprising 91,308 housing units (**40,074 totally damaged and 50,991 partially damaged**). Of the assessed partially damaged housing units, **9,075 are classified as uninhabitable, while 40,095 are assessed as habitable — representing approximately 44% of the total assessed housing units**. A dashboard is currently being prepared for publication, which will include key information to guide partners interventions targeting minor and moderately damaged housing units with emergency repair support.
- Several partners are scaling up Emergency Shelter Kit (ESK) programming across Gaza through both external procurement (primarily IOM-led pipelines) and local procurement modalities, adapting to ongoing access and approval constraints. Programming includes a mix of standalone shelter solutions and sealing-off interventions, alongside ongoing pilot approaches.
- One partner reported the entry of **500 framing kits**, marking the first such entry in over a year. However, approved items were limited to wooden poles (2.5 × 5.0 cm sections, 240 cm length), with no nails or tools authorized
- To sustain response despite pipeline constraints, some partners procured shelter and NFI items from the local market, providing bedding kits, kitchen kits, clothing assistance to households through CVA, and framing kits reaching **2000 HH** since the beginning of march.

Technical Updates

- Cash and Markets for Shelter Technical Working Group published Round 2 Market Monitoring Report in March and will commence the next round in April, with inclusion of plywood, wooden pallets and metal sections in round 3.
- In March, the technical team worked on key technical documents (to be published in April) on Shelter Terminology and social vulnerability scoring.
- Under the Emergency Damage Assessment Technical Working Group
 - Damage assessment dashboard has been developed through a collaboration between NPM and Shelter Cluster. To be published soon.
 - EDA TWG has developed a damage assessment tool which is currently being reviewed by TWG members
- The IEC TWG is developing a technical transitional shelter strategy for Gaza, to be reviewed by Gaza SAG in April.
- The Technical Team developed a TOR for a "Shelter and Plot Design TWG", to be initiated in April. The work from this TWG will inform
- The wider Site planning TWG that will be jointly set up by SMC and SC.



After and before photo for emergency shelter repair for partial war damaged house_ credit goes to SAFE



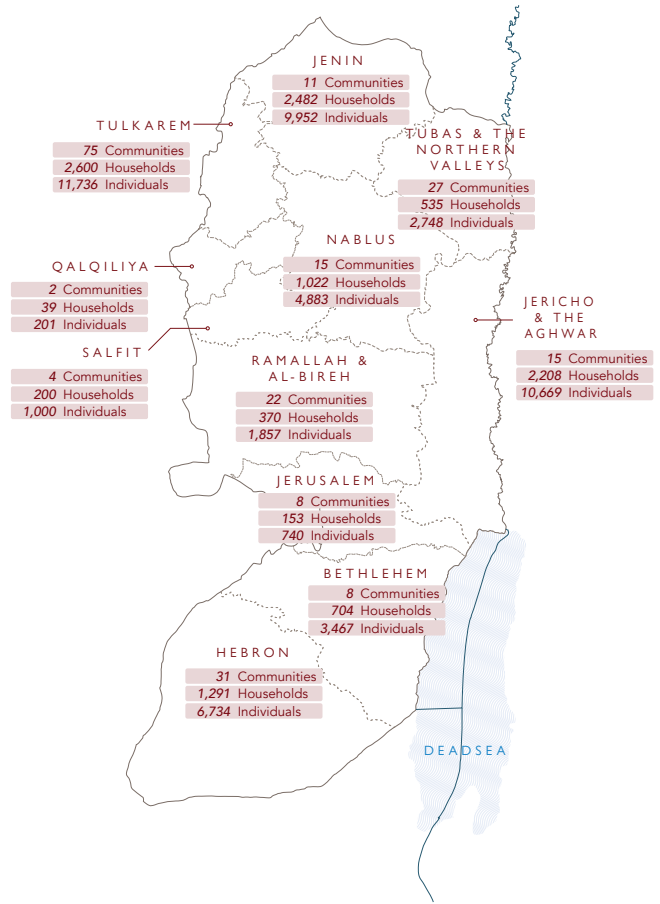
Five partners are implementing ESK programs in quarter one of 2026. More detailed findings on partners ESK to follow.

WEST BANK

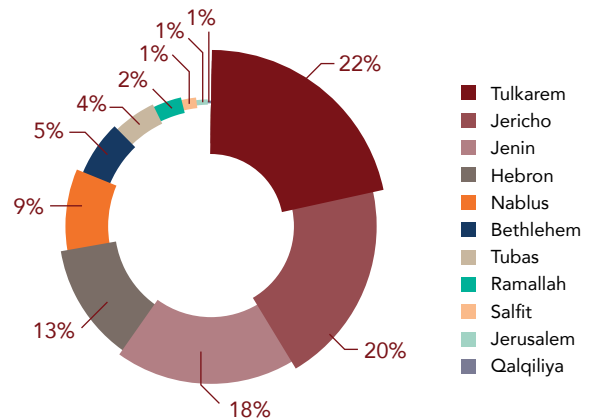
Area C Shelter Vulnerability – Key Updates

218 Communities
11,604 Total Households
53,987 Total Individuals

- With the increasing levels of settler violence, intensified military operations, and the application of various military orders, the Cluster and its partners conducted a comprehensive risk mapping exercise to identify potential displacement caseloads. The analysis estimates that up to **50,000 Palestinians** could be at risk of displacement during 2026, while current response capacities remain critically limited.
- Building on the West Bank Protection Consortium (WBPC) multi indicator analysis and informed by years of field monitoring of legal vulnerabilities and presence conditions in Area C, a traffic light risk analysis has been developed. This analysis identifies **217 communities**, of which **100** are assessed to be at **imminent risk of displacement**.



People Reached per Governorate



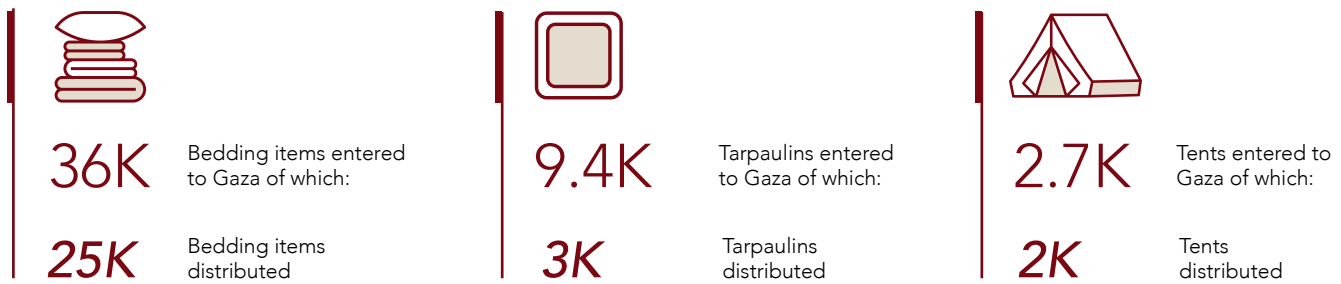
Governorate	At Risk	Forcebly Transferred	High Risk	Imminent Risk	Relocated	Total
Betlehem	3	2	10	6		21
Hebron	11	7	25	30		73
Jenin	1		5	3		9
Jericho	3		3	7		13
Jerusalem	1	1	13	21	1	37
Nablus		2		5		7
Qalqiliya			3	3		6
Ramallah	4	9	3	6		22
Salfit		1		1		2
Tubas	1	2	4	18		25
Tulkarm	2					2
Total	26	24	66	100	1	217

- During March 2026, **26 residential shelters were demolished**, resulting in the displacement of **115 people**, including **44 children**. In addition, tens of shelters sustained damage due to severe settler attacks reported across the West Bank.
- Based on preliminary 5W data, partners were requested to estimate and validate the total number of individuals reached through shelter-related interventions. Overall, **248 activities—128 completed and 120 ongoing—reached 53,387 individuals from 11,604 households**, with an average household size of **4.6 persons**. Assistance was largely concentrated in **Tulkarem, Jericho, and Jenin**, with **PARC, MA'AN Development Center, and Danish Muslim Aid** delivering the majority of support. Interventions primarily focused on **shelter protection and minor to moderate repairs**, supplemented by **essential household items and cash-based assistance**.

SHELTER ASSISTANCE

- During March, shelter partners continued to implement ongoing assistance activities across Gaza in line with planned interventions. No significant changes were reported in the shelter assistance pipeline during the reporting period.
- Humanitarian needs remain critical, driven by extensive housing destruction and prolonged displacement. Operational constraints, including limited availability of shelter materials and persistent funding shortfalls—continue to hinder partners’ capacity to scale up response efforts and adequately address increasing needs.
- The Shelter Cluster continues to coordinate closely with partners to monitor pipeline developments and prioritize areas for response as resources become available.
- In March 2026, Shelter Cluster partners, together with local committees, continued the provision of shelter assistance despite significant operational constraints.

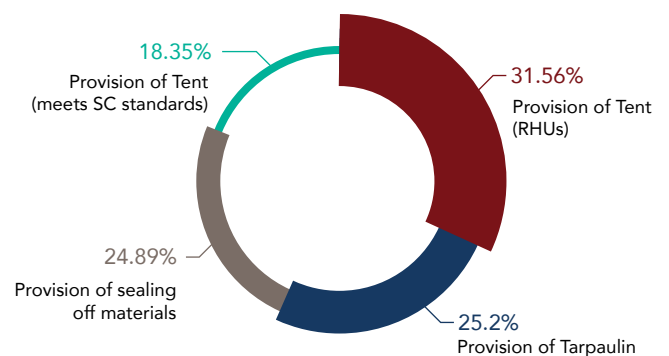
GAZA Shelter Partners



GAZA Shelter & NFI Distribution Activities Mar 2026

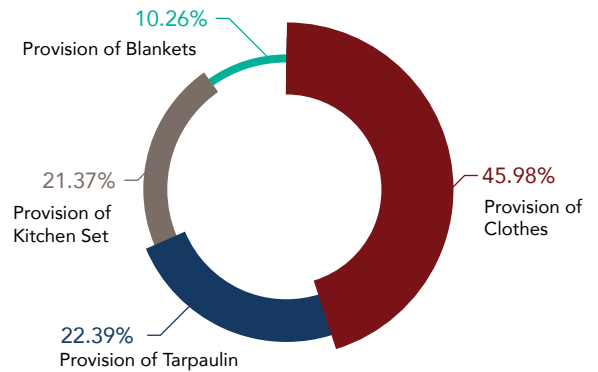
The distribution of shelter assistance in March 2026 shows a balanced but strategically varied response across key activities. The largest share of support was allocated to the provision of tents (RHUs), accounting for 31.56% of total interventions, indicating a continued priority on immediate, life-saving shelter solutions for newly displaced households. This is followed by the provision of tarpaulins at 25.2% and sealing-off materials at 24.89%, reflecting a strong emphasis on transitional support and the reinforcement of partially damaged shelters to improve living conditions. Meanwhile, 18.35% of the response focused on tents meeting SC standards, highlighting targeted efforts to ensure higher-quality, standards-compliant shelter where feasible. Overall, the distribution suggests a dual approach that balances rapid emergency response with incremental shelter upgrades, addressing both urgent needs and medium-term resilience.

Percentage of Shelter Items by Activity Mar 2026



The **NFI distribution in March 2026** was heavily concentrated on **clothing support, which accounted for 45.98%** of all assistance, indicating a significant need for basic personal items among affected populations. **Bedding sets (22.39%)** and **kitchen sets (21.37%)** comprised nearly equal shares, reflecting efforts to restore essential household functionality and improve day-to-day living conditions. In contrast, **blankets** represented a smaller proportion at **10.26%**, suggesting either comparatively lower demand or prioritization of more comprehensive household and personal item support. Overall, the response highlights a strong focus on dignity and immediate household recovery, ensuring that affected communities have access to essential items for both personal use and domestic activities.

Percentage of NFI Distribution by Activity Mar 2026



KEY GAPS AND NEEDS

UNMET NEEDS:

Gap analysis result as of March 2026

Based on the number of people reached over the past six months and the number of people newly displaced during the same period, a thorough analysis—taking all relevant factors into account—indicates that a significant number of people still urgently require shelter assistance.

Emergency Shelter Items



900K

People in Need



Tents



Tarpaulins



Plastic sheets

Household Items



950K

People in Need



Mattresses



blankets



Clothing

CURRENT PIPELINE FOR GAZA

The situation in Gaza up to the end of March for Emergency Shelter and NFI cluster Pipeline status show as below



Tents

24K



Tarpaulins

112K



Bedding Items

1.1M



ESK

43.6K

Source: [Pipeline overview – Gaza emergency shelter and NFI cluster](#)