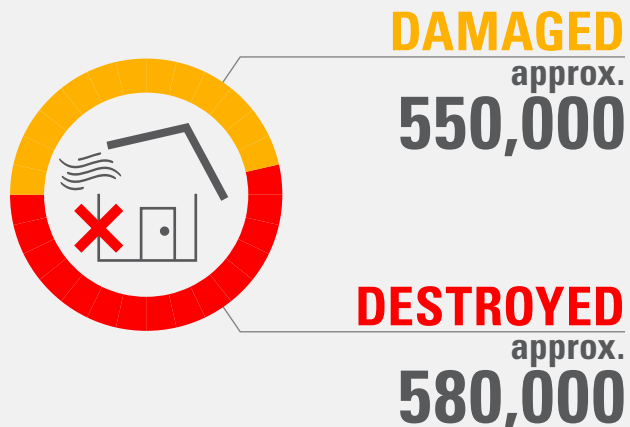


# Typhoon Haiyan

Typhoon Haiyan (locally known as Yolanda) swept through the central Philippines on 8 November 2013, killing more than **6,000** people and displacing **4 million**.

December 16, 2013

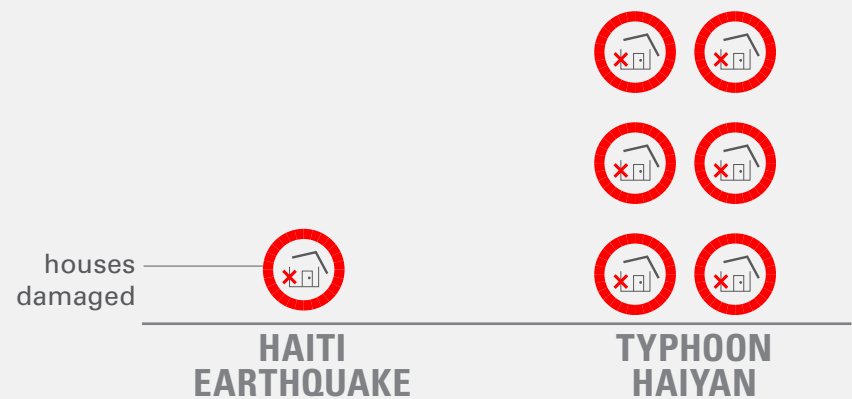
## 1.1 MILLION HOUSES DAMAGED



Source: Department of Social Welfare and Development

## HAITI EARTHQUAKE vs. TYPHOON HAIYAN

Typhoon Haiyan damaged and destroyed more than **6x** as many houses as were damaged by the Haiti earthquake in 2010.



## INTERNATIONAL ASSISTANCE

The Government has asked the international community to address the shelter needs of **500,000** households — approximately **2.5 MILLION** people.

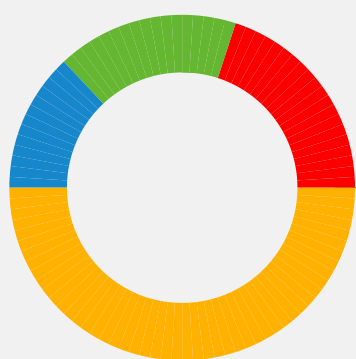
The remaining families will be assisted directly by the government.

Shelter Cluster Partners are planning to provide emergency shelter materials such as tents and tarpaulins to **300,000** households.



**500,000** households will receive more substantial shelter assistance. This "support for self-recovery" includes building materials, corrugated iron sheets, tools, cash etc. Local authorities will receive temporary staff, technical and policy training around community resilience and risk reduction.

## SURVIVORS ARE HARD AT WORK



- 20%** of all households have not started repairing/rebuilding their homes
- 50%** of all households have started but need support in order to finish
- 13%** of all households have started and can finish using their own resources
- 17%** have already finished repairs

Source: REACH Assessment

## DELIVERED

in the first five weeks since Typhoon Haiyan struck the Philippines:

**750,000**

PEOPLE HAVE RECEIVED  
EMERGENCY SHELTER

**200,000**

PEOPLE HAVE RECEIVED  
SUPPORT FOR SELF RECOVERY

Source: Shelter Cluster

## URGENTLY NEEDED

over the next four months, as well as the logistical support to deliver them to the affected communities:

**4 MILLION**

SHEETS OF CORRUGATED IRON  
are needed to provide families with  
durable roofs.

**700,000**

HURRICANE STRAPS as well as  
other fixings and training are needed  
to ensure that roofs are properly  
fixed and homes are built safely.