



### Highlights

- 175,000 people displaced within South Sudan since conflict broke out in South Sudan
- 62,000 people sheltered in secured UNMISS bases.
- Some sites are 15 times denser than humanitarian minimums
- 21,000 people (8013 households) supported with shelter and non food items in Juba so far
- Access (logistics and staffing) to locations outside of Juba remains severely challenging

### Cluster Strategy

- Ensure timely provision of emergency shelter and basic NFI materials for displaced populations in acute emergencies (including supply, prepositioning, distribution);
- Deliver additional shelter options, as needed, for IDPs able to return to their homes using where possible sustainable locally adapted solutions.

#### Cluster objectives

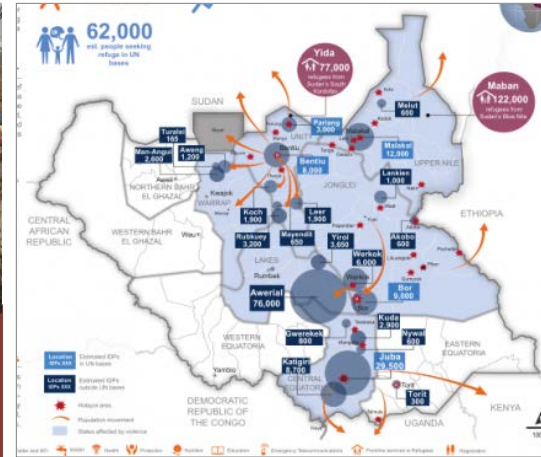
- Delivery of NFI kits to 350,000 people in need of assistance.
- Support the establishment of secure settlement solutions for displaced populations in all affected areas.
- Support the shelter needs of returning populations when it is safe to do so.

### Context and Response

The humanitarian situation in South Sudan has deteriorated sharply since 15 December 2013, when violence erupted in the capital Juba and quickly spread across five states, with fighting between Government and opposition forces. Large-scale displacement and increased humanitarian needs have been reported and it is expected that needs will escalate further in the coming weeks. Aid agencies estimate that up to 400,000 people displaced may need emergency shelter and household items in the coming months, including people displaced into UN peacekeeping bases, and those seeking refuge in other locations. With rapid displacement and high concentrations of people, lack of shelter and basic items such as blankets and mosquito nets will contribute to high rates of malaria and other diseases as well as severe protection concerns in displaced persons sites. The wide-spread violence has also led to significant destruction of homes and property in several key population centres, including Juba, Bor, Bentiu and Malakal, with abandonment raising the possibility of secondary occupation.

### Challenges

- Poor security and instability lead to ongoing displacement into overcrowded conditions in UN compounds.
- Lack of land to create secure sites to de-densify overcrowded sites.
- Lack of transport and road access to sites across the country
- Lack of humanitarian access, given the poor security context



### Key figures

**Total affected population:** 175,000 people  
**Cluster target population:** 350,000 people (planning figure)

**Funding needs:** currently 20million USD (this is due to rapidly change)

Response:	Target	Reached
Non Food Items (People)	350,000	21,000
<b>Settlement type:</b>		
UNMISS bases	62,000	21,000
Dispersed sites	113,000	

Cluster:	
Cluster lead agency	<b>IOM</b>
Co-lead	World Vision
Nbr of cluster partners	<b>32</b>
Nbr of staff dedicated to the cluster	<b>4</b> (plus regional focal points – additional staff incoming)
Nbr of sub-national clusters	<b>11</b>

### Key Dates

Crises : **Complex emergency**  
 Activation of Cluster : January 2010

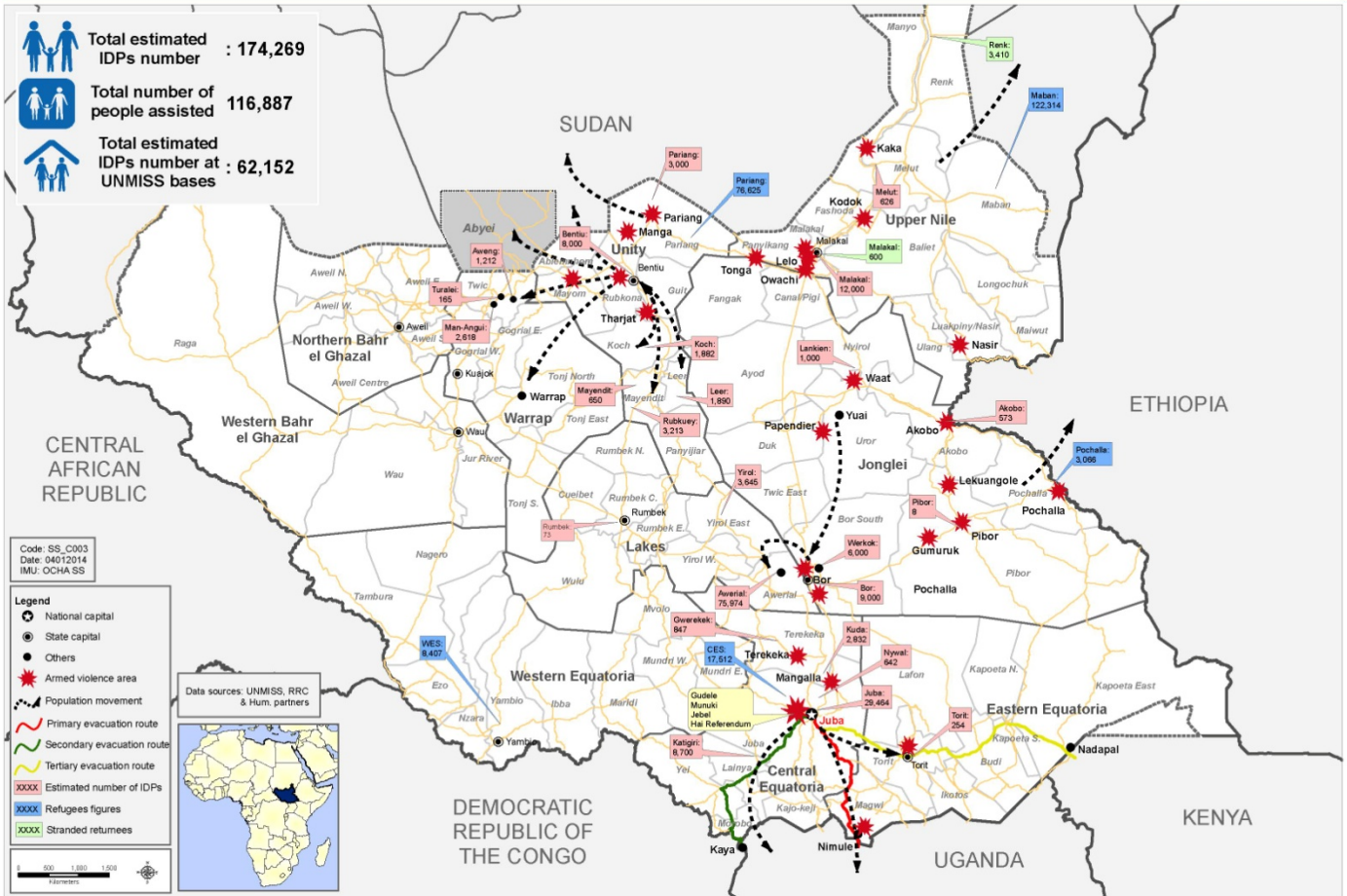
**Contact details :**

Cluster coordinator : Margo Baars Email : [mbaars@iom.int](mailto:mbaars@iom.int)  
 Co coordinator Erisa Yzeiraj: Email: [Erisa-yzeiraj@wvi.org](mailto:Erisa-yzeiraj@wvi.org)

[www.sheltercluster.org](http://www.sheltercluster.org)

Target Groups		Estimated Total Caseload	Emergency Activities (up to 6 weeks – if applicable)	
			Target #HH	Approved Interventions and Standards
Displacement sites	People located in UNMISS bases	90,000 (existing estimate 60,000; possible influx 30,000)	18,000	INT1: Basic NFI distribution including plastic sheets (where framing material is available)
				INT2: Communal shade for dense sites - 6 by 12m tents or longhouses (plastic sheet, poles)
				INT3: Family tents (pending allocation of sufficient space, and where logistics allows)
In community	Informal settlements of internally displaced	310,000	52,000	INT1: Basic NFI distribution
				INT2: Emergency shelter kit - plastic sheets and framing material (locally sourced)
				INT3: Family tents (pending allocation of sufficient space, and where logistics allows)
<b>SUBTOTAL</b>		<b>400,000</b>	<b>70,000</b>	
In community	Host community	-	-	INT1: Basic NFI distribution
				INT2: Emergency shelter kit - plastic sheets and framing material (locally sourced)
				INT3: Family tents (pending allocation of sufficient space, and where logistics allows)
<b>SUBTOTAL</b>		<b>-</b>	<b>5,200</b>	

### South Sudan situation map (as of 04 Jan. 2014, 04:30 PM)



Cluster lead:



IOM International Organization for Migration  
OIM Organisation internationale pour les migrations  
OIM Organización Internacional para las Migraciones

Partners of the Shelter Cluster:

