



# SUDAN SHELTER CLUSTER

Coordinating Humanitarian Shelter and Settlements



Photo © UNHCR/Aymen Alfadil

## Emergency Preparedness and Response Plan Sudan – 2025 Rainy Season *Published: May 2025*

### Overview of High-Severity Flood-Prone Localities

Key Prepositioning Requirement



**59,000**  
Households  
Targeted



**59,000** NFI kits



**14,000**  
Emergency  
Shelters



**15,000**  
Shelter  
Repair Kits



**\$18** Million  
Funding Gap

## Contents

1. Executive Summary .....	3
2. Background and Context.....	5
3. Scope .....	5
4. Objectives .....	5
5. Targeting, Priorities, and Guiding Principles .....	6
6. Phases of Response.....	7
7. Detailed Preparedness and Response Strategy .....	7
a. Mitigation Measures .....	7
b. Early Warning.....	8
c. Response Capacity .....	8
d. Pre-positioning of Shelter and NFI Supplies .....	8
e. Rapid Response Mechanisms .....	8
f. Coordination and Communication .....	8
8. Logistics, Stock, and Funding Requirements.....	9
9. Recovery Phase.....	10
10. Risks and Mitigations .....	10
11. Monitoring and Evaluation.....	10
12. Cost of Inaction .....	11
13. Annexes .....	12
Annex A: High and Medium Flood-Risk Localities and 2024 Rainy Season Impact.....	12
Annex B: Cluster Coordination Map.....	14
Annex C: Partner Preparedness Checklist .....	15

## 1. Executive Summary

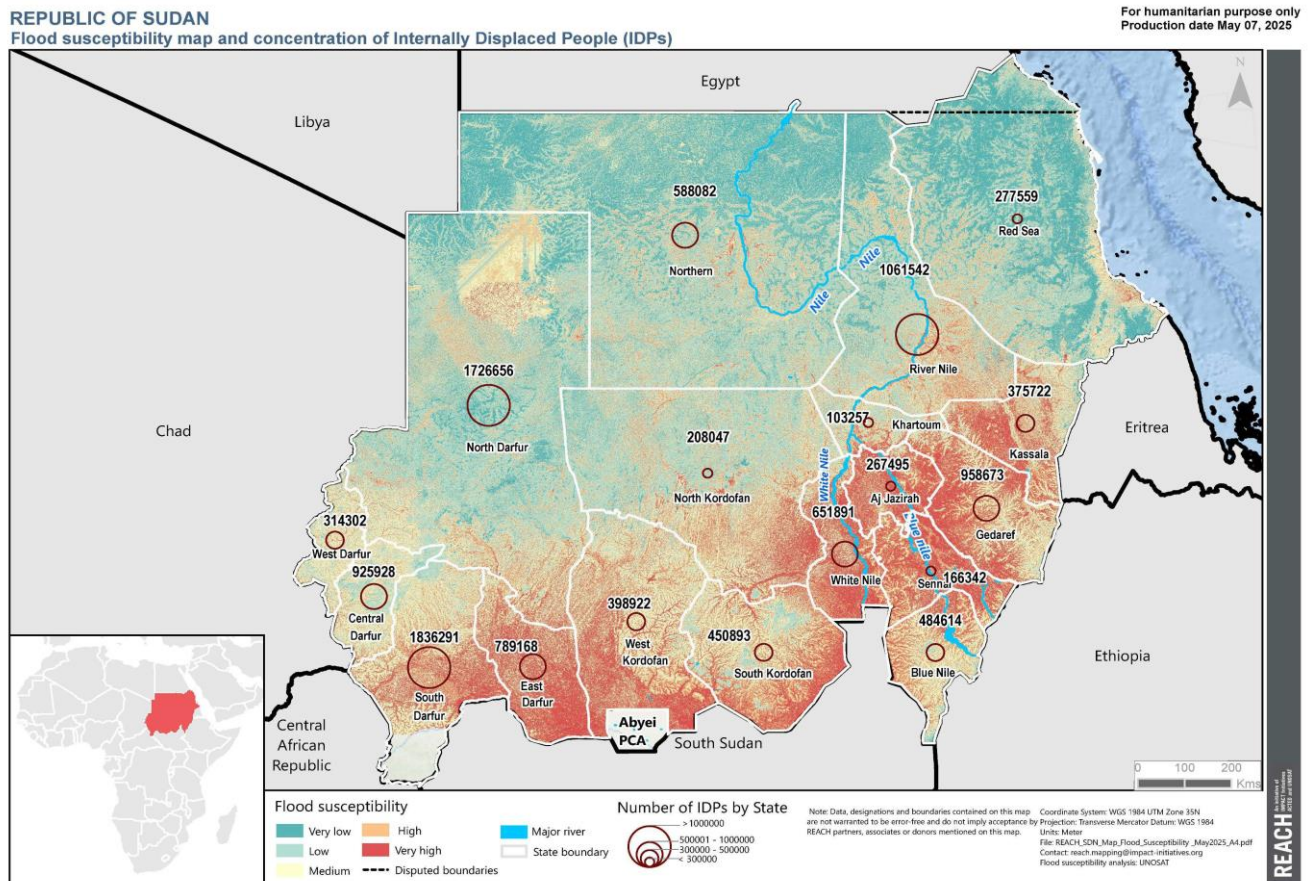
This Emergency Preparedness and Response Plan (EPRP) outlines the strategic approach of the Sudan Shelter and Non-Food Items (NFI) Cluster to mitigate and respond to anticipated seasonal flooding in 2025. The Plan aims to reduce loss of life, human suffering, and displacement by enabling a timely and coordinated response that provides emergency shelter and NFIs to the most vulnerable displaced and at-risk communities.

Building on lessons from past flood responses, the Plan emphasizes:

- Early warning and climate forecasting.
- Pre-positioning of critical supplies.
- Rapid deployment teams.
- Strong community engagement and protection integration.
- Importance of investment in site development, particularly flood mitigation measures.

Additionally, the plan incorporates a comprehensive monitoring and evaluation framework to ensure accountability, inform real-time decision-making, and adapt the response as needed. Through close collaboration with national authorities, humanitarian partners, and local actors, the Shelter and NFI Cluster seeks to strengthen preparedness and build the resilience of flood-prone communities across Sudan.

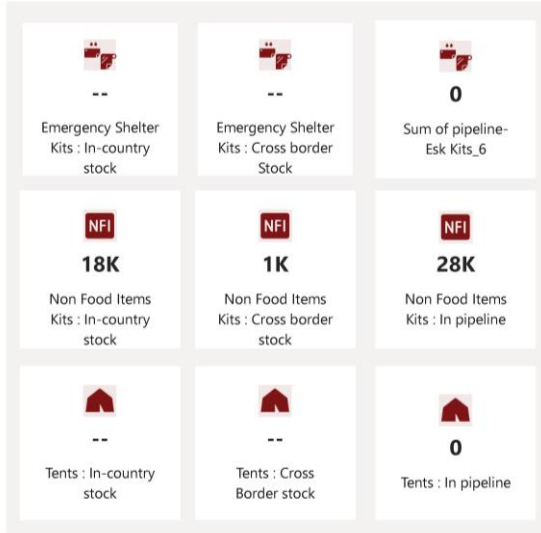
### Map of Flood Susceptibility in Sudan<sup>1</sup>



<sup>1</sup> Further maps at the state level are available [here](#). Flood Susceptibility Analysis and Mapping provided by:

### Current Stock Mapping Summary:<sup>2</sup>

#### Overall figures



#### Items locations

##### STATE LEVEL



##### LOCALITY LEVEL

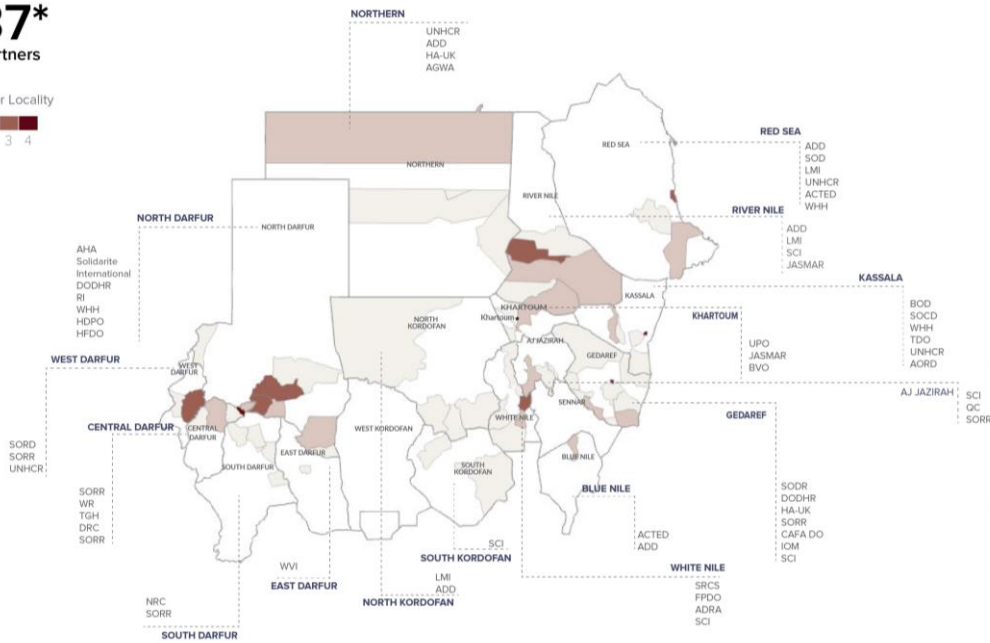


The data, boundaries and names and the designations used on the map do not imply official endorsement or acceptance by Shelter Cluster Sudan.

### Active Partners Presence:

 **37\***  
Partners

#partners per Locality  
0 1 2 3 4



<sup>2</sup> These are as of the end of April 2025; the in-country kits continue to be distributed to address ongoing needs. Meanwhile, a portion of the kits currently in the pipeline is designated for pre-positioning, while more than half are allocated to meet urgent needs, including support for the most vulnerable populations.

A live monthly dashboard is available at [Sudan | Shelter Cluster](https://www.sheltercluster.org/response/sudan).

## 2. Background and Context

Sudan is one of the world's most climate-vulnerable countries, facing recurrent seasonal hazards such as floods and droughts. Flooding events, exacerbated by the El Niño–Southern Oscillation (ENSO), have affected over 800,000 people in 2020, which is the worst flooding in a century, followed by 349,000 in 2022. In 2024 alone, more than 685,000 individuals experienced flood impacts, which destroyed 66,359 houses and damaged an additional 52,109 in 73 localities across 11 states. Beyond the destruction of housing, flood-prone states, including Red Sea, North Darfur, White Nile, Northern, South Darfur, and River Nile, consistently bear the brunt of these events. Flash floods in these areas have repeatedly damaged vital infrastructure, wiped out household assets, and severely disrupted access to essential services. Many affected households rely on basic or makeshift shelters that cannot withstand rapid flooding, compounding their vulnerability and eroding coping mechanisms.

## 3. Scope

This EPRP outlines the operational scope of the Shelter and NFI Cluster's preparedness and response efforts for flood-related emergencies in Sudan. It has been developed through a comprehensive analysis of historical flooding patterns, hazard mapping, and lessons learned from previous emergencies, complemented by extensive consultations with Cluster members.

The plan applies to flood-prone areas across Sudan and focuses on the most likely flood scenarios anticipated during the rainy season. It defines the preparedness and response actions to be undertaken by Cluster partners, including pre-positioning life-saving Shelter and NFI supplies, reinforcement of shelter and essential infrastructure, and activation of contingency protocols to ensure a timely, coordinated, and effective response. Pre-positioning and other preparedness targets have been adjusted to reflect the limited time remaining before the start of the rainy season.

The plan will be activated when flooding causes, or is likely to cause, displacement, destruction of shelters, or loss of essential household items, among other significant humanitarian consequences. It encompasses in-kind, cash, and voucher modalities of assistance, and promotes, where feasible, the use of Cash-Based Interventions (CBIs) in line with the [Cluster's Cash and Voucher Assistance \(CVA\) guidelines](#). A "why-not-cash" approach is encouraged, requiring partners to assess the feasibility and appropriateness of CBIs within their operational contexts.

By defining these parameters, this plan ensures clarity on the roles, responsibilities, and actions expected of Shelter and NFI Cluster partners before, during, and after flood-related emergencies.

## 4. Objectives

The primary objective of this Flood Preparedness and Emergency Response Plan is to enable a timely, coordinated, and effective Shelter and NFI response to flood-related emergencies in Sudan. The plan aims to reduce human suffering, safeguard dignity, and build the resilience of flood-affected communities through the following strategic objectives:

- **Enhance Preparedness:** Strengthen the readiness of vulnerable communities and response actors to mitigate the impacts of flooding, displacement, and disruption of basic services.
- **Minimize Humanitarian Impact:** Deliver prompt and appropriate emergency shelter and NFI assistance to reduce vulnerability, prevent further displacement, and uphold the dignity and safety of affected populations.
- **Strengthen Coordination:** Foster effective coordination among government institutions, UN agencies, and NGOs, while ensuring the integration of protection and gender-sensitive programming.

- **Optimize Resource Allocation and Preparedness Measures:** Maintain updated shelter and NFI stock inventories, conduct gap analyses, and align funding proposals with priority needs to ensure strategic deployment of limited resources.

## 5. Targeting, Priorities, and Guiding Principles

Needs assessments are a critical component for informing an effective and targeted response. Utilizing multi-sectoral assessment tools or organization-specific questionnaires that adequately capture Shelter and NFI-related needs is essential. To enable real-time data collection and support timely, evidence-based decision-making, partners are encouraged to use digital tools such as KoboToolbox for mobile-based rapid assessments where feasible. These tools should incorporate the collection of disaggregated data, including age, gender, and specific vulnerability markers, to ensure responses are inclusive and protection-sensitive. Additional guidance on real-time data collection is provided in Section 7 of this plan.

### a. Targeting and Prioritization

Given constrained resources and operational challenges, targeting and prioritization<sup>3</sup> will be based on a protection-sensitive and evidence-based approach, ensuring that assistance reaches those in greatest need. Key considerations include:

- **Protection Risks:** Particular focus will be placed on women, children, the elderly, and persons with disabilities. Targeting will be informed by protection risk analyses to mitigate harm and support those facing heightened vulnerabilities.
- **Physical barriers:** Priority will be given to affected populations exposed to life-threatening conditions such as living in flood-prone or waterlogged areas. Households with fully destroyed shelters will be prioritized, followed by those with partially damaged homes.
- **Economic barriers:** Households lacking the financial means, land tenure, or access to construction materials necessary for self-recovery will be prioritized.
- **Other vulnerabilities:** Priority assistance will be extended to persons with specific needs, including female-headed households, child-headed households, persons with chronic illnesses or disabilities, and households without support networks.

### b. Preparedness and Response Priorities

To maximize impact and ensure a principled and efficient response, the Cluster will focus on the following priorities:

- **Prioritize Flood Mitigation Measures:** Support flood-resilient shelter designs and site Flood Mitigation Measures such as drainage, elevation, and barriers to reduce displacement risks and enhance community resilience.
- **Target High-Risk Flood Zones:** Prioritize early prepositioning and interventions in severely affected areas with recent or ongoing flooding and displacement, including Red Sea, North Darfur, White Nile, and other high-risk states as identified through risk mapping.
- **Close Funding Gaps:** Advocate for increased and timely donor support through platforms such as the Sudan Humanitarian Fund (SHF) and other donors, while aligning proposals with assessed needs and gaps.
- **Maximize use of Data:** Improve use of real-time data and analysis through mechanisms such as the Displacement Tracking Matrix (DTM) and partner reports to inform evidence-based decision-making.

---

<sup>3</sup> Detailed guidance available at [Shelter and NFI Cluster Sudan - Vulnerability Targeting Criteria | Shelter Cluster](#)

- **Empower Local Communities:** Promote meaningful community engagement in all phases of the response, including site planning, beneficiary selection, and feedback and complaints mechanisms to ensure culturally appropriate and inclusive programming.

**c. Guiding Principles**

All preparedness and response efforts under this plan are grounded in the following principles:

- **Humanitarian Principles:** Uphold the principles of humanity, neutrality, impartiality, and operational independence in all aspects of the response.
- **Timeliness and Flexibility:** Ensure rapid deployment of assistance while adapting to shifting needs and conditions on the ground.
- **Transparency and Accountability:** Promote clear communication, responsible management of resources, and transparency in decision-making, funding allocation, and implementation processes.
- **Centrality of Protection:** Embed protection at the core of the response. Actions must aim to safeguard the rights, safety, dignity, and well-being of all affected populations, particularly the most vulnerable, and must be informed by their capacities, perspectives, and priorities.
- **Environmental Responsibility:** Integrate environmentally sustainable practices into shelter and site development interventions to reduce environmental degradation and avoid compounding vulnerabilities, guided by the Global Shelter Cluster Guide on Disaster Risk Reduction (DRR) Mainstreaming in Humanitarian Shelter and Settlement Interventions<sup>4</sup>.
- **Coordination and Collaboration:** Strengthen partnerships across all levels, national authorities, UN agencies, international and local NGOs to ensure coherence, avoid duplication, and maximize the efficiency of the response. Promote complementarity with other clusters to achieve greater impact.

**6. Phases of Response**

The Shelter and NFI Cluster will implement a phased approach to ensure a timely and coherent response at both national and sub-national levels. A checklist was developed in [Annex C](#) to ensure partners' preparedness.

Phase	Timeframe	Key Activities	Lead Responsibility
Preparedness	Before the emergency	<ul style="list-style-type: none"> <li>▪ Prepositioning, training, flood mitigation measures, etc.</li> </ul>	Partners, Cluster Coordination Team
Emergency Response	0–72 hours	<ul style="list-style-type: none"> <li>▪ Activate the EPRP, deploy rapid needs assessments, and coordinate partners</li> </ul>	National & Sub-National Clusters
	72 hours – 8 weeks	<ul style="list-style-type: none"> <li>▪ Distribute emergency shelter and NFI kits, issue situation reports, update HCT/HC, and conduct PDM</li> </ul>	Partners, Cluster Coordination Team
Transition/ Recovery	2+ months <sup>5</sup>	<ul style="list-style-type: none"> <li>▪ Support transitional shelters, initiate house rehabilitation or reconstruction, and further DRR activities</li> </ul>	Partners, Development Partners

**7. Detailed Preparedness and Response Strategy**

This strategy outlines the core components of the Shelter and NFI Cluster's operational approach to preparing for and responding to flood-related emergencies across Sudan.

**a. Mitigation Measures**

- **Flood Mitigation Measures:** Invest in simple, cost-effective flood mitigation interventions such as sandbagging, elevation of shelter platforms, site drainage improvement, and installation of protective barriers to reduce exposure and enhance community resilience.

<sup>4</sup> Global Shelter Cluster. (2024). *Entry Points for Mainstreaming Disaster Risk Reduction in Humanitarian Shelter and Settlement Programming*, <https://sheltercluster.org/environment-community-practice/documents/entry-points-drr-mainstreaming-humanitarian-shelter-and>

<sup>5</sup> Or once emergency needs are met.



## SUDAN SHELTER CLUSTER

Coordinating Humanitarian Shelter and Settlements

### b. Early Warning

- **Forecasting and Alerts:** Work in close coordination with the Sudan Meteorological Authority, hydrological institutions, and humanitarian partners either directly or through the joint Inter-Cluster Coordination Group efforts to monitor rainfall intensity, flood risk zones, and climate patterns. Ensure that early warnings are translated into actionable alerts for Cluster partners and local responders. The development of regional thresholds will be coordinated with relevant stakeholders in the field to ensure relevance and operational feasibility.
- **Real-Time Data Collection:** Leverage systems such as the DTM, community-based monitoring tools, and other information to collect and analyze real-time data on population displacement, shelter damage, and humanitarian needs. This will inform timely decision-making and prioritization.

### c. Response Capacity

- **Capacity Mapping:** Continuously update mapping of partner presence, operational capacity, trained personnel, stockpiles, and warehousing locations to identify strengths and address capacity gaps at national and sub-national levels. A specific checklist was reflected in Annex C to ensure partners' preparedness.
- **Community Awareness and Technical Support:** Conduct public awareness campaigns on flood preparedness, household-level mitigation, and safe shelter practices. Provide technical guidance to community members on shelter strengthening and DRR.
- **Training and Capacity Strengthening:** Organize refresher training for Cluster partners and local responders on emergency preparedness, rapid needs assessment, standards, CVA, and early warning monitoring.

### d. Pre-positioning of Shelter and NFI Supplies

- **Strategic Stockpiling:** Identify and secure warehouse space in geographically strategic and low-risk areas across Sudan. Pre-position core relief items, including Emergency Shelter Kits (ESKs), tents, household NFI kits, shelter repair kits, or standalone items such as plastic sheeting.
- **Inventory Management and Accountability:** Establish a centralized, real-time inventory tracking system for Cluster partners. This system will ensure visibility on available stocks, improve efficiency in dispatching supplies, and enhance transparency and accountability in the use of resources. Periodic stock audits will be planned on a bi-monthly basis to ensure accurate, up-to-date tracking of available supplies.

### e. Rapid Response Mechanisms

- **Mobilization Teams:** Establish and maintain trained, equipped, and geographically distributed emergency shelter response teams. These teams should be capable of rapid needs assessment, coordination, and distribution within 24–72 hours of a flooding event. These can support cluster response in addition to the emergency rapid response mechanisms facilitated by SCI and SI.
- **Transport and Logistics:** Ensure partners develop pre-arranged logistics frameworks, including long-term agreements with transportation service providers and contingency fuel reserves, to enable the timely movement of pre-positioned supplies.
- **Adapt Flexible Modalities:** Incorporate flexible cash and voucher modalities where markets are functioning and accessible, based on feasibility assessments in alignment with the cluster CVA guidelines.
- **Community-Based Engagement:** Mobilize and train local community volunteers to support distribution, site planning, crowd control, and first-line response. Community-based involvement ensures faster mobilization, improves local ownership, and enhances cultural appropriateness.

### f. Coordination and Communication

- **Cluster Coordination:** Activate an emergency task force, conducting more frequent meetings.
- **Situation Reporting:** Prepare regular situation updates, including weekly or bi-weekly flood monitoring reports, to inform Cluster members, donors, and authorities about the evolving situation, needs, and gaps.
- **Advocacy:** Actively advocate for the mobilization of adequate financial, human, and logistical resources to support Cluster preparedness and response activities. Ensure clear communication with donors about funding gaps, priorities, and urgent needs.

## 8. Logistics, Stock, and Funding Requirements

The table below summarizes the projected targets, current stock levels, identified gaps, and estimated funding requirements for the Shelter and NFI cluster.

### High Severity Localities

Response/ Action	Preparedness	Unit Cost (USD)	Available Resources (kits/for HHs) <sup>6</sup>	Projected Needs (HHs)	Gaps	Gap (USD)
NFI Kits		\$200	10,000	59,000	49,000	\$9,800,000
Emergency Shelter (kit/tent, communal)		\$400 <sup>7</sup>	0	14,000	14,000	\$5,600,000
Shelter Repair Kits		\$150	2,750 <sup>8</sup>	15,000	12,250	\$1,837,500
<b>Total</b>						<b>\$17,237,500</b>
Rental Support (3 months)		\$400	0	1,260	1,260	\$504,000
Flood Mitigation Measures		\$2,500	0	225	225	\$562,500
Training <sup>9</sup>		\$130	0	528	528	\$68,640
<b>Total</b>						<b>\$1,135,140</b>
<b>Grand Total</b>						<b>\$18,372,640</b>

### Medium Severity Localities

Response/ Action	Preparedness	Unit Cost (USD)	Available Resources (kits/for HHs)	Projected Needs (HHs)	Gaps	Gap (USD)
NFI Kits		\$200		68,000	68,000	\$13,600,000
Emergency Shelter (kit/tent, communal)		\$400		10,000	10,000	\$4,000,000
Shelter Repair Kits		\$150		10,000	10,000	\$1,500,000
<b>Total</b>						<b>\$19,100,000</b>
Rental Support (3 months)		\$400		500	500	\$200,000
Flood Mitigation Measures		\$2,500		200	200	\$500,000
Training		\$130		200	200	\$26,000
<b>Total</b>						<b>\$726,000</b>
<b>Grand Total</b>						<b>\$19,826,000</b>

<sup>6</sup> These resources are currently in the pipeline. Once received, they will be pre-positioned in anticipation of the flood emergency. However, they may also be rapidly deployed to address emerging needs related to conflict, fire, evictions, or other urgent situations. This flexibility, while necessary, could further widen the resource gaps identified in this plan.

<sup>7</sup> This is the average cost of a basic emergency shelter with partners' operational and support costs: often kits range from \$220 to \$650, while tents range from \$400 to \$500.

<sup>8</sup> These are partial kits consisting of 5,500 plastic sheets. A complete kit typically includes, in addition to plastic sheets, essential items such as ropes, locally sourced repair materials for roofing and walling, and nails. Sandbags can be included if needed.

<sup>9</sup> This includes a) Training local community volunteers to support distribution, site planning, crowd management, and immediate response efforts. b) Building the capacity of Cluster partners and local responders through training on emergency preparedness, rapid needs assessments, emergency shelter standards, cash and voucher assistance (CVA) modalities, and early warning systems. c) Conducting public awareness campaigns on flood preparedness, household-level mitigation, and safe shelter practices, alongside providing technical guidance on shelter strengthening and disaster risk reduction (DRR).

## 9. Recovery Phase

The transition from emergency to recovery focuses on resilience and sustainability with key activities include:

- **Shelter Repair:** Implement standardized, cost-effective repairs based on Bills of Quantities (BoQs) for partially damaged shelters.
- **Transitional Shelter:** Provide durable and upgradeable shelters for those who have lost their homes.
- **House Rehabilitation:** Support rehabilitation of damaged homes, prioritizing the most vulnerable.
- **Capacity Building:** Offer technical guidance on safe, flood-resistant construction practices.
- **Coordination:** Collaborate with other sectors and recovery or development actors to align efforts with long-term recovery and development goals.

## 10. Risks and Mitigations

Risks	Mitigations
1. Inadequate Funding	Strong donor advocacy, regular dashboards, coordinated appeals.
2. Exclusion of affected communities without National Identification documents.	Coordination with the Protection Cluster for temporary IDs or alternative mechanisms.
3. Access Restrictions	Flexible response plans; engage local actors for remote implementation. In areas where roads are cut off during rain, preposition stocks in flood-prone areas before rains; use local partners and a standby airbridge.
4. Logistical and Market Disruptions	Diversify supply chains, pre-position stocks, and regional procurement, and regularly assess local market functionality.
5. Data Gaps and Monitoring Limitations	Coordinate with IOM DTM and other data partners for real-time monitoring and deploy mobile assessment teams with rapid data collection tools.
6. Delayed procurement and delivery timelines	Preposition supplies early based on forecasts; streamline procurement with LTAs.
7. Inadequate storage infrastructure	Liaise with the Logistics cluster for secure, weatherproof warehouses near high-risk areas.
8. Market disruption during the rainy season	Use in-kind assistance where markets are unreliable; preposition key items in advance.
9. Limited investment in site-level flood mitigation	Prioritize DRR funding for site improvements like drainage, elevation, and barriers.

## 11. Monitoring and Evaluation

The Shelter and NFI Cluster will implement a robust monitoring and evaluation (M&E) framework to ensure that flood preparedness and emergency response activities are timely, effective, and accountable. The framework integrates real-time monitoring, partner reporting tools, post-response analysis, and feedback mechanisms to improve performance and inform future responses. An example of monitoring plan can be found in WWF Natural and Nature-Based Flood Management Green Guide page 31<sup>10</sup>.

Element	Description
<b>Performance Indicators</b>	<p>The Cluster will monitor key indicators such as:</p> <ul style="list-style-type: none"> <li>• Stock availability and utilization</li> <li>• Response timeliness (e.g., time between request and delivery)</li> <li>• Beneficiary satisfaction (through Post-Distribution Monitoring)</li> <li>• Efficiency of delivery (cost vs. reach and timeliness)</li> </ul>

<sup>10</sup> World Wildlife Fund (WWF). (2021). *Natural and Nature-Based Flood Management: A Green Guide*, <https://www.worldwildlife.org/publications/natural-and-nature-based-flood-management-a-green-guide>

<b>Reporting Tools</b>	<ul style="list-style-type: none"> <li>• 5Ws Reports (monthly): Track completed partner activities, beneficiaries reached, and response coverage.</li> <li>• 4Ws Reports (planning stage): Identify planned interventions, actors involved, and geographic targets.</li> <li>• Situation Reports: Issued during emergencies to provide real-time updates on response status, gaps, and needs.</li> </ul>
<b>Resource and Stock Tracking</b>	<ul style="list-style-type: none"> <li>• Resource Management System: Tracks stock levels and movement of shelter and NFI items.</li> <li>• Fund Mapping System: Monitors financial contributions and projects across the Cluster.</li> <li>• Flood Tracking System: Records flood-affected areas, shelter/NFI needs, and response progress.</li> </ul>
<b>Forecasting and Early Warning</b>	<ul style="list-style-type: none"> <li>• In partnership with the Sudan Meteorological Authority and humanitarian actors, the Cluster monitors rainfall forecasts and potential flood alerts. Collaboration with global and regional forecasting systems helps anticipate flood events and activate preparedness measures early.</li> </ul>
<b>Feedback and Learning</b>	<ul style="list-style-type: none"> <li>• Post-Distribution Monitoring (PDM)<sup>11</sup>: Collects feedback from beneficiaries on the quality and appropriateness of assistance.</li> <li>• Lessons Learned Exercises: Conducted after major flood responses to revise contingency plans and response protocols.</li> <li>• Community Feedback Mechanisms: Integrated through partners' hotlines, complaint desks, and field visits.</li> </ul>

## 12. Cost of Inaction

Failure to act on emergency preparedness and response actions could have devastating, life-threatening consequences for over 127,000 households living in flood-risk areas exposed to heavy rainfall and flooding during the upcoming rainy season. Flooding in Sudan has consistently led to high mortality rates, widespread destruction of shelters, mass displacement, and extensive damage to community infrastructure. In 2024 alone, floods claimed the lives of at least 97 people, injured 112, and affected more than 685,000 individuals across multiple states. This included the destruction of over 66,359 houses and damage to an additional 52,109, leaving tens of thousands without safe or dignified shelter.

If preparedness measures such as pre-positioning shelter and NFI supplies, reinforcing flood-prone sites, and activating early response mechanisms are not urgently implemented, thousands more will face avoidable displacement, disease exposure, and heightened protection risks. Experience from Sudan and other contexts has consistently shown that investing in preparedness significantly reduces both human suffering and economic losses. Areas with contingency planning, flood mitigation infrastructure, and available stock experience fewer impacts and recover more quickly. Strengthening early action systems and local response capacity not only saves lives, but also protects assets, reduces emergency response and recovery costs, and safeguards livelihoods. For every US\$1 spent on disaster reduction saves US\$4 to US\$7 in disaster response<sup>12</sup>. In Sudan's current crisis, preparedness is not just strategic, it is a humanitarian and economic imperative.

<sup>11</sup> The Sudan Shelter and NFI Cluster has a dedicated PDM tool available at [Post Distribution Monitoring Questionnaire - Offline Version | Shelter Cluster](#) along with accompanying guidance for a common approach to PDM, accessible at [Shelter & NFI Cluster Sudan - PDM Guidance for a Common Approach | Shelter Cluster](#)

<sup>12</sup> United Nations Office for Disaster Risk Reduction (UNDRR) & Economist Impact. (2022). *Building Disaster Resilience: A Study of Disaster Events and Financial Lending Streams*. <https://www.undrr.org/publication/building-disaster-resilience-study-disaster-events-and-financial-lending-streams>

### 13. Annexes

#### Annex A: High and Medium Flood-Risk Localities and 2024 Rainy Season Impact<sup>13</sup>

State	Locality	Flood-risk Severity <sup>14</sup>	Impact of 2024 Flooding <sup>15</sup>			
			People Affected	HHs Affected	Houses Destroyed	Houses Damaged
Red Sea	Tawkar	High	102,525	20,500	20,500	-
River Nile	Abu Hamad	High	57,765	11,526	11,237	289
South Darfur	Ed Al Fursan	Medium	51,420	8,570	1,050	7,520
Red Sea	Al Ganab	Medium	50,000	10,000	-	-
North Darfur	Kutum	Medium	35,570	7,114	3,562	3,542
White Nile	Guli	High	34,552	6,798	4,090	2,708
North Darfur	Kebkabiya	Medium	34,160	3,731	630	6,202
Central Darfur	Bendasi	Medium	32,549	6,509	2,382	4,127
North Darfur	Al Fasher	Medium	24,625	4,725	2,446	2,628
Northern	Merwoe	High	22,615	2,880	2,469	2,050
White Nile	As Salam / Ar Rawat	High	16,800	3,360	1,933	1,427
White Nile	Kosti	High	16,190	2,327	1,108	1,193
Red Sea	Port Sudan	Medium	15,243	3,048	230	32
White Nile	Tendalti	High	13,127	449	212	237
Northern	Dongola	Medium	13,065	2,594	137	2,457
West Darfur	Foro Baranga	Medium	12,240	2,448	1,845	603
Northern	Halfa	Medium	10,937	2,187	813	1,373
Northern	Al Burgaig	Medium	10,670	1,708	1,066	1,062
North Darfur	Al Koma	Medium	10,155	1,876	1,253	778
South Darfur	Rehaid Albirdi	Medium	9,525	1,906	119	1,787
White Nile	Rabak	High	9,255	3,264	1,623	859
Kassala	Madeinat Kassala	High	9,106	1,708	-	213
West Darfur	Ag Geneina	Medium	8,485	1,697	985	712
North Darfur	Tawila	Medium	8,225	108	108	1,537
Central Darfur	Azum	Medium	5,990	1,198	176	687
Aj Jazirah	Al Qurashi	High	5,050	956	54	-
Kassala	Reifi Aroma	High	4,590	915	664	-
Northern	Ad Dabbah	Medium	4,547	904	77	827
Northern	Al Golid	Medium	4,440	888	34	289
South Darfur	Um Dafoug	High	4,350	870	570	300
North Kordofan	Soudari	Medium	4,350	870	570	570
West Darfur	Kulbus	Medium	3,835	453	183	554
White Nile	Al Gitaina	High	3,612	690	294	346
West Darfur	Kereneik	Medium	3,485	697	316	353
Blue Nile	Ar Rusayris	High	2,855	571	-	-

<sup>13</sup> Full table with targets is available at <https://sheltercluster.org/sudan/documents/flood-emergency-preparedness-and-response-plan-analysis-2025>

<sup>14</sup> Provided by REACH and adjusted based on impact of 2024 flood impact.

<sup>15</sup> Extracted from OCHA's flood tracking matrix



# SUDAN SHELTER CLUSTER

Coordinating Humanitarian Shelter and Settlements

State	Locality	Flood-risk Severity <sup>14</sup>	Impact of 2024 Flooding <sup>15</sup>			
			People Affected	HHs Affected	Houses Destroyed	Houses Damaged
North Darfur	Saraf Omra	Medium	2,830	566	66	500
North Darfur	Dar As Salam	Medium	2,785	557	517	640
Red Sea	Agig	Medium	2,525	505	155	350
North Darfur	Al Malha	Medium	2,135	427	202	225
Aj Jazirah	Al Manaqil	High	2,045	330	113	316
White Nile	Aj Jabalain	High	2,016	90	309	94
West Kordofan	Wad Bandah	Medium	2,000	400	200	200
Northern	Delgo	Medium	1,920	384	159	225
East Darfur	Ad Du'ayn	High	1,745	349	249	100
Central Darfur	Gharb Jabal Marrah	Medium	1,725	345	130	215
Gedaref	Al Mafaza	High	1,662	307	-	289
East Darfur	Al Firdous	High	1,328	265	265	-
North Darfur	At Tina	Medium	1,260	131	122	130
North Kordofan	Um Rawaba	High	1,235	247	10	237
Khartoum	Sharg An Neel	Medium	1,235	247	-	237
South Darfur	Al Wihda	Medium	1,185	237	142	95
Red Sea	Jubayt Elma'aadin	Medium	1,170	234	73	161
River Nile	Shendi	Medium	1,140	228	136	92
Kassala	Reifi Gharb Kassala	High	1,072	192	-	-
Gedaref	Al Fao	High	1,000	200	50	150
South Darfur	Tulus	High	1,000	200	50	150
North Darfur	Kernoi	Medium	905	161	117	64
Central Darfur	Wadi Salih	Medium	800	160	43	117
East Darfur	Yassin	High	685	137	137	-
East Darfur	Bahr Al Arab	High	515	103	103	-
Red Sea	Hala'ib	Medium	455	91	91	-
North Darfur	Um Kadadah	Medium	425	85	17	68
North Darfur	As Serief	Medium	395	22	22	57
North Darfur	Um Baru	Medium	385	77	38	39
White Nile	Ad Diwaim	High	330	66	21	45
Kassala	Reifi Kassla	High	325	62	-	-
East Darfur	Assalaya	High	170	34	34	-
West Darfur	Sirba	Medium	100	20	20	44
West Darfur	Beida	Medium	85	17	17	4
River Nile	Al Matama	Medium	55	11	8	3
North Kordofan	Sheikan	Medium	52	-	-	-
Khartoum	Bahri	Medium	45	9	-	-
Central Darfur	Shamal Jabal Marrah	Medium	35	7	7	-



# SUDAN SHELTER CLUSTER

Coordinating Humanitarian Shelter and Settlements

## Annex B: Cluster Coordination Map



## SHELTER AND NFI CLUSTER COORDINATION STRUCTURE MAP (as of 05 March 2025)

### National Cluster Coordination Team

#### MONIR AL-SOBARI

National Cluster Coordinator  
alsobari@shcl.org

#### VINCENT OKELLO

Cluster Co-Chief  
vincenzokello@sheltercluster.org

#### KADJO MODESTE KOOUSSI

Information Management  
koo@shcl.org

### NORTHERN

DENG JOHN MAJOK KUIR  
kui@shcl.org  
TEL: +249 009934286  
+249 100714511

### Sub-National Coordination Team

#### RED SEA

HAI IHAM ABDEL RAHMAN  
ibdelrah@shcl.org  
TFI: +249026921269  
+24912284412  
NOURAN YDI HIA  
yhd@shcl.org  
TEL: +249 902283726

#### NORTH DARFUR

AHMED IBRAHIM  
ibrahim@shcl.org  
TEL: +249 912148078  
MOHAMED SEYAM  
seyam@shcl.org  
TEL: +249 12 217 7296

#### WEST DARFUR

MONTASER ABDALLA EISA OSMAN  
osmani@shcl.org  
TEL: +249 918316678  
MOHAMED SEYAM  
seyam@shcl.org  
TEL: +249 12 217 7296

#### CENTRAL DARFUR

MONTASER ABDALLA EISA OSMAN  
osmani@shcl.org  
TFI: +249 918316678  
MOHAMED SEYAM  
seyam@shcl.org  
TEL: +249 12 217 7296

#### SOUTH DARFUR

SALIH GANI  
ganis@shcl.org  
TEL: +249 902502090  
MOHAMED SEYAM  
seyam@shcl.org  
TEL: +249 12 217 7296

#### OSAM OSMAN IDRIS SULEIMAN

suleimao@shcl.org  
TEL: +249 917602234  
MOHAMED SEYAM  
seyam@shcl.org  
TEL: +249 12 217 7296

#### MOHAMED SEYAM

seyam@shcl.org  
TEL: +249 12 217 7296

#### MOHAMED SEYAM

seyam@shcl.org  
TEL: +249 12 217 7296

#### MOHAMED SEYAM

seyam@shcl.org  
TEL: +249 12 217 7296

#### MOHAMED SEYAM

seyam@shcl.org  
TEL: +279 10019393

#### KASSALA

MOHAMED AHMED MATOK  
matoko@shcl.org  
TFI: +249 91 215 8270  
JEAN CLAUDE BARASHYKIRANA  
barashy@shcl.org  
TEL: +2490284860

#### GEDAREF

JEAN PIERRE TUYISHIME  
tuyishim@shcl.org  
TEL: +24991253453  
+24910014414

#### MOHAMED OSMAN

osman@shcl.org  
TEL: +249 91 811 9538

#### MOHAMED OSMAN

osman@shcl.org  
TEL: +249 91 811 9538

#### MOHAMED OSMAN

osman@shcl.org  
TEL: +249 91 811 9538

#### MOHAMED OSMAN

osman@shcl.org  
TEL: +249 91 811 9538

#### MOHAMED OSMAN

osman@shcl.org  
TEL: +249 91 811 9538

#### MOHAMED OSMAN

osman@shcl.org  
TEL: +249 91 811 9538

#### MOHAMED OSMAN

osman@shcl.org  
TEL: +249 91 811 9538

#### MOHAMED OSMAN

osman@shcl.org  
TEL: +249 91 811 9538

#### MOHAMED OSMAN

osman@shcl.org  
TEL: +249 91 811 9538

#### MOHAMED OSMAN

osman@shcl.org  
TEL: +249 91 811 9538

#### MOHAMED OSMAN

osman@shcl.org  
TEL: +249 91 811 9538

#### MOHAMED OSMAN

osman@shcl.org  
TEL: +249 91 811 9538

Creation date: 05 Mar 2024 Sources: SNFI Cluster Feedback: nusada@shcl.org

The boundaries and names shown and the designations used on this map do not imply official endorsement or acceptance by the United Nations.

## Annex C: Partner Preparedness Checklist

### Phase 1: BEFORE the Emergency (Preparedness Phase)

Preparedness Area	Key Action Items	Status <sup>16</sup>
Coordination and Planning	Partner attended recent Cluster meetings (national or sub-national)	
	Emergency focal point designated and reachable	
	Partner is receiving and monitoring early warning alerts (rainfall/flood)	
	Partner SOPs and emergency response protocols reviewed and updated	
Logistics and Stock Readiness	Shelter and NFI items prepositioned in or near flood-prone areas	
	Access to secure, weatherproof storage facilities	
	Emergency transport and delivery options identified or contracted	
	Inventory tracking system is active and regularly updated	
Capacity and Training	Emergency response team identified and trained on shelter and CVA	
	Community volunteers mobilized and trained in registration, crowd control, distribution, etc.	
Risk Reduction and Site Preparedness	Flood mitigation measures (e.g., sandbags, drainage, barriers) are planned and implemented at high-risk sites	
	Safe and accessible distribution points identified and prepared	
Financial and Programmatic Readiness	Emergency funds secured or accessible	
	Capacity to deliver CVA where feasible (agreements, risk analysis in place)	

### Phase 2: DURING the Emergency (Response Phase)

Response Area	Key Action Items	Status
Coordination and Information Sharing	Attending cluster emergency coordination meetings	
	Submitting real-time updates, rapid assessments, and 5Ws	
Rapid Response Operations	Activation of distribution teams and community volunteers	
	Safe, dignified distribution of Shelter and NFI kits following Sphere standards	
	Emergency CVA disbursed to eligible households where appropriate	
Protection and Accountability	Complaints and feedback mechanisms operational at distribution sites	
	Priority targeting of vulnerable groups (women, elderly, PWD, FHH)	

### Phase 3: AFTER the Emergency (Recovery Phase)

Recovery Area	Key Action Items	Status
Monitoring and Evaluation	Post-distribution monitoring conducted and reported to the Cluster	
	Lessons learned are documented and shared	
	Participation in after-action reviews	
Transition and Resilience Building	Identification and implementation of recovery response	
	Technical support is provided to households for safe reconstruction	
	Advocacy for DRR integration into longer-term recovery plans	

<sup>16</sup> Status can be Yes/No/In-progress