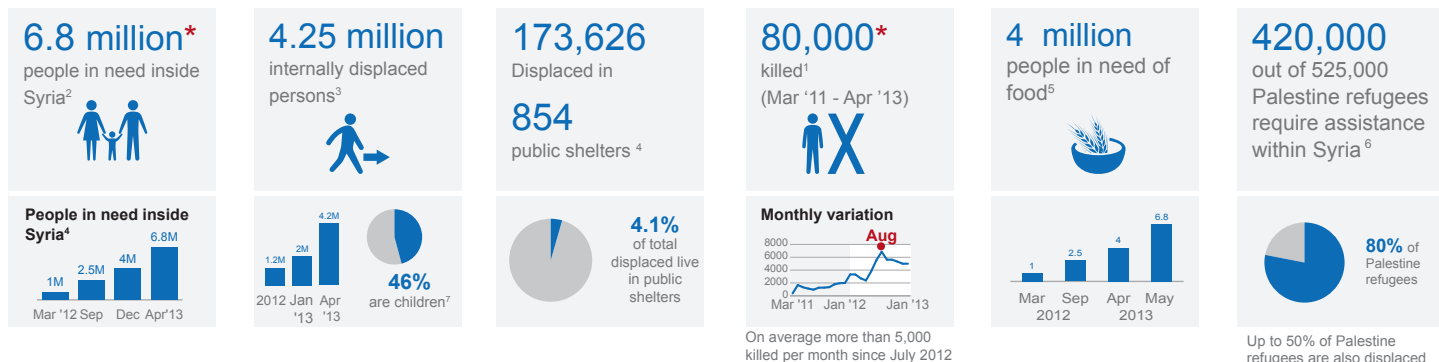


SITUATION OVERVIEW

An estimated 6.8 million people are in need of humanitarian assistance. This includes 4.25 million internally displaced persons. People have increasingly limited access to basic services, including health care, water and sanitation. There is also a critical lack of supplies of life-saving medicines and medical equipment. Access to food and fuel is limited in many areas, and prices are prohibitive for poor people.

More than 80,000 people have been killed since the onset of the crisis in March 2011, with an average of more than 5,000 killed per month since July 2012¹. Power outages impact the provision of water. Lack of safe water and accumulation of garbage in areas affected by the violence, or housing internally displaced people, significantly increases public health risks, especially during summer.

KEY FIGURES (as compiled by UN agencies)

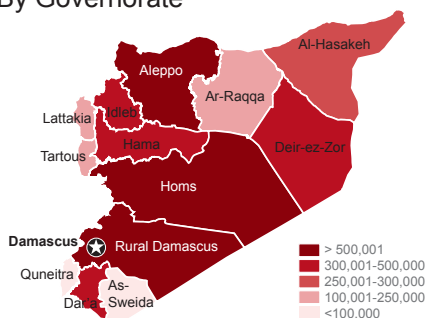


* The government of Syria contests these figures as largely inflated

PEOPLE IN NEED



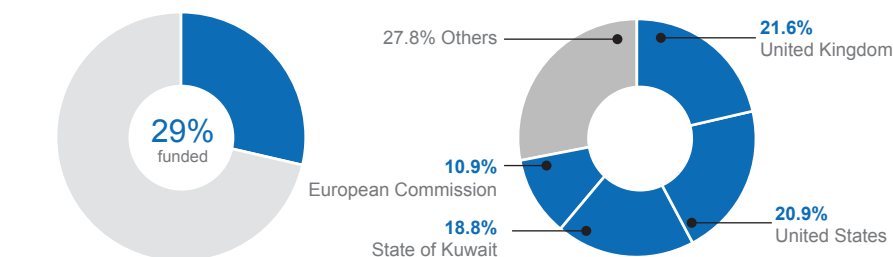
By Governorate



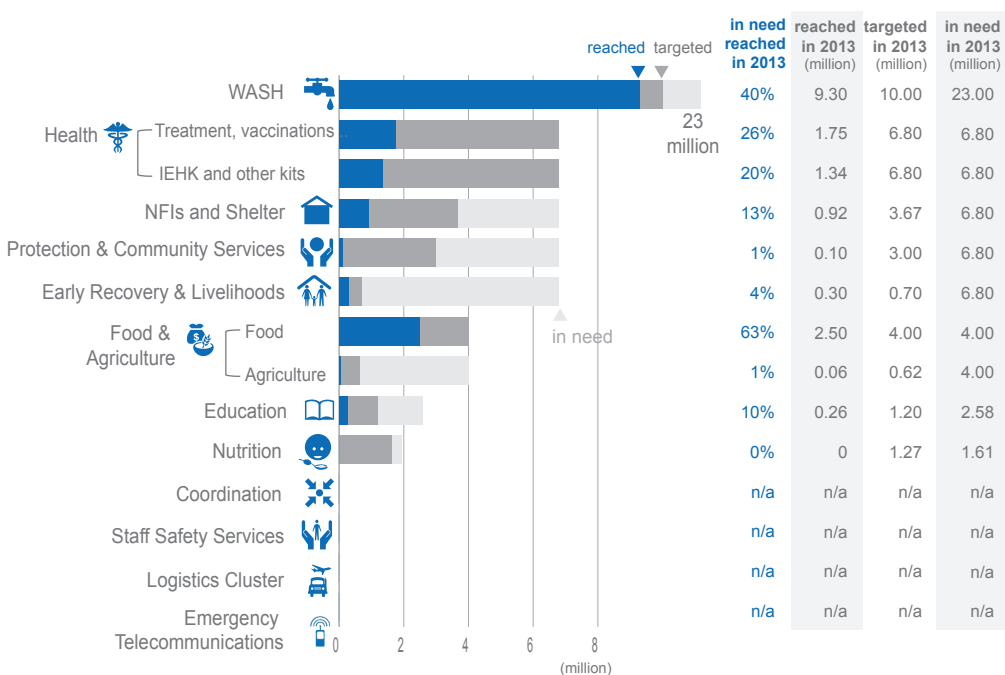
FUNDING



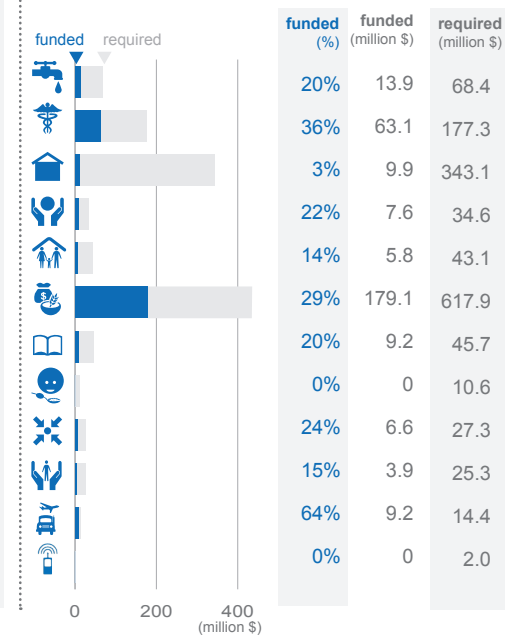
Top 5 donors of SHARP 2013



PEOPLE TARGETED, REACHED AND IN NEED (2013)



FUNDING NEEDS AND GAPS⁸ (SHARP 2013)



The above does not include US\$ 95.3M not yet allocated to specific sectors